

# Raw Hide PSLAC Gazette

"Without question, the Raw Hide Gazette is by far the best and most informative and comprehensive Guild publications of all of them! You are to be commended for your very fine and professional efforts. Keep up the good work. With admiration"/signed/ AI & Ann Stohlman, December 1997

Copyright © 2011 by PSLAC, All Rights Reserved

Puget Sound Leather Artisans Co-Op

January 2011

## Hide Highlights

Page:

- 2 Six-Sided Box Project
- 2 Dave Torix's tool sale Jan 8th
- 5 Ohio Travel Bag Retail?
- 5 Workshop Report
- 5 Good Bye & Thanks
- 7 Upcoming Events



Christmas Greeting and a Happy New Year from Peter Main to PSLAC



...another recycled card!

### Meeting Announcement

#### NEXT MEETING

**Sunday, January 9th**

*(See map on last page)*

## Six-Sided Box Project

In last month's RawHide Gazette **Len** mentioned that I would draw up patterns and instructions for the construction of the six-sided box that we are doing at our meetings and will finish over a period of months. The pattern is printed on the next page as a full size pattern.

A little background on how we came up with the project. I think it was around July last that **Roger** went to a garage/rummage sale and found an incomplete paper box that somebody had started to make and either couldn't figure out how to finish or lost interest. The six portions had been glued together and then it had been left. Roger was taken with the concept and wondered if it could be made out of leather. He acquired it and brought it to the August UFO meeting.

A few of us sat around discussing the possibilities and decided to run with it as a project for members to do at the meetings and get some actual leatherwork done instead of just sitting around talking.

The attached pattern shows one segment with the two little flaps for joining each segment together. The top and bottom round portions are for closing the box. Each segment would be folded onto the next piece and the last piece would fold in and lock the bottom and top respectively in place. The top and bottom segments would have to be skived fairly thin if the project is made into a box, in order for all the segments to be able to fold in without too much bulk.

There are various ways that the box could be assembled. One being that the tabs can be used as a feature and kept on the outside and sewn, or put on the inside and sewn (this would entail sewing the box inside out and then turning it right way around). Another method would be to cut the tabs off, butt sewing the edges or lacing the edges. There are lots of other alternatives as well with a little imagination.

The idea can also be turned into a vase for dry flower arrangements or for real flowers by lining the inside with pitch. As a vase it would be a good idea not to cut the bottom tabs off, but, use them as part of the base by being them outwards and sewing a bottom on to them and then trimming around the outside giving a scalloped effect.

The four sides within the red lines can be tooled or stamped to each persons liking.

The idea of putting this pattern out is to encourage as many of you as possible to do this project and then to send in some photos to me at [marquispg@aol.com](mailto:marquispg@aol.com) and then we'll put them in the RawHide Gazette. It will be fascinating to see how many variations can be achieved with one idea.

Happy tooling and looking forward to seeing what we all come up with.

**Paula Marquis**

## Dave Torix's tool sale Jan 8th

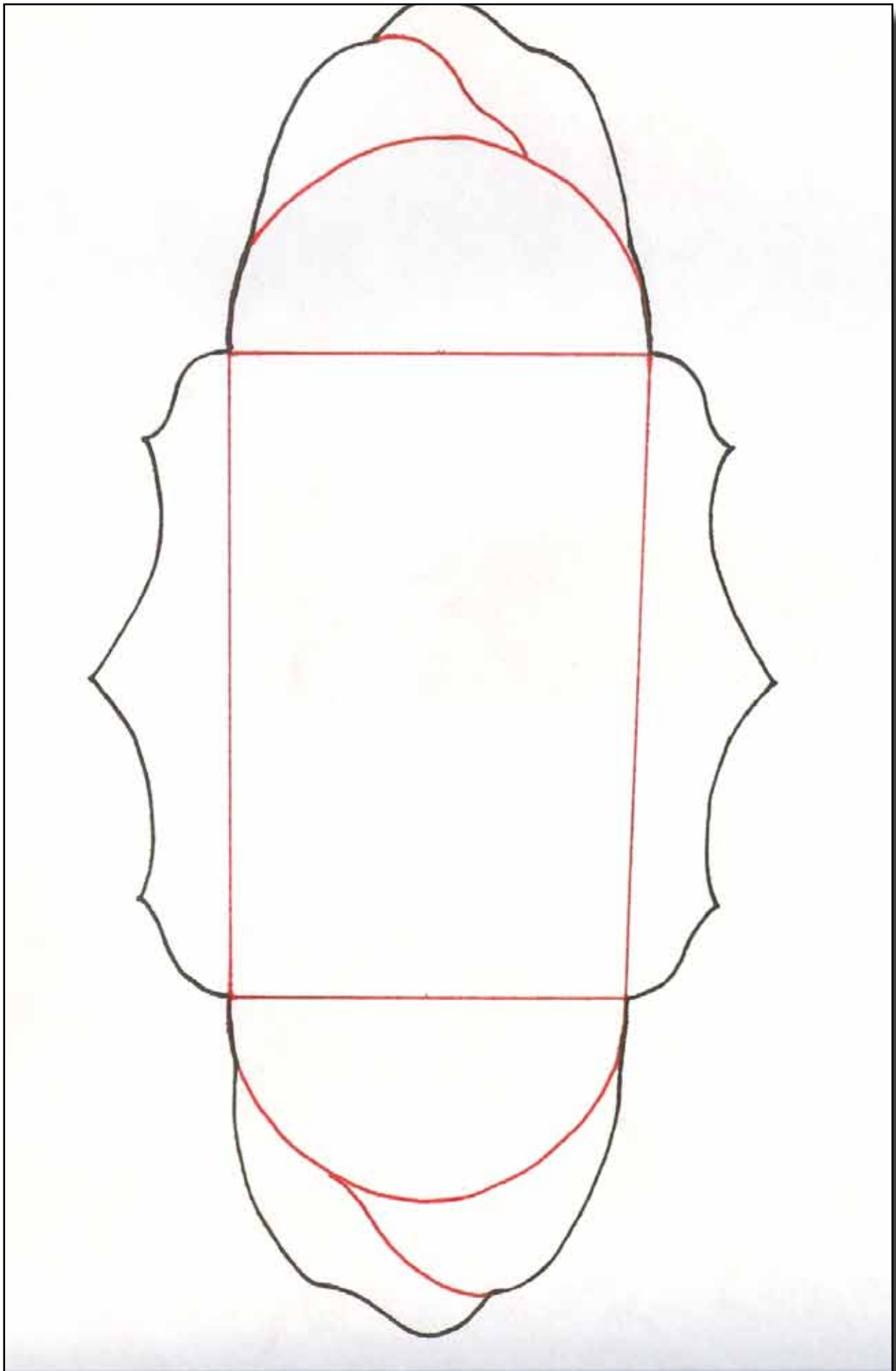
As you know, Dave Torix, who helped us teach the PSLAC-East open classes at the Spokane Leather Factory, passed away this fall. Stan and I are helping Sandra Torix sell all of Dave's leathercraft tools, books and supplies. Last week, we successfully put a group of his tools on eBay so we decided to load another group for auction on eBay this week. If you are interested in them, please check eBay seller id whiterosex.

In addition, we are also going to have a huge sale of his tools at the Spokane Leather Factory after our next PSLAC-East 2nd Saturday class this coming Jan 8. The class is normally held from 9:30 AM until 1 PM but we are going to shut the class down a half hour early at 12:30 PM to give us time to setup for the sale. The sale itself will start at 1 PM and will go to 3:30 PM or whenever we get tired which ever comes first..

If you come to the sale, please bring cash only (lots of it. lol..) as Sandra won't be in a position to accept checks or credit cards. If you decide to buy a substantial amount of tools etc then Sandra might reconsider and accept a check. Please ask first. Look for some really great prices on tools and books and even make offers if you are so inclined. Lots of stuff at half price and less..

**Ken Bush**

White Rose Leather  
11923 E. Fairview Ave.  
Spokane Valley, WA 99206



CUT 6 PARTS AND MAKE INTO A BOX.

THE BOX CAN BE SEWN, LACED, GLUED OR ASSEMBLED IN ANY OTHER METHOD.

THE BOTTOM PIECES ARE DESIGNED TO FOLD IN ON EACH OTHER TO CLOSE THE BOTTOM.

THE TOP PORTIONS WILL DO THE SAME, BUT, CAN BE LEFT OPEN OR CURVED OUTWARDS TO MAKE A VASE OR OPEN ~~TOPPED~~ TOPPED CONTAINER.

THE SIDES CAN BE TOOKED WITH ANY PATTERN DESIRES, AS CAN THE TOPS AND BOTTOMS.



## Ohio Travel Bag Retail?

I found this site that is associated with Ohio Travel Bag. Check out their miscellaneous section. A bit of everything. Looks like their retail store while Ohio Travel Bag is wholesale only.

[www.hardwareelf.com/index.html](http://www.hardwareelf.com/index.html)

Herb Rocky



- Buckles
- Corners / Clamps
- Fasteners
- Feet
- Handles
- Handles Hardware
- Hinges
- Latches & Locks
- Miscellaneous
- Ornaments
- Rings
- Snap Hooks
- Tools
- Wheels
- Zippers

## Workshop Report

Well, can you believe it, we are into 2011!!

We have done away with the mini-workshops/demonstrations for the meetings and have introduced a new idea which we hope will get us all doing more leatherwork at the meetings and less talking. Should be more fun.

As mentioned in last months RG we are doing the six-sided box. Paula has done a little write-up and put the pattern for us all to use in this Newsletter.

It looks like we'll be having a hand-sewing workshop (all-day) on the last Saturday of either March or April. Details and month to still be worked out and will have more information in next month's RG.

The February meeting will again be held at MacPherson's in Seattle. No work on our box will be done at that meeting as we spend all our time wandering around the shop and looking for good stuff to buy. MacPherson's always give a good discount at that meeting. Also an excellent opportunity for us to get our year's supply as parking is very difficult during week days in that area. MacPherson's are always great hosts and open the shop specially for the Club and so we hope as many of you as possible will be at the meeting.

We are in the process of trying to get Brad Martin to Seattle for a weekend workshop (possibly 3 days - Friday/Saturday/Sunday) for a workshop. Details still to be worked out and more new on that later. We propose

to have this workshop in the middle or late August.

See you all at the meeting.

**Len Madison**  
Workshop Co-Ordinator



## Good Bye & Thanks

Still a lifetime member, but with the 1st of January, 2011 I have officially resigned as a Director of PSLAC and have turned over the reigns of the RawHide Gazette to the capable hands of **Roger Kaiser**. Please give Roger the same support you gave me during my turn at editing and publishing the RawHide Gazette.

**Bob Stelmack**  
Richland, WA

This page left  
intentionally  
blank

# Upcoming Events

## Western Washington (Seattle/Tacoma/Everett) PSLAC CURRENT SCHEDULE FOR 2010

- General Member's meetings are on the 2nd Sunday of each Month, (1:00pm till 4.00p.m. approx.) unless specified below.
- Meetings held at Issaquah Valley Senior Center, 75 NE Creek Way, Issaquah. WA. 98027.
- February meetings are held at MacPherson's Leather, 519 12th St. S., Seattle WA.

***Change in Start time and order of the meeting and demo:***

**General Meeting (Start at 1PM) followed by the Mini-Demos (Starts at right after General Meeting) .**

**All-Day Workshops.**

-----  
***Breakfast informal get-together locations:***

***North breakfast >>>*** Last Friday of the month at 10:00 AM at: Crossroads Restaurant, 1904 201st Pl. S.E., Bothel. WA.

***South breakfast >>>*** The 3rd Saturday of the month at 8:30 AM at: Oscar's Restaurant, 8726 S. Hosmer St., Tacoma, WA, phone: (253) 548 2419  
-----

## Eastern Washington (Tri-Cities or Spokane) CURRENT SCHEDULE FOR 2010

**Tri-Cities Desert Leathercraft Group (DLG) Member's meetings** are on the 3rd Saturday of each Month, unless specified below.

- Informal meetings held at 2532 Banyon St., Richland, WA 99352 (call Bob at 509-392-2589 for directions). Google map reference: +46° 16' 19.20", -119° 18' 32.40"

**Spokane PSLAC East Member's meetings** are on the 2nd Saturday of each Month, unless specified below.

- Informal meetings are held at: the Spokane Tandy Leather Factory Store, 28 West Boone Ave., Spokane. WA 99201.

**General Meeting, Demos and Workshops.**

Class is at the Spokane Leather Factory. W 28 Boone in Spokane. Our new hours will be 10 AM to 1 PM. No more split sessions. Contact Ken Bush for time, date (normally the second Saturday) and details:

Ken Bush  
White Rose Leather  
11923 E. Fairview Ave.  
Spokane Valley, WA 99206  
whiterosex@aol.com  
Phone: 509.926.2087

# PSLAC Members Only Advertisement Page

Any PSLAC Member can advertise leather related products or services, subject to approval. Just send your text, picture and/or logo to [stelmack@nwlinc.com](mailto:stelmack@nwlinc.com)



## MARQUIS UNIQUE LEATHER ARTISTRY, LLC

I make almost anything that can be made from leather and can be sewn by hand. A lot of my works are 'bespoke items', meaning, one of, individual custom requests, ranging anywhere from books and folders to rifle scabbards, holsters and golf bags, fully carved and stamped, and any and all articles in between, which also includes moulded bowls and pictures.

Phone: (206)-523-6295

E-mail: [marquispg@aol.com](mailto:marquispg@aol.com)

[www.marquisuniqueleather.com](http://www.marquisuniqueleather.com)



Black Horse Leatherworks & Saddlery specializes in high quality & unique custom western tack and apparel. We make some English items such as Schooling chaps & Stall items. We make all our leather items one at a time, by hand per our clients specifications.

C.E. Gessell, Owner

*Our Motto: If you can imagine it... we can create it!*

## Fantastic Leather Burnisher

- ▶ New and Improved
- ▶ Faster than ever
- ▶ Cuts burnishing time by 90%
- ▶ Improves quality and appearance
- ▶ Consistent finish in a single pass
- ▶ New products available



For more information call 509-946-4247  
View our eBay Store:  
<http://stores.ebay.com/scentofleather>  
Visa & Mastercard orders accepted by phone

**New Edge Finishing System Available**

## DIAMOND P LEATHER SHOP PHIL O'NEILL

Saddlery: New, Used-Repair  
Custom Made Leather Goods  
25051 - 180 Ave SE, Kent WA 98042  
Hours By Appointment Or By Chance  
(253) 631-9770

This Is A One-Man Outfit  
All Custom & Repairs Are Crafted By Myself  
E-mail: [wsubarbara@gmail.com](mailto:wsubarbara@gmail.com)

## Custom Maker Stamps Grey Ghost Graphics By Jeff Mosby

Custom maker stamps, laser cut acrylic templates and custom tapoffs for the leather craft field. Custom cut from your artwork at reasonable rates!

P.O. Box 30268, Myrtle Beach, SC 29588  
(866) 205-9810 or (843) 903-4788

[www.greyghostgraphics.com](http://www.greyghostgraphics.com)



## Norm Lynds, Toolmaker

Mallets, Modelers, embossing tools, lifters and others on request

Phone: (425) 357-1001

E-mail: [sagerat2003@yahoo.com](mailto:sagerat2003@yahoo.com)

**Leather Big Book Covers**  
[www.leatherbigbookcovers.com](http://www.leatherbigbookcovers.com)  
by Bob Stelmack,  
Desert Leathercraft LLC



# Leather Company Advertisement Page

Support our sponsors and take advantage of the PSLAC Membership Discounts...

## Tandy Leather Factory

*Offering Members wholesale club discount to PSLAC members*

The Leather Factory #21 PORTLAND  
Toll Free: 888-277-3360  
13221 NE Whitaker Way Portland, OR 97230

Tandy Leather #126 SEATTLE  
Toll Free: 866-220-9698  
14713 Aurora Ave N Seattle, WA 98133

The Leather Factory #09 SPOKANE  
Toll Free: 800-822-8437  
28 W Boone Ave Spokane, WA 99201

Tandy Leather #124 TACOMA  
Toll Free: 888-222-0510  
13819-C Pacific Ave South Tacoma, WA 98444

## FERDCO



In the US - Contact Ferdco Toll Free  
@ 1-800-645-0197  
International - 1-208-689-3006  
Fax - 1-208-689-3008  
E-mail - ferdco@smgazette.com

*Offering a discount to the PSLAC members of a 10% off of any parts and supplies ordered and 2% off of any equipment (sewing machines ,etc.)*



Toll Free:  
**(800) 541-3264**  
**Bee Natural Leather-care**  
*The ultimate in leather care products*

P.O. Box 820803, Vancouver, WA, 98682-0018  
(360) 891-7178 , FAX: (360) 891-7166  
E-mail: [bnatura@pacifier.com](mailto:bnatura@pacifier.com)

Outside Washington  
1-800-343-9949

(206) 328-0855  
Fax: 328-0859

## MACPHERSON

*Leather Company*

Leather, Shoe Finding and Saddlery

*Offering a 30-40% off retail discount to the PSLAC members*

519 - 12th Avenue S.  
Seattle, Washington 98144

## GLOBAL LEATHERS



Web site: [www.globalleathers.com](http://www.globalleathers.com)  
Telephone : 212-244-5190  
Fax : 212-594-7515  
E-mail: [globalleathers@usa.net](mailto:globalleathers@usa.net)  
Paul Crystal

*Offering a discount to PSLAC members*

## BRETTUNS VILLAGE LEATHER

Selling odd lots, miscellaneous overstocks, bargain leathers and leathercraft accessories, all from Maine, only online

Sides, Full Hides, Buckles, Key Rings, Laces, Thread, Tools, Rivets, Scrap Pieces, Elk & Buffalo Scrap

**Always Free Shipping in the 48 States**

[www.brettunsvillage.com](http://www.brettunsvillage.com)

## Steve Derricott



Twister D Products  
301 E. Bower St.  
Meridian, Idaho 83742  
(208) 884-3766 - Fax (208) 884-3767  
A Division of Gfeller Casemakers, Inc.  
[www.lacemaster.com](http://www.lacemaster.com)

*Offering a 10% discount to the PSLAC members*

## Leather, Suede, Skins, Inc.



261 West 35th Street  
11th Floor, New York, NY 10001  
Tel: (212) 967-6616  
Fax: (212) 564-5759  
[www.leathersuedeskins.com](http://www.leathersuedeskins.com)  
Email: [leather.suede.skis@att.net](mailto:leather.suede.skis@att.net)

*Offering a 10% discount to the PSLAC members*



## Dusty Johnson

PLEASANT VALLEY SADDLE SHOP  
1220 S. County Rd. 21  
Loveland, CO 80537  
Phone: (970) 669-1588  
Fax: (970) 669-1589  
E-Mail: [dusty@pvsaddleshop.com](mailto:dusty@pvsaddleshop.com)  
URL: <http://www.pvsaddleshop.com>

*Offering a 20% discount to the PSLAC members*

*RawHide Gazette*

**Editor / Publisher:** Desert Leathercraft LLC  
**Co-Founders:** Bill Churchill & General Seymour  
**Treasurer/Secretary:** Barbara Lourdes

The *RawHide Gazette* is published monthly (12 times a year). Address for information and correspondence: PSLAC, c/o Barbara Lourdes, PO Box 1144, Auburn, WA, 98071, USA, E-mail: [billing@pslac.org](mailto:billing@pslac.org)

The *RawHide Gazette* is provided to the Puget Sound Leather Artisans Co-Op as a part of their membership benefits. Annual dues are \$24.00 USD per year.

All submissions are subject to editing for clarity and length. All articles submitted must be accompanied by name, address and permission of writer.

**Advertising Rates**

The RawHide Gazette now offers advertising space to interested parties. Ad spaces are as follows:

- 1/4 Page or Business Card ..... \$60 USD
- 1/2 Page.....\$110 USD
- 1 Full Page .....\$200 USD

These rates cover a six month time period. PSLAC members are entitled to a 25% discount. Leather companies supporting PSLAC are given free Business Card size advertisement, additional space at regular rates.

The Puget Sound Leather Artisans Co-Op can be found at:

<http://pslac.org>



**Taking I-90**

**From Auburn:** come north on Hwy167, or I-5, then I-405 north, then onto I-90, going east:

**From Everett:** South on I-5 to 405 South, or to I-90, going east:

From I-90 get off on exit 17/Front St., and bear right onto Front Street. At the third stoplight, turn left onto E Sunset Way, then see below:

**Taking Hwy 18 from around Auburn to Issaquah**

Get on Hwy 18 going East, from Auburn, it's about 12 miles to Maple Valley, then at about 2 ½ miles after Maple Valley, look for the turn off to Issaquah Hobart Rd SE, turn onto ramp 276th Ave SE and go 0.6 miles, bear left onto Issaquah Hobart Rd SE. It's about 8 ½ miles from there to Issaquah.

Hobart becomes Front Street S, which takes you into downtown Issaquah. Turn right onto E Sunset Way, then see below:

**After turning onto E Sunset Way:**

go two blocks (past the Police and Fire Stations), turn left onto 2<sup>nd</sup> Ave SE, go past the old Senior Center building on your left, and a baseball field, then left onto NE Creekway, go almost to the railroad tracks. The new Issaquah Valley Senior Center is a brick building on your left, parking in front of it. There is also parking behind, from Sunset, turn left into the parking area, right before the Police Station (look for a large parking sign on your left), and follow it till you see a kids play ground. **Address: 75 NE Creekway, Issaquah, WA 98027**

**PSLAC**  
**c/o Barbara Lourdes**  
**PO Box 1144**  
**Auburn, WA 98071**  
**USA**

