

# Raw Hide Gazette

Copyright (c) 1997 by PSLAC, All Rights Reserved

Volume 3, Issue 7

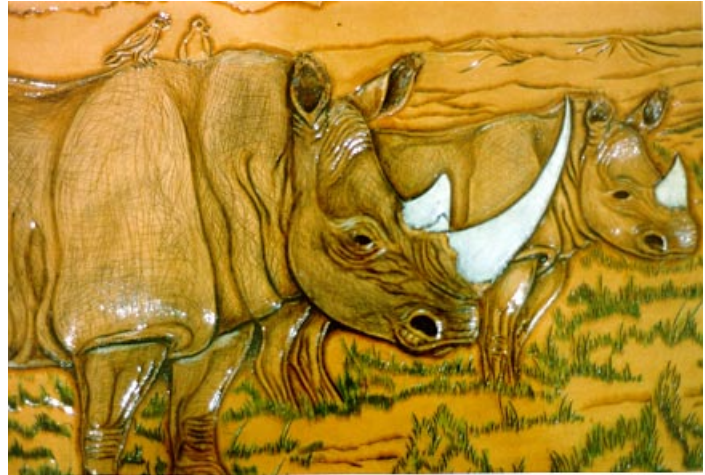
Puget Sound Leather Artisans Co-Op

September 1997

## Hide Highlights

- Uncle Bill's Corner -- Bone Folder
- Bob Beard -- the Leather Artist
- Puyallup Fair Pictures (before judging)
- Burnishing Wax
- Last Call for Sale
- Tips-Tips-Tips
- Christmas Already?
- Meeting Announcement

the fair. I know that 500 is not many when you count more than a million that go through the FAIR, we are trying to pick out who we think that might be interested in the CO-OP ....



**DURHAM HEFTA** and **KEVIN WHITE** of the **LEATHER FACTORY** in **SPOKANE** — AGAIN.. have **DONATED** a set of tools. This time it is a **COMPLETE** set of **MIDAS BASKET WEAVE STAMPS**. **ALL FOR CHILDREN'S LEATHER!!!** We can't thank you enough.

**ESTER LOBB** also donated a

**LARGE BOX** just full of goodies for **CHILDREN'S LEATHER** .... **THANK YOU ESTER** .... (Little better than the old guild ain't it.?) At this (Sept.) meeting we will have a bunch of Raffles. One right after another. New tickets for each raffle. And do we have things to raffle. Almost like a whole new Leather Company. So rub your favorite **GOOD LUCK CHARM** and come out fighting ... we are going to build up **CHILDREN'S Leather's Kitty** ....

## UNCLE BILL'S CORNER

**SEPTEMBER 1997 ... THE FAIR .... THE FAIR .... THE FAIR .... THE FAIR ....** There are three of us demonstrating at the **PUYALLUP FAIR** this year ... We have something new this year. The **BROCHURE** that **Bob Stelmack** designed. We have five hundred of them to give out. at



**EVERYONE BRING THE PROJECT THEY PUT INTO THE FAIR FOR SHOW AND TELL AT OUR SEPTEMBER MEETING.....** (The word project should read projects) ... If we can get all the projects at the meeting, that will wear out **Bob**

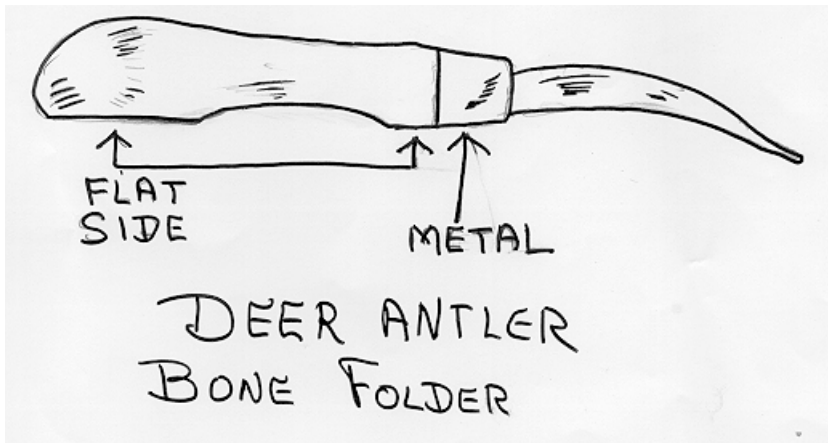
<http://www.nwlink.com/~stelmack/pslac.htm>

**Stelmack's** camera button finger.

As I have mentioned before, I ordered about twelve of **HIDE PRODUC-**

possible. Sand one side of the handle flat. This helps to keep the tool from rolling off of your workbench. And on occasion you will use this flat surface

THE SMOOTHER THE ANTLER ... DEFINITELY THE MORE VERSATILE AND BETTER THE 'BONEFOLDER'.



NOTE: If you use a buffing compound to polish either the handle or the antler ... BE ESPECIALLY SURE THAT BOTH ARE CLEAN BEFORE USING AROUND LEATHER. When you are finished polishing the 'BONEFOLDER' you can use ANY PART OF THE HANDLE OR ANTLER to crease, fold, polish, press, mark, cement, burnish, or anywhere else you might want to use this versatile tool (See related drawing)

Another note about the PUYALLUP FAIR. When **General** and I were

**TIONS** tools, mostly background tools. Now these tools are tools that I would classify as a tool that could EASILY cover a complete project and give a "GRAIN APPEARANCE". At this month's meeting, I will bring three tools that anyone can make using only a hacksaw and/or one jeweler's file. For those of you that cannot possibly attend the meeting, I will put these three tools in the OCTOBER GAZETTE.

buffing leather. Be sure the end of the handle is perfectly round. Sand this handle extremely smooth and then polish (buff if possible) and if you wax it, be sure that you rub the wax into the grain. Use floor wax and 4 ought steel wool with the grain. Let the wax completely dry and polish the handle.



This month I will put in what I call the **ORIGINAL BONE FOLDER**, as everyone knows, both **CRAFTOOL** and **OSBORNE** and almost all tool companies make a **BONEFOLDER**. Actually I honestly think that this one goes a little further. What are the uses of a **BONEFOLDER**?. A MULTITUDE OF SINS AS MY FATHER USED TO SAY ON THE WAY TO THE WOODSHED.



The handle should have a metal ring around the shank where the **BONEFOLDER** is inserted into the handle (for added strength). Now you want the tip of a deer horn no more than 3 1/2 to 4 inches long. Drill a hole in the handle and insert the Deer horn into the

handle cementing with EPOXY cement. Give 24 hours cement drying time and then start polishing the deer horn. First sand the horn smooth using a finer grain sandpaper as you go along. Then use 4 ought steel wool for the final smoothing' and then floor wax.

entering projects for competition we ran into a little trouble with **CHILDREN'S ENTRIES**. It seems that there are not enough categories. As it stands now, for **JUNIORS**, there are only three classes: **POCKET ITEMS ... WALLETS ... OTHER ITEMS ... JOAN HAMBURG Superintendent** of the **HOBBY HALL** did come up with another category. Household items. We use

Creasing ... Buffing ... Folding ... Cementing ... Emergency tool for applications of **CRAFTAIDS** ... Burnishing a carving (especially if you want to burnish a real small area in a carving). **FIRST THE HANDLE..** A wooden handle, hardwood if at all







one that is keeping the PROFESSIONAL category in the FAIR. *Stop by the TACOMA TANDY and thank LARRY for that.* Larry does a lot to promote LEATHERCRAFT at the PUYALLUP FAIR

**THANKS TO ALL WHO ENTERED THE FAIR.**

Another Note, before I forget..(Fred says that I do forget)..For those of you that use the TANNING OIL MIXTURE for casing. First dampen the leather with water the way that you used to do. THEN.. APPLY the TANNING OIL MIXTURE. It will go into the leather much easier and stay damper much longer. What I do is the above and then put into a "ZIPLOC" and then put into refrigerator. It makes a whole world of difference. Nothing will give you the burnish that the TANNING OIL MIXTURE will.

that class as a catch-all but it is entirely unsatisfactory. I understand that **Mr. Larry Riekena** (manager of **TANDY-Tacoma**), and **Ms. Hamburg** are going to try and come up with something that will be more satisfactory for Children's entries, but this will not be until the 1998 FAIR. Note: There was some beautiful entries, SO MUCH TALENT OUT THERE. And the variety is unbelievable.



For those of you that are doing NATIVE AMERICAN CRAFTS, until they (if and when) they get a category for that, it will be hard to enter them. The PROFESSIONAL categories will NOT CHANGE. **Ms. Hamburg** explained to me that **TANDY (of Tacoma)** is the

as usual is outstanding. **Larry, General,** and **I** have demonstrated so far. The woodcarvers beat us this year in two categories. ENTRIES AND DEMONSTRATIONS ....

Especially in the DEMONSTRATION Department. The WOODCARVERS will have had ..FORTY TWO..(42) demonstrations by the end of the fair.

We will have had SEVEN (7)..... To demonstrate is FUN ... !!! ... It is also



PROFITABLE ... When you demonstrate you receive two entry tickets and one parking ticket. That means you will have one entry and parking ticket to use to get in to demonstrate and one E X T R A ENTRY TICKET to take a friend with you. So you can spend a day at the fair and take two hours to tell the world how much you like LEATHERCRAFT. There is really nothing to it. **General** and **I** will show all how to do a FAIR DEMONSTRATION AT THE OCTOBER MEETING



....

**Bill Churchill**  
Federal Way, WA

**We Get Letters!**

Dear Bill,

Sorry to have missed the last several meetings, but my father suffered two strokes in early June and I, with my





Russian rats, went back to Colorado to see him for the summer, mend old

fences, etc..

While I was there, I visited with some of my wife's relatives and was very surprised to find her nephew to have an interest in leather and art. We spent several weeks together doing stamping and basic design layout. I believe he would be an excellent candidate for our youth program, were he to live here, however his distant location makes it impossible for me to continue his training. I have dropped a line to the Columbine Leather Guild to see if they have a youth program and will be able to sponsor him as he is in need of tools, supplies, training, and encouragement.



Should the Columbine Leather Guild not have a youth program, do you have any thoughts on how we can get this kid training, supplies and encouraged?

I was able to get a copy of their July newsletter which I have included for your enjoyment. We ought to send them a copy of ours so they can see the difference.

*(ed. note: The Guild is on the mailing list now.)*

Thank you for consideration of the youth matter.

Respectfully,

/s/ **Chris Check**  
15641 - 11th Ave. SW  
Burien, WA  
98166

Columbine Leather Guild, Inc.  
Newsletter Editor  
8435 Parfet Court  
Arvada, Colorado 80005

## Sample from Columbine Leather Guild.....

### FEATURED PROGRAMS

**JULY:** In July the guild will be doing a checkbook cover project. The guild is providing the checkbook kits and the members will be carving and assembling them as a fund-raiser at the "Woodworkers Show" to

be held October 25-26. **Vern True** is paying for one booth and the Guild was paying for a second booth. But, **Sonny Hallett** volunteered to pay for the other booth. This show is held at the Jeffco Fairgrounds and should be good publicity for our guild. Plan to attend to help man the booths. Tentatively, one booth will be set up as a display for the guild and the other will be used to sell items. More details will follow in future newsletters as they are available.

**June 8th:** In June, **Dave Kriznar** demonstrated the art of the airbrush and it's many applications to leather. **Dave** shared some tips that he has learned along the way. First, always be moving the airbrush, even when you are just



starting to airbrush. This keeps from having blobs or concentrations of dye or paint. Always adjust the airbrush on scrap paper before airbrushing your project. When starting out after the airbrush hasn't been used, spray your scrap paper to avoid spitting". Dye or paint pigments tend to settle out, the when the airbrush is used, it spits the pigments. This can be unsightly. As **Dave Kriznar** pointed out, don't be afraid to try airbrushing. All it takes is practice and experimentation. To start, practice on paper, trying different techniques to learn quickly. Try airbrushing copies of your tracing pattern for a particular project.

## Lone Star Leather Crafters Newsletter Update

**Bob Beard — The Leather Artist** was featured in a very fine article written and illustrated by **Mike**







**Rodgers.**

Here are some excerpts that caught my eye, but to really appreciate you need to see the whole newsletter. You can



contact the Lone Star Leathercrafters at: 1537 Oaks Dr., Quinlan, TX 75474-4715 for subscription information.

“After this beginning, he (Bob Beard) kept at it through wrong tools, wrong leather, etc. He even started custom making tools back then by modifying bolts and nails.”

*(ed. note: Doesn't this sound like someone we know in PSLAC?)*

“Bob’s attention to detail and quality has won him wide recognition. In 1987, Bob won the **Al Stohlman Award.**”

“Bob prefers acrylic tube paint to solvent dye. He first uses **Tandy Glow** and then dry brushes over the Glow. Dry brushing the acrylic gives him complete control. All portions of his

art are colored. This prevents the natural darkening of the leather from impacting or detracting from the work as time goes on. Solvent dyes fade and are overpowered by the

change in the leather’s color. He even uses a 60/40 mix of white/raw sienna to create a leather color. He also does not use straight white, too bright.

What he wants to use is the texture of the leather, he’ll supply the color. This is Bob’s coloring method and it works very well for him. If you are new to coloring leather, experiment and determine what works for you.”

**“Advice from Bob:** Do the very best you can, on everything. Do not cut comers. If you do your best you can’t help but learn on each item. Add details. **SIGN your work.** Bob even dates his work so he can see the effect of time on his creations. This lets him decide where changes are required.”

*(ed. note: I can almost hear Fred’s lament to me — “Sign Your Work”!)*

*(ed. note: I also found something that may be of interest to me in the future.*

*Although somewhat premature, I have put my offer in at my new place of employment to volunteer to support a project in Japan, next year, for a one or two year tour.)*

June 12 1:00 - 3:00 pm, Aug. 6, Oct. 16, Dec. 18, Feb. 19, 1998, Apr. 23, 1998

The meetings will be held at:  
 Craft Gakuen  
 5-16-21 Ogikubo  
 Sugunami-Ku  
 Tokyo, Japan  
 Phone: 03-3393-5599



**Tips Tips Tips**

To put a fine edge on leather tools — try a Japanese Water Stone. They take a little extra care, but put a “fine” edge on a dental tool I sharpened to undercut, much like a “pro-petal” but it looks like a small (really, really small) head knife. If you’ve take any advanced leather carving classes from Bill then you have seen this tool. So



**A Reminder: The next PSLAC meeting will be on Sunday, September 28th at 2:00pm!!!**

here is the basic:

## CARE and FEEDING of the JAPANESE WATER STONE

Three grits are generally available: 800 (course), 1500 (medium), and 6000-grit finishing stone. Water stones need water to work. It is advisable to store the stones in a container of water (add a little iso-propyl alcohol to prevent organic growths) so that they will be ready for use at any time. The 6000-grit stone should be stored upside down, with its wooden base out of the water. If you choose not to keep the stones in a permanent bath, soak the 800 and 1500-grits in water for 12-15 minutes before use. The 6000-grit can be used immediately if you give it a good splashing first.

During the sharpening process, keep splashing water on the working surface.

Never, never use oil on a water stone. By so doing, you will ruin it.

The use of a Honing guide, will not only greatly assist you in maintaining the proper sharpening angles for your chisels and plane irons, but also will protect the stone from unintentional nicks.

Water stone are softer than oil stones. Thus, they will wear, more quickly but they will provide edge not possible with an oil stone.

Any sharpening stone that is not absolutely flat will not work properly. Water stones slightly worn stones, should be flattened before use by:

1. rubbing against a flat and smooth concrete surface;
2. rubbing against a sheet of wet or dry waterproof paper that has been secured to perfectly flat surface;
3. rubbing against a diamond sharpening stone.

The sharpening process is a progressive one. Start with the 800-grit stone and then move to the 1500-grit. The paste that builds up on the stone assists immea-

## Letters to the Editor (& PSLAC)....

### Another Letter — WOW!

Well - Well - You PSLACer's never cease to amaze me... Not only is this a group of very talented Leather Artists, But their skills 'spill' over to encompass culinary achievements.

If you missed the last meeting (which was a pot luck) it was certainly your loss!! The food was "D"licious, and I, along with most everyone else ate too much!!! But I had to try a little of every thing! Yum — Yum!! ( The devil made me do it!!) If we had many Pot-Lucks like that, we'd all look like "Butter Ball Turkeys" and waddle around like "Baby Huey"...

And lets not forget all the different show 'n' tell projects that were brought to share. Every thing from walking sticks to Barbie Clothes — Hey, **Dusty**, playing with Barbie, at your age? OK!!!

I'm sure we all worked hard to get something ENTERED in the Puyallup Fair... Right? After all "Uncle Bill" sure kept reminding us all about it.

Too BAD that the "Letter To The Editor" box was empty in the last newsletter!! I'm sure not everyone's arm is broken!!! Come on "guys" get busy and send in your comments and suggestions... I know you've got-em!! You think'em — so — send'em

*See you at the September meeting — Big RAFFLE, I hear.*

/s/ Standing on-the-sidelines

*(ed. note: Look closely at the ground beef package picture from the month's Pot-Luck RawHide Gazette and see if the package was one of the Hudson Meat packages that were pulled from the market!!! — we'll know if I get many newsletters returned with "Dead and left no forwarding address" ;-)*



# RawHide Gazette On-line

The Puget Sound Leather Artisans Co-Op can be found at <http://www.nwlink.com/~stelmack/pslac.htm>

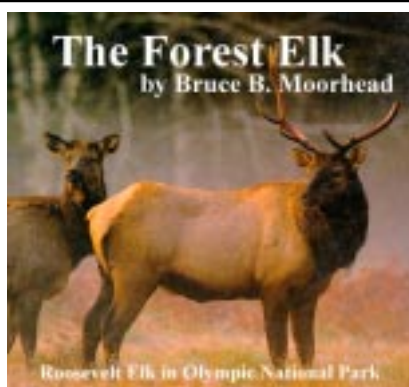
If you need the **UserId** and **Password** for the subscription pages, just contact the RawHide Gazette at: (206)431-5166 or email at [stelmack@nwlink.com](mailto:stelmack@nwlink.com) -- of course the free password information is just for the Puget Sound Leather Artisans Co-Op members. Those on the Internet still need the \$10 per year subscription rate.

*Photos taken and sent in to the PSLAC are, space and focus permitting, used here in the printed newsletter. They are also posted, in living color, on the Internet.*

Your Photos here -- if you send them in to: **PSLAC (ph. 206-431-5166)**  
c/o Bob Stelmack  
13820 - 56th Ave S, #301  
Seattle, WA 98168-4779



**Bill Churchill's latest Day Planner**



Here is the book I used to see which of the Tombo colors to use to dye my fair project. I found this copy in my local library -- a resource often overlooked for ideas and support. They even have the Xerox machine right at the library so you can take that idea home with you.

**Bob Stelmack**  
Tukwila, WA

## PSLAC Membership Application

If you know someone who is interested in leathercraft — give them this information:

### Puget Sound Leather Artisan Co-Op MEMBERSHIP APPLICATION

**YOUR NAME:** \_\_\_\_\_

**STREET ADDRESS:** \_\_\_\_\_

**CITY, STATE, ZIP:** \_\_\_\_\_

**PHONE NUMBER:** (\_\_\_\_)- \_\_\_\_\_

We publish a membership list with our members expertise listed. This list is used to refer possible clients to the best person for the job. Tell a little about yourself, how you got started in leather, what your favorite things to do in leather and other crafts and/or art forms.

*Send this form along with your first years dues (\$24.00) to one of the directors listed below:*

**Bill Churchill**

1471 South 302nd  
Federal Way, WA 98003  
(206) 839-3038

**General Seymour**

17915 212th Ave. E.  
Orting, WA, 98360-9622  
(360) 893-6759

**Fred Natchbar**

1324 Flower Ave.  
Port Orchard, WA 98366  
(206)- 876-6227

**Don Betts**

12613 67th Ave. E.,  
Puyallup, WA 98373  
(206) 848-2649

*If you would like to subscribe to The Leather Crafters & Saddlers Journal through the Co-Op and include an additional \$24.00 for a one year subscription.*



surably in the sharpening process. Do not remove it until you have finished sharpening. As you go from coarse through medium, you will notice that your tool is taking on a mirror finish on both its bevel and its back. Also a wire edge will appear at the point where the bevel and the back meet. The 6000-grit will remove this wire edge and complete the mirror polish.

**Bob Stelmack**  
Tukwila, WA

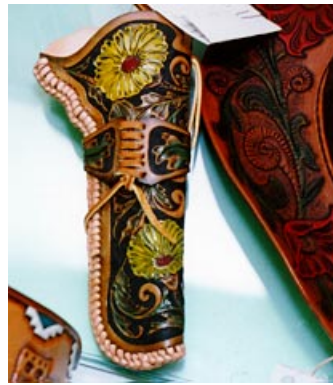
## Remaining Items for Sale

Shoe Repair Machinery For Sale—  
Please contact **Vern Ostafin** (206) 248-2618 Machinery is in Burien, in 2 locations. Burien is 13 miles south of Seattle. Prices have been lowered! All items are to be sold as is, and picked up by buyer.

- Cinderella 4 1/2 Nailer, Ser. # 61A33490, \$300
- Cinderella 4 1/2 Nailer, Ser. # 6OA32177, \$300
- Cinderella 4 1/2 Nailer, Ser. # 56A25695, \$300
- Cinderella 4 1/2 Nailer, Ser. # 59A30671, \$300
- Cinderella 4 1/2 Nailer, Ser. # 63P37564, \$300
- Continental 8 Nailer, boot model, Ser. # JB50172, \$750
- Continental 8 Nailer, boot model, Ser. # 72JB46072, \$750
- Continental 8 Nailer, Ser. #



- 70J44348, \$750
- Comet 10 Nailer, Ser. # 59C31125, \$500
- Comet 10 Nailer, Ser. # 57C25987, \$500
- Speedmaster Nailer, Ser. # 54E21718, \$300
- Nosecone 12 Nailer, Ser. # 66240620, \$750
- Nosecone 12 Nailer, Ser. # 67L41265, \$750
- Nosecone 12 Boot Model Nailer, 73LB46904, \$1,000
- Nosecone 12, Boot Model Nailer, 73LB46920, \$1,000
- Nosecone 12 Boot Model Nailer, 72LB46536, \$1,000
- Nosecone 12 Boot Model Nailer, 71LB44689, \$1,000
- Hardo Power Unit, made in 1986, 3 phase, rotating brushes, numkeg, 4" sander, 1 1/2" sander, 4 feet wide, Ser. # 17-115-21540, \$4,500
- AutoSoler Powermaster Finisher, Model #RAL2500, Sole and Heel Trimmers, numkeg, brush section Ser. #4112552, \$3,000
- Heel Wheel, Autosoler, Floor Model, Ser. # 73HW8199, \$750
- Heel Wheel, Autosbler, Floor Model with a shorter stand, no Ser. plate, \$60
- Landis Stitchmaster 21 Sole Stitcher, \$3,800.
- Landis Stitchmaster 21 Sole Stitcher, \$3,800
- Landis K Stitcher, Ser. # 477625B, \$1,500



- Landis K Stitcher, Ser. # 400928, \$1,500
- Landis K Stitcher, Ser. # 401185, \$1,500
- Landis K Stitcher, Ser. # 444107B, \$1,500
- Landis K Stitcher, no ser. # plate, \$1,500
- Landis K Stitcher, Ser.

- # 411926B, \$1,500
- Landis G Stitcher, Ser. # 353015, \$1,500
- Landis L Stitcher, Ser. # 50871, \$1,500
- Landis L Stitcher, Ser. # 50620, \$1,500
- Landis L Stitcher, Ser. # 542343 \$1,500
- Landis L

Stitcher, Ser. # 50583B \$1,500

- Champion 77 McKay Stitchers, 4 of these at \$900 each
- Singer Post Machine, Table Model #136WIOI, \$700
- Singer Vamp Machine, Model 17-23, \$700
- Singer 29K71 short-arm Patch Machine, mounted at an angle to stand and sew, \$1,000
- POWER UNIT — hope to sell as one complete shop unit (\$26,000) Landis L Stitcher, Power Adler Patch Machine, model 3010, Ser. 437046.
- Power Sole Stitcher, Model BN2000, Ser. # 84303, Floor Model Heel Wheel, Ser. # HW9655, Power Press Model # PWRAL2500, Ser. # 4381269, Power Nosecone 12 Boot Model Nailer, Power Finisher Unit with brushes, sanders, trimmers and numkeg #PWRAL2500
- Long, painted wood counter with Royal cash register and 5 metal stools
- Heat Activator Lamps (larger, older models) \$35 each

*A few items still left — this might be the time to make your best offer.*

**Extra Care Handbag Repair**  
**Jeannie Nelson** (253)241-5770  
15418 8th Ave. S.W.  
Burien, WA 98166





<tree@bigtkt.net>  
 Subject: Re: [IILG] Burnishing wax

Sharon, Hi, Burnishing wax is used in bootmaking to put a final shine on the sole and heel. It is applied to a finishing wheel, yarn or

horsehair, and then to the boot. Can also be used to fill slight imperfections.



## Burnishing Wax

(ed. note: One of the IILG members was asking about burnishing wax. The following are some of the IILG members responses)

-----first message-----

Hi all,  
 I have acquired a big piece of brown burnishing wax and I am not sure how to use it. Thanks for any help.

Sharon ko4oc@juno.com

-----next message-----

From: ROY D ROUNDTREE



Roy  
 TreeBrand Saddles &

Boots

-----next message-----

From: SheathMkr@aol.com  
 Subject: Re: [IILG] Burnishing wax

Regarding the question about burnishing wax, it is used with the burnishing wheels on a shoe repairman's line finisher. You hold the wax against the spinning wheel to "charge" it with wax, and then burnish your edges on the wheel. Old line finishers usually sell for very little money, and are wonderful tools to have. The problem is their size (about

12' long), their weight (1000 - 1400 lbs), and the resulting difficulty in moving one into your workshop. I don't know if there is any other way you can make use of the burnishing wax "manually."

-----next message-----

From: GCubic@aol.com  
 Subject: Re: [IILG] Burnishing wax

Hi Sharon — Burnishing wax is great stuff and I've been using Fiebing's Wax and my own recipe for years now. I use these waxes on the welt edges of holsters and knife sheaths. This is my technique. After gluing and sewing the edges, use a drum sander to even the edges perfectly. Remember a soft touch here because if you sand too hard or fast, it'll burn the leather making the edges hard and brittle. Now take an edger and



**A Reminder: The next PSLAC meeting will be on Sunday, September 28th at 2:00pm!!!**

remove the sharp edges. Dye the edge (brown dye/brown wax) and give it a few minutes to absorb. Now take your burnishing cake and vigorously rub it into the edge. What you're doing is filling the pores up with the wax and the vigorous part helps to melt the wax. Now take a piece of denim and vigorously rub the burnishing wax cake into the denim until it's loaded with some melted wax. Whew, now rub the edges of your project until the edge is smooth and slick. Let it set or dry and apply paste wax and polish to a mirror edge.

G.Cubic

-----last message-----

**Only 365 days  
until the  
Puyallup Fair.**

**Start your projects  
NOW!!!**

## Christmas Already!

Well, you know how long it takes to get those projects ready for the Fair. So how about thinking about Christmas items? Here is an idea for part of a project:

At **Daniel Smiths**, at the checkout counter, I saw some small wooden articles that were cut (probably with a Clicker) that were to be punched out and reassembled into three dimensional shapes. The one shown here is a Reindeer and eight of them would start a pretty nice craft project that could be handed down generation after generation.

Use your handy-dandy Xerox machine to create the size you want and -- go for it!

If you have any ideas for Christmas Projects send them in and they will be published.

**Bob Stelmack**  
Tukwila, WA



*(ed. note: The Fair pictures in this issue were not ALL the projects. Some pictures didn't turn out, other projects were turned in later than my picture taking session. Each project had a special appeal and I took some more pictures on Saturday -- especially the **Junior** entries)*

The next meeting will be in **September**

Mark your calendar!

**Sunday, September 28th, 2:00-4:00pm**

Meeting at the Foster Greens Apartment, Information Center (Recreation Center), 13865 - Interurban Ave, Tukwila, WA. All members and sponsors are invited... Just a reminder that parking at the apartment complex is very tight and that 50 feet south of the meeting room is a business that is not open on Sunday - park at your own risk.

**...AND there will be the biggest raffle in PSLAC history!!**