

Raw Hide Gazette

Copyright © 1999 by PSLAC, All Rights Reserved

"Without question, the Raw Hide Gazette is by far the best and most informative and comprehensive Guild publications of all of them! You are to be commended for your very fine and professional efforts. Keep up the good work. With admiration"
/signed/

Al & Ann Stohlman, December 1997

Volume 4, Issue 11

Puget Sound Leather Artisans Co-Op

January 1999

Hide Highlights

- Deb's New Web Site
- Larry Leaves Tacoma Tandy
- Preview of Ken's January Demo
- Tips-Tips-Tips
 - Two Swivel Knives
 - Filigree Punches
- Uncle Bill's New Tools
- Far East Report: 1999 - Year of the Rabbit
- Make your own Frog Skin
- Uncle Bill's Corner

Mark your calendar!

The next meeting will be:
Sunday, January 31st,
2:00-4:00pm

Location: At Linda's
(see for map and directions)

Deb Laudadio's Home Page on the Internet



Deb's New Web Site

On-Line! -- and looking good. If you get a chance, visit Deb's new web site at:

<http://www.cyberkent.com/leathersmith>

Deb's site comes complete with music. See other pages in this newsletter for more pictures from her new adventure into "marketing on the Internet".

Larry Leaves Tacoma Tandy

Larry Riekema, lately the Manager of Tacoma Washington Tandy Store, retired on December 18, 1998. Larry definitely will be missed. For one thing, I consider Larry a close and dear friend. I am glad that he is retiring. The stress of running a Tandy store is not getting less, but more. I would hate to see a friend brought down by stress.

Larry and I go way back. We first met at

Puget Sound Leather Artisans Co-Op

a National Tandy Manager's meeting and I immediately thought here is the man that invented the word "NERD". He was the manager at the Concord, California Tandy Store.

Then Larry was transferred to Washington State. We have worked together, fished together, made sales calls together — Lord knows we have tipped a few together. When I had to quit Tandy because of a family Medical situation, Larry arranged for me to get my store back when I was ready to come back.

Larry has done a lot for Leather everywhere he has been. He has been the **Judge** at the **Puyallup Fair** for years now. I know for a fact that he was an honest Judge and truly did award for merit. Larry has always helped **Puget Sound Leather Artisans Co-Op**. He has had classes in his store for years. His store awarded the gift-certificates for the

prizes for the New Professional division at the Puyallup Fair. He has personally demonstrated at the Fair for years, and he was always ready to help start children in leather craft. When we demonstrated at the schools he would take extra care to help the teachers and the kids.

Larry is now thinking about starting another phase of his "LEATHER" life. He wants to start his own business. Naturally he will sell leather. He hasn't quite got all of the details worked out, but I have assured him that PSLAC will support him whatever.

You know I can't help but think, on the 18th when I was in the Tacoma store there was **Harry Starr**, recently retired after **38 years**, Larry retiring with **28 years** and me (the Baby) with **20 years**, for a total of **86 years with the Tandy Leather Company**. We were watching **Jim**, the new manager of the Portland store (4 months as manager) working the Tacoma store until the new manager **Pat** comes in after her 10 days manager's training and the New District Manager was there with two months with Tandy. "*OUT WITH THE OLD*" and "*IN WITH THE NEW*", as both Larry and Harry said and I agreed.

We sure hope they have as much fun as we had and that we wish them all of the success in the world.

But back to the new retired person. Larry — I thank you, PSLAC thanks you and we all hope for the best for you on your next adventure.

Bill Churchill
Federal Way

Dusty has a funny story from Larry's past:

Larry doesn't do funny things very often

but I can think of one story that you might find interesting. One evening Larry got a phone call from this lady that wanted to know when we closed. After he told her she asked if he could wait for her because

MACPHERSONS

LEATHER

Phone: (206) 328-0855

519 - 12th Ave S.
Seattle, WA 98144

Offering a discount to the PSLAC members

Terry Durban, Manager

she had to buy a whole bunch of things for the next day activities. (I think it was a day camp) His reply was "only if you bring dinner". He stayed and when she showed up she had a bag with a hamburger, fries and a milk shake. He ate his dinner and she shopped.

Personal Insight from Dusty:

He has the **worst luck with cars** and **he is always late.**

Don't miss Ken's Demo on Leather Finishes in January

(ed. note: Ken was kind enough to provide a preview of his upcoming January Meeting Demonstration. It looks very informative -- don't miss it. And remember, there is a special membership only article on Designing Your Own Work that will be available at the meeting.)

This idea for a Group Meeting Demonstration came about by my asking **Bill Churchill** about **Feibings Bag Kote**. **Tandy** carries **Tan Kote**, but not Bag Kote and I'd seen it mentioned in a number of articles and wondered what the difference was.

I then found Bag Kote at **MacPhersons**

RawHide Gazette

Editor / Publisher: Bob Stelmack
Co-Founder: Bill Churchill
Co-Founder: General Seymour
Treasurer/Secretarty: Linda Stockhausen

Copyright © 1999 PSLAC, Puget Sound Leather Artisans Co-Op

The **RawHide Gazette** is published monthly (12 times a year). Address for information and correspondence: PSLAC, c/o Bill Churchill (ph. 253-839-3038) 1471 South 302nd, Federal Way, WA 98003 (email: churchil@nwlink.com). The **RawHide Gazette** is provided to the Puget Sound Leather Artisans Co-Op as a part of their membership benefits. Annual dues are \$24.00 USD per year.

All submissions are subject to editing for clarity and length. All articles submitted must be accompanied by name and address of writer.

POSTMASTER: Send address changes to PSLAC, c/o Bill Churchill, 1471 South 302nd, Federal Way, WA 98003

Advertising Rates

The **RawHide Gazette** now offers advertising space to interested parties. Ad spaces are as follows:

1/4 Page or Business Card \$60 USD
1.2 Page \$110 USD
1 Page \$200 USD

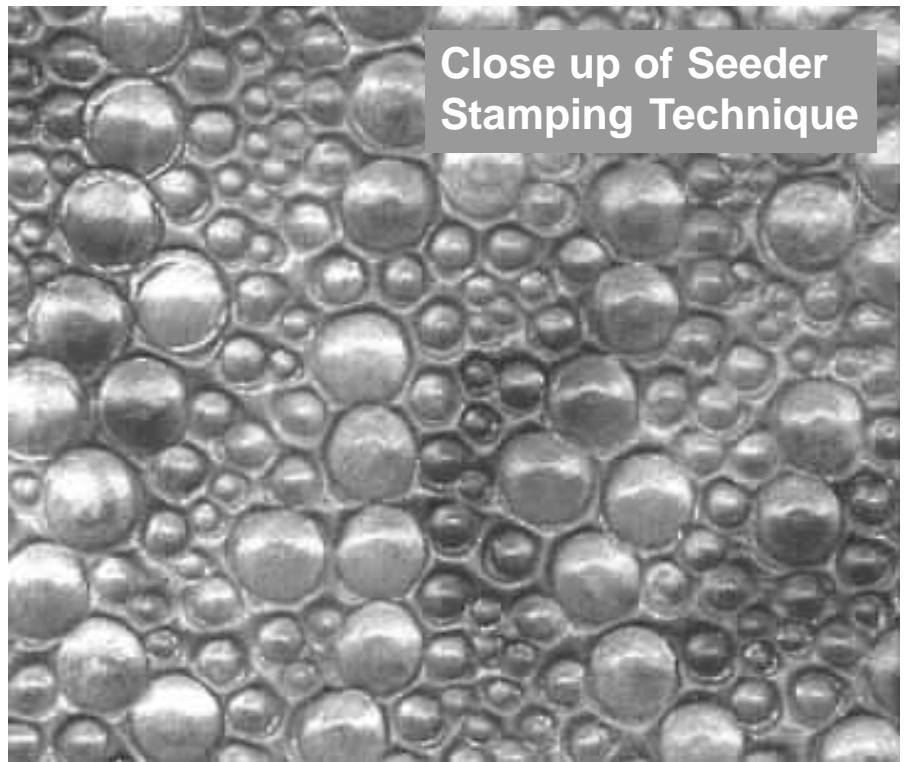
These rates cover a six month time period. Guild members are entitled to a 25% discount. Leather companies supporting PSLAC are given free Business Card size advertisement, additional space at regular rates.

Leather, along with **Rudy's Tack and Saddle Leather Treatment** (with the antibacterial) and another product by **Dyo, Leather Balm**, that **Terry Durbin** at MacPhersons says he's had good results from.

About the same time I bought a copy of the "**Leather Working Book**" by **Valarie Michael** (great book by the way). She recommends a product called **Pliantene** (also know as British Museum Leather Treatment) used to recondition old leather book covers. She listed sources for leather, tools and supplies for Europe, Australia and USA (among others). So I just had to call up and order the Pliantene, from back East (ouch!, \$35 for about 14 ounces). It is a mixture of bees wax, lanolin and cedar wood oil in hexane. After the hexane evaporates it smells great.!

So with the above 5 finishes and add **Supershene, Satinshene, Neatlac/Saddle Lac** (spray and liquid), **Atom Balm**, a clear paste wax from **Meltonan** or **Feibings** and **Lexol** and I have 8 or 9 finishes and 3 or 4 conditioners that can be used as finishes.

I thought I'd get a couple of stamped belts, dye one and leave one natural, and section them off and apply the various "finishes" several days before the meeting and then have them to show Coop members how they look and bring bottles



Close up of Seeder Stamping Technique

of the all the finishes for them to see as well.

I'm also going to get with an expert (Bill) and talk about which are water resistant and flexibility factors (e.g.. putting Neatlac on a soft surface, like a chocolate Elk, looks great until you bend or stretch the hide, after which the Neatlac fractures and crazes like glass). Maybe you could list the above, in the *Rawhide Gazette*, and see if anybody has any to add.

to sew leather using a boar's bristle for a needle (if I can get it to work!) and using a single edge creaser that is heated and used to put a decorative edge line on leather (Valerie Michael reviews it in her book).

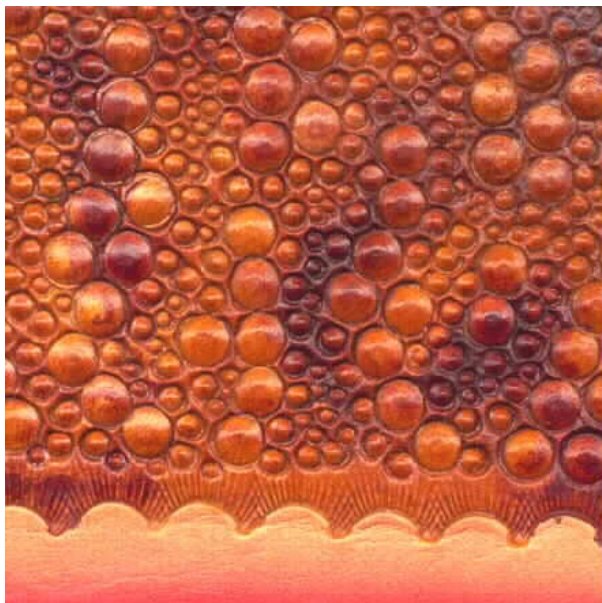
Kenneth G. Eriksen
Bothell, WA

Make your own Frog Skin

No -- this does not involve kissing a Prince, waiting for the transformation and then skinning the frog. Thanks to **Johan Potgieter** from :

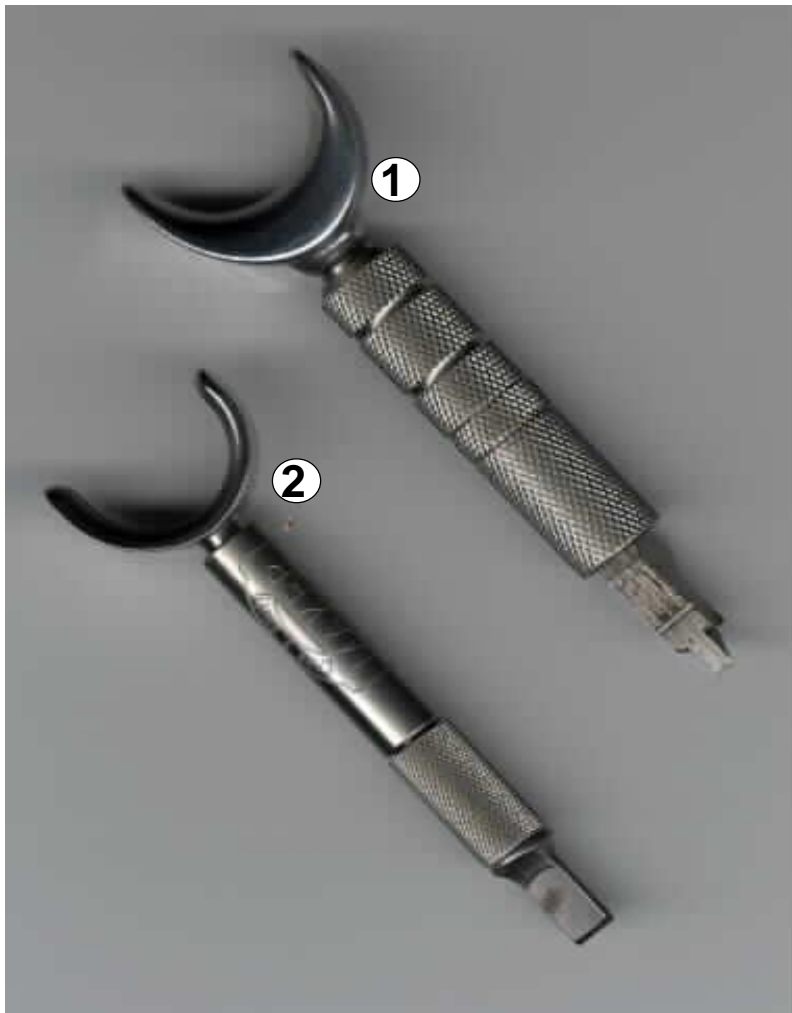
<http://www.citilink.com/~johan/>

...he has shown us a way to replicate frog skin with three different sized "seeders". I have tried it and it works great. I used Craft Japan Tools: #S864, #S633, #S632, & #S631. Johan asked that an acknowledgment be given the originator of this effect - **Tommy McLintic** of the Federation of Southern African Leathercrafters. This is very similar to the techniques shown in the "**Figure Carving Finesse**",



I also thought I'd see if anyone in the group had info or ideas for making their own finish or treatment. I'm also going to have Valerie's book and a catalog from **Segal's Leather** from California for people to look at. The Segals catalog has more unique leather working tools than I've seen in any other catalog.

Upcoming demonstrations will be to show how



is ideal for hair and feather techniques. With the multiple blades the pattern and spacing of the cuts are easily adjusted.

Number (2) is the "OL' Smoothie Slim" with 3/8 inch barrel and a 1/4 inch blade. I plan to try this on those tight areas where my normal swivel knife is a little clumsy (me -- not the knife).

The last new tool acquired, number (3), is a complete set of **filigree punches**. I intend to use these not only for filigree work, but to help on those tight trim cuts. I am terrible at freehand cutting and need as much help as I can get.

Bob Stelmack
Hamamatsu, Japan

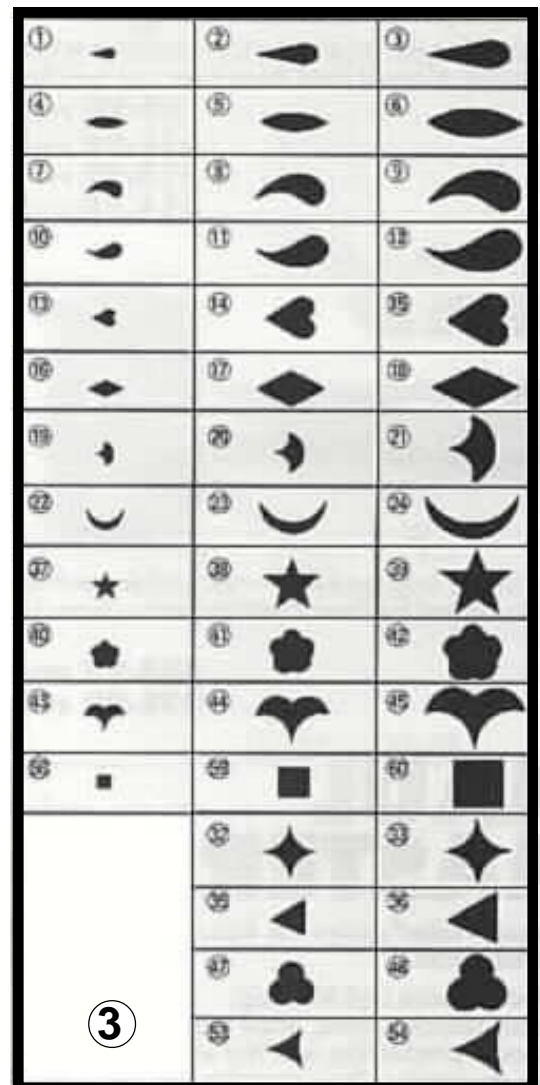
by **Al Stohlman**, but shows a variation and some coloring ideas that make it quite interesting.

Bob Stelmack
Hamamatsu, Japan

After the "Confessions of a Tool Collector" last month, I am a little afraid to show my newest tool additions. I have just acquired two new swivel knives.

Number (1) is the **Swivel Master®** Multi-Blade swivel knife. This is the beauty that is featured in all the **Robb Barr Leather Art Video Series**. It

Tips-Tips-Tips





Toll Free Order Lines
Tel: 1-(888) 263-5277
Fax: 1-(888) 263-5086

Hide Crafter Productions

Offering a 25% discount (10 % on leather) to the PSLAC members
ON-LINE CATALOG <http://www.nwlink.com/~stelmack/hurst>

2017 B White Settlement Road
Ft. Worth, TX 76107

email: hcrafter@flash.net
George Hurst, Manager

1999

The Year of the Rabbit

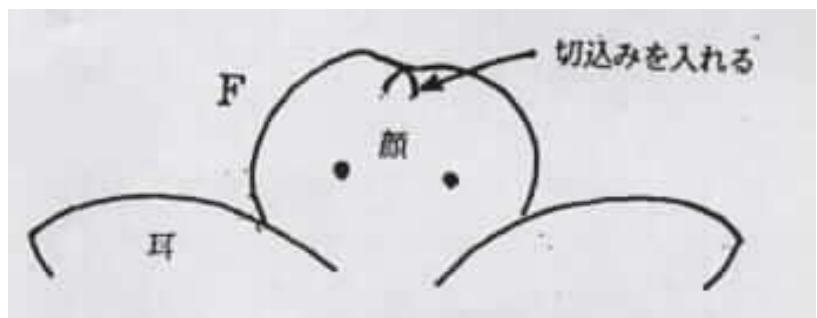
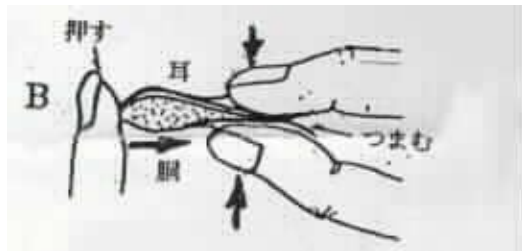
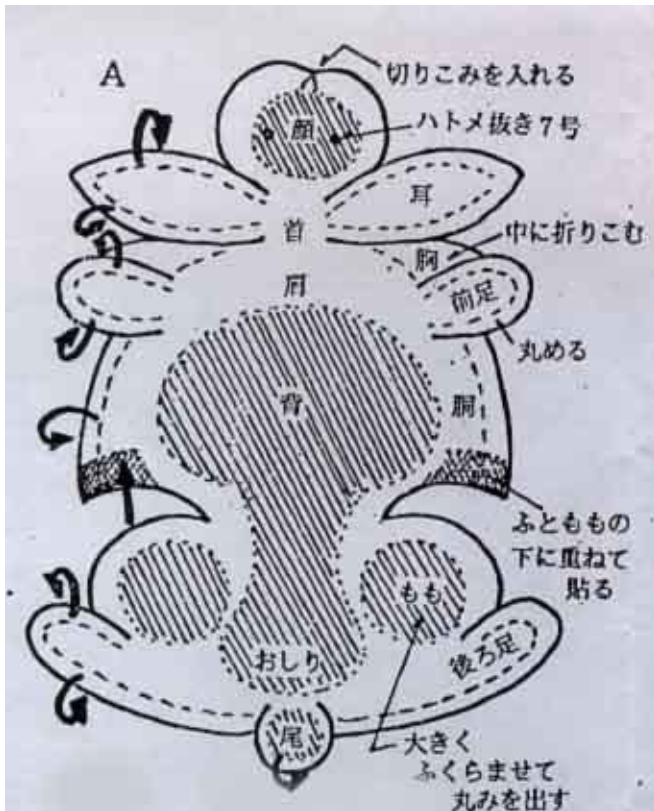
Miaji-san, Hamamatsu Craft Store designed and sells this 1999 "Year of the Rabbit" leather animal kits (500 yen or about \$4) that are "wet formed" into the shape of the rabbit. These were cut with a die and a clicker. Although the instructions are in Japanese, the diagrams and arrows are clear enough to tell what needs to be done.

The kit came with two pink seed beads that were used as the "pink eyes" of the rabbit. Even the top grain tooling leather came dyed white!

This project reminds me of the Puyallup Fair entry of the Santa, sleigh, and eight reindeer made in a similar fashion. Using this idea you could design other animal configurations. Miaji-san did a "Year of the Tiger" for last year and was written up in the local Japanese Newspaper.

How about something from the Northwest: an eagle, bear, salmon, slug, or seagull?

Bob Stelmack
Hamamatsu, Japan



Uncle Bill's Corner

Meeting this month, **January, 31, 1999** at **Linda's** (map on last page). Let's all be there. I will have about 25 copies of the 22 page special edition on "**Designing Your Own Work**", to give away. Bring your Christmas presents (digital cameras etc.). Show us how they work. **ALSO** bring your latest project. Let everyone see how much you all practiced making all of those Christmas Gifts.

Before I forget, quite a few items were brought for the VA Homes. I personally want to thank each and everyone of you. I wish I knew what to say to everyone that these **ITEMS ARE NEEDED** and even though Christmas has come and gone. The need is still there. **Roy Luxton** and **General Seymour** will be more than happy to take anything else that you received for Christmas and really don't know what to do with, to either of these homes.

I talked to **Ann Stohlman** on the 24th of Dec. She is doing good although this was not her happiest Christmas. She needs all of your cards and letters throughout the year.

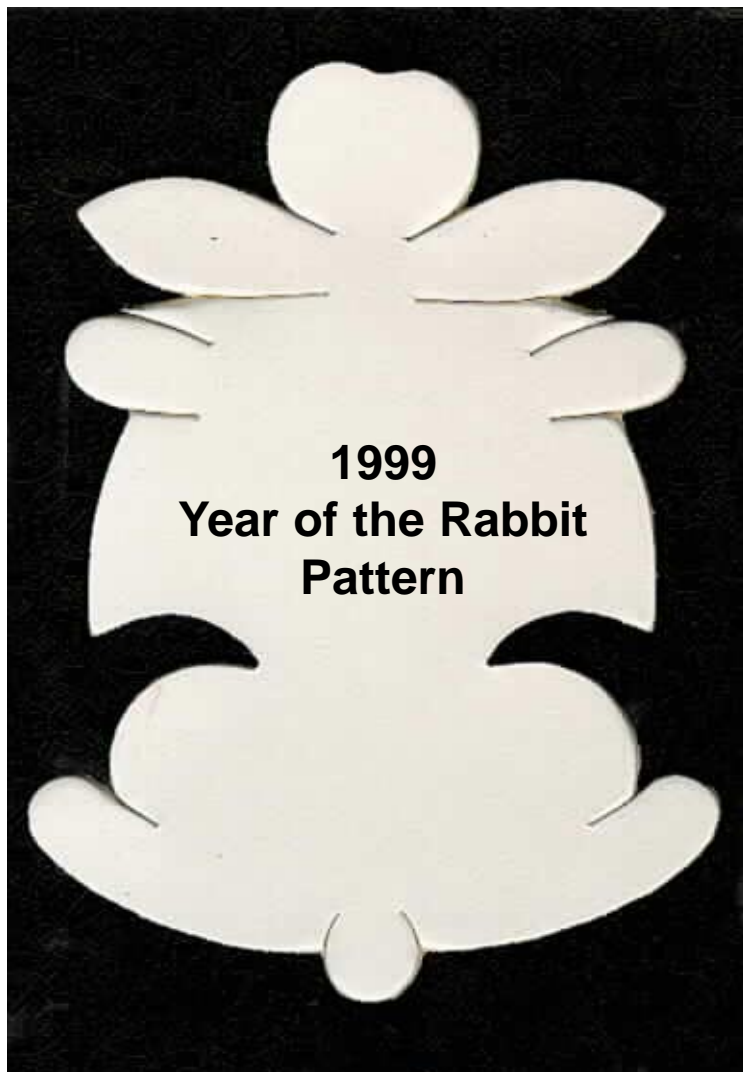
Ann Stohlman
P.O. Box 672
Ashcroft B.C.
VOK 1A0 Canada

1999 is the year. New members. How about a goal of 100 new members. Local and Internet. **MONTHLY** contest for the member who signs up the most new members with a Hidecrafters #1051 "Old Standby" Swivel Knife for a prize. For the **YEAR** the lucky (Hardest Working) person who signs up the most members the prize would be a Hidecrafters #1059 "Pro-line" Swivel Knife. Contest starting February 1, 1999.

Speaking of Contests, our Front Cover Contest seems to have fizzled unless some energetic young person comes up with one at the January Meeting.

I was talking to **Kevin White at Leather Factory in Spokane**, and **George Hurst of Hidecrafters**, and **Jim Linnell of Texas Wholesale Leather** and believe it or not — our members are not utilizing their beautiful **DISCOUNTS**. Check your actual discount before you buy. *Don't forget — this is the year of saving MONEY and the year to gather new members.*

Bill Churchill
Federal Way, WA



Completed
"Year of the Rabbit"

tandy[®]
LEATHER &
CRAFT SUPPLIES

Seattle
Phone: (206) 542-1677
Fax: (206) 546-0979
20003 - Aurora Ave N.
Seattle, WA 98133

Offering a wholesale discount to the PSLAC members

<http://www.tandyleather.com/index.htm>

 **Leather Factory**
Spokane
28 West Boone Ave, Spokane, WA 99201
Phone: (509) 328-9939
Toll Free: 1-800-822-8437
Fax: (509) 326-7019

Offering a wholesale discount to the PSLAC members
<http://www.flash.net/~lfmidas2/index.html>

Kevin White, Manager 

 **TWLeather, Inc.**

Toll Free: **1-800-477-9923**
2017A White Settlement Rd.
Fort Worth, TX 76107
(817) 877-5427, Fax (817) 877-5432
Email: TWLeather@AOL.com

Offering a wholesale discount to the PSLAC members

Jim, Ken & Cal, Managers

 **TANDY LEATHER COMPANY**
14611 First Ave.
Seattle, WA 98168

Phone: (206) 244-0351
Fax: (206) 241-5413
(800) 932-9419

Diana Tulloch
STORE MANAGER



Samples from Deb's New Web Site





Bill's Newest Homemade Tools

Here is a sample billfold back that features three of **Bill Churchill's** latest stamping tools. The tools are shown with their placement in the pattern. After looking at the finished product, the billfold almost resembles a currency note -- maybe the new "leather euro-dollar".

Bill explains how to make the tools:

The billfold back is made with three tools: One homemade, two modified, *and it is so easy.*

First the Triangle tool. Using a nail with a fairly large head, file the head in the shape of a triangle and then use a hacksaw to cut the lines. Try to get the triangle even on all sides and then make the cuts the same distance from each other. How? — Make a tracing on tracing film of the exact size that you want the triangle, including the lines. Cut this tracing out and use rubber cement stick the tracing to the head of the nail. There is your pattern. Hold the nail in a vise and start filing and sawing. In a very short time you will have the tool. Cut the shaft of the "Nail" about the length of a

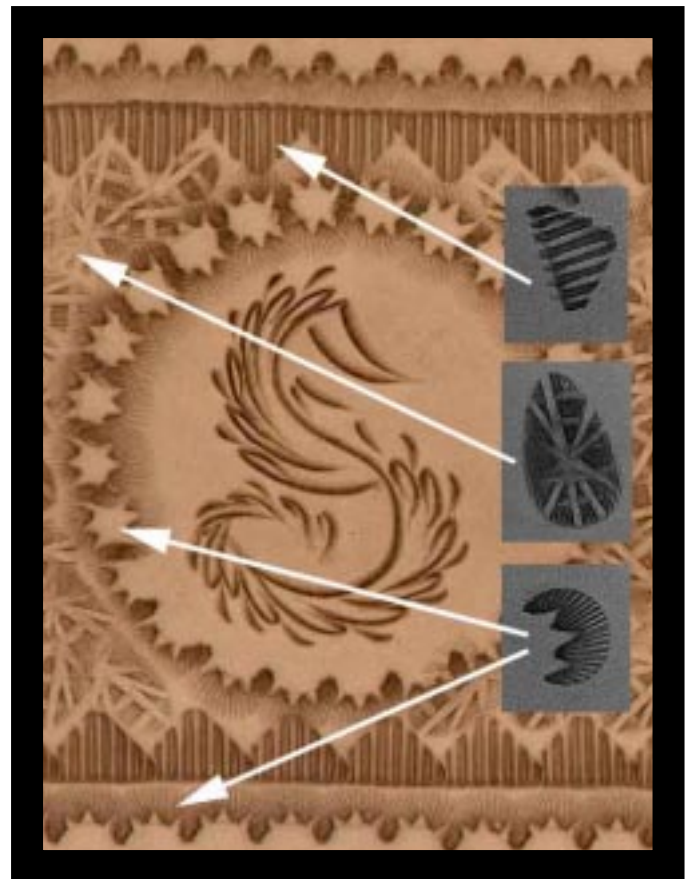
**Always
have a
damp piece
of leather
handy to
try the
tool...**

Regular stamping tool clean the face (head) of the new stamping tool with emery paper and then buff with jeweler's rouge on leather. Always have a damp piece of leather handy to try the tool as YOU DO EACH STEP. This way you know if you have it done right. This will also help to clean your tool.

Second the camouflage tool.

Take any camouflage stamp (I prefer the C431). Using a triangular file, cut three notches in the bottom of the Cam (see picture). This time stamping into damp leather will clean the stamp.

Finally the pearshader tool. Again I have a preference P209 or P215. Put the tool in a vise and then make random cuts in the face with a hacksaw (see picture). Also clean by stamping into damp leather. When using this tool as a background tool keep turning the tool while you are



stamping. That way you will NOT develop a pattern that would distract from the over all pattern. Some companies carry a stamp similar to this but I prefer mine as the Hacksaw cuts are deep and give a much more pronounced pattern in the leather. *Easy, wasn't it?*

Bill Churchill
Federal Way

Kingfisher

Here is my latest portfolio that I have made for a Japanese friend of mine. He is a bird watcher and indicated that his favorite bird was the **Kingfisher**. This bird is quite common around the lake here in Hamamatsu and is noticeable by its irradencent blue back. I used the pearlesent powers to color the back and highlights. The Kingfisher is perched a top a **lotus blossom** which is cultivated around this area. The lotus blossom, when open, is an off white color and is a symbol used in the Japanese religious art work. The portfolio is constructed of 2-2 1/2 oz. tooling leather, inside and out. The carving is done over an embossed oval cut out. The pattern for the oval came from using a computer drawing package (Canvas 5.0 -- my freehand oval are pretty shakey). The portfolio fits B4 notebooks which are a little smaller that the normal 8.5 x 11 inch U.S. paper.

Bob Stelmack
Hamamatsu, Japan



Ken Ready for the Craft Shows!

Ken Imus sent in a nice card for the holidays and enclosed an unusual picture.

Ken had laid out on a table the finished leather products that he takes "on-the-road" whenever he goes to a craft show. There was some fun just identifying and counting up the items on the table -- and in the back ground.

Some of the items were recognizable from demonstrations he had given at the **PSLAC** meetings: Ball Bearing Embossing, Leather Batiking and even some projects from the classes he has taken from **Robb Barr, Tony Laier,**

Bill Churchill, and **Deb Laudadio.**

Ken has quite a talent for creating useful leather articles.

RG On-line

The Puget Sound Leather Artisans Co-Op can be found at

<http://www.nwlink.com/~stelmack/toc.htm>

If you need the **UserId** and **Password** for the subscription pages, just contact the **Rawhide Gazette** at: (253)839-3038 or email at churchil@nwlink.com ...or...

stelmack@nwlink.com -- of course the password information is free for the Puget Sound Leather Artisans Co-Op members. Those on the Internet still need the \$10 per year subscription rate.

Web Editor: Bob Stelmack
Sanaruko Parktown South #1101
Tomitsuka-Cho 1933-1
Hamamatsu-Shi 432-8002
Japan

Your Photos here -- if you send them in to:

PSLAC (ph. 253-839-3038)
c/o Bill Churchill
1471 South 302nd
Federal Way, WA 98003

Photos taken and sent in to the PSLAC are, space and focus permitting, used here in the printed newsletter.

They are also posted, in living color, on the Internet.

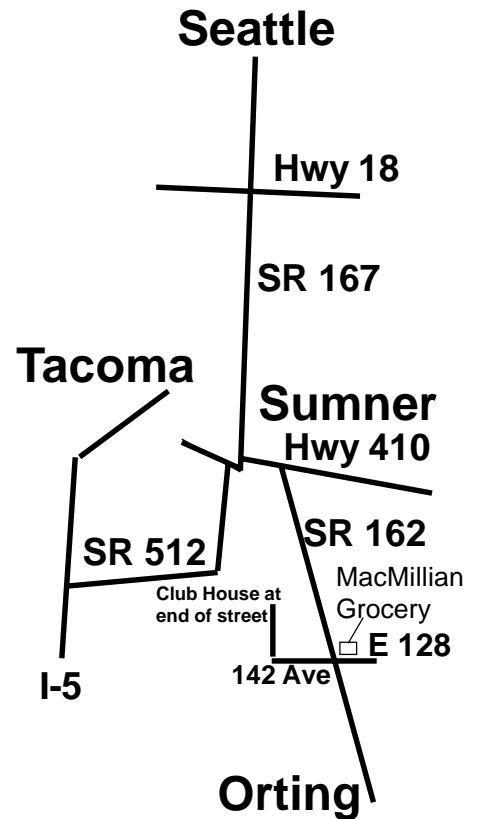
Tacoma
Phone: (253) 474-1777
Fax: (253) 474-1777
5429 - S. Tacoma Way
PO Box 9246
Tacoma, WA 98409

tandy® LEATHER & CRAFT SUPPLIES

Offering a wholesale discount to the PSLAC members

<http://www.tandy-leather.com/index.htm>

Map to Linda's Club House



PSLAC

c/o General Seymour
17915 212th Ave. E.
Orting, WA 98360-9622

