

Rawhide Gazette

Copyright (c) 1997 by PSLAC, All Rights Reserved

Volume 3, Issue 6

Puget Sound Leather Artisans Co-Op

August 1997

Hide Highlights

- Uncle Bill's Corner -- Alphabet Soup
- Members' Leather Pictures
- Puyallup Fair Reminder!!!
- Making Stamping Dies at Home
- Blacker Blacks
- Tips-Tips-Tips
- Spanish Leather Embossing
- ...and much more!

UNCLE BILL'S CORNER

WOULD YOU BELIEVE AUGUST? Why it seems just like yesterday that I was eating at that fabulous picnic. WHICH REMINDS ME. I NEGLECTED TO PRAISE FRED and LINDA STOCKHAUSEN for all of that hard work they put in on the picnic. Please forgive me. You did a good job and I know that everyone else remembered to praise you.

I received a package from **BILL GAYLORD** last month and it had a plastic ring in it. See the short article about the plastic ring. It just goes to show you that no matter how hard you try someone always comes up with refinements. And I tried the ring and it WORKS PERFECT!!!!. Thank you Mr. Gaylord — that is clever.

I have seen a couple of the entries for the **PUYALLUP FAIR**. Makes me feel like an amateur. Seriously, there are going to be some fantastic entries. Don't forget, we have to beat the wood carvers. Remember a short while ago when we had three entries for the fair ... And they were going to stop leather at the fair. We have worked hard, so let's keep it up. Actually PSLAC can support the fair. Are we going to get 100 entries this year.?

DO NOT FORGET!!! There will be one heck of a raffle at the SEPTEMBER meeting.

Bob Stelmack, Our RAWHIDE GAZETTE editor is pretty sneaky. He designed a brochure and never said anything to anyone. I just happened to see them at the **Burien Tandy Store**. They are real nice (even though it does have General's and my picture in it). The EXECUTIVE COMMITTEE has O.K'd it with a resounding YES. Bob, we Thank you. Maybe Bob will print a copy of it in this Newsletter. It makes us really high class.

(ed. note: See last page for a brochure you can duplicate and give to others interested in leathercraft.)

I am putting in some alphabets this month. I have been asked for Certain alphabet letters down through the years and so I am finally putting a few in. Mainly these are from **DOVER Books**. Although before I started Leathercraft I used to sit in the library at GOOSE BAY, LABRADOR copying alphabets from different books there. To me, letters from different styles of alphabets are beautiful. And you can make beautiful pictures just using letters. Remember, you can take just one letter and reduce it, enlarge it or add to it, take away from it anything you want to do.

A-1 and A-2 are letters that most leathercraftsmen are familiar with.

A-3 are SILHOUETTE letters. Actually designed to be used by themselves. I would enlarge the one of my choice and use only swivel knife and then dye with TOMBO (Japanese Brushes) and Ballpoint Pens. Just one of the letters on the front of a Checkbook, Billfold, Notebook, or Photograph album, would be beautiful. You don't have to color these black — red, yellow, or any color will do.

Alphabet A-3 is very innovative. You can have a lot of fun with your different tools with this one. Also with different color of dyes.

A-4 and A-5 are the Ultimate in SWIVEL KNIFE EXERCISES. Enough said on this one.

Now A-6 and A-7 is the one that I get the most requests for. I usually enlarge

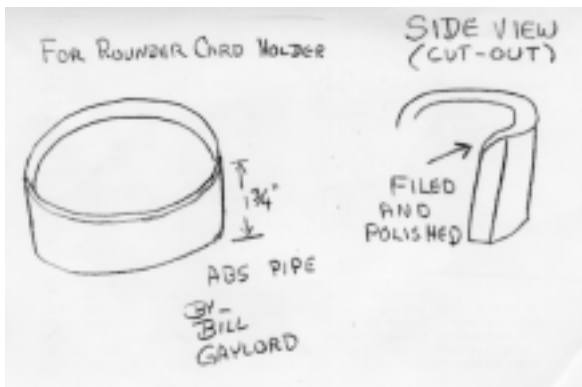
<http://www.nwlink.com/~stelmack/pslac.htm>

the letter that I want. And sometimes I will add lines (“CURLICUES”) I might even remove some lines or change direction to make them fit the particular project I am doing. But BE SURE that ALL THE LINES ARE ABLE TO CONNECT. Do not just start a line out of nowhere and expect it to be correct.

Bill Churchill
Federal Way, WA

Gaylord's Technical Improvement

I made a few of your card holders from 3 1/4" rounders per the article in PSLAC's newsletter with the intention of making a lot more for a craft sale my parish is having in November. The folks that I talked to sure liked your idea and thought it would be a good seller, especially for some of the older folks who have arthritis. I did have a little trouble with getting the wet leather into a coffee cup, so I thought about a ring and came up with the enclosed. I made the ring from 3" schedule 40, ABS pipe which is priced — \$1.19/foot at the local TRUE VALUE, so the cost of the ring is very



low. It took me about 5 minutes to make this so you can make a lot of these and go “INTO MASS PRODUCTION”.

Bill Gaylord
Port Orchard, WA

(Bill's Note: I tried the ring and it works perfect..And you don't have to wash them afterwards to drink coffee. Thanks Bill, You did it again!!)

The Al & Ann Stohlman Museum Is Moving

(ed. note: This a reprint of an important article found in the Lone Star Leather Crafters Newsletter. To subscribe to the Lone Star Leathercrafters Newsletter — contact Mike Rodgers, 1537 Oaks Dr., Quinlan, TX 75474-4715)

“The new location is now more available to the general public. It's moving to the Ft. Worth stockyards. It will be located in Stockyard Station next door to Riske's. This is something to look forward to. You might even want to include it on a sight seeing tour for visiting relatives.

Not only is the museum moving, but a new Tandy store is going to open in the same area. This will be a different kind of Tandy store. This store will cater to the largely tourist trade that visits the Stockyards and will feature finished goods and a consignment area where works of art created by some of the top names in the field will be for sale. This should help make the public more aware of the broad range of leather items and art work.

Look for the grand opening to occur during the **IFOLG** show in October. If you're

visiting from out of town, plan to put this on your schedule. In case you're really anxious, you might scout the area out in a about 3-4 weeks. An actual opening will occur prior to October, but plan on stopping by during the grand

opening also.

Thanks to **Don McGown** for the heads up on this.”

Puyallup Fair Entry Details — Last Chance!!!

For all Leathercraft bring your items to the Hobby Hall on August 22nd, 23rd or 24th between 9am & 4pm. Entry forms will be filled out at the time of entry. There is no entry fee or pre-registration. Items will be judged, then displayed during Fair. Return dates are Tuesday, Sept. 23rd, 9am - 8pm and Wednesday, Sept. 24th, 9am - 5pm. Items will no longer be stored if they are not picked up. Anything remaining after Wednesday, September 24th will be donated to charity or discarded.

Division C — LEATHERCRAFT

Entry dates for this Division are August 22nd, 23rd and 24th, 1997 between 9am and 4pm. Return dates are Tuesday, September 23rd, 9am to 8pm and Wednesday, September 24th, 9am to 5pm. All articles must be the handwork of the exhibitor and finished within the last two years. Entries will be judged for design, technique and overall appearance.

ADDITIONAL AWARDS:

Best in Division - Purple Rosette - \$100 premium,
Best in Category - Ribbon (no premium)

JUNIORS (under 16 years of age)

Class	1st	2nd
1800. POCKET ITEMS	\$5	\$3
1810. WALLETS	\$5	\$3
1820. OTHER ITEMS	\$5	\$3

SENIORS (16 years of age and older)

Class	Item	1st	2nd
1850.	PICTURES	\$10	\$5
1855.	TOOLED SPORTSMAN CARRIERS	\$10	\$5
1860.	TOOLED CARRYING CASES	\$10	\$5

1865. TOOLED HANDBAGS	\$10	\$5
1870. TOOLED POCKET ITEMS	\$10	\$5
1875. ALBUMS, SCRAPBOOKS	\$10	\$5
1880. WALLETS	\$10	\$5
1885. BELTS	\$10	\$5
1890. HOUSEHOLD ITEMS	\$10	\$5
1895. STAMPED ITEMS	\$10	\$5
1900. JEWELRY	\$10	\$5
1905. WEARING APPAREL	\$10	\$5
1910. UNTOOLED ITEMS	\$10	\$5
1915. BRAIDING	\$10	\$5
1920. OTHER LEATHERCRAFT	\$10	\$5

Division C — LEATHERCRAFT TEACHERS AND PROFESSIONALS (Professionals making over \$2,000 per year or teaching Leathercraft)

Entry dates for this Division are August 22nd, 23rd and 24th, 1997 between 9am and 4pm.
 Return dates are Tuesday, September 23rd, 9am to 8pm and Wednesday, September 24th, 9am to 5pm.
 All articles must be the handwork of the exhibitor and finished within the last two years.
 Entries will be judged for design, technique and overall appearance.

ADDITIONAL AWARDS:

Best in Division - Purple Rosette - \$100 gift certificate from Tandy Leather Company.

First and second premium awards will be \$10 and \$5 Gift Certificates from Tandy Leather Company

Class	Item	1st	2nd
1950.	PICTURES	\$10	\$5
1955.	LARGE TOOLED ARTICLE	\$10	\$5
1960.	SMALL TOOLED ARTICLE	\$10	\$5
1965.	LEATHER WITH OTHER MEDIUM	\$10	\$5
1970.	WEARING APPAREL	\$10	\$5
1975.	UNTOOLED ARTICLES	\$10	\$5

Departmental Exhibitors Rules And Regulations

The Association will have officers on the grounds and will use every reasonable precaution in its power for the preservation and protection of persons, articles on exhibition, livestock and

property, but will not be responsible for loss or damage by theft, fire or otherwise.

Premiums And Awards

First premiums shall be designated by blue ribbons, second premiums by red ribbons, third premiums by white ribbons, fourth premiums by pink ribbons and fifth premiums by yellow ribbons.

Judging

Judges are selected from professionals or highly accredited amateur artists working within their field of expertise. Judging begins August 1 - 9am to Noon. Employees of the Hobby Hall Building are not eligible to judge.

Awards

Each division will have a Grand Champion - Best of Division Award given to the most outstanding entry of that Division. There may be one Blue, (1st), one Red (2nd) and one White (3rd) ribbon given in each class. Premiums will be awarded as listed for each division.

Other awards will include Honorable Mention and Special Awards

Excerpt from the Official RULES

The general rules (Rules and Regulations) governing all departments of the Fair are to be observed with a few additions:

1. Mail-in entries will not be accepted.
2. No entry fees will be charged.
3. All articles must be the handwork of an individual exhibitor. They must be finished within the last 2 years. No article can be exhibited a second year. SOILED OR OBVIOUSLY USED ITEMS WILL NOT BE ACCEPTED.
4. Employees in the Hobby Hall Department are not allowed to enter articles for premiums.
5. ALL ITEMS WILL BE PLACED IN THE MOST SUITABLE CLASS. Each entrant shall be limited to ONE

ENTRY PER CLASS, as to enter more would in effect be competing against oneself, i.e., 1 doll house, 1 doll house accessory. Entries may be reclassified by staff or judges.

6. All awards need not necessarily be awarded in each class at the discretion of the judge.
7. The Hobby Hall Department is mainly for amateur craftspersons to compete and exhibit their work. Anyone who sells more than \$2000 per year, who teaches or has a teaching certificate for that craft, or who demonstrates that craft where supplies or finished works are sold is considered a professional by the Western Washington Fair.
8. No pre-registration is required.
9. All items placed on display must remain for the full length of the Fair.

Next Meeting in September -- is !!!NEXT Month!!!

Mark your calendar! The usual place in TUKWILA .. **SUNDAY, 2-4pm, September 28, 1997** is the next PSLAC meeting at the Foster Greens Apartment, Information Center (Recreation Center), 13865 - Interurban Ave, Tukwila, WA. All members and sponsors are invited... Just a reminder that parking at the apartment complex is very tight and that 50 feet south of the meeting room is a business that is not open on Sunday - park at your own risk

Well Wishes for a New Member

Umberto Rodriguez, who lives in Federal Way, has had some serious heart surgery and is in recovery. We all wish him a speedy recovery.

Puyallup Fair Demos

As usual, there will be demonstrations of ALL the crafts on exhibit at the Hobby Hall during the Puyallup Fair. Each demonstrator gets a period of time to show the Fair Goers a little about their hobby. Several of our **PSLAC Members** have been demonstrating for years at the Fair. **Bill Churchill** and **Larry Riekema**, the **Tacoma Tandy Manager**, have been doing it for over 14 years. If you get a chance, stop by and see our Members "in-action".

Bill Churchill and **Larry Riekema** will be demonstrating in the Hobby on the following dates and times:

Sept 6th	6:30 - 8:30pm
Sept 8th	6:30 - 8:30pm
Sept 12th	6:30 - 8:30pm
Sept 16th	6:30 - 8:30pm
Sept 18th	6:30 - 8:30pm

Bob Stelmack will be demonstrating in the Hobby on the following dates and times:

Sept 7th	1:30 - 3:30pm
Sept 20th	1:30 - 3:30pm

If you would like to demo next year, just ask at the Hobby Hall.

Tips Tips Tips

If you are tired and don't have the patience to trace the pattern, then trace again to apply to the leather — try this:

Go to your local copy store and ask them to copy your picture to a clear overhead transparency. This will give you an accurate picture to place on the leather for the transfer process. Tracing the picture while it is on the leather is different. The toner on the transparency flakes off as you trace (you can see what has been traced and what has not been traced). Be sure to

brush off all traces of the black toner flakes to keep your leather clean.

Bob Stelmack
Tukwila, WA

Simple, Inexpensive Leather Pattern Stamping Dies

I have often looked for a way to reproduce a carving I like without "re-carving" it. This has probably already been done, but I stumbled onto a cheap way to make your own Leather Stamping Die.



After attending some artistic classes at the local Daniel Smiths Art Supply Store, I was taking a class on "Block Printing Icons of the Northwest" by **Carl Montford**. He demonstrated

linoleum cutting to produce designs for printing. The linoleum he used was not the old type I was used to from my Junior High School days, but was much smoother and more dense (Daniel Smith's Lino Block, 3"x5", part number RG9780003, cost \$2.15 ...or... 2"x3", part number RG9780002, cost \$1.80). It was easy to carve, with various gouges, much like what a woodcarver would use. I carved a Northwest Indian Orca Whale,

for a quick test, and saw that it looked much like a large leather



die. After printing a sample on paper, for the class, I took the block to work and placed a cased piece of leather, along with the carved block, between sheets of steel and pressed it with a 12 ton shop press. "It Worked!" The



designed was transferred and the block was still intact — showing no sign of wear. I did two more with similar results.



I learned several things while trying this technique:

- 1 - Think in reverse. What you cut out become the high spots on the leather, what you leave becomes the pseudo "cuts" in the leather.
- 2 - Simple designs yield stunning results.

- 3 - Think dyslexic. All numbers, letters, and designs are "mirror image". (I still remember Bill's article in the "Leathercrafters & Saddlers Journal" where he ground a bridge spike into a musical quarter note leather stamp with the flag on the note going the wrong way.)
- 4 - Think small. The larger the pattern, the more pressure is needed. The pattern shown was approximately 3 x 5 inches. Anything larger would require thicker steel plates and more pressure.
- 5 - Carve the edges and sides deep and almost straight down. The pattern is better defined and the linoleum carving marks show up much less.

Try this technique with **Bill's "Homemade Clicker" article.**

Bob Stelmack
Tukwila, WA

Book Review — Spanish Leather

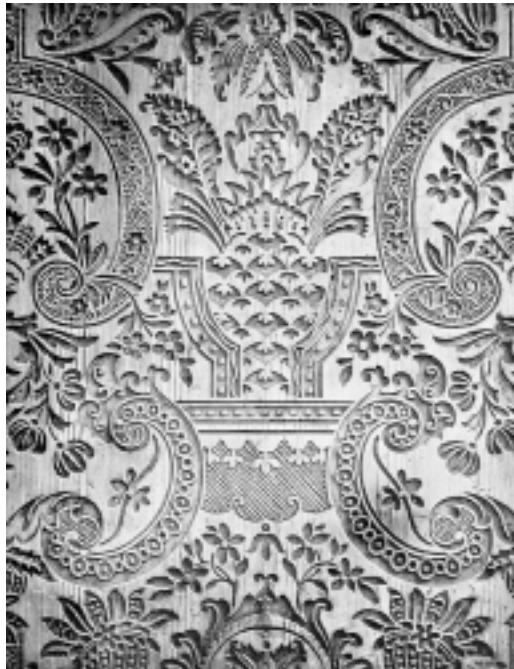
In an old book store, I found "Spanish Leather", by **John W. Waterer**, published by Faber and Faber LTD, London, copyright 1971 that describes the leather techniques used by the Spanish during the Middle Ages. Most articles were gilt leather hangings used to decorate castles and palaces.

One of the few remaining wooden molds used to form the embossed leather is shown here. The cased leather was placed hide side down on the wooden mold and a counter-mold was made of waste leather (much like the leather plug technique that the **Stohlman's** discuss in their "The Art

of Embossing Leather" book). This counter-mold was placed on a press where it was run through rollers several times. This allowed the same pattern to be repeated over and over again on different pieces of leather or repeated on the same leather to make a larger pattern.

The book also shows and describes many techniques of embossing, dyeing, painting, and coloring leather. The popularity of this leather art began to decline in late 18th century. Lucky for us that John W. Waterer collected pictures and descriptions of the techniques used.

Bob Stelmack
Tukwila, WA



Kitchen Knife Holder — Update

Bill has created a new Kitchen Knife Holder with his award winning "Humming Bird & Hibiscus Flower" pattern. Once again the picture does not do the project justice.

Sale Items



(ed. note: Just a reminder that there are items still for sale. See last months RawHide Gazette for detailed listings.)

All offers will be considered, so don't hesitate to say a price, even if it sounds unfair. Our goal is to have the storage units clear by Sept. 1, 1997, which means all of the items listed will need to be sold and moved out by that time. Since we will be eliminating the storage costs, no offer will seem unreasonable!

Cash or checks will be accepted. Payment plans will even be considered, upon approval of credit.

The storage units are about 6 blocks from the main shop. The name of my shop is "Extra Care Handbag Repair", 15418 8th Ave. SW, Burien (Seattle) WA 98166. I work Sundays at variable hours, but am here most of the time Monday through Friday. If calling, you can leave a message and I'll return your long distance call, too.

Extra Care Handbag Repair
Jeannie Nelson (253)241-5770
15418 8th Ave. S.W.

Burien, WA 98166
Inquiries:
Vern: (253) 248-2618

Blacker Blacks

(ed. note: One of the IILG members was asking about getting better results with black dye. The following are some of the email responses)

-----first message-----

It sounds as if you may be using Fiebings institutional dye which is not a mineral based dye. This dye does not appear to be black but rather a brownish black, until it is sprayed with Resolene (recommended by Fiebings) and then it looks pretty good, but never as black as the mineral or oil based dye. I have tried just about every type of application known to man including high tech spraying with the finest guns, and without question, using a small tight napped 3/4 " diameter by 4" paint roller does the best job of applying an even coat, especially when doing large, flat pieces of leather. No over spray and the vapors are much easier controlled by placing a fan at one end of your work. Daubers are OK I guess on small pieces of leather, but I have found that it is very difficult to get an even application with a dauber. I do use them but only on the edges. If you are using Fiebings mineral based dyes, and buff out after completely dry, the color should not rub off, even with no finish. If you are using the institutional dye, it needs to be sealed with Resolene or it will rub off forever and ever. Hope this helps.

Jack

-----next message-----

As someone else has already mentioned I use Indigo spirit dye before applying my black dye. The Indigo spirit dye gets deep into the leather where the black pigment cannot. This also gives you a deeper black. Next you have to buff the finished black really good and preferably apply a

second coat of black , again buffing really vigorously. Lastly you need to apply a good final sealer coat of your choice , this coating will depend on the final appearance you wish to achieve. Hope this is of help.

Frank :)

-----next message-----

I go back quite a ways, so will tell you how to get the leather to dye a true black, and stay black.

Give the leather a coat of either Red or Dark blue to start with.

When this is dry, repeat the process so you get good coverage. Buff it off between coats of dye to remove excess pigments. After 2 coats of the dye to make it opaque, give it either one or two coats of black spirit dye,

buffing it between each coat. Doing it this way makes sure you get good deep penetration and a scratch won't show the natural leather shining through.

It means a little more work but guarantees a better job.

Hope this helps
Catch you later

Bill

-----next message-----

Hello all...I make black dyed products for police, correctional and the security related fields. I dip dye all the items after they are made in Fiebings Black Oil Dye. I'm sure the DYO brand oil dyes are equivalent, but Fiebings I can attest to. Afterwards I hang them in

Letters to the Editor (& PSLAC)....

No letter this month -- sorry

our hot Arizona sunshine to completely dry. I have rigged up a 3750 electric motor with a horse hair wheel brush. The high speed of this motor w/brush burnishes the black into the leather. It doesn't polish it, but burnishes it because of the speed. For final finish on these items I take a make-up sponge and wipe on one coat of "Leather Luster". This product is available at stores that sell a large selection of shoe care products. After I air dry these thoroughly I know that the black will not rub off. My dip dye tanks are usually old Tupperware bowls of various depths. Dying things black is really a challenge and would be interested in how others do it too!!!

George Cubic
GC Custom Leather
Co. Tucson AZ

RawHide Gazette On-line

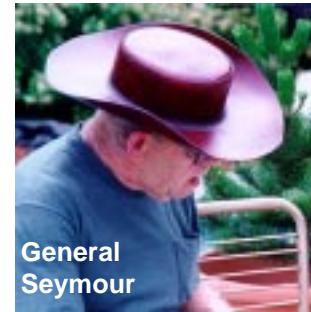
The Puget Sound Leather Artisans Co-Op can be found at <http://www.nwlink.com/~stelmack/pslac.htm>

If you need the **UserId** and **Password** for the subscription pages, just contact the RawHide Gazette at: (206)431-5166 or email at stelmack@nwlink.com -- of course the free password information is just for the Puget Sound Leather Artisans Co-Op members. Those on the Internet still need the \$10 per year subscription rate.

Photos taken and sent in to the PSLAC are, space and focus permitting, used here in the printed newsletter.

They are also posted, in living color, on the Internet.

Your Photos here -- if you send them in to: PSLAC (ph. 206-431-5166)
c/o Bob Stelmack
13820 - 56th Ave S, #301
Seattle, WA 98168-4779



General Seymour

General Seymour's Hair-on-Hide Vest

THE PUYALLUP FAIR

Thinking about the Fair? It's about that time!

The Fair is scheduled for Friday, September 5th through Sunday, September 21st. See the internet for more details:

<http://www.thefair.com>

PSLAC Membership Application

If you know someone who is interested in leathercraft — give them this information:

Puget Sound Leather Artisan Co-Op MEMBERSHIP APPLICATION

YOUR NAME: _____

STREET ADDRESS: _____

CITY, STATE, ZIP: _____

PHONE NUMBER: (____)- _____

We publish a membership list with our members expertise listed. This list is used to refer possible clients to the best person for the job. Tell a little about yourself, how you got started in leather, what your favorite things to do in leather and other crafts and/or art forms.

Send this form along with your first years dues (\$24.00) to one of the directors listed below:

Bill Churchill

1471 South 302nd
Federal Way, WA 98003
(206) 839-3038

General Seymour

17915 212th Ave. E.
Orting, WA, 98360-9622
(360) 893-6759

Fred Natchbar

1324 Flower Ave.
Port Orchard, WA 98366
(206)- 876-6227

Don Betts

12613 67th Ave. E.,
Puyallup, WA 98373
(206) 848-2649

If you would like to subscribe to The Leather Crafters & Saddlers Journal through the Co-Op and include an additional \$24.00 for a one year subscription.

-----next message-----

I can only speak for myself, but I have the best results with DOMESTIC leather, it just seems to carve, accept dye and oil so much better than the imported stuff; something to do with the tanning process I suppose. I use Fiebings Dye Prep (smells like ammonia), and I have had good luck applying a coat of pure neatsfoot oil before the dye. I usually apply three coats of black dye, rubbing briskly with a towel or piece of sheepskin between coats to remove any dye that might come off, then I usually top it of with Fiebings Tankote. Don't get discouraged, EXPERIMENT with pieces of scrap leather and you will come up with something that works for you. There are a couple of photos of saddles that I made and dyed black on my web page at: <http://www.homepages.together.net/~merrigan>

Good Luck and be patient,
Mike

-----next message-----

Howdy Bonnie. I use Fiebings Black Oil Dye, I use to spray large things but found out it doesn't penetrate. I just use a felt dauber on small things and a wool scrap on large. Two coats usually does the trick and I do polish after each coat. I finish almost all my jobs with Neat-Lac spray, I've never had the black rub off on anything except a motorcycle seat I carved for my brother.(that was when I sprayed the black on) I make a lot of black holsters, wallets, badge & id. cases....

One recommendation I can make with Tandy's black dye is to cut it by adding a third of denatured alcohol. Basically I've found that it helps to 'carry' the dye into the leather and you'll get a better appearance. Then dye it black. This helps with darkness and permanency. Good luck.

Dean in Philadelphia

-----end of messages-----

Book Binding Classes

David Burroughs has offered several book binding classes at Daniel Smith's Art Supply and is planning to offer classes beginning next year.

Those who are interested should contact him for the type of class you are interested in. I have taken two classes from him: 1) Traditional Book Binding that is true to the methods used by the Monks over 500



years ago, and 2) Conventional Modern Day Book Binding.

Here are some pictures of David, patiently overseeing my attempts at "hot stamping" gold onto the leather inlay for the cotton/linen covered bound book.

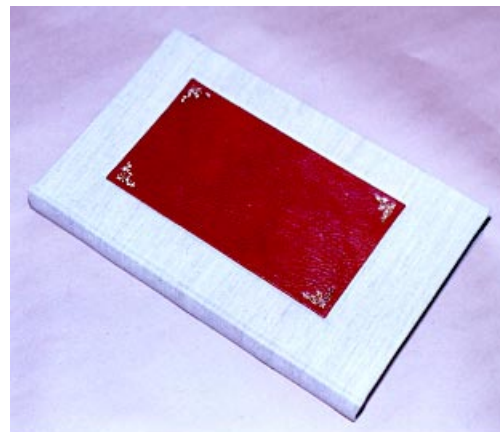
The classes took the student through the entire process from

cutting the paper to form the pages to the final assembly.

To contact David:



Dave Burroughs
PO Box 276
Port Townsend, WA 98368
Ph. (360) 385-6839



A B C D E F G H I

J K L M N O P Q R

S T U V W X Y Z

A-1

a b c d e f g h i j k l m

n o p q r s t u v w x y z

. 1 2 3 4 5 6 7 8 9 .





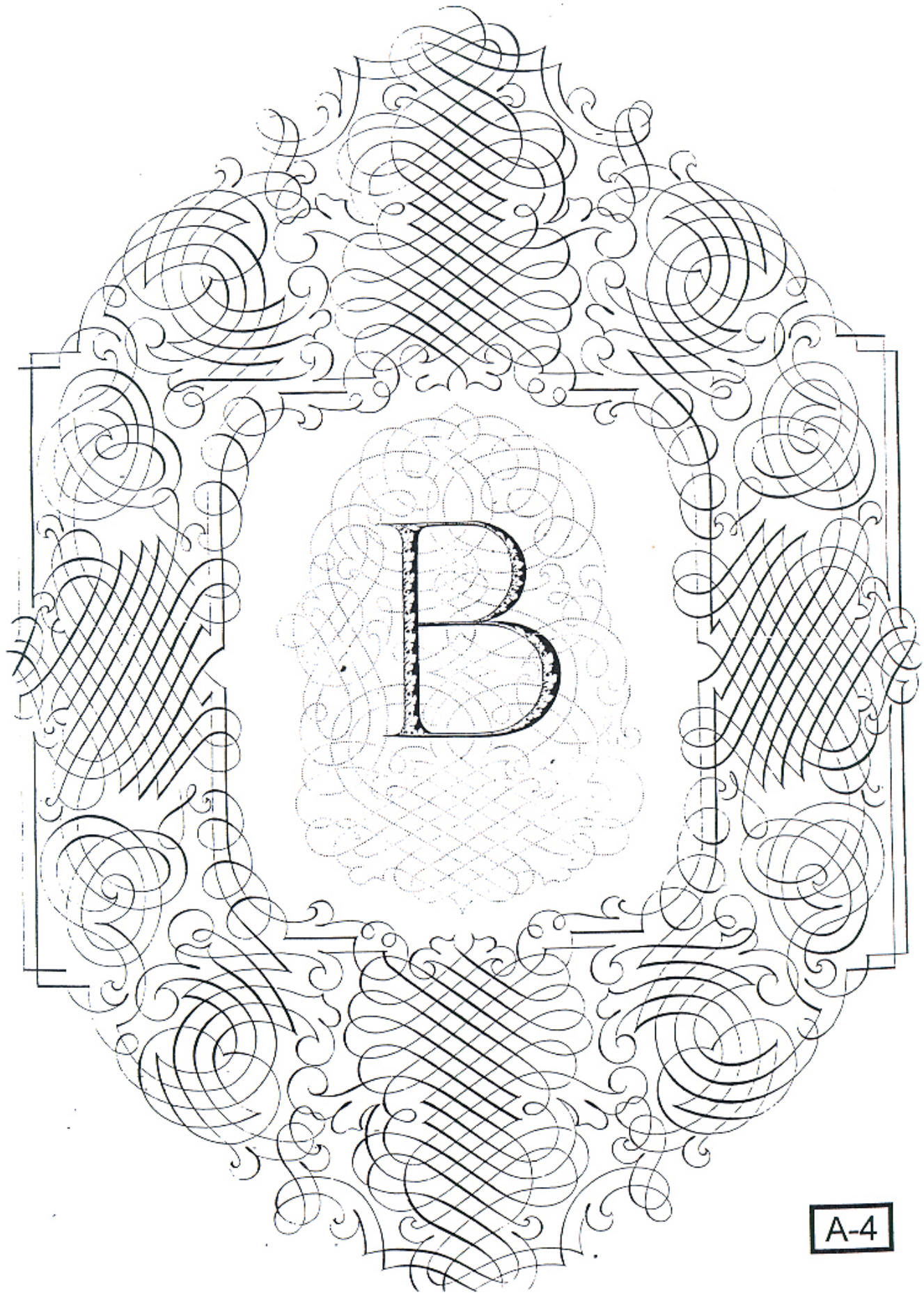
A B C D E F G H I

J K L M N O P Q R

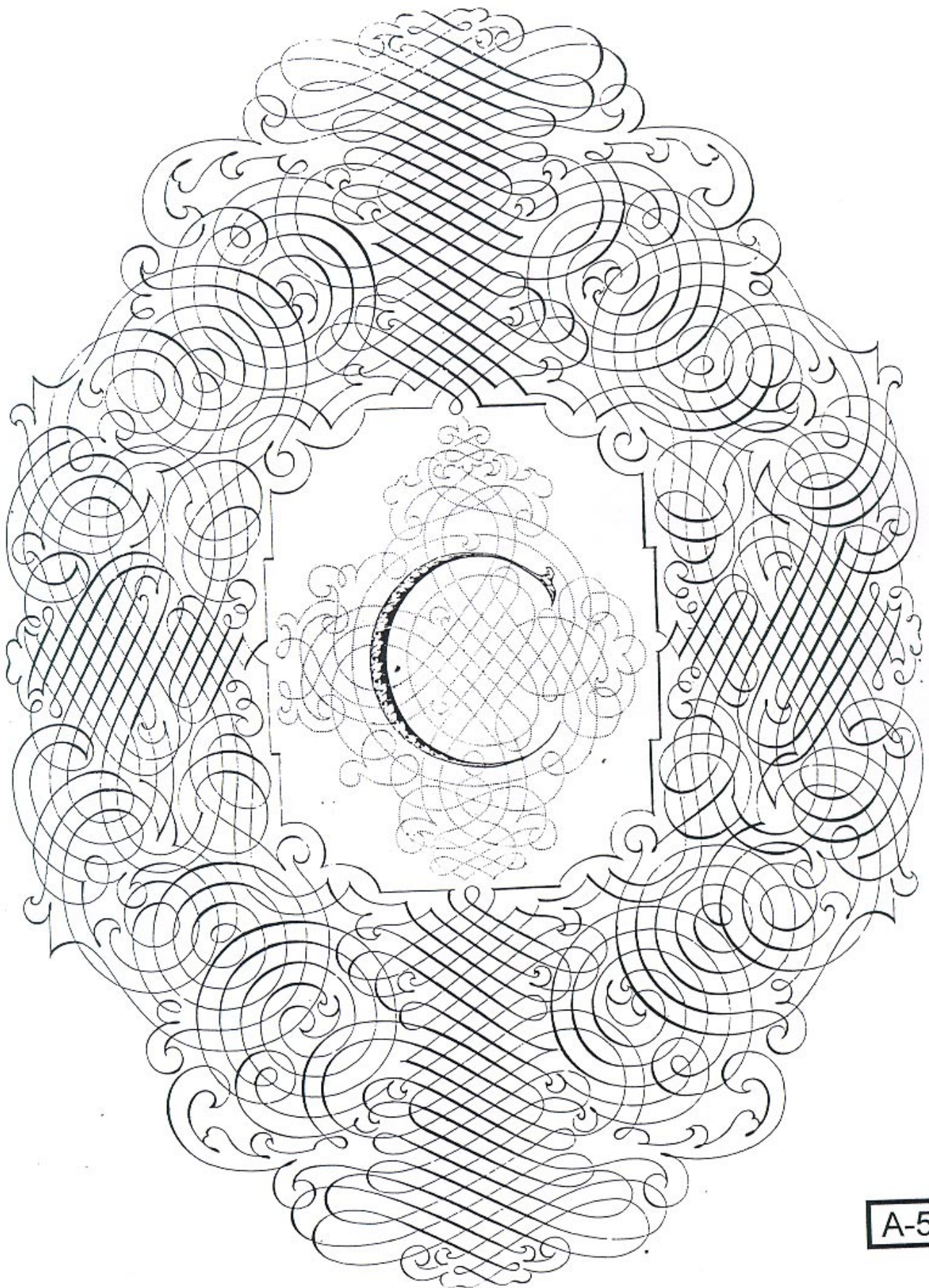
S T U V W X Y Z ?

a b c d e f g h i j k l m

n o p q r s t u v w x y z



A-4



A-5

2 H X a r s j a b d o m
m i g l i q h i o s o q w
0 6 8 2 9 5 4 3 2 1