

Volume 4, Issue 7

# Raw Hide Gazette

## Hide Highlights

---

- Special:  
Rounders
- Meeting Minutes
- Uncle Bill's  
Corner
- Tips-Tips-Tips
- Far East Report:  
Japan Leather  
Forum -- Focus  
on Flowers
- Advertisement  
Space now  
Available

Puget Sound Leather Artisans Co-Op

September 1998

Deb Laudadio

# Raw Hide Gazette

Copyright (c) 1998 by PSLAC, All Rights Reserved

"Without question, the Raw Hide Gazette is by far the best and most informative and comprehensive Guild publications of all of them! You are to be commended for your very fine and professional efforts. Keep up the good work. With admiration"  
/signed/  
Al & Ann Stohlman, December 1997

Volume 4, Issue 7

Puget Sound Leather Artisans Co-Op

September 1998

## Hide Highlights

- Next Meeting Announcement
- Special: Rounders
- Meeting Minutes
- Uncle Bill's Corner
- Tips-Tips-Tips
- Far East Report: Japan Leather Forum -- Focus on Flowers
- Advertisement Space now Available

## Next Meeting

The next meeting will be *Sunday, September 27th, 2:00-4:00pm*. Location: At Linda's (see map on last page for directions). Bring your Summer Projects to share with others.



just plain dirt. So it got it's "Monthly" bath—SOS and Ajax, dried completely, then another wax job.

### ...another tip

This is a tip that I usually give to my students on the first day of class: BUY, BEG, BORROW, STEAL EVERY BOOK THAT YOU CAN

GET YOUR HANDS ON (EXCEPT MINE). READ AND STUDY THESE BOOKS. The people that wrote these books spent thousands of hours and thousands of dollars to get the knowledge to put in these books and you can purchase all this wonderful knowledge for just a few cents.

### ...and another tip

For this tip there will be a few pictures. Some of these pictures were taken from some old "Overhead Transparencies" that Tandy Leather company used to give to schools. It is about the tool that most people think is the hardest tool to master. I too, was in that group and because of that I became an expert at beveling.

I am referring to the swivel knife. The pictures that you see, I am sure that all of you have seen in one book or another. But let's look closely at these pictures. *First, picture #1, you see the parts of the swivel knife. Second, picture #2, you see how to hold the swivel knife.* Observe just how long the stem is (or how high the yoke is). I tell all my students to make their swivel knife as long as it will go. Try it. If too uncomfortable, make it a LITTLE smaller until it is ALMOST

## Tips-Tips-Tips

I am good at messing up my marble. When I am working, my only thoughts are: "What I Am Doing Now". It could be carving, skiving, dyeing, edging, whatever. I do most of it on my marble, ESPECIALLY CEMENTING. Cement picks up dirt, dye, waxes — you name it. So I lay my beautiful hard worked on project on my clean (?) marble and what happens? Everything that is on that marble is now on most of my project.

When I get a new marble, I clean it very good. I even sand it working down to an extremely fine sandpaper or even emery paper. Then I wax it. A fine coat of floor wax is better. If you have an electric buffer that is even better. On the bottom side I cement Hard Rubber (Poundo Board) using contact cement. I then trim to fit. This does several things. IT HELPS TO MAKE IT QUIET. Also, in a pinch you can use it to cut small projects or punch holes and it keeps it from sliding around on your bench.

Now I just finished a project for the fair. My marble was full of dye, cement, wax, and

## Puyallup Fair

- Take some time and stop by the **Puyallup Fair** and "*Do the Puyallup*" September 11th-27th. Find out when the leather demonstrations are and support them. See how easy it is to be a demonstrator and reap those benefits: **free tickets, free parking, and a chance to get others interested in leather craft.** Fair hours are 10 a.m. to 10 p.m. Sunday through Thursday, 10 a.m. to 11 p.m. Friday, 9 a.m. to 11 p.m. Saturday. Admission is \$7.50 for adults, \$4.50 for seniors and children 6 to 18, free for 5 and under. Call 253-841-5045 for details.

..... Puget Sound Leather Artisans Co-Op .....

# MACPHERSONS LEATHER

Phone: (206) 328-0855

519 - 12th Ave S.  
Seattle, WA 98144

*Offering a discount to the PSLAC members*

Terry Durban, Manager

COMFORTABLE. The longer the swivel knife, the easier it is to control. Because it is long, your index finger naturally presses on the swivel knife just a little harder. Also, once you are used to this NEW position, you will get less tired and less likely to make mistakes.

The sharp blade and proper casing, both make for good swivel knife cuts. (*see article on casing with Tanning Oil*). Then the sharp part. The absolute best tool (*My opinion*) to

sharpen a swivel knife blade is the FLAT CERAMIC HONE. It is a two part hone. Dark on one side and white on the other. The dark for shaping and the white for honing. These hones can usually be purchased in a craft store that sells GOOD wood carving knives. After that I use my Buffing wheel made from rounders. Then an ordinary business card with WHITE JEWELER'S ROUGE rubbed on it for the final hone.

For the Ceramic blade, I have found nothing better than the Buffing Wheel (rounders) and then the Business card. Even the Ceramic blade when just purchased needs a great deal of buffing (NOT SHAPING). And ALL blades need periodically buffing.

*Picture #3* is an exercise that I use no less than three times a week. If you have the time, do this exercise daily if you can. The top row shows the steps in the exercise. The bottom row will show you the variations that can come from this PRACTICE. I have even used several of these variations as the complete design on small projects.

**Picture 1  
THE SWIVEL KNIFE**



**Picture 2**

**HOW TO HOLD THE SWIVEL KNIFE**



**PRACTICE, PRACTICE, PRACTICE...**

**Bill Churchill,**  
Federal Way, WA

## Advertisement Space is Now Available

See our inset on this page for details. There is free help available to design, compose and produce the advertisement. Please contact the editor for details.

## Bits-and-Pieces

**To Puget Sound Leather Artisans Co-Op** — What a surprise to receive the beautiful basket with plants. So many saw and admired it. I began to think I had better keep an

eye on it so it wouldn't disappear. Thank you again for a great Group.

/s/ **Betty Cottrell**

**Terry Shinaberger** is doing great and she too thanks PSLAC and *All the Internet* for their best wishes and prayers. She expects to be at the September meeting.

**Don't forget the "Front Cover" contest. There is a \$50.00 swivel knife prize. Entries are due at the Oct Meeting.**

**Picture 3**



### **RawHide Gazette**

**Editor/Publisher:** Bob Stelmack  
**Co-Founder:** Bill Churchill  
**Co-Founder:** General Seymour  
**Treasurer/Secretary:** Linda Stockhausen

*Copyright 1998 PSLAC, Puget Sound Leather Artisans Co-Op*

The RawHide Gazette is published monthly (12 times a year). Address for information and correspondence: PSLAC, c/o Bill Churchill (ph. 253-839-3038) 1471 South 302nd, Federal Way, WA 98003 (*email: churchil@nwlinc.com*). The RawHide Gazette is provided to the Puget Sound Leather Artisans Co-Op as a part of their membership benefits. Annual dues are \$24.00 USD per year.

All submissions are subject to editing for clarity and length. All articles submitted must be accompanied by name and address of writer.

**POSTMASTER:** Send address changes to PSLAC, c/o Bill Churchill, 1471 South 302nd, Federal Way, WA 98003

### **Advertising Rates**

The RawHide Gazette now offers advertising space to interested parties. Ad spaces are as follows:

1/4 Page or Business Card ..... \$60 USD  
1.2 Page ..... \$110 USD  
1 Page ..... \$200 USD

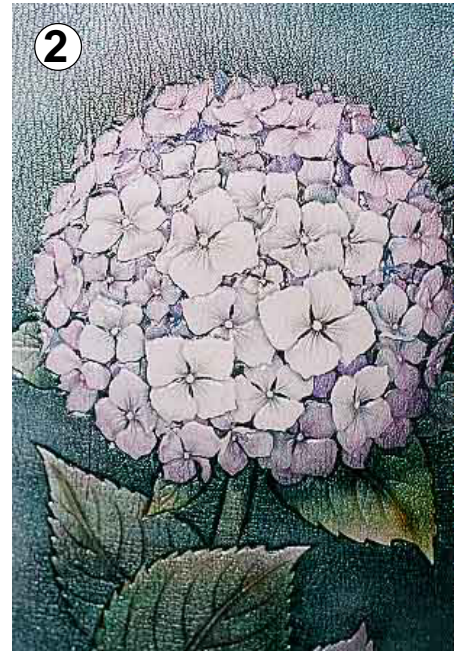
These rates cover a six month time period. Guild members are entitled to a 25% discount. Leather companies supporting PSLAC are given free Business Card size advertisement, additional space at regular rates.



week. We hoped to do it over the Labor Day weekend, but the contractor has been dragging his feet (what else is new?). /s/George Hurst

## Focus on Flowers

Many of the exhibits in the 12th Japanese International Leather Art Forum were flower subjects. I have included five pictures here to give some differing technique. **Figure (1)** represents just one of many three dimensional flower arrangements. This one was made by **Kayoko YamaShita** of Japan and was titled: "Forest Fantasy". Kayoko describes her work: "In the middle of Summer, the flowers are blooming gorgeously in a forest. That



General has Full Hide Hair on Brown and White Hide \$300 OBO (425) 562-9941

Bill: Thanks for your comment on our catalog. We expect to mail it to our list on Tuesday, September 8. Hope it works for us. It was quite expensive in terms of art-work, printing, mailing and cost of over 300 new items. We will also be moving to our new location next



scene reminds me of the large fire works exploding in the sky". The summer fire works here in Japan are referred to as: fire flowers.

The flower arrangements were beautiful and colorful, but they did have one drawback. They were completely colored and you could not tell if they were real, leather, silk, or plastic. The one exception was some rawhide roses that had that translucent rawhide without any coloring. Quite striking, but my picture did not turn out.

**Figure (2)** was one of two flower pictures that were done with a technique called wax-printed leather. This piece was done by Mutsuko Ohyama of Japan. She titled the art work: "Hydrangea" and said: "It's shining and very attractive in the rainy season. It ex-





## A Round of Rounders

**Dale Buckenberger** designed and produced the Web Site for **Bill Churchill**. One of the distinctive features is a background of rounders. Here are pictured those rounders that Dale used to make the background picture. If you get the chance, go to your local public library and ask someone to show you how the look at the following Internet location:

<http://www.nwlink.com/~churchil/>

Along with the unique use of rounders you will find almost 5 million bytes of information in the form of leather pictures that Bill Has done.

If you talk to Dale perhaps he can give you some pointers on building your own Web Site to display or advertise your own work. As Bill can tell you: "You get email from a round the world" and these rounders are just the symbol for the global reach of the Internet.



presses the color changing process of hydrangea with wax-printed leather". To date I have been unable to find any description of the wax printing process. The only effect I could see from the actual piece was a very soft, muted color of the leather. It appeared semi-translucent.

**Figure (3)** was a unique batik look to the entire project. **HSU Shu-Yi**, of Taiwan produced this piece titled: "Autumn Assemble". She said: "Crowed in groups, group gathering, and gathering in groups. Inside the solitary outlook, there is a joyful heart". The batik effect almost looked like a potters crazing on a vase or pot.

**Figure (4)** was more the traditional "realis-

tic" flower carving that Bill Churchill teaches. The carving was **Kazuhisa Mishima** of Japan. He titled his work: "Cattleya" and said: "It's gentle and gorgeous and a queen of the flower that has a strong self-assertion. I tried to express this work delicately and boldly".

The final **figure (5)** was of the "Cherry Blossom". **Michiko Matsuda** said: "In the dark knight, a light shone on a drooping branch of a cherry blossom,

and the pedals blew in the air. It's fascinating beauty and trasienty. I applied the color by thinking of this beauty". She used acrylic  
*(continued on page 7)*



**Leather Factory  
Spokane**  
 28 West Boone Ave, Spokane, WA 99201  
 Phone: (509) 328-9939  
 Toll Free: 1-800-822-8437  
 Fax: (509) 326-7019

*Offering a wholesale discount to the PSLAC members*  
<http://www.flash.net/~lfmidas2/index.html>

Kevin White, Manager 

# Undercutting

Everyone who does leather carving, at one time or another you want to undercut flower or leaves. The Maple leaf or the Oak leaves are good examples of this. Most of your leather outlets carry tools for undercutting — numbers B60 and B892 and then you have the “Pro-petal” These are good “PRODUCTION” tools. But they are like any “PRODUCTION” they leave a lot to be desired.

Several years ago I was watching a “National Geographic” and part of it was a short story on a saddle maker in Oregon. I taped this particular segment and I was watching it one day and I suddenly saw that when he was using his Undercut Beveler there was something out of the ordinary. I reran and reran and then I finally saw it. He had “MODIFIED” his undercut beveler. So out to the shop I go. I always have a piece of leather there for when I modify any tool. Well this didn’t take long. I brought it back in and dampened some leather (at least 6/7oz) and made a couple of swivel knife cuts and then tried my “NEW” tool. “BINGO”, not only

this tool did NOT leave any heel marks, it went deeper faster and so much cleaner.

So what works for the Undercut Beveler has to work for the ‘Pro-Petal’. And does it ever!

When I tell my students this, one always says, “I don’t get the marks from the heel when I use the Undercut beveler or the ‘Pro-Petal’”. They have had to work at it and even then not all can use the tools without leaving marks. Modifying the tools according to the pictures, anyone can get the professional look to their work.

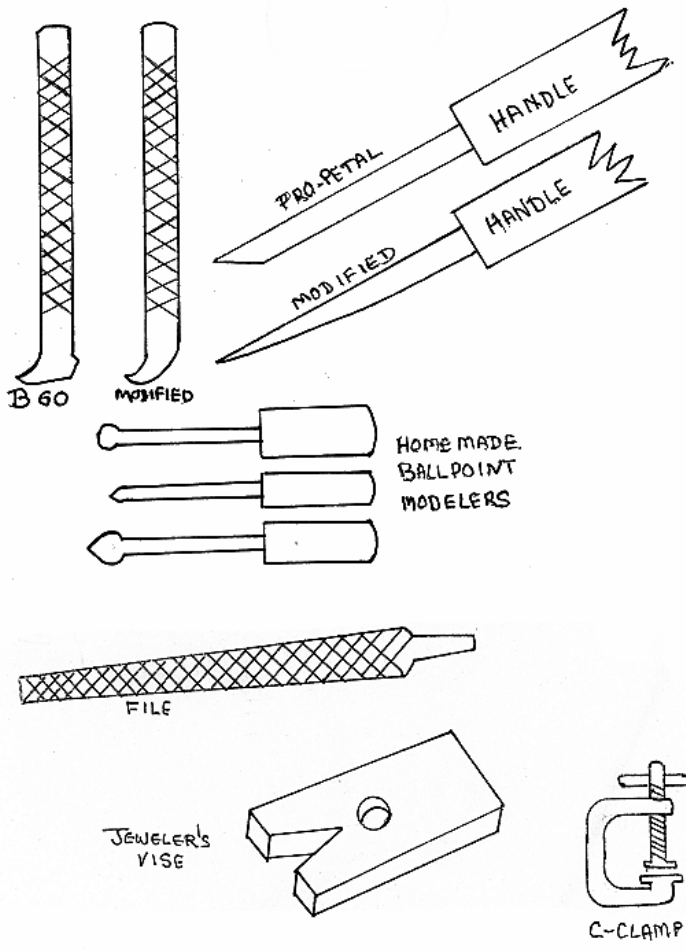
“Pro-Petal” used to come in two (way back, three or four) sizes. Now Osborne and Tandy are about the only company that carries them. Locally I believe that MacPherson’s also carries them. Yet for those that do ‘Small’ carvings a smaller “Pro-Petal” is needed. Following the same design used for modifying, you can easily make one from a nail and then put it into a wooden or X-Acto handle. As for a smaller undercut beveler, Leather Factory carries them in two sizes.

**WHEN YOU DO MODIFY OR MAKE A NEW ‘PRO-PETAL’ OR UNDERCUT BEVELER. WHEN YOU FINISH, IT HAS TO BE CLEAN AND SHARP.**

To modify either tool or to make a new one, refer to my article on making stamps in a previous Gazette. There you will see that the same principal is used as you will do here. Using a board as a vise, reshape your tools using a regular file. Do not use on an electric grinder as you tend to over heat the tool and

lose the temper. After you get the right shape, using emery paper and wet and dry smooth and polish the tools. As I said before — “SHARP”. For those of you that make a ‘Pro-Petal’ from a nail, any wooden handle will do as long as it is no larger than 3/4” in diameter.

Now that you are undercutting all of your carvings, you stretch the cavity and let dry. Also you will see different size ballpoint Modelers. You can purchase Modeler # 8033 and you will have two sizes of ballpoints. I have made about 15 more. Using the shapes you see here, you can make them for any size undercut that you need. (AGAIN: DO NOT MAKE ANY TOOL OR MODIFY ANY TOOL UNTIL YOU NEED THAT TOOL). The ball points can be made from common nails. The diameter of the ballpoint determines the size nail you want. BE SURE THE FINISHED TOOL IS WELL POLISHED AND SMOOTH.



**Bill Churchill**  
Federal Way WA



## TWLeather, Inc.

Toll Free:

1-800-477-9923

2017A White Settlement Rd.  
Fort Worth, TX 76107

(817) 877-5427, Fax (817) 877-5432  
Email: TWLeather@AOL.com

*Offering a wholesale discount to the PSLAC members*

Jim, Ken & Cal, Managers

colors with a "great deal" of white. Normally, too much white looks very hard and artificial -- this one did not.

Next month -- Animals!

**Bob & Karen Stelmack**  
Hamamatsu, Japan

## Uncle Bill's Corner

SEPTEMBER, I do believe that all the calendars are in a conspiracy against me. Turn the page, turn the page — the MONTH IS GONE!

The next meeting will be at Linda Stockhausen's house on the 27<sup>th</sup> of this month. It will have been a long time since we saw all the old faces. I for one am looking forward to this meeting.

I received the new catalog from **HIDE CRAFTERS PRODUCTIONS**. And I want to say that I have never seen a better Catalog. HideCrafters has merged with a Video Company and only promises to get **BIGGER AND BETTER**...He has six new Videos by **ROBB BARR** out now, and they can only be good. **TWL -- TEXAS WHOLESALE LEATHER** is growing too. They now have an E-Mail address..(see ad elsewhere).

Now to us. Fall is here. The fair was here. The turn out was good. (*Actually I am writing this before the fair but that shows you how much confidence I have in the people in the CO-OP*). I do know that we have some beautiful entries this year.

ONE THING MORE -- Bring your swivel knives to the meeting. I will have my Leather buffer there (Did you hear that Henry?). See you at the Meeting. There will be a short Demo on Swivel Knife and Beveler.

soon Portland assured me that they would TRY to start carrying it. I have found that Tanning Oil when mixed right is about the absolute best casing solution that is. It gives almost an instant perfect burnish. As a matter of fact you have to be careful or you will get to much burnish. I will explain later, in this article, how to get rid of or tone down your burnish after your carving is finished.

### *The mixture that I use is:*

*one (1) teaspoon Tanning Oil*

*one (1) cup water*

*one-eighth (1/8) Teaspoon*

*Liquid Glycerine (Glycerine can be bought easily at a Feed and/or Tack store).*

*You can also get it at Drug Stores.*

Now just Glycerine and Water is a good casing solution. I believe Tandy used to sell "Carve Ease" and I think that it was a mixture of Glycerine and Water. Tanning Oil helps to keep the carving damper longer. IT WILL NOT RETARD THE USE OF DYES AND ANTIQUES LATER. I first put Water (using a sponge and very warm NOT HOT water) and completely change the color of the Leather. Then I completely mix the Tanning Oil solution and then either Brush or use a sponge to put a GOOD coat on. I then put the carving in a zip-lock bag. Zip-lock bags come in pints, quarts, half gallons, and gallon sizes. You can always find a larger plastic bag if necessary and then tape it shut so no air gets in or out.

My wife is not too happy about the next step. I put it in the Fridge. Deb Laudadio taught

I received a nice E-mail from one of our new Internet members. Among other things, he asked again about the TANNING OIL solutions. **Tandy** does carry the Tanning Oil, but you might have to bug the manager a little to stock it. **Leather Factory** in Spokane and

me that if you wrap your carving in a towel, when you put that dish of leftovers in the Fridge, the leather will not get scratched or marked with the leftovers. The very warm water applied to the carving steams up the inside of bag and cases it deeper.

**Tony Ezettie**, in one of his Demonstrations showed us how to "SLICK" the leather. When Tony showed us this and asked me to use a Swivel knife on the SLICKED leather. I honestly could not believe it. It was like cutting butter (AND TONY ONLY USED WATER!) See *drawing of a SLICKER*. Tony says that you can make these out of HARD wood, plastic, or anything that is hard and can be shaped and smoothed (**Dave Wallen** makes and sells a Slicker -- contact Bill Churchill <churchil@nwlinc.com> for details). Slick the leather before putting into



SLICKER

the Fridge. You lay the leather on your marble and using brisk and heavy back and forth motions, RUB THE MOISTURE INTO THE LEATHER.

I leave the leather in the Fridge at least an hour (It is better the longer it stays in the bag) and then take it out of the Bag and let it turn back to its normal color. Your leather is now ready to work.

Another thing that I do with all my leather



Toll Free Order Lines  
Tel: 1-(888) 263-5277  
Fax: 1-(888) 263-5086

## Hide Crafter Productions

*Offering a 25% discount (10% on leather) to the PSLAC members*

2017 B White Settlement Road  
Ft. Worth, TX 76107

email: hcrafter@flash.net  
George Hurst, Manager

**tandy**  
**LEATHER &  
CRAFT SUPPLIES**

**Seattle**

Phone: (206) 542-1677

Fax: (206) 546-0979

20003 - Aurora Ave N.  
Seattle, WA 98133

*Offering a wholesale discount to the PSLAC members*

<http://www.tandy-leather.com/index.htm>

that I wish to carve is to tape the back with MASKING TAPE and then cement this to (At least) 1/16" (best is 1/8") poster board. This can be purchased at your local Art store or Office Supply store. Use either permanent or semi-permanent cement. This way there is absolutely NO stretch and even with 3-4 ounce leather you can carve a much greater depth. When through with your carving (I would suggest that you do all of the dyeing and especially the antique finish before you remove the tape and poster board). Remove the tape and poster board. To remove the "Backing" from the carving: Lay the carving face (the side your carving is on) side down on your marble and pull the poster board and tape off. If you pull the leather away from the tape and poster board you will create wrinkles in the leather. When you pull off the Masking tape from the flesh side of the project there are two things that work for you: One, is that you have a better "Gluing" surface (If a billfold and you are going to cement a lining on) and, two, if it is a belt or similar there is no cement on the flesh side of the leather to try to remove.

If it is a picture that you are going to frame and hang, you can permanently cement the poster board directly to the flesh side and leave it on when framing. Or you can again use the tape and cement it to the poster board and when the tape is removed you can cement the carving to Plywood. (I prefer to use the back-side of paneling or masonite). Then frame the carving. If you leave the carving cemented to the Poster board there are two disadvantages. If you drop it and the corner gets bent or if you used "COLD ROLLED" poster board, it is layered and the layers can start separating.

The backing of the carving has so many advantages that it is almost a hard fast rule to use these methods.

HINT: Do not try to use the same piece of poster board twice. You can see when you remove the poster board from the carving

your carving and you have to much burnish or even when you have a BLACK spot where the metal has interacted with the leather, you can remove it by going over lightly with a brush (Dauber carries to much) with Oxalic Acid. This will take the burnish out. It will also leave your leather with a warm glow. You may want to go over the entire carving with ONE COAT OF THE ACID. It is an acid and repeated applications WILL BURN THE LEATHER. Wash the brush in warm water and soap afterwards. It is available at your local wood store and also at the local drug store. You may be able to get smaller amounts at the drug store. Mix one teaspoon to one pint of water. It dissolves clear. **Mark the jar: OXALIC ACID — POISON! Stir before each use. Use rubber gloves, eye protect, long sleeve shirts, adequate ventilation, wash all surfaces after use. Oxalic acid is very dangerous and can be absorbed through the skin. It can accumulate in the body and cause liver damage.**

ANOTHER HINT: This has nothing to do with casing of leather. Almost all of you have noticed that Felt tip daubers are not at your local leather store very often. I was watching **Fred Nachbar** teaching Coloring class one day and he showed his students a trick from **Peter Main** that I had never thought of. He took a wool dauber and held a lighter to it. He burned the excess wool off of the dauber and then when used (Say to dye the edge of a belt) the dauber does not OVERLAP OR

how deep you have carved. This also makes it bad to use the same board twice.

To get rid of BURNISH (Whether you intend to or not) use OXALIC ACID which is sometimes called leather bleach.

After you finish

HOLD EXCESS DYE. It is a very good idea, but since the WOOL dauber is made of animal hair, I would suggest doing it outside. It does have an odor.

Do not use oxalic acid and antiques together. It can effect the coloring of your leather!

**Bill Churchill**  
Federal Way, WA

## My Fair Entry in Absentia

Here is my Fair Entry. Too late to send, but I did one anyway:

The "creature" is a design from **Roger Dean**. He does many science fiction type drawings.



**Fred** I find the work very detailed and I am trying to get more detail in my work.

**tandy**  
**LEATHER &  
CRAFT SUPPLIES**

**Tacoma**

Phone: (253) 474-1677

Fax: (253) 474-1777

5429 - S. Tacoma Way  
PO Box 9246  
Tacoma, WA 98409

*Offering a wholesale discount to the PSLAC members*

<http://www.tandy-leather.com/index.htm>



**tandy**  
LEATHER &  
CRAFT SUPPLIES

**Burien**  
Phone: (206) 244-0351  
Fax: (206) 241-5413

14611 - 1st Ave. S.  
Seattle, WA 98168

*Offering a wholesale discount to the PSLAC members*

<http://www.tandy-leather.com/index.htm>

The article is a "A4" sized portfolio I use at work. It was designed to hold two slip-in paper pads. One is a lined pad for work the



other is a fine quality drawing pad. The "crea-



ture' is tooled over a cut out disk that raises the whole carving. The background color is **Tandy's Antique Tan**. The colors on the "creature" are **Tombo Brush Pens** and **Prismacolor Art Brushes** (with some very faint white highlights). Sections have a "hint" of the metallic colors (scales, wings, belly) applied with **Tandy's Super Sheene**. The wings and several body sections are heavily undercut with paper mache' inserts. The finish is **Fiebing's Leather Balm with Atom Wax, color neu-**

tral. The edges are burnished, but not beveled. The technical part that makes it work well is the center section. I used three separate pieces to form the inside. The two larger ones form the pockets. The thin center piece is glued only from

top to bottom but not edge to edge. That free play at the edges give a better rounded natural look from the outside with no "lines" where constant opening and closing would start to show. The edge burnishing was a mixture of **Fiebing's Leather Balm with Atom Wax, color neutral, Tandy's Antique Tan** and *Spit* then rubbed the edge with a terry cloth towel. It has the best edge I've ever done.

I wanted to give the creature a strange hypnotic look so I got one of Karen's white glass beads and glued it in with **PVA**. It got a lot of comments at work and

when they found that I made it, the same question is always asked: "How long did it take you to make it"? My answer is always the same -- *a couple of days of work and many months of thinking about doing it.*

**Bob Stelmack**  
Hamamatsu, Japan

## Jana Safe(?) in Texas

Hi all, Just a note to let all concerned know that I made it to Texas in one piece. **Jan** and **Andy** are letting me send e-mail on their system until I find a place and can get set up. So you are welcome to respond here until further notice. The flight went well until we tried to leave Phoenix and got stuck on the tarmac for an hour without the air condition-



ing on. (*Did I mention it was 112F outside?*) I was rather soggy before take-off. I start the new job tomorrow (8-31-98) and I'm rather excited and nervous. Take care and I will be talking to all of you soon.

**Jana**

## Hide Crafter Press Release

**Hide Crafter Productions** of Fort Worth is proud to announce they are moving to a new, much larger location on September 1, 1999. The new location is in the same building as the **Texas Wholesale Leather Company**. This will provide leathercrafters of all skill levels with a place to shop either by mail or in person, at a facility with a very complete line of top quality merchandise at affordable prices. The address is as follows:

**Hide Crafter Leathercraft**  
2017B White Settlement Road  
Fort Worth, TX 76107  
Toll Free Ordering Lines  
Tel: 1-888-263-5277  
Fax: 1-888-263-5096

**George Hurst**, President has also announced the formation of a new corporation that will include another company as well. The new organization will be **Hide Crafter Productions, Inc.** and will include **Hide Crafter Leathercraft** and **Broadnet Communications**, a video production company,

The addition of **Broadnet Communications** will give the company the ability to produce broadcast quality video programs for the company and for outside customers as well. Formerly known as **The Eyes of Texas Video Productions**, the company has extensive experience producing video for customers worldwide and for the television broadcast industry.

**Hide Crafter Leathercraft** will publish their new, 40 page, leathercraft catalog early in

September. This new catalog contains over 300 new items for leathercrafters, including many new stamping tools. Persons on their mailing list will receive a copy automatically. For those not on the mailing list, simply call the number listed to receive a copy.

**George Hurst**



## Even Managers Tool!

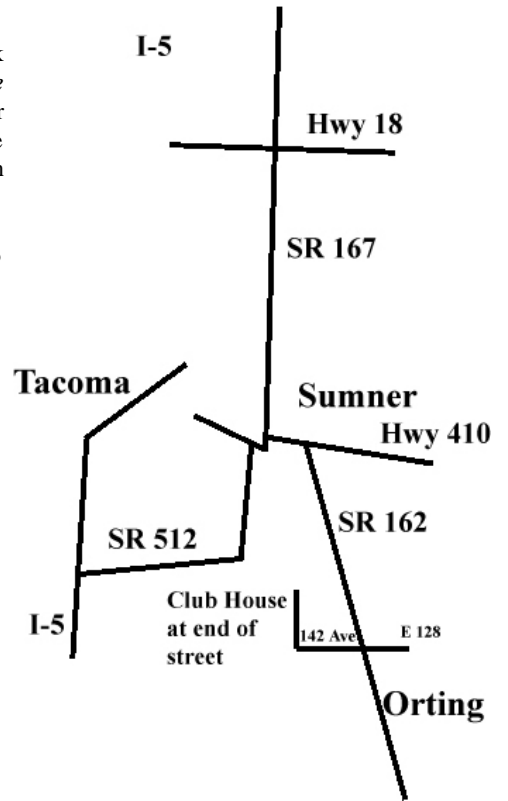
I wanted to show you a piece of leatherwork I recently completed. (*Yes, I still tool a little leather*). It's a daily planner that I made for myself. It has a 6-ring binder in the middle that holds all the stuff in place plus pockets in front and back.

How about putting my email address next to our regular address in your newsletter? I've included a copy of our next ad, and you can see we're trying to emphasize e-mail.

**Jim from TWLeather**

The next meeting will be in  
**September**  
 Mark your calendar!  
**Sunday, September 27th,**  
**2:00-4:00pm**

## Map to Linda's House Seattle



### PSLAC

c/o General Seymour  
 17915 212th Ave. E.  
 Orting, WA 98360-9622

