

# RawHide Gazette

Copyright © 1999 by PSLAC, All Rights Reserved

"Without question, the *RawHide Gazette* is by far the best and most informative and comprehensive Guild publications of all of them! You are to be commended for your very fine and professional efforts. Keep up the good work. With admiration"  
/signed/

Al & Ann Stohlman, December 1997

Volume 5, Issue 10

Puget Sound Leather Artisans Co-Op

December 1999

## Hide Highlights

- Possible Interruption of RawHide Gazette Service
- FREE Beveling Seminar
- PSLAC's Last Meeting of the Century
- Changes in the Leather Industry
- October Meeting
- Craftsman or Artist?
- LC&SJ Price Changes
- Christmas Gift Projects
  - Day Planner
  - Pencil Case
  - Coin Purse
- From the Email Bag -- Paint and Dye Resisting
- Dusty's Leather Santa Ear Rings
- Ken's Knothole
- Note from Dusty
- PowWow

### Meeting Announcement

Mark your calendar!

**NO  
MEETING  
this MONTH**

## Possible Interruption of RawHide Gazette Service

Here we go again -- the editor of the *RawHide Gazette* is relocating in January 2000 from Japan to England. Seems like this just happened from Seattle to Japan, but it was almost two years ago. This move will make the access to the computer and the Internet connections difficult while in transit, so the January and possibly the February 2000 issues may be a little late...or maybe I can blame it on the Y2K bug. Please be patient -- we are constantly improving with your help.

Cheers,

**Bob Stelmack,**  
Editor, RawHide Gazette

## FREE Beveling Seminar

There will be a Beveling Seminar at the **January Meeting** with **Bill Churchill**. Those who wish to participate please bring the following:

Leather (at least 8"X8") preferably 6 to 9 ounce. Please have leather cemented to Poster Board (A back of a tablet will do)

**Tools:** Swivel Knife, Mallet, Your Favorite Beveler (for those of you that have



these bevelers: 890, 891, 895, 935, 936).

## PSLAC's Last Meeting of the Century

The last meeting of this century. It is hard to believe that the next meeting will be in the year 2000. It is also hard to believe just how far PSLAC has come. Around five years ago, when we thought about starting a 'Leather Club', we had no idea that it would develop into the organization that it has. This 'Leather Club' is the best and the largest. PSLAC does more for others to learn all about leathercraft than all the Guilds. It has a beautiful Program for Children. PSLAC has also created 'Buying Power' for it's

members. PSLAC has been instrumental in having the entries in leather at the **Puyallup Fair** increase from 3 to over 100. We have started and involved more people to Demonstrate Leathercraft at the Fair.

PSLAC is not only local, it is on the Internet. PSLAC is International. PSLAC is also growing with new Members each and every month. We have people from all walks of life — people who are proud to be a member of PSLAC.

World respected Publication. No, we could not have done all of this by ourselves.

Now another Century is around the corner. We have NEW people now that are directing the course of PSLAC. Both of us have full confidence in these three people to take PSLAC even further than we now hope to dream — **Bob Stelmack, Ken Eriksen and Chuck Carlson**. If all of you give them the cooperation that you have given us, PSLAC will continue to

Founders of PSLAC

## Changes in the Leather Industry

Here's some exciting news. **Jim Linnell** is the Executive Vice-President of **Hide Crafter Leathercraft**. He will be working with **George Hurst** and **Andy Stasiak** to help make Hide Crafter a major player in the leathercraft industry. Jim decided to leave **TWL** because he believed that he could make better use of his abilities at Hide Crafters.

This means that any email you want to send to Jim needs to be sent to Jim Lindell at: [JoshuaJimL@Aol.com](mailto:JoshuaJimL@Aol.com)

## October Meeting

Well we had a nice meeting small group of people and I feel sorry for the ones that didn't come to the meeting because they miss a real informative meeting.

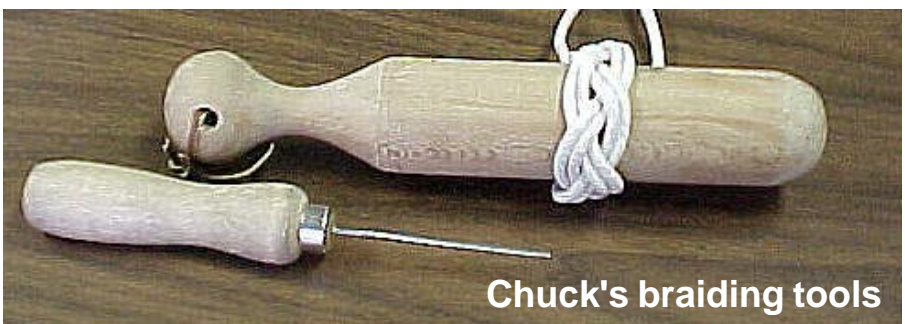
**Terry Bruce** brought gun wear (see pictures) that he made and was asked to explain how he made them. That was very interesting.

**Roy Reno** had a nice checkbook that is going to be a Christmas gift for his daughter and told us that it was the first



**Chuck's turks head demo with Len**

We have had help and what help it was. All of our Charter Members helped us through the bad times as well as the good times. To mention just a few: **Andy and Jan Stasiak, Sister Rachael, Noel DeWitte, Hans Heyn, Fred Nachbar, Linda Stockhausen, Dusty Wert and Chuck Carlson** (We didn't even have a typewriter for the Minutes of the meeting and Chuck wrote them longhand). Afterwards Andy Stasiak bought a computer and our Newsletter started looking like a Newsletter. Then we were blessed when **Bob Stelmack** joined and he has brought the *Rawhide Gazette* to be a



**Chuck's braiding tools**

grow and help all the future Generations to keep Leathercraft alive and well.

We Thank All Of You.

**General Seymour and Bill Churchill**

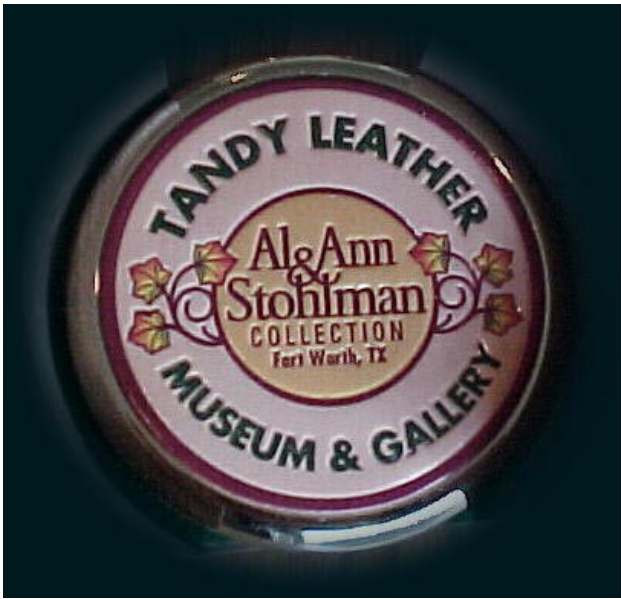
project that he laced. He didn't have Tandy Leather to ask how to lace so he thanked the **Stohlmans'** for the "*How to Lace*" book. He did a nice job for his first try.

**November PSLAC Meeting Pictures, courtesy of Dusty Wert**



**Terry Bruce and his  
holster, gun belt and  
canteen**





Stohlman collector coaster set ready for the next meeting raffle



Woody's barbed wire hatband and belt



Woody's knife holder (below)



Roy Reno's checkbook and leather calligraphy (above)

**November Meeting  
Sharing**

Vern's wooden box with carved leather inlays (below)

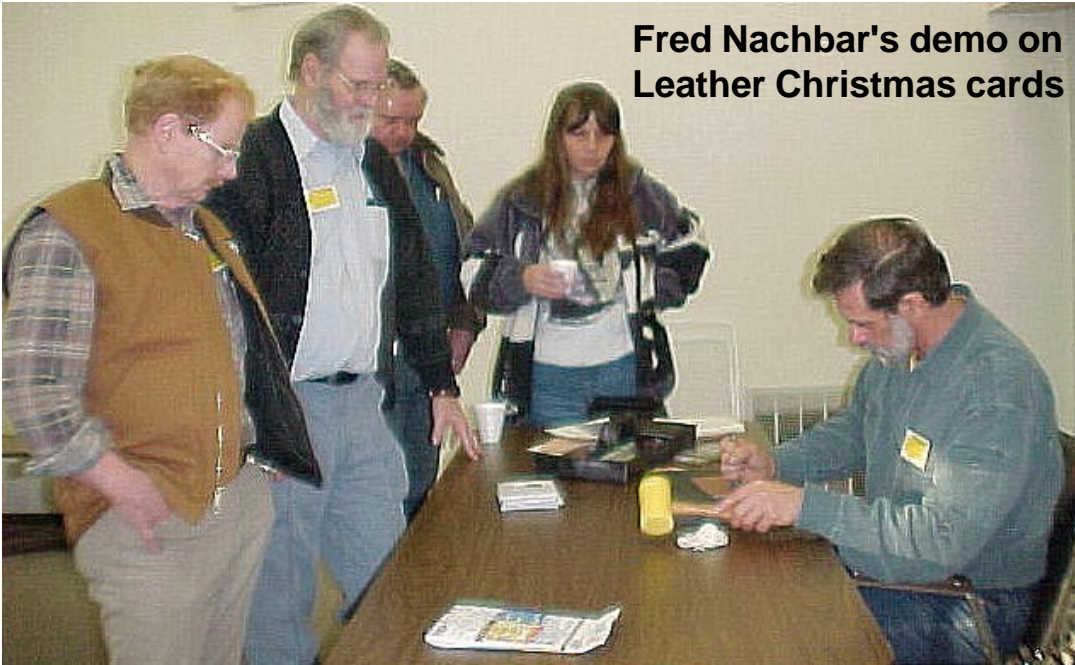


Woody brought a kitchen knife holder that he dressed up with tooled leather. He used decorative tacks to attach the leather. Looked nice and something that everybody could use. I don't know if it is going

out conscious.

I don't mind using someone else's patterns, and I'm flattered if someone wants to use mine. Now before some of you get

*the same locations, etc.)* then that is a copyright violation. If the same artist, using the same photograph as inspiration, then adds their own elements, perhaps from other photos, then it is an original work that was inspired by the photos, perhaps even copying elements of them, but not a copyright violation. There are court cases to back this up, this is NOT my opinion. The difference becomes the amount of "sameness" in the two images. Each case is decided individually.



**Fred Nachbar's demo on Leather Christmas cards**

to be a Christmas gift or not, but it is a nice gift idea.

We are going to have a raffle and the Coaster set of four that I took pictures of are going to be raffled. They are solid brass with leather inset, from the **Stohlman Museum** that was closed earlier this year. Those coasters are going to be a great treasure for someone. **Will it be you?** Come to the meeting and see.

Dusty

## Craftsman or Artist?

*(ed. note: There has been much email discussions on copyright, designs, abilities, and terminology. This is one of those articles intended to make you think about the items you create.)*

This is going to be one of those eternal debates. I doubt we will ever find a hard and fast answer that will satisfy everyone. In the end, we all have to live with

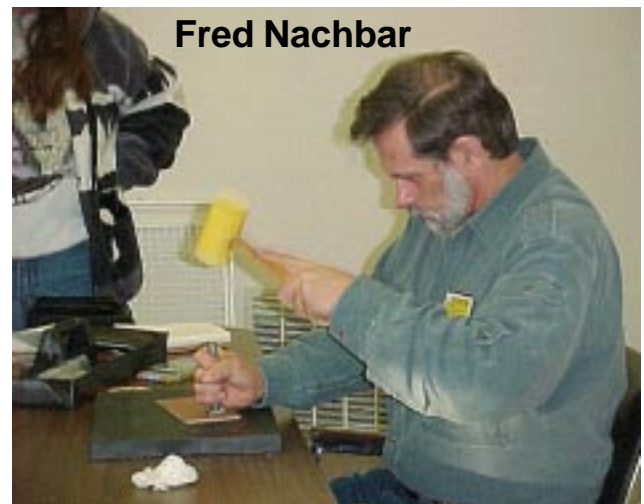
your steam up let me finish! I consider myself an artist. Why? Because I will add my own technique and interpretation in anything I do, original or otherwise. I will never intentionally create an exact copy of another person's design. Yes, it is a valuable learning tool to do so, but once you learn the techniques, most people will begin to experiment with them. That leads to originality.

The whole copyright thing is a legal mud bog. I did quite a bit of research on copyrights as they pertain to photographs, since I also do photography, and that field has had almost 150 years to get sorted out. Here is what I have found:

If a painter uses a photo to create an exact representation of a photo (*not a photo realistic painting, but one that has the same objects in*

So what does that mean to us as leather artists, craftsmen, workers? (Not gonna get into THAT debate again!) If you use a craftaid, which was designed and sold for that purpose, there is no copyright violation. Same for a pattern in a book. You can even sell the items made with that pattern, although if you were to go into mass production with it, that is a bit different. It all depends on the copyright notice in or on the source of the pattern.

How about using a photo to get elements for a project? You can trace individual elements, such as a mule from this pic, a



**Fred Nachbar**

wagon from that one, a cowboy and cow from another, etc. then put them all together, maybe with some trees from Pictorial Carving Finesse, and a bear from a craftaid or doodle page. Now sketch in some mountains, ground texture, etc. is that an original? Yes. Is it a copyright infringing piece? Depends on who you ask. Frankly, a lawyer will tell you what you want to hear. If you are the offended artist who's work was "copied" then you'll hear that you have every right to be upset and we'll sue the bast\*\*ds for everything they have. If you are the

duction or selling of pattern for profit, output. If you are not making money off it, not selling it, or are creating a gift, you are safe. The copyright laws only apply when there is commercial intent. If you don't believe me read the FBI warning on a rental video. Do you think the studios would allow you to rent it if they could force you to buy it? Same for music. See the recent broohaha over MP3 files and digital audio tape for more examples.

In all cases, if the pattern is for your use

the overall layout, background, and design was my own.

That's my take on it.

**Dave T.**

<moongazer@nidlink.com>

—Remember, opinions are like a\$\$holes. Everybody has at least one of them and they are likely to offend folks when they are openly displayed.

## LC&SJ Price Changes

The Journal's prices will go up effective 01/01/2000. Please note the changes:

USA: 1 yr - \$26, 2 yr - \$52, 3 yr - \$78  
 First Class: 1 yr - \$36, 2 yr - \$72, 3 yr - \$108  
 Canada/Mexico Surface Mail: 1 yr - \$30, 2 yr - \$60, 3 yr - \$90  
 Canada/Mexico Air Mail: N/A  
 Foreign Surface Mail: 1 yr - \$36, 2 yr - \$72, 3 yr - \$108  
 Foreign Airmail: 1 yr - \$56, 2 yr - \$112, 3 yr - \$168

### Cover Price

USA - \$5.95  
 Canada/Mexico - \$8.00

**Back Issues:** 10% discount on orders or 10 or more.

US - \$7.00  
 First Class - N/A  
 Canada/Mexico Surface Mail - \$8.00  
 Canada/Mexico Airmail - \$9.00  
 Foreign Surface Mail - \$9.50  
 Foreign Airmail - \$12.00

### Copies of Articles in Sold Out Issues:

No discounts offered on photocopies

US - \$4.00  
 First Class - N/A  
 Can/Mex Surface - \$4.50  
 Can/Mex Air - N/A  
 Foreign Surface - \$5.50  
 Foreign Air - N/A

### Wholesale:

\$3.00 per copy (US Dollars), (all



artist who "copied" the items then you'll hear that your's is a derivative work and bears little resemblance to the original and we'll fight it in court because they haven't got a leg to stand on.

Personally I lean to the derivative work in this example. If you had taken Ron Ross' checkbook pattern, changed a couple leaves, maybe tweaked the flowers, then published it as an original, I'd say you were on the borderline. Rotate a flower or change one leaf in a pattern, or maybe change the fish jumping upstream from downstream and you're asking for trouble. Note that in all cases I am assuming a commercial, i.e. mass pro-

only, don't worry about it. The courts have always decided in favor of the person making the object for personal use. If you own the original pattern, craftaid, book, or photo in a magazine or if the image is displayed in a public forum, i.e. the web, then it is available for personal enjoyment. If you don't believe me look at the court cases. Don't ask your lawyer. (See my comment on that above.)

Am I going to continue drawing my own patterns? You bet! Why? Because it is very satisfying to create something totally original. Do I concern myself with snitching elements from several sources as I recently did for a belt? Nope, because



## Christmas Gift Projects

As always, I try to make my Christmas gifts and this year was no exception. Here are some projects made for family, friends and myself.

### *Day Planner*

This project started out as a picture I took of the Mini-DayTimer I saw at a relatives house while we were in Seattle on home leave. I took a couple pictures with my digital camera and traced the DayTimer insert.

I then took the tracing of the insert and made a copy of a rigid plastic for a model and to check and see of the finished day planner would fit the DayTimer inserts.

The pattern of the angel fish came from a coloring book I picked up in Hawaii, but I had to scan, stretch, and resize to make it look right for the day planner.

Now I took the cut piece of leather to the local leather shop and had Miaji-san's wife use an electric skiver to skive the

countries) plus shipping (in USA - US Mail or UPS; other countries - Surface Mail, Airmail or Federal Express). Minimum order is 4 issues. Wholesale agreement needs to be signed & on file.

All funds are to be paid in US dollars.

**Cori & Randy Schrader**  
<4themakr@bright.net>



entire outside edges to fold over the inside construction to give it a nice finished look.

I have tried to "hand" skive large pieces of leather, in the past, but the results were always less than the effort I put into it and often I slipped and had to start over on a new piece.

The scanned and altered angel fish pattern was printed out on a tracing paper on my ink jet printer and traced to the cased leather. Since the leather was quite thin, I used the swivel knife sparingly and mostly used the modeling spoon to form the fish.

I used an acrylic metallic, pearl color for the white on the fish with just plain old black for the stripes. Both colors were thinned with an acrylic extender to retain the color, but dilute the color without removing the strength of the acrylic bonding. This should make the coloring last longer. I applied a clear gloss acrylic to give that "fishy" look to the finished product. Then the entire piece was colored with a "unknown" Japanese dye. Looks and smells like the Fiebling paste dyes.

I then assembled the interior pieces and started to hand sew the edges. I got tired and frustrated and needed to get the project in the mail for Christmas -- so it was back to the leather store where I removed my hand stitching and had Miaji-san machine sew the edges.

This is where Miaji-san showed me a trick in sewing and construction in general. He had several rolls of very narrow double backed tape that he used, in this case, to adhere the pen holder to the day planner. I bought a couple of different sizes and will try with my next project.

This turned out great and I sure do miss my Tippmann "Boss" Sewing machine



that is in Boeing storage right now. I did enter the Lone Star Leathercrafters raffle to try to win one that I could get shipped to me, but I have to wait until the middle of December before the raffle is drawn. If I don't win -- I am going to look into getting an electric sewing machine for



my projects. Maybe I'll wait until one on the leather sewing machine companies start to sponsor PSLAC and I'll get one from them.

The project is finished and in the mail. I just hope the recipient doesn't read this issue of the RawHide Ga-

zette.

## Coin Purse

A simple, but nice gift. The "guts" came from the leather shop. It is complete, and functional. The insides are already sewn and the zipper is installed. The crafting is in the covering that is sewn or laced to the outside.

I have made several -- including one for myself. I chose some exotic leathers for durability and looks. I used two types of shark skin and one "soft" tanned python snake skin. These projects just cry out for tooling and lacing.



## Pencil Case

Again, another partially finished project, much like the coin purse. This is where







I have **thinned with pure neatsfoot oil**. I apply with a piece of sheep wool scrap, wiping on a heavy coat, which I then let set for several minutes, then, I take more of the wool scrap and wipe off the antique. The lacquered area will at that time have taken on a golden sort of color and your background will be stained the color of the antique. I then let the antique

## Quick Christmas Gifts



I carry my pens, mechanical pencil, marker, highlighter, ruler and eraser for work.

Mine is sharkskin to match my key case, day planner, wallet, and coin purse. All out of the same shark skin -- come to think of it it must have been a large shark to make all those items!

## From the Email Bag -- Paint and Dye Resisting

Being of the old, old school of thought, I have always used a lacquer based coating, such as Fiebings Saddle Lac or Neat Lac to coat the carved area, with a minimum of two coats, to insure full coverage. Then, I apply Fiebings Antique, the paste type, of the preferred color, which



finish drying after which I buff it with sheep wool scrap to remove any residue. When all of this has been done, and I am sure all is dry, I then give it a light coat of Fiebings TanKote. TanKote will not interact with the lacquer.

**Ron Ross**  
rosaddlery@mail.fwi.com

*...and...*

Now here is something I have found lately that works better than neat-lac or any other thing. It can be found in the art supply stores, Michael's, etc. It is called Winsor & Newton -- colourless art masking fluid. It **MUST** be the colourless, I have experimented and the other ones darken the leather too much. Try it on a piece of scrap and I bet you will find that even the Black dye will **NOT** bleed through.



Mary Terry  
[maryt@duffy.com](mailto:maryt@duffy.com)



## Dusty's Leather Santa Ear Rings

You will need 4 stars for each pair of earrings, 1 pair of earring post, Cova Color in red, black and white. Of course a fine paint brush.



To make leather Santa earrings all I did was stamped thin tooling leather with Z-785 extra hard and then finish cutting them out with super shears. Paint the back all red. Paint the front red however leave a 3/16" square for the face. Paint the 4 tips black and one tip white for the top of the hat, black eyes, red lips and white beard and mustache.

Put a small hole in the middle of the back star. Put the post thru with leather weld and then put a thin coat of leather weld on the inside of the star and then put the front star flesh side to flesh side. Make sure that the tips are lined up correctly and then hold tight till it is set and then

lay them down to let dry.

I also made a tie tack the same way.

They are easy to make and kinda fun to do and are a hit.

**Dusty Wert**

## Correction

The last issue of the RawHide Gazette incorrectly referred to the title of Stohl-

man Museum. It is the "Ann and Al Stohlman Museum".

## Ken's Knothole

Well, this is the last Gazette for 1999 and for this millennium. The **Puget Sound Leather Artisan's Coop** has come a long way in the past 5 or so years. We've grown from a small group to about 300 members. Thanks to the efforts of our intrepid editor & webmaster, **Bob Stelmack**, we have a world class newsletter that just keeps getting better every month



and a world wide presence through the Internet. We have a new meeting place that seems ideally suited to our needs, with enough room to spread out, display all of our leather projects and extra rooms for multiple demonstrations/seminars and socializing. We have a pretty strong beginning to the goal to get more kids into leather work so we can pass on the huge wealth of knowledge our group has in it's members. And I continue to see some pretty incredible looking leather projects from our members. It will be interesting to see what the 1<sup>st</sup> five years of the new millennium will bring for PSLAC.

One of things in 2000, that will be here before we know it is the **Leather Trade show in Sheridan, WY** (late May). We've talked about this at meetings and in the last Gazette and about the museum that is to be dedicated to the Stohlman's during this show. Ann Stohlman asked us to clarify for folks that it was Al's wish that it be the **Al and Ann Stohlman museum**. I know that a number of us are making plans to be there for this event. Stay tuned for more info.

**Chuck Carlson** heard back from **Peter Main**, about the possibility of a class when he's over here early in the new year. He's not going to be able to get to Seattle then, but will be here for the IILG Leather Cruise in June and will try to work up a class for us then.

**November Meeting:** We held the meet-

ing a week early due to Thanksgiving and the turn out was a little lighter than usual, though we still had 18 members attend. **Linda** provided us with some smoked trout and **Fred and May** brought chocolate. Fred put on a seminar on his leather Christmas cards, while Chuck was giving instructions on Turk's Head knots in another room. We took up a collection for goodies for **Larry Rikema**. He's doing better, but not "out of the woods" yet and still needs our good wishes. We now have 10 basic stamping sets for our work with the kids. **Bill** made us some wooden racks for them. Also, we have 10 of the heavy weight handles for use with the 3D stamps, donated by **Andy Stasiak**. We had some raffle items, including a set of collectable coasters that are now out of production, that Chuck picked up at the Pendleton Show. The group decided to hold off on them until we get the full meeting, either January or February. **Roy** collected some leather items made by members for the **Veteran's Home Residents**, for Christmas gifts and collected some more at our breakfast get together on the 2<sup>nd</sup> Saturday of the month (Homestead Restaurant, Tacoma, 8:30am). We seem to be getting almost as many people there, for socializing and good eats, as at our monthly meetings.

**Ken Eriksen**

## Note from Dusty

If anything goes wrong with the mailing of the **RawHide Gazette**, don't blame Ken — blame me. I took over the mailing because Ken had so much to do, so I volunteered to do the mailing.

He sent me the list of all the people that

get the **RawHide Gazette** in the US Postal Mail. I noticed that there were a lot of people who have a computer with the notation "Net" on the list. To save the Co-op some money, we could ask them to download the **RawHide Gazette** from the Internet and not send the **RawHide Gazette** to them in the US Postal Mail.

If you are one of the members that can download the **RawHide Gazette** from the Internet, would you please e-mail me and tell me to take you off the US Postal mailing list. My e-mail address is <dustytoy@gateway.net>. We will have **Bob Stelmack** notify you via e-mail when you can download the newest RawHide Gazette or Special Members Only Issue. Downloading the **RawHide Gazette** has an added advantage — it's in COLOR.

Take care  
**Dusty Wert**

## Leaving Japan

Since I am leaving Japan I thought I would throw in some favorite pictures that I took in Japan.

**Bob Stelmack**  
Hamamatsu, Japan

## PowWow

PK will be supporting a **Cub Scout PowWow** in the near future. The exact information will not be available until a meeting is held on the 11th of January. **PK** says: *"If someone wants to come down and work with me that's terrific, but not necessary. What I'll want for sure is a list of places that people can buy materials and I'll want to take some PSLAC brochures and maybe we can throw together a brochure for the pack program we are going to put together. What I need to teach them is how to work with cubbies on the leather working requirements for some of the cubbie activity pins, and I'll have to look that up. More info as I have it."*

To contact PK to help just phone (206) 838-9134 or e-mail at: "PK Dan" <kc7vco@hotmail.com>



A new Logo design for  
**PSLAC** by Dale  
 Buckenburger



## PSLAC Membership Application

If you know someone who is interested in leathercraft — give them this information:  
**Puget Sound Leather Artisan Co-Op MEMBERSHIP APPLICATION**

**YOUR NAME:** \_\_\_\_\_

**STREET ADDRESS:** \_\_\_\_\_

**CITY, STATE, ZIP:** \_\_\_\_\_

**PHONE NUMBER:** (\_\_\_\_) - \_\_\_\_\_

We publish a membership list with our members expertise listed. This list is used to refer possible clients to the best person for the job. Tell a little about yourself, how you got started in leather, what your favorite things to do in leather and other crafts and/or art forms.

*Send this form along with your first years dues (\$24.00) to:*

Linda Stockhausen  
 12614 142nd. Ave. Ct. E.  
 Puyallup WA 98374  
 U.S.A.

*If you would like to subscribe to The Leather Crafters & Saddlers Journal through the Co-Op and include an additional \$24.00 for a one year subscription.*



## TWLeather, Inc.

Toll Free:  
**1-800-477-9923**  
2017A White Settlement Rd.  
Fort Worth, TX 76107  
(817) 877-5427, Fax (817) 877-5432  
Email: TWLeather@AOL.com

*Offering a wholesale discount to the PSLAC members*

Jim, Ken & Cal, Managers



Ph 1-901-728-5551  
**Leather**<sup>TM</sup>  
10% Discount for PSLAC Members  
**Leather Crafts and Supplies**  
Since 1996



**Leather Factory  
Spokane**  
28 West Boone Ave, Spokane, WA 99201  
Phone: (509) 328-9939  
Toll Free: 1-800-822-8437  
Fax: (509) 326-7019  
*Offering a wholesale discount to the PSLAC members*  
<http://www.flash.net/~lfmidas2/index.html>

## Brettun's Village Shops

302 Lake Street,  
Auburn, ME 04210  
(207) 782-0861  
URL: <http://www.brettunvillage.com>  
Email: [leather@brettunvillage.com](mailto:leather@brettunvillage.com)

*Offering a 10% discount to the PSLAC members*

Churchill Barton, Manager



**Kermit P. Creek**  
Manager  
Phone (406) 256-1355  
Fax (406) 256-1360  
Toll Free (888) 277-3323  
[www.leatherfactory.com](http://www.leatherfactory.com)

115 North 30th Street  
Billings, MT 59101-2032

*Offering a wholesale discount to the PSLAC members*



Toll Free Order Lines  
Tel: 1-(888) 263-5277  
Fax: 1-(888) 263-5086

## Hide Crafter Productions

*Offering a 25% discount (10 % on leather) to the PSLAC members*  
**ON-LINE CATALOG** <http://www.nwlink.com/~stelmack/hurst>

2017 B White Settlement Road  
Ft. Worth, TX 76107

email: [hcrafter@flash.net](mailto:hcrafter@flash.net)  
George Hurst, Manager



**Durham Hefta**  
Manager

Phone (503) 255-8818  
Fax (503) 255-9011  
Toll Free (888) 277-3360  
[www.leatherfactory.com](http://www.leatherfactory.com)

13221 N. E. Whitaker Way  
Portland, OR 97230-1128

*Offering a wholesale discount to the PSLAC members*

Outside Washington  
1-800-343-9949

(206) 328-0855  
Fax: 328-0859

## MACPHERSON *Leather Company*

Leather, Shoe Finding and Saddlery

Toll Free 1-877-728-5551

TERRY LEE DURBIN

519 12th Avenue S.  
Seattle, Washington 98144



## Dusty Johnson

**PLEASANT VALLEY SADDLE SHOP**

1220 S. County Rd. 21  
Loveland, CO 80537

Phone: (970) 669-1588

Fax: (970) 669-1589

E-Mail: [dusty@pvsaddleshop.com](mailto:dusty@pvsaddleshop.com)

URL: <http://www.pvsaddleshop.com>

*Offering a 20% discount to the PSLAC members*

## HERITAGE LEATHER COMPANY

LEATHER - HORSEHAIR - RAWHIDE  
LEATHER TOOLS - BOOKS - VIDEOS  
BRAIDING SUPPLIES - CLASSES  
COWHIDE RUGS  
MAIL ORDERS WELCOME

JoAnne Tackill  
Ph. (208) 375-5589  
Fax (208) 375-7168

285 N. Orchard St.  
Boise, ID 83706  
Hours: M-Sat 9-6

Support our advertisers and take advantage of the PSLAC Membership Discounts

## RG On-line

The Puget Sound Leather Artisans Co-Op can be found at

<http://www.nwlink.com/~stelmack/pslac.htm>

If you need the **UserId** and **Password** for the subscription pages, just contact the **Rawhide Gazette** at:

[churchil@nwlink.com](mailto:churchil@nwlink.com) ...or...

[stelmack@nwlink.com](mailto:stelmack@nwlink.com)

-- of course the password information is free for the Puget Sound Leather Artisans Co-Op members. Those on the Internet still need send \$10 per year for a membership to:

Linda Stockhausen  
12614 142nd. Ave. Ct. E.  
Puyallup WA 98374  
U.S.A.

*Your Photos here - if you send them to:*

Web Editor: Bob Stelmack  
Sanaruko Parktown South #1101  
Tomitsuka-Cho 1933-1  
Hamamatsu-Shi 432-8002  
Japan

*Photos sent in to the PSLAC are used, space and focus permitting.*

*They are also posted, in living color, on the Internet.*



### PSLAC

c/o Linda Stockhausen  
12614 142nd. Ave. Ct. E.  
Puyallup WA 98374  
U.S.A.

