

# Rawhide Gazette

Copyright © 2000 by PSLAC, All Rights Reserved

"Without question, the Rawhide Gazette is by far the best and most informative and comprehensive Guild publications of all of them! You are to be commended for your very fine and professional efforts. Keep up the good work. With admiration"  
/signed/

Al & Ann Stohlman, December 1997

Volume 6, Issue 8

Puget Sound Leather Artisans Co-Op

October 2000

## Hide Highlights

- Our Newest PSLAC Co-Director
- Bill's Back! Part I & II
- A Big Thanks to our Leather Sponsors
- My Stitching Horse
- Ken's Knothole
- The DEMO at the Fair
- Halloween Tips on Stiffening a Leather Mask
- How I Made a Saddle
- The Puyallup Fair Display
- Fair Entry Pictures
- Puyallup Fair Leathercraft Results
- 2000 Great Northwest Leatherworkers Trade Show at Pendleton, Oregon
- Special Puyallup 2000 Leathercraft Award
- From the Dusty Workbench



Woody Collins

Photo by Dusty Wert

## Welcome Our Newest PSLAC Co-Director -- Woody Collins

Woody has graciously accepted a position to replace our outgoing Co-Director **Chuck Carlson**. Woody, as you must already know, is very involved with the **Scouts and Children-in-Leather Program**. He also makes the monthly meeting place available. He teaches leather at a local college and is quite a prolific craftsman. A man of many talents and has given "just-a-little-more" to PSLAC to keep the group alive and growing.

Thanks Woody!

## Bill's Back!

I have always believed in telling it like it is. A little over two weeks ago, I went to **Madigan Army Medical Center** to have surgery for biopsies. It had been found that I have cancer again.

I will skip ahead a little, two days after surgery I had a perforated Ulcer. All the gastric juices went into my hip to my shoulder. I have never experienced such pain.

Back into surgery. This surgery is the one that almost beat me. For the next nine days, I did not have one drop of water or food. They were afraid that my stomach wouldn't take it and blow up again. If it had not been for the second surgery, I would have been home a week and a half ago.

### Meeting Announcement

MEETING  
Sunday,  
October  
22nd, 2-4pm

Location:  
WOODY'S PLACE--4248 A Street  
SE, Auburn

Back to the biopsies. This time the cancer is not in my lung. It is in my chest. Of the eighteen places they checked they found cancer in fifteen places. Due to the location of the primary cancer and the others, it will be impossible to operate. Chemo is out also. I start radiation the 10<sup>th</sup> of this month. My youngest Daughter was here from California during part of my hospital stay. She helped my wife get through the hard part. My oldest daughter is now here for a couple more days and is helping tremendously.

Obviously I will not be able to go to Pendleton, but you can bet I'll have a beer with **George Hurst** next year. **PSLAC**, wear those name tags... *Tell them who you are.*

**Bill Churchill**

## A Big Thanks to our Leather Sponsors

Thanks to the leather sponsors that donated leather for the Puyallup Fair for the demonstrations and the "hands-on" work.

- Hidecrafters sent us a whole hide.
- The Weaver Leather was the 300 2-inch rounders that Jeff punched out.
- The Tandy Leather was the hearts, stars and dinosaur shapes.

Thanks to a decision by Tandy, as they closed their retail stores, **Dusty & Linda** were told to give away or throw away any retail item left in the store.

As the acting managers, Dusty & Linda were kind enough to think of **PSLAC** and donated the bits and bobs of leather shapes (among other things) to the **Children-in-Leather** programs. So we thank Tandy, indirectly, for their contribution to the Puyallup Fair Demonstrations.

## My Stitching Horse

(ed. note: Refer to last month's issue of the *RawHide Gazette* for more pictures of the *Stitching Horse* by Charles.)

### Bill of Materials:

#### Wood

Base, Mahogany  
3/4 x 15 x 7 1/2  
Uprights, Walnut  
3/4 x 20 1/2 x 4 1/4 (2)  
Jaw pieces, Walnut  
3/4 x 2 x 4 1/4 (2)  
Brace, Oak  
1 3/4 x 4 1/2 x 2 7/8

#### Hardware

Brass all thread  
5/16 x 7 1/2  
Brass Acorn nut  
5/16  
T nut  
5/16  
Coiled Spring  
1/2 X 6  
Hex Nuts  
5/16 thread  
Plastic Knurled Knob with thru hole  
Large Washers (2)  
T Strap Hinge

The basic reference that you have to have in your Library. If you don't you can't make it – and no, I don't get any cut from this publication. *“The Art of Hand Sewing Leather”* by **Al Stohman** — his legend forever lives on in all the work we do.

The big difference is that this is more transportable and can be used nearly anywhere.

The closure is simple enough. In order starting from the fixed upright side. On the threaded brass rod:

- nut
- threaded T nut
- fixed upright
- nut

...those secure the threaded rod to the fixed upright.

Next the

- spring
- washer
- movable upright with a slot in it
- washer
- knurled knob

...then acorn nut on the end.

Hope that is simple enough? Refer to the pictures.

**Charles**  
LthrWrk@aol.com



## The DEMO at the Fair

I took pictures of kids that did the stamping and then I would ask the parents if they wanted me to send them the picture to them by e-mail. I have sent a batch and I have 5 addresses that I'm going to send this AM.

Thursday was a great demo. We had 3 of the guys (**Woody, Jeff and Len**) helping the kids get the stamp onto the leather and I would put a hole so they could make a key fob when they get home. I would put 2 holes for the kids that wanted to make a necklace.

I wonder if any of the sponsors can donate some suede lace or we can buy some for the girls to make necklace and make a short suede lace for a key fob?

I hope you get the atmosphere of the demo. Looks like we are busy that's be-



cause we were. However we all had a ball.



**Dusty Wert**



## Ken's Knothole

We're getting some good news/bad news, on **Bill**. The bad news is that his cancer has returned and we won't have the pleasure of his company and the benefit of his experience/contacts in the leather bus' down at Pendleton later this month. The good news is that he's a scrapper and he's fully committed to beating this thing. He's at home now, and sounds like he's in good spirits, though pretty weak. I've been trying to think of what **PSLAC** could do for him. I think the best gift we could give him is our commitment to keep the Co-op going strong and continue the focus he and **General** have set, to pass on the love of leather craft/art to the kids. We'll miss him down at Pendleton, but he's said he fully plans to be there next year!

September meeting attendance was a bit lower than normal, *probably because yours truly blew it and didn't get the Gazette to **Dusty** so she could mail it before the meeting.* Somehow I tried to put an extra Sunday in the month, quite unsuccessfully. Will make a note to do a little better job of looking at the calendar, in the future. We've also worked out a way for her to be able to print a high quality copy of the RG herself, so now we don't have the added time for me to print and mail to her. Some more bad news/good news, at the meeting we announced that **Chuck Carleson**, one of the PSLAC Directors has had to resign, due to pressing family and work needs. **Woody Collins** has agreed to step in and fill his spot. Thanks Woody. We may, in the future, ask other active members to do the same.

It looked like we had a pretty good showing for the leather display at the **Puyallup Fair** this year. Two really full sections. I was very impressed with both the quantity and with quality of the work. General and Dusty will be picking up those items that club members had Bill and General take down for them. Woody, Jeff, and I believe Dusty and General, were on hand at least three different days in the **Hobby Hall** at the Fair, to give hundreds of kids a chance to have some hands on experi-

ence with leather craft and take something home that they made themselves. Thanks to all who participated.

During the September meeting we had some discussion about making up larger, more visible PSLAC nametags for folks to wear, when they go to functions like Pendleton. We decided that making leather holders for the nametags might make a nice project for the October meeting (*which by the way, is a week earlier, on Sunday, 10-22-00, due to the number of members who will be at Pendleton the last Friday, Saturday and Sunday of October. Also due to Thanksgiving, we've moved the November meeting up to Sunday, 11-19-00. Both will be at Woody's*). So if you want to make nametag holders, bring a chunk of 2 to 3 ounce leather, and your tools with you, to the October meeting and we'll take a whack at it together. At the October meeting, we will have available, the first batch of the Rawhide Gazette CD, for sale to members. Price to be announced. **Bob Stelmack**, our intrepid editor, has put a lot of time and effort into this project and we're all pretty excited about having available. We'll also be taking copies with us to Pendleton. **Roy** discussed having another donation pickup at the November meeting for items for the Veterans Homes, such as eyeglass cases that either clip on a belt or have a neck strap. We'll have suggestion for other items in the November RG. Woody indicated that he will be teaching a 6 week evening *Introduction To Leather Work* class, out of the continuing education program at Renton Vocational Tech. One of our members, **Terry**, suggested we look at building a library of leather craft videos that members can check out. I know my black powder gun club had done this and it's been very successful. More on this later. That's all from me, for now. *See you in October, on .10-22-00*



**Ken Eriksen**  
PSLACC0-Director

## Bill's Back -- Part II

A lot has changed since I last sent an E-mail to you all. Before, and I don't know if I told you, The Doctor's gave me a 20% for 5 to 15 months. Well I was with the Doctor's yesterday from 7:30 AM until 3:00 PM. **General and Sigrid** were with me. Need all the back up I can get. The surgeries are healing up good except for one small place. They expect that it will be ready by next week. I ache all over, but at my age, why not.?

From the Surgery Dept. I went to ONCOLOGY. The Oncology Dept. has a "Hotshot" Lt. Col. that is in charge of the Oncology Section. He is a hell of a guy...Does not pull any punches. (I like that). The first thing he asks is, "How does 60% sound instead of 20%...??. Radiation starting tomorrow and a different type of Chemo starting as soon as this small incision heals. Most likely next week. Radiation is 5 days a week and Chemo 1 day a week. Again I quote the Doctor, "This Chemo is going to be a "Butt Bitter".. You can say 'Uncle' any time that you want. So it remains to be seen. It sounds so much better.

*Again I thank you for not sending cards, E-mails, and Telephone calls, flowers (Except the Burien bunch).* It isn't that I would not like to hear from you, but we are keeping everything open. We, Sigrid and I, appreciate all of your thoughts and prayers.....

Another piece of news that I almost forgot. When I was in the hospital (Doctor's explanation) I would hear bits and pieces from different people. So it wound up that when I was discharged from the hospital, in my mind I had been told that the Surgeons had looked in 19 places and found Cancer in 16 places. Not SO! Said Oncology. They Checked 16 places and the cancer has only moved to One Node. (A super node but still ONLY one node).

**Bill Churchill**

# Halloween Email Tips on Stiffening a Leather Mask

## THE QUESTION:

I've made a mask out of leather and I want to give it a coating on the back to make it stiffer. I have a publication from 1969 saying to coat it with spray varnish. My husband says it's no longer available (Can that be true?). Do you guys have any suggestions? I need something that I can brush or spray on and it will make it stiff, but whatever I use can't soak through.

## THE TIPS:

1. The best stiffener is to boil the leather first or soak repeatedly with really hot

water. It also helps to design the structure with stays — like in a collar or on a sail. I usually just glue in a 10 oz. leather panel where it is needed — underneath.

OK, so what do you do if you didn't use vegetable tanned leather? ...or it's too late to change the structural design. Try one of these:

- Put on a water-based polyurethane. Use a sponge brush if you don't have or like to spray, it's much safer for your lungs, anyway. Use many, many coats — at least 4. Ten, if you used oil tanned or chromed leather.
- Use a base. Put the whole thing on a paper-mache' blank. This is the way I make most of my masks, anyway, as they can be easily replaced by the owner without the skills of the artist. You see, masks, like hats, can get really dirty where the rubber meets the road, so to speak.

This has worked well for me and is inexpensive.

**John Berthelot**  
leather1@home.com

*(ed note: I have a leather hat that has been waterproofed and formed using undercoats of clear satin acrylic. The hat has been reformed by using denatured alcohol, which softens the leather until the alcohol evaporates. Perhaps this would work for the inside of a leather mask.)*



**John Hubley**  
jbhubley@worldnet.att.net

2. I know this may sound weird, but I've made a bunch of formed leather masks and have had great success with nail polish. It dries fast, is hard, doesn't soak through and, well, comes in all kinds of neat colors! The other thing I've tried that works very well is fiberglass resin. Just a standard auto fiberglass repair kit, without using the mat. You'll get more bang-for-the-buck with the fiberglass, but the downside is it's messy and you have to use it really fast or it hardens. The nail polish will end up costing more but it's a lot more user-friendly.

**Christi**  
tamehawk@aol.com

3. I have made a few of the leather masks, and what I use to stiffen the leather is at least 3 coats of white glue. I use a regular paint brush and just put a coat of glue on the inside of the mask, let it dry, it will dry clear, and the repeat.

### RawHide Gazette

**Editor / Publisher:** Bob Stelmack  
**Co-Founders:** Bill Churchill & General Seymour  
**Treasurer/Secretary:** Linda Stockhausen

Copyright © 2000 PSLAC, Puget Sound Leather Artisans Co-Op

The RawHide Gazette is published monthly (12 times a year). Address for information and correspondence: PSLAC, c/o Linda Stockhausen, 12614 142nd. Ave. Ct. E., Puyallup, WA 98374, U.S.A., (ph. 253-770-8751)

email: bingbudz@postazone.com

The RawHide Gazette is provided to the Puget Sound Leather Artisans Co-Op as a part of their membership benefits. Annual dues are \$24.00 USD per year.

All submissions are subject to editing for clarity and length. All articles submitted must be accompanied by name, address and permission of writer.

**POSTMASTER:** Send address changes to PSLAC, c/o Linda Stockhausen, 12614 142nd. Ave. Ct. E., Puyallup, WA 98374, U.S.A.

### Advertising Rates

The RawHide Gazette now offers advertising space to interested parties. Ad spaces are as follows:

1/4 Page or Business Card ..... \$60 USD  
1/2 Page ..... \$110 USD  
1 Full Page ..... \$200 USD

These rates cover a six month time period. Guild members are entitled to a 25% discount. Leather companies supporting PSLAC are given free Business Card size advertisement, additional space at regular rates.

# How I Made a Saddle

(ed. note: This article is by **Joyce Beaver** and was submitted to share her work with the PSLAC RawHide Gazette readers.)

The making of a saddle seems to be the dream of each leather crafter at one time or another. This year my dream finally became a nightmare!

When I went to the Pendleton, Oregon get-together in October of 1999 I bought some of the basic items needed for a saddle. I purchased a miniature Bob Crosby saddletree from Hercules Saddle Tree Company. I spoke with the people who own Bork saddle hardware about miniature items. They have a miniature hardware selection to go with the miniature saddles. I copied the directions Dusty Johnson provided in his series of Trapplings of the Old west so it would be easier to work with. I bought leather, and sent to Pendleton to order the hardware after I came home.

Now I was ready (?) to make the saddle!

I started with smoothing the tree; so far no problems. Cut out and covered the gullet. Things still are doing well. Started the ground seat. First three layers of the "all leather ground seat" went in just fine, smoothed just fine. Put the top layer on. It looked strange. Looked at the pictures. Looked at the saddle. Took the ground seat apart back down to the bare tree. Started over with the ground seat. Put last piece on. Looked much better.

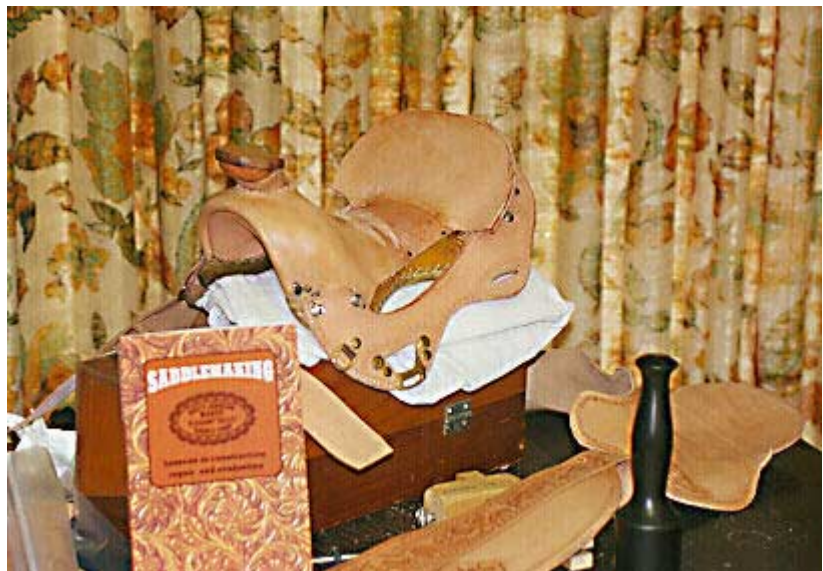
Cut out pieces for the flat plate rigging. Modified from the "article" to the "book" directions on installing the hardware. (I wanted to make a saddle that would be safe if it were full sized.) I hand stitched the

piece together. Put rigging onto the tree, again modifying from article to book directions. Looks good.

I cover the horn and wrap it. Sew around cap after drilling holes with a drill. Looks



good after smoothing the horn cap. Put the fork cover on. Not looking very good. Can't figure what I did wrong. Take the cover off and recut. Put new fork cover on.



Looks much better. Look a saddle to this point. Looks strange. The rigging plate is not level to the floor! Take the plate off and

cut some off. I reattach the plate using a level. Looks much better.

I cut out tooled the back jockeys and the "name plate". The stirrup leathers and fenders were next I used copper rivets and buffs to attach the top and hand sewed the bottoms. Put the stirrup leathers on just for show, and it looked just fine. Twisted the bottoms just fine.

The seat was next. I must have gotten in a huffy because it just didn't want to fit. Took it out and put it back three times before it behaved. The wool on the skirt came from a very good sheep. He was very good eating. The latigo strips should have been skived, but with no skiver they just had to work.

My drawdown stand was a belt wrapped around a tool box and snugged over a pillow. When I attached the skirt to the tree, I again used the 'safe' rather than the 'cute' style. I had forgotten to plan ahead before I put the sheep on the skirt, so I had to cut slits to put the saddle strings into. Things are getting down to the wire, so it is a nerve wracking experience, one slip and I start over again on another shoulder!

The cantle layers look pretty good. I had



decided not to make a Cheyenne Roll. I used a small drill bit to make the holes in the cantle wrap. I started off center with

two lengths of thread on four needles to hand sew the five layers together. I again used the belt on the tool box to help keep the saddle from skidding too far away to work on. Got it sewed up OK, no blood on the leather so far!

Sewed the nameplate to the jockeys. The back doesn't look too bad. Getting down to the final assembly and I am getting very excited to be finished. I drilled holes through the leather and the tree to get ready to assemble the layers. Finally it is together and the sheepskin doesn't have any holes showing on the "horse side".

The finished saddle.

I wanted the oxbow stirrups even though I seem to be the minority in my circle of friends. I put 'wear leather' around the top of the stirrups and did a fair job of ending the lace wrap. The chinch I made with simulated mohair yarn using the pattern from the book "It's a Cinch" purchased from Rio Rondo, the company dealing with very tiny horse tack findings. Because of the thickness of the tie strips and not making the "well around the bars" deep enough, the rear jockeys don't look as well as they should. The saddle blanket was purchased from a local farm - feed store.

I tried to make the saddle look "real" even to the way things are tied together

### Joyce Beaver

*(ed. note: Not being a saddler or understanding the terms. The pictures shown here may be out of project order, but do show the careful craftsmanship and many steps required to build a saddle.)*





**Joyce Beaver's Saddle Making Process (cont.)**







**Joyce  
Beaver's  
Saddle  
Making  
Process  
(cont.)**



**The  
Finished  
Product**

# The Puyallup Fair Display



*Photos by Woody Collins*

## September 2000



October 2000 --HideSide 10

Dusty -  
Lacing  
caddy



Deb - Canteen

### Fair Entry Pictures

Several samples from the Puyallup Fair entries. Many more pictures than we have room for, but all pictures are posted on the Internet, in living color, at:

[http://www.egroups.com/files/rawhide\\_staff/](http://www.egroups.com/files/rawhide_staff/)

*Photos by Dusty Wert*

### Woody - bookcover, also Judy Ferguson Roughout stamped belt



*The two pictures of Deb Ladaudio's work were used by permission ref: email Subject: Picture Date: Thu, 5 Oct 2000 18:04:17 -0700*



Deb - Knife Sheath



Kathy Skochilich -  
Lynx Fur Hat

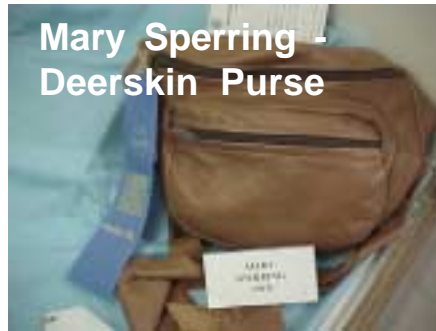


Mary Sperring -  
Deerskin Jacket



Peggy  
Harbison -  
Match box

Photos by Dusty Wert



Mary Sperring -  
Deerskin Purse



Ken Imus -  
Picture



Ken Imus - Purse



Toll Free:  
(800) 541-3264  
**Bee Natural  
Leather-  
care**

*The ultimate in  
leather care  
products*

P.O. Box 820803, Vancouver, WA. 98682-0018  
(360) 891-7178 , FAX: (360) 891-7166  
Email: [bnatura@pacifier.com](mailto:bnatura@pacifier.com)

**This Months SPOTLIGHT on PRO-CARV — Working and Tooling  
Leather Formulation**

**DIRECTIONS:**

Dilute concentrate with water: 1 part PRO-CARV to 10 parts water is recommended for carving and tooling. When immersing the leather for shaping or forming, add 8 oz. PRO-CARV to 3 gallons of water.

**NO CASING IS NECESSARY**

Leather can be immersed or sponged with this solution. PRO-CARV eliminates the need to case leather. PRO-CARV allows you to begin working with the leather after immersing for 3-5 minutes because of the very rapid penetration into even the thickest hide. Allow the surface to dry somewhat before beginning forming or carving.

**Contact MacPherson's, Hide Crafters and Golier  
Leather for any of the fine Bee Natural Leather products.**

*Advertisement*

# Puyallup Fair Leathercraft Results\* for September 2000

Class #1850		
1st Biker		Glenn Woessner
2nd Eagle/bear/wolf		Woody Collins
3rd Framed picture, Dog		Dusty Wert
HM Angel		Barbara Lourdes
Class #1855		
1st Scabbared/West		
Acorn with flowers		Woody Collins
2nd Knife Sheath		Len Madison
Class #1860		
1st Bible Case w/Jesus		Glenn Woessner
2nd Large Match Case		Peggy Harbison
3rd Awl & Needle		Dusty Wert
Class #1865		
1st Handbag Bell		Jeff Bement
Class #1870		
1st Walke Talke Care R		Dusty Wert
2nd Pipe cleaner Case		Len Madison
Class #1875		
1st Small Notebook Cover		Alice Courtney
2nd Ltr Port. W/Acorn		Woody Collins
Class # 1880		
1st Western Floral		Jeff Bement
2nd Wallet w/horse head		Woody Collins
Class #1885		
1st Western Floral/Silver		Woody Collins
2nd Belt & Buckle Barbed wire		Donald Ferguson
3rd 5 strand trick weave		Len Madison
Class # 1890		
1st Indian Head Match Box		Peggy Harbison
2nd Bunny Rabbit Clock		Dusty Wert
3rd Flyswater		Donald Ferguson
HM Xmas Bells		Glenn Woessner
Class # 1895		
1st Belt buckle/basket weave		Donald Ferguson
2nd Coin Holder/Gecko		Wendy Cone
Class #1900		
1st Hair clip-Rose Bud		Wendy Cone
Class #1905		
1st Alaskan Lynx Cat hat		Kathy Skochilich
2nd Leather Jacket W/Antler		Mary Sperring
Class #1910		
1st Shoulder Bag		Mary Sperring
2nd Horse Bridle w/ silver		Jeff Bement
3rd Pancake gun holster		Woody Collins
HM Book Cover Indians/front		Dusty Wert
Class # 1915		
1st Australian Stock Whip		Len Madison
2nd Eagle Key Fob		Dale Buckenberger
HM Coaster (Japan)		Dusty Wert
Class # 1918		
1st Tingtlet Mask		Jeff Bement
2nd Buffalo Hair Rattle		Dale Buckenberger
Class # 1920		
1st Christmas Door Hanger		Alice Courtney
2nd Guitar Strap		Len Madison
3rd Comedy Pix-toothbrush/tip		Dusty Wert
Class # 1929 Best in Leathercraft Division		
Scabbared/West Acorn w/flowere		



## Professionals

Class # 1950		
1st Cavalry Rider		Frederick Nachbar
2nd Picture Churchill		Bill Churchill
3rd Indian w/feathers picture		Kenneth Imus
HM Picture Cougar		Judy Ferguson
Class #1955		
1st Small Tooled Article		Bill Churchill
2nd Belt Buckle Sheriff		Judy Ferguson
3rd Ck. Bk. cover-Deer head		Frederick Nachbar
HM Wallet Cougar		Phill O'Neill
Class # 1955		
1st--Photo Album w/trout		Bob Stelmack
2nd--Canteen		Debra Laudadio
3rd--Handbag-Sunflower		Kenneth Imus
HM--3 Legged stool		Judy Ferguson
Class # 1965		
1st Gun Holder		Debra Laudadio
Class # 1970		
1st Dress-Brown/blk		Elizabeth Latham
2nd Belt W/Fanny Pack		Kenneth Imus
3rd Chaps		Phil O'Neill
Class # 1975		
1st Knife Sheath		Debra Laudadio
2nd Chaps-Blue		Elizabeth Latham
3rd Hat band with hearts		Kenneth Imus
Class # 1977--No entries in this class		
Class # 1999 Best in Leathercraft Division-Prof.		
Cavalry Rider		Frederick Nachbar

(\*ed. note: There may be some errors in this list. Those that were known were corrected.)

No entries in classes: 1800, 1805, 1810, 1815, 1820, 1822, 1825, 1828.

Announcing the  
**2000 Great Northwest Leatherworkers Trade Show**  
**Pendleton, Oregon**

OCTOBER 27/FRI (9-5pm) — 28/SAT (9-5pm) — 29/SUN (9-2pm)  
at the Pendleton Convention Center  
1601 Westgate  
Pendleton, OR 97801

All Leatherworkers Cordially Invited  
FREE ADMISSION

SEE - COMPARE - BUY  
All Your Leather Shop Needs Under One Roof

ALL KINDS OF LEATHER

Stitching and other Leather Machinery  
Custom Stamping Tools - Edgers - Knives - Creasers - Awls  
Leather Dyes and Leather Care Products - All Kinds and Colors of Thread  
Mallets - Books - How-To Videos - Pattern Paks - Leather Specialty Items  
Saddle Trees - Saddle Hardware - Silver Work - Rawhide - Horsehair - Custom Makers Stamps  
Choose from 1,000's of leather items

Visit With Over 80 Exhibitors Manufacturers and Suppliers

Free: Thursday PM Banquet and Entertainment, 6pm at Convention Center  
Mingle and Meet Friends in the Leather Business from the Great Northwest

“LEATHERWORKERS”

Bring Your Leatherwork  
to Pendleton  
Show and Sell

Bring your Saddles - Tack - Chaps - Wall hanging - Personal Items  
Holsters - Pictures - Belts - Wallets - Stand Alones - Sheaths - etc..

Price and Sell them at the Show

Entry Fee \$5.00 per Item

No COMMISSION CHARGES

Event Sponsored by The Leather Crafters & Saddlers Journal  
331 Annette Court, Rhinelander, WI 54501

715-362-5393

(Note: Information taken from the latest Leather Crafters and Saddlemens Journal)

**Sign up For Some Workshops at the Great Northwest Leatherworkers Trade Show at Pendleton, Oregon**

**These Workshops and Classes are Taught by Some of the Country's Finest Craftsmen and Thoroughly Qualified Instructors**

**SOME STARTING TUESDAY OCT 24, 2000, OTHERS DURING TRADE SHOW**

**To Sign up — Write: The Leather Crafters & Saddlers Journal, 331 Annette Court, Rhinelander, WI 54501  
Or for CC's Call 715-362-5390**

3 Days \$225

**Robb Barr: "Rainbow Trout"**

Tues - Oct 24, 1PM

Wed - Oct 25, 9AM - 5

Thurs - Oct 26, 9AM - 5

Room 5

3 Days \$225

**Jim Hurlbutt: 12 String Kangaroo Hide Quirt**

Tues - Oct 24, 1PM

Wed - Oct 25, 9AM - 5

Thurs - Oct 26, 9AM - 5

Room 4

1/2 Day \$35

**Bob Beard: Carving a Desert Scene**

Fri - Oct 27, 8:30 - NOON

Room 5

1 Day \$70

**Jim Hurlbutt: 13 String Kangaroo Hide Belt**

Fri - Oct 27, 8:30 - 5PM

Room 4

1/2 Day \$35

**Pete Gorrell: Beginning Carving**

Fri - Oct 27, 1 - 4:30pm

Room 3

1/2 Day \$35

**Verlane Desgrange: Patten Development & Layout for Western Saddles**

Fri - Oct 27, 1 - 4:30PM

Room 5

1/2 Day \$35

**Clint Fay: Sheridan Style Carving**

Sat - Oct 28, 8:30 - NOON

Room 1

1/2 Day \$35

**Clint Fay: Sheridan Style Carving**

Sat - Oct 28, 1 - 4:30pm

Room 1

1/2 Day \$35

**Pete Gorrell: Convex - Concave Stamping**

Sat - Oct 28, 8:30 - NOON

Room 3

1/2 Day \$35

**Pete Gorrell: Saddle Pattern Layout**

Sat - Oct 28, 1 - 4:30PM

Room 3

1/2 Day \$35

**Troy West: Western Carving / Stamping**

Sat - Oct 28, 8:30 - NOON

Room 2

1/2 Day \$35

**Jim Hurlbutt: 4 String Kangaroo Hatband**

Sat - Oct 28, 8:30 - NOON

Room 4

1/2 Day \$35

**Pete Gorrell: Pricing Your Work**

Sun - Oct 29, 9 - 11AM

Room 3

1/2 Day \$35

**Fred Nachbar\*: Leather Christmas Cards**

Sun - Oct 29, 9 - NOON

Room 5

\* Member of PSLAC



FREE — 19 Years & Under - Fri 6:30pm - 9pm Introduction to Leathercraft  
1/2 Day \$35 Sun - Oct 29, 9-NOON Jim Linnell Wallet Carving Designs Room 2

To Receive Your Complete Seminar Packet

CALL 715-362-5393

or

WRITE: The Leather Crafters & Saddlers Journal 331 Annette Court, Rhinelander, WI 54501



## Special Puyallup 2000 Leathercraft Award

Class #1999

Best in Leathercraft Division Professional

Title: "Cavalry Ride"

by



Frederick Nachbar

## PSLAC Membership Application

If you know someone who is interested in leathercraft — give them this information:

**Puget Sound Leather Artisan Co-Op MEMBERSHIP APPLICATION**

**YOUR NAME:** \_\_\_\_\_

**STREET ADDRESS:** \_\_\_\_\_

**CITY, STATE, ZIP:** \_\_\_\_\_

**PHONE NUMBER:** (\_\_\_\_) - \_\_\_\_\_

We publish a membership list with our members expertise listed. This list is used to refer possible clients to the best person for the job. Tell a little about yourself, how you got started in leather, what your favorite things to do in leather and other crafts and/or art forms.

*Send this form along with your first years dues (\$24.00) to:*

Linda Stockhausen  
12614 142nd. Ave. Ct. E.  
Puyallup WA 98374  
U.S.A.

*If you would like to subscribe to The Leather Crafters & Saddlers Journal through the Co-Op and include an additional \$26.00 for a one year subscription.*





## TWLeather, Inc.

Toll Free: 1-800-477-9923  
2017A White Settlement Rd.  
Fort Worth, TX 76107  
(817) 877-5427, Fax (817) 877-5432  
Email: TWLeather@AOL.com

*Offering a wholesale discount to the PSLAC members*



Ph 1-901-728-5551  
**Leather**<sup>TM</sup>  
10% Discount for PSLAC Members  
**Leather Crafts and Supplies**  
Since 1996



**Leather Factory  
Spokane**  
28 West Boone Ave, Spokane, WA 99201  
Phone: (509) 328-9939  
Toll Free: 1-800-822-8437  
Fax: (509) 326-7019  
*Offering a wholesale discount to the PSLAC members*  
www.leatherfactory.com

## Brettun's Village Shops

302 Lake Street,  
Auburn, ME 04210  
(207) 782-0861  
URL: <http://www.brettunvillage.com>  
Email: [leather@brettunvillage.com](mailto:leather@brettunvillage.com)

*Offering a 10% discount to the PSLAC members*

Churchill Barton, Manager

## The Leather Factory



**Billings**

**Kermit P. Creek**  
Manager  
Phone (406) 256-1355  
Fax (406) 256-1360  
Toll Free (888) 277-3323  
www.leatherfactory.com

115 North 30th Street  
Billings, MT 59101-2032

*Offering a wholesale discount to the PSLAC members*



Toll Free Order Lines:  
1-(888) 263-5277  
Fax: 1-(888) 263-5086

## Hide Crafter Productions

*Offering a 25% discount (10 % on leather) to the PSLAC members*  
**ON-LINE CATALOG** <http://hidecrafter.com>

2017 B White Settlement Road  
Ft. Worth, TX 76107

George Hurst, Manager  
email: [hcrafter@flash.net](mailto:hcrafter@flash.net)

## Leather Factory



**Portland**

**Durham Hefta**  
Manager

Phone (503) 255-8818  
Fax (503) 255-9011  
Toll Free (888) 277-3360  
www.leatherfactory.com

13221 N.E. Whitaker Way  
Portland, OR 97230-1128

*Offering a wholesale discount to the PSLAC members*



Outside Washington  
1-800-343-9949

(206) 328-0855  
Fax: 328-0859

## MACPHERSON

### Leather Company

Leather, Shoe Finding and Saddlery

*Offering a 30-40% off retail discount to the PSLAC members*

519 - 12th Avenue S.  
TERRYLEEDURBIN  
Seattle, Washington 98144



## Dusty Johnson

PLEASANT VALLEY SADDLE SHOP

1220 S. County Rd. 21  
Loveland, CO 80537  
Phone: (970) 669-1588  
Fax: (970) 669-1589

E-Mail: [dusty@pvsaddleshop.com](mailto:dusty@pvsaddleshop.com)  
URL: <http://www.pvsaddleshop.com>

*Offering a 20% discount to the PSLAC members*

## HERITAGE LEATHER COMPANY

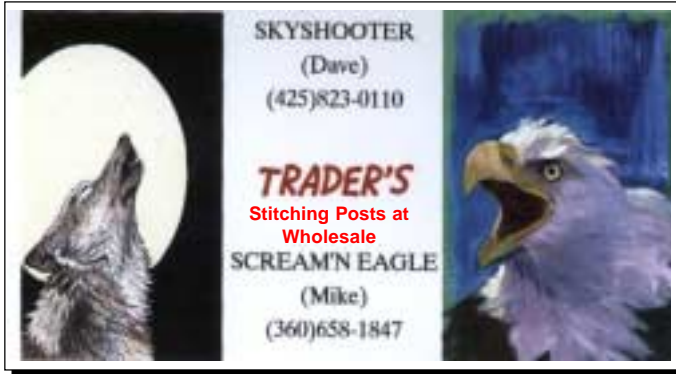
LEATHER - HORSEHAIR - RAWHIDE  
LEATHER TOOLS - BOOKS - VIDEOS  
BRAIDING SUPPLIES - CLASSES  
COWHIDE RUGS

MAIL ORDERS WELCOME

JoAnne Tuckitt  
Ph. (208) 375-5589  
Fax (208) 375-7168

285 N. Orchard St.  
Boise, ID 83706  
Hours M-Sat 9-6

Support our sponsors and take advantage of the PSLAC Membership Discounts



**SKYSHOOTER**  
 (Dave)  
 (425)823-0110  
**TRADER'S**  
 Stitching Posts at  
 Wholesale  
**SCREAM'N EAGLE**  
 (Mike)  
 (360)658-1847



**THE LEATHERCRAFT STORE**  
**MAIL ORDER & INTERNET SALES**  
 LEATHER HIDES, LEATHERCRAFT SUPPLIES, TOOLS,  
 KITS, BELTING, BUCKLES, SADDLE & TACK HARDWARE,  
 NATIVE HERITAGE KITS, LEATHER LACE & MORE  
**VISIT US AT**  
<http://theleathercraftstore.safeshopper.com>  
 253-226-1150  
 P.O. Box 4551  
 Spanaway, WA.  
 98387-4036

## Pattern Sharing

### Wanted

I am looking for ladies handbag patterns, (cutting and tooling patterns). There were many beautiful patterns available in the 1940's, 1950's, and 1960's, but now there are precious few. I would love to borrow or trade for some of these beautiful old patterns.

### Have to Offer

I can trade moccasin patterns. The moccasin pattern pack has various sizes.

### Contact Information

Mike Tillery  
 Rt. 1 Box 1294  
 Palestine Texas 75801-9715  
 tillery@flash.net

*Your next request or offer goes here...*

## From Ken to Paul to Siberia

If you have time to put a little something in the Gazette, please add a big thanks from me to **Ken Imus** for his contribution. Ken sent me a half-dozen butterfly barrettes, which I took with me to **Siberia** last month. I'll have to get the pattern from him so I can make some before my next trip there. I (don't know when it'll be, but I know I'm going again! I now have six "butterfly girls" spread across a few hundred miles of northwestern Siberia, from the large city of **Perm** to the small town of **Nitva**! The only thing I'm bummed over is that I don't have any pictures of girls wearing them - only one of the orphanages when I gave them out allowed pictures, and my digital camera broke down the day before we went to that place!

**Paul Simmons**  
 psimmons2@uswest.net



# From the Dusty Workbench

As important as to get the entries into the fair, it is just as important to get them out. So, General, Rich and I went to the fair on Tuesday the 26th. Once again we are able to drive onto the fair grounds. The parade wasn't as long as before. Sadly Bill wasn't in the parade leading this time. I was there to take the pictures of the entries and when I got at the Hobby Hall it was really busy.

I tried to get to the leather entries, but they were leaving faster than I could take the pictures. I tried to get as many entries that I could. However most of them were still in the case and I couldn't get a good shot. If I didn't get a picture of yours I'm sorry.

There was a lot of entries (that was great), however if you have a young person around you, PLEASE get he or she to enter something next year, because there was not one young persons entry.

Well now that the FAIR is over now -- it is on to Pendleton, Oregon. I will be there with camera in hand. We are going to have fun.

Take care.....Dusty

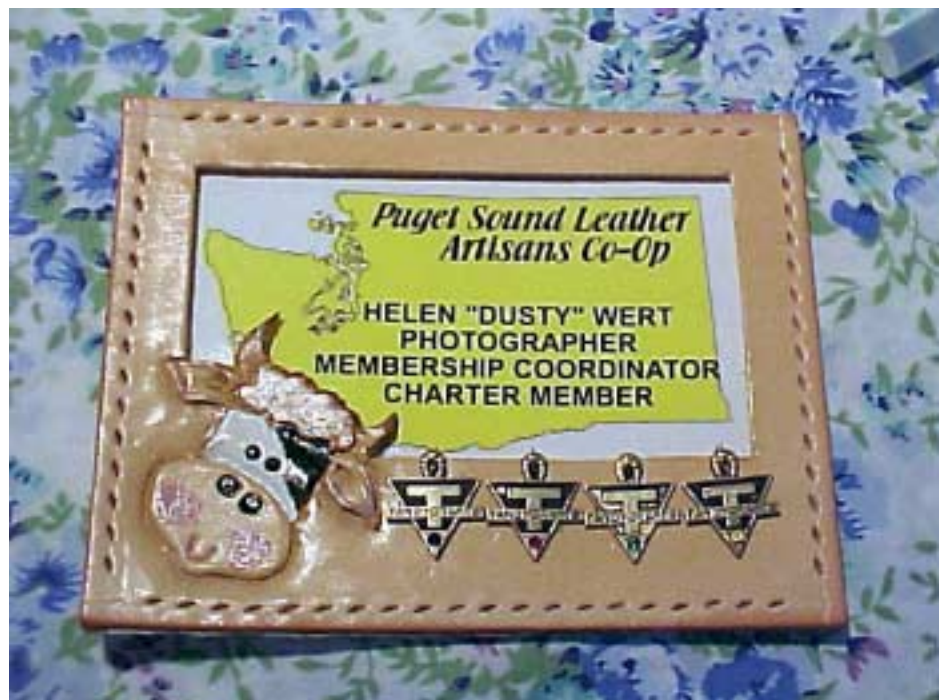
# Pendleton & PSLAC

There are a lot of members going down to Pendleton and Dale is doing a good job of making name tags so they will really see us there this year.

So with that in mind, the plans are to make a holder out of leather at the meeting, which is going to be October 22nd. I'm going to bring my Laminator and I'll laminate your card and you can work on the holder. I don't know what Ken had in mind, but I think you should bring your leather and a few tools. I'll bring my tool chest and will have my super shear and leather weld and pretty much all one would need so we will have to take turns or maybe others can bring things to work with.

This is mine. I have to lace it and find a way to attach it to my clothes. I might have to put it over my neck like a necklace, but I'm going to look around.

**Dusty**



# RG On-line

The Puget Sound Leather Artisans Co-Op can be found at:

<http://pslac.org>

If you need the **UserId** and **Password** for the subscription pages, just contact the **Raw Hide Gazette** at:

[stelmack@nwlinc.com](mailto:stelmack@nwlinc.com)

-- of course the password information is free for the Puget Sound Leather Artisans Co-Op members. Those on the Internet still need send \$10 per year for a membership to:

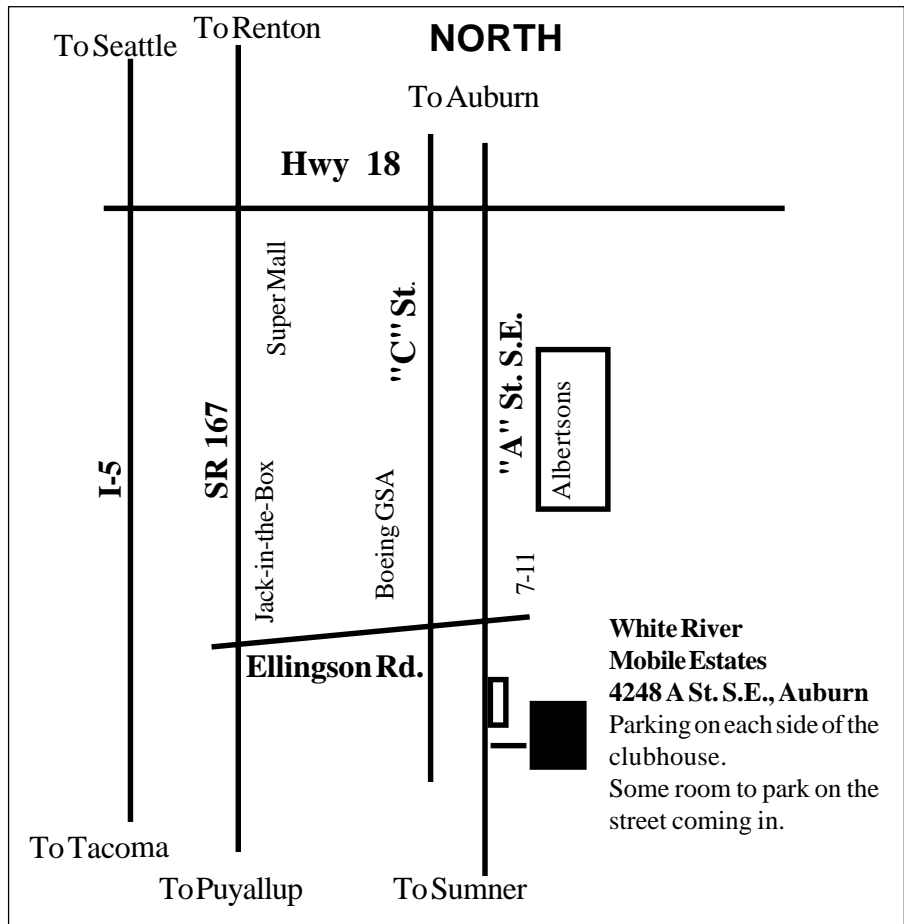
Linda Stockhausen  
12614 142nd. Ave. Ct. E.  
Puyallup WA 98374  
U.S.A.

*Your Photos here - if you send them to:*

Web Editor: Bob Stelmack  
7 Memorial Hall Drive  
Wellingore LN5 OBD  
Lincoln  
England

*Photos sent in to the PSLAC are used, space and focus permitting.*

*They are also posted, in living color, on the Internet.*



**White River  
Mobile Estates**  
4248 A St. S.E., Auburn  
Parking on each side of the  
clubhouse.  
Some room to park on the  
street coming in.

**PSLAC**  
c/o Linda Stockhausen  
12614 142nd. Ave. Ct. E.  
Puyallup WA 98374  
U.S.A.

