

Raw Hide Gazette

Copyright © 2002 by PSLAC, All Rights Reserved

"Without question, the Raw Hide Gazette is by far the best and most informative and comprehensive Guild publications of all of them! You are to be commended for your very fine and professional efforts. Keep up the good work. With admiration"
/signed/

Al & Ann Stohlman, December 1997

Volume 7, Issue 12

Puget Sound Leather Artisans Co-Op

March 2002

Hide Highlights

- New Sponsor for PSLAC:
eLeatherSupply.com
- New Pentel Metallic Brush Pens
- Bill Churchill
- Children's Leather Program AWARD Nomination Form
- Peter's Leather Flowers
- Surplus Store for the Leather Craftsman
- Belt and Burnish Help
- Saddle for This Horse?
- Sewing Lesson
- Another Book Press?
- Ken Imus' Batik Seminar
- February Meeting Sharing
- Harry's Happenings

Completed Elk by Jackie Holliday



Meeting Announcement

NEXT MEETING:

Seminar: *How to Give a Demo* at 12:00pm
Meeting time: 2-5pm
March—10th
at 4248 A St. S.E., Auburn WA
(see back page for map)

REMEMBER: The Bill Churchill Children's Leather Program AWARD Nomination Form for the Year 2002
Send in your **nominations by April 30, 2002**



Proposed Award Medal designed by Dale Buckenberger

Puget Sound Leather Artisans Co-Op

eLeatherSupply.com

The Leathercrafters Online Store

New Sponsor for PSLAC: eLeatherSupply.com

I have the **discount set up for PSLAC** now. Your members will simply put "pslac" (without the quotes) in the coupon number field of the secure checkout to receive a **15% discount** on anything in the store. The discount amount will not appear on the discount line, but the discount will be reflected in the total.

A few notes on our product line and plans if you need it for the article.

We carry a fairly full line of **Leather Factory/Tandy** products along with a few hard to find hardware items from **Weaver Leather** and **Custom Metal Crafters**. We offer wholesale pricing to organizations and businesses, and we now have a print catalog available.

Our goal is to continually add to the line making it a one stop shopping experience for the leather crafter/artisan, and to try to improve the supply chain to get prices down where possible.

Bill

eLeatherSupply.com

**The Leather Crafter's
Online Source**

**http://
www.eleathersupply.com**

**email:
sales@eleathersupply.com**

Ken's Knothole:

CASCADE MOUNTIAN MAN MUZZLELOADING ARMS AND PIONEER CRAFT SHOW...

...is this coming weekend, Saturday and Sunday, **March 9th and 10th**, 9:00am to 5:00pm, at the **King County Fairgrounds in Enumclaw**. Cost is \$3.00 to get in and kids under 12 are free. Any boy or girl scouts that show up in uniform, with their scout leaders, are also in free. The King County Fairgrounds is one mile East of Enumclaw on Hwy 410 and 248th Ave. SE. The show has over 100 vendors with muzzle loading fire arms and parts, trade beads, leather goods, period clothing, art, crafts, books, furs and leathers, all pertaining to the 1700's and early to mid-1800's. There will be demonstrations of wool spinning, blacksmithing, a pre-1840 Period Historic Fashion show, and all the vendors will be dressed in period costumes. If you've never been to this show, it's great entertainment. Most of the Blackpower Rendezvous and WA Brigade people in the area also dress in their gear and come down and make a day of it. Great place to shop for furs, beads, deer and elk skins etc. I'll have a table in the small building, so stop by and say hi if I'm there. I'm often out and about helping out with running the show.

Ken Eriksen



**Toll Free:
(800) 541-3264
Bee Natural
Leather-
care**

*The ultimate in
leather care
products*

P.O. Box 820803, Vancouver, WA. 98682-0018
(360) 891-7178, FAX: (360) 891-7166
Email: bnatura@pacifier.com

SPOTLIGHT on PRO-CARV — Working and Tooling Leather Formulation

DIRECTIONS:

Dilute concentrate with water: 1 part PRO-CARV to 10 parts water is recommended for carving and tooling. When immersing the leather for shaping or forming, add 8 oz. PRO-CARV to 3 gallons of water.

NO CASING IS NECESSARY

Leather can be immersed or sponged with this solution. PRO-CARV eliminates the need to case leather. PRO-CARV allows you to begin working with the leather after immersing for 3-5 minutes because of the very rapid penetration into even the thickest hide. Allow the surface to dry somewhat before beginning forming or carving.

**Contact MacPherson's, Hide Crafters, Goliger's Leather,
and The Leather Factory for any of the fine Bee Natural
Leather products.** *Advertisement*

**Start a Child in
Leathercraft Today**



**Bill Churchill's
Childrens
Leather Program**

*Confidence
Observation
Practice
Imagination*

RawHide Gazette

Editor / Publisher: Bob Stelmack
Co-Founders: Bill Churchill &
General Seymour
Treasurer/Secretary: Jeff Bement

*Copyright © 2002 PSLAC, Puget Sound Leather
Artisans Co-Op*

The *RawHide Gazette* is published monthly (12 times a year). Address for information and correspondence: PSLAC, c/o Jeff Bement, 3942 SW - 329th PL, Federal Way, WA 98023, U.S.A.

email: Jeffbement@aol.com

The *RawHide Gazette* is provided to the Puget Sound Leather Artisans Co-Op as a part of their membership benefits. Annual dues are \$24.00 USD per year.

All submissions are subject to editing for clarity and length. All articles submitted must be accompanied by name, address and permission of writer.

POSTMASTER: Send address changes to PSLAC, c/o Jeff Bement, 3942 SW - 329th PL, Federal Way, WA 98023, U.S.A.

Advertising Rates

The *RawHide Gazette* now offers advertising space to interested parties. Ad spaces are as follows:

- 1/4 Page or Business Card \$60 USD
- 1/2 Page \$110 USD
- 1 Full Page \$200 USD

These rates cover a six month time period. PSLAC members are entitled to a 25% discount. Leather companies supporting PSLAC are given free Business Card size advertisement, additional space at regular rates.



**New Pentel
Metallic Brush
Pens**

Found these little gems in the local Stationery store. They are similar to the **TomBow Brush Pens** that **Bill Churchill** used so very often. These pens are water based acrylic and metallic in sheen. They come in about eight colors, but silver, gold and bronze are shown here. The brush pen has a unique design in the barrel end that allows you to pump up or pressurize the acrylic paint for even coloring. The metallic paint, when dry, can



also be spot burnished, with a cloth, to give special highlights to your project.

Bob Stelmack
Wellington, UK

Brettun's Village Shops
*Offering a 10% discount to the PSLAC
members*

The Leathercraft Store
*Offering a Discount to PSLAC
members*

PSLAC Membership Application

If you know someone who is interested in leathercraft — give them this information:
Puget Sound Leather Artisan Co-Op MEMBERSHIP APPLICATION

YOUR NAME: _____
STREET ADDRESS: _____
CITY, STATE, ZIP: _____
PHONE NUMBER: (____) - _____
E-Mail: _____

Send this form along with \$24.00 (\$10.00 for Internet Membership) your first years dues to:

Jeff Bement
3942 SW - 329TH PL
Federal Way, WA 98023
U.S.A.

*If you would like to subscribe to **The Leather Crafters & Saddlers Journal** through the Co-Op and include an additional \$29.00 for a one year subscription.*

The Bill Churchill Children's Leather Program AWARD Nomination Form for the Year 2002



PSLAC Mission is...

- To further the enjoyment of leather and to help others learn more about the real joy of leather - working as a group and sharing ideas and knowledge of leather, its uses and how to use it. To pass on this knowledge to others and then have them pass it on to the new members who come later.
- Form a fellowship with peers, young and old, expert and non-expert, anyone who has the love of leather.
- To show and demonstrate to people outside the Co-Op leather in all forms and try to help them to become interested in leather...to share...time and talent, with all others in the Co-Op -- especially the young.

The **Bill Churchill Children's Leather Program Award** is designed to recognize PSLAC members who are caring on those principles of the PSLAC mission.

Nominations can be made by any PSLAC member and should be in writing. This form can be used, or any other written method is acceptable.

The nominations should give reasons and examples why they feel the nominee should receive an award.

- How have they helped further the craft?
- Are they active in PSLAC activities?
- Do they help promote leather craft by fair entries, demonstrations, etc.
- Helped generate interest in others to pursue the craft.
- Willing to share knowledge for the benefit of all.

The PSLAC directors would make the decision for each year and the award would be a once in a person's lifetime. The award would include a medal similar to the Stohlman award with a replica of Bill's hands and his axiom: C.O.P.I. (confidence – observation – practice – imagination).

Send your **nominations by April 30, 2002** to:

PSLAC
c/o Jeff Bement
3942 SW - 329th PL
Federal Way, WA 98023
U.S.A.

...or... email to stelmack@nwlinc.com

J & W LeatherCrafters

*Offering a 10% discount to the PSLAC
members*

Trader's

*Stitching Posts at Wholesale
Offering PSLAC Members a Discount*

RULES:

1. The award may only be won once in a lifetime.
2. The Directors will evaluate the nominations and decide on a winner – one each year.
3. If one of the Directors is nominated, that Director will be replaced by another PSLAC member for the purposes of selecting a winning nomination.
4. The award will be give out at the summer PSLAC Annual Bar-B-Que.
5. Nominations will be due by April 30th.

**The Bill Churchill Children's Leather Program
AWARD Nomination Form for the Year 2002
*Give examples for each category:***

Nominee: _____

How have they helped further the craft?

Are they active in PSLAC activities?

Do they help promote leather craft by fair entries, demonstrations, etc.?

Are they willing to share knowledge for the benefit of all?



Peter's Leather Flowers

Here is a composite photo of leather flowers. They are made from extremely thin leather and coloured with spirit dye. I made a bouquet, a headpiece and six corsages. There is a total of 1044 separate pieces making up this wedding arrangement. Don't think I will do this again — far too much time was spent here, but the end result was worth every moment.

To answer some questions:

The flowers (including the buds and small flowers) have separate petals, and are coloured with spirit dye in four steps — light yellow, dark yellow, orange and red.

The leaves have fine wires glued to the back. These wires are covered with coloured strips of fine paper to ensure their permanent attachment. They were cut with a scalpel (a painstaking exercise) and there are four different sizes made. They are coloured in three steps of green.

All the stems of the leaves and flowers were wrapped with leather (dyed green) progressively as the arrangement was being made.

The yellow bow and ribbon is also leather. These are coloured with a light shaded orange at the sides and finished with red edges.

The 'customers' did not pay anything (in dollars??) for the flowers. I think the charge would have been too outrageous for them, and they could not afford it anyway. I will attach a photo of the arrangement in use.

Peter Main

PS -- Julianne made the 14 foot train.



The Leather Factory -- Spokane
*Offering a wholesale discount to the
PSLAC members*

BOEING Surplus Retail Store for the Leather Craftsman

Bill always talked about the great tools, binders and craft items that could be purchased from the **Boeing Surplus Retail Store**.

I recently had the opportunity to purchase, yet another computer, from Boeing Surplus here in England. This reminded me that many of our **PSLAC** members are not "on-line" and are unable to take advantage of the "on-line" opportunities that are available for the leather craftsman. From the Boeing Surplus, I purchased a Dell Desktop, 233 MHz with 32MB memory, 2GB hard drive, CD, floppy drive, keyboard, power cables and 17 inch Dell monitor for \$150. Since I am a great fan of Linux (the operating system that is available for no cost), but it has problems with internal modem -- I opted for an external modem for \$50. So, for a total cost of \$200, I had a complete system with email, Netscape browser, a complete Office Suite and more programs and options than most computer come equipped with.



Dover Drawing

There are graphics programs and Publishing programs -- all came at no cost and freely available from the Internet. (I cheat, and purchase my Linux from RedHat so it come on an easy to install CD. The cost for the CD is \$79 and has hundreds of programs on it.) **So, the real price for a total system was \$279.**

There is a Boeing surplus retail store in the Seattle area and details are provided below. Also, there are several large organizations, such as Power Utilities, Universities, and County, City and State Governments that have surplus sales similar to Boeing's. You can check with General Seymour for some places to check out.

NOW there is no reason NOT to be "on-line".

It is worth the effort just for the clip art you can pick up from the Net News Groups. **Here is a sample Dover copyright free image that would make a great leather carving.**

The Boeing surplus retail store is open to the general public, Tuesday through Friday from 10:00 AM until 5:00 PM* and Saturday from 9:00 AM until 4:00 PM* (*Sales of heavy furniture or other large items stops one hour before store closing.) All sales are final. Sales are on a cash and carry basis with payment accepted in cash, check, or credit/debit card. In addition to furniture, milling cutters, drills, stationary, test equipment, and metal we typically have computers, printers, and peripheral computing equipment.

Currently COMPUTER equipment includes the following:

- Dell Desktops - 133 to 350 MHz
- Dell Laptops - 233 to 300 MHz
- Laser PRINTERS are generally available: starting at \$10 for untested units.

Directions to the Surplus Store:

BOEING Surplus Retail Store
20651 84th Ave S.
Kent Washington
Ph. (425) 393-4065

On I-5:

- 1 Take the Orillia Rd. Exit #152, turn East.
- 2 That is a right turn if North bound, left turn if South bound.
- 3 Follow Orillia Road down the hill. At the bottom of the hill Orillia Road becomes 212th.
- 4 Continue East to 84th Ave. South.
- 5 Turn left at light.
- 6 Turn left at the next light at 208th into our parking lot.

On I-405:

- 1 Take the Highway 167 / Auburn Exit #2.
- 2 Head south taking the 212th St. exit, turn west.
- 3 That is a left turn if North bound, Right if South bound.
- 4 At the light turn right on 84th Ave. South.
- 5 Turn left at the next light at 208th into our parking lot at 20651 84th Ave. South in Kent.

On Highway 167:

- 1 Take the 212th St exit, turn west.
- 2 That is a left turn if North bound, Right if South bound.
- 3 At the light turn right on 84th Ave. South.
- 4 Turn left at the next light at 208th into our parking lot.

Bob Stelmack
Wellington, UK

Belt and Burnish Help

Eons ago, when I was a newbie, my old friend, Hamp Brand, a well known saddlemaker of that era, who ran the first saddlemaking school in this country, showed me how to make a rub rag. He used light weight canvas or heavy duck

material and then took a cake of beeswax and rubbed lots of it into the material, then, he would take a strap and pull it thru the material, to warm the wax, making it go into the material that much more. Then, he would apply more beeswax and repeat the procedure several more times. When he was satisfied with the rag, he would then use it to burnish the edges of saddles or anything else.

I have several of these, that I have had for well over 10 or more years. I keep one for each color of edge dye that I use, that way, I do not stain my edges, should I wish to not use an edge stain and to just get a nice natural burnished edge. This type of edge will take on a nice dark tan to brown color, with enough rubbing.

You might also try this when using the edging tool. Dampen the leather first, then, use the edger. Also, make certain that the cutting edge on the edger is sharp, otherwise, your edge will be ragged, which makes it more difficult to burnish.

Ron Ross

rosaddlery@aol.com

Saddle for This Horse?

I'm a new Member (from Germany) of PSLAC and the **RawHide-Gazette** and I hope you or any other PSLAC Member can help me.

For my hobby I'm carving a Rocking Horse and want to make a western saddle on it.

I'm trying to find a technical drawing for a saddletree western style.

You can see a few pictures of the horse I'm carving now. The size of the horse mounted on the stand is:

1.525m (60") long

1.25m (49") high

0.51m (20") wide

...and 0.94m (34") from the floor to the horse's back.

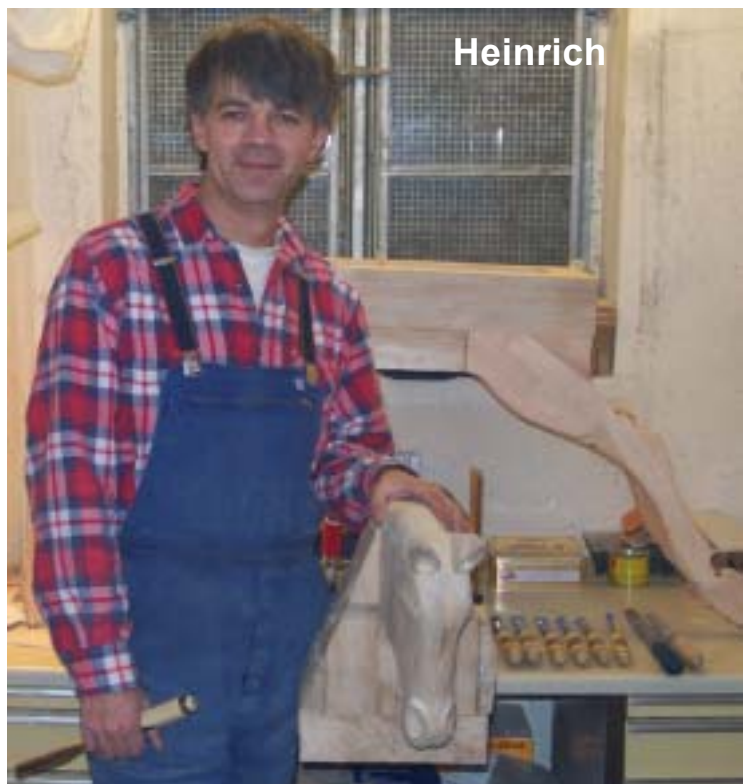
Regards,

Heinrich

Email: Hei.Kla@t-online.de



PLEASANT VALLEY SADDLE SHOP
Offering a 20% discount to the PSLAC members



Sewing Lesson

ed note: Another great piece of information from the IILG leather email list. I strongly recommend that you join the IILG group. To join go to:

<http://iilg.org/>

I need a lesson in sewing. I've just bought a Singer 241-12, and it calls for left twist thread. I know nothing about thread except for what you buy at sewing centers for home machines. Can you all help me out. What does left twist, right twist, Z-69, #207, #277, #346, etc. mean?

And who are some suppliers of all these threads?

Thanks in advance,
Kenya Ray

Hi Kenya,

Will try. I think that you will find most of the synthetic threads to be left twist. This means that, when you look at the end of the thread, the fibers are twisted in a counter clockwise direction. In other words, going to the left.

On natural fiber threads, such as linen or cotton, you will find both the left twist and the right twist threads. On the needle and awl harness stitchers, most call for the use of left twist thread, which is

Hide Crafter Productions
Offers a wholesale discount to PSLAC members

needed in order to keep the stitch tight. If you were to use right twist thread on one of these types of machines, you would find the thread tends to unwind, due to the shuttle action.

Since the natural threads are heavier, you would not be using that type of thread on this machine. Now, on the matter of thread size, synthetic threads come in the following sizes, which the low number being the smallest and the high num-

ber being the heaviest.

- 69 (used on most of the Singer 29-4 or 29K models referred to as Patchers)
- 92 (can be used on this type of machine, plus most others.)
- 138 (Some lighter weight industrial machines will use this.)
- 207 equates to 3 cord natural thread, works well for sewing belts, chaps, etc.
- 277 equates to 4 cord natural thread, works well for sewing horse tack
- 346 equates to 5 cord natural thread, often used on saddles and harness
- 415 equates to 6 cord natural thread, also used on heavy harness, stitch often looks clumsy. Can be used on heavy nylon webbing items such as towing straps
- 554 equates to 8 cord natural thread, extremely heavy, used for sewing towing straps etc., where strength is extremely necessary.

There are lighter weight threads, however, in my opinion, any thread lighter than the number 69 is not suitable for leather.

When selecting thread, be sure to check your operator's manual for the proper needle size to use on your machine. If the needle is smaller in diameter than the suggested size for the thread, you will find that the thread will fray or will be cut, and, if it does sew through the machine, the stitch will not appear satisfactory. Likewise, if you use too large a needle for the thin threads, your stitch will also not be satisfactory.

Also, in connection with the needle size, you must consider the length of the stitch. The smaller the stitch, the smaller needle size as well as thread should be used. For example, you would not want to sew 9 stitches to the inch, using a number 200 needle and size 277 thread. You would have a very coarse appearance, plus, the stitching would tear out under stress as

you would not have enough leather between each stitch. For small stitches, you would, if using the Boss, Aerostitch or

CLPW Leather
10% Discount for PSLAC Members

an Adler 105-64 or similar machine, want to use a number 160 needle and either 138 or 207 thread. For stitch length of 6 to 7 stitches per inch, a size 180 or 200 needle using size 277 thread makes a nice stitch. For stitches of 4 to 5 to the inch, on very thick material, or on the nylons, you want to use the 230 or 250 size needle and size 346 to 554 thread.

I hope that this information is helpful to you, and to others with similar questions.

Ron Ross

Another way of checking needle size is to cut 18 inches, or so, thread the needle and let it hang down while you hold the

HERITAGELEATHERCOMPANY
Offering a 20% discount to PSLAC Members (15% on leather)

thread taught and level. Now tip the thread to about 45 degrees. The needle should slip, slide, slip slide down the thread. If it slides smoothly the needle is too big. If it will not slide the needle is too small.

To get nylon thread, try Rice Corporation at 1-800-765-7423. Great selection, price and service. You will not be able to get this thread at your local sewing place. Hope this helps.

Chuck

Dear Ron,

Okay, I've looked at the manual, and this is what it says:

(the first number will be the size of the needle, the other info is thread recommendations for that needle)

#18——30 to 40 cotton

#19——20 to 30 cotton, or 60 to 80 linen

#21——16 to 20 cotton, or 40 to 60 linen

The thread numbers are referred to differ-

TWLeather, Inc.
*Offering a wholesale discount to the
PSLAC members*

ently here, than what I've been seeing. Do you know what threads these would compare to of the ones you mentioned earlier?

Thanks,
Kenya

Hi Kenya,

According to my thread size chart, which was put out by Rice Thread Company,

MACPHERSON Leather Company
*Offering a 30-40% off retail discount
to the PSLAC members*

those sizes are smaller than size 69. I personally would find those sizes too small for the type of work that I am doing. When making chaps, I use the size 69, which lays well on the work.

Ron Ross

Pilgrim Shoe & Sewing Machine Co. (<http://www.pilgrimshoemachine.com>) has been very helpful to me. They have parts for machines and thread. A man named Harris spent a great deal of time on the phone with me explaining things — he may have thought I was a fool based on my many questions but, if he did, he didn't make me feel like one.

Jon Hershey



Another Book Press?

Well, it looks like I need to find another 12 step group. After collecting five antique sewing machines I now have three antique book presses!

My latest acquisition is a 10 by 15 inch press with brass fittings, pictured above.

Since these book presses weigh close to one hundred pounds each, I need to reduce the number of presses before we return home in February 2003. So, my excess is PSLAC's gain. I have disassembled one book press (pictured here under my work table) and will bring it to a PSLAC meeting (most likely in June) for a raffle. Karen and I figure we can spread the disassembled press into several suitcases to make the trip back to Seattle.

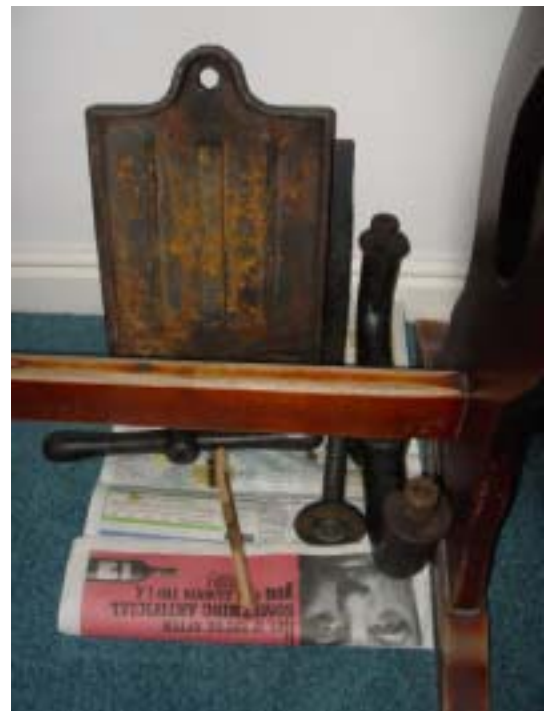
I hope the airport security will understand this luggage with pieces of pig iron in it.

The book presses have cost

around £100 (or about \$140) so it will be a nice prize for the winner.

I find the book press quite a useful leather tool for: embossing, compressing and strengthening leather pieces, and for, strangely enough, making leather bound books and note pads.

Bob Stelmack
Wellington, UK





Batik



Ken Imus' Batik Seminar

Ken Imus gave a "hands-on" demonstration of leather batik. There is a detailed PSLAC article written in January 1998 that gives the written details on Ken's technique. Ask at the meeting if you can get a reprint copy for the cost of duplication and mailing.



- Prepare work surface
- Prepare wax
- Prepare leather
- Apply the heated wax to leather
- Cooling the wax-coated leather
- Cracking the cooled wax to achieve random design pattern through which the dye will seep on to the leather surface
- Applying the dye
- Removing the wax from the leather
- Repeating the 5 previous steps for additional dyeing (2 or 3 color Batiked designs)
- Finishing the Batiked leather surface

See the January 1998 Members Only Issue for complete step-by-step details.

Harry's Happenings...

...at the February Meeting

Boy, **Ken Imus** really put on a great workshop! We all got to batik finish a couple pieces of leather. It is a simple process, yet the results are stunning. You just heat up some wax, paraffin with a bit of beeswax, to approximately 140 degrees, wipe a coat on the grain side of the leather, let it cool in a refrigerator or freezer, create cracks, daub on some dye, and you get these gorgeous patterns along the cracks.

Ken says you can do it up to three times using different colors, which some of us managed to accomplish. You can see some of the examples. For the dozen or so of us that partook, it was a great experience. I will have to knock out a tri-fold using this technique. I loved it.

After we settled down, **Woody** opened the meeting by introducing two new members **Norm Lynds**, and **Paula Marquis**. Norm is getting back into leatherwork. Paula has a shop. She learned the craft in Australia. Her specialties are stock whips and quirts, shoe repair and bookbinding. Paula brought a book in in a slip cover, a three ring binder, a music box that holds pencils with a great Mariners emblem carved on one side, and this interesting scrunch dyed leather that looked not only colorful, but embossed from reaction to the dye.

Then, we got our handouts (homework) for **Rob Barr's class in April**. It is about full, so let **Len Madison** know soon if you want to participate or you will miss out.

Dale showed us a medallion that is the size and shape of our **Bill Churchill Award**. The final design will include **C.O.P.I.**, Confidence, Observation, Practice and Imagination, inscribed above or below the center image. Any student of Bill's will recognize it. **The first award will take place at the June BBQ**. So have your forms submitted by April 30.

Woody reported on a merit badge class he held, and **P.K. Dan** summarized the January 26th **Tumwater Pow Wow for Cub Scout leaders**. She thanked **Len Madison**, **Dave Jensen**, and myself for helping. Dave and I were a little worried. P.K. got there a little after us because of the icy driving conditions. She had the leather. In all, we had about three dozen participants.

Woody will have two kits for demonstrations so we don't have to use our own tools. He will have them for us to see at the June BBQ and flea market.

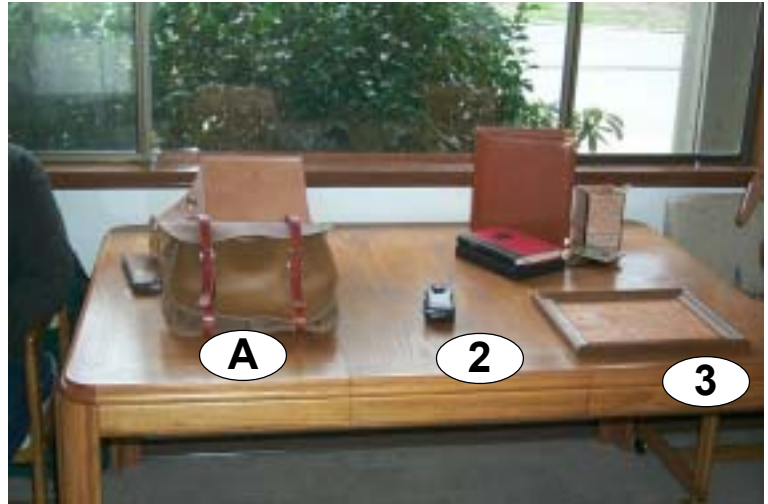
We need authors for **Members Only Articles**. Every one of us, myself included, could write on what we do well that others could benefit from. We need to help **Bob** keep up the quality of our Gazette, which is tops throughout the world. Come on and show off!

Oh yes, while we were meeting and auctioning, our kids were pounding away with General. Watch out. These guys are getting good!

The **March meeting** will have a **demonstration of how we do demonstrations**. In **April**, we will meet at **Macpherson's**. I saw Terry Durbin Saturday, February 16, at the store. He looks good and appears fully recovered. We need a demo for May.

Harry Smith
HSmith9441@aol.com

February Meeting Sharing



A - Show and Tell table
1 - Saddle bags by Phil O'Neal
2 - Cell phone case by Rich Wert
3 - Picture by "Tiny"





Toll Free Order Lines:
1-(888)263-5277
Fax: 1-(888)263-5086

Hide Crafter Productions

Offering wholesale discount to PSLAC members
ON-LINE CATALOG <http://hidecrafter.com>

New Location:
7936 Hwy 80 W
Ft. Worth, TX 76116

George Hurst, Manager
email: hcrafter@flash.net



Leather Factory Spokane

28 West Boone Ave, Spokane, WA 99201
Phone: (509) 328-9939
Toll Free: 1-800-822-8437
Fax: (509) 326-7019

Offering a wholesale discount to the PSLAC members
www.leatherfactory.com



Support our sponsors and take advantage of the PSLAC Membership Discounts

Brettun's Village Shops

302 Lake Street,
Auburn, ME 04210
(207) 782-0861

URL: <http://www.brettunvillage.com>
Email: leather@brettunsvillage.com

Offering a 10% discount to the PSLAC members

Churchill Barton, Manager

Outside Washington
1-800-343-9949

(206) 328-0855
Fax: 328-0859

MACPHERSON

Leather Company

Leather, Shoe Finding and Saddlery

Offering a 30-40% off retail discount to the PSLAC members

519 - 12th Avenue S.
TERRYLEEDURBIN Seattle, Washington 98144

Email: jwleathercrafter@quest.net (503) 293-2833
Fax: 977-1762

J & W Leather Crafters

Leather Repair: Saddles, Tack, Harness, Chaps, anything
Leather except clothing. We make new Items & Custom Orders

<http://www.users.qwest.net/~jnoecker/leather/>

Offering a 10% off retail discount to the PSLAC members

"It never hurts to ask!" 3912 SW Dolph CT
Joseph & Wendy Noecker Portland, Oregon 97219

RawHide Gazette Technical Publication Information

The RawHide Gazette is produced using Adobe PageMaker 6.5. The photos are taken with a variety of digital cameras including the Sony MVC-FD77 (Seattle, USA), and the Sony MVC-FD98 or Sony CD-300 (Wellington, UK). Photos were cropped and retouched with Adobe Photoshop 5.0 and the final Portable Data File (PDF) was created using Adobe Acrobat Distiller 5.0. The pages on the pslac.org web site are created with Homesite 4.0. Dynamic CGI programs on the pslac.org web site are programmed in Perl 5.



Find the Dog

Photos by Dusty Wert

If you want to see **ALL** the pictures that are taken at the **PSLAC meeting**, including those that for space or other reasons don't make it into the **RawHide Gazette**, then read on:

The **rawhide_gazette** group, an email group hosted by Yahoo! Groups, is a free, easy-to-use email group service. **JOIN NOW, IT'S EASY.** Go to the Yahoo! Groups site at:

http://groups.yahoo.com/group/rawhide_gazette/join

Yahoo! Groups makes it easy to participate in email discussions, coordinate events, share photos and files, and more.



Dusty Johnson

PLEASANT VALLEY SADDLE SHOP

1220 S. County Rd. 21
Loveland, CO 80537
Phone: (970) 669-1588
Fax: (970) 669-1589

E-Mail: dusty@pvsaddleshop.com
URL: <http://www.pvsaddleshop.com>

Offering a 20% discount to the PSLAC members

10% Discount for PSLAC Members
Leather Crafts and Supplies
 1482 Madison Ave. Memphis, TN 38104
<http://www.shopforleather.com/>

CLPW Leather

Outside USA 901-728-5551
Inside USA 877-728-5551

Leather Factory



Portland

Durham Hefta
Manager

Phone (503) 255-8818
Fax (503) 255-9011
Toll Free (888) 277-3360
www.leatherfactory.com

13221 N.E. Whitaker Way
Portland, OR 97230-1128

Offering a wholesale discount to the PSLAC members



SKYSHOOTER
(Dave)
(425)823-0110

TRADER'S
Stitching Posts at
Wholesale

SCREAM'N EAGLE
(Mike)
(360)658-1847

HERITAGE LEATHER COMPANY

LEATHER - HORSEHAIR - RAWHIDE
LEATHER TOOLS - BOOKS - VIDEOS
BRAIDING SUPPLIES - CLASSES
COWHIDE RUGS
email: heritageleather@interplus.net

Offering a 20% discount to PSLAC Members (15% on leather)

JoAnne Tackitt
Ph. (208) 375-5589
Fax (208) 375-7168

285 N. Orchard St.
Boise, ID 83706
Hours M-Sat 9-6

The Leather Factory



Billings

Kermit P. Creek
Manager

Phone (406) 256-1355
Fax (406) 256-1360
Toll Free (888) 277-3323
www.leatherfactory.com

115 North 30th Street
Billings, MT 59101-2032

Offering a wholesale discount to the PSLAC members



TWL Leather, Inc.

Toll Free: 1-800-477-9923
2017A White Settlement Rd.
Fort Worth, TX 76107
(817) 877-5427, Fax (817) 877-5432

Offering a wholesale discount to the PSLAC members



THE LEATHERCRAFT STORE

MAIL ORDER & INTERNET SALES
LEATHER HIDES, LEATHERCRAFT SUPPLIES, TOOLS,
KITS, BELTING, BUCKLES, SADDLE & TACK HARDWARE,
NATIVE HERITAGE KITS, LEATHER LACE & MORE!

VISIT US AT

<http://theleathercraftstore.safeshopper.com>

253-226-1150

P.O. Box 4551
Spanaway, WA.
98387-4036

Support our sponsors and take advantage of the PSLAC Membership Discounts

RG On-line

The Puget Sound Leather Artisans Co-Op can be found at:

<http://pslac.org>

If you need the **UserId** and **Password** for the subscription pages, just contact the *Raw Hide Gazette* at:

stelmack@nwlink.com

-- of course the password information is free for the Puget Sound Leather Artisans Co-Op members. Those on the Internet still need send \$10 per year for a membership to:

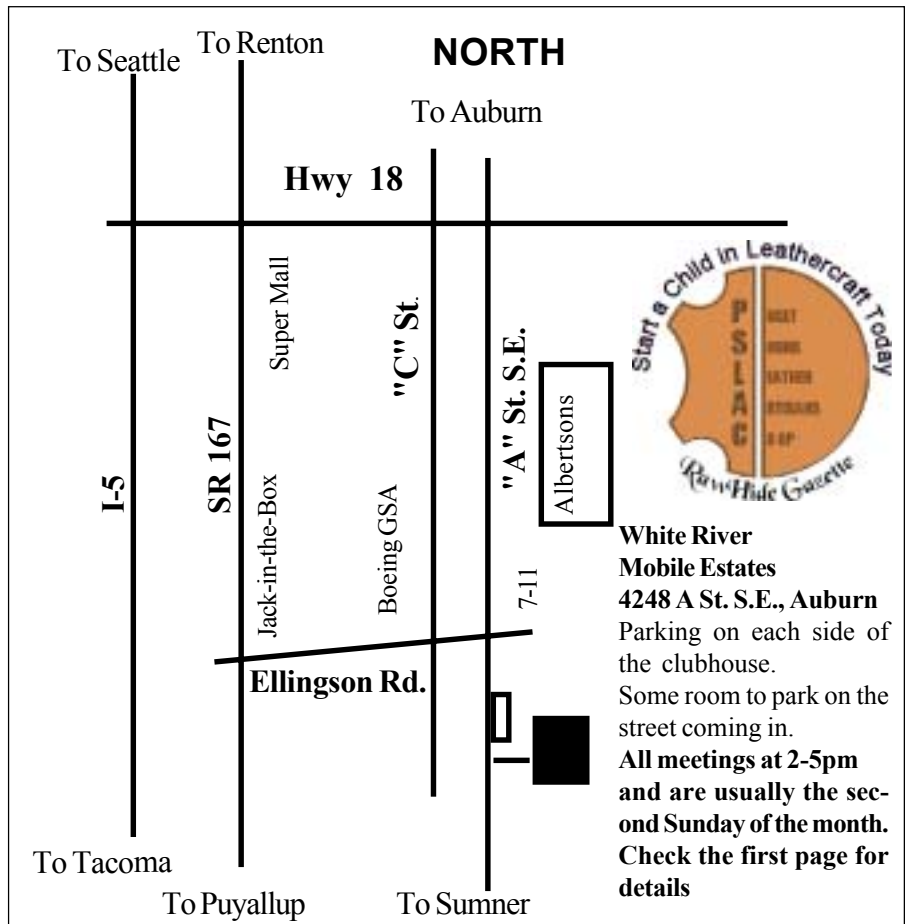
Jeff Bement
3942 SW - 329th PL
Federal Way, WA 98023
U.S.A.

Your Photos here - if you send them to:

Web Editor: Bob Stelmack
7 Memorial Hall Drive
Wellingore LN5 0BD
England

Photos sent in to the PSLAC are used, space and focus permitting.

They are also posted, in living color, on the Internet.



PSLAC

c/o Jeff Bement
3942 SW - 329th PL
Federal Way, WA 98023
U.S.A.

