

RawHide Gazette

Copyright © 2003 by PSLAC, All Rights Reserved

“Without question, the RawHide Gazette is by far the best and most informative and comprehensive Guild publications of all of them! You are to be commended for your very fine and professional efforts. Keep up the good work. With admiration”
/signed/
Al & Ann Stohlman, December

Volume 8, Issue 12

Puget Sound Leather Artisans Co-Op

May 2003

Hide Highlights

Page

- 1 Ken's Knothole
- 1 JUNE MEETING
- 2 Leather Suitcase
- 3 June Bar-B-Que PSLAC Meeting
- 4 Ron Hanlin's Pictures from the Reno Show
- 5 The May Meeting at MacPherson's Leather in Seattle

(Note: No RawHide Gazette in June)



June 15th
at Noon
Don't
miss it!



Leather Garage Sale (Tools, Leather and Craft items), Food and Fun at the June 15th Meeting! Don't miss this meeting.

Meeting Announcement

NEXT MEETING:

Meeting time:

Noon-5pm

June—15th

Meeting at
Issaquah

(see map on back page)

Ken's Knothole

Had a great May meeting at MacPherson's Leather Co. in Seattle, hosted by Greg MacPherson and his daughter, Amber, who has begun working in the craft parts of their business and represents the 6th generation in their family business. She's even learning how to carve and pound on some leather. Greg mentioned that they have a web site up and running and are looking at having their next catalog be totally on-line. Visit them on the web at: www.macphersonleath

[er.com](http://www.macphersonleath.com) As usual, I think most everyone found a few tools, leather scraps, hides, glue, etc. that they couldn't go home without. Our thanks to Greg and Amber.

JUNE MEETING:

June 15th, will be back at our meeting spot in Issaquah (see map at back), and will be our Annual Barbecue/Picnic and Leather-related Yard Sale.

We'll have tables for people to spread their

extra tools, leather, etc. out to sell and the Co-op will provide the burgers, dogs, buns, pop, and condiments, plates for the barbecue. If you want to, bring along your favorite salad or dessert for others to sample. We'll start at 12:00. We will have an award ceremony for the **2nd Annual Bill Churchill Award**, about 2:30 or 3:00.

No formal meetings in July and August, we'll start back up on September 14th, at Issaquah. However, we've talked about getting together during the summer months to work on projects, maybe hold some classes. So we decided on the following:

CLASS in JULY:

Ken Imus will be teaching his modeling techniques on 7/12/02 and 7/13/03, Saturday and Sunday at the Issaquah Senior Activity Center. He'll supply the leather, cost will be \$30.00. I didn't write down the time, but I think we decided on 10am to 5pm. Call or email me for signup: 425-481-9214, redelk1@msn.com

UFO in AUGUST:

That would be Un-Finished Object, as in leather project, possibly to turn in for the display case at the **Puyallup Fair**. We are going to get together at the Issaquah Activity Center on Aug 16th, around 9am to 5pm and bring whatever project you are working, maybe get some tips or ideas from others in the Co-op, or just spend a pleasant day pounding, carving, braiding. We might even order some pizza. By the way, we will be collecting your entries for the **Puyallup Fair** at the June meeting, or the July or August get togethers, or you can drop them off at **MacPherson's** or call me or **General Seymour**. You'll need to fill out the entry form, and leave with the project, in order to allow us to enter it and to pick it up, for you.

Boy Scout Leather Demos:

Roundup: 5-31-03, in Lacey or Olympia, about 25 scouts and **Harry Smith** is heading this up.

Scout Camperee, 5-31-03 and 6-1-03, at the fairgrounds in Enumclaw (? at least that's what my notes say, might be Puyallup?) **Marilyn** and **Jeff** are going to be there. Call me if you want more info to go and help them out.

Here is an email back to Ron Hanlin and Dusty:



Photos by Bob Stelmack

Ron, we did use the stamping tools for the beginnings of a kit for Ken Imus and Len Madson, who are teaching a leather working class to seniors, today (May 5th) as a matter of fact, up in Everett. We were going to try to connect them with PK, to get the Scout's kits, but that didn't happen (yet). I'd brought the box of tools and other stuff you donated to the meeting at MacPherson's on Sunday and Dale offered to go through and inventory them for me and when we heard that Ken's and Len's class was the next day, well, those tools were definitely there at the right time! We'd gotten them some pounding blocks at the last meeting, and they had extra swivel knives and mallets. So we were able to get them set up for the class. Dale will bring the rest to the meeting in June and we'll figure out what to do with them then, class kits, raffle, ? we'll see, but they will be put to good use Ron. And thanks again from the PSLAC group for your generosity.

Ken Eriksen

Leather Suitcase

My latest Antique Fair find is pictured here. I was quite impressed with the solid construction and the corner and handle details. Hum... wonder if I will tackle a project like this?

Bob Stelmack, Wellingore, UK



June Bar-B-Que PSLAC Meeting

(ed. note: Ron Hanlin was planning to attend the June PSLAC Special Bar-B-Que Meeting and asked Dusty some questions. So, Dusty provided the answers.)

Dusty

This is Ron from down in Roseburg, Oregon. We want to plan a trip to come to the Bar-B-Que. It's hard to come up for the meetings but we want to make the trip. It is about a 8 hour trip for us.

(Gee it takes us only 2 1/2 hours to get to Issaquah and Bob the editor it takes 12 hours by 747.)

What food items do we need to bring?

(Bring anything you would like but since you are so far away—bring some chips and dip or buy a fruit tray or veggie tray at Safeway or the likes. Or if your wife makes a great salad or casserole and you can get it up here.... oh that is too much trouble just go to a super market and make it easy on you and her.)

Time and Place to be held?

The place is at Issaquah and the map in the Rawhide Gazette is good. I think the time for garage sale is at noon, the award is about 1:30 PM and BBQ is about 2:00 PM Plus go to Map Quest and pop in the address they will tell you how to get there, plus all of the exit numbers, etc.

What is the Leather-Related Garage Sale?

You gave away all the stuff that you could have sold, at the garage sale all leather related things. Or maybe you want to buy some swell stuff. The tables are there to put your stuff on and you sell your stuff for whatever you want and keep all the money. It is a fun thing to do. I get to play Tandy Leather Clerk all over again.

We want to donate one more item to the Co-op that we will bring up to the Bar-B-Que a used wooden Stitching Horse that was purchased from Weaver Leather)

Great! That was wonderful tools that you sent to me and I brought it up to the meeting and Ken one of the directors took it home to figure what the Co-op was going to do with it. Some of the tools were going to the kids program and who knows maybe the Co-op is going to sell some of the tools at the garage sale. Then they can buy more leather for the

demos for scouts and the fair.

We got to go to the Reno Trade Show and have some pictures we would like to share, they are not digital just snap shots. Should we send them to you?

You could send them to me and I could scan them and then e-mail them to Bob. Then I could give them back to you when I see you at the "Garage sale / BBQ."

Mail them to:

Dusty Wert



Dusty, how are you at being a travel agent? We will have one day in Seattle with our daughter who is 8 years old. What would you suggest as a must see thing to do or see?

I have good idea's to what to see in Seattle. Hang on to your hat this is going to be good:

1. Go to Seattle Center and go up the Space Needle and see all of Seattle, mountains and Puget Sound. They also have rides for the kids.
2. There is the Woodland Park Zoo.
3. Pike Place Market. (it is a farmers market started before the turn of the century)
4. Take a trip on a ferry to Bainbridge Island or a longer trip to Bremerton from Seattle. See the Navy Yard where some of the ships coming from Iraq are stationed. You will see the Navy Yard from the ferry and you can just walk on and then ride back to Seattle. Bremerton can be interesting but the trip to and from is wonderful. It takes an hour one way.
5. Just walking along the waterfront is interesting with shops and restaurants you might take a tour on the water in a boat.

We like to stay at the Marriott at Sea-Tac by the airport. They have nice rooms to where you can see the area on one side or you can have pool side. The pool is popular with the

TWLeather, Inc.

Offering a wholesale discount to the PSLAC members

kids and the Hot Tub is popular with the adults. We have stayed there many times and always have a good time. The pool side can be noisy if kids get in the pool and there voices echoes like crazy.

I hope this helps you out. I am sure you can't do it all, but pop on the web and put in Seattle see what you come up with and Washington State ferry. Let me know if I can help you.

Thanks for all your help.

Ron, Judy, & Molly Hanlin

The following page have some of the pictures we took at the **2003 Western Leatherworkers Tradeshow in Reno, Nevada.**

The hotel was so big it had 7 restaurants including a upscale smorgasbord. We were set for a wonderful weekend of leathercraft instruction, Leather Trade Show and All You Can Eat Buffet.

My wife Judy did her first leather project, covering a wooden picture frame with leather class taught by **Dale Grabaski**. She did a wonderful job on her frame and wants to complete it by putting in a beveled mirror.

I took two classes with **Al Gould** the first on **Floral Pattern Layout** and the second was on **Swivel Knife Designs**. What a "Master of the Swivel Knife". Two four hour classes filled with a lifetime of his knowledge he freely shares. I came away encouraged to keep practicing and to improve with each new project.

The Trade Show was a highlight for me, tools tools and more tools. **Can anyone have too many tools?** Judy got to meet **George Hurst** after watching countless hours of **Hidecrafters Video Productions** at home. We had a wonderful time and look forward to the next opportunity to attend.

The Leather Factory

Offering a wholesale discount



Photos by Ron Hanlin



Ron Hanlin's Pictures from the Reno Show

2003 Western Leatherworkers Tradeshow in Reno, Nevada

held at the Reno Hilton

1 - George and Jane Hurst with Judy

2 - Ron and Judy Hanlin

3 - Al Gould Class at the Reno Show

4 - Ron and Judy with Dot Reis

5 - Ron and David Reis

ronhanlin@hotmail.com

Ron & Judy Hanlin

Roseburg, Oregon





Photos by Ken Eriksen

The May Meeting at MacPherson's Leather in Seattle

1 - Greg MacPherson introducing his daughter Amber who is now working with him, helping with the craft side of their business.

2 - PSLAC group at the meet-



PLEASANT VALLEY SADDLE SHOP

Offering 20% discount to PSLAC members



1 - General looking at a partially tanned hide brought in by Leanne.

2 - Practice Celtic knotwork pieces, by General

CLPW Leather

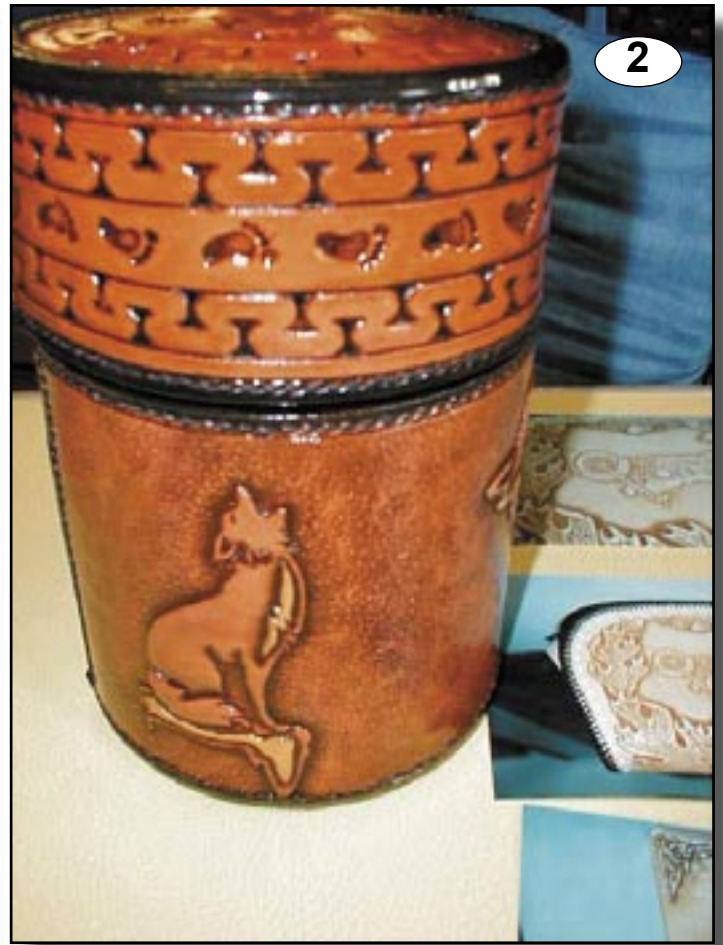
10% Discount for PSLAC Members

Brettun's Village Shops

10% discount to the PSLAC members

Photos by Ken Eriksen





Photos by Ken Eriksen

- 1 - Round leather container, by Paula Marquis
- 2 - Another round leather container by Paula
- 3 - A book cover, by General Seymour



HERITAGE LEATHER COMPANY

Offering a 20% discount to PSLAC Members (15% on leather)

Hide Crafter Productions

Offers a wholesale discount to PSLAC members

1



The Leathercraft Store
Offering a Discount to PSLAC members

Tandy Leather Company
Offering a wholesale discount

1 - 3D modeled scene by Ken Imus

RG On-line

The Puget Sound Leather Artisans Co-Op can be found at:

<http://pslac.org>

If you need the **UserId** and **Password** for the subscription pages, just contact the **Raw-Hide Gazette** at:

stelmack@nwlinc.com

-- of course the password information is free for the Puget Sound Leather Artisans Co-Op members. Those on the Internet still need send \$10 per year for a membership to:

Jeff Bement
3942 SW - 329th PL
Federal Way, WA 98023
U.S.A.

Your Photos here - if you send them to:

Web Editor: Bob Stelmack
7 Memorial Hall Drive
Wellingore LN5 OBD
England

Photos sent in to the PSLAC are used, space and focus permitting.

They are also posted, in living color, on the Internet.



Toll Free:
(800) 541-3264
**Bee Natural
Leather-
care**

*The ultimate in
leather care prod-
ucts*

P.O. Box 820803, Vancouver, WA. 98682-0018
(360) 891-7178 , FAX: (360) 891-7166
Email: bnatura@pacifier.com

**SPOTLIGHT on PRO-CARV — Working and Tooling Leather
Formulation**

DIRECTIONS:

Dilute concentrate with water: 1 part PRO-CARV to 10 parts water is recommended for carving and tooling. When immersing the leather for shaping or forming, add 8 oz. PRO-CARV to 3 gallons of water.

NO CASING IS NECESSARY

Leather can be immersed or sponged with this solution. PRO-CARV eliminates the need to case leather. PRO-CARV allows you to begin working with the leather after immersing for 3-5 minutes because of the very rapid penetration into even the thickest hide. Allow the surface to dry somewhat before beginning forming or carving.

**Contact MacPherson's, Hide Crafters, Goliger's
Leather, and The Leather Factory for any of the fine
Bee Natural Leather products.**

Advertisement

**Start a Child in
Leathercraft Today**



**Bill Churchill's
Childrens Leather
Program**

*Confidence
Observation
Practice
Imagination*

RawHide Gazette

Editor / Publisher: Bob Stelmack
Co-Founders: Bill Churchill & Gen-
eral Seymour
Treasurer/Secretary: Jeff Bement

**Copyright © 2002 PSLAC, Puget Sound Leather
Artisans Co-Op**

The **RawHide Gazette** is published monthly (12
times a year). Address for information and corre-
spondence: PSLAC, c/o Jeff Bement , 3942 SW
- 329th PL, Federal Way, WA 98023, U.S.A.

email: Jeffbement@aol.com

The **RawHide Gazette** is provided to the Puget
Sound Leather Artisans Co-Op as a part of their
membership benefits. Annual dues are \$24.00
USD per year.

All submissions are subject to editing for clarity and
length. All articles submitted must be accompanied
by name, address and permission of writer.

POSTMASTER: Send address changes to
PSLAC, c/o Jeff Bement , 3942 SW - 329th PL.,
Federal Way, WA 98023, U.S.A.

Advertising Rates

The **RawHide Gazette** now offers advertising space
to interested parties. Ad spaces are as follows:

1/4 Page or Business Card \$60 USD
1/2 Page \$110 USD
1 Full Page \$200 USD

These rates cover a six month time period. PSLAC
members are entitled to a 25% discount. Leather
companies supporting PSLAC are given free
Business Card size advertisement, additional space
at regular rates.



Toll Free Order Lines:
1-(888) 263-5277
Fax: 1-(888) 263-5086

Hide Crafter Leathercraft

Offering wholesale discount to PSLAC members
ON-LINE CATALOG www.hidecrafter.com

7936 Camp Bowie West
Ft. Worth, TX 76116

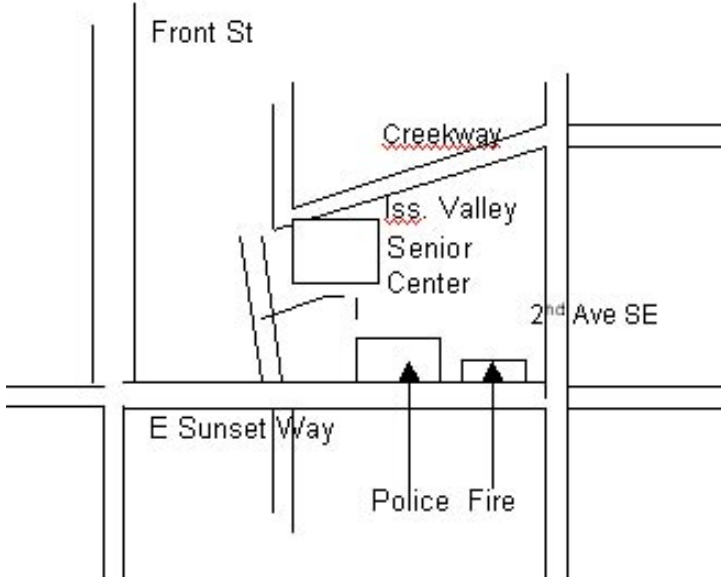
George Hurst, Manager
email: hcrafter@flash.net



Leather Factory Spokane

28 West Boone Ave, Spokane, WA 99201
Phone: (509) 328-9939
Toll Free: 1-800-822-8437
Fax: (509) 326-7019

Offering a wholesale discount to the PSLAC members
www.leatherfactory.com



Support our sponsors and take advantage
of the PSLAC Membership Discounts

Outside Washington
1-800-343-9949

(206) 328-0855
Fax: 328-0859

MACPHERSON

Leather Company

Leather, Shoe Finding and Saddlery

Offering a 30-40% off retail discount to the PSLAC members

519 - 12th Avenue S.
Seattle, Washington 98144
Greg MacPherson

Brettun's Village Shops

302 Lake Street,
Auburn, ME 04210
(207) 782-0861

URL: <http://www.brettunvillage.com>
Email: leather@brettunvillage.com

Offering a 10% discount to the PSLAC members

Churchill Barton, Manager

PSLAC Puget Sound Leather Artisans
Co-op Home of the RawHide Gazette
<http://pslac.org/>

PSLAC Membership Application

If you know someone who is interested in leathercraft — give them this information:
Puget Sound Leather Artisan Co-Op MEMBERSHIP APPLICATION

YOUR NAME: _____
STREET ADDRESS: _____
CITY, STATE, ZIP: _____
PHONE NUMBER: (____)____-_____
E-Mail: _____

Send this form along with \$24.00 (\$10.00 for Internet Membership) your first years dues to:

Jeff Bement
3942 SW - 329TH PL
Federal Way, WA 98023
U.S.A.

If you would like to subscribe to The Leather Crafters & Saddlers Journal through the Co-Op and include an additional \$29.00 for a one year subscription.

RawHide Gazette Technical Publication Information

The RawHide Gazette is produced using Adobe InDesign 2.0. The photos are taken with a variety of digital cameras including the Sony MVC-FD77 (Seattle, USA), and the Sony MVC-FD98 or Sony CD-300 (Wellingore, UK). Photos were cropped and retouched with Adobe Photoshop 5.0 and the final Portable Data File (PDF) was created using Adobe InDesign 2.0. The pages on the pslac.org web site are created with Homesite 4.0. Dynamic CGI programs on the pslac.org web site are programmed in Perl 5.006



Dusty Johnson

PLEASANT VALLEY SADDLE SHOP
1220 S. County Rd. 21
Loveland, CO 80537
Phone: (970) 669-1588
Fax: (970) 669-1589
E-Mail: dusty@pvsaddleshop.com
URL: <http://www.pvsaddleshop.com>

Offering a 20% discount to the PSLAC members



CLPW Leather
Outside USA 901-728-5551
Inside USA 877-728-5551 TM

Leather

10% Discount for PSLAC Members

Leather Crafts and Supplies

1482 Madison Ave. Memphis, TN 38104
<http://www.shopforleather.com/>

Leather Factory

Durham Hefta
Manager



Portland

Phone (503) 255-8818
Fax (503) 255-9011
Toll Free (888) 277-3360
www.leatherfactory.com

13221 N.E. Whitaker Way
Portland, OR 97230-1128

Offering a wholesale discount to the PSLAC members





SKYSHOOTER
(Dave)
(425)823-0110

TRADER'S
Stitching Posts at
Wholesale

SCREAM'N EAGLE
(Mike)
(360)658-1847

Tandy Leather Boise

JoAnne Tackitt, Manager
285 N. Orchard St.
Boise, ID 83706



Toll Free:
1-800-930-2850
(ph. 208-375-5589. Fax. 208-375-7168)

<http://www.tandy-leather.com>

Offering a wholesale discount to the PSLAC members

The Leather Factory

Kermit P. Creek
Manager



Billings

Phone (406) 256-1355
Fax (406) 256-1360
Toll Free (888) 277-3323
www.leatherfactory.com

115 North 30th Street
Billings, MT 59101-2032

Offering a wholesale discount to the PSLAC members



TWLeather, Inc.

Toll Free: 1-800-477-9923
2017A White Settlement Rd.
Fort Worth, TX 76107
(817) 877-5427, Fax (817) 877-5432

Offering a wholesale discount to the PSLAC members

Tandy Leather

Jim Linnell
Director of Operations



Toll Free:
1-888-890-1611

<http://www.tandy-leather.com>

Offering a wholesale discount to the PSLAC members



THE LEATHERCRAFT STORE

MAIL ORDER & INTERNET SALES
LEATHER HIDES, LEATHERCRAFT SUPPLIES, TOOLS,
KITS, BELTING, BUCKLES, SADDLE & TACK HARDWARE,
NATIVE HERITAGE KITS, LEATHER LACE & MORE!

VISIT US AT
<http://theleathercraftstore.safeshopper.com>

253-228-1150

P.O. Box 4551
Spanaway, WA.
98387-4036

Email: jwleathercrafter@quest.net

(503) 293-2833

Fax: 977-1762

J & W

Leather Crafters

Leather Repair: Saddles, Tack, Harness, Chaps, anything
Leather except clothing. We make new Items & Custom Orders

<http://www.users.qwest.net/~jnoecker/leather/>

Offering a 10% off retail discount to the PSLAC members

"It never hurts to ask!"

Joseph & Wendy Noecker

3912 SW Dolph CT

Portland, Oregon 97219

Taking I-90

From Auburn: come north on Hwy167, or I-5, then I-405 north, then onto I-90, going east:

From Everett: South on I-5 to 405 South, or to I-90, going east:

From I-90 get off on exit 17/Front St., and bear right onto Front Street. At the third stoplight, turn left onto E Sunset Way, then see below:

Taking Hwy 18 from around Auburn to Issaquah

Get on Hwy 18 going East, from Auburn, it's about 12 miles to Maple Valley, then at about 2 ½ miles after Maple Valley, look for the turn off to Issaquah Hobart Rd SE, turn onto ramp 276th Ave SE and go 0.6 miles, bear left onto Issaquah Hobart Rd SE. It's about 8 ½ miles from there to Issaquah. Hobart becomes Front Street S, which takes you into downtown Issaquah. Turn right onto E Sunset Way, then see below:



After turning onto E Sunset Way:

go two blocks (past the Police and Fire Stations), turn left onto 2nd Ave SE, go past the old Senior Center building on your left, and a baseball field, then left onto NE Creekway, go almost to the railroad tracks. The new Issaquah Valley Senior Center is a brick building on your left, parking in front of it. There is also parking behind, from Sunset, turn left into the parking area, right before the Police Station (look for a large parking sign on your left), and follow it till you see a kids play ground. Tiny and I couldn't get in to see inside, but it's a brand new building and looks to have a great, large meeting room area and a couple of medium sized side rooms, one set up for crafts. Address: 75 NE Creekway, Issaquah, WA 98027 (*see another page for a detailed map of the building area*)

PSLAC

c/o Jeff Bement
3942 SW - 329th PL
Federal Way, WA 98023
U.S.A.

