

Raw Hide Gazette

Copyright © 2003 by PSLAC, All Rights Reserved

“Without question, the Raw Hide Gazette is by far the best and most informative and comprehensive Guild publications of all of them! You are to be commended for your very fine and professional efforts. Keep up the good work. With admiration”
/signed/
Al & Ann Stohlman, December

Volume 9, Issue 1

Puget Sound Leather Artisans Co-Op

June 2003

Hide Highlights

Page

- 1 Bill Churchill Award Winner for 2003
- 2 Cub Scout Spring Roundup
- 2 Bob Beard August Class in Spokane
- 2 North Idaho Notes
- 3 Reflections:
- 5 Special Guest from Hide Crafters—Andy Stasiak
- 6 Cub Scout Day Camp
- 8 Books on Saddlery By Verlane Desgrange
- 10 From the Dusty Work Bench: Paula’s Desert
- 11 The Stitching Pony Donation



Bill Churchill Award Winner for 2003

Bob Stelmack was the winner of the Bill Churchill Award for this year. Bob was presented with the award by Woody Collins -- last years winner.

The **Bill Churchill Children’s Leather Program Award** is designed to recognize PSLAC members who are carrying on these principles of the PSLAC mission:

- To further the enjoyment of leather and to help others learn more about the real joy of leather - working as a group and sharing ideas and knowledge of leather, its uses and how to use it. To pass on this knowledge to others and then have them pass it on to the new members who come later.
- Form a fellowship with peers, young and old, expert and non-

Meeting Announcement

NEXT MEETING:

**Summer Break
(see you in
September)**



expert, anyone who has the love of leather.

- To show and demonstrate to people outside the Co-Op leather in all forms and try to help them to become interested in leather...to share...time and talent, with all others in the Co-Op -- especially the young.

Congratulations to Bob Stelmack!

Cub Scout Spring Round-up

Fellow PSLAC Members,

I wanted to thank you once again for the time you took and efforts you made to help **Pack 215** with its **Spring Roundup**. The boys had a great time and some of them are still talking about it! It was truly a pleasure to have such great folks come down and spend time with them. Thanks again, and I look forward to working with you on a similar activity in the Fall.

Sincerely,

Bill Fishburn

Cubmaster, Pack 215

Lacey WA

Email: rwfishbu@attbi.com

Bob Beard August Class in Spokane

World renowned artist and tool maker **Bob Beard** is coming to **Spokane** on **August 8th-10th**. That's a Friday, Saturday, and Sunday. The first two days will be a fig-

ure carving class of an elk in a woodland scene. This is a great beginner carving because you'll learn techniques to do all of the important figure carving elements. You don't have to have any experience to take the class, but I'll guarantee that you'll learn a lot no matter what level you are at. Sunday will be an optional coloring segment.

Cost for the classes: Carving (2 day) \$200. Coloring (1 day) \$75 You may elect to take either or both classes. We have to have eight folks paid for in advance to get Bob here. Sign up with **Kevan White** at **The Leather Factory in Spokane**, or contact **David Torix** (208) 457-8215 (davet@digitprod.com) for all the class information or to reserve a seat. Knowing how well Bob is regarded, you'll want to sign up quickly. We only have fifteen seats in the class.

North Idaho Notes

Woody Collins of the **Washington/Idaho Leather Artisans Co-Op (WILCO)** and former director of **PSLAC**, was approached by the administration of **John Brown Elementary** school in **Rathdrum, Idaho** to do a leather craft project with the students. I'll tell you, his experience with the PSLAC folks really shined through. But that's getting ahead of myself. After much discussion it was decided to do bookmarks with 3-d stamps for the students as part of a historical events week. The spotlight was on Western Arts, and the era of the cowboys and the old west. Of course leather work fit that theme nicely.

The school bought two sides of leather and **Woody** and **Jackie Holliday** cut it into bookmark size strips. That's a LOT of cowhide to cut into six-inch strips. Then they pre-cased the leather for the kids. On Monday morning we showed up with stones, a selection of 3-d stamps, and mallets. Jackie Holliday, Woody Collins, David Torix, and several parents were there to help. On Tuesday Jackie's son Pat also skipped school to help out. He was a finish spreading demon.

There was a constant parade of kids and teachers through the gym. Each class was given a quick instructional speech, then we went to pounding cowhide. Woody, who has a lot of experience with these kinds of demos, suggested using a small selection of five 3-d stamps. You know how kids are

when there are too many choices. We had enough equipment and helping hands for five or six stamping stations, three with letter stamps to put in initials, and a finishing station. Two stamps and a few initials, then move on down to the finishing station. We used **Bee Natural Leather Finish** since it is non-toxic and dries quickly.

Two days, 468 students, and a couple dozen teachers later we were one scarred and bruised bunch of volunteers. Another trick of Woody's is to have the child put their hand over the helper's on the hefty handle. It's amazing how the mallet aim improves when it's their hand in danger!

On Thursday night we were back for their school carnival. Typical of most school carnivals the kids bought tickets for a quarter and used those to do an activity. For one ticket they got to make a bookmark or coaster (rounder), with 3-d stamps and border stamps. We figured we could be a bit more elaborate since there shouldn't be too many kids there, right? More famous last words that would come back to haunt us. We did get a nice chicken dinner out of the deal though.

We had three stations this time, with the help of one of the teachers. The carnival was supposed to run 5:30 to 7pm. We finally closed the door at 7:30 and were lucky to finish up by 8pm. I didn't think they were ever going to stop coming in. When the debris was cleared, we had one small handful (probably no more than two dozen) book marks left. **Kevan White, manager at the Spokane Leather Factory had donated a paper sack full of rounders**. We had less than 1/4 of them left. We figured there must have been over 120 people through our room, most buying multiple pieces. The school said we were the big hit of the week and the students are still talking about making something with leather.

The moral of the story, if even one or two of those kids goes on to make leather work a hobby or career, it was a cheap price to pay. Unless we get more new people into the craft it is going to disappear. To that end we'll be doing more of these demos in the future. If you'd like to help, or if you have a group that would like to do an interactive demo, let someone know.

David Torix
WILCO Chairman

From left to right: “Mama”, René, Zinnia, Isis, Kerry, Gerda and Shun having fun in this photo session.



Reflections:

The first travelling group exhibition of leather art by René Berends

This exhibition blurs the fuzzy borders even further between fine art and artistic craft in leather.

It is impossible to draw a distinct line between fine art and decorative art on one side, and applied art or artistic craft on the other side. René Berends, leather artist, president of the globally operating “leather ART forum” and organizer of this exhibition, does not agree with a (mostly) arrogant and pseudo intellectual categorization of art. With the exhibition “REFLECTIONS” he has managed again to set up a diverse collection of high quality artwork by 18 leather artists from 4 continents. (See list of artists) This show will be “on the road” for a long time, giving the public the chance to see that leather is the most versatile material existing.

Throughout history, leather has had a protective and functional image and has been frowned upon as a medium for fine art work. Ceramists have been faced with a similar challenge in the recent past.

Because of the fact that there are some brilliant leather artists at present, who have taken this material in a completely different direction, it is René Berends’ big concern to present different leather artists and attract the attention of the public to this form of art.

Some of the artists are now getting more and more recognition because museums, private collectors and institutions are buying their work.

In this exhibition, viewers express very divergent reactions to the items on display.



The colourful masks by Mike Taylor (Australia) and “Cuir Bouilli” objects by Rex Lingwood (Canada).

Whether they love it or do not like it, at least they will not forget it.

The decorative and colourful leather masks by Mike Taylor from Australia and Canadian Rex Lingwood’s “cuir bouilli” sculptural works contrast with the abstract artwork by Lithuanian artist Dalia Maria Saulauskaite and José Bernardo from Mexico. Also the

TWLeather, Inc.

Offering a wholesale discount to the PSLAC members

provocative, surrealistic and social-critical sculptures by René Berends, Geert de Bruijn’s abstract sculpture seemingly conflicting with the realistic miniaturized sculptures by Dwan an Kuo, winner of several prestigious awards in Taiwan.

Are the playable leather musical instruments by Australian Garry Greenwood, or the asymmetrical boxes with set stones by Todd Barber and complex wall piece by Joe Barth (both USA) in conflict with the simplicity of Hans Kimmel’s creations or the archaic appearing items by Gerda v/d Stroom and Lova Rimini’s fantasy costume?

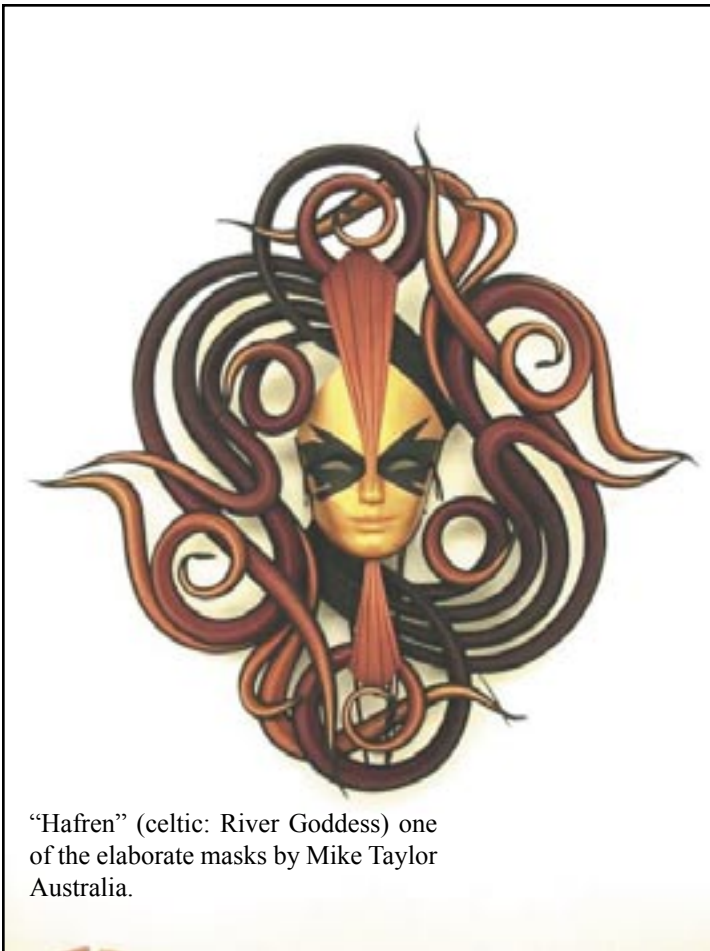
All this, plus the beautifully detailed work executed by the Taiwanese ladies Zinnia Hsu, Zoe Hsu, Sherry Lee and Sabina Tung and the artistic book bindings of Lithuanian Albinas Kavalinauskas combined in one exhibition?

Yes, there is a lot of contrast, but no, there is definitely no contradiction or conflict in this exhibition. One only moves from one

surprising work of art to another, works complementing each other and making the spectator wonder about the versatility of leather and the diverse abilities of their creators. A very interesting exhibition indeed!

The Leather Factory

Offering a wholesale discount



“Hafren” (celtic: River Goddess) one of the elaborate masks by Mike Taylor Australia.

The start was made on the three day event of the “2nd Oberhachinger Ledertage” on Friday, April 11-13 in the Urbs Generationum in Oberhaching near Munich, Germany,

with the support and sponsoring of the local cultural association. Zinnia Hsu and her Taiwanese group, Gerda v/d Stroom and Hans Kimmel from Holland arrived a few days beforehand to help with the set up.

The exhibition was supplemented by an extensive programme including demonstrations of various ways of decorating leather by Herbert Schmid and Helmut Abbel. Their demonstration bench was besieged by an interested audience at all times.

Hans Kimmel led the workshops with children and it was a real joy to see the

fanatic way the youngsters tried out tooling key fobs or wristbands.

A slide show by René Berends on historical leatherwork, gave the viewers an insight of how leather has been applied throughout the centuries.

On April 18 and 19 the exhibition was set up in the Dutch Leather and Shoe Museum in Waalwijk, Netherlands, where it will be on display for two months. At the same time, Gerda v/d Stroom had organized a 2-day seminar with Dutch artist Geert de Bruijn. This turned out to be a very interesting workshop on developing the student’s creativity and using leather for modern and abstract work.

On Monday, April 21, the official opening of the exhibition coincided, as planned, with “the meeting of leather friends”, a “get together” to exchange ideas and to find inspiration, arranged by Gerda every year.

René Berends presented a slide show, which Zinnia had brought with her, of Taiwanese leather artists and their incredible sculptural leatherwork.

Director Dr. Wim Blok led a guided tour of “Contemporary Leather Art” and the “Golden Leather” collections in the museum. He stated that the exhibition “Reflections” comprised the highest level of leather art he had ever been confronted with.

Following the two months period in the Netherlands, the exhibition will return to Germany in the gallery “Kunsttreff” in Otobrunn and after that it will be on show in Paehl.

Several institutions in Germany and abroad have now shown interest in the exhibition. “It is absolutely fantastic to meet with this kind of support and co-operation from individual artists, friends and institutions alike”, says René Berends. “This inspires me to carry on with my mission, to help leather make the break-through it deserves into the art world.”



“Dos Equis”, A mirror reflecting leather by Joe Barth.

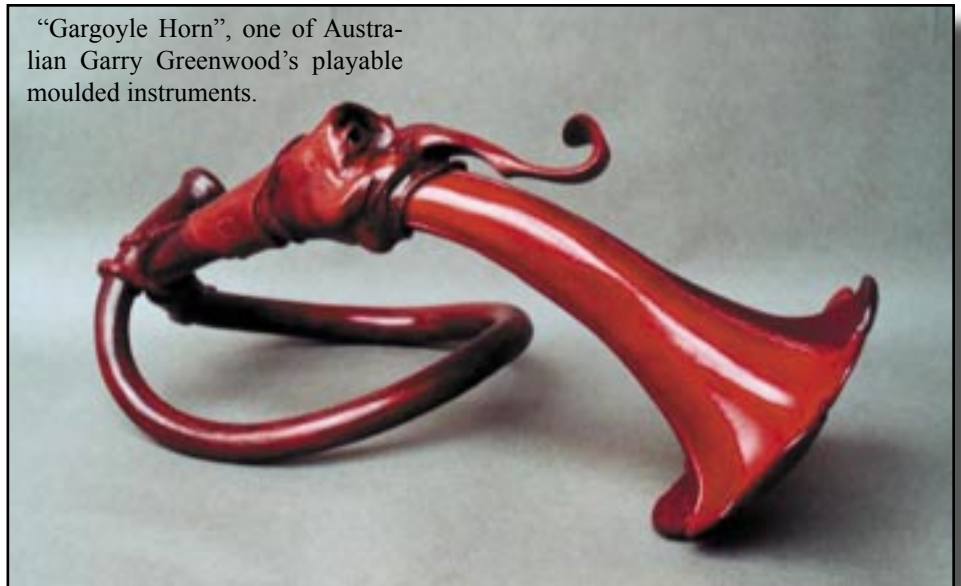


“The Cello Player”, a fascinating example of minute detailing by Taiwanese Dwan an Kuo.

List of participating artists:

Todd Barber (USA)
Joe Barth (USA)
Hans Kimmel (NL)
Gerda v/d Stroom (NL)
Geert de Bruijn (NL)
Rex Lingwood (Can)
José Bernardo (Mex)
Garry Greenwood (Aust)
Mike Taylor (Aust)
Dalia Maria Saulauskaite (Lit)
Albinas Kavalinauskas (Lit)
Zinnia Hsu (ROC)
Zoe Hsu (ROC)
Sherry Lee (ROC)
Sabina Ling-Lan Tung (ROC)
Dwan An Kuo (ROC)
Lova Rimini (Ger)
René Berends (Ger)

“Gargoyle Horn”, one of Australian Garry Greenwood’s playable moulded instruments.



The decorative staff of the “Guardian of the Moon” costume by Lova Rimini from Germany.



**Special Guest from Hide Crafters—
Andy Stasiak**

As charter member of the PSLAC group and the previous editor of the RawHide Gazette, Andy Stasiak was here in Seattle, all the way from Texas. He brought with him the thanks from George Hurst for all the business from PSLAC and donated some leather patterns for the raffle. Andy was showing off his tan from the Texas sun. Most of the Seattleites often mistake this for rust.

**PLEASANT VALLEY SADDLE
SHOP**
*Offering 20% discount to PSLAC
members*

Hide Crafter Productions
*Offers a wholesale discount to
PSLAC members*

Cub Scout Day Camp

Hi all,

This is the Scout Skills Leatherwork sessions at the **Pacific Harbors Cub Scout Day Camp** held on June 23rd.

These pictures are the first day of leatherwork (Scout Skills) with Pacific Harbors Council Cub Scout Day Camp. The event took place at Pierce County Fair Grounds in Graham, WA. There are more sessions for PSLAC July 7th & 14th doing this same program with other groups. I will get another set of pictures July 14th but will miss the July 7th session. Dusty has the names of all the PSLAC workers.

The workshop went with Cub groups on a rotating schedule from 9:00 to 3:30. We had a work time of 40-45 minutes usually. The smallest group was 8 or 9 kids. The larger groups numbered three times that. **Len Madison** did the tool demos to start the group 'pounding' while **Dusty** showed various leather skins to the other participants and played a game to identify the animals. There were twelve pounding stations with 4-5 tools at each place. The kids decorated a mushroom key chain and a bookmark. A rivet held the mushroom shaped leather piece to its split ring. We saw some backpacks go out with new mushroom 'zipper pulls' attached and Cubs with a grin and a feeling of accomplishment.

A Scouter Mom (**Corrie Schibig**) and her Boy Scout son were assigned to help us all day. It was wonderful to have the help of someone knowing this group.

Everyone had a good time and the feedback I heard was very complimentary.

An extra big thanks to Corrie and her son for their help today!

Debbie Evans:

Email: deborah_evans77@hotmail.com

Brettun's Village Shops

10% discount to the PSLAC members

CLPW Leather

10% Discount for PSLAC Members



Photo by Debbie Evans

Like the sandals? Leanne Stevens had them custom made in Portland Oregon for \$80.00 and I liked the style. Dusty Wert



Photo by Dusty Wert



Photos by Deddie Evans



HERITAGE LEATHER COMPANY
*Offering a 20% discount to PSLAC
Members (15% on leather)*

Books on Saddlery By Verlane Desgrange

Verlane Desgrange, P O Box 19006, Spokane, WA 99219, phone (509) 455-9078 FAX (509) 624-9082, email: verlaned@aol.com

Permanent address: P O Box 1862, Cody, WY 82414, (307) 587-9078 phone

All books bound with lay-flat plastic spiral binding and 80 lb cover stock with clear plastic protective end covers. Full color and original size (3" x 5") photos where noted. All drawings reproduced actual size of originals. Books sent priority mail in continental USA. Postage prices in parentheses for USA. Other postage prices will be quoted. If ordering more than one book, add \$2.50 for each book after the first one. Insurance not included in postage prices.

CHOOSING AN ENGLISH SADDLE, \$11.00, (\$4.00)

B & W illustrations on types of English saddles, how to fit a rider, and basics on fitting a horse.

CLEANING AND OILING SADDLES: ENGLISH AND WESTERN. \$14.00, (\$4.00)

9 color photos, B & W measured drawing to build a saddle stand. Lots of information on cleaning, including removing mold. Completely revised and reformatted into a gorgeous booklet.

LET'S LEARN ABOUT LOOPS, \$12.00, (\$4.00)

The most comprehensive book available on hand stitching in fixed and sliding loops on strap work and bridlery. Dozens of B&W drawings show every step for this most important skill. Applies equally to English or western.

THIS OLD McCLELLAN, \$16.00, (\$4.00)

10 color photos plus measured patterns for all straps and full size cutting patterns for girth parts and stirrup hood for the 1904 McClellan saddle. Stitch for stitch accurate to cavalry specs. Hardware lists also.

MAKING A ROLLED BRIDLE, \$12.00, (\$4.00)

2 color photos and over a dozen B&W drawings showing you how to make a rolled western bridle. A very important section tells you how to measure a horse's head for accurate bridle size.

INSIDER INFORMATION ON WESTERN SADDLES, \$20.00, (\$4.00)

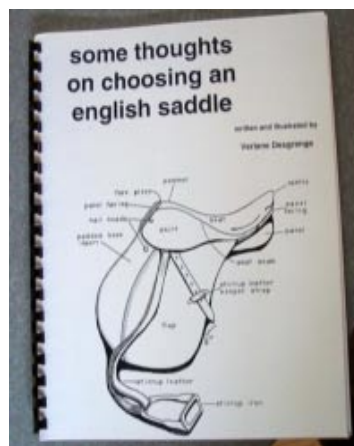
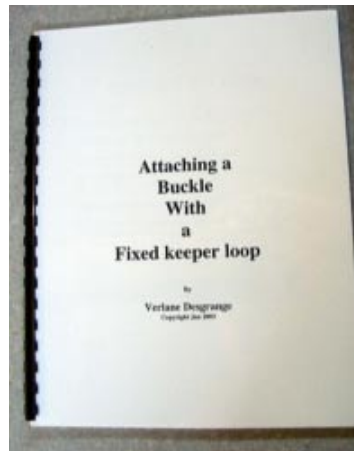
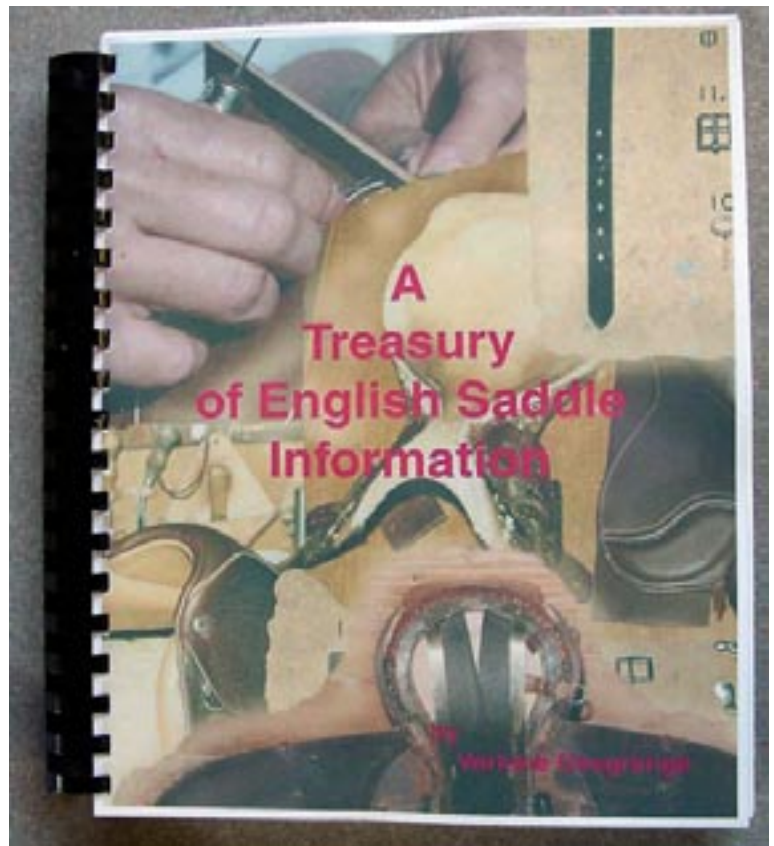
51 pages with dozens of B&W drawings explaining important concepts pertaining to fit, form, and function. Information developed from 25 years of teaching experience at Northwest College's Equestrian program and Spokane Falls Community College's Saddlemaking program.

A TREASURY OF ENGLISH SADDLE INFORMATION, \$75.00, (\$6.95)

The magnum opus of English saddle books: 69 color photos and 140 pages of B&W. Gazoodles of drawings to fit, form, and function of English saddlery. A how-to book that also shows how to set up an English repair shop, do the fine stitching for English saddlery, replace a seat, and make a felt panel. This is the kind of information you won't find anywhere else. This heavy book requires extra postage as shown. Cannot be combined for reduced postage rate.

INSTALLING A STUD HOOK, \$14.00, (\$4.00)

9 color photos in a recently updated book with lots of B&W



drawings and text to explain this most important English bridlemaker's skill. Whether you want to repair an English bridle or make one from scratch, you must know this operation to complete the job successfully.

CLINCHER BROWBAND FOR AN ENGLISH BRIDLE, \$12.00, (\$4.00)

The browband itself is a relatively easy project as far as English bridle work goes, but the greater lesson in this booklet is how browbands fit and function, something that all bridlemakers need to know. 4 color photos plus drawings.

New -- New -- New

Books below all in color with full size pictures of actual work

CARVING SEQUENCE OF CLIFF KETCHUM PATTERN, \$34.00, (\$4.00)

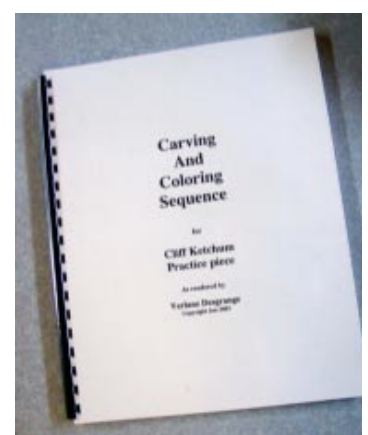
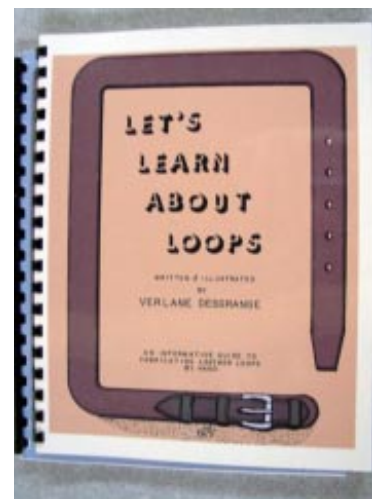
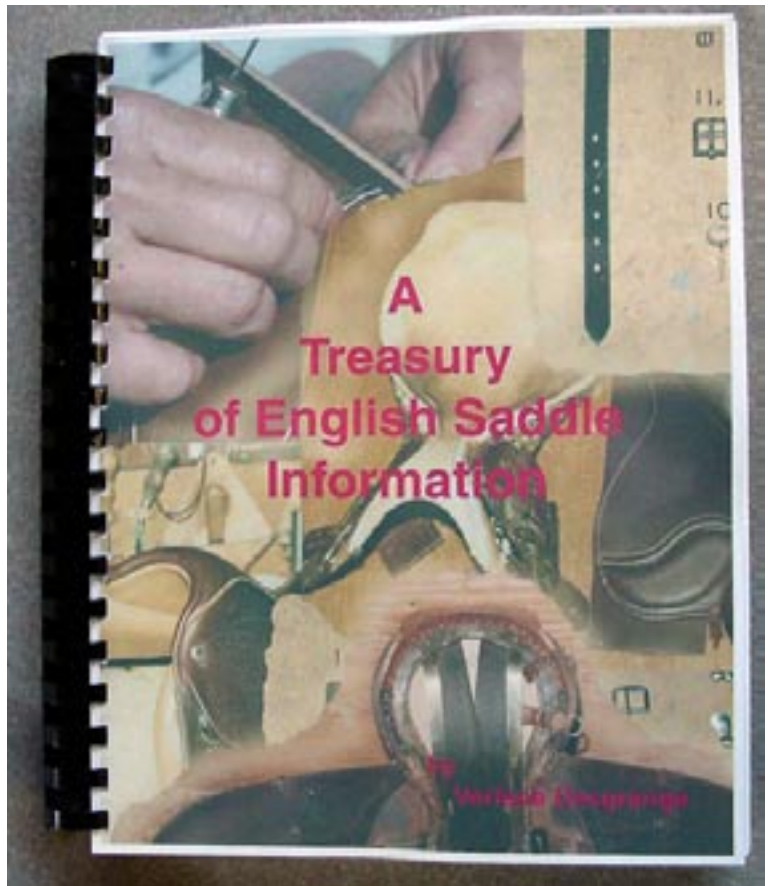
This photo step-by-step booklet shows how a simple pattern was carved and then colored on leather. Pattern included. All pictures actual size so you can compare your work with book photos. Printed on heavy card stock.

INSTALLING A BUCKLE WITH A FIXED LOOP, \$17.00, (\$4.00)

This is the first time a full size, full color photo sequence shows how a fixed loop and buckle is attached to a strap by hand stitching techniques. You can compare your work to that of the book. This is an excellent companion to "Let's Learn about Loops". Printed on heavy card stock.

COLOR POSTER (8 1/2" x 11"), \$2.50

Parts of an English saddle. Add this on to any order with no additional postage charges



From the



From the Dusty Work Bench: Paula's Dessert

The BBQ in June was GREAT. There was the annual garage sale. I couldn't find anything to sell, so I couldn't play clerk this year. There is always—next year.

We had a wonderful BBQ with hamburger and hot dogs. Of course there was salads, chips, pie, chocolate cake, cookies and the 'Chocolate Mousse' and that was the winner of the dessert contest. The winner was Paula and she sent me the recipe. She is from Australia and has different terms for things like measurements—just read the recipe below and you will see.

The best thing that happened was the most deserving person received the "Bill Churchill Award"—the winner was Bob Stelmack. Congratulations Bob! No one works harder than you for PSLAC, the Rawhide Gazette and the advancement of leathercraft. I would like to thank you for all that you do for all of us.

This is the recipe, and it is yummy.

Paula's recipe:

It's really very, very simple and doesn't take too long to prepare.

For the quantity I took to the meeting you need the following:

5 packets of Chocolate Mousse
3 punnets of fresh raspberries.

Check and clean all the raspberries and leave in colander to drain.

Make up the 5 packets of Mousse in a large dish, then mix in the drained raspberries and pop into fridge till needed.

It really is a very simple dessert, but, I've never come across anybody that doesn't like it yet. Since raspberries are a very short season, I've also done it with strawberries and also cherries, both of them are scrumptious too, but, somehow the raspberries are the nicest.

there wouldn't have been any room left for the chocolate mousse!



Dusty Wert

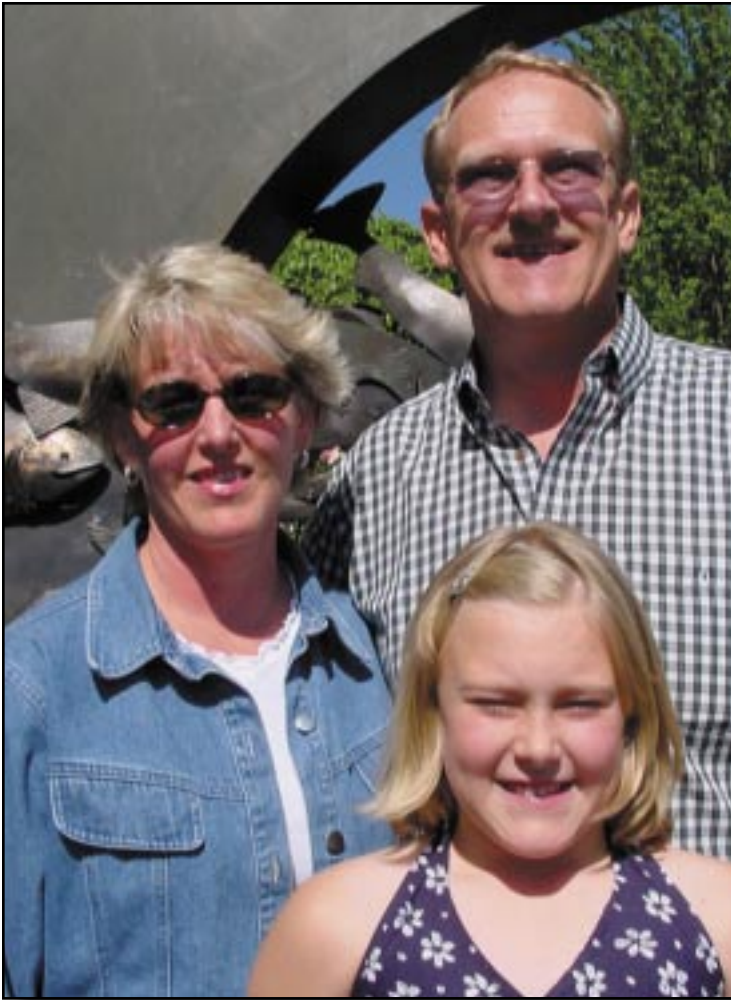
Tandy Leather Company
Offering a wholesale discount



I asked if she meant a "pint" instead of "punnet". No mistake, the word is 'punnet'. Looks like Americans don't use that word, I asked Marq and he said it conveyed nothing to him, but because he knew the recipe he knew what I meant.

When you buy those small square (4"x4") egg-carton-type containers (basket) of berries, in Australia those containers are called punnets. So in the recipe I used 3 punnets, not pints, sure would have tasted nice with pints instead of punnets, only problem is





The Complete RawHide Gazette on CD 2002–Demo

Ken Eriksen brought in his copy of the RawHide Gazette on CD and a demonstration and discussion was given by Bob Stelmack.

The Leathercraft Store
Offering a Discount to PSLAC members

The Stitching Pony Donation

Ron, Judy and Molly Hanlin came all the way from Bend, Oregon to attend the PSLAC June Bar-B-Que meeting. They brought with them a donation in memory of **Guy F. Eddy**—Holster Maker. The donated stitching pony was quite well made and everyone wanted to own it, but it was to become one of the raffle items for those who attend the meeting.

Before the stitching pony went to the raffle, our very own **Harry Smith** donned those “gayly” colored chaps made by **Phil O’Neil** and gave the “pony” a test ride. Dusty captured the “gay caballero” in his finest moments. Go, Harry! This ride may have set back leather crafting several years.





The PSLAC Group for the June 2003 Meeting

Items up for Grabs

Various people donated items for our raffle that included: raw-hide lace, lead printing type for embossing leather, stitching pony, leather patterns, magnifying glasses, leather book from Verlane and the Complete RawHide Gazette 2002 on CD.



RG On-line

The Puget Sound Leather Artisans Co-Op can be found at:

<http://pslac.org>

If you need the **UserId** and **Password** for the subscription pages, just contact the *Raw-Hide Gazette* at:

stelmack@nwlink.com

-- of course the password information is free for the Puget Sound Leather Artisans Co-Op members. Those on the Internet still need send \$10 per year for a membership to:

Jeff Bement
3942 SW - 329th PL
Federal Way, WA 98023
U.S.A.

Your Photos here - if you send them to:

Web Editor: Bob Stelmack
7 Memorial Hall Drive
Wellingore LN5 OBD
England

Photos sent in to the PSLAC are used, space and focus permitting.

They are also posted, in living color: on the Internet.



**Toll Free:
(800) 541-3264**
**Bee Natural
Leather-
care**

*The ultimate in
leather care prod-
ucts*

P.O. Box 820803, Vancouver, WA. 98682-0018
(360) 891-7178 , FAX: (360) 891-7166
Email: bnatura@pacifier.com

**SPOTLIGHT on PRO-CARV — Working and Tooling Leather
Formulation**

DIRECTIONS:

Dilute concentrate with water: 1 part PRO-CARV to 10 parts water is recommended for carving and tooling. When immersing the leather for shaping or forming, add 8 oz. PRO-CARV to 3 gallons of water.

NO CASING IS NECESSARY

Leather can be immersed or sponged with this solution. PRO-CARV eliminates the need to case leather. PRO-CARV allows you to begin working with the leather after immersing for 3-5 minutes because of the very rapid penetration into even the thickest hide. Allow the surface to dry somewhat before beginning forming or carving.

**Contact MacPherson's, Hide Crafters, Goliger's
Leather, and The Leather Factory for any of the fine
Bee Natural Leather products.**

Advertisement

**Start a Child in
Leathercraft Today**



**Bill Churchill's
Childrens Leather
Program**

*Confidence
Observation
Practice
Imagination*

RawHide Gazette

Editor / Publisher: Bob Stelmack
Co-Founders: Bill Churchill & General Seymour
Treasurer/Secretary: Jeff Bement

Copyright © 2002 PSLAC, Puget Sound Leather Artisans Co-Op

The RawHide Gazette is published monthly (12 times a year). Address for information and correspondence: PSLAC, c/o Jeff Bement , 3942 SW – 329th PL, Federal Way, WA 98023, U.S.A.

email: Jeffbement@aol.com

The RawHide Gazette is provided to the Puget Sound Leather Artisans Co-Op as a part of their membership benefits. Annual dues are \$24.00 USD per year.

All submissions are subject to editing for clarity and length. All articles submitted must be accompanied by name, address and permission of writer.

POSTMASTER: Send address changes to PSLAC, c/o Jeff Bement , 3942 SW – 329th PL., Federal Way, WA 98023, U.S.A.

Advertising Rates

The RawHide Gazette now offers advertising space to interested parties. Ad spaces are as follows:

1/4 Page or Business Card \$60 USD
1/2 Page \$110 USD
1 Full Page \$200 USD

These rates cover a six month time period. PSLAC members are entitled to a 25% discount. Leather companies supporting PSLAC are given free Business Card size advertisement, additional space at regular rates.



Toll Free Order Lines:
1-(888) 263-5277
Fax: 1-(888) 263-5086

Hide Crafter Leathercraft

Offering wholesale discount to PSLAC members
ON-LINE CATALOG www.hidecrafter.com

7936 Camp Bowie West
Ft. Worth, TX 76116

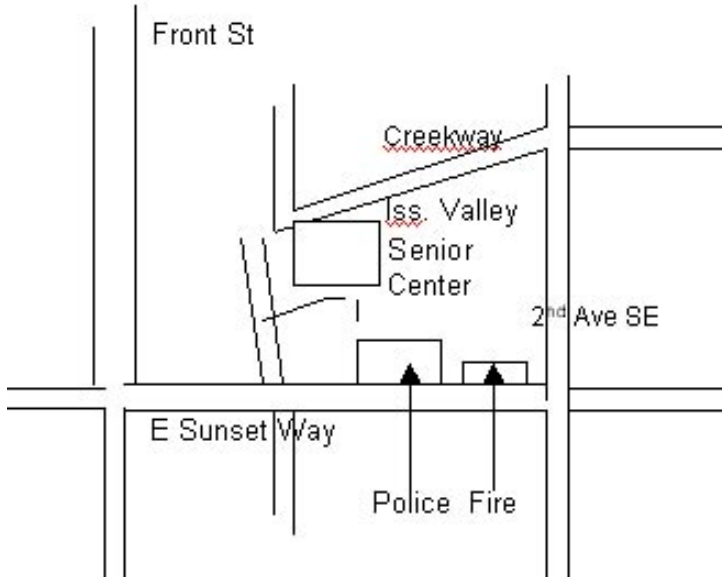
George Hurst, Manager
email: hcrafter@flash.net



Leather Factory Spokane

28 West Boone Ave, Spokane, WA 99201
Phone: (509) 328-9939
Toll Free: 1-800-822-8437
Fax: (509) 326-7019

Offering a wholesale discount to the PSLAC members
www.leatherfactory.com



Support our sponsors and take advantage
of the PSLAC Membership Discounts

Outside Washington
1-800-343-9949

(206) 328-0855
Fax: 328-0859

MACPHERSON

Leather Company

Leather, Shoe Finding and Saddlery

Offering a 30-40% off retail discount to the PSLAC members

519 - 12th Avenue S.
Seattle, Washington 98144
Greg MacPherson

Brettun's Village Shops

302 Lake Street,
Auburn, ME 04210
(207) 782-0861
URL: <http://www.brettunvillage.com>
Email: leather@brettunvillage.com

Offering a 10% discount to the PSLAC members

Churchill Barton, Manager

PSLAC Puget Sound Leather Artisans
Co-op Home of the RawHide Gazette
<http://pslac.org/>

PSLAC Membership Application

If you know someone who is interested in leathercraft — give them this information:
Puget Sound Leather Artisan Co-Op MEMBERSHIP APPLICATION

YOUR NAME: _____
STREET ADDRESS: _____
CITY, STATE, ZIP: _____
PHONE NUMBER: (____)____-_____
E-Mail: _____

Send this form along with \$24.00 (\$10.00 for Internet Membership) your first years dues to:

Jeff Bement
3942 SW - 329TH PL
Federal Way, WA 98023
U.S.A.

If you would like to subscribe to The Leather Crafters & Saddlers Journal through the Co-Op and include an additional \$29.00 for a one year subscription.

RawHide Gazette Technical Publication Information

The RawHide Gazette is produced using Adobe InDesign 2.0. The photos are taken with a variety of digital cameras including the Sony MVC-FD77 (Seattle, USA), and the Sony MVC-FD98 or Sony CD-300 (Wellington, UK). Photos were cropped and retouched with Adobe Photoshop 5.0 and the final Portable Data File (PDF) was created using Adobe InDesign 2.0. The pages on the pslac.org web site are created with Homesite 4.0. Dynamic CGI programs on the pslac.org web site are programmed in Perl 5.006



Dusty Johnson

PLEASANT VALLEY SADDLE SHOP
1220 S. County Rd. 21
Loveland, CO 80537
Phone: (970) 669-1588
Fax: (970) 669-1589
E-Mail: dusty@pvsaddleshop.com
URL: <http://www.pvsaddleshop.com>

Offering a 20% discount to the PSLAC members



CLPW Leather
Outside USA 901-728-5551
Inside USA 877-728-5551 TM

Leather

10% Discount for PSLAC Members

Leather Crafts and Supplies

1482 Madison Ave. Memphis, TN 38104
<http://www.shopforleather.com/>

Leather Factory

Durham Hefta
Manager



Portland

Phone (503) 255-8818
Fax (503) 255-9011
Toll Free (888) 277-3360
www.leatherfactory.com

13221 N.E. Whitaker Way
Portland, OR 97230-1128

Offering a wholesale discount to the PSLAC members




SKYSHOOTER
(Dave)
(425)823-0110



TRADER'S
Stitching Posts at
Wholesale

SCREAM'N EAGLE
(Mike)
(360)658-1847

Tandy Leather Boise

JoAnne Tackitt, Manager
285 N. Orchard St.
Boise, ID 83706



Toll Free:
1-800-930-2850
(ph. 208-375-5589. Fax. 208-375-7168)

<http://www.tandy-leather.com>

Offering a wholesale discount to the PSLAC members

The Leather Factory

Kermit P. Creek
Manager



Billings

Phone (406) 256-1355
Fax (406) 256-1360
Toll Free (888) 277-3323
www.leatherfactory.com

115 North 30th Street
Billings, MT 59101-2032

Offering a wholesale discount to the PSLAC members



TWLeather, Inc.

Toll Free: 1-800-477-9923
2017A White Settlement Rd.
Fort Worth, TX 76107
(817) 877-5427, Fax (817) 877-5432

Offering a wholesale discount to the PSLAC members

Tandy Leather

Jim Linnell
Director of Operations



Toll Free:
1-888-890-1611

<http://www.tandy-leather.com>

Offering a wholesale discount to the PSLAC members



THE LEATHERCRAFT STORE

MAIL ORDER & INTERNET SALES
LEATHER HIDES, LEATHERCRAFT SUPPLIES, TOOLS,
KITS, BELTING, BUCKLES, SADDLE & TACK HARDWARE,
NATIVE HERITAGE KITS, LEATHER LACE & MORE!

VISIT US AT
<http://theleathercraftstore.safeshopper.com>

253-228-1150

P.O. Box 4551
Spanaway, WA.
98387-4036

Email: jwleathercrafter@quest.net

(503) 293-2833

Fax: 977-1762

J & W

Leather Crafters

Leather Repair: Saddles, Tack, Harness, Chaps, anything
Leather except clothing. We make new Items & Custom Orders

<http://www.users.qwest.net/~jnoecker/leather/>

Offering a 10% off retail discount to the PSLAC members

"It never hurts to ask!"

Joseph & Wendy Noecker

3912 SW Dolph CT

Portland, Oregon 97219

Taking I-90

From Auburn: come north on Hwy167, or I-5, then I-405 north, then onto I-90, going east:

From Everett: South on I-5 to 405 South, or to I-90, going east:

From I-90 get off on exit 17/Front St., and bear right onto Front Street. At the third stoplight, turn left onto E Sunset Way, then see below:

Taking Hwy 18 from around Auburn to Issaquah

Get on Hwy 18 going East, from Auburn, it's about 12 miles to Maple Valley, then at about 2 ½ miles after Maple Valley, look for the turn off to Issaquah Hobart Rd SE, turn onto ramp 276th Ave SE and go 0.6 miles, bear left onto Issaquah Hobart Rd SE. It's about 8 ½ miles from there to Issaquah. Hobart becomes Front Street S, which takes you into downtown Issaquah. Turn right onto E Sunset Way, then see below:



After turning onto E Sunset Way:

go two blocks (past the Police and Fire Stations), turn left onto 2nd Ave SE, go past the old Senior Center building on your left, and a baseball field, then left onto NE Creekway, go almost to the railroad tracks. The new Issaquah Valley Senior Center is a brick building on your left, parking in front of it. There is also parking behind, from Sunset, turn left into the parking area, right before the Police Station (look for a large parking sign on your left), and follow it till you see a kids play ground. Tiny and I couldn't get in to see inside, but it's a brand new building and looks to have a great, large meeting room area and a couple of medium sized side rooms, one set up for crafts. Address: 75 NE Creekway, Issaquah, WA 98027 (*see another page for a detailed map of the building area*)

PSLAC

c/o Jeff Bement
3942 SW - 329th PL
Federal Way, WA 98023
U.S.A.

