

Raw Hide Gazette

Copyright © 2004 by PSLAC, All Rights Reserved

"Without question, the Raw Hide Gazette is by far the best and most informative and comprehensive Guild publications of all of them! You are to be commended for your very fine and professional efforts. Keep up the good work. With admiration"
/signed/
Al & Ann Stohman, December 1997

Volume 9, Issue 12

Puget Sound Leather Artisans Co-Op

May 2004

Hide Highlights

Page

- 1 Dusty's Braided Belt
- 2 Pacific Days and White River Bluegrass Festival
- 3 Leather Craft: My Toolbox
- 4 Home Brew Leather Dressing—Alcohol Free
- 5 An Anvil
- 5 A Note from Jim Linnell
- 6 Arbor Press
- 8 Mike's Document Bag
- 8 Leather Crafters & Saddlers Journal Complimentary Guild Subscription Program
- 9 New Stohman Design Instruction Book
- 9 Stohman Step by Step by Peter Main
- 10-12 April Meeting "Show & Tell"
- 13 Harry's Lacing Class
- 15 May Meeting at the North Seattle Tandy Store!
- 15 April Meeting Members



Meeting Announcement

NEXT MEETING on

**Sunday,
May 16th**

**2-5pm
at the North Seattle Tandy
(see map on last page)**

Dusty's Braided Belt

I bought a belt from Tandy that had the look of being braided only it wasn't. It was embossed and had an edge that was straight so just one look and you could tell that it wasn't braided. At first I thought, "not a problem", but the more it hung on the wall, the more I started to think on how to improve on it's looks. Finally it dawned on me that the straight edge had to go. It took an evening to cut the edge off with my super shears and using a file or wood rasp, the tight

places were trimmed. I then dyed it with a dye block medium brown and antiqued it tan. Edge coat on the edge of the belt and then I put leather balm on to strip out some of the antique and buffed it up when it dried. The edges were burnished with a canvas rag.

If you want a stiffer belt perhaps you would want to spray Super Shene or what ever you like to use. Now I have a belt that looks like I braided it myself.

Dusty Wert

Pacific Days and White River Bluegrass Festival

Hello, My name is **Barbara Lourdes** and I live in **Washington State** in the **City of Pacific**. It is a small city located in South King County, 30 miles south of Seattle and 15 miles east of Tacoma. It was incorporated in 1909. I think Pacific is a great place to live and do business! It is out of the big city, but close to everything along I-167 between Seattle and Tacoma. Please join us for the **White River Bluegrass Festival—June 18th, 19th and 20th** and **Pacific Days—July 22, 23, 24**. I will be setting up a booth for **Puget Sound Leather Artisans Coop** for both events and would like as many volunteers as possible to help out. Anyone interested in having their own booth please contact the City of Pacific or Mayor Richard Hildreth at 253-929-1100.

Feel free to visit the web site at:

<http://ci.pacific.wa.us>

...or email me at:

babslourdes2001@hotmail.com

...or email the mayor at:

PacificMayor@aol.com

...or...

Community@CityofPacific.com

White River Bluegrass Festival

On June 18th, 19th and 20th, the City of Pacific and the Pacific Community Board, which I am a part of, will be hosting the White River Bluegrass Festival. This event will bring together some of the top Bluegrass Musicians in the state and attract thousands of fans from our area and from across the Northwest. We will have music Friday night, all day Saturday and a Gospel Bluegrass show on Sunday morning.

Besides local fans, there is a group of dedicated fans and musicians who spend the summer traveling from show to show. Starting on the night of Sunday, June 13th, we will see RV's and Campers start to arrive with most of them arriving on Thursday. We are expecting approximately 100 - 150 Motor homes in our park as well as hundreds more staying nearby in local motels such as our own King Oscars. There will be a small cover charge for the festival itself as well as Vendor Booths.

Pacific Days

Pacific Days will be held on July 22, 23, 24 and has been an annual event for our city for many years. Originally it was an event sponsored by our Fire Fighters. This year promises to be one of the best Pacific Days Festivals ever. We will bring back the popular Children's Parade on Friday, July 22nd and follow it up with community events that evening. On Saturday, we will officially open with more vendors, community booths and more music. We will have rides, games and events for people of all ages and of course the popular Pacific Days Parade. On Sunday we will have more music and fun as well as awards celebrating and thanking many of the citizens in our community.

Scout Pow Wow May 1, 2004



Photos by Debbie Evans

Rounders and key fobs were the items of the day at the 2004 Pow Wow. PK Dan and Dave Jensen represented PSLAC and directed the leather work for all.





My Toolbox

This is my first attempt at a hand-made personal toolbox—inspired by **Peter Main**.

I first constructed the box by gluing the four sides together and holding them in clamps. Then I glue on the bottom and lid of the box—ending with a closed hollow box.

The hollow box is then sawed in half—top and bottom. On the inside of the bottom sides, I glue pieces of wood identical to those from which the sides were originally built - these serve to hold the lid in place.

The lid is of course and absolute perfect fit, because it used

Leather Craft: My Toolbox

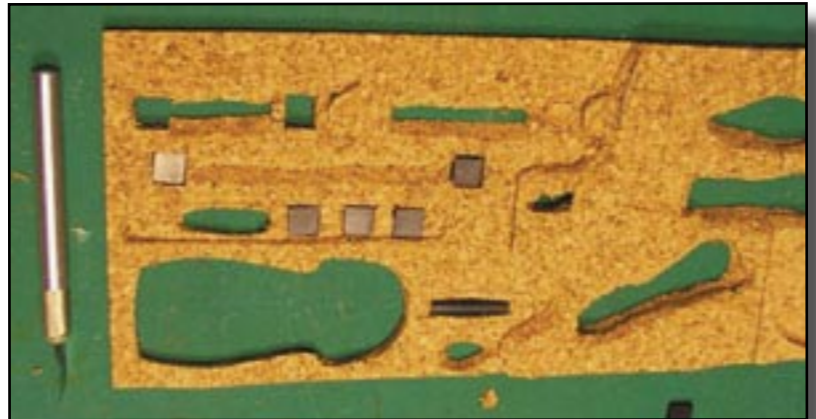
(ed. note: Just received the following from Johan:

I have just published a new project on my web pages and I thought you might want to use it in one of your future Rawhide Gazettes or Member pages.

It can be seen at:

www.johan-potgieter.com/leat-toolb1.shtml

If you want to put a link in the article to my pages, here they are:



to be one piece with the bottom of the box.

The next step was to plan the inside—the placement of the tools and the layers of cork that would give them a place to lie. I embedded strong magnets into the cork and glued it down with epoxy glue.

I lined this box with pre glued felt from the local wood-working store (used for lining jewelry boxes), but never again - the adhesive is very strong and is very difficult to work with on the uneven surface - next time I will line it with garment pigskin.

Next was the enjoyable part of the project—putting the design on the leather—here the whole design has been

My personal leathercraft page:

www.johan-potgieter.com/leat01.shtml

Our Leather Guild Page:

www.leatherguild.org

Johan Potgieter

*President: Headwaters Leather Guild
(Minnesota)*

johan@leatherguild.org

www.leatherguild.org





carved and one half of me wanted to stop right here!

I begin with the Zulu shields and progress to the **Trevor Jones Bars** at the top and bottom. The **Zulu** shields are symbolic of the oldest use of leather in Africa and I just liked the design.

The Trevor Jones Bars are dedicated to a master leathercrafter in **Natal, South Africa**, who made me a beautiful belt with a similar pattern on. The elephant was just another nice design I wanted to use in any Africa setting and the **Strelitzia** flowers just seemed to complete the picture.

I sometimes use a magnifying glass on a stand when I do fine dying work—I just find it so much less stress on my eyes in artificial light.

At long last the dying is done and the leather is glued onto the box lid and a final picture of the finished design.

To contact me,
please send e-mail to:
johanpotgieter @ comcast.net



Home Brew Leather Dressing—Alcohol Free

(ed. note: |Steve kindly gave permission for his recipes. Interesting and a fun read!)

First **A WARNING** for the ones that have little to no experience with hot liquids. Extreme caution must be used as a terrible burn can result from the hot oil. This has not been an exact science as I was starting out with no reference.

I started with a 2 5/8 oz. (74g) can of **Kiwi Mink Oil** from WalMart, a piece of **Pine Rosin** about the size of a nickel and piece of **Bees Wax** about the size of a quarter. I melted the wax and rosin in a microwaveable container in the microwave (*my wife didn't share the excitement of my scientific endeavors*). It took quite a while for them

to liquefy to the point of mixing well. After stirring well, I spooned the mink oil into the doomed, previously mentioned container and nuked it into submission as well. I stirred the mixture and poured it back into the tin container that the mink oil originally came in to the surprise that even with the added ingredients, it all fit back in. I figure there must have been water in something that boiled away. I will have an alternative container on my next batch. I set the tin on my stove burner to remelt the concoction and get it to lay smooth in the container. My stove has a small burner that has an extremely small flame for fondue or something. That is what I used. Any more than a very low flame will start the mix to boiling and could start a fire if not a very bad smoke (which my wife would like even less than losing a plastic bowl). After the mix hardened, and I mean hardened, I realized that I must have

used too much wax. I had to heat the surface of the mix with my wife's blow dryer (to which she was very suspicious of after the bowl situation) to get it to spread very well. I was able to heat the leather gently with the blow dryer and make it soak in, but too much heat produced an almost instantaneous color change that is difficult to get a consistent color with. So, I went back to the burner and heated the mix back into a liquid and carefully poured the mix into the bowl that had gotten me in so much trouble. I added about two tablespoons of neatsfoot oil to the blend and mixed it well. I quickly poured the mixture back into the tin and slowly reheated it to get it to settle, turned out the burner and let it solidify again. This time the dressing was easy to rub into the leather and again, doesn't significantly darken my leather (unless the blow dryer is used), and imparts a nice rich hand rubbed feel to the

leather without a lot of shine.

The next batch that I make I will buy the correct pot to heat the mixture in on the stove and a “small” plastic bowl to hold the final product (just let her complain about these cooking utensils). Heating the oil in a tin on the stove is just too dangerous. With a good steel pot I believe that the rosin and wax will melt much quicker on the stove than in the microwave anyway. Also, I noticed that the microwave had gotten very hot and I knew what that meant if I burned it out (probably a much more expensive one as a replacement). After it is mixed well and poured into a small microwaveable bowl, it will melt easily in the microwave due to the oils that have been added.

My next wax project is to mix a hand stitching wax so that my stitches will lock tightly. I just need some lanolin before I start that one.

I fly by the seat of my pants too often and get myself into these situations mainly due to the fact that I don't have the patience to stop and go to town for the correct supplies. I hope that my rambling makes sense. **Safety in the form of good common sense, gloves, and safety glasses should always come first.**

Steve Harris

Bastrop, LA
IILG Executive Board Member
www.iilg.org

An Anvil

I want to thank all my customers for their support, and most important, their purchases. As I have mentioned in the past, I have had my eye on a very nice anvil for quite some time, and finally my kitty allowed me to make the purchase today.

Most of the anvils available today are cheap imports and leave a lot to be desired. They are made of cast iron, which is soft. A proper one is hardened and tempered to give more than a lifetime of service. There are many out there which are still in service after a couple hundred years, and their owners absolutely will not part with them. Good ones, made either here or in England are pricey, and some of them you just about have to take out a second on the house, or mortgage your kids college fund.



Anyway, this one is American made, having been made in Colorado. My only complaint is that I called to make sure the shop had one in stock, and said I would be there in a few minutes. When I got there and asked if he had it all polished up, he didn't, and it was still dusty. Oh well. At least he carried it out to the pick up.

Norm

A Note from Jim Linnell

I recently saw several messages about **Peter Main's** new book and the desire of many to receive an autographed copy. Peter Main is planning to be at the **Sheridan Show** this year and so is **Ann Stohlman**.

Providing she is up to it, I will get Ann (and Peter) to sign a copy exclusively for you, if you order (using the link below) **by Wednesday, May 12, 2004**. Your signed book will be sent you after I get back from Sheridan, probably the first week of June. Reserve your autographed copy the new Stohlman Step-by-Step today!

<http://www.tandy-leather.com/prodinfo.asp?number=STEPBYSTEP>

This is a limited offer, and I know the time is short, but I wanted to make it possible for those who are unable to go to the Sheridan show, to have an opportunity to get an autographed copy.

Best regards,
Jim Linnell, Director of Operations
Tandy Leather Company



Arbor Press

You have probably seen this little project on another mail list, but I feel that it is appropriate for the RawHide Gazette, also.

Some time ago one of the members of a web list I belong to was asking about substituting the usage of an arbor press for Tandy's embossing press due to the high cost of the Tandy machine.

I gave a response that I thought would work. I had an old arbor press lying around that I was not using, so I decided to do the work and see if it was satisfactory. Yes.

Here are the steps that I did to accomplish the job.

1. Remove the ram from the frame

2. Mark the center of one end of the ram and center punch it at the center. (Always center punch metal prior to drilling it. This will keep the drill bit from wandering.)

3. If your drill press table will rotate, rotate it to 90 degrees and clamp the ram to the table, making sure that everything is square. Tandy's accessories for their press have 1/2 inch shanks, so chuck a 1/2 inch drill in the drill press and center it on the center punch on the ram. (My drill press table does not rotate, so I chucked the ram in the metal lathe and drilled it there.) Drill the hole approximately 3/4 inch deep.

4. On one side of the ram center punch a spot centered on the above hole, approx. 3/8" from the end of the ram. This will be drilled and tapped for a set screw. I used a 1/4 x 28 (1/4" in diameter with 28 threads per inch) set screw. Obtain a tap for the screw you intend to use and the appropriate drill. Taps come in sets of 3 or individually. The sets are tapered, plug, and bottoming. The job of each is: (a) tapered starts threading the holes and aligns the threads straight in the hole.



Sample embossed impressions.



Ram chucked in the lathe and being drilled.



Accessory placed in ram.

(b) Plug is the second one, which chases the threads made by the tapered.

(c) Bottoming finishes cutting threads to the bottom of the hole.

Since we are drilling into a cavity, only a tapered tap is needed. The tap charts have the necessary drills listed. A #3 drill is needed for the 1/4 x 28 thread. Always use a cutting fluid or tapping fluid as a coolant and lubricant when drilling, tapping, or other machine working of metal.

Saves a lot of broken tools and lengthens the life expectancy of the tool.

5. Clean all the chips from the ram, de burr the holes, lightly lubricate the ram, reassemble, and adjust the ram in the press frame. Mine has a small piece of metal under the face plate with a couple of adjustment screws to adjust the ram's engagement onto the gear shaft. I tightened them down and then relieved the pressure until the ram goes through its vertical movement without undue hindrance.
6. The ram can be reversed if you need a solid surface, or like I did, get a 1/2 inch bolt with at least 1 inch of smooth shaft before the threads start (usually about 3"), cut it off so that the head seats up against the ram, file or grind any markings off the head, and you have a solid ram without having to reverse it.

I have had this press for a long time, and it was inexpensive. If I were getting one now to do this project, I would go upscale a bit to get one that works smoother. Mine is a bit ratchety running it up and down.

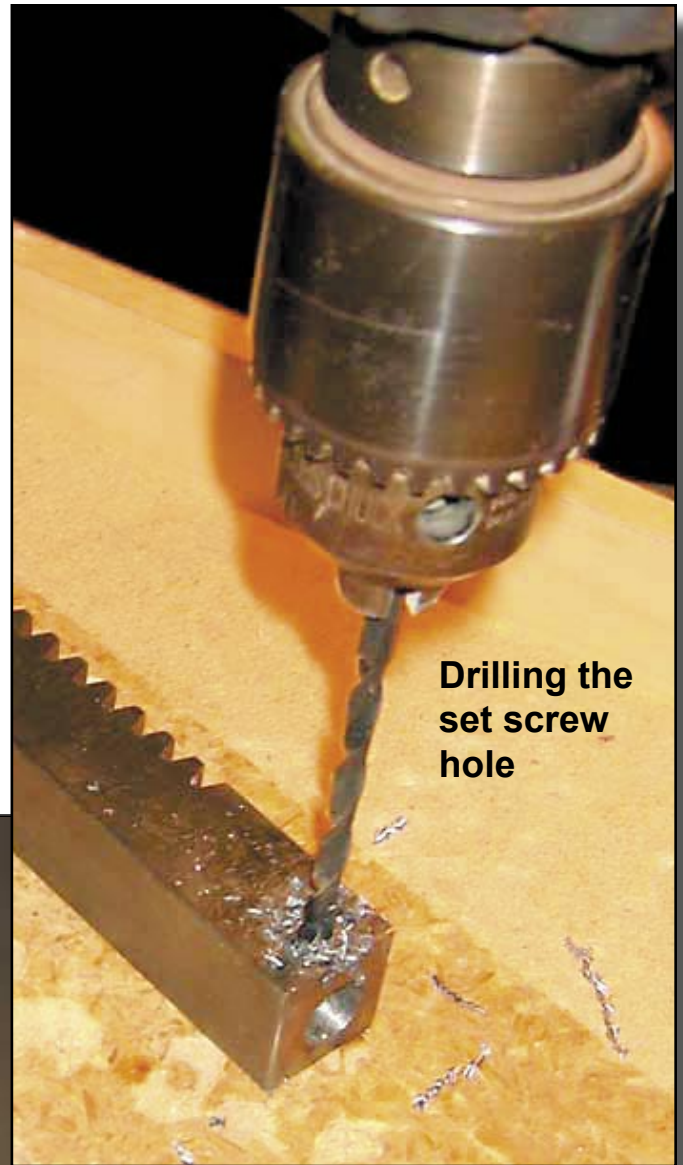
Next modification will be to mount it to a plywood plate so that I can clamp it to my bench. This will be a necessity, as it will tip when you put pressure on it.

Then, a nice table with fence to put over the metal base. I will undoubtedly make it from 3/4" MDF and laminate a topping on it, as leather must be damp when embossing,

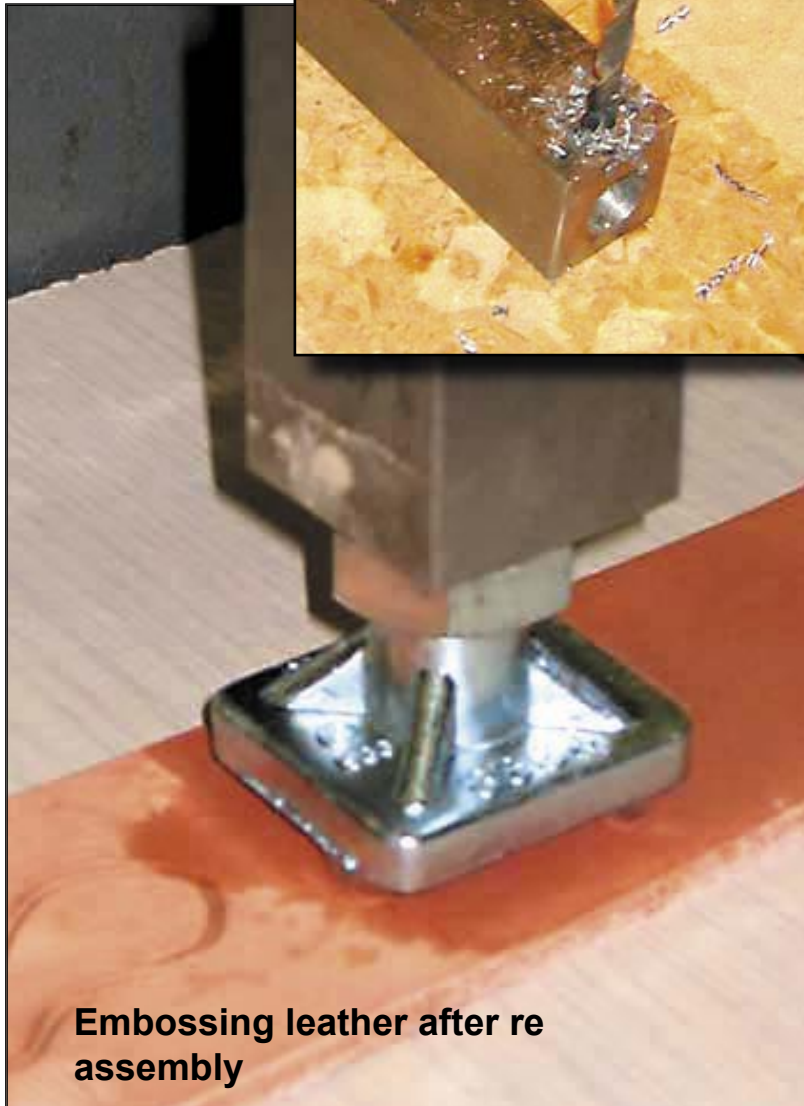
and this dampness will destroy the MDF very quickly.

Sounds like an upcoming project.

Norm



Drilling the set screw hole



Embossing leather after re assembly

Mike's Document Bag

I had the good fortune to attend the **Rene Berends Workshop** on making a **Document Bag** at **Hidecrafters** in Fort Worth, March 19-21. I have been doing leatherwork for little more than a year, and I was somewhat concerned about attending a class of this advanced nature, but Rene was delightful and the class of about 8 people became good friends during our session.

Making the bag itself showed me that my "sharp" tools weren't; most of the tools I so carefully packed and shipped were of little value; and "careful measurement" is really surgical precision. I learned so much in 3 days my head got heavy and I found it hard to hold it up on the flight home.

The result of the class was a beautiful document bag I still can't believe I made, lots of new skills and tricks to work on, and many new friendships and resources.

The Hidecrafters folks were wonderful; I actually arrived about 8 hours early for the class, but Ron graciously allowed me the run of the shop—I viewed a couple of videos and learned how to carve a feather while I waited! Of course I had to get the tools to carve more when I got home.

If you get the opportunity to meet Rene Berends or take a class, by all means do it. The experience, friendships and memories will last a lifetime.

Mike Gold

Email: gold@cafes.net



Leather Crafters & Saddlers Journal Complimentary Guild Subscription Program

(ed. note: The LC&SJ has extended its Subscription Program to our Co-Op. Jeff Bement will handle the subscription requests and insure that the new members receive the benefits of the LC&SJ.)



331 Annette Ct
Rhineland, WI 54501
Tel: 715-362-5393 Fax: 715-362-5391
e-mail: cirjournal@newnorth.net
The **Leather Crafters & Saddlers Journal** and the **International Federation of**

Leather Guilds have come together to offer a special complimentary subscription program to all guilds to help bolster guild membership. The program is made of two parts as follows.

Part 1

New members to your guild are eligible for one free ½ year (3 issues) subscription to The Leather Crafters & Saddlers Journal, compliments of The Journal. A guild officer is asked to be responsible for submitting the

names and addresses of these new members on a regular basis to The Leather Crafters & Saddlers Journal, attention Brian (see mailing address or e-mail address above).

Part 2

When a current member either subscribes for the first time or renews their subscription to The Journal, \$5.00 for each year of the subscription will be paid to the respective guild from The Journal. A one-year subscription will produce a \$5.00 payment and a two-year subscription will produce a \$10.00 payment to the guild. The member needs to make The Journal aware that the guild is to receive credit for the new or renewed subscription. The Journal can provide pre-encoded flyers to the guild which, when used by the members, will ensure that proper credit will be given to the guild.

If the guild is a member of the International Federation of Leather Guilds, the IFoLG will also receive \$5.00 for each year of the paid subscription (for new subscriptions only).

If you have any questions, please feel free to contact Brian Stelzel at The Leather Crafters & Saddlers Journal at 715-362-5393. Thank you for your interest in this program.

New Stohlman Design Instruction Book

...I have been pretty busy of late. I finished my new book the day before I left for Australia some weeks ago. This book is being published by The Tandy Leather Company ...due for release in Sheridan next month.

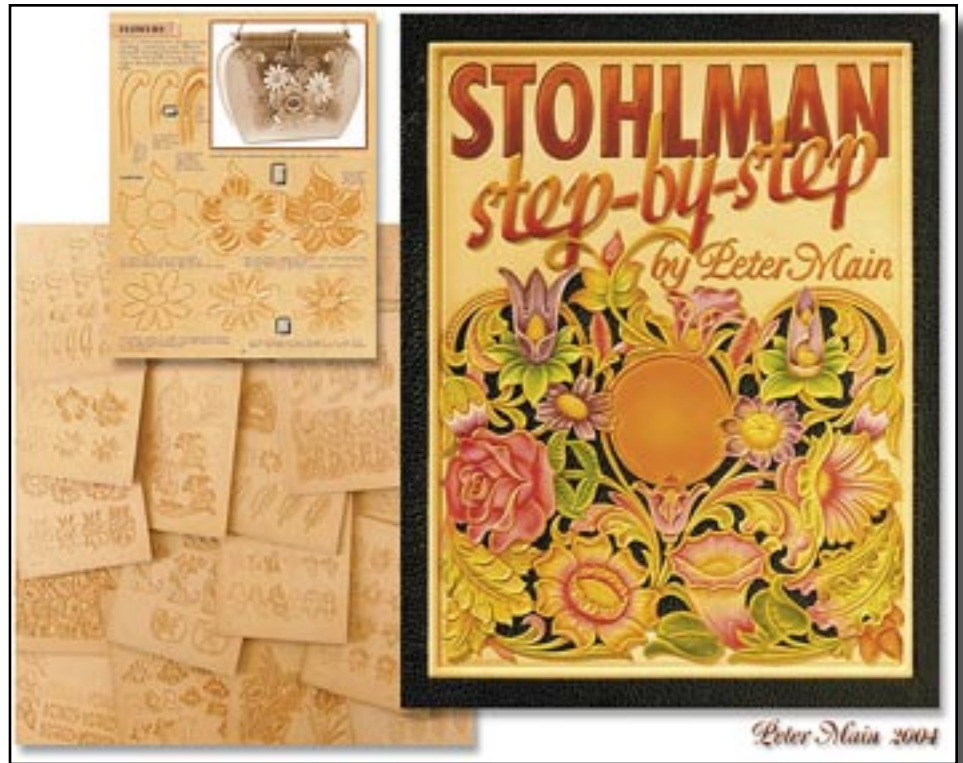
The content of the book is step-by-step instruction on carving Al's designs...many of which have not been published before. I have covered the carving of the designs in Volume One of the 'Al and Ann Stohlman Personal Patterns Portfolio', plus many more. There are photos throughout of items that Al has made, and instruction on carving these new (or should that be 'previously unpublished') designs. I have included many tips on finessing the carving of oak leaves, roses, scrolls and flowers....there are also tracing patterns of these designs.

The photo shows a completed page...a photo of all the carved leather pages, and the cover. The cover has a design that I created as a composite using the elements that are within the book. The word 'Stohlman' is carved inverted and the 'step-by step' and my name are applied. The floral design is a separate piece....cut out, filigreed and applied with a black grained leather background. This same black leather is used to frame the blind embossed raised border.

Ann Stohlman, though not in the best of health, will be in Sheridan...I'm sure she will be happy to sign copies of this book.

Am still enjoying myself back here in my workshop and have made many things that I will post at a later date.

From the land down-under,
Peter



Stohlman Step by Step by Peter Main

In this 28 page, full color book, **Peter Main** explains in text and toolings the details of carving oak leaves, acorns, wild roses and many other flowers, as well as, many styles of leaves and scrolls. As a special bonus, this book includes photos of original pencil drawings and images of some of Al and Ann's finest work never published in their books.

Autographed Copy Offer

We are going to have a limited number of these books autographed by Peter Main and, if possible, Ann Stohlman, at The Rocky Mountain Leather Trade Show in Sheridan, Wyoming, May 21-24, 2004. We are making this sure-to-be collector's item available to IILG bulletin board readers only! (*ed. note: IILG is at the www.yahoogle.com, search for IILG.*) Limit one autographed copy per customer.

When to Order:

Orders must be received by Wednesday, May 13, 2004.

How to Order:

Add 1 book to your shopping cart and complete the order by filling out the information on the checkout page and credit card information.

Note: This offer is available only through tandy.com. The autographed copy is not available through Tandy Leather stores.

Price: \$14.99



April Meeting “Show & Tell”

▲ Ken Imus’ Checkbook

◀ A close up of the leather project of Ken’s he started 10 years ago, that Terry is going to try to finish

◀ Paula did a nice braiding just to shoo flies away

▼ Leather flowers made by Steve (who happens to be Ken Imus’ nephew)





April Meeting "Show & Tell"

▲ Ken Erikson's brother made these holsters in 1968. Ken watched his brother make both holsters and that's how Ken got stuck on leather.

► Phil completed his latest kit from Tandy

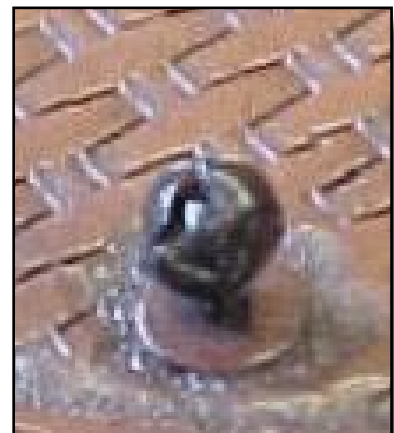


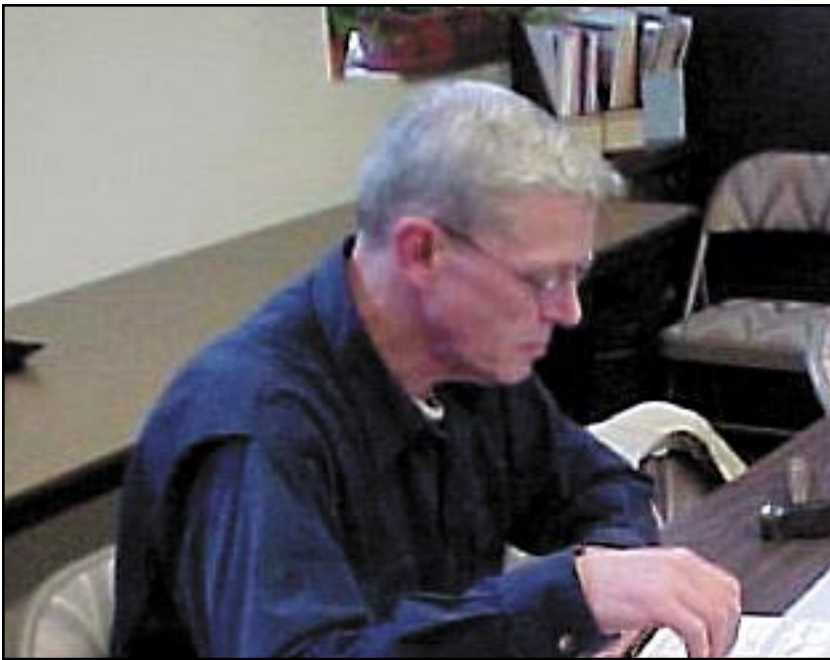


April Meeting "Show & Tell"

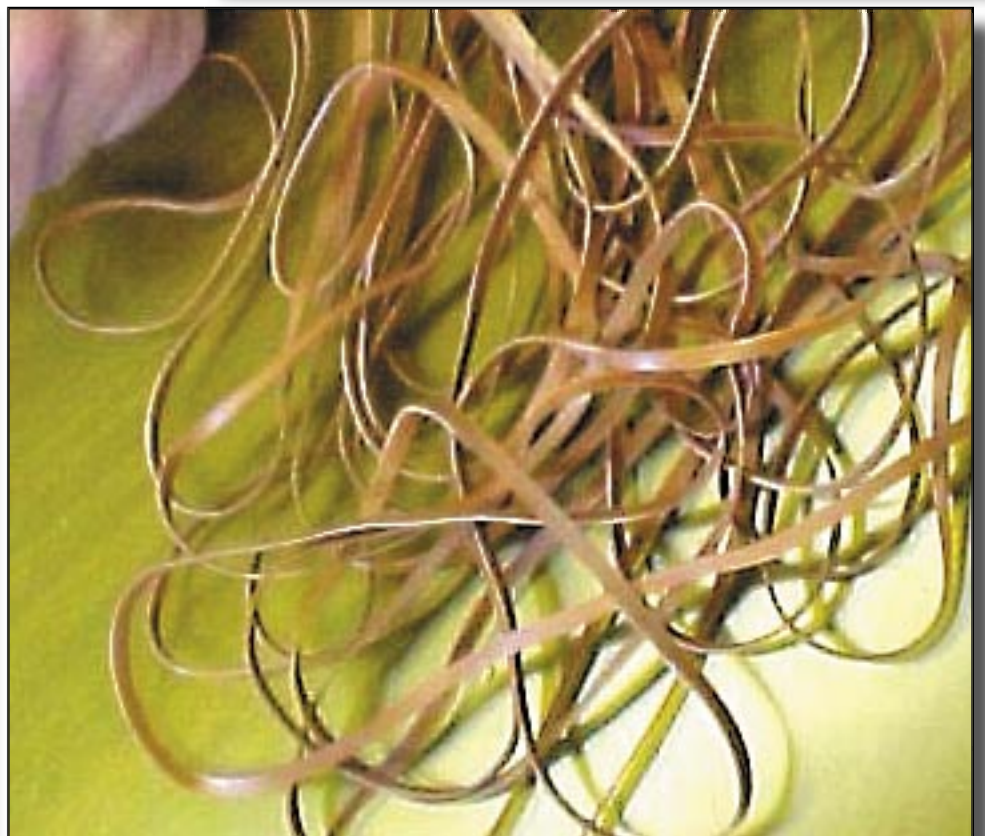
▲ "This alligator box is tough stuff", says Paula. She broke some needles trying to go thru the hide.

▼ Dale made a round box and brought it to show Paula with a special leather button





Harry's Lacing Class

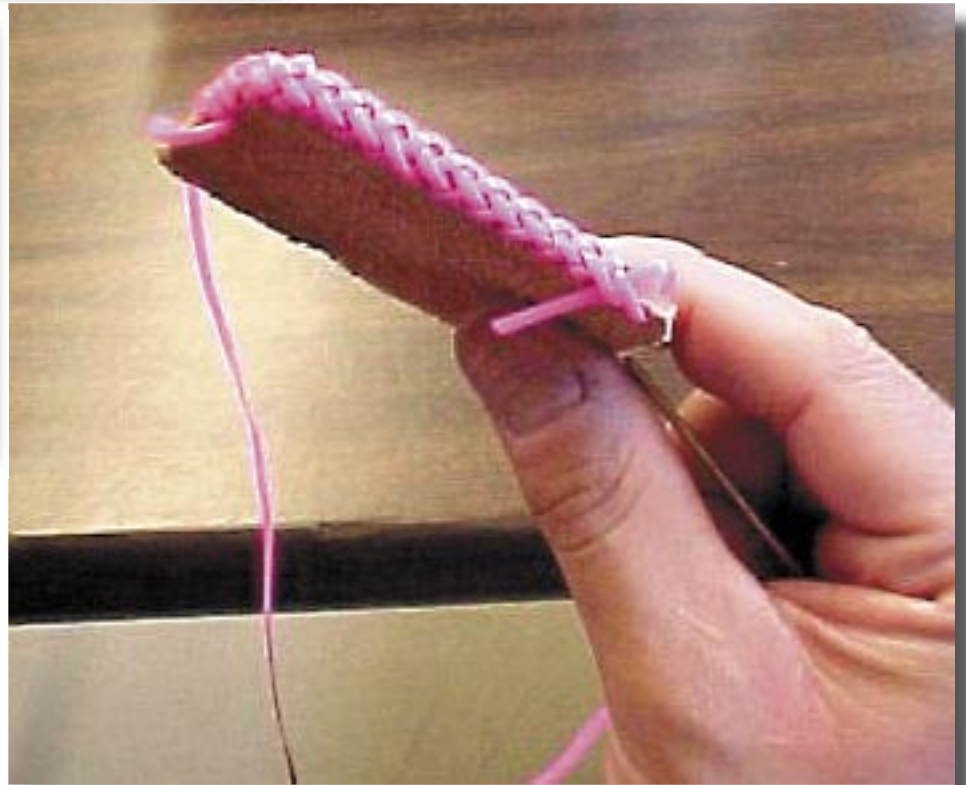




◀ Harry taught Mexican Round braid from the book illustrations

◀ Punching holes in the leather that we were going to practice lacing on ▼

▼ Showing how to make a practice board and you have to hold your tongue Juuuusssst soooo.





April Meeting Members



May Meeting at the North Seattle Tandy Store!

PSLAC Members Only Advertisement Page

Any PSLAC Member can advertise leather related products or services, subject to approval. Just send your text, picture and/or logo to stelmack@nwlink.com

MARQUIS UNIQUE LEATHER ARTISTRY, LLC

Paula and George Marquis



I make almost anything that can be made from leather and can be sewn by hand. I do not like sewing machines and cannot get along with them. Therefore, that excludes making clothing, which entails using very soft leather.

A lot of my works are 'bespoke items', meaning, one of, individual custom requests, ranging anywhere from books and folders to rifle scabbards, holsters and golf bags, fully carved and stamped, and any and all articles in between, which also includes saddles and harness.

I like to make articles that are practical, such as all kinds of bags (including brief cases, bible covers, etc.), belts with a challenge, mouse pads, tissue box holders, knife and sword sheaths, 11th Century bottles (sealed so they can be used as wine carafes), to various types of boxes (both useful and decorative) and other artistic decorations including such things as moulded bowls and vases as well as framed pictures.

Phone: (206)-523-6295

Email: marquispg@aol.com

DIAMOND P RANCH

Phil O'Neil

Custom Saddle Repair & Custom Chaps



Email: bjoneill@worldnet.att.net

DOC'S CUSTOM LEATHER & CARVER'S CORNER

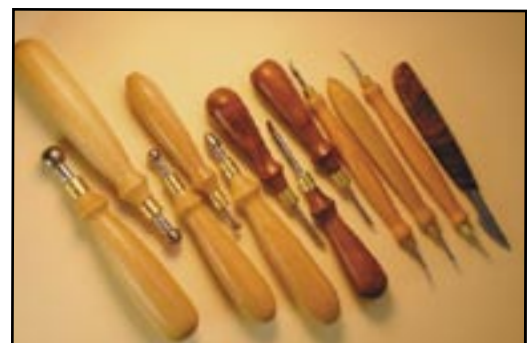
10 to 15% off every day!!!

Tools
Lacing
Supplies
Books/Videos
Patterns

Coming Soon!!!
Online Sharing Community
Free Patterns/Tips
And More!!!

Doc Hayes
1407 S. Socorro St. - Deming NM USA 88030
505-544-4692

dochayes@naturesw.net
<http://naturesw.net/dcileather.htm>



Norm Lynds Toolmaker

Mallets, Modelers, embossing tools,
lifters and others on request

Phone: (360) 668-7004

E-mail: NWLynds@Juno.com

Leather Company Advertisement Page



Toll Free:
(800) 541-3264
**Bee Natural
Leather-
care**

*The ultimate in
leather care prod-
ucts*

P.O. Box 820803, Vancouver, WA 98682-0018
(360) 891-7178, FAX: (360) 891-7166
Email: bnatura@pacifier.com

SPOTLIGHT on PRO-CARV — Working and Tooling Leather Formulation

DIRECTIONS:

Dilute concentrate with water: 1 part PRO-CARV to 10 parts water is recommended for carving and tooling. When immersing the leather for shaping or forming, add 8 oz. PRO-CARV to 3 gallons of water.

NO CASING IS NECESSARY

Leather can be immersed or sponged with this solution. PRO-CARV eliminates the need to case leather. PRO-CARV allows you to begin working with the leather after immersing for 3-5 minutes because of the very rapid penetration into even the thickest hide. Allow the surface to dry somewhat before beginning forming or carving.

**Contact MacPherson's, Hide Crafters, Goliger's
Leather, and The Leather Factory for any of the fine
Bee Natural Leather products.**

Advertisement

Hide Crafter Productions
*Offers a wholesale discount to
PSLAC members*

Brettun's Village Shops
10% discount to the PSLAC members

HERITAGE LEATHER COMPANY
*Offering a 20% discount to PSLAC
Members (15% on leather)*

The Leathercraft Store
Offering a Discount to PSLAC members

The Leather Factory
Offering a wholesale discount

TWLeather, Inc.
*Offering a wholesale discount to the
PSLAC members*

**PLEASANT VALLEY SADDLE
SHOP**
*Offering 20% discount to PSLAC
members*

RawHide Gazette
Editor / Publisher: Bob Stelmack
Co-Founders: Bill Churchill & General
Seymour
Treasurer/Secretary: Jeff Bement

**Copyright © 2002 PSLAC, Puget Sound Leather
Artisans Co-Op**

The RawHide Gazette is published monthly (12 times a year). Address for information and correspondence: PSLAC, c/o Jeff Bement, 3942 SW - 329th PL, Federal Way, WA 98023, U.S.A.

email: jeffbement@comcast.net

The RawHide Gazette is provided to the Puget Sound Leather Artisans Co-Op as a part of their membership benefits. Annual dues are \$24.00 USD per year.

All submissions are subject to editing for clarity and length. All articles submitted must be accompanied by name, address and permission of writer.

POSTMASTER: Send address changes to PSLAC, c/o Jeff Bement, 3942 SW - 329th PL, Federal Way, WA 98023, U.S.A.

Advertising Rates

The RawHide Gazette now offers advertising space to interested parties. Ad spaces are as follows:

1/4 Page or Business Card \$60 USD
1/2 Page \$110 USD
1 Full Page \$200 USD

These rates cover a six month time period. PSLAC members are entitled to a 25% discount. Leather companies supporting PSLAC are given free Business Card size advertisement, additional space at regular rates.

RG On-line

The Puget Sound Leather Artisans Co-Op can be found at:

<http://pslac.org>

If you need the **UserId** and **Password** for the subscription pages, just contact the RawHide Gazette at:

stelmack@nwlinc.com

-- of course the password information is free for the Puget Sound Leather Artisans Co-Op members. Those on the Internet still need send \$10 per year for a membership to:

Jeff Bement
3942 SW - 329th PL
Federal Way, WA 98023
U.S.A.

Your Photos here - if you send them to:

Web Editor: Bob Stelmack
7 Memorial Hall Drive
Wellingore LN5 0BD
England

Photos sent in to the PSLAC are used, space and focus permitting.

They are also posted, in living color, on the Internet.



Toll Free Order Lines:
1-(888) 263-5277
Fax: 1-(888) 263-5086

Hide Crafter Leathercraft

Offering wholesale discount to PSLAC members
ON-LINE CATALOG www.hidecrafter.com

7936 Camp Bowie West
Ft. Worth, TX 76116

George Hurst, Manager
email: hrcrafter@flash.net

Outside Washington
1-800-343-9949

(206) 328-0855
Fax: 328-0859

MACPHERSON

Leather Company

Leather, Shoe Finding and Saddlery

Offering a 30-40% off retail discount to the PSLAC members

Greg MacPherson

519 - 12th Avenue S.
Seattle, Washington 98144

Support our sponsors and take advantage of the PSLAC Membership Discounts

PSLAC Puget Sound Leather Artisans Co-op Home of the *Rawhide Gazette* <http://pslac.org>

Check on your Membership Status. Enter at least three characters of your name or email address and submit:

(Click here for Administration of the Membership Database)

Search this site by keywords (Note: the PDF Rawhide Gazette issues are not searched, but the index to the issues is.)

Latest issue of the Rawhide Gazette and the Members Only Issue

Interesting features:

PSLAC MEMBER Pages for the PSLAC Members	PSLAC Library: videos, books and articles (not available for checkout for members)	The current Membership Location Chart
Turnover Brush Pen Color Chart	Leather Stamping Tool Index	Meet one of our Members chosen at random
Random leather tip - if have got another one, send it in	Brochure describing PSLAC and the Rawhide Gazette (PDF format)	Leather MS Excel Spreadsheet used to estimate and price your project
Sample Bylaws for setting up a Co-Op		

PSLAC Membership Application

If you know someone who is interested in leathercraft — give them this information:
Puget Sound Leather Artisan Co-Op MEMBERSHIP APPLICATION

YOUR NAME: _____
STREET ADDRESS: _____
CITY, STATE, ZIP: _____
PHONE NUMBER: (____)____-_____
E-Mail: _____

Send this form along with \$24.00 (\$10.00 for Internet Membership) your first years dues to:

Jeff Bement
3942 SW - 329TH PL
Federal Way, WA 98023
U.S.A.

If you would like to subscribe to *The Leather Crafters & Saddlers Journal* through the Co-Op and include an additional \$29.00 for a one year subscription.

Start a Child in Leathercraft Today



Bill Churchill's Childrens Leather Program

Confidence
Observation
Practice
Imagination



Dusty Johnson

PLEASANT VALLEY SADDLE SHOP
1220 S. County Rd. 21
Loveland, CO 80537
Phone: (970) 669-1588
Fax: (970) 669-1589
E-Mail: dusty@pvsaddleshop.com
URL: <http://www.pvsaddleshop.com>

Offering a 20% discount to the PSLAC members

BRETTUNS VILLAGE LEATHER

**Selling odd lots, miscellaneous overstocks,
bargain leathers and leathercraft
accessories, all from Maine, only online**

Sides, Full Hides, Buckles, Key Rings, Laces, Thread,
Tools, Rivets, Scrap Pieces, Elk & Buffalo Scrap

Always Free Shipping in the 48 States

www.brettunsvillage.com

Leather Factory

Durham Hefta
Manager



Portland

Phone (503) 255-8818
Fax (503) 255-9011
Toll Free (888) 277-3360
www.leatherfactory.com

13221 N.E. Whitaker Way
Portland, OR 97230-1128

Offering a wholesale discount to the PSLAC members



SKYSHOOTER
(Dave)
(425)823-0110

TRADER'S
Stitching Posts at
Wholesale

SCREAM'N EAGLE
(Mike)
(360)658-1847

Tandy Leather Boise

JoAnne Tackitt, Manager
285 N. Orchard St.
Boise, ID 83706



Toll Free:
1-800-930-2850
(ph. 208-375-5589. Fax. 208-375-7168)

<http://www.tandy-leather.com>

Offering a wholesale discount to the PSLAC members

The Leather Factory

Kermit P. Creek
Manager



Billings

Phone (406) 256-1355
Fax (406) 256-1360
Toll Free (888) 277-3323
www.leatherfactory.com

115 North 30th Street
Billings, MT 59101-2032

Offering a wholesale discount to the PSLAC members



TWLeather, Inc.

Toll Free: 1-800-477-9923
2017A White Settlement Rd.
Fort Worth, TX 76107
(817) 877-5427, Fax (817) 877-5432

Offering a wholesale discount to the PSLAC members

Tandy Leather

Jim Linnell
Director of Operations



Toll Free:
1-888-890-1611

<http://www.tandy-leather.com>

Offering a wholesale discount to the PSLAC members



Leather Factory Spokane

28 West Boone Ave, Spokane, WA 99201
Phone: (509) 328-9939
Toll Free: 1-800-822-8437
Fax: (509) 326-7019

Offering a wholesale discount to the PSLAC members

www.leatherfactory.com



Email: jwleathercrafter@qwest.net

(503) 293-2833

Fax: 977-1762

J & W

Leather Crafters

Leather Repair: Saddles, Tack, Harness, Chaps, anything
Leather except clothing. We make new Items & Custom Orders

<http://www.users.qwest.net/~jnoecker/leather/>

Offering a 10% off retail discount to the PSLAC members

"It never hurts to ask!"

Joseph & Wendy Noecker

3912 SW Dolph CT
Portland, Oregon 97219

PSLAC

c/o Jeff Bement
3942 SW - 329th PL
Federal Way, WA 98023
U.S.A.

