

RawHide Gazette

Copyright © 2004 by PSLAC, All Rights Reserved

“Without question, the RawHide Gazette is by far the best and most informative and comprehensive Guild publications of all of them! You are to be commended for your very fine and professional efforts. Keep up the good work. With admiration”
/signed/
Al & Ann Stohman, December 1997

Volume 10, Issue 2

Puget Sound Leather Artisans Co-Op

July 2004

Hide Highlights

Page

- 1 Dusty Wert Presented with the 2004 Bill Churchill Award
- 2 Dusty’s Award
- 3 Ann Stohman Passes Away
- 4 Life-Eye Needle Tip
- 4 Thanks Dennis, Tandy Leather
- 4 Thanks Larry, Tandy Leather
- 4 Thanks Andy, Hide Crafters Leather
- 5 Tool Rack Insert by Norm
- 7 White River Bluegrass Festival
- 8 How to Bake George’s Winning Cake
- 9 Leather Badge Contest
- 9 Upcoming Leather Classes
- 11 Enumclaw Camporee
- 12 PowWow at the Daybreak Star Indian Cultural Center



Dusty Wert Presented with the 2004 Bill Churchill Award

Here are just some of the comments from the nomination forms for Dusty:

- ▶ “Dusty has been one of the “rocks” that founding members of PSLAC built the organization upon and has continued helping in so many ways.”
- ▶ “Dusty continues to help others learn leather craft and most importantly supports others with her expertise and encouragement.”
- ▶ “She is active in all facets of leather craft, especially teaching and demonstrating.”
- ▶ ”Takes the pictures for all the RawHide

Gazettes, annotates them and posts them on server for the publication of the PSLAC newsletter. Without Dusty’s extra efforts to supply pictures for the RawHide Gazette – the newsletter would not exist.”

- ▶ “Dusty most assuredly promotes leather craft by multiple fair entries and organizing, arranging and presenting demonstrations with and without other PSLAC assistance.”
- ▶ “Dusty writes articles for the RawHide Gazette on an almost monthly basis. She has more articles in the RawHide Gazette, than most of the other members in PSLAC.”
- ▶ “She has given a great deal of honest, open support of PSLAC from the very beginning.”

Meeting Announcement

NEXT MEETING on

Summer Break

Dusty's Award

Mark June 13, 2004 on your calendar because that is the day I became speechless.

That is a date I'm going to remember because I received the 3rd Annual Bill Churchill Award. What a thrill for me. I want to thank all of the members that voted for me.

I know one thing as I was listening to Ken talk about the winner of the award there was a moment when I thought he might be talking about me. I looked over at Paula and then my mind went to "mush" as I was hearing Ken say: "our own Dusty Wert...." I don't know anything more. Rich had my camera and he clicked off 3 pictures. The first one is most likely when I was looking at Paula. The second picture I managed to stand up and the third picture is when General presented me with the medal.

Bob made a believer out of me that I could write articles for the interest of the things I have learned along the way. He even gave me my own page to write what ever I wanted to. I keep thinking of my English teachers in school who would be laughing out loud if they knew I was writing anything for a renowned news letter. :o)

Going out and giving demos to the Scouts and at the Fair was just plan fun for me. I had fun thinking up the Hide Game and finding out that not only do the Scouts like the game the adults like the game too.

I am really fond of the members and have ever lasting friendships with some. I even have e-mail friends who I have gotten to know through the wonderful world of computers.

I want to tell you all what an honor it is to receive the **Bill Churchill Award**. Bill was a co-worker of mine. I was his student and above all else he and I were friends.

I do remember saying to the group after I received the award. Read about my thoughts in the gazette. Now aren't you glad I was speechless we would have been there for hours. :o)

Dusty



I didn't make a frame yet but I think I am displaying it pretty well. It is right by the front door, so everyone coming in and going out can see it.



October 30, 1997

Photo by Peter Main

Ann Stohlman Passes Away

This was Ann's favorite photo, she had it sitting beside her in Ashcroft. I took this photo in October 1997 in the kitchen of their new house at 'One Hundred Mile', north of where they lived for many years in Cache Creek.

It was always their dream to own lakeside property, and they did just that in July 1997. Al was not well at this time, but was still setting up their workbench and had yet to unpack many boxes. Al passed away five months later, and Ann remained at One Hundred Mile for a short time before moving to Ashcroft, in the Cache Creek area.

Yes, they are both sadly missed.

Peter Main

Email: petergmain@MSN.com

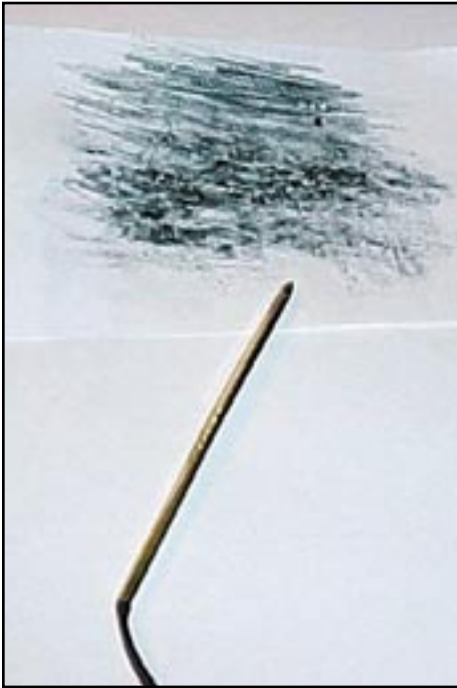


Photo given to Bill Churchill by Al & Ann

Life-Eye Needle Tip

I love the life-eye needle, but sometimes it is hard to get through the hole and X while lacing. Today while I was lacing I thought that the needle needed to be smoother. So I put jeweler's rouge on a business card and stropped it like I would a knife and continued to lace. WOW it made a big difference.

Dusty Wert



Ann Stohlman & Peter Main at the recent Sheridan Leather Show

▼◀◀ I received this note from Bill in February of 1999 and I was so proud that I amazed him, I printed it up and pin it by my computer. I don't remember what amazed him, but he really would be amazed with the award that is named in his honor and I received it.

Dusty

Thanks Dennis, Tandy Leather

You may also want to put in the next news letter to thank Dennis Glover for donating 300 rounders for the Bluegrass festival. He also gave a case of catalogs to hand out.

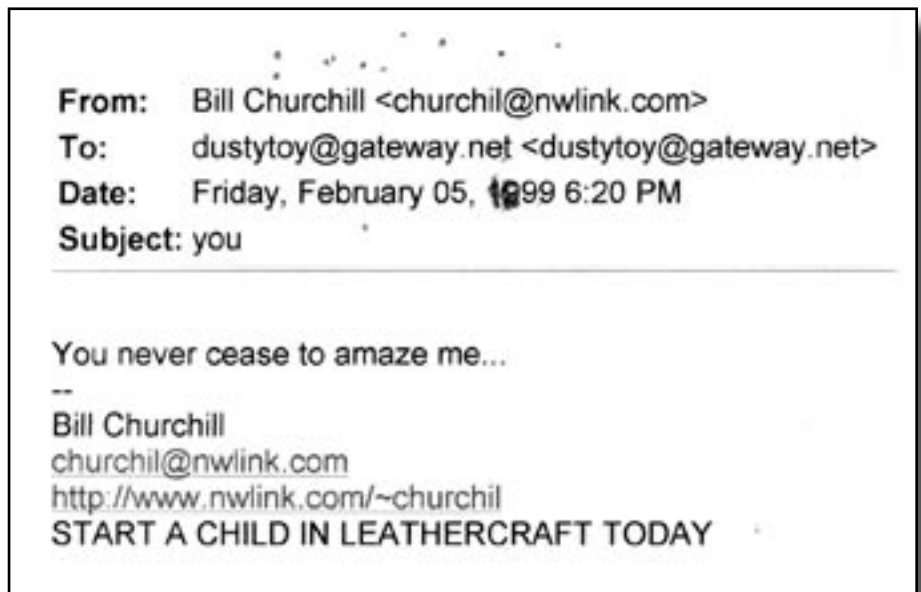
Thanks Larry, Tandy Leather

Larry also donated 350 rounders for the Bluegrass festival.

Thanks Andy, Hide Crafters Leather

Andy Stasiak with Hide Crafters is also working on a pamphlet to be able to hand out to folks. He is hoping to have it completed by the middle of July.

Barb Lourdes



Tool Rack Insert by Norm

I have been brow beat and shamed into doing an article for the RawHide Gazette. OK, here goes.

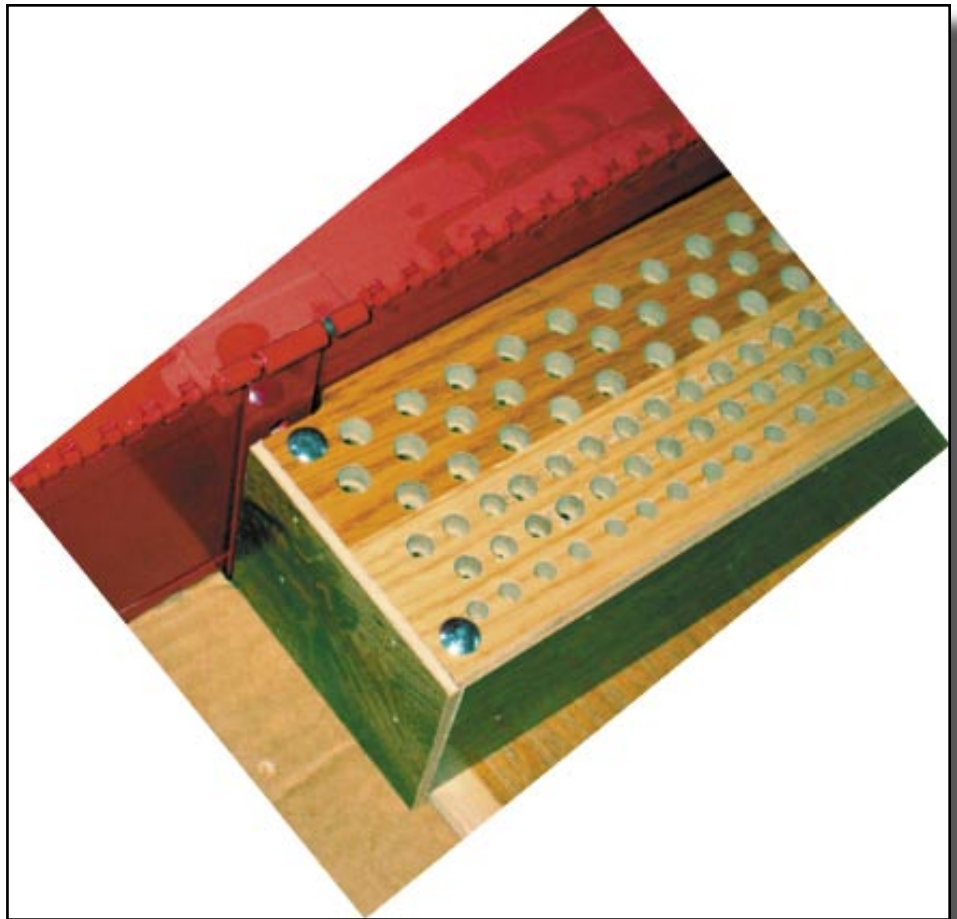
I will do a series (unless tarred and feathered) on tools, modifications, fixtures, and any other thing that comes to mind. We all have to carry things around, so here is one to carry stamps and swivel knives safely in a tool box.

Several years ago I saw an article about an insert for the Sears Model 653310 tool box. This tool box is 18.5 inches long, 9 inches wide, and 12 inches high. It has 2 drawers and a top tray that is over 5 inches deep when the lid is closed. This is plenty tall enough to hold stamps in the vertical position. I built one rack, then modified it, and just now finished making the third insert for the top to hold swivel knives and stamps. This box has lots of room, and with the insert, will hold all the tools and supplies necessary for just about any project.

Supplies needed for this project:

1. Sears Model 653310 tool box (Available in Sears stores, but I don't see it in the current tool catalog, but I have seen a similar one at Lowe's.)
2. 9 3/8" by 8 1/4" base plate of approx. 1/4" thick plywood or paneling (1) (when cutting the parts, leave the base plate a little oversize on the width, say 8 3/8)
3. 9 3/8" by 3 3/4" top and center plates of approx 1/2" paneling or similar (2) If plywood is used, use either hardwood or Finnish Birch. Fir or other softwood is not acceptable due to voids and their tendency to chip out. End product looks horrible. (I used some pieces of scrap manufactured flooring)
4. 3/16" by 3" carriage bolts (4 ea.)
5. 3/16" nuts (20 ea.) and washers (16 ea.)

Prior to drilling the holes tack the top and

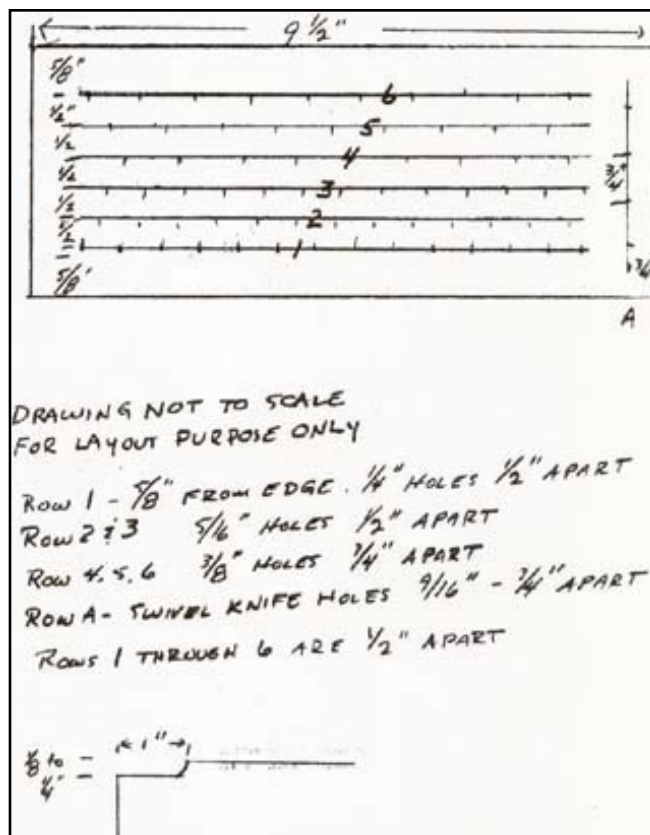


center plates together with brads. If possible, use either brad point or spade bits as

they leave cleaner holes than regular twist drills which are ground for use on metal.

Start with the holes for the swivel knife. Lay out 4 holes 3/4" from one end and spaced 3/4" apart. Use a 9/16" drill for these.

Lay out the rest of the holes now. Draw 6 lines 1/2" apart, starting 5/8" from the edge. With the swivel knife holes to the right, space 15 holes along the first line (nearest you) spaced 1/2 inch apart. The second row will have 14 holes, the third line will have 15, both rows spaced 1/2" apart. These are offset halfway so that the holes will be diagonal from each other instead of in a straight line for strength. The last 3 rows will also be offset, but spaced 3/4" apart with 10 holes per row.





This should leave 5/8" from the last line to the rear of the block.

With the layout complete, it is time to drill. To keep the lines straight, use a fence to slide the block along. (That is another project that I will do an article on for a future issue). The first row will be 1/4" holes. The second and third rows 5/16" and the final three rows 3/8".

After all the holes are drilled, attach the base plate with brads to the top pieces and drill the four 3/16" corner holes for the bolts. You will notice in the pictures that there is a strap in the center rear of the tool box. This is the strap which locks the 2 drawers in place when the lid is closed. I also use it to lock the tool insert in place. Cut a recess in the back left corner of the 3 pieces while they are still tacked together for the initial fit. This relief should be about 1/8" right by about 1" long. Right now is the time to final fit the base plate. Make sure that the relief cut is long enough to allow the strap a little clearance. Do not worry about the width of the clearance cut right now, just so that there is enough to get the base plate down. Slowly remove material from the front edge until the base plate can be put in place with a slight force fit. After this pull the pieces apart and clean up all the holes and edges to remove all the sharp edges, splinters, and other defects. You may slightly countersink the stamp holes.

Glue a piece of thin wood on the bottom piece under the swivel knife holes, so that the knives will not fall completely through. Leather discs can be put in the holes on top of the wood if you wish. If you are using unfinished material, now is the time to finish it. After the finishing, it is time to assemble

the rack.

First, mount the four carriage bolts to the top piece. After they are in place, put a washer and nut on each and snug them down. The carriage bolt has a square part just under the head, which will be pulled down into the top piece and prevent it from turning. Next screw a nut onto each bolt and screw it to within about 1 1/4" from the top piece. After all 4 nuts are on, add a washer to each. Now, loosen the top nuts a little to give a little wiggle room while mounting the center and base plates. Mount the center plate, then a washer and nut. The distance between the top and center plates is regulated by the swivel knife. Put a swivel knife in one of the holes and adjust the height to your liking. I like a little more than 1/8" of the barrel showing above the top plate. Do not

completely tighten the nuts yet, as the base plate has to be mounted. Before mounting it, countersink the under side so that the nut will be countersunk to the level of the bottom surface.

Screw nuts onto each of the bolts, add washers. Mount the base plate and bottom nut. Screw the nut on just enough that the nut and bolt make a flat surface. Now, press the base plate down and tighten it's top nuts. Tighten all the nuts now.

Now it is time to final fit the width of the relief cut. Put the rack in place and try to close the top. Watch the locking strap for binding. If there is not enough clearance, remove a little. This is a fit and try, and will take a little time. The strap should bind just enough when the lid is closed to keep everything in place. If there is too much pressure, the rack will be raised off the floor when the door is opened.

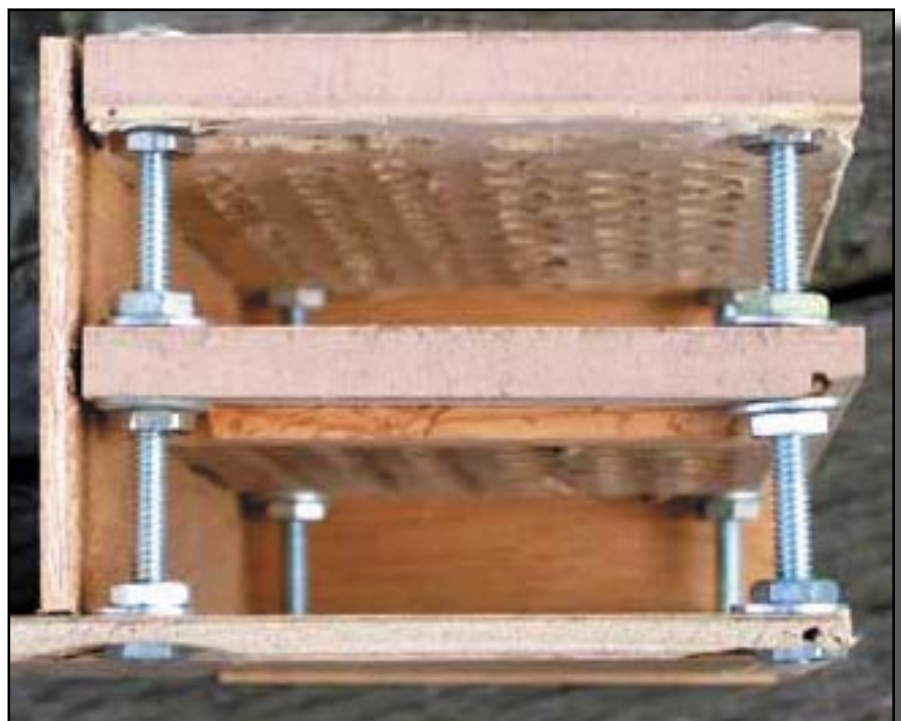
I then put walls on the exposed end and side to keep foreign objects out.

Now it is time to admire your handy work and load some tools.

Now, where is that next project?

Norman Lynds

Email: nwlynds@juno.com



White River Bluegrass Festival

On June 18th, 19th and 20th the city of Pacific and the Pacific Community Board hosted the White River Bluegrass Festival which was a lot of fun. The weather was hot and at times too windy to be able to do much, but hold down the fort so everything does not blow away. When we were trying to work on items in leather the leather dried out so fast that it was hard to keep the tooling leather wet.

I heard laughter more than once from the Pacific Police department as the wind picked up and I had to chase after paper or the leather project I was working on flying down the grassy field. Lets give them a hand as they helped out as need, worked hard and had lots of fun in the process. I think every one had a chuckle or two at the wind.

The "Thing" also tried to spread wings and fly but thanks to General he tied it down so it was not able to take flight again.



The music was really, really good. The food vendors were also good with a spaghetti dinner at the Senior's center and pancake breakfast in the park with all the fixings. It was more fun camping out and better sleeping outside than in a hot house. We had people of all ages stop by the booth and look at the "Thing" with items on display. I would like to thank everyone who donated items to be displayed on the "Thing". We had a few children come by and try their hand at putting stamps on leather rounders. Most people who stopped by were really interested in what the PSLAC was all about.

There were people there from all over the county and all walks of life. There were folks who stopped by who did leather work years before who are now thinking of getting back



into the art again as well as others thinking of getting in to the art.

feel free to stop by Pacific Days on July 23rd and July 24th.

I would like to thank **Dave Jensen** and **General Seymour** for helping out with the festival. The new out door gazebo with bug screen worked out nicely and will be used again in the future.

For information on Pacific days you can contact:

babslourdes2001@hotmail.com

Thank you.

The Festival was a success. Please

Barbara Lourdes



The Annual PSLAC Bar-B-Que ...and Dessert Contest



- mortar.
- 5 Place second cake on top of first cake.
- 6 Warm frosting mix (b above) about 15 seconds in microwave.
- 7 Slather frosting over cake and jam.
- 8 Cool.
- 9 Eat.



How to Bake George's Winning Cake

- 1 Purchase
 - (a) Betty Crocker Super Moist Chocolate Fudge Cake mixture
 - (b) Pillsbury Creamy Supreme Chocolate Fudge frosting mix
 - (c) Jar of raspberry jam.
- 2 Follow directions on (a) (above) **{EXACTLY!}** to make two 9 inch cakes.
- 3 Allow to cool. When cool, slice enough horizontally from one half.
- 4 Spread a layer of raspberry jam (item C above) on the cake that you have just beheaded. Think of this as



The Annual PSLAC Leather Sale



Upcoming Leather Classes

Joe Barth will teach a four day class over two weekends - July 24 & 25 and July 31 & August 1. The cost is \$200.00 for PSLAC members and \$250.00 for non members. We will be making a contoured leather box.

The **Bob Beard** class will be three days - August 20, 21 & 22. This class is the same price as the Barth class. For more information, or to sign up, call Len Madison at 425-438-1709 or e-mail to ismadison2@juno.com.



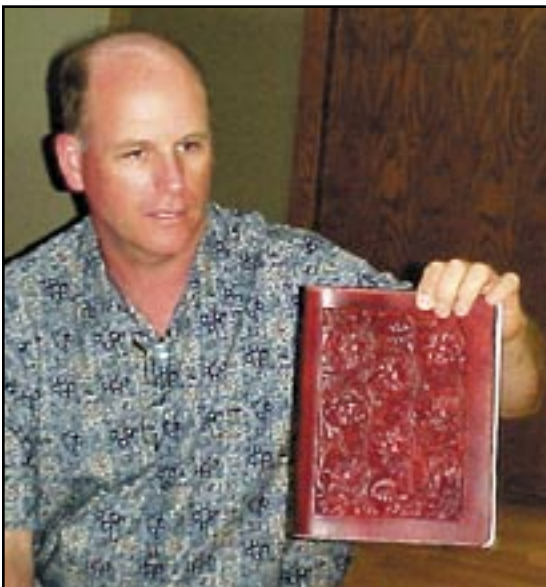
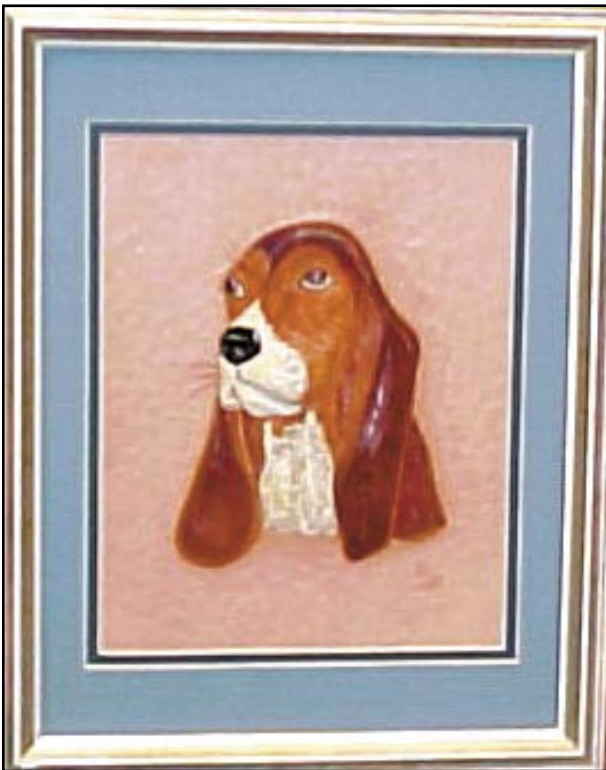
Leather Badge Contest

You make a business cardholder out of leather and send it to us **. Make sure you put your address with it so we can send it back. The size is a halfback (1/2 of a billfold) and the cards are credit card size so you should be able to see the card through an opening in the leather. Entries have to be in by October 10, 2004 for the October's meeting. We put it late so the members here can enter the leather badge in the fair and have it in time to get it back from the September fair. It must have a way of putting the holder on your shirt. The prize is a Pro swivel knife.

** PSLAC, c/o Barbara Lourdes, PO Box 1144, Auburn, WA, 98071, USA



PSLAC Show & Tell



Enumclaw Camporee

Camporee was held this year at the Enumclaw Fairgrounds, June 4-6, 2004.

The rain didn't dampen spirits of over 400 campers at this activity packed weekend.

Scouts, Scouters and visitors enjoyed the "Guardian One" helicopter from King County Sheriffs Department. They landed on the stadium field and gave tours of the craft.

There was a demo with NRA Firearms and Safety and King County K-9's Search & Rescue dogs. Explorers-Tukwila PD and EMT Explorers-Sea Tac Fire provided first aid. King County DNR Water Qual-



ity had a display for groundwater education. Mountain Men dealt with hatchet throwing, knives and hawk. Puget Sound Leather Artisans Coop (PSLAC) had a leather work shop with Scouts/Scouters making 3" rounders. Boeing BEARS presented a short wave radio "Field Day" type demo. There was a display of all the Award Knots in Boy Scouting.

Units sponsored games and contests. "The Cast Iron Chef", a Dutch oven competition, was held Saturday afternoon.

Order of the Arrow held a Brotherhood orientation, ceremony and various activi-



ties. Hyas Eena Chapter even had their own group camping as a unit.

Scout's Own was held Sunday. Flag ceremony, camp-wide clean-up, pack-up and final inspections were completed by mid-day Sunday.



This group of pictures is only a small sampling from the weekend.

YiS
Debbie Evans

PowWow at the Daybreak Star Indian Cultural Center

Daybreak Star Indian Cultural Center
Discovery Park ~ Seattle, Washington
MC ~ Arlie Neskahi
Arena Director ~ Robert Charles
Host Drum ~ Blacklodge, White Swan, WA



The **United Indians of All Tribes Foundation** holds this annual celebration on the beautiful grounds of Discovery Park, Seattle, Washington. The Pow Wow averages 400 - 600 dancers in full regalia, 30 drum groups, and 10,000 spectators which all come to celebrate the richness of the Native American culture.

In addition to the dancers, more than 60 vendors showcasing a wide array of Native American arts and crafts which include jewelry, carvings, intricate beadwork, artwork, tapes, CD's, and T-shirts.


Food concessions feature Indian Tacos, Fry Bread, hamburgers, hot-dogs and other goodies. On Saturday and Sunday there is a traditional Salmon Bake for \$10 beginning at 12 noon on both days.

There will be a Men's Traditional Special in Honor of Bernie Whitebear

- TRADITIONAL SINGING
- DANCE CONTESTS
- DRUM CONTEST
- ARTS AND CRAFTS
- FOOD BOOTHS
- SALMON BAKE

GRAND ENTRIES:
 Friday - 7:00 p.m.
 Saturday - 1:00 & 7:00 p.m.
 Sunday - 1:00


POW WOW



United Indians of All Tribes Foundation
 Daybreak Star Cultural Center
 19th Annual *SEAFAR* Indian Days
PowWow
July 16, 17 & 18, 2004
 Contest Dancing, Traditional Singing, Arts & Crafts,
 Princess Pageant, Salmon Bake (\$10), Food Booths
Everyone Welcome! Admission \$5.00
 Grand Entry Times: Friday • 7 PM
 Saturday • 1 & 7 PM Sunday • 1 PM
 Activities begin on Sat & Sun at 10AM
 Master of Ceremonies: Arlie Neskahi
 Arena Director: Robert Charles

**Host Drum:
Black Lodge Singers**

- Bernie Whitebear Men's Traditional Special
- Drum Contest



UNITED INDIANS
OF ALL TRIBES FOUNDATION

United Indians of All Tribes Foundation
 Daybreak Star Indian Cultural Center
www.unitedindians.com
 PO Box 99100 • Seattle, WA 98199
 Phone: 206.285.4425 Fax: 206.282.3604
 Directions to Daybreak Star: From I-5 take the 85th Street Exit. Continue West to 15th Avenue NW. Turn left onto 15th Avenue NW. Cross the Ballard Bridge. Take the first right to Emerson Street/Fisherman's Terminal. Follow the signs to Discovery Park/Daybreak Star Indian Cultural Center.
 For local hotel/motel accommodations, please call:
 * Emerald Inn 206.522.5000
 * Ramada Inn 800.435.0754
 * Best Value Seattle Inn 800.255.7932
 * Waterdown Hotel 866.944.4242
 No alcohol or drugs allowed.
 NO PETS allowed on Pow Wow grounds.
 Not responsible for loss, theft or personal injuries.

United Indians of All Tribes Foundation is a nonprofit organization dedicated to providing spiritual, social, economic and cultural programming to today's Native American people.

The Artwork: Eagle Raven, 1977 Marvin Oliver (Chinook/Mohave) Carved and painted by Gerald F. F. The Photograph: Ken Wagner

PSLAC Members Only Advertisement Page

Any PSLAC Member can advertise leather related products or services, subject to approval. Just send your text, picture and/or logo to stelmack@nwlink.com

MARQUIS UNIQUE LEATHER ARTISTRY, LLC

Paula and George Marquis



I make almost anything that can be made from leather and can be sewn by hand. I do not like sewing machines and cannot get along with them. Therefore, that excludes making clothing, which entails using very soft leather.

A lot of my works are 'bespoke items', meaning, one of, individual custom requests, ranging anywhere from books and folders to rifle scabbards, holsters and golf bags, fully carved and stamped, and any and all articles in between, which also includes saddles and harness.

I like to make articles that are practical, such as all kinds of bags (including brief cases, bible covers, etc.), belts with a challenge, mouse pads, tissue box holders, knife and sword sheaths, 11th Century bottles (sealed so they can be used as wine carafes), to various types of boxes (both useful and decorative) and other artistic decorations including such things as moulded bowls and vases as well as framed pictures.

Phone: (206)-523-6295

Email: marquispg@aol.com

DIAMOND P RANCH

Phil O'Neil

Custom Saddle Repair & Custom Chaps



Email: bjoneill@worldnet.att.net

DOC'S CUSTOM LEATHER & CARVER'S CORNER

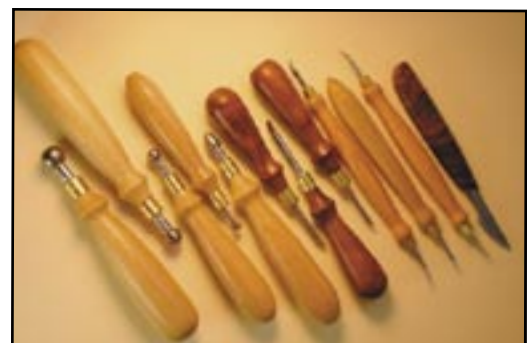
10 to 15% off every day!!!

Tools
Lacing
Supplies
Books/Videos
Patterns

Coming Soon!!!
Online Sharing Community
Free Patterns/Tips
And More!!!

Doc Hayes
1407 S. Socorro St. - Deming NM USA 88030
505-544-4692

dochayes@naturesw.net
<http://naturesw.net/dcileather.htm>



Norm Lynds Toolmaker

Mallets, Modelers, embossing tools,
lifters and others on request

Phone: (360) 668-7004

E-mail: NWLynds@Juno.com

Leather Company Advertisement Page



Toll Free:
(800) 541-3264
**Bee Natural
Leather-
care**
*The ultimate in
leather care prod-
ucts*

P.O. Box 820803, Vancouver, WA 98682-0018
(360) 891-7178, FAX: (360) 891-7166
Email: bnatura@pacifier.com

SPOTLIGHT on PRO-CARV — Working and Tooling Leather Formulation

DIRECTIONS:

Dilute concentrate with water: 1 part PRO-CARV to 10 parts water is recommended for carving and tooling. When immersing the leather for shaping or forming, add 8 oz. PRO-CARV to 3 gallons of water.

NO CASING IS NECESSARY

Leather can be immersed or sponged with this solution. PRO-CARV eliminates the need to case leather. PRO-CARV allows you to begin working with the leather after immersing for 3-5 minutes because of the very rapid penetration into even the thickest hide. Allow the surface to dry somewhat before beginning forming or carving.

**Contact MacPherson's, Hide Crafters, Goliger's
Leather, and The Leather Factory for any of the fine
Bee Natural Leather products.**

Advertisement

Hide Crafter Productions
*Offers a wholesale discount to
PSLAC members*

Brettun's Village Shops
10% discount to the PSLAC members

HERITAGE LEATHER COMPANY
*Offering a 20% discount to PSLAC
Members (15% on leather)*

The Leathercraft Store
Offering a Discount to PSLAC members

The Leather Factory
Offering a wholesale discount

TWLeather, Inc.
*Offering a wholesale discount to the
PSLAC members*

**PLEASANT VALLEY SADDLE
SHOP**
*Offering 20% discount to PSLAC
members*

RawHide Gazette
Editor / Publisher: Bob Stelmack
Co-Founders: Bill Churchill & General
Seymour
Treasurer/Secretary: Jeff Bement

**Copyright © 2002 PSLAC, Puget Sound Leather
Artisans Co-Op**

The RawHide Gazette is published monthly (12 times a year). Address for information and correspondence: PSLAC, c/o Jeff Bement, 3942 SW - 329th PL, Federal Way, WA 98023, U.S.A.

email: jeffbement@comcast.net

The RawHide Gazette is provided to the Puget Sound Leather Artisans Co-Op as a part of their membership benefits. Annual dues are \$24.00 USD per year.

All submissions are subject to editing for clarity and length. All articles submitted must be accompanied by name, address and permission of writer.

POSTMASTER: Send address changes to PSLAC, c/o Jeff Bement, 3942 SW - 329th PL, Federal Way, WA 98023, U.S.A.

Advertising Rates

The RawHide Gazette now offers advertising space to interested parties. Ad spaces are as follows:

1/4 Page or Business Card \$60 USD
1/2 Page \$110 USD
1 Full Page \$200 USD

These rates cover a six month time period. PSLAC members are entitled to a 25% discount. Leather companies supporting PSLAC are given free Business Card size advertisement, additional space at regular rates.

RG On-line

The Puget Sound Leather Artisans Co-Op can be found at:

<http://pslac.org>

If you need the **UserId** and **Password** for the subscription pages, just contact the RawHide Gazette at:

stelmack@nwlinc.com

-- of course the password information is free for the Puget Sound Leather Artisans Co-Op members. Those on the Internet still need send \$10 per year for a membership to:

PSLAC
c/o Barbara Lourdes
PO Box 1144
Auburn, WA 98071
USA

Your Photos here - if you send them to:

Web Editor: Bob Stelmack
7 Memorial Hall Drive
Wellingore LN5 0BD
England

Photos sent in to the PSLAC are used, space and focus permitting.

They are also posted, in living color, on the Internet.



Toll Free Order Lines:
1-(888) 263-5277
Fax: 1-(888) 263-5086

Hide Crafter Leathercraft

Offering wholesale discount to PSLAC members
ON-LINE CATALOG www.hidecrafter.com

7936 Camp Bowie West
Ft. Worth, TX 76116

George Hurst, Manager
email: hrcrafter@flash.net

Outside Washington
1-800-343-9949

(206) 328-0855
Fax: 328-0859

MACPHERSON

Leather Company

Leather, Shoe Finding and Saddlery

Offering a 30-40% off retail discount to the PSLAC members

Greg MacPherson

519 - 12th Avenue S.
Seattle, Washington 98144

Support our sponsors and take advantage of the PSLAC Membership Discounts

PSLAC Puget Sound Leather Artisans Co-op Home of the RawHide Gazette <http://pslac.org>

Check on your Membership Status. Enter at least three characters of your name or email address and submit:

(Click here for Administration of the Membership Database)

Search this site by keywords (Note: the PDF RawHide Gazette issues are not searched, but the index to the issues is.)

Latest issue of the RawHide Gazette and the Members Only Issue

Interesting features:

PSLAC MEMBER Pages for the PSLAC Members	PSLAC Library: videos, books and articles (most available for checkout for members)	The current Membership Location Chart
Turnover Brush Pen Color Chart	Leather Stamping Tool Index	Meet one of our Members chosen at random
Random leather tip - if have got another one, send it in	Brochure describing PSLAC and the Rawhide Gazette (PDF format)	Leather MS Excel Spreadsheet used to estimate and price your project
Sample Bylaws for setting up a Co-Op		

PSLAC Membership Application

If you know someone who is interested in leathercraft — give them this information:
Puget Sound Leather Artisan Co-Op MEMBERSHIP APPLICATION

YOUR NAME: _____
STREET ADDRESS: _____
CITY, STATE, ZIP: _____
PHONE NUMBER: (____)____-_____
E-Mail: _____

Send this form along with \$24.00 (\$10.00 for Internet Membership) your first years dues to:

PSLAC
c/o Barbara Lourdes
PO Box 1144
Auburn, WA 98071
USA.

If you would like to subscribe to The Leather Crafters & Saddlers Journal through the Co-Op and include an additional \$29.00 for a one year subscription.

Start a Child in Leathercraft Today



Bill Churchill's Childrens Leather Program

Confidence
Observation
Practice
Imagination



Dusty Johnson

PLEASANT VALLEY SADDLE SHOP
1220 S. County Rd. 21
Loveland, CO 80537
Phone: (970) 669-1588
Fax: (970) 669-1589
E-Mail: dusty@pvsaddleshop.com
URL: <http://www.pvsaddleshop.com>

Offering a 20% discount to the PSLAC members

BRETTUNS VILLAGE LEATHER

**Selling odd lots, miscellaneous overstocks,
bargain leathers and leathercraft
accessories, all from Maine, only online**

Sides, Full Hides, Buckles, Key Rings, Laces, Thread,
Tools, Rivets, Scrap Pieces, Elk & Buffalo Scrap

Always Free Shipping in the 48 States

www.brettunsvillage.com

Leather Factory

Durham Hefta
Manager



Portland

Phone (503) 255-8818
Fax (503) 255-9011
Toll Free (888) 277-3360
www.leatherfactory.com

13221 N.E. Whitaker Way
Portland, OR 97230-1128

Offering a wholesale discount to the PSLAC members



SKYSHOOTER
(Dave)
(425)823-0110

TRADER'S
Stitching Posts at
Wholesale

SCREAM'N EAGLE
(Mike)
(360)658-1847

Tandy Leather Boise

JoAnne Tackitt, Manager
285 N. Orchard St.
Boise, ID 83706



Toll Free:
1-800-930-2850
(ph. 208-375-5589. Fax. 208-375-7168)

<http://www.tandy-leather.com>

Offering a wholesale discount to the PSLAC members

The Leather Factory

Kermit P. Creek
Manager



Billings

Phone (406) 256-1355
Fax (406) 256-1360
Toll Free (888) 277-3323
www.leatherfactory.com

115 North 30th Street
Billings, MT 59101-2032

Offering a wholesale discount to the PSLAC members



TWLeather, Inc.

Toll Free: 1-800-477-9923
2017A White Settlement Rd.
Fort Worth, TX 76107
(817) 877-5427, Fax (817) 877-5432

Offering a wholesale discount to the PSLAC members

Tandy Leather

Jim Linnell
Director of Operations



Toll Free:
1-888-890-1611

<http://www.tandy-leather.com>

Offering a wholesale discount to the PSLAC members



Leather Factory Spokane

28 West Boone Ave, Spokane, WA 99201
Phone: (509) 328-9939
Toll Free: 1-800-822-8437
Fax: (509) 326-7019

Offering a wholesale discount to the PSLAC members

www.leatherfactory.com



Email: jwleathercrafter@qwest.net

(503) 293-2833

Fax: 977-1762

J & W

Leather Crafters

Leather Repair: Saddles, Tack, Harness, Chaps, anything
Leather except clothing. We make new Items & Custom Orders

<http://www.users.qwest.net/~jnoecker/leather/>

Offering a 10% off retail discount to the PSLAC members

"It never hurts to ask!"

Joseph & Wendy Noecker

3912 SW Dolph CT
Portland, Oregon 97219

Taking I-90

From Auburn: come north on Hwy167, or I-5, then I-405 north, then onto I-90, going east:

From Everett: South on I-5 to 405 South, or to I-90, going east:

From I-90 get off on exit 17/Front St., and bear right onto Front Street. At the third stoplight, turn left onto E Sunset Way, then see below:



Taking Hwy 18 from around Auburn to Issaquah

Get on Hwy 18 going East, from Auburn, it's about 12 miles to Maple Valley, then at about 2 ½ miles after Maple Valley, look for the turn off to Issaquah Hobart Rd SE, turn onto ramp 276th Ave SE and go 0.6 miles, bear left onto Issaquah Hobart Rd SE. It's about 8 ½ miles from there to Issaquah. Hobart becomes Front Street S, which takes you into downtown Issaquah. Turn right onto E Sunset Way, then see below:

After turning onto E Sunset Way:

go two blocks (past the Police and Fire Stations), turn left onto 2nd Ave SE, go past the old Senior Center building on your left, and a baseball field, then left onto NE Creekway, go almost to the railroad tracks. The new Issaquah Valley Senior Center is a brick building on your left, parking in front of it. There is also parking behind, from Sunset, turn left into the parking area, right before the Police Station (look for a large parking sign on your left), and follow it till you see a kids play ground. Address: 75 NE Creekway, Issaquah, WA 98027

**PSLAC
c/o Barbara Lourdes
PO Box 1144
Auburn, WA 98071
USA**

