

# Raw Hide Gazette

Copyright © 2005 by PSLAC, All Rights Reserved

"Without question, the Raw Hide Gazette is by far the best and most informative and comprehensive Guild publications of all of them! You are to be commended for your very fine and professional efforts. Keep up the good work. With admiration"  
/signed/  
Al & Ann Stohlman, December 1997

Volume 10, Issue 10

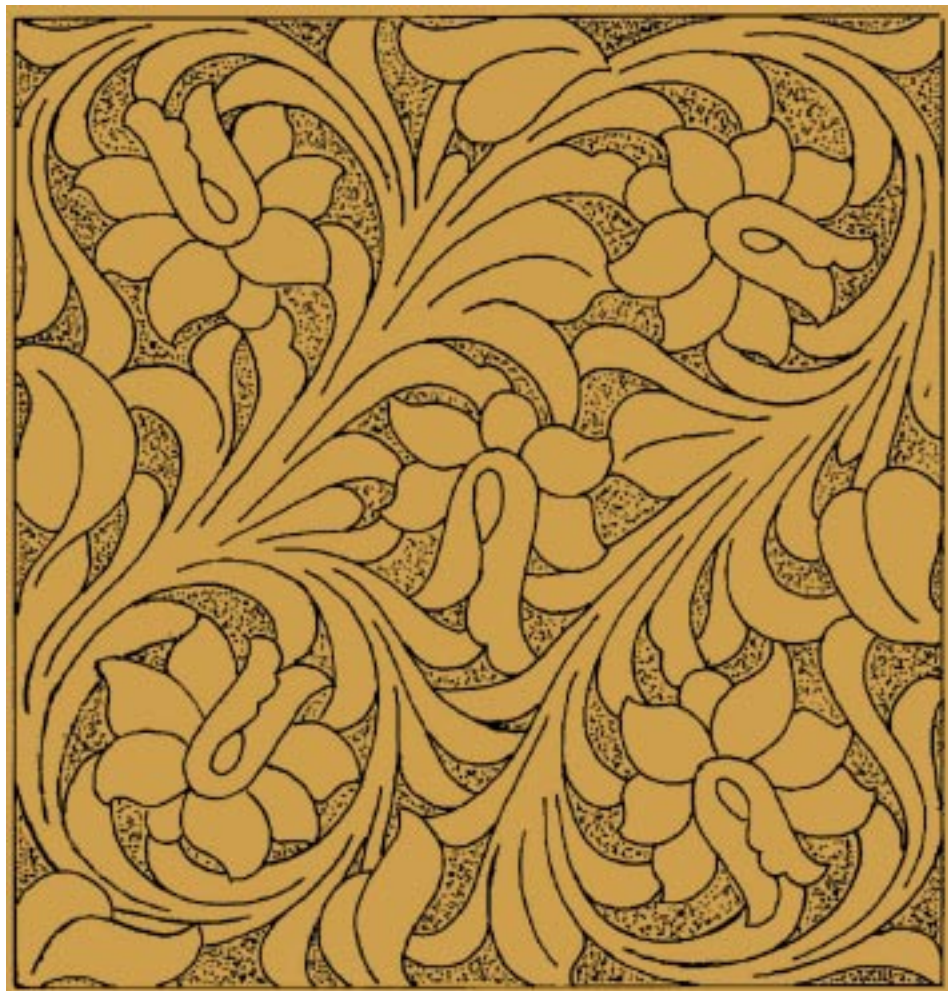
Puget Sound Leather Artisans Co-Op

March 2005

## Hide Highlights

Page

- 1 Sheridan Mystique Preview
- 2 NORTH
- 2 SOUTH
- 2 The Schedule
- 3 Barb's Silhouette Demo
- 3 White River Bluegrass Festival
- 3 Future Scout Demo
- Volunteers Needed
- 3 Cascade Mountain Men
- 4 9th Western Leather-workers Trade Show
- 4 Sixth International Leather Conference
- 5 PSLAC "East Side Style"
- 5 Moulded Leather Bowls & Plates Workshop in April
- 6 PSLAC "North End Style"
- 6 PSLAC Show & Tell "North End Style"
- 7-8 PSLAC Show & Tell "North End Style"
- 9 The Bill Churchill Children's Leather Program 4th Annual AWARD Nomination Form for the Year 2005



### Meeting Announcement

**NEXT MEETING on**  
**March 13th**  
**at**  
**noon-5pm**  
*Barb's Silhouette Carving*

(see last page for map)

## Sheridan Mystique Preview

by Ron Ross

A little more about the book, **Sheridan Mystique**. I have included an expanded version of it, as the first pages, going into more detail than I did in **Sheridan Designs**. This section also pictures the various tools, as did the one in **Sheridan Designs**. Then, I have included the three tool modification pages, which I

redrew, for clearer instructions. In addition, I will be including the written instructions that I shared with the members on how to make some of the other tools. After all, if the old-timers could make their own tools, often by necessity, then, in this day and age, some may want to make their own, for the experience of having done so, as well as to save a few dollars, if, as many are, on a short budget.

As of this time, the carving of the patterns

is underway. Currently, I have 6 of the 12 belt design plates completed. That leaves me with 6 more belts, 6 checkbook covers, 4 pocket notebook covers and 8 wallet backs to carve. Whew! So, pictures of those will be a little while in coming. I have not gotten around to contacting the printer, to quote on my cost, thus permitting me to establish a selling price.

Here is what I am going to be doing. I had originally thought of releasing a limited edition of 50 copies, promoting it at Sheridan, in May. However, due to a conflict, I will not be going to Sheridan. So, I have decided to still release a limited edition of 50, numbered and signed copies, to who else, but to members of IILG, on a first come, first served basis. These Limited Edition copies will have the photocarve patterns in color. The later printing will have all in gray scale, except for the page on the technique I use in applying the Sheridan style finish. To begin with, I will be marketing the books myself, unless one of the suppliers likes it well enough to pick it up. Will tell you more later. For now, as a 'teaser', how about one of the checkbook cover tracing patterns? Actual size of the checkbook cover is 7 inches by 7 1/4 inches. This is my rendition of a daffodil.

#### Ronald G. Ross

1SG USArmy (ret)

mail: rosaddlery@mchsi.com

URL: www.rosaddlery.com

Member, IILG

Vice President, IILG

Chairperson, IILG Grants Committee

Certified Master, IFoLG

Author of

East of Sheridan

Sheridan Designs

Authorized Dealer

Tippmann Industrial

## NORTH

The PSLAC members that live in the northern part of Seattle get together for breakfast on the last Friday of each month at Elmer's Restaurant at Lynnwood.

February 25th breakfast was attended by **Len Madison, Sister Rachel, Judy and Don Ferguson, Norm and Letty Lynds and George and Paula Marquis.**

Animated discussions on leather and other matters kept the breakfast lively.

Don brought in a practice sample of **Tandy's** new dye he tried out. On the small project he found it very satisfactory and it buffed up to a nice luster, but, because only small portions can be done at one time, he still has to try it out on a larger project and see how it works. More on those results next time.

Since Norm seems to spend more time lately with making tools than actually doing leatherwork, he decided he'd better practice to keep his hand in. He decided to do the elk picture again that we did with Bob Beard a couple of years ago and it is coming along nicely, better, I think, than the first time he did it. Looking forward to seeing the finished project.

The Friday breakfast for March came up in discussion as it will fall on Good Friday and most of us are busy with other things that day, so it was decided to have it the Friday before, that makes it Friday the 18th March.

We'd love to see some Southern PSLAC members at the Northern PSLAC breakfast, all are welcome. 10:00am is a good time as the rush hour traffic is gone and most people are at work

## SOUTH

The **PSLAC South Breakfast** is the 4th Saturday of the month and was held on February the 26th at 8:30am at the Homestead Restaurant on South Tacoma Way. Bill set up the breakfast many years ago. I took a vote to see if anyone wanted the time to be changed and the majority rules we are keeping it at 8:30am.

We do more socializing down south and had a wonderful time talking to each other. Today we had 14 members show up with spouses. **Debby and Monty Evans, Jeff Bement and lady friend, Barb Lourdes, Dave Jensen, General and Ann Seymour, DJ and Clem Estrada, Harry Smith, Ken Eriksen, Rich and Dusty Wert.** The picture was taken right after Ken left. Sorry, but I thought of having the waitress **Cassandra** take the picture after Ken was gone.

We plan on going to the North breakfast some Friday soon. Hope to see some of the North come down to the South Breakfast. We did get some PSLAC business done however. I'm going to make a schedule of the coming events with PSLAC and have them

for the RawHide Gazette. So you will be able to know what is scheduled for each meeting and when the North and South Breakfasts date and time. Please check the schedule each month because, there maybe a change in the meeting date, time or place.

## The Schedule

**March Meeting: >> March 13, 2005, Issaquah Senior Center**

- ▶ 12 Noon, 2 hour workshop >> Barb Lourdes will demo Silhouette Carving.
- ▶ 2:00pm Meeting >> General Seymour will conduct the meeting.
- ▶ Time permitting >> Harry Smith will conduct training in Basic Leather Techniques. If you have a tool and would like to know how to use it—bring it to the meeting.

**March North Breakfast >> March 18, 2005**

- ▶ 10:00am at Elmer's Restaurant (3411 - 184th St. SW, Lynnwood.

**March South Breakfast >> March 26, 2005**

- ▶ 8:30am at Homestead Restaurant on South Tacoma Way.

**April Meeting >> April 10, 2005, Issaquah Senior Center**

- ▶ 12 Noon, 2 hour workshop >> Rawhide Braiding.
- ▶ 2pm Meeting >> Ken Eriksen will conduct the meeting.
- ▶ Time permitting >> Harry Smith will conduct training in Basic Leather Techniques. If you have a tool and would like to know how to use it—bring it to the meeting.

**April North Breakfast >> April 29, 2005**

- ▶ 10:00am at Elmer's Restaurant at Lynnwood.

**April South Breakfast >> April 23, 2005**

- ▶ 8:30am at Homestead Restaurant on South Tacoma Way.

February's meeting was at **MacPherson's** in Seattle. Fun for all shopping on a Sunday—what a treat! **Ken** conducted the meeting and there were new members who showed up and I want to welcome those new members. Thank you Barb Lourdes for taking pictures for me.

**Dusty Wert**



## Barb's Silhouette Demo

At breakfast yesterday it was decided I will be doing the demo for next months meeting being held at Issaquah Senior Center. It will be on Silhouette Carving. Please bring the following tools and items:

1: Scraps leather 3 x 5 like a half back or larger, rounders for small stuff.

2: The seven basic tool set, hammer, swivel knife with whatever blade they normally use, as many types of back rounder and matting tools as they wish and tracing film. I will supply some patterns.

Barb Lourdes

## White River Bluegrass Festival

The City of Pacific will be having again the 2nd annual White River Bluegrass Festival on June 17-19, 2005, and camping is available. Also, the annual Pacific Days will be July 16 & 17, 2005

Volunteers will be needed for the Puget

Sound Leather Artisans Co-op booth.

Barb Lourdes

## Future Scout Demo Volunteers Needed

A Scout Camporee Saturday, June 5, 2005 from 1:00 p.m. - 5:00 p.m. for both Boy and Girl Scouts ages 11-17 and Venture Crews age 14-20.

Two Cub Scout demos coming up July 12-15 and July 19-22 for 90 to 120 boys ages 9-10. This is in Dens of 10 to 14 and will be held in Maple Valley, WA.

Barb Lourdes

## Cascade Mountain Men

**Cascade Mountain Men Muzzle Loading Arms and Pioneer Craft Show**, March 12 and 13, 2005, 9:00 am to 5:00 pm, both days, **Evergreen State Fairgrounds at Monroe, WA**. Admission is \$5.00 per day, under 12 in free.

Emphasizes the American Colonial period

up through the 1840's fur trade.

This show only happens once per year and even if you don't shoot black powder guns or attend mountain men rendezvous, it is a great visual show, with all the vendors and a lot of the local blackpowder gun clubs dressed in period clothing. This is the largest show of it's kind, with over 300 traders and exhibitors. See demonstrations of blacksmithing, hand weaving, wool spinning, bow and arrow making and a historic fashion show of colonial, Native American, and mountain man clothing.

Also a good place to get rawhides (come early on Saturday for this, the rawhide tends to sell out quick), deer skins, beads and beading supplies, how-to books, hand made knives, and lots more.

Hope to see you there.

[www.cascademountainmen.org](http://www.cascademountainmen.org)  
[www.evergreenfair.org/sitemap.html](http://www.evergreenfair.org/sitemap.html)

Redelk (Ken Eriksen)

The screenshot shows a website for the "Annual Gun Show". At the top, there is a dark banner with the text "Annual Gun Show" in a serif font. To the right of the banner, the date "02/01/05" is displayed. Below the banner is a navigation menu with buttons for "Home", "About CMM", "Annual Gun Show" (which is highlighted in green), "Newsletter", "Photo Gallery", "Favorite Links", "CMM History", and "Contact Information". The main content area features the title "Annual Muzzle Loading Arms and Pioneer Crafts Show" and a paragraph: "We had a fantastic show last year! See pictures of the Fashion Show!". Below this is a promotional message: "Get outfitted for a Rendezvous! Get off the Couch! For many years now, more than 300 traders and exhibitors from across the West, and as far away as Tennessee, have brought their arms, trade goods, arts, crafts, and supplies to this show - The LARGEST of its KIND!". The event details are listed as: "March 12 and 13, 2005 - At the Evergreen State Fairgrounds (map) in Monroe, Washington, Saturday and Sunday 9:00 am to 5:00 pm". A list of featured items includes: "Over 300 Traders Featuring: Muzzle Loading Firearms (Original, Replicas, Custom, Kits), Custom Gun Makers, Muzzle Loading Gun Parts, Trade Goods, Leather Goods, Period Clothing, Arts & Crafts, Books, and Furs and Leathers". Demonstrations listed are: "Blacksmithing, Wool Spinning, Wood Carving, and Occupied Primitive Camp (tentative)". The "Historic Fashion Show: Pre-1840 Period Clothing" includes "Colonial, American Indian, and Mountain Man". At the bottom of the page, a footer contains the same navigation menu as the top left.

## 9th Western Leather-workers Trade Show

Friday, Saturday, Sunday, March 18-20, 2005, Seaside Park, Ventura County Fairgrounds, 10 W Harbor Blvd, Ventura, CA 93001

Discover the multi-faceted world of leather with scores of fellow leathercrafting trade show attendees at the 9th Western Leather-workers Trade Show, March 18-20, 2005. Open to the public with free admission, the show is located at Seaside Park in fun-filled Ventura, California on the Pacific Ocean.

This is the biggest leather show to hit the Pacific Coast in over 3 years. An estimated 30 to 40 companies are estimated to be on hand and trade show officials are setting the attendance goal to be 750 people overall. From the curious beginner to the experienced full-time leatherworker and artisan this trade show is one of the nation's leading resources to help leather enthusiasts meet with numerous industry experts to answer questions and service orders. Leather, tools, stitching & sewing machines, saddle trees, saddle & harness hardware, shoe findings, silver and brass hardware and more will be represented and on hand for cash & carry. Also, instructional materials such as DVD's, videos and books are available for purchase.

The show provides substantial depth in the workshop and seminar department. Beginning Monday, March 14th a wide selection of instruction for all skill levels taught by leading artisans and instructors from across the nation. Basket stamping, chap construction, wet leather forming, figure carving, leather picture frame construction, saddle making and pricing your work are just a sample of classes. Registration fees apply. Free information packets are available. Be sure to sign up today to discover more of the talent that lies within you. Never crafted leather before? As a bonus starting Thursday the 17th there will be free classes for beginners.

*"Sponsored and organized in its entirety by **The Leather Crafters & Saddlers Journal**, this is prime time to meet with so many other folk who enjoy the rewards of leathercraft", according to **David Reis**, show manager. "Our 9th Western Show and 30th show overall, this event is designed to help people advance their skills and gain*

*invaluable networking dimensions in one, fun-filled weekend for the whole family. Plus, we are re-instating 'show and sell'. Bringing the show to full cycle for the maker, the show and sell helps crafters sell their finished leather items to anxious buyers which in turn helps makers continue to purchase goods and services from the vendors. We look forward to meeting everyone in attendance. You might even win a prize drawing or two!"*

For more information contact the friendly staff at:

The Leather Crafters & Saddlers  
Journal  
331 Annette Ct.  
Rhineland, Wisconsin 54501  
USA

URL:  
[www.leathercraftersjournal.com](http://www.leathercraftersjournal.com)

Ph: 1-888-289-6409 (715-362-5393)

The Journal is the world's leading bi-monthly publication dedicated in its entirety for the education and promotion of leathercraft and leatherwork.

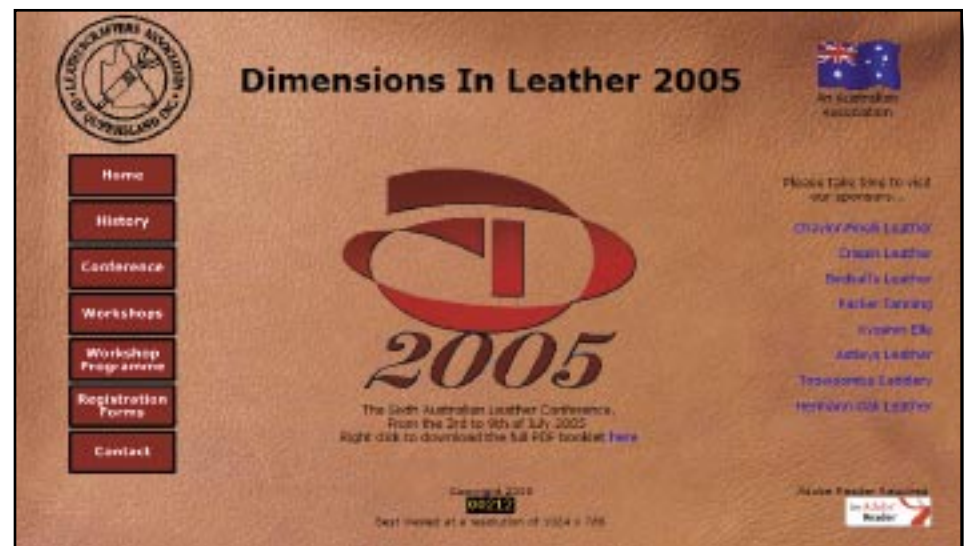
## Sixth International Leather Conference

- ▶ 11 of the worlds best tutors
- ▶ Choice of 32 exciting new hands on workshops
- ▶ Evening demonstrations
- ▶ Trade show
- ▶ "STARS" party night
- ▶ Saturday night banquet dinner/dance
- ▶ Live in accommodation
- ▶ Excellent meals
- ▶ Fantastic venue

Another brilliant Australian International Leather Conference, with tutors: **Rene Berends** from Germany, **Zinnia Shu** from Taiwan, **Jim Jackson, Joe Barth** and **Peter Main** from America, **Yukiko Mizoguchi** and **Akiko Okada** from Japan, **Trevor Lamb** from New Zealand, **Robert Witthahn, Les Williams** and **Jules Godfrey** from Australia who are willing to share their many talents and new ideas with you.

If you have attended previous conferences you will be aware of the high standards set, the quality of workshops and the wonderful feeling of comradeship felt by all who attend. If you have not previously attended these conferences, let me assure you that it will be an experience you will treasure for years to come. Not only will you make new friends, you will be taught many new skills to advance your leather art / craft.

For information on the conference please



BRISBANE, AUSTRALIA  
3rd to 9th JULY, 2005

DIMENSIONS IN LEATHER 2005

- ▶ Six days of leather

check our web site:

[www.dimensionsinleather.com](http://www.dimensionsinleather.com)

Should you have any queries, please contact Cherryl.



The Conference is held at a University Campus in beautiful Brisbane with live-in accommodation for the six days with all meals included and the food is great! Of course there is an Aussie bar set up, and this stays open for socializing until the last is to leave.

This is the greatest event for learning such a diverse range of leather skills, and having too much fun.

I estimate the cost of the six days in Brisbane to be around \$1,100 USD. This includes: accommodation, all meals, all classes chosen and material costs for those classes.

This has to be the best value in the world today of "leather learning".

**Peter Main**

## PSLAC "East Side Style"

Hey Bob,  
Haven't touched base with you or PSLAC in quite awhile. I've got to say that the Gazette is something I look forward to each month and it just gets better and better.

**Jackie** is working on a job in a private home, creating 6 leather panels for a custom Bar. Each scene is representative of a Northwest animal, Elk, Moose, Bear, Wolf, Lynx and Cougar. It's a pretty good job for her that I bid out at \$3500. The largest two panels were 25x30. Hope to have some photos to send when done.

As for myself, I've been a little slack on the leather. Did manage to tool myself a new belt though. There has been some interest in learning and we are getting a group together again down at the Leather Factory. We've set up to meet once a month to share and learn.

Next meeting I will be showing what little I know about tooling a horse head (following Bills direction). That'll take a couple of sessions. I've made a survey for those that want to list by preference what they'd like to cover. Only 5 of us so far but its open to all. I've told them about the great group in Seattle and it looks like I may be able to swing some members into PSLAC. I actually started the classes for those who bought kits for Xmas but the feeling is that they want to pound away and the folks at

the store are hearing of others who would like some help.

Guess I had better end this. I might be in the Seattle Area the weekend of March 11, if so I'm going to try and make a meeting if they are still on the 2<sup>nd</sup> Sunday

**Woody Collins**

## Moulded Leather Bowls & Plates Workshop in April

with Paula Marquis



The workshop will be held in Tacoma at Dusty's place on Saturday the 23<sup>rd</sup> April two weeks after the April PSLAC meeting and is an all day workshop from 9.00a.m. to 5.00p.m. We will all troop to a nearby Restaurant for lunch.

The address to Dusty's place will be supplied at the March meeting to those who register for the workshop. For those who cannot attend the meeting and register for the workshop the address can be obtained from Paula via e-mail - marquispg@aol.com or from Dusty via e-mail - dustytoy7@aol.com.

For those interested in doing the workshop, it would be helpful to attend the March Meeting at Issaquah on Sunday the 13<sup>th</sup>, to register their attendance and obtain any information they need to know that I have omitted to list here.

Norm Lynds has kindly agreed to make a number of Antler Hammers, which he will have available for sale at the March meeting. If there is a shortfall he will endeavour to obtain some more antlers and have the rest ready by the April meeting.

There are two pieces of leather required

for each bowl/plate and they need to be large enough to drape over the article to be moulded with at least a 1" overlap all the way around.

For those making bowls that are, say, 6" x 3" or less, I recommend a lighter leather (6/7oz) for the inside and the heavier leather (8/9oz) for the outside.

Any bowls or plates larger than the above size, it is better to use the heavier leather for inside and outside. I would recommend from 8 to 10 oz.

Plates/bowls ideal for the job should be fairly thick glass or crystal so they can take a bit of handling without breaking and **MUST** have the pattern cut into the outside. I will bring a sample to the March meeting.

The cost of the workshop will be \$25.00 for the day per person.

### Supplies Needed:

- Horn/antler Hammer**
- Leather**
- Board** - Size depending on how large or small the article to be moulded, but, will need to have at least several inches clearance all around.
- Bowl/plate** - Heavy Glass or Heavy Crystal.
- Nails** - at least 3/4" long, not more than 1-1/2" long, and a fair quantity.
- Small Headed Hammer** - for nails.
- Contact Cement and Brush**

The workshop is scheduled as an all day affair and we will probably finish about 5.00p.m. (sometimes we are a little over time).



Bottell by Paula

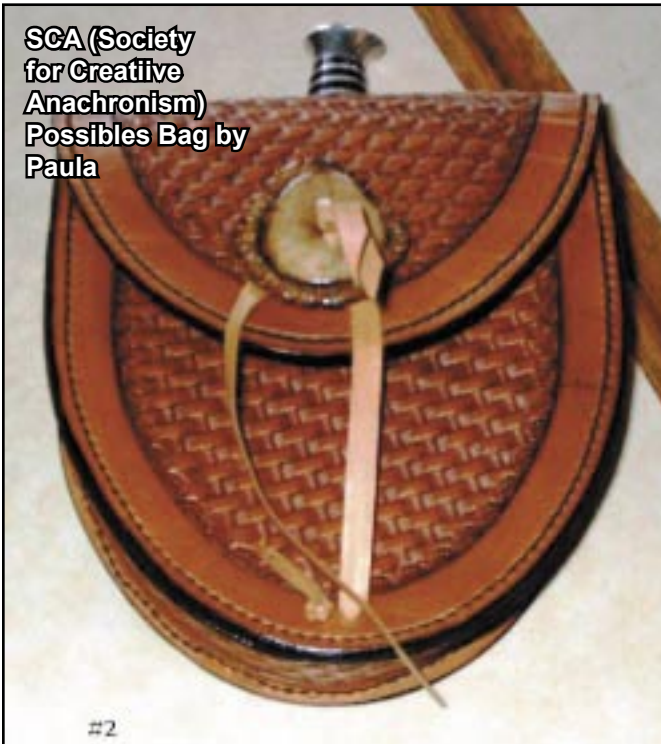


### PSLAC "North End Style"

There is now a P.S.L.A.C. breakfast on the north end , it is held on the last Friday of the month . On the 28th of January Ann and I had the opportunity to attend. It is held at Elmer's Restaurant at the back of the Alderwood Mall. A total of eleven people were in attendance. There was a good show and tell , lots of good conversation and last, but not least, a lot of good food. The south end breakfast better watch out—the north end is getting more people than they are!

General Seymour

SCA (Society for Creative Anachronism) Possibles Bag by Paula



SCA Possibles Bag by Paula



Belt by Paula



PSLAC Show & Tell "North End Style"





Group picture

#9

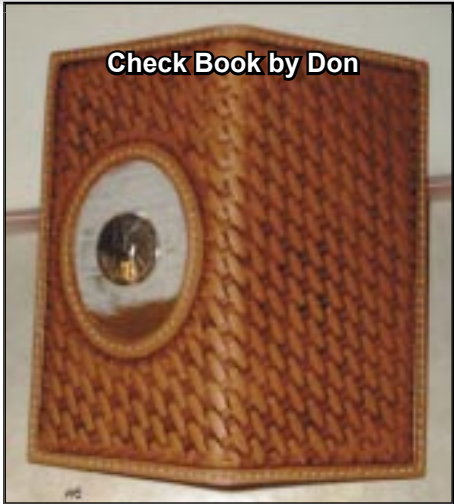


Tooling practice Sheet

#8



New tools for Under Cutting by Norm



Check Book by Don

#7

# PSLAC Show & Tell "North End Style"

# MacPherson Leather

## Meeting at MacPherson's



**Butch Edison's Cat Purse**



On Sunday February 13, 2005 at 2:00 pm we had our meeting at **MacPherson's Leather** in Seattle, Washington. **Greg MacPherson** was our host. The leather industry has been doing well through out the year. MacPherson Leather has employees who are willing to help and answer any questions you may have. For questions about dying and finishing leather, at MacPherson please feel free to ask **Joe Butcher** he has a lot of experience in leather. If you are interested in taking classes in leather or have any other leather questions please feel free to contact Greg MacPherson.

It is almost time to nominate another person for the annual **Bill Churchill** award.

It is only six months till entries for the PUYALLUP FAIR are due. Why not start now and avoid the RUSH? If you know any kids get them to enter in the fair.

**Barbara Lourdes**



**Dave Puls Balloon Notebook**

# PSLAC Show & Tell "South End Style"



# The Bill Churchill Children's Leather Program 4th Annual AWARD Nomination Form for the Year 2005

PSLAC Mission is...

- To further the enjoyment of leather and to help others learn more about the real joy of leather - working as a group and sharing ideas and knowledge of leather, its uses and how to use it. To pass on this knowledge to others and then have them pass it on to the new members who come later.
- Form a fellowship with peers, young and old, expert and non-expert, anyone who has the love of leather.
- To show and demonstrate to people outside the Co-Op leather in all forms and try to help them to become interested in leather...to share...time and talent, with all others in the Co-Op -- especially the young.

The **Bill Churchill Children's Leather Program Award** is designed to recognize PSLAC members who are caring on those principles of the PSLAC mission.

Nominations can be made by any PSLAC member and should be in writing. The following page form can be used, or any other written method is acceptable.

The nominations should give reasons and examples why they feel the nominee should receive an award.

- How have they helped further the craft?
- Are they active in PSLAC activities?
- Do they help promote leather craft by fair entries, demonstrations, etc.
- Have they helped generate interest in others to pursue the craft.
- Are they willing to share knowledge for the benefit of all.

The PSLAC directors will make the decision for each year and the award will be a once in a person's lifetime. The award will include a medal similar to the Stohlman award with a replica of Bill's hands and his axiom: **C.O.P.I.**

(confidence–observation–practice–imagination).

Send your **nominations by April 30th, 2004** to:

PSLAC  
c/o Barbara Lourdes  
PO Box 1144  
Auburn, WA 98071  
U.S.A.

...or... **email to:** [stelmack@nwlink.com](mailto:stelmack@nwlink.com)

**RULES:**

1. The award may only be won once in a lifetime.
2. The Directors will evaluate the nominations and decide on a winner – one each year.
3. If one of the Directors is nominated, that Director will be replaced by another PSLAC member for the purposes of selecting a winning nomination.
4. The award will be give out at the summer PSLAC Annual Bar-B-Que.
5. Nominations will be due by April 30<sup>th</sup>.

# The Bill Churchill Children's Leather Program AWARD Nomination Form for the Year 2004

Give examples for each category:

**Nomination for:** \_\_\_\_\_

▶ **How have they helped further the craft?**

▶ **Are they active in PSLAC activities?**

▶ **Do they help promote leather craft by fair entries, demonstrations, etc.?**

▶ **Are they willing to share knowledge for the benefit of all?**

**Name of Nominator:** \_\_\_\_\_

**Date:** \_\_\_\_\_



# PSLAC Members Only Advertisement Page

Any PSLAC Member can advertise leather related products or services, subject to approval. Just send your text, picture and/or logo to [stelmack@nwlink.com](mailto:stelmack@nwlink.com)

## MARQUIS UNIQUE LEATHER ARTISTRY, LLC

Paula and George Marquis



I make almost anything that can be made from leather and can be sewn by hand. I do not like sewing machines and cannot get along with them. Therefore, that excludes making clothing, which entails using very soft leather.

A lot of my works are 'bespoke items', meaning, one of, individual custom requests, ranging anywhere from books and folders to rifle scabbards, holsters and golf bags, fully carved and stamped, and any and all articles in between, which also includes saddles and harness.

I like to make articles that are practical, such as all kinds of bags (including brief cases, bible covers, etc.), belts with a challenge, mouse pads, tissue box holders, knife and sword sheaths, 11th Century bottles (sealed so they can be used as wine carafes), to various types of boxes (both useful and decorative) and other artistic decorations including such things as moulded bowls and vases as well as framed pictures.

Phone: (206)-523-6295

Email: [marquispg@aol.com](mailto:marquispg@aol.com)

## DIAMOND P LEATHER SHOP PHIL O'NEILL

Saddlery: New, Used-Repair

Custom Made Leather Goods

25051 - 180 Ave SE, Kent WA 98042

*Hours By Appointment Or By Chance*

(252) 631-9770

FAX (253) 631-4780

This Is A One-Man Outfit

All Custom & Repairs Are Crafted By Myself

Email: [bjoneill@worldnet.att.net](mailto:bjoneill@worldnet.att.net)

## DOC'S CUSTOM LEATHER & CARYER'S CORNER

**10 to 15% off every day!!!**

Tools  
Lacing  
Supplies  
Books/Videos  
Patterns

**Coming Soon!!!  
Online Sharing Community  
Free Patterns/Tips  
And More!!!**

Doc Hayes  
1407 S. Socorro St. - Deming NM USA 88030  
505-544-4692

[dochayes@neturesw.net](mailto:dochayes@neturesw.net)  
<http://neturesw.net/docleather.htm>



## Norm Lynds Toolmaker

Mallets, Modelers, embossing tools,  
lifters and others on request

Phone: (360) 668-7004

E-mail: [NWLynds@Juno.com](mailto:NWLynds@Juno.com)

# Leather Company Advertisement Page



**Toll Free:**  
**(800) 541-3264**  
**Bee Natural  
Leather-  
care**  
*The ultimate in  
leather care prod-  
ucts*

P.O. Box 820803, Vancouver, WA. 98682-0018  
(360) 891-7178, FAX: (360) 891-7166  
Email: [bnatura@pacifier.com](mailto:bnatura@pacifier.com)

## **SPOTLIGHT on PRO-CARV — Working and Tooling Leather Formulation**

### **DIRECTIONS:**

Dilute concentrate with water: 1 part PRO-CARV to 10 parts water is recommended for carving and tooling. When immersing the leather for shaping or forming, add 8 oz. PRO-CARV to 3 gallons of water.

**NO CASING IS NECESSARY**

Leather can be immersed or sponged with this solution. PRO-CARV eliminates the need to case leather. PRO-CARV allows you to begin working with the leather after immersing for 3-5 minutes because of the very rapid penetration into even the thickest hide. Allow the surface to dry somewhat before beginning forming or carving.

**Contact MacPherson's, Hide Crafters, Goliger's  
Leather, and The Leather Factory for any of the fine  
Bee Natural Leather products.**  
*Advertisement*

**Support our sponsors and take advantage  
of the PSLAC Membership Discounts...**



**Toll Free Order Lines:**  
**1-(888) 263-5277**  
**Fax: 1-(888) 263-5086**

***Hide Crafter Leathercraft***

***Offering wholesale discount to PSLAC members  
ON-LINE CATALOG [www.hidecrafter.com](http://www.hidecrafter.com)***

7936 Camp Bowie West  
Ft. Worth, TX 76116

George Hurst, Manager  
email: [hcraft@flash.net](mailto:hcraft@flash.net)

**Outside Washington  
1-800-343-9949**

**(206) 328-0855  
Fax: 328-0859**

**MACPHERSON**

***Leather Company***

Leather, Shoe Finding and Saddlery

***Offering a 30-40% off retail discount to the PSLAC members***

**Greg MacPherson**      **519 - 12th Avenue S.  
Seattle, Washington 98144**

**...more sponsors on the following page...**

**RawHide Gazette**

**Editor / Publisher:** Bob Stelmack  
**Co-Founders:** Bill Churchill & General  
Seymour  
**Treasurer/Secretary:** Barbara Lourdes

**Copyright © 2002 PSLAC, Puget Sound Leather Artisans Co-Op**

The RawHide Gazette is published monthly (12 times a year). Address for information and correspondence: PSLAC, c/o Barbara Lourdes, PO Box 1144, Auburn, WA, 98071, USA

email: [babslourdes2001@hotmail.com](mailto:babslourdes2001@hotmail.com)

The RawHide Gazette is provided to the Puget Sound Leather Artisans Co-Op as a part of their membership benefits. Annual dues are \$24.00 USD per year.

All submissions are subject to editing for clarity and length. All articles submitted must be accompanied by name, address and permission of writer.

**POSTMASTER:** Send address changes to PSLAC, c/o Barbara Lourdes, PO Box 1144, Auburn, WA, 98071, USA

### **Advertising Rates**

The RawHide Gazette now offers advertising space to interested parties. Ad spaces are as follows:

1/4 Page or Business Card ..... \$60 USD  
1/2 Page ..... \$110 USD  
1 Full Page ..... \$200 USD

These rates cover a six month time period. PSLAC members are entitled to a 25% discount. Leather companies supporting PSLAC are given free Business Card size advertisement, additional space at regular rates.

## **RG On-line**

The Puget Sound Leather Artisans Co-Op can be found at:

<http://pslac.org>

If you need the **UserId** and **Password** for the subscription pages, just contact the RawHide Gazette at:

[stelmack@nwlink.com](mailto:stelmack@nwlink.com)

-- of course the password information is free for the Puget Sound Leather Artisans Co-Op members. Those on the Internet still need send \$10 per year for a membership to:

PSLAC  
c/o Barbara Lourdes  
PO Box 1144  
Auburn, WA 98071  
USA

*Your Photos here - if you send them to:*

Web Editor: Bob Stelmack  
7 Memorial Hall Drive  
Wellingore LN5 0BD  
England

*Photos sent in to the PSLAC are used, space and focus permitting.*

*They are also posted, in living color, on the Internet.*





## Dusty Johnson

PLEASANT VALLEY SADDLE SHOP  
1220 S. County Rd. 21  
Loveland, CO 80537  
Phone: (970) 669-1588  
Fax: (970) 669-1589  
E-Mail: dusty@pvsaddleshop.com  
URL: <http://www.pvsaddleshop.com>

*Offering a 20% discount to the PSLAC members*

## BRETTUNS VILLAGE LEATHER

Selling odd lots, miscellaneous overstocks,  
bargain leathers and leathercraft  
accessories, all from Maine, only online

Sides, Full Hides, Buckles, Key Rings, Laces, Thread,  
Tools, Rivets, Scrap Pieces, Elk & Buffalo Scrap

**Always Free Shipping in the 48 States**

[www.brettunsvillage.com](http://www.brettunsvillage.com)

## Leather Factory

Durham Hefta  
Manager



Portland

Phone (503) 255-8818  
Fax (503) 255-9011  
Toll Free (888) 277-3360  
[www.leatherfactory.com](http://www.leatherfactory.com)

13221 N.E. Whitaker Way  
Portland, OR 97230-1128

*Offering a wholesale discount to the PSLAC members*



SKYSHOOTER  
(Dave)  
(425)823-0110

TRADER'S  
Stitching Posts at  
Wholesale

SCREAM'N EAGLE  
(Mike)  
(360)658-1847

## Tandy Leather Boise

JoAnne Tackitt, Manager  
285 N. Orchard St.  
Boise, ID 83706



Toll Free:  
**1-800-930-2850**  
(ph. 208-375-5589. Fax. 208-375-7168)

<http://www.tandy-leather.com>

*Offering a wholesale discount to the PSLAC members*

## The Leather Factory

Kermit P. Creek  
Manager



Billings

Phone (406) 256-1355  
Fax (406) 256-1360  
Toll Free (888) 277-3323  
[www.leatherfactory.com](http://www.leatherfactory.com)

115 North 30th Street  
Billings, MT 59101-2032

*Offering a wholesale discount to the PSLAC members*



## TWLeather, Inc.

Toll Free: **1-800-477-9923**  
2017A White Settlement Rd.  
Fort Worth, TX 76107  
(817) 877-5427, Fax (817) 877-5432

*Offering a wholesale discount to the PSLAC members*

## Tandy Leather

Jim Linnell  
Director of Operations



Toll Free:  
**1-888-890-1611**

<http://www.tandy-leather.com>

*Offering a wholesale discount to the PSLAC members*



## Leather Factory Spokane

28 West Boone Ave, Spokane, WA 99201  
Phone: (509) 328-9939  
Toll Free: 1-800-822-8437  
Fax: (509) 326-7019

*Offering a wholesale discount to the PSLAC members*

[www.leatherfactory.com](http://www.leatherfactory.com)



Email: [jwleathercrafter@qwest.net](mailto:jwleathercrafter@qwest.net)

(503) 293-2833

Fax: 977-1762

J & W

Leather Crafters

Leather Repair: Saddles, Tack, Harness, Chaps, anything  
Leather except clothing. We make new Items & Custom Orders

<http://www.users.qwest.net/~jnoecker/leather/>

*Offering a 10% off retail discount to the PSLAC members*

"It never hurts to ask!"

Joseph & Wendy Noecker

3912 SW Dolph CT  
Portland, Oregon 97219

**Taking I-90**

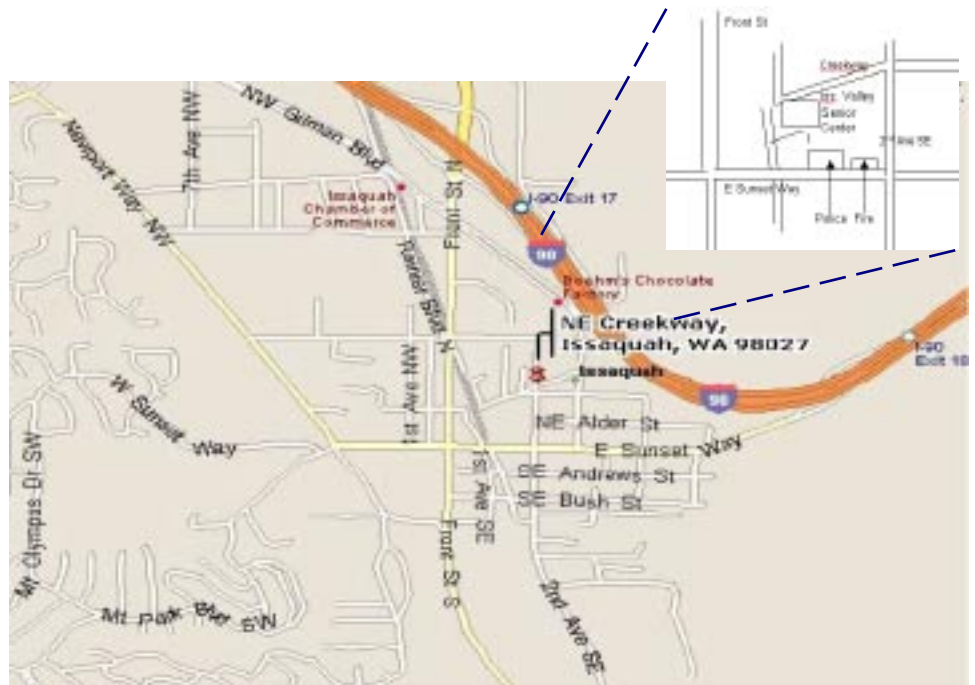
**From Auburn:** come north on Hwy167, or I-5, then I-405 north, then onto I-90, going east:

**From Everett:** South on I-5 to 405 South, or to I-90, going east:

From I-90 get off on exit 17/Front St., and bear right onto Front Street. At the third stoplight, turn left onto E Sunset Way, then see below:

**Taking Hwy 18 from around Auburn to Issaquah**

Get on Hwy 18 going East, from Auburn, it's about 12 miles to Maple Valley, then at about 2 ½ miles after Maple Valley, look for the turn off to Issaquah Hobart Rd SE, turn onto ramp 276th Ave SE and go 0.6 miles, bear left onto Issaquah Hobart Rd SE. It's about 8 ½ miles from there to Issaquah. Hobart becomes Front Street S, which takes you into downtown Issaquah. Turn right onto E Sunset Way, then see below:



**After turning onto E Sunset Way:**

go two blocks (past the Police and Fire Stations), turn left onto 2<sup>nd</sup> Ave SE, go past the old Senior Center building on your left, and a baseball field, then left onto NE Creekway, go almost to the railroad tracks. The new Issaquah Valley Senior Center is a brick building on your left, parking in front of it. There is also parking behind, from Sunset, turn left into the parking area, right before the Police Station (look for a large parking sign on your left), and follow it till you see a kids play ground. Address: 75 NE Creekway, Issaquah, WA 98027

---

---

**PSLAC  
c/o Barbara Lourdes  
PO Box 1144  
Auburn, WA 98071  
USA**

