

# Raw Hide Gazette

Copyright © 2006 by PSLAC, All Rights Reserved

“Without question, the Raw Hide Gazette is by far the best and most informative and comprehensive Guild publications of all of them! You are to be commended for your very fine and professional efforts. Keep up the good work. With admiration”  
/signed/  
Al & Ann Stohman, December 1997

Puget Sound Leather Artisans Co-Op

May 2006

## Hide Highlights

### Page

- 2 Leather, Suede, Skins, Inc.
- 4 April Meeting's Show & Tell
- 5 Ken's Sewing Seminar - Part 2
- 6 Bob's Cylinder Sewing
- 7 Upcoming Workshops.
- 8 What is it?
- 8 Book Press Reconditioning
- 8 Upcoming Workshops
- 9 Upcoming Events
- 9 The Schedule
- 10 PSLAC South Saturday Breakfast
- 10 Paula's Rose Carving Class



**Mark your calendar:  
Annual PSLAC  
Bar-B-Que, Leather  
Garage Sale and  
Bill Churchill Award  
ceremony on  
Sunday, June 11th!**

*(See page four for details on the lens case.)*



### Meeting Announcement

**NEXT MEETING on  
Sunday, May 7th  
at  
noon-5pm**

*Dusty Wert (Block Dyeing)*

(see last page for map)

SPECIAL NOTE - THE MAY MEETING HAS BEEN SCHEDULED FOR THE 7TH AS THE NORMAL MEETING DATE WILL BE MOTHER'S DAY. - 7TH MAY 2006.



## Leather, Suede, Skins, Inc.

261 West 35th Street, 11th Floor, New York, NY 10001  
Tel: (212) 967-6616 Fax: (212) 564-5759

### About Us

#### Leather:

calfskin  
cowhide  
deerskin  
goatskin  
kidskin  
lambskin  
sheepskin  
stretchable leather  
washable leather

#### Suede:

calfskin  
goatsuede  
lamb suede  
pigskin  
split

New York's #1 leather supplier, **Leather, Suede, Skins, Inc.** is known worldwide in the leather industry for the largest selection of conventional and inspiring skins for garment, accessories, upholstery, home furnishing and shoe markets.



Being a leader in performance and a trustworthy and reliable supplier, **Leather, Suede, Skins, Inc.** has achieved recognition in the industry for the dedication and commitment to customers, paying utmost importance to the service offered. Backed by over 50 years of combined experience and solid tradition of professionalism and proficiency, we are proud to say that we have a deep understanding of what leather is all about, and we are able to satisfy all customers with top quality leather in different grades and price points.

**Leather, Suede, Skins, Inc.** is always present at all major shows around the globe. Constantly searching for different and innovative solutions to satisfy the needs of the market, **Leather, Suede, Skins, Inc.** brings the latest trends from around the world every season. Extraordinary NY showroom makes it possible for the customer to gain access to the best of leathers from Africa, South America, Asia and Europe. Lambskin, cowhide, sheepskin, goatskin, calfskin, hair-on, shearlings and more are stocked in a wide range of colors. Different finishes like pearlized, printed, embossed, patent, perforated, distressed and others are all available.

Contact Us

Home

## Leather, Suede, Skins, Inc.

(ed. note: PSLAC has another new sponsor and wrote this note: **"We would be delighted to sponsor PSLAC and offer 10% off to all PSLAC members. This year our company is celebrating our 20th Anniversary. We supply leather & suede to upholstery, interior, accessories, garment and shoe markets. We carry a large number of leather and suede skins in a wide variety of colors. We bring the latest trends to our customers every season and we sell globally. Our company's slogan is 'The Source for the World's Most Beautiful Leather'. Our website is a great presentation of what Leather, Suede, Skins, Inc has to offer. Our inventory is extensive, and we accommodate small and large orders from our NY warehouse. Please, tell me if you would like to receive our color cards/samples with our information pack. I would be happy to send them. We have fabulous leather and fantastic quality.**

Sincerely,  
**Faina Golub**")

### From the web site:

The Source for the World's Most Beautiful Leather

New York's #1 leather supplier, Leather, Suede, Skins, Inc. is known worldwide in the leather industry for the largest selection of conventional and inspiring skins for garment, accessories, upholstery, home furnishing

and shoe markets.

Being a leader in performance and a trustworthy and reliable supplier, Leather, Suede, Skins, Inc. has achieved recognition in the industry for the dedication and commitment to customers, paying utmost importance to the service offered. Backed by over 50 years of combined experience and solid tradition of professionalism and proficiency, we are proud to say that we have a deep understanding of what leather is all about, and we are able to satisfy all customers with top quality leather in different grades and price points.

Leather, Suede, Skins, Inc. is always present at all major shows around the globe. Constantly searching for different and innovative solutions to satisfy the needs of the market, Leather, Suede, Skins, Inc. brings the latest trends from around the world every season. Extraordinary NY showroom makes it possible for the customer to gain access to the best of leathers from Africa, South America, Asia and Europe. Lambskin, cowhide, sheepskin, goatskin, calfskin, hair-on, shearlings and more are stocked in a wide range of colors. Different finishes like pearlized, printed, embossed, patent, perforated, distressed and others are all available.

Leather, Suede, Skins, Inc. is ready to accommodate both small and large orders straight from NY warehouse for immediate shipment. Special orders take from 2-4 weeks for delivery. Our skins are found today in every product, from shoes, to

garments, to accessories, to upholstery, to home furnishings. You will know quality of Leather, Suede, Skins, Inc.'s hides is great, for our slogan is "The Source for the World's most beautiful leather!"

Leather, Suede, Skins, Inc.  
261 West 35th Street  
11th Floor, New York, NY 10001  
Tel: (212) 967-6616  
Fax: (212) 564-5759  
www.leathersuedeskins.com  
Email: leather.suede.skins@att.net

#### Leather:

calfskin  
cowhide  
deerskin  
goatskin  
kidskin  
lambskin  
sheepskin  
stretchable leather  
washable leather

#### Suede:

calfskin  
goatsuede  
lamb suede  
pigskin  
split  
stretchable suede

#### Hair-On:

Shearlings/Fur:  
calfskin  
cowhide rugs  
fox  
goatskin

mink  
 rabbit  
 shearlings  
 sheepskin  
 tails  
 tibet lamb  
 Specialty Leathers:  
 antique  
 embossed  
 metallics  
 patent  
 pearlized  
 perforated  
 printed

Exotics:  
 alligator  
 anaconda  
 eel plates  
 hand-painted snake  
 karung snake  
 lizard  
 ostrich  
 python  
 snake skin  
 stingray

Leather Trimmings:  
 fashion trim  
 fringe  
 leather butterflies  
 leather flowers  
 leather trims  
 pom-poms  
 stripping



**Alligator**



**Metallics**



**Flowers**



**Hair On**

# April Meeting's Show & Tell



1&2 - Paula's mouse pads  
3 - Ken Eriksen brought in this Madella  
4 - A rose carving from Paula's rose carving class  
5 - Phil's flask  
6 - Len's finished lastless shoes



## Ken's Sewing Seminar - Part 2

Ken demonstrated a continuation of last month's cylinder sewing, by installing a bottom to the cylinder.



1 - Clay's purse  
2 - Phil's holster

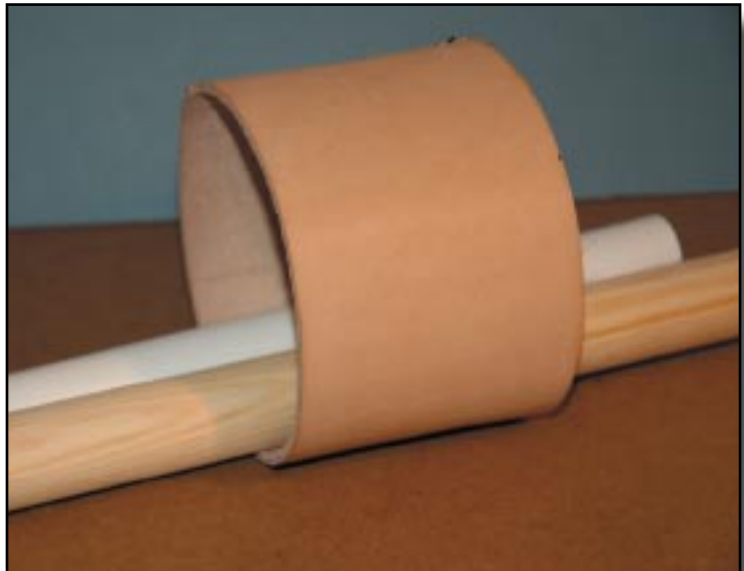


is a camera lens case, about 8 inches long and 3 inches in diameter for my telephoto lens. There is a trick or tip to pass along. I made the cylinder longer than required so I could use a very sharp Japanese knife to cut off a section for the “slide on top”. The trick is to re case the top section and use two dowels to pull and enlarge the top until it fits snug over the body of the cylinder. Just for grins, I cut another ring and stretched it to add to the bottom of the cylinder to give it a more balanced look. *(See page one for the finished project.)*

### Bob's Cylinder Sewing

It's too bad I can't attend the PSLAC meeting workshops, like Ken's sewing a cylinder workshop, sew (pun intended) I tried one myself. My project

**Bob Stelmack**  
Wellington, UK



## Upcoming Workshops.

The next all day workshop will be on the **27th May 2006**, with **Jana Stobaugh** doing an **embossed celtic pattern with plugs**. This workshop will be held at my home in Everett. The address is: 4908 Harbor Lane, Everett. WA. 98203. There are still a few spots available for this workshop and it should be a very good and informative one, so you still have a chance to come, call me on (425) 438 1709 or email me - lsmadison2@juno.com. Also, you can contact Paula on (206) 523 6295 or email - marquispg@aol.com.

The June all day workshop is on the 24th, and is on making **Holsters** with **Ken Imus** and will also be at my home. You can register for this class at the May meeting. Ken has a lot of experience making all types of holsters and this would be a worthwhile workshop for learning many techniques. You can bring your favourite (unloaded) gun to make a holster for, or, for those of you who do not have a gun and wish to learn, a toy gun will do the job just as well (and your son will love it!). The holster we'll be making will be lined, Weltd and hanging straight down (not angled).

The **Chan Geer workshop** will be held at the Senior Centre at Issaquah (the normal meeting place), due to the number of people signed up and to cater for a gentlemen coming down from Blaine who is in a wheelchair. All deposits (\$50.00) for this workshop will need to be in by the June Picnic Meeting at the very latest, and the balance (\$100.00) by the 1st of August 2006. Chan has sent Paula a tracing pattern and Photo Carve Pattern for the workshop. Due to the Senior Centre being used early on Sunday mornings, we have made our workshop as follows:

Saturday 8.00a.m. to 7.00p.m.

Sunday 10.30a.m. to 5.00p.m.

That gives us one long day and one short day. Also, on the Sunday after the workshop we'll be taking Chan and his wife, Mary, to Dinner at Black Angus (General is organizing that) and all from the class are welcome to come, just let General know and he and Ann will book the seating.

**Bob Beard** is doing a workshop in Spokane and loves to come to Seattle and would also like to do a workshop here. It will be a 2

day workshop of a **3D Shadowbox**. The cost will be \$150.00 plus materials for the 2 days. It will be held on **Friday the 11th and Saturday the 12th August 2006**. The workshop will be at my home, address at the top. Give me a call or email me if you would like to do the workshop.

*As a special for the Chan Geer Workshop, the PSLAC will be raffeleing off tickets for two lucky people to attend Chan's workshop. The tickets will be sold at 2 for \$5.00*

*during the April, May and June Meetings and will be drawn at the June Picnic.*

See you all at the meetings.

**Len Madison**

Workshop Co-Ordinator.





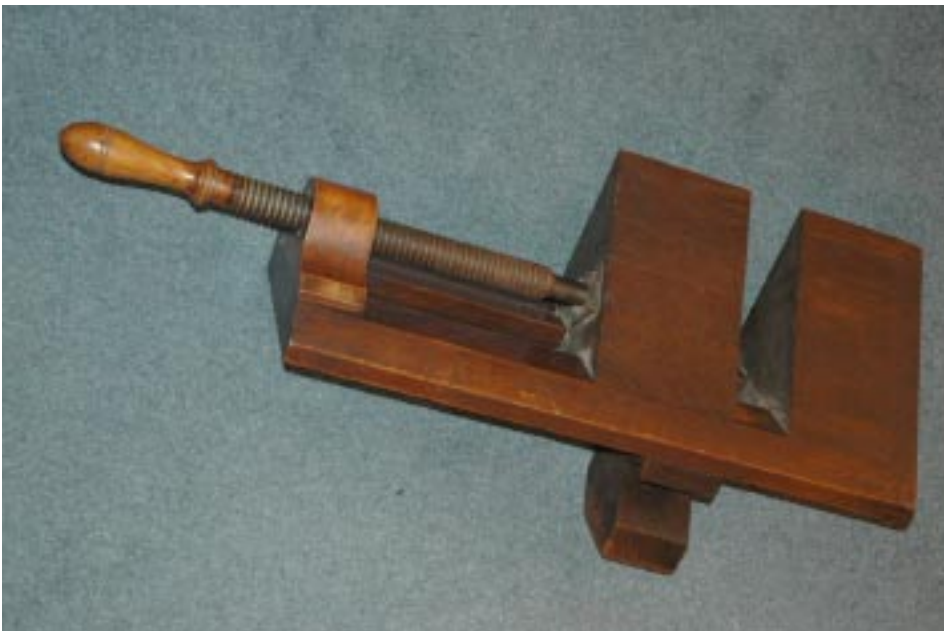
## Book Press Reconditioning

Took my smaller nipping press apart, removed rust and chipped finished and repainted. This is the one that Peter Main was interested in when he was here for a leather class, but he said his luggage was at the limit already, so since it was in pieces for shipment. I refinished it and it's back in use.

# ▲ BOB'S STUFF ▼

## What is it?

Located in an antique Shop. I now own it -- what is it?



## Upcoming Workshops

Getting a little a head of ourselves here, arrangements have been made to have **Chan Geer** come to Seattle to do a **Sheridan Style Carving Workshop** of 2 days. He has marked his calendar for **August 26th and 27th**. He has made up a new pattern for a notebook that he is teaching at present and we will be doing this as well as antiquing the project. The cost for the 2 days will be \$150.00 per person. We need a minimum of 10 people and not more than 20 to make the class a goer. As soon as we have a minimum of 10 people committed, we will contact Chan and make it a firm booking and he will send information of what leather and other materials and tools we will need for the workshop.

There are 8 people listed already for Chan's class and it will fill up quickly. So don't hesitate to let me know if you are coming. General can accommodate 12 people (maybe 13), more than that we will have to book the Senior Centre, and the sooner we know that the better to make sure the Senior Centre is available.

You can contact me at 425-438-1709, or General at 360-893-6759 or [generals@centurytel.net](mailto:generals@centurytel.net), or you can contact Paula at 206-523-6295 or [marquispg@aol.com](mailto:marquispg@aol.com) as she is in direct contact with Chan Geer.

This will be a workshop not to miss.

**Len Madison**  
Workshop Co-Ordinator.



# Upcoming Events

## The Schedule

for—

## May

---

---

**General Meeting >>> Sunday, May 7th starting at noon at the Senior Center**

See map on back for directions. Demo this month is **Dusty Wert - Block Dyeing**

---

---

**North breakfast >>> Last Friday of the month at 10:00 AM**  
at **Elmer's Restaurant** at Lynnwood.

---

---

**South breakfast >>> The 3rd Saturday of the month at 8:30 AM**  
at **Homestead Restaurant** on South Tacoma Way.

---

---

## June

---

---

**North breakfast >>> Last Friday of the month at 10:00 AM**  
at **Elmer's Restaurant** at Lynnwood.

---

---

**South breakfast >>> The 3rd Saturday of the month at 8:30 AM**  
at **Homestead Restaurant** on South Tacoma Way.

---

---

### **NOTES:**

● **General Member's Meetings** are on the 2nd Sunday of each Month.

● **Mini-Demos at Meeting**

May 2006 - Dusty Wert (Block Dyeing)

June 2006 - Annual Picnic, Bill Churchill Award, Garage Sale.

July and August - no meetings - UFO workshops only.

September - Carol Gessel - Using the Bargrounder and getting good results.

● **All-Day Workshops**

May 27th 2006 - Jana Stobaugh (Embossing with plugs) at Len's home..

June 24th 2006 - Ken Imus (Holsters) at Len's home.

July 29th 2006 - Judy Ferguson (Embossing - without plugs or leather dust) at Len's home.

August 26-27th - Chan Geer (Sheridan Style Carved Notebook) depending on the number, either at General's home or the Senior Centre (if we book early).

September 30th - Norm Lynds - Sharpening knives - at General's home.

October 28th - Ken Eriksen - Making a dreamcatcher - venue to be set.



## PSLAC South Saturday Breakfast

This is the May 15th South Breakfast at the Homestead Restaurant. Seventeen attended the morning feast. Two escaped before the picture was taken and Monte and Debbie Evans were at Madigan Hospital due to Monte's foot infection. We all signed a card and wished him well. Both of them are usually the first to arrive. We missed them being there.

### Dusty Wert

Monte has one toe less now (April 19th). He is home recovering nicely and care is on an out-patient basis. We plan to be at the next breakfast. Best wishes to all for May.

### Debbie Evans

---

## Paula's Rose Carving Class



Registration with George



Film pattern to leather



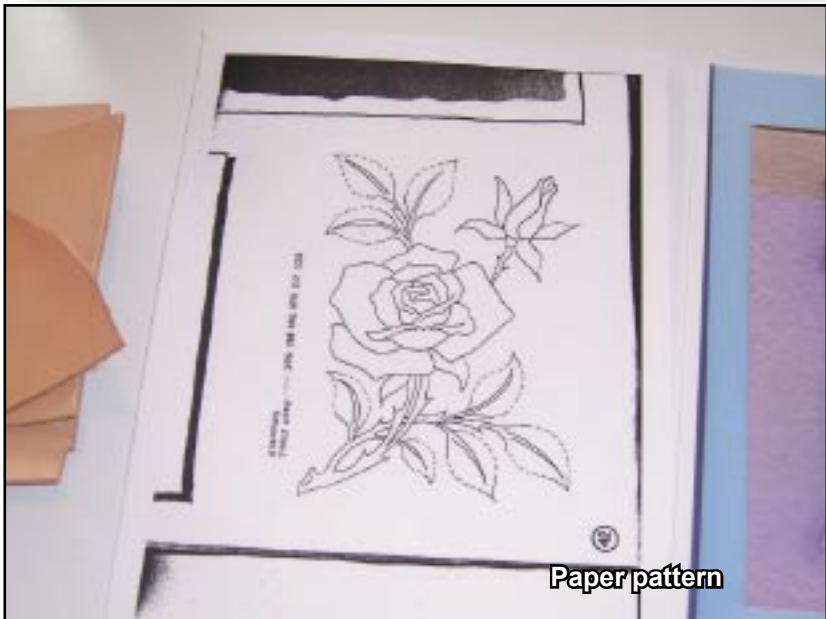
Trace paper pattern onto film



Two patterns finished



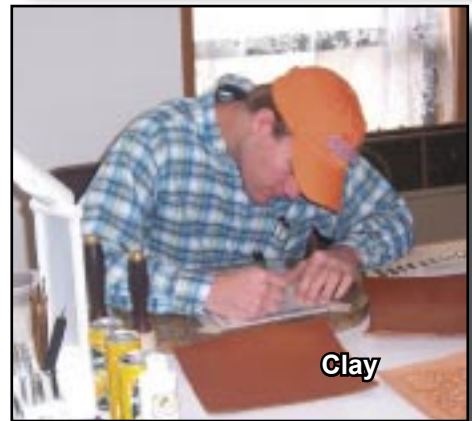
Step 1 Pattern



Paper pattern



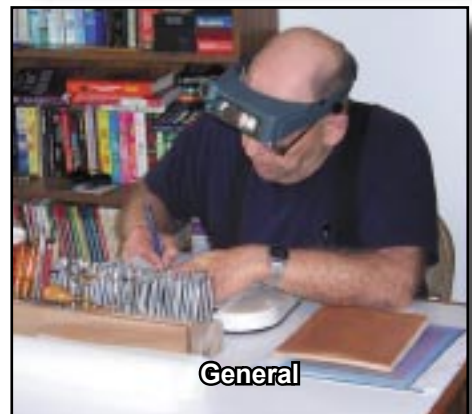
Norm, Sister Rachel



Clay



Second pattern



General



Paula Marquis



Paula's beveler demo



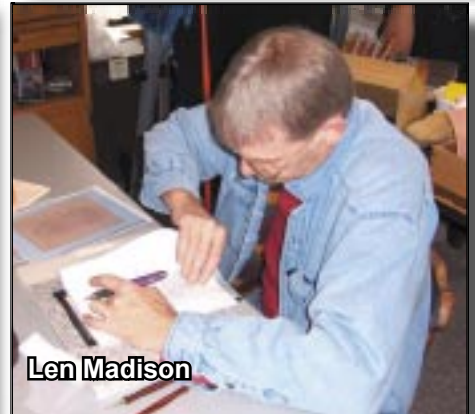
Paula's carving



Sister Rachel



Paula Marquis



Len Madison



Nom carving lines



Paula shows Roger careful pounding



Smooth rough spots as you go



Barbara

# PSLAC Members Only Advertisement Page

Any PSLAC Member can advertise leather related products or services, subject to approval. Just send your text, picture and/or logo to [stelmack@nwlink.com](mailto:stelmack@nwlink.com)

## MARQUIS UNIQUE LEATHER ARTISTRY, LLC

Paula and George Marquis

[www.marquisuniqueleather.com](http://www.marquisuniqueleather.com)

I make almost anything that can be made from leather and can be sewn by hand. I do not like sewing machines and cannot get along with them. Therefore, that excludes making clothing, which entails using very soft leather.

A lot of my works are 'bespoke items', meaning, one of, individual custom requests, ranging anywhere from books and folders to rifle scabbards, holsters and golf bags, fully carved and stamped, and any and all articles in between, which also includes saddles and harness.

I like to make articles that are practical, such as all kinds of bags (including brief cases, bible covers, etc.), belts with a challenge, mouse pads, tissue box holders, knife and sword sheaths, 11th Century bottles (sealed so they can be used as wine carafes), to various types of boxes (both useful and decorative) and other artistic decorations including such things as moulded bowls and vases as well as framed pictures.

Phone: (206)-523-6295

Email: [marquispg@aol.com](mailto:marquispg@aol.com)



## DIAMOND P LEATHER SHOP PHIL O'NEILL

Saddlery: New, Used-Repair

Custom Made Leather Goods

25051 - 180 Ave SE, Kent WA 98042

Hours By Appointment Or By Chance

(252) 631-9770

FAX (253) 631-4780

This Is A One-Man Outfit

All Custom & Repairs Are Crafted By Myself

Email: [bjoneill@worldnet.att.net](mailto:bjoneill@worldnet.att.net)

## Custom Maker Stamps Grey Ghost Graphics By Jeff Mosby

Custom maker stamps, laser cut acrylic templates and custom tapoffs for the leather craft field. Custom cut from your artwork at reasonable rates!

P.O. Box 30268, Myrtle Beach, SC 29588

(866) 205-9810 or (843) 903-4788

[www.greyghostgraphics.com](http://www.greyghostgraphics.com)

## DOC'S CUSTOM LEATHER & CARYER'S CORNER

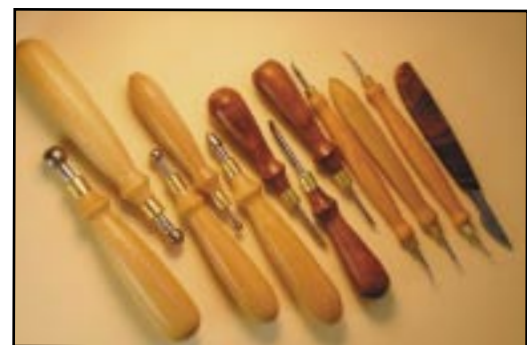
10 to 15% off every day!!!

Tools  
Lacing  
Supplies  
Books/Videos  
Patterns

Coming Soon!!!  
Online Sharing Community  
Free Patterns/Tips  
And More!!!

Doc Hayes  
1407 S. Socorro St. - Deming NM USA 88030  
505-544-4692

[dochayes@neturesw.net](mailto:dochayes@neturesw.net)  
<http://neturesw.net/docleather.htm>



## Norm Lynds Toolmaker

Mallets, Modelers, embossing tools,  
lifters and others on request

Phone: (360) 668-7004

E-mail: [NWLynds@Juno.com](mailto:NWLynds@Juno.com)

# Leather Company Advertisement Page



**Toll Free:**  
**(800) 541-3264**  
**Bee Natural  
Leather-  
care**  
*The ultimate in  
leather care prod-  
ucts*

P.O. Box 820803, Vancouver, WA. 98682-0018  
(360) 891-7178, FAX: (360) 891-7166  
Email: [bnatura@pacifier.com](mailto:bnatura@pacifier.com)

## SPOTLIGHT on PRO-CARV — Working and Tooling Leather Formulation

### DIRECTIONS:

Dilute concentrate with water: 1 part PRO-CARV to 10 parts water is recommended for carving and tooling. When immersing the leather for shaping or forming, add 8 oz. PRO-CARV to 3 gallons of water.

### NO CASING IS NECESSARY

Leather can be immersed or sponged with this solution. PRO-CARV eliminates the need to case leather. PRO-CARV allows you to begin working with the leather after immersing for 3-5 minutes because of the very rapid penetration into even the thickest hide. Allow the surface to dry somewhat before beginning forming or carving.

**Contact MacPherson's, Hide Crafters, Goliger's  
Leather, and The Leather Factory for any of the fine  
Bee Natural Leather products.**

*Advertisement*

### RawHide Gazette

**Editor / Publisher:** Bob Stelmack  
**Co-Founders:** Bill Churchill & General  
Seymour  
**Treasurer/Secretary:** Barbara Lourdes

The RawHide Gazette is published monthly (12 times a year). Address for information and correspondence: PSLAC, c/o Barbara Lourdes, PO Box 1144, Auburn, WA, 98071, USA, Email: [billing@pslac.org](mailto:billing@pslac.org)

The RawHide Gazette is provided to the Puget Sound Leather Artisans Co-Op as a part of their membership benefits. Annual dues are \$24.00 USD per year.

All submissions are subject to editing for clarity and length. All articles submitted must be accompanied by name, address and permission of writer.

### Advertising Rates

The RawHide Gazette now offers advertising space to interested parties. Ad spaces are as follows:

1/4 Page or Business Card ..... \$60 USD  
1/2 Page ..... \$110 USD  
1 Full Page ..... \$200 USD

These rates cover a six month time period. PSLAC members are entitled to a 25% discount. Leather companies supporting PSLAC are given free Business Card size advertisement, additional space at regular rates.

The Puget Sound Leather Artisans Co-Op can be found at:

<http://pslac.org>

**Support our sponsor and take advantage of the PSLAC Membership Discounts...**



**Toll Free Order Lines:**  
**1-(888) 263-5277**  
**Fax: 1-(888) 263-5086**

*Hide Crafter Leatherscraft*

*Offering wholesale discount to PSLAC members*  
**ON-LINE CATALOG** [www.hidecrafter.com](http://www.hidecrafter.com)

7936 Camp Bowie West  
Ft. Worth, TX 76116

George Hurst, Manager  
email: [hcrafter@flash.net](mailto:hcrafter@flash.net)

## Steve Derricott



**Twister D Products**  
**301 E. Bower St.**  
**Meridian, Idaho 83742**  
**(208) 884-3766 - Fax (208) 884-3767**  
**A Division of Gfeller Casemakers, Inc.**

[www.lacemaster.com](http://www.lacemaster.com)

*Offering a 10% discount to the PSLAC members*

**Outside Washington**  
**1-800-343-9949**

**(206) 328-0855**  
**Fax: 328-0859**

## MACPHERSON

*Leather Company*

Leather, Shoe Finding and Saddlery

*Offering a 30-40% off retail discount to the PSLAC members*

**Greg MacPherson**

**519 - 12th Avenue S.**  
**Seattle, Washington 98144**

## GLOBAL LEATHERS



**Web site: [www.globalleathers.com](http://www.globalleathers.com)**  
**Telephone : 212-244-5190**  
**Fax : 212-594-7515**  
**e-mail: [globalleathers@usa.net](mailto:globalleathers@usa.net)**  
**Paul Crystal**

*Offering a discount to PSLAC members*

**...more sponsors on the following page...**



## Dusty Johnson

PLEASANT VALLEY SADDLE SHOP  
1220 S. County Rd. 21  
Loveland, CO 80537  
Phone: (970) 669-1588  
Fax: (970) 669-1589  
E-Mail: dusty@pvsaddleshop.com  
URL: <http://www.pvsaddleshop.com>

*Offering a 20% discount to the PSLAC members*

## BRETTUNS VILLAGE LEATHER

Selling odd lots, miscellaneous overstocks,  
bargain leathers and leathercraft  
accessories, all from Maine, only online

Sides, Full Hides, Buckles, Key Rings, Laces, Thread,  
Tools, Rivets, Scrap Pieces, Elk & Buffalo Scrap

**Always Free Shipping in the 48 States**

[www.brettunsvillage.com](http://www.brettunsvillage.com)

## Leather Factory

Durham Hefta  
Manager



Portland

Phone (503) 255-8818  
Fax (503) 255-9011  
Toll Free (888) 277-3360  
[www.leatherfactory.com](http://www.leatherfactory.com)

13221 N.E. Whitaker Way  
Portland, OR 97230-1128

*Offering a wholesale discount to the PSLAC members*



SKYSHOOTER  
(Dave)  
(425)823-0110

TRADER'S  
Stitching Posts at  
Wholesale

SCREAM'N EAGLE  
(Mike)  
(360)658-1847

## Tandy Leather Boise

JoAnne Tackitt, Manager  
285 N. Orchard St.  
Boise, ID 83706



Toll Free:  
**1-800-930-2850**  
(ph. 208-375-5589. Fax. 208-375-7168)

<http://www.tandy-leather.com>

*Offering a wholesale discount to the PSLAC members*

## The Leather Factory

Kermit P. Creek  
Manager



Billings

Phone (406) 256-1355  
Fax (406) 256-1360  
Toll Free (888) 277-3323  
[www.leatherfactory.com](http://www.leatherfactory.com)

115 North 30th Street  
Billings, MT 59101-2032

*Offering a wholesale discount to the PSLAC members*



## TWLeather, Inc.

Toll Free: **1-800-477-9923**  
2017A White Settlement Rd.  
Fort Worth, TX 76107  
(817) 877-5427, Fax (817) 877-5432

*Offering a wholesale discount to the PSLAC members*

## Tandy Leather

Jim Linnell  
Director of Operations



Toll Free:  
**1-888-890-1611**

<http://www.tandy-leather.com>

*Offering a wholesale discount to the PSLAC members*



## Leather Factory Spokane

28 West Boone Ave, Spokane, WA 99201  
Phone: (509) 328-9939  
Toll Free: 1-800-822-8437  
Fax: (509) 326-7019

*Offering a wholesale discount to the PSLAC members*

[www.leatherfactory.com](http://www.leatherfactory.com)



Email: [jwleathercrafter@qwest.net](mailto:jwleathercrafter@qwest.net)

(503) 293-2833

Fax: 977-1762

J & W

Leather Crafters

Leather Repair: Saddles, Tack, Harness, Chaps, anything  
Leather except clothing. We make new Items & Custom Orders

<http://www.users.qwest.net/~jnoecker/leather/>

*Offering a 10% off retail discount to the PSLAC members*

"It never hurts to ask!"

Joseph & Wendy Noecker

3912 SW Dolph CT  
Portland, Oregon 97219

**Taking I-90**

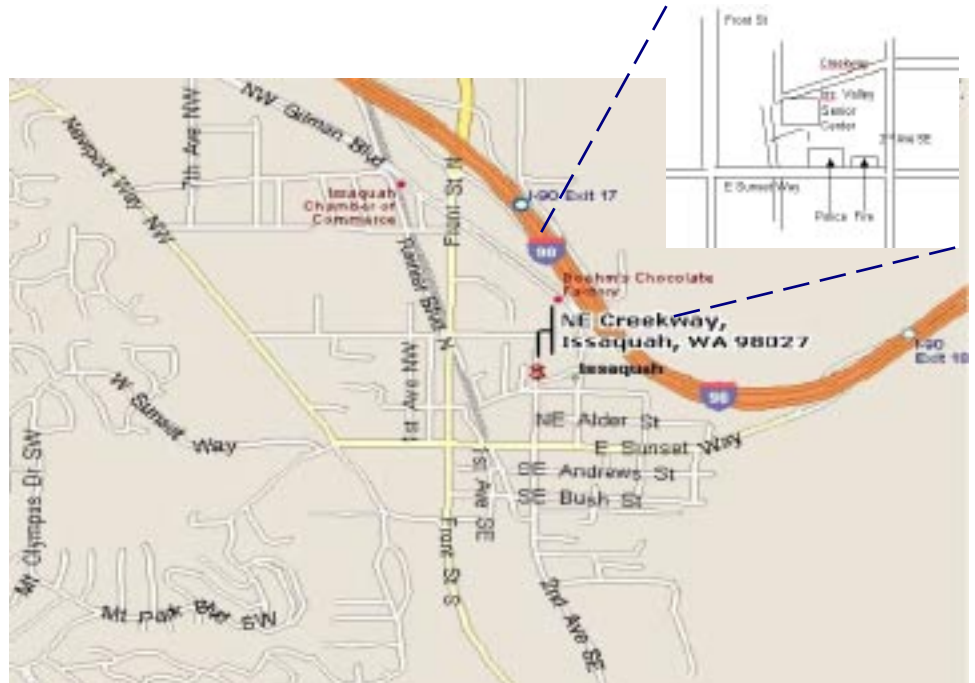
**From Auburn:** come north on Hwy167, or I-5, then I-405 north, then onto I-90, going east:

**From Everett:** South on I-5 to 405 South, or to I-90, going east:

From I-90 get off on exit 17/Front St., and bear right onto Front Street. At the third stoplight, turn left onto E Sunset Way, then see below:

**Taking Hwy 18 from around Auburn to Issaquah**

Get on Hwy 18 going East, from Auburn, it's about 12 miles to Maple Valley, then at about 2 ½ miles after Maple Valley, look for the turn off to Issaquah Hobart Rd SE, turn onto ramp 276th Ave SE and go 0.6 miles, bear left onto Issaquah Hobart Rd SE. It's about 8 ½ miles from there to Issaquah. Hobart becomes Front Street S, which takes you into downtown Issaquah. Turn right onto E Sunset Way, then see below:



**After turning onto E Sunset Way:**

go two blocks (past the Police and Fire Stations), turn left onto 2<sup>nd</sup> Ave SE, go past the old Senior Center building on your left, and a baseball field, then left onto NE Creekway, go almost to the railroad tracks. The new Issaquah Valley Senior Center is a brick building on your left, parking in front of it. There is also parking behind, from Sunset, turn left into the parking area, right before the Police Station (look for a large parking sign on your left), and follow it till you see a kids play ground. Address: 75 NE Creekway, Issaquah, WA 98027

---

---

**PSLAC  
c/o Barbara Lourdes  
PO Box 1144  
Auburn, WA 98071  
USA**

