

# Raw Hide Gazette

Copyright © 2006 by PSLAC, All Rights Reserved

"Without question, the Raw Hide Gazette is by far the best and most informative and comprehensive Guild publications of all of them! You are to be commended for your very fine and professional efforts. Keep up the good work. With admiration"  
/signed/  
Al & Ann Stohman, December 1997

## Hide Highlights

Page

- 1 The Annual Bill Churchill Award
- 2 Fixing Digital Photos
- 2 Jim Linnell's Website
- 3 PSLAC South Breakfast
- 3 Edmonds Art Fair -- Re purposed Leather Belts
- 4 Annual PSLAC June Picnic/ BBQ/Garage Sale/Bill Churchill Award Meeting
- 5 June Picnic Meeting 2006
- 5 News from Sea Leather Wear
- 6 June Show & Tell
- 7 PSLAC Bar-B-Que Dessert Winner
- 7 Don't forget
- 7 your Puyalup
- 7 Fair entries...
- 8 A Visit with Tom Katzke in Redmond, Oregon
- 9 PSLAC at Green River District Boy Scout Camporee June 3rd 2006
- 10 Jana's Embossing Celtic Dog Workshop
- 11 Western Ranch Custom Leather
- 14 Upcoming Events
- 14 PSLAC Current Schedule
- 14 Workshops



## The Annual Bill Churchill Award

We had our Annual PSLAC June Picnic/BBQ/Garage Sale/Bill Churchill Award, phew, what a mouthfull!

It was a great success and very well attended by the old members, some new member and some very welcome and seldom seen far-away members and lots of spouses too, to help make the day a success.

A Special Bill Churchill Award was presented to General Seymour, the Co-Founder and main Backbone of the Club. Since General had eliminated



**Meeting Announcement**

**NEXT MEETING on**

**No meetings -**

**Summer Break**

*(September 10th after Summer Break)*

himself from the regular award due to the fact that he was the Co-Founder, it seems that the directors thought that he deserved some special recognition for all the work and effort, above and beyond the call of duty, that he has put into the Club and always having his home available for workshops anytime we need. Always giving his time at the Puyallup Fair to do demonstrations and going to all the Scout events to promote leatherwork among the young and all other events where a helping hand is needed you will find General busy working hard. CONGRATULATIONS General, extremely well deserved.

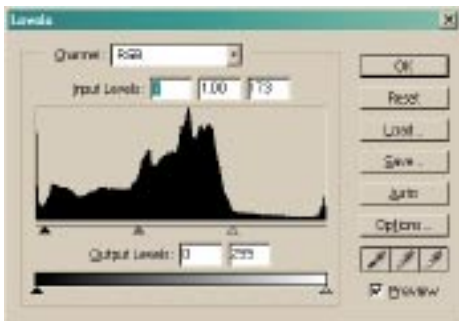
Another big surprise was the yearly Bill Churchill Award this year. Its not often that I am left standing with my mouth open and nothing coming out! I was this year as I (*Paula Marquis*) was the lucky recipient of the Bill Churchill Award. In all honesty, I think there are many others in the Club who have put in a lot more work and effort than I have and deserve it too, but, having said that I am VERY VERY pleased to receive the award, and will proudly display it in my workshop. THANK YOU.

**Paula Marquis**

## Fixing Digital Photos

Some time ago I was given some helpful information to help adjust digital photos for the RawHide Gazette. We get pictures from many sources and the quality varies quite a bit. So here are some general guidelines for Adobe Photoshop to enhance a challenged photo:

- (1) Open the file
- (2) Select CROP (<cntrl> C ...or... TOOLS window CROP icon) and hold mouse down while drawing selection box on image. To implement crop, just double



**Figure 1**

click in the cropped selection.

- (3) Select LEVELS (<cntrl> L ...or... pull down NAME - ADJUSTMENTS - LEVELS). Check PREVIEW box. Drag level for the white input from the right to the area of rise in white, likewise drag the black to the right (fig. 1) and click OK.
- (4) Select COLOR BALANCE (<cntrl> B ...or... pull down NAME - ADJUSTMENTS - COLOR BALANCE). Check PREVIEW box. Drag sliders to correct color balance. (*Note: Pictures taken outdoors, with auto-white*



**Figure 2**

*balance will probably be OK, but those taken in artificial light or flash will need some color balance, Be careful since most computer monitors will require set up to have true colors. A quick way to adjust the monitor is to take a picture of your spouse outside holding a red, blue and white item. Then view the picture on the computer's monitor and adjust the monitor's colors.)* Click OK.

- (5) Select UNSHARPEN MASK (pull down FILTER - SHARPEN - UNSHARPEN MASK). Check PREVIEW box. Set the AMOUNT to 60, the RADIUS to 3 and the THRESHOLD to 8. Readjust, as desired, for the best picture (fig. 2) and click OK.

*(Note: You can only help an out-of-focus picture only so much.)*

- (6) Save the file as a different name to preserve the original.

**Bob Stelmack**  
Wellington, UK

## Jim Linnell's Website

While surfing the Internet recently, I ran across a link to **Jim Linnell's** website at:

<http://home.earthlink.net/~elktracks/>

His gallery of projects and art work are just breath taking, but what I found the most interesting was in a section called "About". Here is where Jim tells his biography and it shows the true love of leathercraft.

Jim said:

*"I saw that Tandy Leather Company was looking for somebody to get into their manager-training program. I wasn't sure I wanted to be a manager, but the Idea of working in the leather business sounded like something I might want to do, so I went in and checked it out.*

*"The first thing I found out was that I'd be making less money and working more hours, but there might be some opportunity to grow if I stuck with it. My family thought I was nuts to consider such a job, but my sweet wife told me that we would manage if that's what I wanted to do. So one Friday afternoon I quit an \$11.00 an hour job (a lot of money in 1978) and went to work the following Monday for \$2.65 an hour. I must have been young and stupid at the time.*

*"I absolutely loved the work I was doing. I started doing leatherwork demonstrations every week at schools and for youth groups all over Montana, as well as teaching classes in the store in the evenings. I remember visiting a school in Sydney MT, where I introduced leathercraft to 8 classes of about 25 junior high, industrial arts students (200 jr. high kids?) in one day. Long day!!"*

This brought me back to my first leather project and the help, the advice and the relatively inexpensive Lucky Seven tools from Tandy that started me off. *How many others have begun their leather hobby with the Tandy Leather Company? A majority, I would suspect.*

**Bob Stelmack**, Wellington, UK

# PSLAC South Breakfast



I took this after some of the members escaped. There were 12 of us.



PK showing DJ the problem with her purse strap.



DJ looking at PK's leather purse strap.

## Edmonds Art Fair -- Re-purposed Leather Belts

Rick Milburn had an interesting use for belts that he collected from thrift shops, friends, discount stores and any place that had leather belts for the taking. Rick used those belts, complete with buckles and weaved them over and under to form the seats of chairs or the tops of tables. The buckles were position on the underside.

The effect of the new and used leather belts was striking and pleasant to the eye. Rick can be contacted at the contact information from his business card at the right.

**Bob Stelmack**  
Wellington, UK

**Rick Milburn**  
[thelaughingboy.com](http://thelaughingboy.com)

One-of-a-kind furniture  
 Repurposed found objects

1710 34th Street Missoula,  
 MT 59801 406-543-0677  
[laughingboyinfo@aol.com](mailto:laughingboyinfo@aol.com)



# Annual PSLAC June Picnic/BBQ/Garage Sale/Bill Churchill Award Meeting



▲ Leather Garage Sale ▲



▲ Bar-B-Que ▲

▲ Awards ▲



▲ Meeting ▲

## June Picnic Meeting 2006

The Picnic Meeting in June this year was extremely well attended with lots of new faces, all the old regular faces, some faraway faces we haven't seen and of course our faithful overseas member - **Bob Stelmack** and he brought his 'better half' **Karen**, all the way from England.

**Jeff Bement** did his usual wonderful job of bringing the BBQ and doing most of the cooking with some help. Lots of good food, excellent company - what more could one ask.

There was a table with lots of 'show and tell', with Bob Stelmack taking photos for the Rawhide Gazette (for any new members who don't know, Bob Stelmack is our editor for the Rawhide Gazette and he does all the work from England and does a wonderful job too.).

The **Bill Churchill Award** was presented. It is always a surprise who is awarded this honour. A very well deserved **General Seymour** received a **Special Bill Churchill Award**. He is without a doubt the backbone of the **PSLAC** and it was considered high time that he was honoured and acknowledged for all the hard work and unstinted effort he puts into the Club. **CONGRATULATIONS** and **WELL DONE** General.

The biggest surprise of all was that I [**Paula Marquis**] was honoured with the Annual Bill Churchill Award. It left me somewhat speechless.

**Dusty** performed the presentations of the Bill Churchill Awards again this year and I think she does such a good job of it that she should do it permanently. It is obvious that she takes a great delight in doing the presentations, in fact, I think she almost enjoys doing the presentations more than she did in receiving it herself.

The Bill Churchill Recipients are:

**Woody Collins 2002**  
**Bob Stelmack 2003**  
**Dusty 'Helen' Wert 2004**  
**Ken Imus 2005**  
**Paula Marquis 2006**

The raffle this year was a very big one and we had lots and lots of really great prizes. **Andy** from **Hidecrafter in Denver** sent us many

good prizes and I think we should all do our ordering through Andy, make his figures look good as well as the fact that he is such a willing and helpful person. I've come to the conclusion that if George Hurst ships Andy off to Australia, I will be doing my Hidecrafter orders through Andy in Australia! When I went to see **Brett** at **Tandy on Aurora Ave, in Seattle** to ask him for some donations to the raffle, he said to me 'Go through the shop and pick what you want.' Now, that's pretty generous. He too is always a delight to deal with. And, last, but, most certainly not least, we received some great raffle items from **David Morgan** in **Bothell**. **Ken Eriksen** says David Morgan's shop in Bothell is really a great place to shop and get lost in. Apparently he's done that on a number of occasions.

All I can say is, good food, great company, good conversation and a good time. Hope to see you all again next June (during the rest of the year too, of course!).

**Paula Marquis**



## News from Sea Leather Wear

Our website now offers sample fish leather packet kits for purchase on-line. The varieties are:

- \* Suede Fish Leather Packet, consisting of 1 whole suede fish skin, plus 15 swatches of different drum dyed colors
- \* Glazed Fish Leather Packet, consisting of 1 whole glazed fish skin, plus 15 swatches of different drum dyed colors
- \* Combo Fish Leather Packet, consisting of 1 whole glazed fish skin, 1 whole suede fish skin, plus 30 swatches of different drum



**Jeff Bement introduces his new wife Joyce to the group.**

dyed colors of both kinds

Pricing for the single kits, including shipping, is \$13 Canadian each. Pricing for the combo kit, including shipping, is \$20 Canadian each.

Purchase of a single kit can be used as a \$10 credit toward a purchase of skins for \$50 minimum. Purchase of the combo kit can be used as a \$20 credit toward a purchase of skins for \$100 minimum.

Ordering our products using the sample swatches helps to insure the right color selection. Actual fish leather colors are affected by the dye lots, and can vary in appearance on the internet depending on computer monitor settings.

Fish Leather is an environmentally friendly alternative to other leathers, manufactured from skins that are normally discarded by canneries. Our company markets fish leather skins, in a variety of dyed colors, in a ruffled suede or glazed finish, for custom manufacturing.

For further information, visit us at [www.sealeatherwear.com](http://www.sealeatherwear.com)

# June Show & Tell



▲ General's Purse and  
◀ Paula's Purse ▼





▲ Ken Imus and ▲ Len Madison's Work

## PSLAC Bar-B-Que Dessert Winner

Here is the recipe for the grilled fruit or as Dusty called it the "Drunken Fruit".

It is a very simple recipe. You will need 1 pineapple, two or three peaches, two or three nectarines, four long bananas, a pint basket of strawberries, two cups sugar and two large bottles of dark Jamaican rum.

Start off by opening one bottle of dark rum, taking big swig to settle nerves. Look for sharp knife in drawer, settle for dull one—take big swig of dark rum.

Peel bananas and forget that you dropped a peel on floor. Take 1 step back and slip on forgotten banana peel, tailbone is sore—take big swig of rum.

Cut peaches and nectarines in half and remove seeds. If you did not cut yourself celebrate—take big swig of dark rum, if you did cut a finger console yourself with two big swigs of dark rum as you apply bandage.

Cut bananas at a angle and place in bottom of large bowl. Place peach and nectarine half's on top. Sprinkle one fourth cup sugar on fruit and add one fourth cup dark rum. Cover with tight lid or plastic wrap. That was a lot to do take big swig dark rum.

Cut top and bottom off of pineapple. Cut into fourths and cut out heart. It is too fibrous, get your fiber somewhere else like Metamucel. Take big swig dark rum.

Open new bottle of dark rum. Take swig.

Cut top and bottom off pineapple...oh wait, we already did that, cut pineapple into half inch slices. Don't let anyone see the ruler you measured with they won't believe it. Drink more rum.

Put pineapple slices in different bowl and sprinkle with one fourth cup sugar. Pour one fourth cup dark rum on top cover and put in fridge. Rum, sure, don't mind if I do.

Clean strawberries and cut tops off. Curse yourself for not doing this first. Glass of rum looks empty.

Slice strawberries in half, put in bowl and sprinkle with sugar. Get better bowl from cabinet and take strawberries out of the colander and wipe up little round spots of sugar off counter. Take sip of rum.

Pour one fourth cup rum on the berries and cover. You now have three bowls of fruit that don't fit into refrigerator.

Call wife on cell phone and ask her to pickup some vanilla ice cream and those little stick thingys that you stick into the fruit, you know what I am talking about right? Honey? Hang up phone when your boss starts yelling at you. Take big swig of dark rum and dial the right number.

Let the fruit soak in the sugar and rum for as long as it takes you to remember.. or at least two hours.

After the two hours the rum should be well soaked in and the fruit should be ready too.

Skewer the fruit in a set pattern pineapple, strawberry, peach, thumb, banana, nectarine, palm. Place on platter. After you finish skewering your fruit and hand, sprinkle last of sugar on fruit. Take swig of dark rum.

Get your grill going on high flame, tell neighbor that every thing is OK and thanks for the extinguisher.

Place skewers on grill and cook for about two to three minutes on each side.

Serve with scoop of vanilla ice cream, enjoy wiping mess off of your suit pants.

Enjoy the recipe

Clay Miller

**Don't forget  
your Puyalup  
Fair entries...**



## A Visit with Tom Katzke in Redmond, Oregon

Tom was kind enough to invite me to his home while we were on our recent vacation. Tom is a member of **PSLAC** and is one of those Internet members who is unable to make it to the monthly meeting.

We had a nice long visit and he showed me some of the projects that he and his wife had around. Tom is like most of us—most projects are either out the door as gifts or sold.

Two projects, pictured here were his three dimensional **Rainbow Trout** (a la expanding on the Rob Barr methods) and his **Portable Tool Kit**. Ever since I saw Peter Main's "Toy Box" that Peter keeps his tools in, I've been trying to figure out what shape my leather tool box would take.

Tom certainly is very knowledgeable about leather and the people in the craft. I hope to learn more from him when I return to the State of Washington where he will be closer to visit to.





## PSLAC at Green River District Boy Scout Camporee June 3<sup>rd</sup> 2006

Saturday afternoon Seattle area PSLAC members set up shelters in Lot "C" at Pacific Raceway in Auburn, WA. The event was the **Green River District Boy Scout Camporee**, June 2<sup>nd</sup> – 4<sup>th</sup>. 429 **Boy Scouts** camped for a weekend of scouting fun. There were also **Girl Scout** units, visiting **Cub Packs**, **Order of the Arrow** and **Venture Crews** attending.

Leatherwork was our area in the Scout Skill Games, Exhibits and Demonstrations Saturday afternoon. The weekend weather was typical Seattle ~ showers and sun-breaks. Fortunately it was 'sun-break' for the afternoon endeavors.

PSLAC members, **Barbara Lourdes, Dave Jensen, Debbie Evans and Roger Kaiser** organized the leather activities. Work stations with pounding blocks, mallets and hefty handles were set up under two shelters. There were seven boxes of leather stamps from which participants could choose designs. Roger displayed a number of his projects from PSLAC classes showing a wide variety of things that can be done with leather; bowl pounding, lastless shoes, picture carving & coloring, tool holders, etc. Youth and adults were invited to add designs to 3" round leather pieces. A hole could be added for a line and bead decorations. Antler slices and fur scraps were given to those interested.

Camp sites were set up on Friday and attendees enjoyed free passes to two racing events that evening in addition to the scouting events for the weekend.

It was an enjoyable afternoon at a very well run Scouting Camporee.



Countless thanks to all the Staffers for their many hours of work that made this event a success.

**Debbie Evans**



## Jana's Embossing Celtic Dog Workshop

On Saturday May 27 several of us met at Len's house for a full day workshop given by **Jana Stobaugh**. This project was using plugs to emboss a pattern of a Celtic dog.

We were supplied with a pattern, 2 pages of instructions, and a cardboard on which a pattern was glued. The pictures will show that the lines of the pattern were of different widths. Using tracing film, we were to draw on the inside edges of all the pieces, trace them onto the leather of indicated thicknesses, cut them out and fit them to the board. Prior to gluing the pieces to the cardboard, the beveling was started.

Adjustments had to be made during the fitting process so that there was a slight separation at the joints. As with all Celtic patterns, there is constant under/over weaving of the parts. The beveling was completed to accomplish this. Then a modeler was used to smooth everything down, as the 2 oz leather top piece will show all imperfections.

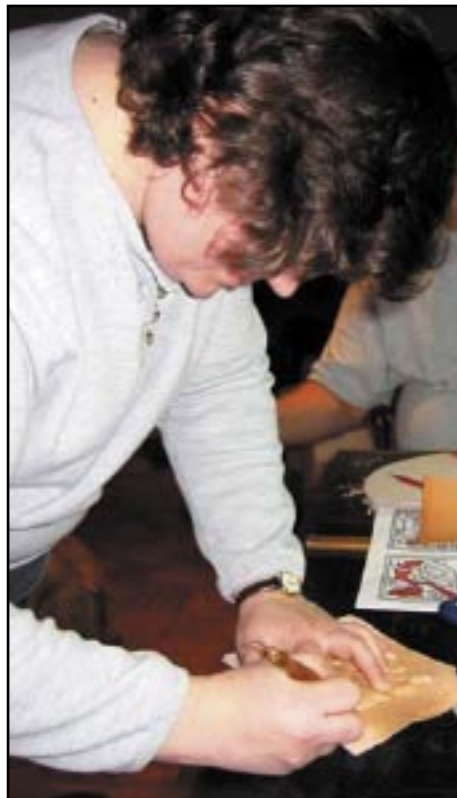
The top piece was dampened on both sides and mangled between our hands to loosen up the fibers and soften the leather. It was then put on top of the cardboard and the embossing process began by using the fingers to form the leather around all the plugs and into all the grooves. During this time you had to be constantly aware of finger nails and keep them off the leather. The leather was removed from the form and let dry out a bit, and then replaced. The next step was using a modeler to further emboss the leather.

The leather was again removed from the form and contact cement applied to both surfaces. After setting up, the top piece was again placed over the form (carefully). Using the fingers and modeler the leather was smoothed over the plugs to set the glue.

The final step of the class was to bevel all around each of the pieces to distinctly outline each of the pieces and the weaving of the various parts. The coloring and finishing to be done by the participants.

It was a very enjoyable day. Thank you Jana and Len.

**Norm and Paula**



## Western Ranch Custom Leather

Our summer vacation took **Karen** and I to a town I haven't visited before. While strolling in the "Old Town" section of Redmond, Oregon, I happened upon a "real" leather shop with "hand made" items produced on the premises.

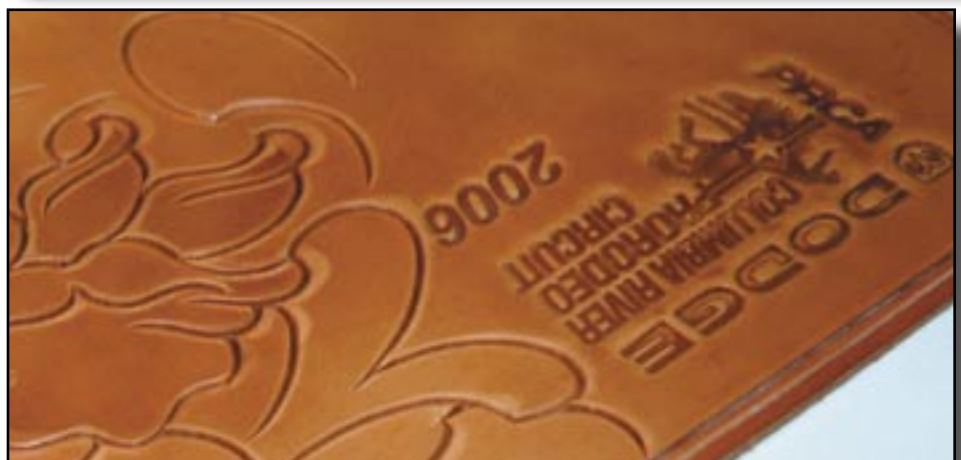
The owner/artist, **Ryder Gautreaux** was working and took some precious working time to show some of his designs and techniques he uses to produce the wide variety of leather goods for sale.

Ryder asked me not to take a full face picture since he was just recovering from some injuries and he thought the stitches might put off the readers. I didn't think so, but complied with his wishes.

The first thing I noticed was Ryder's swivel knife carving techniques. He uses "tap offs" to place the basic elements of a pattern on the leather. These "tap offs" are just cut out pieces of hardened leather (a flower, a leaf, etc.) that may or may not have some tooling or cutting on them. Ryder uses a **Tippmann** clicker or just a plain old cobbler's hammer to "tap off" the design to the leather project.

Then using a ceramic angle blade in the swivel knife barrel wrapped with adhesive tape he cut very deeply into the leather. Looking at the cuts, they are one-half to three-quarters of the thickness of the leather. Ryder uses an unconventional grip of the swivel knife and uses quite a bit of pressure, as you can see from the pictures. Most of his cuts are pulled, but some cuts are made pushing the knife to keep from constantly turning the leather.

The projects Ryder was working on at the time were some day planners for **Rodeo Barrel Racing** for the **Dodge** sponsors. The text and the small logo on the day planner were created on the computer and



taken to an engraving shop to have plates made to be embossed with his Tippmann clicker.

There were some items in the store that were quite interesting. One was a bed frame completely covered in tooled leather and the other was a briefcase to die for. The briefcase was one of the most ornate, well constructed I've ever seen in a dark brown color. It was definitely executive quality with a price to match.

The purses, chaps, belts, spur straps and wallets all had that same quality look to them.

In a separate room were the stitchers, sewing machines, shoe machinery and creasers—clean and tidy.

Ryder's shop has two other employees that assist with the finish work and even do some of the projects from start to finish. Ryder does all the design and pattern work. Although this leather shop has a store front on a major arterial and in the center of the "old town", Ryder says that a lot of his business comes from his Internet site.

With the depth of his cuts and the strong stamping he does, most of his work takes on the "Sheridan" style.

If you get a chance, stop by Ryder's shop and say hello. He was quite friendly and willing to share as long as he could keep on working.

Contact information:  
Exclusive Handmade Leather  
Designs By Ryder Gauteraux  
536 SW 6th  
Redmond, Oregon 97756  
541-923-1700  
1-888-BUL-FROG  
www.westerranchleather.com  
email: rydergauteraux@yahoo.com

**Bob Stelmack**  
Wellington, UK



▲ Day Planner



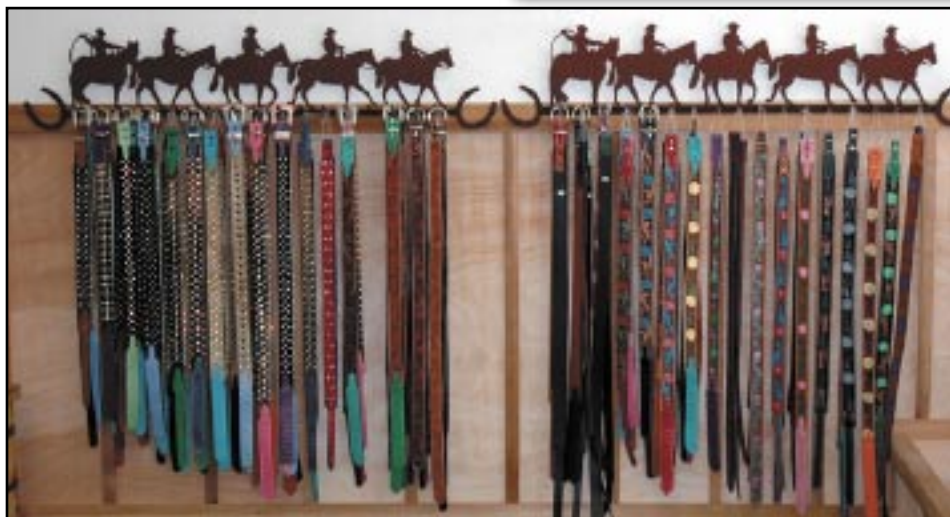
▲ Filigree



▲ Spir Straps and Closeup of boot▶



▼ Handmade Belts





▲ Ryder's Work Benches

## Exclusive Handmade Leather Designs By Ryder Gauteraux

▼ Tooled executive briefcase



▲ Tooled leather bed frame



[www.westerranchleather.com](http://www.westerranchleather.com)

# Upcoming Events

## PSLAC Current Schedule

General Member's meetings are on the 2nd Sunday of each Month.

Mini-Demos at meeting.

August - no meeting - UFO workshops only.

September - Carol Gessel - Using the Bargrounder and getting good results.

October - Meeting will be held at Quil Ceda at Marysville (Final details at September Meeting).

All-Day Workshops.

August 8/9 - Bob Beard - 2 day workshop - Pattern will include floral, scenery and embossing - at Len's home.

August 26/27 - Chan Geer - 2 day workshop making notebook with Sheridan Pattern - at the Senior Centre at Issaquah (the normal meeting place).

September 30th - Norm Lynds - Sharpening knives - at General's home.

October 28th - Ken Eriksen - Making a dreamcatcher - venue to be set.

December 2nd -  
-----

North breakfast >>> Last Friday of the month at 10:00 AM  
at Elmer's Restaurant at Lynnwood.

South breakfast >>> The 3rd Saturday of the month at 8:30 AM  
at Homestead Restaurant on South Tacoma Way.

## Workshops

By the time you read this, **Bob Beard's** workshop will be gone, but, he will conduct a **workshop in Seattle** mid-week on the 8th and 9th August.

The major **August workshop** will be **Chan Geer**, doing a **folder with Sheridan Style carving and stamping**. This will be on **Saturday the 26th and Sunday the 27th August**. There are 18 people signed up with two spots still open as 20 is the limit that Chan will take. Anybody who still wishes to go can pay and book by contacting **Paula Marquis** at [marquispg@aol.com](mailto:marquispg@aol.com) or phone her on (206) 523 6295.

**September workshop** on the **30th** from 9a.m. to 5p.m. will be on **Sharpening Knives** and conducted by **Norm Lynds** at General's home in Orting. It will be an excellent workshop to give you the opportunity to learn how to get a keen edge on all your leatherworking knives.

The **October workshop** on the **28th** will be making a **Dreamcatcher**. This one will be conducted by **Ken Eriksen**. The venue for the workshop will be in the September RG.

The next all day workshop was set for December 2nd with **Clay Miller** teaching how to draw Sheridan style patterns. Unfortunately, we have had to cancel this workshop and will look to replacing it with another subject. For personal family reasons Clay has had to move his family to Colorado and he will be moving in the first week in August. He said he will remain a member of PSLAC and will miss all the friends he's made. The Club will also miss Clay, as he was not only a good leather worker, but, a very nice person too. We hope to see you back in Seattle from time to time Clay.

**Len Madison**

Workshop Co-Ordinator.

# PSLAC Members Only Advertisement Page

Any PSLAC Member can advertise leather related products or services, subject to approval. Just send your text, picture and/or logo to [stelmack@nwlink.com](mailto:stelmack@nwlink.com)

## MARQUIS UNIQUE LEATHER ARTISTRY, LLC

Paula and George Marquis

[www.marquisuniqueleather.com](http://www.marquisuniqueleather.com)

I make almost anything that can be made from leather and can be sewn by hand. I do not like sewing machines and cannot get along with them. Therefore, that excludes making clothing, which entails using very soft leather.

A lot of my works are 'bespoke items', meaning, one of, individual custom requests, ranging anywhere from books and folders to rifle scabbards, holsters and golf bags, fully carved and stamped, and any and all articles in between, which also includes saddles and harness.

I like to make articles that are practical, such as all kinds of bags (including brief cases, bible covers, etc.), belts with a challenge, mouse pads, tissue box holders, knife and sword sheaths, 11th Century bottles (sealed so they can be used as wine carafes), to various types of boxes (both useful and decorative) and other artistic decorations including such things as moulded bowls and vases as well as framed pictures.

Phone: (206)-523-6295

Email: [marquispg@aol.com](mailto:marquispg@aol.com)



## DIAMOND P LEATHER SHOP PHIL O'NEILL

Saddlery: New, Used-Repair

Custom Made Leather Goods

25051 - 180 Ave SE, Kent WA 98042

*Hours By Appointment Or By Chance*

(252) 631-9770

FAX (253) 631-4780

This Is A One-Man Outfit

All Custom & Repairs Are Crafted By Myself

Email: [bjoneill@worldnet.att.net](mailto:bjoneill@worldnet.att.net)

## Custom Maker Stamps Grey Ghost Graphics By Jeff Mosby

Custom maker stamps, laser cut acrylic templates and custom tapoffs for the leather craft field.

Custom cut from your artwork at reasonable rates!

P.O. Box 30268, Myrtle Beach, SC 29588

(866) 205-9810 or (843) 903-4788

[www.greyghostgraphics.com](http://www.greyghostgraphics.com)



## Norm Lynds Toolmaker

Mallets, Modelers, embossing tools,  
lifters and others on request

Phone: (360) 668-7004

E-mail: [NWLynds@Juno.com](mailto:NWLynds@Juno.com)

# Leather Company Advertisement Page



**Toll Free:**  
**(800) 541-3264**  
**Bee Natural  
Leather-  
care**  
*The ultimate in  
leather care prod-  
ucts*

P.O. Box 820803, Vancouver, WA. 98682-0018  
(360) 891-7178, FAX: (360) 891-7166  
Email: [bnatura@pacifier.com](mailto:bnatura@pacifier.com)

## **SPOTLIGHT on PRO-CARV — Working and Tooling Leather Formulation**

### **DIRECTIONS:**

Dilute concentrate with water: 1 part PRO-CARV to 10 parts water is recommended for carving and tooling. When immersing the leather for shaping or forming, add 8 oz. PRO-CARV to 3 gallons of water.

### **NO CASING IS NECESSARY**

Leather can be immersed or sponged with this solution. PRO-CARV eliminates the need to case leather. PRO-CARV allows you to begin working with the leather after immersing for 3-5 minutes because of the very rapid penetration into even the thickest hide. Allow the surface to dry somewhat before beginning forming or carving.

**Contact MacPherson's, Hide Crafters, Goliger's Leather, and The Leather Factory for any of the fine Bee Natural Leather products.**

*Advertisement*

**RawHide Gazette**  
**Editor / Publisher:** Bob Stelmack  
**Co-Founders:** Bill Churchill & General Seymour  
**Treasurer/Secretary:** Barbara Lourdes

The RawHide Gazette is published monthly (12 times a year). Address for information and correspondence: PSLAC, c/o Barbara Lourdes, PO Box 1144, Auburn, WA, 98071, USA, Email: [billing@pslac.org](mailto:billing@pslac.org)

The RawHide Gazette is provided to the Puget Sound Leather Artisans Co-Op as a part of their membership benefits. Annual dues are \$24.00 USD per year.

All submissions are subject to editing for clarity and length. All articles submitted must be accompanied by name, address and permission of writer.

### **Advertising Rates**

The RawHide Gazette now offers advertising space to interested parties. Ad spaces are as follows:

1/4 Page or Business Card ..... \$60 USD  
1/2 Page ..... \$110 USD  
1 Full Page ..... \$200 USD

These rates cover a six month time period. PSLAC members are entitled to a 25% discount. Leather companies supporting PSLAC are given free Business Card size advertisement, additional space at regular rates.

The Puget Sound Leather Artisans Co-Op can be found at:

<http://pslac.org>

**Support our sponsor and take advantage of the PSLAC Membership Discounts...**



**Toll Free Order Lines:**  
**1-(888) 263-5277**  
**Fax: 1-(888) 263-5086**

**Hide Crafter Leatherscraft**

*Offering wholesale discount to PSLAC members*  
**ON-LINE CATALOG [www.hidecrafter.com](http://www.hidecrafter.com)**

7936 Camp Bowie West  
Ft. Worth, TX 76116

George Hurst, Manager  
email: [hcrafter@flash.net](mailto:hcrafter@flash.net)

## Steve Derricott



**Twister D Products**  
**301 E. Bower St.**  
**Meridian, Idaho 83742**  
**(208) 884-3766 - Fax (208) 884-3767**  
**A Division of Gfeller Casemakers, Inc.**

[www.lacemaster.com](http://www.lacemaster.com)

*Offering a 10% discount to the PSLAC members*

**Outside Washington**  
**1-800-343-9949**

**(206) 328-0855**  
**Fax: 328-0859**

**MACPHERSON**

**Leather Company**

Leather, Shoe Finding and Saddlery

*Offering a 30-40% off retail discount to the PSLAC members*

**Greg MacPherson**

**519 - 12th Avenue S.**  
**Seattle, Washington 98144**

## GLOBAL LEATHERS



**Web site: [www.globalleathers.com](http://www.globalleathers.com)**  
**Telephone : 212-244-5190**  
**Fax : 212-594-7515**  
**e-mail: [globalleathers@usa.net](mailto:globalleathers@usa.net)**  
**Paul Crystal**

*Offering a discount to PSLAC members*

**...more sponsors on the following page...**





## Dusty Johnson

**PLEASANT VALLEY SADDLE SHOP**  
1220 S. County Rd. 21  
Loveland, CO 80537  
Phone: (970) 669-1588  
Fax: (970) 669-1589  
E-Mail: dusty@pvsaddleshop.com  
URL: <http://www.pvsaddleshop.com>

*Offering a 20% discount to the PSLAC members*

## BRETTUNS VILLAGE LEATHER

**Selling odd lots, miscellaneous overstocks,  
bargain leathers and leathercraft  
accessories, all from Maine, only online**

Sides, Full Hides, Buckles, Key Rings, Laces, Thread  
Tools, Rivets, Scrap Pieces, Elk & Buffalo Scrap

**Always Free Shipping in the 48 States**

[www.brettunsvillage.com](http://www.brettunsvillage.com)

## Leather Factory

**Durham Hefta**  
Manager



**Portland**

Phone (503) 255-8818  
Fax (503) 255-9011  
Toll Free (888) 277-3360  
[www.leatherfactory.com](http://www.leatherfactory.com)

13221 N.E. Whitaker Way  
Portland, OR 97230-1128

*Offering a wholesale discount to the PSLAC members*



## Leather, Suede, Skins, Inc.



261 West 35th Street  
11th Floor, New York, NY 10001  
Tel: (212) 967-6616  
Fax: (212) 564-5759  
[www.leathersuedeskins.com](http://www.leathersuedeskins.com)  
Email: [leather.suede.skins@att.net](mailto:leather.suede.skins@att.net)

*Offering a 10% discount to the PSLAC members*

## Tandy Leather Boise

**JoAnne Tackitt, Manager**  
285 N. Orchard St.  
Boise, ID 83706



**Toll Free:**  
**1-800-930-2850**  
(ph. 208-375-5589. Fax. 208-375-7168)

<http://www.tandy-leather.com>

*Offering a wholesale discount to the PSLAC members*

## The Leather Factory

**Kermit P. Creek**  
Manager



**Billings**

Phone (406) 256-1355  
Fax (406) 256-1360  
Toll Free (888) 277-3323  
[www.leatherfactory.com](http://www.leatherfactory.com)

115 North 30th Street  
Billings, MT 59101-2032

*Offering a wholesale discount to the PSLAC members*



## TWLeather, Inc.

**Toll Free: 1-800-477-9923**  
2017A White Settlement Rd.  
Fort Worth, TX 76107  
(817) 877-5427, Fax (817) 877-5432

*Offering a wholesale discount to the PSLAC members*

## Tandy Leather

**Jim Linnell**  
Director of Operations



**Toll Free:**  
**1-888-890-1611**

<http://www.tandy-leather.com>

*Offering a wholesale discount to the PSLAC members*



## Leather Factory Spokane

28 West Boone Ave, Spokane, WA 99201  
Phone: (509) 328-9939  
Toll Free: 1-800-822-8437  
Fax: (509) 326-7019

*Offering a wholesale discount to the PSLAC members*

[www.leatherfactory.com](http://www.leatherfactory.com)



Email: [jwleathercrafter@qwest.net](mailto:jwleathercrafter@qwest.net)

(503) 293-2833

Fax: 977-1762

*J & W*

*Leather Crafters*

Leather Repair: Saddles, Tack, Harness, Chaps, anything  
Leather except clothing. We make new Items & Custom Orders

<http://www.users.qwest.net/~jnoecker/leather/>

*Offering a 10% off retail discount to the PSLAC members*

"It never hurts to ask!"

Joseph & Wendy Noecker

3912 SW Dolph CT  
Portland, Oregon 97219

**Taking I-90**

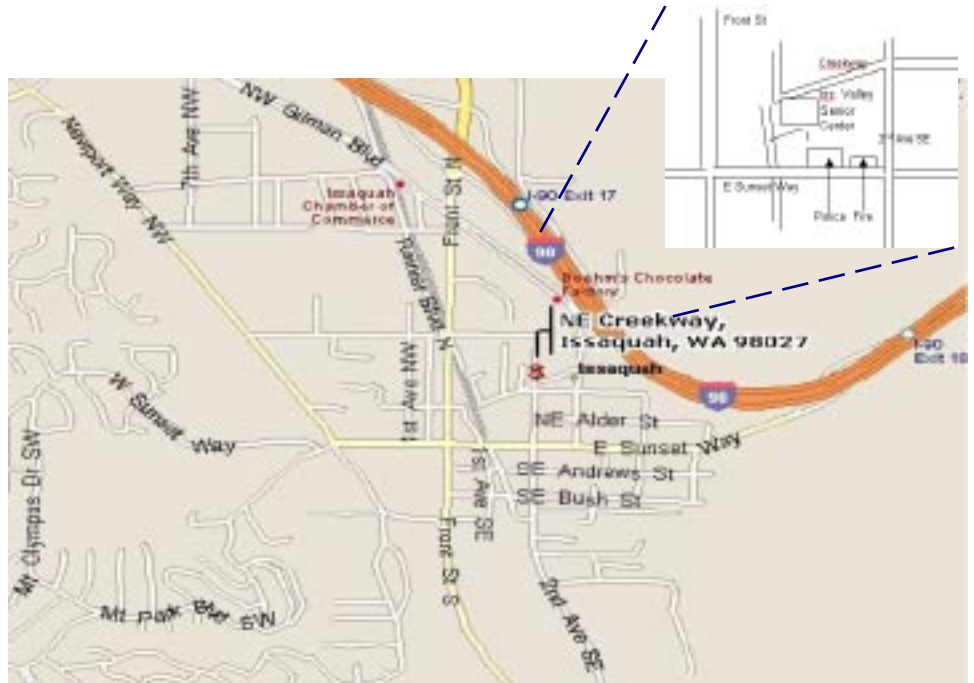
**From Auburn:** come north on Hwy167, or I-5, then I-405 north, then onto I-90, going east:

**From Everett:** South on I-5 to 405 South, or to I-90, going east:

From I-90 get off on exit 17/Front St., and bear right onto Front Street. At the third stoplight, turn left onto E Sunset Way, then see below:

**Taking Hwy 18 from around Auburn to Issaquah**

Get on Hwy 18 going East, from Auburn, it's about 12 miles to Maple Valley, then at about 2 ½ miles after Maple Valley, look for the turn off to Issaquah Hobart Rd SE, turn onto ramp 276th Ave SE and go 0.6 miles, bear left onto Issaquah Hobart Rd SE. It's about 8 ½ miles from there to Issaquah. Hobart becomes Front Street S, which takes you into downtown Issaquah. Turn right onto E Sunset Way, then see below:



**After turning onto E Sunset Way:**

go two blocks (past the Police and Fire Stations), turn left onto 2<sup>nd</sup> Ave SE, go past the old Senior Center building on your left, and a baseball field, then left onto NE Creekway, go almost to the railroad tracks. The new Issaquah Valley Senior Center is a brick building on your left, parking in front of it. There is also parking behind, from Sunset, turn left into the parking area, right before the Police Station (look for a large parking sign on your left), and follow it till you see a kids play ground. Address: 75 NE Creekway, Issaquah, WA 98027

---

---

**PSLAC  
c/o Barbara Lourdes  
PO Box 1144  
Auburn, WA 98071  
USA**

