

Raw Hide Gazette

Copyright © 2007 by PSLAC, All Rights Reserved

"Without question, the Raw Hide Gazette is by far the best and most informative and comprehensive Guild publications of all of them! You are to be commended for your very fine and professional efforts. Keep up the good work. With admiration"
/signed/

Al & Ann Stohman, December 1997

Puget Sound Leather Artisans Co-Op

March 2007

Hide Highlights

Page

- 1 MacPherson Meeting
- 3 Linda's Bracelet
- 3 Cat Carving Workshop
- 5 Ken's Knothole
- 6 North Breakfast Report
- 6 PSLAC Current Schedule
- 6 South Breakfast Report
- 7 North Breakfast Report



MacPherson Leather Company

Sunday, February 11th, 17 of us descended on Greg MacPherson & the staff of MacPherson Leather for our traditional February meeting.

As usual, we all enjoyed hearing the updates from Greg on the state of the leather industry and the goods which MacPherson's has been supplying to the area since the early 1900's. MacPherson Leather is a generational family business dedicated to providing excellent service and expertise for all their customers needs

Greg announced that his sister would be taking over the operation and management of MacPherson Leather and introduced the staff. We will all miss

his knowledge and insight gained over a lifetime of working in the leather industry. We wish him the best in his new endeavors.

We also took advantage of the PSLAC discount and stocked up on leather, supplies, tools and hardware. We were able to wander through the warehouse and see the amazing selection of shoe and backroom supplies in addition to saddlery, tack, leather and leather care.

An interesting part of the store is the scrap bin (several large bins actually) that contain a huge variety of scrap. Everything from strap, veg & chrome tan, shoe & clothing leather. You

**Special Edition
for mailed copies:**

**includes March and
April editions with
the advertising
section after
the April articles**

name it! Small project heaven! Scout and youth leaders can really benefit from this valuable resource.

MacPherson Leather Company
519 12th Avenue South
Seattle, Washington 98144

STORE HOURS:
Mon - Fri 8 am to 4:30 pm
Saturday - 10 am to 3 pm

Toll Free: 800-343-9949
Phone: (206) 328-0855
Fax: (206) 328-0859
<http://www.macphersonleather.com>



Lined up to purchase (my red & lime-green rabbit pelts are on the left)

Meeting in the warehouse

Paula's finished Cowboy Cuffs

General shooting the cat



Hi Norman,

This is a bracelet that I just finished. It is based on a training CD I purchased from Rene Berends. However, after about thirty hours over the last year I finally figured out how to make it into a bangle bracelet without a clasp. It really is pretty and you can hardly tell where it starts and ends. With more practice, you really won't be able to tell where it starts and ends.

Warmest regards,

Linda



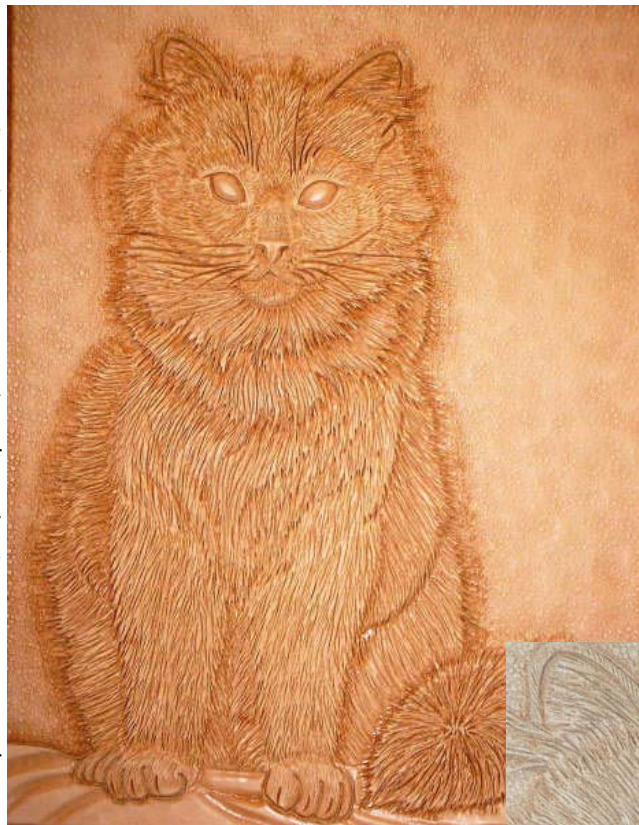
.....

Cat Carving WORKSHOP

On Saturday, February 24th, a small group of us met at General's house for a carving workshop led by Paula. Attending were General, Paula, Ken Eriksen, Barbara Lourdes, Norm Lynds, James Hamilton and Len Madison .

Before describing the carving, Paula very seldom glues her leather to anything when carving. She starts with a piece of leather that is larger than the finished project will be. The outer surfaces keep the leather from stretching very much. Also, those outer areas can be used for practice cuts, doodling, or whatever. Here we were working with 8 to 10 ounce leather.

The pattern for the carving was of a Persian cat from an old Tandy doodle page. This carving is a work in creating depth and layering of the hair by using various floral tools and the swivel knife. After tracing the pattern onto the leather the few swivel knife cuts in the outline were cut. The rest of the edges were stamped with the F902 and F895 to obtain the rough edges for the ends of the hair. The eyes were then formed. The contours were stamped with various floral tools and the beginning of the layering was started with the 2 above listed tools.



directing sounds, and protection from injuries to name a few.

The layering continued with the floral tools, and then continued by using the "hair" blades to mark the directions and then cutting the individual hairs with the swivel knife. By the end of the day most of us had proceeded to starting the swivel knife cuts. We will finish the picture at home and use it for the painting class scheduled for May 26th.

Ann, again, provided a delicious lunch of clam chowder and sandwiches. Thank you Ann!

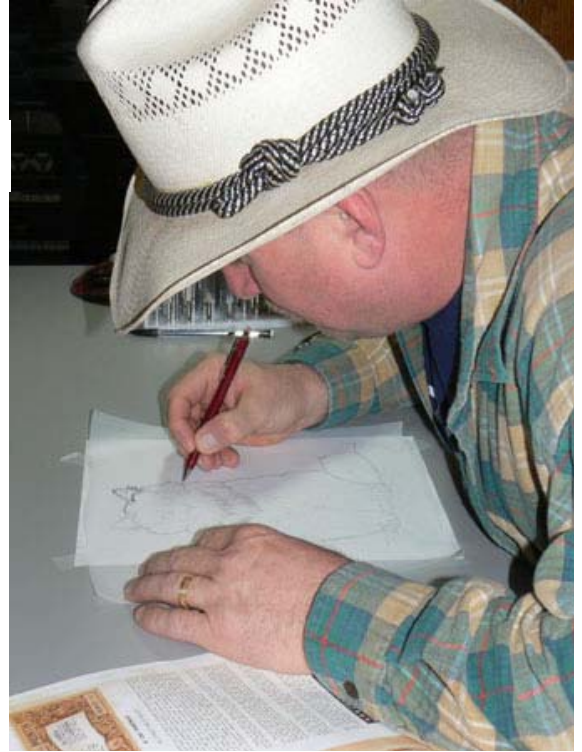
Norm

When working with animals, there are no straight lines or flat surfaces. Watch especially the way the hair falls. There are reasons for the flowing in different directions. One is for the efficient shedding of water. Other "jobs" that the hair does is deflect wind, absorb or reflect heat from the sun, insulation, camouflage, signaling, antennae for feeling in darkness, collecting and



Cat Carving WORKSHOP

James copying the pattern

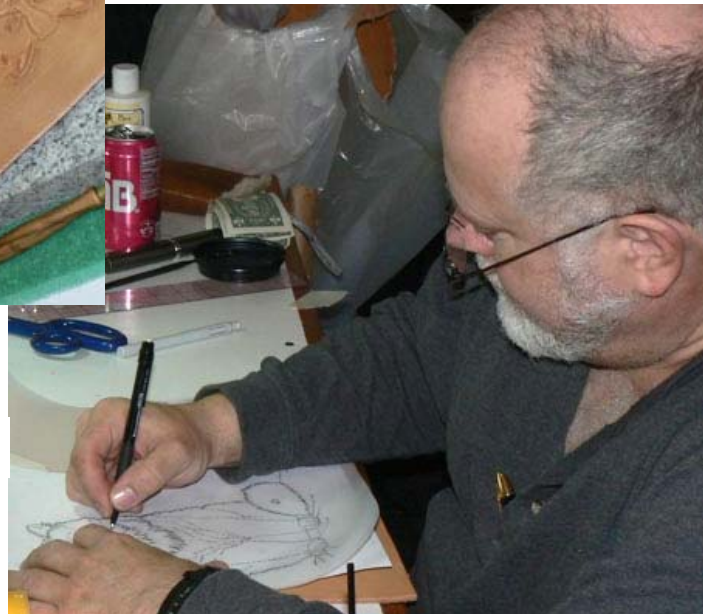


Len Carving the outline



Paula stamping

Ken tracing the pattern





KEN'S KNOTHOLE:

Well, the 27th annual Cascade Mountain Man Craft and Gun Show has come and gone. It's currently held at the Evergreen Fairgrounds in Monroe, WA. It's generally the 2nd weekend in March. For those who have never been, it's the largest show of it's type on the West Coast, specializing in crafts, gun's, accoutrements, books, furs, hides, beads, etc. for the periods from Colonial America through the Fur Trade Era up to the 1840's. We had about 110 traders in two buildings, all of whom dress up in period outfits and many of the folks from local black powder shoot-

ing clubs also dress up and come and make a day of it, catching up with friends from the summer rendezvous circuit. I've included a few pictures, but had some operator error difficulties with my new digital camera and the better ones were pretty fuzzy. There are a lot more pictures of past shows at the Cascade Mountain Men website: <http://www.cascademountainmen.org/gunshow.htm> I had my usual couple of tables there and had some round ball bags finished and even sold a few. But what got a whole lot more attention was some of the more modern artwork type leatherwork I had on display, from some of our PSLAC class/seminars. I had some of my decorated leather thread caddy's,

the leather covered book from Paula's class, a leather bowl, the carved/colored vase from Joe Barth's class. The one that got the most comments was the embossed buffalo from a Rob Barr class a few years back.

While I had a great time at the show, I did wind up missing John's class that Saturday on designing and making the liner for a wallet, which is something I've never done – too many hobbies and not enough time to do 'em all well. It sounds like those that made it had a great time and learned a lot. I'm hoping we can talk John into repeating this class sometime later in the year, hopefully when I can make it!
Ken



PSLAC CURRENT SCHEDULE FOR 2007

General Member's meetings are on the 2nd Sunday of each Month.

Mini-Demos at meeting

April 15th (Sunday after Easter) - Braiding 6-strand lanyard without core with Paula.

May 6th (Sunday before Mother's Day) - to be set.

June - B-B-Q Picnic, Garage Sale and Bill Churchill Award.

July/August - No meeting for Summer Months.

September - Luggage Tags with John Wickstrom

October - to be set.

November - to be set.

December - to be set.

All-Day Workshops

April 28th - Inseting Exotic Leather with Paula - at Len's home.

May 12th - Finish carving the Persian Cat - General's.

May 26th - Jackie Halliday - Coloring the Persian Cat - General's.

June 30th - Braid 6-strand with core dog leash with Paula - General's.

Possible change - we could have Robert Black from Oklahoma.

July 28th - U.F.O. Meeting to be at General's home. (Unfinished Fair Objects).

August 25th & 26th - Peter Main. Stamping and embossing floral corner and buffalo for CD case. (venue to be announced)

September 29th - Tentative, Belt inset with strips of beading with Carol Gessel at Carol's Workshop.

October 27th - To be set.

November 24th? - To be set.

December 29th - To be set.

South Breakfast Report

February 17th The Homestead Restaurant once again hosted the South End Breakfast. 15 PSLAC members and spouses attended. We drank gallons of coffee, ate great food and discussed everything from Harleys to woodworking and of course leatherworking. Dick Gehring brought some of his braiding (see the North report for more) and John Wickstrom brought a notebook (several pictures of John's work will be in the April South Breakfast Report).

The breakfast is at 8:30 AM every third Saturday.





James Hamilton in deep concentration

Letty Lynds and Judy Ferguson



Sister Rachael



Robb Grey's cases



North Breakfast Report

There were 12 people at the North End breakfast on Friday, February 23rd. General and Ann ventured up from Orting, and James Hamilton wandered down from outside Concrete. The rest of us were somewhere between. It was Dick Gehring's first breakfast with us.

Show and tell was rather short this month. Dick brought some of the "Hawg Poppers" that he braids. These have a clasp that snaps onto the ends of the handlebars on motorcycles and the lace ends flap in the breeze. Robb Grey brought a couple small leather cases that he made with fossilized walrus tusk ivory inset in a bezel on the front.

Norm



Dick Gehring with a Hawg Popper



Carol Gessell and George Marquis



PSLAC Members Only Advertisement Page

Any PSLAC Member can advertise leather related products or services, subject to approval. Just send your text, picture and/or logo to stelmack@nwlink.com

MARQUIS UNIQUE LEATHER ARTISTRY, LLC

Paula and George Marquis

www.marquisuniqueleather.com



I make almost anything that can be made from leather and can be sewn by hand. I do not like sewing machines and cannot get along with them. Therefore, that excludes making clothing, which entails using very soft leather.

A lot of my works are 'bespoke items', meaning, one of, individual custom requests, ranging anywhere from books and folders to rifle scabbards, holsters and golf bags, fully carved and stamped, and any and all articles in between, which also includes saddles and harness.

I like to make articles that are practical, such as all kinds of bags (including brief cases, bible covers, etc.), belts with a challenge, mouse pads, tissue box holders, knife and sword sheaths, 11th Century bottles (sealed so they can be used as wine carafes), to various types of boxes (both useful and decorative) and other artistic decorations including such things as moulded bowls and vases as well as framed pictures.

Phone: (206)-523-6295

Email: marquispg@aol.com

DIAMOND P LEATHER SHOP PHIL O'NEILL

Saddlery: New, Used-Repair

Custom Made Leather Goods

25051 - 180 Ave SE, Kent WA 98042

Hours By Appointment Or By Chance

(252) 631-9770

FAX (253) 631-4780

This Is A One-Man Outfit

All Custom & Repairs Are Crafted By Myself

Email: bjoneill@worldnet.att.net

Custom Maker Stamps Grey Ghost Graphics By Jeff Mosby

Custom maker stamps, laser cut acrylic templates and custom tapoffs for the leather craft field. Custom cut from your artwork at reasonable rates!

P.O. Box 30268, Myrtle Beach, SC 29588

(866) 205-9810 or (843) 903-4788

www.greyghostgraphics.com

Leather Big Book Covers www.leatherbigbookcovers.com by Bob Stelmack

Leather Big Book Covers
(This site is a 100% internet only business. Domestic U.S.A. and U.S.P. items from (200) orders are guaranteed.)

IMPORTANT NOTE: These Leather Big Book Covers are only available in the United Kingdom and February 2007. When they will be available in the United States!

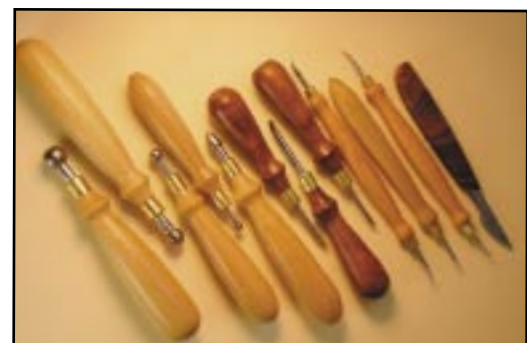
- Basic and Custom made to order. Available. Leather Big Book Covers for your Big Book.
- Each cover is handmade from various types of leather. Most are hand-stamped with vegetable tanned cow hide in black, brown or natural. The cover is of a 'zip-on' design, much like the old way we used to cover our school books without any paper grocery bags. Most of the covers are classic hand-stamped cow hide in many colors. Here are some samples of the basic Big Book cover.

- The basic Big Book cover can be decorated with a name and address label (and optional Screen-Printer), and used as decorative name tags.

- Let your imagination run wild and have a custom Leather Big Book Cover made for you. These covers are 'zip-on' and are great for gifts. Here are some samples to get your opinion.

- Click here for a listing and prices.
- Click here for more cover selections.

"Leather Cover" Book
Email: stelmack@stelmack.com



Norm Lynds Toolmaker

Mallets, Modelers, embossing tools,
lifters and others on request

Phone: (360) 668-7004

E-mail: sagerat2003@yahoo.com

Leather Company Advertisement Page



Toll Free:
(800) 541-3264
**Bee Natural
Leather-
care**
*The ultimate in
leather care prod-
ucts*

P.O. Box 820803, Vancouver, WA. 98682-0018
(360) 891-7178, FAX: (360) 891-7166
Email: bnatura@pacifier.com

SPOTLIGHT on PRO-CARV — Working and Tooling Leather Formulation

DIRECTIONS:

Dilute concentrate with water: 1 part PRO-CARV to 10 parts water is recommended for carving and tooling. When immersing the leather for shaping or forming, add 8 oz. PRO-CARV to 3 gallons of water.

NO CASING IS NECESSARY

Leather can be immersed or sponged with this solution. PRO-CARV eliminates the need to case leather. PRO-CARV allows you to begin working with the leather after immersing for 3-5 minutes because of the very rapid penetration into even the thickest hide. Allow the surface to dry somewhat before beginning forming or carving.

Contact MacPherson's, Hide Crafters, Goliger's Leather, and The Leather Factory for any of the fine Bee Natural Leather products.

Advertisement

RawHide Gazette

Editor / Publisher: Bob Stelmack
Co-Founders: Bill Churchill & General Seymour
Treasurer/Secretary: Barbara Lourdes

The RawHide Gazette is published monthly (12 times a year). Address for information and correspondence: PSLAC, c/o Barbara Lourdes, PO Box 1144, Auburn, WA, 98071, USA, Email: billing@pslac.org

The RawHide Gazette is provided to the Puget Sound Leather Artisans Co-Op as a part of their membership benefits. Annual dues are \$24.00 USD per year.

All submissions are subject to editing for clarity and length. All articles submitted must be accompanied by name, address and permission of writer.

Advertising Rates

The RawHide Gazette now offers advertising space to interested parties. Ad spaces are as follows:

1/4 Page or Business Card \$60 USD
1/2 Page \$110 USD
1 Full Page \$200 USD

These rates cover a six month time period. PSLAC members are entitled to a 25% discount. Leather companies supporting PSLAC are given free Business Card size advertisement, additional space at regular rates.

The Puget Sound Leather Artisans Co-Op can be found at:

<http://pslac.org>

Support our sponsor and take advantage of the PSLAC Membership Discounts...



Toll Free Order Lines:
1-(888) 263-5277
Fax: 1-(888) 263-5086

Hide Crafter Leathercraft

Offering wholesale discount to PSLAC members
ON-LINE CATALOG www.hidecrafter.com

7936 Camp Bowie West
Ft. Worth, TX 76116

George Hurst, Manager
email: hcrafter@flash.net

Steve Derricott



Twister D Products
301 E. Bower St.
Meridian, Idaho 83742
(208) 884-3766 - Fax (208) 884-3767
A Division of Gfeller Casemakers, Inc.

www.lacemaster.com

Offering a 10% discount to the PSLAC members

Outside Washington
1-800-343-9949

(206) 328-0855
Fax: 328-0859

MACPHERSON

Leather Company

Leather, Shoe Finding and Saddlery

Offering a 30-40% off retail discount to the PSLAC members

Greg MacPherson

519 - 12th Avenue S.
Seattle, Washington 98144

GLOBAL LEATHERS



Web site: www.globalleathers.com
Telephone : 212-244-5190
Fax : 212-594-7515
e-mail: globalleathers@usa.net
Paul Crystal

Offering a discount to PSLAC members

...more sponsors on the following page...



Dusty Johnson

PLEASANT VALLEY SADDLE SHOP
1220 S. County Rd. 21
Loveland, CO 80537
Phone: (970) 669-1588
Fax: (970) 669-1589
E-Mail: dusty@pvsaddleshop.com
URL: <http://www.pvsaddleshop.com>

Offering a 20% discount to the PSLAC members

BRETTUNS VILLAGE LEATHER

**Selling odd lots, miscellaneous overstocks,
bargain leathers and leathercraft
accessories, all from Maine, only online**

Sides, Full Hides, Buckles, Key Rings, Laces, Thread,
Tools, Rivets, Scrap Pieces, Elk & Buffalo Scrap

Always Free Shipping in the 48 States

www.brettunsvillage.com

Leather Factory

Durham Hefta
Manager



Portland

Phone (503) 255-8818
Fax (503) 255-9011
Toll Free (888) 277-3360
www.leatherfactory.com

13221 N.E. Whitaker Way
Portland, OR 97230-1128

Offering a wholesale discount to the PSLAC members



Leather, Suede, Skins, Inc.



261 West 35th Street
11th Floor, New York, NY 10001
Tel: (212) 967-6616
Fax: (212) 564-5759
www.leathersuedeskins.com
Email: leather.suede.skins@att.net

Offering a 10% discount to the PSLAC members

Tandy Leather Boise

JoAnne Tackitt, Manager
285 N. Orchard St.
Boise, ID 83706



Toll Free:
1-800-930-2850
(ph. 208-375-5589. Fax. 208-375-7168)

<http://www.tandy-leather.com>

Offering a wholesale discount to the PSLAC members

The Leather Factory

Kermit P. Creek
Manager



Billings

Phone (406) 256-1355
Fax (406) 256-1360
Toll Free (888) 277-3323
www.leatherfactory.com

115 North 30th Street
Billings, MT 59101-2032

Offering a wholesale discount to the PSLAC members



TWLeather, Inc.

Toll Free: 1-800-477-9923
2017A White Settlement Rd.
Fort Worth, TX 76107
(817) 877-5427, Fax (817) 877-5432

Offering a wholesale discount to the PSLAC members

Tandy Leather

Jim Linnell
Director of Operations



Toll Free:
1-888-890-1611

<http://www.tandy-leather.com>

Offering a wholesale discount to the PSLAC members



Leather Factory Spokane

28 West Boone Ave, Spokane, WA 99201
Phone: (509) 328-9939
Toll Free: 1-800-822-8437
Fax: (509) 326-7019

Offering a wholesale discount to the PSLAC members

www.leatherfactory.com



Email: jwleathercrafter@qwest.net

(503) 293-2833

Fax: 977-1762

J & W

Leather Crafters

Leather Repair: Saddles, Tack, Harness, Chaps, anything
Leather except clothing. We make new Items & Custom Orders

<http://www.users.qwest.net/~jnoecker/leather/>

Offering a 10% off retail discount to the PSLAC members

"It never hurts to ask!"

Joseph & Wendy Noecker

3912 SW Dolph CT

Portland, Oregon 97219

Taking I-90

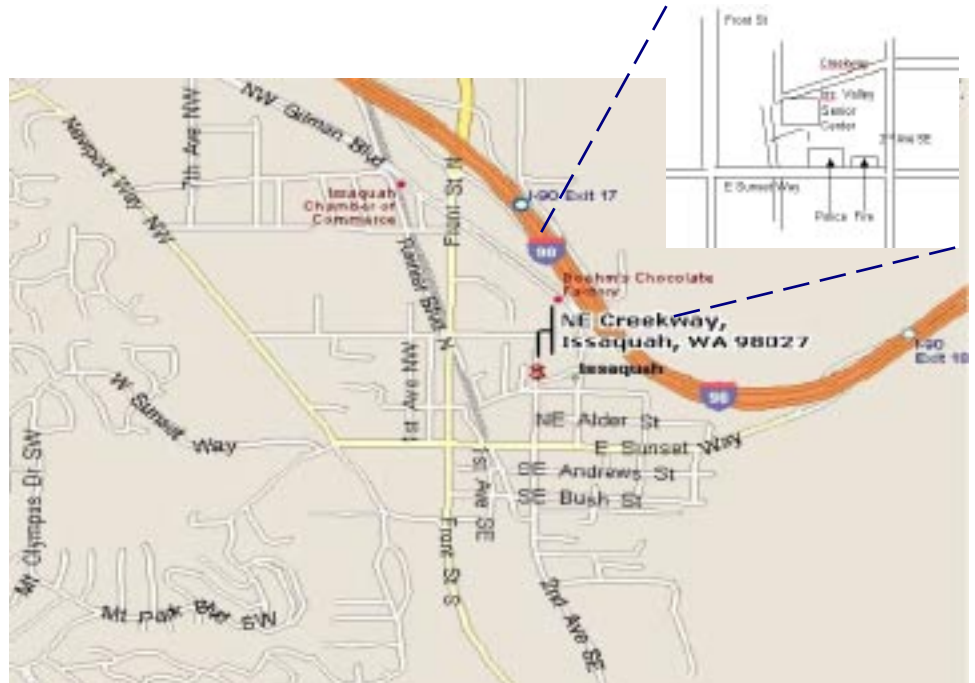
From Auburn: come north on Hwy167, or I-5, then I-405 north, then onto I-90, going east:

From Everett: South on I-5 to 405 South, or to I-90, going east:

From I-90 get off on exit 17/Front St., and bear right onto Front Street. At the third stoplight, turn left onto E Sunset Way, then see below:

Taking Hwy 18 from around Auburn to Issaquah

Get on Hwy 18 going East, from Auburn, it's about 12 miles to Maple Valley, then at about 2 ½ miles after Maple Valley, look for the turn off to Issaquah Hobart Rd SE, turn onto ramp 276th Ave SE and go 0.6 miles, bear left onto Issaquah Hobart Rd SE. It's about 8 ½ miles from there to Issaquah. Hobart becomes Front Street S, which takes you into downtown Issaquah. Turn right onto E Sunset Way, then see below:



After turning onto E Sunset Way:

go two blocks (past the Police and Fire Stations), turn left onto 2nd Ave SE, go past the old Senior Center building on your left, and a baseball field, then left onto NE Creekway, go almost to the railroad tracks. The new Issaquah Valley Senior Center is a brick building on your left, parking in front of it. There is also parking behind, from Sunset, turn left into the parking area, right before the Police Station (look for a large parking sign on your left), and follow it till you see a kids play ground. Address: 75 NE Creekway, Issaquah, WA 98027

**PSLAC
c/o Barbara Lourdes
PO Box 1144
Auburn, WA 98071
USA**

