

Raw Hide Gazette

Copyright © 2008 by PSLAC, All Rights Reserved

“Without question, the Raw Hide Gazette is by far the best and most informative and comprehensive Guild publications of all of them! You are to be commended for your very fine and professional efforts. Keep up the good work. With admiration”
/signed/
Al & Ann Stohman, December 1997

Hide Highlights

Page

- 1 Irving’s Leather at Waitsburg, WA
- 4 Bob Beard’s Jeweled Scarab Class
- 4 Sea Leather Spring Greetings
- 5 John Bianchi Class, Wickenburg 2008
- 8 Paula & George Marquis Visit the Desert Leathercraft Group in Richland, WA
- 8 PSLAC North Breakfast
- 9 Desert Leathercraft Group (DLG) Beginning Leather Class
- 10 PSLAC-East
- 10 Stan’s Inverted Carving Class
- 10 Jackie’s Extra Coloring Class
- 11 4-H Leather Demonstration in Rathdrum, Idaho
- 11 4-H Leather Demonstration in Sandpoint, Idaho
- 12 John Wickstrom’s Back-to-Basics Wallet Workshop
- 13 February Meeting Show & Tell
- 14 February Meeting Show & Tell (cont.)
- 15 Sewing Leather Patterns
- 15 Dave Puls Presentation
- 16 The Bill Churchill Children’s Leather Program 7th Annual AWARD Nomination Form for the Year 2008
- 17 Upcoming Events
- 18 Upcoming Events (cont.)

Meeting Announcement

NEXT MEETING

Sunday, April 13th,

Doors open at noon for:

Silversmithing and leather with Robb Gray

followed by the meeting at 2:00 pm



Irving’s Leather at Waitsburg, WA

Tucked in the Southwestern corner of Washington, east of the Touchet River Bridge, is a unique leathercraft store. **Irving’s Leather** is in the small town of Waitsburg just about an hour from the Tri-Cities. **Carla and Bill Irving** run this store and had recently relocated from Walla Walla, WA. What makes them different from most leather stores is that they do leather repairs and from what I saw they do a damned good job.

Irving’s Leather
353 Preston Ave.
Waitsburg, WA 99361
Ph: (509)-3376160
E-mail: irvingsleather@aol.com

They have a no nonsense workshop with two workbenches—one for stamp-

ing and the other for coloring and construction. They also take time to give advice and suggest the correct tool or material for the project at hand. They are authorized dealers for the **Tandy Leather Factory, Hide Crafters**, and deal with other leather suppli-





ers to get the product you need.

Carla and Bill have a nicely laid out small but well stocked store with a special table where students have some of their projects out for display. Carla wants to show people what can actually be made from the kits by real students.





They also have a vicious guard dog, pictured here, that Karen was holding.

All in all, for those who live in South-eastern Washington or Northeastern Oregon have a local place to go for leather supplies.

Bob Stelmack
Richland, WA



Bob Beard's Jeweled Scarab Class

Just got off the phone with **Bob Beard** and he is looking forward to coming to Spokane to do the Jeweled Scarab class that was canceled last year due to his fathers passing. The class will be held at the Lions Club in Rathdrum Idaho and we are tentatively scheduling it for the first weekend in August. The Jeweled Scarab is a class on setting precious stones in leather. See the following for more information:

This day and a half class focuses on the setting of a gemstone into leather. Our subject will be an embossed **Scarab Beetle**. This pattern and stone setting technique can be used on a variety of future projects.

Beveling, matting, backgrounding, filigreeing, plus embossing and coloring techniques will also be explained, demonstrated and practiced during this course.

Leather, colors, and finishes are included and will be supplied for the students. Gemstones that are to be set will be available at my cost. The stones I select for this project generally cost around \$8.00 to \$15.00 each depending on the type, size, and quality of the stones.

All skill levels in leather craft are welcome. This project is designed for a beginner as well as the master crafts person.

Date: Tentatively scheduled for Aug 2-3 (Saturday/Sunday) 2008.

Time: 10 AM to 5 PM Saturday, 10 AM to 2 PM Sunday

Location: Lions Club in Rathdrum, Idaho. Easy to find, just 25 miles east of Spokane, WA via Trent Avenue (Hwy 53) or take I-90 to Hwy 41 exit just east of Post Falls, ID and head north for 7 miles. Hwy 41 turns into Hwy 53 at light in Rathdrum. Go past High School and Super 1 Foods on right hand side then look for bright yellow bldg just east of Pine Grove Cemetery on left hand side. About 3 city blocks from light.

Cost: \$170. An \$85 non refundable deposit is required to reserve your spot. If the class is cancelled for any reason, your money will be refunded.

Facilities: The Lions Club has 6 RV sites with electrical and water hookups available



for \$15 per night. Let us know in advance if you want one of these reserved for you.

The Cedar Springs Bed and Breakfast (www.cedarsprings-bb.com) is located near Rathdrum. Call Ellen Larson at 888.441.9585 for accommodations and mention that you are taking the leather class.

Contact person:

Ken Bush
White Rose Leather
11923 E. Fairview Ave
Spokane Valley, WA 99206

509.926.2087
whiterosex@aol.com

Sea Leather Spring Greetings



We have a new offering in the form of stocklots in some major color groups: reds, blues, greens and browns.

We are also pleased to be extending a new promotional offer. With your purchase of one of our stocklots of fish leather, we will include one or more Cabezon fish leather belts free with your order:

* a stocklot order of value less than \$150 USD will receive a ladies Cabezon fish leather belt, while quantities last.

* a stocklot order of value between \$150 - \$300 USD will receive a men's Cabezon fish leather belt, while quantities last.

* a stocklot order of value greater than \$300 will receive both men's and ladies Cabezon fish leather belts, while quantities last.

We are interested in adding some content to our web site, from the point of view of the manufacturing process, in creating apparel or accessory items using our fish leather. We are not end product manufacturers ourselves, and currently offer some limited information at:

**[www.sealeatherwear.com/
designer-tips-for-fish-leather.php](http://www.sealeatherwear.com/designer-tips-for-fish-leather.php)**

If you are a manufacturer and would offer to write up some content specific to our leather, if we find it to be usable on sealeatherwear.com, we will acknowledge your authorship and/or web site.

I would like to thank those who have responded to our customer survey questionnaire, which is now on-line. Your feedback is always important.

If you have concerns or difficulties using our web site, or questions relating to our products or pricing, please get in touch. Thank you for your interest in our offerings.

Stanley Major

Sea Leather Wear
Calgary, Alberta, Canada
www.sealeatherwear.com
phone: 403-689-4701

John Bianchi Class, Wick- enburg 2008



The morning broke bright and clear. Not a cloud in sight. No frost as there had been the day before at home, north of Seattle. Typical high desert morning in Wickenburg, AZ.

Paula, Jeff, and I were there to participate in a holster making class hosted by the **Leather Crafters & Saddlers Journal** with **John Bianchi** the instructor. Sixteen students were participating in the class. We arrived at the classroom and found it well laid out, with stations at folding tables for each of us. Cutting surfaces were at each station. High work benches were around the perimeter of the room which would be well used during the class for lay outs, glue ups, fittings, finishing, polishing, and other work which required more space than we had at our stations. The high benches were appreciated as you could work without bending over. Two stitching machines, loaned by **Artisan**, were set up for class usage.

Dave Reis opened the session and introduced John Bianchi, founder of **Bianchi International**. After retiring from the company he founded **Frontier Gunleather** which specializes in "Old West" style belts, holsters, and scabbards. John then introduced his two assistants. **Matt Whitaker**

is his shop foreman and detail man. If John skips over some detail, Matt fills it in. In addition, Matt has his own custom leather business, specializing in high end rigs for engraved guns. Instead of traditional western style carving, he likes to replicate the style of engraving that is on the gun to leather. **Jim Travis Luz** is a retired Navy fighter pilot. He studied under John for several years and now operates his own custom leather shop in Colorado.

practical, the blades easily sharpened several times, and then easily replaced. Other tools used would be dividers, pencil, ruler or tape measure, several sizes of round punches, a couple sizes of bag punches, smooth faced hammer, edge bevelers, French skiver, antler slicker, boning tool, awl, pliers, templates, and 5 different shop made tools.

The history of holsters was briefly discussed, starting with the pommel holsters which fit over the horn or peg on the front of saddles. These were made mostly for the huge blackpowder single shot pistols. The first belt and holster rigs were made for the caplock black powder revolvers. As it was time consuming to reload, many wore a pouch on the belt that would hold an additional loaded cylinder or two. The "Wild

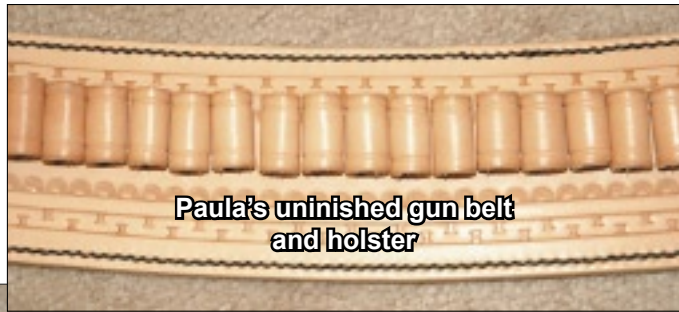


John discussed the various tools to be used. All edged tools must be very sharp. This includes all knives, edgers, skivers, punches, and everything else with a sharp edge. In their shop they use mainly utility knives for cutting as they are

West" period lasted for about 25 years, from the end of the Civil War to 1890. The first belts were straight and made of pigskin as it was soft and strong. They were folded in half lengthwise and sewn. This made a long pouch in which the owner carried his money



and important papers, thus called a "money belt". The only determining factor in sizing of holsters was barrel length. Wear and weather formed the belt and holster to the person and pistol. Between 1890 and 1900 makers started noticing the worn shapes of the rigs and



holster pouch at the bend, and both sides of the top of the belt loop. This will help in making the bends lie smooth. Locate the slits to make the holster bands or the bag punch holes if the bands are to be added. If the slits are to be cut in the skirt, remove a small



started making the curved belts and holsters made for specific pistols.

There were no drop loop or Buscadero type holsters during this time. This was an invention of **Arvo Ojala** in the late 1930's and was known as the "Hollywood" holster, which was predominant in the movies from the 1940's on.

SAFETY FIRST: ALWAYS CHECK THE WEAPON TO ASSURE THAT IT IS UNLOADED. NO LIVE AMMUNITION IN THE WORK AREA. USE EMPTY CASES OR MAKE UP DUMMIES AND MARK THEM.

We all gathered around as John demonstrated the making of a traditional western style holster pattern. He stressed that his are not copies of the old rigs, they are traditional Western style belts and holsters, made the way they should be made, not the way they were. He likes to use legal size manila folders and a carpenter's pencil for the layout. Open the folder and lay the pistol down with the frame and barrel lying approximately 1/4 inch from the fold. On the fold mark either the frame/hammer junction or the top of the cylinder. Then, about 1/2 inch outside the trigger guard draw around the trigger guard, down the frame and barrel to the end of the barrel. Smoothly round over across the end to the fold. Remove the pistol and draw the lip from the trigger guard to the mark made on the fold.

Cut out the front part of the holster. Now figure the amount of drop and the drop angle. Fold the pattern there. Cut off the



excess from the front of the pattern and tape it into position for material to draw the rear skirt. Hold the pistol inside the pattern and make any adjustments necessary to assure that there is sufficient material there before cutting out the rear of the holster pouch. Determine if the holster pouch will fit through slots in the skirt or will holster bands be added. Draw the skirt accordingly. This will be done with the pattern folded at top of the belt loop and the pouch lying in position. Make sure that the belt loop is sufficiently wide enough to fit the belt that it will be carried on. Cut out the pattern. This is the "first cut".

Now, finesse the pattern. All the lines should flow with no sharp corners or angles. Relieve the front edge of the bottom of the

amount of material and round over the ends to prevent tearing of the leather. Locate the hammer thong holes, 1 inch from the edge of the lip and the second hole 1 1/2" from the first and at an angle. If the bands are to be added, hold the pistol in the pouch, and hold the bands in place. This to determine where they are to be located. Keep finessing the pattern until satisfied.

The leather used by Bianchi is veg tanned double shouldered; 5-6 oz, for the front sides of both belts and holsters and 3-4 oz for the lining. The billets and holster bands are also made of the 5-6 oz. Cartridge loops are split to about 2 oz.

Each member of the class had received a class packet from Bianchi and had been contacted by Matt to provide the necessary physical measurements, make, model, caliber, and barrel length of pistol the holster was being made for. To save time the major parts were cut out and packaged in kits. As loop placements on Buscadero belts must be exact, those belts were not cut to final size and shape until the class reached the belt fitting stage. At that time Travis led each through the fitting, placement, measurement, and cutting of the loops.

Cut all the front pieces out to size and the linings oversize. Locate and punch all necessary holes, slits, etc. A French skiver was used to skive the areas necessary for proper fit and smooth curvature. This is done on the flesh side of the front piece only.

The holster front piece is then glued to the



Skive the bottom 1" of the welt filler piece from full width down to a feather edge. Dampen the front edge of the holster pouch to help in folding a smooth curve. Apply glue to approx. 1/4" along the inside edges of the welt and to both sides of the welt filler piece. Position and fold the pouch. Hold in place and rap with a smooth faced hammer to assure complete adhesion between the two pieces. The excess liner is trimmed off and the edge surfaces edged, sanded, burnished and edge

liner, and either boned in place or tapped with a smooth faced hammer to assure complete adhesion between the two pieces. The excess liner is trimmed off and the edge surfaces edged, sanded, burnished and edge

place and stitch the welt, backing up approx 4 stitches at each end to lock the stitching in place. Edge the welt, sand smooth, burnish and finish.



Dip the pouch in warm water for a few seconds to dampen it and do the initial forming using 2 specialized tools. These open up the pouch and trigger guard area. Place the pistol in the pouch and seat it. Using your fingers, thumbs, and hands, continue the forming of the holster. Use lots of pressure around the cylinder end and up and down the barrel and ejection rod. These contours should

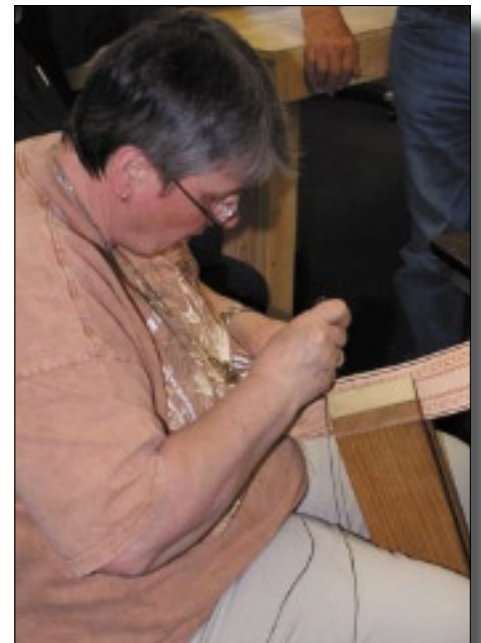
coated. Using dividers, scribe the stitching lines. Measurements are: 3/16" across the bottom of the holster, across the lip around the belt loop and skirt, and 5/16" down the welt. If holster loops are to be added, scribe around them from just in back of the buckle. The flat sewing is done, starting on the lip at the welt, across the lip, around the belt loop and skirt to the lip at the top of the welt on the other side. Then across the bottom of the holster from a point approximately 1" up the welt, down across the bottom, and up the other side approx. 1". Flat sew the holster loops. After the sewing is finished, lightly dampen the stitched area with a sponge and bone to close up the stitches and smooth the stitch line.

show lightly through the leather. After the holster is formed, bone it with an antler or boning tool. This continues the fitting of the holster to the gun and burnishes the leather. Remove the pistol, dip the bend of the belt loop in the warm water, place it over a corner and tap the bend with a smooth faced hammer to tighten up the bend. Then bend a small radius in the belt loop from the rear to fit it to the belt. Lay aside to dry.

On the belt, first lay out the main stitch line 3/16 inch around the belt. Then locate the position of the cartridge loops. The center of the loops should be placed at the center of the belt, measuring from the buckle tongue to the wearing hole on the billet. Scribe a line 1/2" from the edge of the belt along the length of where the cartridge loops will be



located. Another line scribed 7/8" below that. Vertical sewing lines then located and scribed. Spacing for the verticle lines is 5/8



inch for 44 and 45 caliber and 1/2 inch for 38/357. Prepare the belt loop strip by coating it with Resolene both inside and outside. This will partially seal it to help prevent over accumulation of oil during finishing and accumulation of dirt and crud later. Mark the stitch lines on the strip; 1 1/8" for 44/45 and 1" for 38/357. Using a 7/8" bag punch, cut holes on the inside edge of both outer loop lines. Put one end of the strip through one of the holes and line up the stitch mark. Skive and glue in place. Stitch outside the loop hole to lock in place. Make the loops and stitch each in place. When reaching the other end, make the loop, put the end through the hole, stitch in place, and glue down the tip. Assemble the billets and belt loops and sew in place. Glue the belt liner on, trim and finish all edges. Flat sew around the belt. Sew one end of the belt loop at this time, if there is one, and hand sew the other end.

If it is a Buscadero rig, the loops cut in the belt should be the same size as the belt loop on the holster so that the whole loop is filled.

Finish all the parts. Bianchi uses a dipping oil with stain in the oil. Several coats are applied, letting it dry between coats, until the desired color is achieved. It is then finished with a couple light coats of Resolene. Polish with a soft cloth or sheepskin.

Install all hardware with the necessary rivets or Chicago screws and assemble.

Sixteen fine rigs were produced by the class. There were 4 repeat students from last year's class, and several were ready to sign up for next year. A just tribute to the quality of the instructors.

At the end of the class Paula Marquis presented John with a tooled album and Matt with a pair of tooled cowboy cuffs. She was a repeat student from last year and she wanted to show her appreciation for the excellent instruction by making and presenting the gifts.

Norm Lynds

(ed. note: Paula will be scheduling a class to instruct PSLAC members the same course in the near future. Keep reading the PSLAC Workshop Schedule at:

www.pslac.org/schedule.htm

...for details on date and locations.)

PSLAC North Breakfast

- 1 - Norm's bouncer
- 2 - Robb Gray's knife #2
- 3 - Robb Gray's knife #3



Paula & George Marquis Visit the Desert Leathercrafters Group in Richland, WA

Paula called and we made a quick assembly of the **Desert Leathercrafters Group (DLG)** to discuss their recent visit to Wickenburg, AZ. Paula brought her unfinished gun belt and holster from the **John Bianchi** class (pictured elsewhere in this issue). We also discussed some upcoming workshops for the Tri-Cities and Spokane area.

Paula also shared some of the newest stamping tools that she acquired remarking that: "Now I've spent my birthday money, my anniversary money, my Christmas

money ..."

We look forward to her classes and will certainly have a full house.



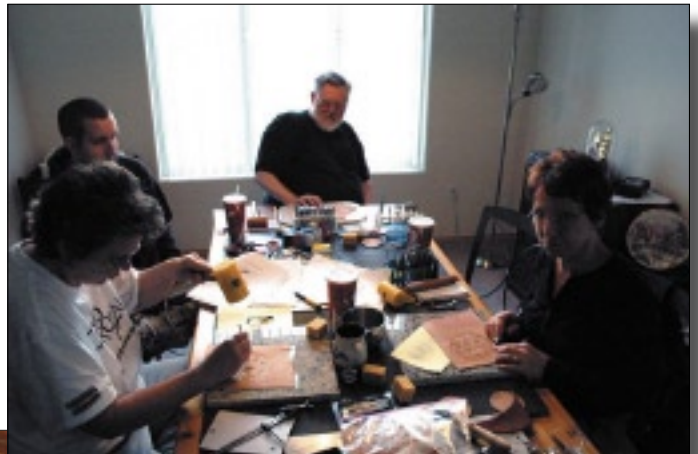
Bob Stelmack
Richland, WA



Desert Leathercraft Group (DLG) Beginning Leather Class

On February 24rd we had a Beginners Leathercrafting Class followed by another class one a week later. These classes introduced the basic casing, swivel knife use and the basic 6 stamps for tooling classic western floral style carving.

Bob Stelmack,
Richland WA



PSLAC-East

The regular monthly 2nd Saturday class at the Spokane Leather Factory will be held on March 8th. starting at 10am until Noon. By the way, our group is now called PSLAC-East since we joined with PSLAC (Puget Sound Leather Artisans Co-op) and share our information with the Rawhide Gazette.

At the beginning of class, while the leather is being cased and prepared, **Jackie Holliday** will demonstrate how to use a round knife in preparation for the Holster class presented by **Paula Marquis** later this summer. More info on that class will follow.

Then, **Stan** will show you how to do an inverted floral carving until Noon. A very good reference book for Stan's class is called "**Inverted Leather Carving**" by **Al Stohman**. He will discuss the basic techniques, tools, uses, etc. and you will actually carve the "**Rose Mallow**" flower shown on page 45 of the above referenced book. Some recommended tools are numbers:

- A98
- F120**
- B198
- S632
- P861
- H907
- B936
- F976

If you don't have or can't find these exact tools, try to find ones close in number. Example, P861 is no longer made by Tandy and the closest tool would be P368. Also, Stan says that F120** is really important to this class so if at all possible try to have that one. We may have loaner tools as well.

After lunch break, Jackie will be offering optional **instruction in painting the flower carving** you did in the morning. There will be a \$5.00 charge to cover the cost of paints and materials if you wish to attend. The only thing you need to bring for this class is a #4 Filbert brush and/or a #4 round brush. Please note: Don't panic, the morning class is still free.

Woody and I will be attending the **Custer Spring show at the Fairgrounds** this weekend so depending on who wins the coin toss; only one of us may be able to attend part if any of the class. If we miss you, come see



us at the show. We are in booth 219.

Because we have a number of students and we occasionally mix up borrowed tools, please mark your own tools so you can recognize them. Several dabs of your favorite color of fingernail polish should suffice.

Dull knives will be sharpened after class and any additional questions you have will be answered.

Don't forget, we still have openings for **Chan Geer's wallet class on June 13 – 15**. Also, we now have **Bob Beard's Jeweled Scarab class** scheduled for the first weekend in August (2 - 3) so plan accordingly. If you need more info on either class, let me know and I will send it asap.

NOTE TO PARENTS: Club and Store policy require a responsible adult attend these classes with any minor students. This is only common sense and protects all concerned.

Thanks,

Ken Bush
Spokane Valley,
WA

Stan's Inverted Carving Class

Last Saturday morning, Stan McConnell taught the group how to do inverted carving and in the afternoon, Jackie did the painting portion of the class. Lately we have been getting a full house at our 2nd Saturday classes at the Spokane Leather Factory. The young lady sitting at the end of the table next to Stan is Braedy Thomas who won the Ann Stolman award last year.

Ken Bush
Spokane Valley, WA

Jackie's Extra Coloring Class

Last week I had to bail out early from the



PSLAC East class at the Spokane Leather Factory because Woody and I were in the Custer Spring Arts and Crafts show at the Fairgrounds. To make up for it, Jackie invited Stan and I to come out to her house and do another painting class on the inverted flower carving. This time we both got to finish. Attached is the result.



Ken Bush
Spokane Valley, WA

4-H Leather Demonstration in Rathdrum, Idaho

These are pix of the 4H presentation we did in Rathdrum for the CDA 4H a week after the Sandpoint class. We got a counter top manufacturer (Mario & Son in the Spokane Valley) to donate the stones for both the Sandpoint and Rathdrum classes. The stones were cutouts from sinks and each participant got to keep the stone they were using. We also got enough stones for our classes at the Spokane Leather Factory. Hats off to Mario and Son.



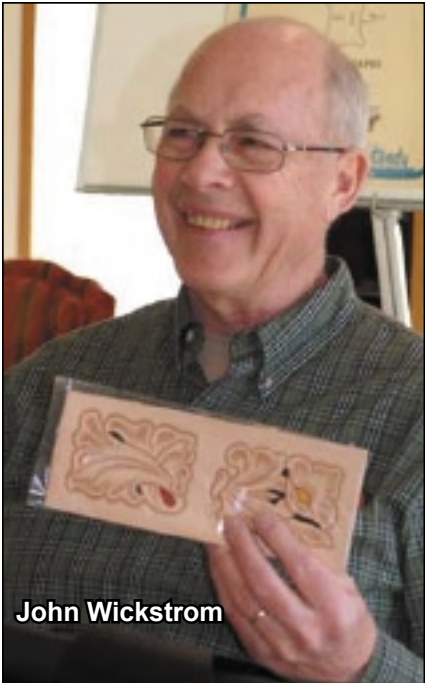
Ken Bush
Spokane Valley, WA

4-H Leather Demonstration in Sandpoint, Idaho

Mea Culpa. I forgot to send the pix of our Sandpoint Idaho class for the 4H leaders that was held on the 16th of February. I added the snow pictures from Woody's house so the West side folks could see what real snow was like. LOL.

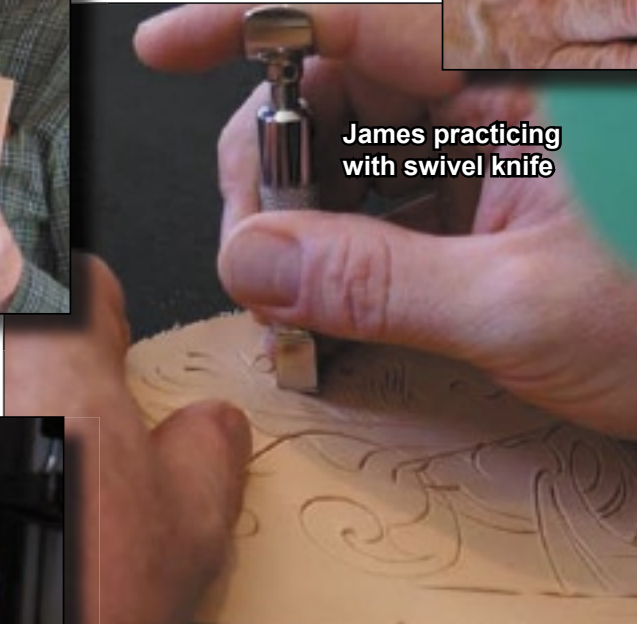


Ken Bush
Spokane Valley, WA



John Wickstrom

John Wickstrom's Back-to-Basics Wallet Workshop



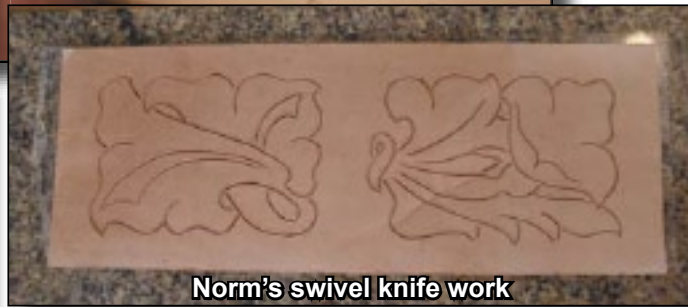
James practicing
with swivel knife



John's sample



Ken modeling edges



Norm's swivel knife work



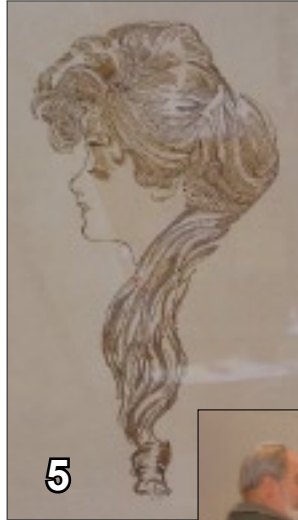
General's practice piece



Roger beveling

February Meeting Show & Tell

- (1) I can't remember the member who brought this but it is a old leather craving made in 1922
- (2) Just standing around before the demo that Dave gave before the meeting. (the gentleman with the hat brought the carving in the 1st picture)
- (3) It's been along time since Ken was at our meeting. He is looking good.
- (4) This is Ken Imus's Great Grand -Nephew He received Grand Champion at the Puyallup Fair.
- (5) Fred Nachbar did this leather burning while at the Apple Squeeze on Harstine Island this fall. He was with Dave Puls and Dave was the one who brought it into the meeting for Show N Tell.



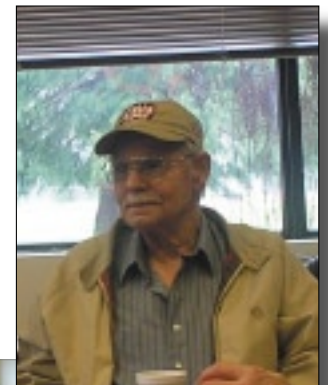
- (6) A Tandy kit coin purse Dusty put together and added the seed beads.
- (7) John Wickstorm made this leather greeting card wife Gladys finished the interior that made the card look professional
- (8) Ken Imus' belt.



- (9) Jeff just came back from a class where he made holster and holster belt. * ask Jeff about the class
- (10) Jeff's certificate from class.
- (11) Dusty's scissors case made just like the heart vase



February Meeting Show & Tell (cont.)



Dave Puls Presentation

Dave had a very informative presentation and presented it like a college lecture. He stated the facts and answered questions. We will try a new experiment to post Dave's presentation on the Internet for all to view. This will take some time to edit and compress on our web site.



Sewing Leather Patterns

I went to the Sewing and Stitchery Expo a few weeks ago at the Puyallup Fair Grounds. I ran across a business called Peacock Patterns. They have purse handles in a variety of colors and 2 sizes. I purchased both sizes.

I called the owner Tammy O'Connell up earlier this week to make sure it was ok with her if I copy a page off her website and put it in the RawHide Gazette. She stated that was OK with her. Tammy suggested when she is in town next time she would be willing and would like to do a class on sewing with washable leather suede. She has interesting items on her web site:

www.peacockpatterns.com

Barb Lourdes

Peacock Patterns

- Home
- Jitney Tote Bag
- Fish Purses
- Jitney Jypsy Bag
- Featured Notions
- Jitney Kits
- Surprise
- About Us
- Contact Us/Ordering
- Events
- Gallery
- Creative Machine Newsletter

What's a Jitney anyway? "Jitney" is an antique word from around 1908. A "jitney" was slang for a nickel which was the fare for a bus or car on a regular route. The bus or car became known as a "Jitney". Jump on the Jitney and travel from the past into today.

The Jitney Tote Bag
The "Jitney Tote Bag" was featured on HGTV's (Home and Garden Television) Sew Much More Show!

We want the Jitney Tote Bag to be YOUR tote bag of choice for YOUR regular route, whether it's to work, school or leisure.

- "It is the perfect size for a woman's frame.
- "It is engineered to be surprisingly lean in line, yet mysteriously roomy.
- "It can be carried comfortably on the shoulder, where you can easily control the bag and navigate gracefully through stores.

Designed to Fit YOU and YOUR Lifestyle today!

The Bill Churchill Children's Leather Program 7th Annual AWARD Nomination Form for the Year 2008

PSLAC Mission is...

- To further the enjoyment of leather and to help others learn more about the real joy of leather - working as a group and sharing ideas and knowledge of leather, its uses and how to use it. To pass on this knowledge to others and then have them pass it on to the new members who come later.
- Form a fellowship with peers, young and old, expert and non-expert, anyone who has the love of leather.
- To show and demonstrate to people outside the Co-Op leather in all forms and try to help them to become interested in leather...to share...time and talent, with all others in the Co-Op -- especially the young.

The **Bill Churchill Children's Leather Program Award** is designed to recognize PSLAC members who are caring on those principles of the PSLAC mission.

Nominations can be made by any PSLAC member and should be in writing. This form can be used, or any other written method is acceptable.

The nominations should give reasons and examples why they feel the nominee should receive an award.

- How have they helped further the craft?
- Are they active in PSLAC activities?
- Do they help promote leather craft by fair entries, demonstrations, etc.
- Have they helped generate interest in others to pursue the craft.
- Are they willing to share knowledge for the benefit of all.

The PSLAC directors will make the decision for each year and the award will be a once in a person's lifetime. The award will include a medal similar to the Stohlman award with a replica of Bill's hands and his axiom: C.O.P.I.

(confidence-observation-practice-imagination).

Send your **nominations by April 30th** to:

PSLAC
c/o Barb Lourdes
PO Box 1144
Auburn
WA, 98071, USA
...or... email to: stelmack@nwlink.com

Previous Recipients of the Bill Churchill Award:

Woody Collins (2002)
Bob Stelmack (2003)
Dusty Wert (2004)
Ken Imus (2005)
Paula Marquis (2006)
General Seymour (2006 Special Recognition Award)
Dave Jensen (2007)

RULES:

1. The award may only be won once in a lifetime.
2. The Directors will evaluate the nominations and decide on a winner – one each year.
3. If one of the Directors is nominated, that Director will be replaced by another PSLAC member for the purposes of selecting a winning nomination.
4. The award will be give out at the summer PSLAC Annual Bar-B-Que.
5. Nominations will be due by April 30th.

Upcoming Events

Western Washington (Seattle/Tacoma/Everett) PSLAC CURRENT SCHEDULE FOR 2008

- General Member's meetings are on the 2nd Sunday of each Month, unless specified below.
- Meetings held at Issaquah Valley Senior Center, 75 NE Creek Way, Issaquah. WA. 98027.
- February meetings are held at MacPherson's Leather, 519 12th St. S., Seattle WA.

Mini-Demos at the General Meeting.

April - Silversmithing and leather with Robb Gray.

May 4th - Using various meander tools and their effects with Paula Marquis.

June - **BBQ, Garage Sale and Bill Churchill Award and Picnic.**

July and August - **No meetings. Summer Break.**

September - Open for ideas.

October - Open for ideas.

November - Open for ideas.

December - Open for ideas.

All-Day Workshops.

March 29th - Air Brushing the Boxer dog with General Seymour at General's home, Orting - 17915 212th Ave., E., Orting. WA. 98360-9246 and will commence at 9.00a.m. .

April 26th - Back to basics, doing the wallet insides with John Wickstrom at General's home, Orting - 17915 212th Ave., E., Orting. WA. 98360-9246 and will commence at 9.00a.m.

May 31st - Carving picture of the Tandy Catalogue Cover without Elk with Paula Marquis at General's home, Orting - 17915 212th Ave., E., Orting. WA. 6759 and will commence at 9.00a.m.

June 7th - Colouring the Catalogue Cover Picture with Jackie Holliday at General's home, Orting - 17915 212th Ave., E., Orting. WA. 98360-9246 and will commence at 9.00a.m.

June 28th - Making Bag and Case handles with Paula Marquis at Len's home.

July 26th - Braiding Dog Leash - 6 strands with core with Paula Marquis at Len's home.

August 30th - Box making workshop with Peter Main (may be a 2 day workshop) at General's home, Orting - 17915 212th Ave., E., Orting. WA. 98360-9246 and will commence at 9.00a.m.

September 27th - Pacific Northwest Native Designs with Bob Stelmack at General's home, Orting - 17915 212th Ave., E., Orting. WA. 98360-9246 and will commence at 9.00a.m.

Bob Beard will be here for a 2-day workshop sometime in the Summer. Details to be confirmed. -----

Breakfast informal get-together locations:

North breakfast >>> Last Friday of the month at 10:00 AM at: Crossroads Restaurant, 1904 201st Pl. S.E., Bothel. WA.

South breakfast >>> The 3rd Saturday of the month at 8:30 AM at: Roberts 99 9825 Pacific Ave S Down the road from Tandy's

Upcoming Events (cont.)

Eastern Washington (Tri-Cities or Spokane) CURRENT SCHEDULE FOR 2008.

Tri-Cities Desert Leathercraft Group (DLG) Member's meetings are on the 3rd Saturday of each Month, unless specified below.

- Informal meetings held at 2532 Banyon St., Richland, WA 99352 (call Bob at 509-392-2589 for directions). Google map reference: +46° 16' 19.20", -119° 18' 32.40"

Mini-Demos at the General Meeting.

March – Belts, Leather Dying/Finishing, Homemade Tools

April - Open for ideas.

May - Open for ideas.

June, July and August - No meetings. Summer Break.

September - Open for ideas.

Workshops.

April (TBD) - Realistic Floral Carving and Coloring with Bob Stelmack at 2532 Banyon St., Richland, WA 99352 (call Bob at 509-392-2589 for directions) and will commence at 10:00am.

Spokane PSLAC East Member's meetings are on the 2nd Saturday of each Month, unless specified below.

- Informal meetings are held at: the Spokane Tandy 28 West Boone Ave., Spokane. WA 99201.

Mini-Demos at the General Meeting.

April - Open for ideas.

May - Open for ideas.

June - Open for ideas.

Workshops.

June 13–15 (Friday/Saturday/Sunday) 2008 -- Chan Geer's Sheridan Style Wallet Patterns

Date: Jun 13 – 15 2008 (Friday/Saturday/Sunday)

Time: 9 AM to 5 PM Friday and Saturday, 10 AM to 2 PM Sunday

Location: Lions Club in Rathdrum, Idaho.

Cost: \$175 instructor's fee plus \$15 hall rent. A \$90 non refundable deposit is required to reserve your spot.

If the class is cancelled for any reason, your money will be refunded.

Contact: **Ken Bush**, White Rose Leather, 11923 E. Fairview Ave., Spokane Valley, WA 99206 , phone 509.926.2087, E-mail whiterosex@aol.com

August 2-3 (Saturday/Sunday) 2008 -- Bob Beard's Jeweled Scarab Class. This day and a half class focuses on the setting of a gemstone into leather. Our subject will be an embossed **Scarab Beetle**. This pattern and stone setting technique can be used on a variety of future projects. All skill levels in leather craft are welcome. This project is designed for a beginner as well as the master crafts person.

Date: Tentatively scheduled for Aug 2-3 (Saturday/Sunday) 2008.

Time: 10 AM to 5 PM Saturday, 10 AM to 2 PM Sunday

Location: Lions Club in Rathdrum, Idaho.

Contact: **Ken Bush**, White Rose Leather, 11923 E. Fairview Ave., Spokane Valley, WA 99206 , phone 509.926.2087, E-mail whiterosex@aol.com

PSLAC Members Only Advertisement Page

Any PSLAC Member can advertise leather related products or services, subject to approval. Just send your text, picture and/or logo to stelmack@nwlink.com



MARQUIS UNIQUE LEATHER ARTISTRY, LLC

I make almost anything that can be made from leather and can be sewn by hand. A lot of my works are 'bespoke items', meaning, one of, individual custom requests, ranging anywhere from books and folders to rifle scabbards, holsters and golf bags, fully carved and stamped, and any and all articles in between, which also includes moulded bowls and pictures.

Phone: (206)-523-6295

Email: marquispg@aol.com

www.marquisuniqueleather.com



Black Horse Leatherworks & Saddlery specializes in high quality & unique custom western tack and apparel. We make some English items such as Schooling chaps & Stall items. We make all our leather items one at a time, by hand per our clients specifications. All items are custom fit with an endless array of options to choose from. Each is a small piece of "working art". We make all our items here in our own shop - nothing is sent out. This helps us maintain our high standard of quality that our customers have come to expect from us. Custom silver items are available for your tack and apparel needs in addition to our lines of fine silver shown in the website. We also offer Garcia bits & spurs and bits & spurs from Sleister.

C.E. Gessell, Owner

Our Motto: If you can imagine it... we can create it!

Leather Big Book Covers
www.leatherbigbookcovers.com
by **Bob Stelmack**



DIAMOND P LEATHER SHOP PHIL O'NEILL

Saddlery: New, Used-Repair
Custom Made Leather Goods
25051 - 180 Ave SE, Kent WA 98042
Hours By Appointment Or By Chance
(252) 631-9770

This Is A One-Man Outfit
All Custom & Repairs Are Crafted By Myself
Email: bjoneill@worldnet.att.net

Custom Maker Stamps Grey Ghost Graphics By Jeff Mosby

Custom maker stamps, laser cut acrylic templates and custom tapoffs for the leather craft field. Custom cut from your artwork at reasonable rates!

P.O. Box 30268, Myrtle Beach, SC 29588
(866) 205-9810 or (843) 903-4788

www.greyghostgraphics.com



Norm Lynds Toolmaker

Mallets, Modelers, embossing tools,
lifters and others on request

Phone: (425) 357-1001

E-mail: sagerat2003@yahoo.com

Leather Company Advertisement Page



Toll Free:
(800) 541-3264
**Bee Natural
Leather-
care**
*The ultimate in
leather care prod-
ucts*

P.O. Box 820803, Vancouver, WA. 98682-0018
(360) 891-7178, FAX: (360) 891-7166
Email: bnatura@pacifier.com

SPOTLIGHT on PRO-CARV — Working and Tooling Leather Formulation

DIRECTIONS:

Dilute concentrate with water: 1 part PRO-CARV to 10 parts water is recommended for carving and tooling. When immersing the leather for shaping or forming, add 8 oz. PRO-CARV to 3 gallons of water.

NO CASING IS NECESSARY

Leather can be immersed or sponged with this solution. PRO-CARV eliminates the need to case leather. PRO-CARV allows you to begin working with the leather after immersing for 3-5 minutes because of the very rapid penetration into even the thickest hide. Allow the surface to dry somewhat before beginning forming or carving.

Contact MacPherson's, Hide Crafters, Goliger's Leather, and The Leather Factory for any of the fine Bee Natural Leather products.

Advertisement

RawHide Gazette
Editor / Publisher: Bob Stelmack
Co-Founders: Bill Churchill & General Seymour
Treasurer/Secretary: Barbara Lourdes

The RawHide Gazette is published monthly (12 times a year). Address for information and correspondence: PSLAC, c/o Barbara Lourdes, PO Box 1144, Auburn, WA, 98071, USA, Email: billing@pslac.org

The RawHide Gazette is provided to the Puget Sound Leather Artisans Co-Op as a part of their membership benefits. Annual dues are \$24.00 USD per year.

All submissions are subject to editing for clarity and length. All articles submitted must be accompanied by name, address and permission of writer.

Advertising Rates

The RawHide Gazette now offers advertising space to interested parties. Ad spaces are as follows:

1/4 Page or Business Card \$60 USD
1/2 Page \$110 USD
1 Full Page \$200 USD

These rates cover a six month time period. PSLAC members are entitled to a 25% discount. Leather companies supporting PSLAC are given free Business Card size advertisement, additional space at regular rates.

The Puget Sound Leather Artisans Co-Op can be found at:

<http://pslac.org>

Support our sponsor and take advantage of the PSLAC Membership Discounts...



Toll Free Order Lines:
1-(888) 263-5277
Fax: 1-(888) 263-5086

Hide Crafter Leathercraft

Offering wholesale discount to PSLAC members
ON-LINE CATALOG www.hidecrafter.com

7936 Camp Bowie West
Ft. Worth, TX 76116

George Hurst, Manager
email: hcrafter@flash.net

Steve Derricott



Twister D Products
301 E. Bower St.
Meridian, Idaho 83742
(208) 884-3766 - Fax (208) 884-3767
A Division of Gfeller Casemakers, Inc.

www.lacemaster.com

Offering a 10% discount to the PSLAC members

Outside Washington
1-800-343-9949

(206) 328-0855
Fax: 328-0859

MACPHERSON

Leather Company

Leather, Shoe Finding and Saddlery

Offering a 30-40% off retail discount to the PSLAC members

519 - 12th Avenue S.
Seattle, Washington 98144

GLOBAL LEATHERS



Web site: www.globalleathers.com
Telephone : 212-244-5190
Fax : 212-594-7515
e-mail: globalleathers@usa.net
Paul Crystal

Offering a discount to PSLAC members

...more sponsors on the following page...



Dusty Johnson

PLEASANT VALLEY SADDLE SHOP
1220 S. County Rd. 21
Loveland, CO 80537
Phone: (970) 669-1588
Fax: (970) 669-1589
E-Mail: dusty@pvsaddleshop.com
URL: <http://www.pvsaddleshop.com>

Offering a 20% discount to the PSLAC members

BRETTUNS VILLAGE LEATHER

**Selling odd lots, miscellaneous overstocks,
bargain leathers and leathercraft
accessories, all from Maine, only online**
Sides, Full Hides, Buckles, Key Rings, Laces, Thread
Tools, Rivets, Scrap Pieces, Elk & Buffalo Scrap
Always Free Shipping in the 48 States

www.brettunsvillage.com

Leather Factory

Durham Hefta
Manager



Portland

Phone (503) 255-8818
Fax (503) 255-9011
Toll Free (888) 277-3360
www.leatherfactory.com

13221 N.E. Whitaker Way
Portland, OR 97230-1128

Offering a wholesale discount to the PSLAC members



Leather, Suede, Skins, Inc.



261 West 35th Street
11th Floor, New York, NY 10001
Tel: (212) 967-6616
Fax: (212) 564-5759
www.leathersuedeskins.com
Email: leather.suede.skins@att.net

Offering a 10% discount to the PSLAC members

Tandy Leather Boise

JoAnne Tackitt, Manager
285 N. Orchard St.
Boise, ID 83706



Toll Free:
1-800-930-2850
(ph. 208-375-5589. Fax. 208-375-7168)

<http://www.tandy-leather.com>

Offering a wholesale discount to the PSLAC members

The Leather Factory

Kermit P. Creek
Manager



Billings

Phone (406) 256-1355
Fax (406) 256-1360
Toll Free (888) 277-3323
www.leatherfactory.com

115 North 30th Street
Billings, MT 59101-2032

Offering a wholesale discount to the PSLAC members



TWL Leather, Inc.

Toll Free: 1-800-477-9923
2017A White Settlement Rd.
Fort Worth, TX 76107
(817) 877-5427, Fax (817) 877-5432

Offering a wholesale discount to the PSLAC members

Tandy Leather

Jim Linnell
Director of Operations



Toll Free:
1-888-890-1611

<http://www.tandy-leather.com>

Offering a wholesale discount to the PSLAC members



Leather Factory Spokane

28 West Boone Ave, Spokane, WA 99201
Phone: (509) 328-9939
Toll Free: 1-800-822-8437
Fax: (509) 326-7019

Offering a wholesale discount to the PSLAC members

www.leatherfactory.com



Taking I-90

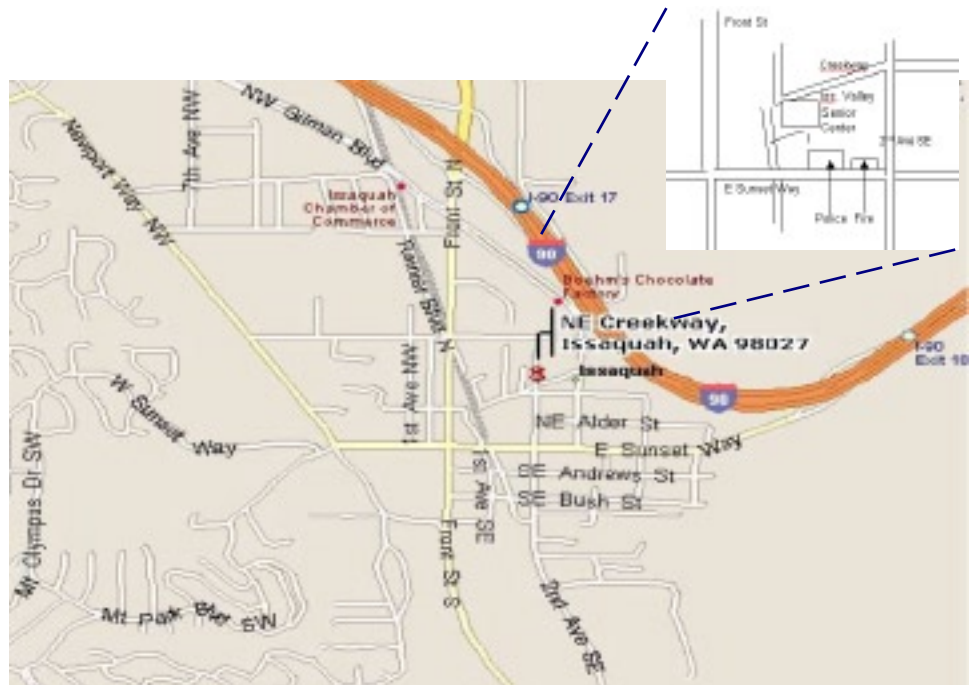
From Auburn: come north on Hwy167, or I-5, then I-405 north, then onto I-90, going east:

From Everett: South on I-5 to 405 South, or to I-90, going east:

From I-90 get off on exit 17/Front St., and bear right onto Front Street. At the third stoplight, turn left onto E Sunset Way, then see below:

Taking Hwy 18 from around Auburn to Issaquah

Get on Hwy 18 going East, from Auburn, it's about 12 miles to Maple Valley, then at about 2 ½ miles after Maple Valley, look for the turn off to Issaquah Hobart Rd SE, turn onto ramp 276th Ave SE and go 0.6 miles, bear left onto Issaquah Hobart Rd SE. It's about 8 ½ miles from there to Issaquah. Hobart becomes Front Street S, which takes you into downtown Issaquah. Turn right onto E Sunset Way, then see below:



After turning onto E Sunset Way:

go two blocks (past the Police and Fire Stations), turn left onto 2nd Ave SE, go past the old Senior Center building on your left, and a baseball field, then left onto NE Creekway, go almost to the railroad tracks. The new Issaquah Valley Senior Center is a brick building on your left, parking in front of it. There is also parking behind, from Sunset, turn left into the parking area, right before the Police Station (look for a large parking sign on your left), and follow it till you see a kids play ground.

Address: 75 NE Creekway, Issaquah, WA 98027

**PSLAC
c/o Barbara Lourdes
PO Box 1144
Auburn, WA 98071
USA**

