

Raw Hide Gazette

Copyright © 2008 by PSLAC, All Rights Reserved

"Without question, the Raw Hide Gazette is by far the best and most informative and comprehensive Guild publications of all of them! You are to be commended for your very fine and professional efforts. Keep up the good work. With admiration"
/signed/
Al & Ann Stohlman, December 1997

Hide Highlights

- Page
- 1 New Oregon Leather Guild
 - 2 What Do I Charge for it?
 - 2 Special Retirement Gift
 - 3 Desert Leathercraft Group (DLG)
 - 4 PSLAC East
 - 5 Carla Irving's Leather Dye Demo
 - 6 Mad Rush to Purchase Lester's Old Stamping Tools
 - 7 PSLAC South Breakfast—New Location
 - 7 General's Boxer Air Brush Class
 - 7 March PSLAC West Meeting
 - 8 Silversmithing and Leather with Robb Gray
 - 8 Robb Gray's Demo Before the April Meeting
 - 9 Workshop Co-ordinator's Report
 - 11 Upcoming Events
 - 12 Upcoming Events (cont.)



New Oregon Leather Guild

The first meeting went great. Everyone that showed up yesterday is open to learning and teaching. There was a Harness and Wagon Auction in Sisters, Oregon this weekend so we had a few that will be at next month's meeting that did not make it this time. I am excited about it.

We have people that have stuff to donate for the start of a Library for our guild. Our next meeting will be at **Oregon Leather** again located at **810 Conger St., Eugene, OR on May 24th at 11:00 AM**. We are going to have a show and tell and introduction. So, if you have made or done something or not, we encourage everyone to come and see what people have done. Then get those seasoned pros to come show us how to get better and learn new things.

Also, we are collecting names for our guild we will pick the top 3 out of what we get

and vote on a name. By are third meeting we should have a name.

Peter Main was a popular person and I am sure if we can talk him into being a future guest teacher. This is exciting, to say the least, we have a couple people in the group that have taken a class from Peter before as well as **Robb Barr, Bill Gomer**, to name a few. I look forward to the next meeting and I have to say a really big thank you, to you Bob, for all your help in helping me get this started and to **Ruth** also for all her help from **ILG**.

In the picture above, starting from the left, we have **James M Hopper, Scott Wilber, Kathy Florence, Jennifer Keeler, Lynne Grubbs along with mom Terri and dad Ralph Grubbs, Gary K Knutson Joyce Beaver, Gareth Thomas**. Again thank you so much for all your help Bob. It is and has been a pleasure and much appreciated.

Gary Knutson

One Week Early to not conflict with Mother's Day

Meeting Announcement

NEXT MEETING

Sunday, May 4th,
Doors open at noon for:

Using various meander tools and their effects with Paula Marquis

followed by the meeting at 2:00 pm

What Do I Charge for it?

As one who has made about all the mistakes you can make and still be floating, here's how I do it now. Some of this I got from a small business advisor, quite a bit of the principles as they apply to leather from **Bob Brenner's** book "**How to Establish Prices for the Saddle Maker or Leather Worker**", some from talking to other guys, and a lot from keeping books and tweaking my formulas. It seems unwieldy at first, until I realized how much I was losing by not accounting for it both in materials and labor. I used to do this all by hand, but have since made up spreadsheet templates in my computer that do the calculations. I use these formulas for pricing all my personal and custom items.

Breaking it into materials first:

For each piece of leather used in a project - width times length in inches, then add in a 25% cutting waste factor. If it goes into the scrap bin, I am still not getting paid for it on this, so it is waste. Divide this by 144 to get a square foot measurement.

Multiply the square footage by the cost per square foot with shipping figured in. I use the highest price I paid in the last year to figure this. I add in special hardware like zipper tape and slides here too. This gives me a materials cost sort of. To allow for things like oil, dye, finish, thread, rivets, etc. I add 20% to the total leather costs for a project. It has been borne out to be about that (maybe a little less on some things) from past years records. This gives me what my costs really are, I then double it.

Labor:

I kept time sheets on a lot of steps. I did

enough wholesale and award stuff, I got my time rates down to be pretty consistent. Everybody's will vary. Do a few, keep track of actual time, and average it. These are based on measurements of the final project.

Cutting time - I struggle with this, but for the sake of calculations I made it a flat 15 minutes. That pretty well accounts for getting out the cutting pattern, unrolling the leather, cutting, and putting the leather away. Obviously you are going to make it on a checkbook, and go over on a briefcase with pockets. The 15 minute average is—average. I add 5 minutes to tape backs and case for small things, 10 minutes for larger. I will cut these and apply my casing solution, then bag them overnight and stamp early the next morning. The 5 or 10 minutes accounts for taping the backs and applying the case. I don't mean to imply I case for 5 or 10 minutes.

Stamping - I can medium basket stamp with a simple border about 40 minutes per sq. ft. Larger baskets and geometric stamps are a little faster, but I still use that same 40 minutes per sq. ft. Special stamping like simple floral or oak corners are 15 minutes each. Again, an average. Other stamping by guesstimates.

Assembling - gluing in linings, trimming linings, gluing pockets, - 7 minutes /sq. ft. Sewing - hand sewing - 6spi - 1 in/minute plus 5 minutes for threading needles, polishing awls etc. Machine sewing - 10 inches per minute with a minimum of 10 minutes to account for machine oiling/cleaning/maintenance/changing feet and plates.

Zipper - It really doesn't seem to matter much whether it is a planner or a rope bag, it takes me about an hour to make up a zipper from scratch, sew it to a gusset, and fit it. I just add 60 minutes.

Edging and finishing - Averaged out, it takes me about 15 minutes/sq ft. to oil, run an edger, slick an edge, apply finish, etc. Background dye, special treatments, etc. all add in plus too.

Installing hardware - buckles, conchos, Chicago screws. Depends on how many, but 5 minutes at least to punch the holes and screw a couple down, guesstimate past there depending on how many.

I add up the minutes and multiply it by my "shop rate" to arrive at the labor cost. Shop rate is a factor of labor and fixed overhead expenses averaged out over the work time. Add materials and labor to get a price. These numbers are all based on a "one-of" item. Obviously there is economy of labor by doing several at a time, and I try to do that when I can. My labor time rates are not the same as probably anyone else's. Every so often I will hit the kitchen timer, and then not look at it again until I am done with that step to check times.

That's how I do it.



Bruce Johnson

Special Retirement Gift

A number of years ago, when I was working for **Aetna Life and Casualty** in Spokane, we had a manager who was retiring after thirty five years with the company. We wanted to have a card that everyone could sign but there were approximately 100+ people who worked in the office.

So I came up with a idea to take a large piece of leather. I cased it and then had each person sign it through tracing film. Then I used high lighter on the entire piece so that all the names showed up. In the center we had a gold plaque to commemorate the event. I added a stamped border and one of the men made a large plaque to mount it.

It was treasured by our manager.

Sister Rachel Kieffer



Desert Leathercraft Group (DLG)



Ivan's Dad's handmade belt buckle



Ivan's latest leather "Family" sign



One of Ivan's fancy belts that the Cow Girls seem to like



▼ Here are some projects from Dave Richards. The knife sheath is Feibings Pro-Oil Saddle Tan and Mahogany stain on 9/10 oz. leather. The cuffs are Feibings Pro-Oil Saddle Tan on 6/7 oz. leather.





▲ Another project from Dave Richards. The Holster and Gun Belt is Feibings Pro-Oil Dark Mahogany stain on 8/9 oz. leather lined with 6/7 oz. leather.



PSLAC East

Thought I'd drop a line and send in some photos of things done and in progress. The **Deer/Bear** is one that **Jackie** had completed a couple of weeks ago. She is sure excited about coming over in June for the painting session with the group. She is carving and doing her practice piece in preparation.

Chan Geer showed me how to Basket Weave in a circle and I had mentioned it would look good on a canteen. Well a year later I finally did my first canteen, there are things I would change, but the Basket Weave I'd stay with. I've enclosed a photo of a Checkbook cover I did for a demo as well as one in progress and

a small binder I'm currently doing. I heard from Ken Bush the other day and looks like we have 11 people signed up for the upcoming Chan Geer class in June.

I'm also looking forward to the **PSLAC Bar-B-Que and tool sale** in June. See you there.

Woody Collins





Carla Irving's Leather Dye Demo

Carla Irving, of Irving's Leather in Waitsburg, WA, gave us a demonstration of different dyes and finishes most often used to finish a carved piece of vegetable tanned leather. She had a variety of new and old Tandy and Fiebing's products.

Each product imparted a different look to the leather. The antiques looked the best to highlight the carving and stamping details. In fact, Tandy Leather Factory sent her "off cut" from their embossed belts to test and demonstrate the dyes and finishes.



John Hall brought his samples from a recent basic leather carving class and showed his "resist" technique using Tandy's Super Sheen. Carla recommended the use of Tandy's Neatlac for a more effective "resist" or "blockage" of the overall dye, shown here with the petals of the western flower.

Ivan Sampson showed how he uses a 50/50 mixture of Fiebing's Antique Finish Paste and Fiebing's Neutral Resolene. The mixture is used to create deep colors

for the embossed designs. The mixture is applied liberally and a tee shirt wrapped over a wooden block is used to remove the excess leaving the antique paste mixture in the cuts. After drying, the leather is finished with a coat of Fiebing's Neutral Resolene.

The group was given the opportunity to test or try any of the products Carla brought.

Bob Stelmack
Richland, WA





Mad Rush to Purchase Lester's Old Stamping Tools

Lester made available many of his stamping tools. Old Crafttools without letter prefix and some that he made himself.

Files that Lester used to make his stamping tools



Purse that Lester tooled with his homemade stamping tools.



PSLAC South Breakfast— New Location

This is our new Breakfast Restaurant and the room we will be using is the one with the windows in front. The 3rd Saturday of the month at 8:30 AM at: Oscar's Restaurant, 8726 S. Hosmer St., Tacoma, WA, phone: (253) 548 2419

This is Cassandra. She has been waiting on this group from the days when Bill came down to Tacoma to have breakfast with Larry, Fred and others.

This is General and Ann's dog. I call it a mouse or chipmunk. *(If he is raising it for the hide I don't think they would be able to make a coin purse. Sorry General.)*

Dusty Wert



March PSLAC West Meeting

This is **Mike Foley**. He has been a member for awhile, but I think this is his first meeting. It was good to see a new face at the meeting.

Dusty Wert

General's Boxer Air Brush Class

Ken Eriksen



Paula Marquis



John Wickstrom



Silversmithing and Leather with Robb Gray

Robb gave a very informative demo. Robb has a job where he has to wear a suit and tie. He came to the meeting from work. We are not used to seeing anybody at the meeting in a suit and tie. He looked very nice.

Dusty Wert

Robb Gray's Demo Before the April Meeting

Robb Gray's primary interest is **Silversmithing** and **Native American jewelry**. He joined PSLAC a couple or so years ago to learn how to combine his silversmithing with leather articles.

Lately he's been making some VERY NICE knife sheaths.

His demonstration for the meeting was going to be on basic silversmithing, and showing where and how it can be combined with leather.

Robb had quite a few samples of coral stones (already shaped and stuck to a card) and turquoise stones (already shaped and stuck to a card) which can be purchased from different suppliers and from jewelry trade shows where he purchased these samples. He also brought along rolls of silver, very thin and about 1/4" wide and demonstrated how these are rolled to the shape of the stone that needs to be set in a bezel and how with the right amount of heat to make the silver just soft enough to work an edge over the stone.

He also talked about various types of bottoms that can be put on the bezels depending on how they are to be attached to the leather. He explained how these set stones can be attached to the top of a snap for great enhancement of the product, as on a knife sheath.

At that point of the demonstration Robb showed some of the knife sheaths he had made for the knives he had also made. He said he was still new at the knife making business. It was pretty obvious to all of us that there was nothing amateurish about his abilities as a knife maker. It didn't take long for us all to drift into knife making and Robb explained how he made them, what sort of materials he used for the handles and that he's recently taken a silver engraving



◀ Robb Gray



◀ Robb learned how to make sheaths and how to put coral and silver attached to a snap.



Coral and turquoise stones stuck on a card ▶



◀ This is not a clear picture, but this case has Ivory attached to it.



Robb showing 2 different styles of knives he makes with different handles and shapes of blades. ▶



◀ He starts with a blank. This will be a shiny sharp knife blade and then he puts a handle made of wood, horn, or ivory



course and showed us samples of his 'practice pieces', they were REALLY good.

At the end of the two hour session Robb had to do a very careful count of his knives, but, he did get them all back.

THANK YOU Robb, it was an excellent pre-meeting demo.

Paula Marquis

Workshop Co-ordinator's Report

Robb Gray did a great demo at the April meeting and brought in some beautiful knives he'd made.

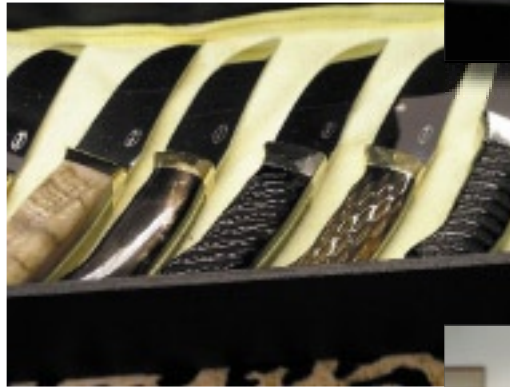
At the end of **April, the 26th (Saturday)**, we will complete the **wallet insides** to match the wallet back we did in February with **John Wickstrom**. John's workshop will be at General's home. His address is: 17915 212th Ave S.E., Orting, WA, 98360, phone (360) 893 6759 in case you get lost. The workshop will commence at 9:00a.m. Here is John's list of supplies we will need to make the wallet insides.

- Approx. 1sq.ft. of thin leather for wallet insides - 1/2oz. John suggests, kid, split, pig, etc.
- Straight edge (about 12")
- Cutting knife
- Cutting Surface
- Dividers and edger
- Punches for lacing and rotary hole punch
- Lacing, or stitching tools, thread, etc. for those who wish to hand stitch their wallet.
- Contact cement
- Bar snaps and setters
- (1) Spring bar and inserts (2)
- Marking pen for tracing pattern on leather (dark or white gel pen)



◀ Showing different woods for knife handles. The box on the left has the different woods for the handles.

Robb's pictures of knives. Ivory and horn make beautiful handles. ▶



◀ Robb's knives some horn handles and some Ivory all of them are beautiful. They are truly beautiful knives and the blade is like a mirror.

Now we come to the leather part of his demo. Robb couldn't find anyone to make a sheath that he liked so he is making them himself. One of Robb's sheaths with the floral design. ▶



◀ Robb answered a lot of questions.



▶ The group really seemed to enjoy this demo and ▶ Roger took the videos



- Bring heavy paper if you want to copy the pattern to keep.
- 3/4" slot punch; 7/8" slot punch.

At the May meeting **Paula** will be showing us **how to use the various meander and serpentine tools** and the different effects that can be obtained. If you wish to do some hands on, bring a couple of pieces of carving leather approx. 1sq ft each, stamping stone, mallet, water and sponge, and of course all your meander and serpentine tools as well as swivel knife, wing dividers, tracing stylus and ruler.

For all those who are contemplating doing the all day workshop in May with **Paula** at General's home (address above), that is carving the picture from the **Tandy Catalogue Cover** by **Jim Linnell** without the Elk, should already have their patterns that General distributed for Paula at the March meeting. Paula re-drew the tracing pattern and took the Elk out of the picture and replaced it with scenery. Paula will bring some spare tracing patterns to the May meeting if somebody needs one. Paula would also like everybody who is coming to have the tracing pattern already drawn on tracing film before the day of the workshop to save some time as this picture will take a lot of time.

Jackie has been working hard to make sure we have a good colouring workshop in June with this scenery.

A couple of people have said that they would prefer the scenery with the Elk included. The reason Paula and Jackie took the Elk out was to facilitate the painting of a scenery, this being the primary purpose of the workshop. It is suggested that the Elk can be done separately using **Peter Main's** embossing methods (with plugs) to then be set in and attached to the picture afterwards to give the scenery more depth. Also, any other animal could be substituted, like a bear, cougar, etc. An opportunity to let our imagination go wild.

If you have any questions, or want to be signed up for any workshops, give me a call - (425) 438 1709.

See you all at the next meeting.

Len Madison
Workshop Co-Ordinator.



◀ **Ken Eriksen** has a new member of the family. Here is a picture of **Zack** and Zack's new collar.

PSLAC West Meeting Show & Tell

▶ Barb got a bunch of garment leather from her sister. Barb made this nice handy coin purse from the leather.



◀ "Barb's treasurers" Barb found three Classic Patterns books on eBay and she is happy about her find. She paid \$12.00 each.

▼ This is a project that Paula is doing. It is one of 8 chair backs.



Upcoming Events

Western Washington (Seattle/Tacoma/Everett) PSLAC CURRENT SCHEDULE FOR 2008

- General Member's meetings are on the 2nd Sunday of each Month, unless specified below.
- Meetings held at Issaquah Valley Senior Center, 75 NE Creek Way, Issaquah. WA. 98027.
- February meetings are held at MacPherson's Leather, 519 12th St. S., Seattle WA.

Mini-Demos (Start at Noon) followed by the General Meeting (Starts at 2PM).

ONE WEEK EARLY --- May 4th - Using various meander tools and their effects with Paula Marquis.

June - BBQ, Garage Sale and Bill Churchill Award and Picnic.

July and August - No meetings. Summer Break.

September - Open for ideas.

October - Open for ideas.

November - Open for ideas.

December - Open for ideas.

All-Day Workshops.

May 31st - Carving picture of the Tandy Catalogue Cover without Elk with Paula Marquis at General's home, Orting - 17915 212th Ave., E., Orting. WA. 98360-9246 and will commence at 9.00a.m.

June 7th - Colouring the Catalogue Cover Picture with Jackie Holliday at General's home, Orting - 17915 212th Ave., E., Orting. WA. 98360-9246 and will commence at 9.00a.m.

June 28th - Making Bag and Case handles with Paula Marquis at Len's home.

July 26th - Braiding Dog Leash - 6 strands with core with Paula Marquis at Len's home.

August 5th & 6th (Tuesday & Wednesday) - Jewelled Scarab Beetle with Bob Beard to be held at Len's home at 4908 Harbor Lane, Everett, WA 98203

August 30th - Box making workshop with Peter Main (may be a 2 day workshop) at General's home, Orting - 17915 212th Ave., E., Orting. WA. 98360-9246 and will commence at 9.00a.m.

September 27th - Pacific Northwest Native Designs with Bob Stelmack at General's home, Orting - 17915 212th Ave., E., Orting. WA. 98360-9246 and will commence at 9.00a.m.

October, November & December - There will be no workshops as everybody is business with Christmas orders.

Breakfast informal get-together locations:

North breakfast >>> Last Friday of the month at 10:00 AM at: Crossroads Restaurant, 1904 201st Pl. S.E., Bothel. WA.

NEW LOCATION South breakfast >>> The 3rd Saturday of the month at 8:30 AM at: Oscar's Restaurant, 8726 S. Hosmer St., Tacoma, WA, phone: (253) 548 2419

Upcoming Events (cont.)

Eastern Washington (Tri-Cities or Spokane) CURRENT SCHEDULE FOR 2008.

Tri-Cities Desert Leathercraft Group (DLG) Member's meetings are on the 3rd Saturday of each Month, unless specified below.

- Informal meetings held at 2532 Banyon St., Richland, WA 99352 (call Bob at 509-392-2589 for directions). Google map reference: +46° 16' 19.20", -119° 18' 32.40"

Mini-Demos at the General Meeting.

May - (Moved to 4th Saturday, May 31st) Leather Slip-on Covers by Bob Stelmack

June, July and August - **No meetings--Summer Break.**

September - Open for ideas.

Workshops.

June (TBD) - Realistic Floral Carving and Coloring with Bob Stelmack at 2532 Banyon St., Richland, WA 99352 (call Bob at 509-392-2589 for directions) and will commence at 10:00am.

July (TBD) - Making a Leather Album with Bob Stelmack at 2532 Banyon St., Richland, WA 99352 (call Bob at 509-392-2589 for directions) and will commence at 10:00am.

August (TBD) - Leather Bookbinding with Bob Stelmack at 2532 Banyon St., Richland, WA 99352 (call Bob at 509-392-2589 for directions) and will commence at 10:00am.

Spokane PSLAC East Member's meetings are on the 2nd Saturday of each Month, unless specified below.

- Informal meetings are held at: the Spokane Tandy Leather Factory Store, 28 West Boone Ave., Spokane. WA 99201.

Mini-Demos at the General Meeting.

May - Open for ideas

June - Open for ideas

Workshops.

June 13-15 (Friday/Saturday/Sunday) 2008 -- Chan Geer's Sheridan Style Wallet Patterns

Date: Jun 13 - 15 2008 (Friday/Saturday/Sunday)

Time: 9 AM to 5 PM Friday and Saturday, 10 AM to 2 PM Sunday

Location: Lions Club in Rathdrum, Idaho.

Cost: \$175 instructor's fee plus \$15 hall rent. A \$90 non refundable deposit is required to reserve your spot. If the class is cancelled for any reason, your money will be refunded.

Contact: **Ken Bush**, White Rose Leather, 11923 E. Fairview Ave., Spokane Valley, WA 99206 , phone 509.926.2087, E-mail whiterosex@aol.com

August 2-3 (Saturday/Sunday) 2008 -- Bob Beard's Jeweled Scarab Class. This day and a half class focuses on the setting of a gemstone into leather. Our subject will be an embossed **Scarab Beetle**. This pattern and stone setting technique can be used on a variety of future projects. All skill levels in leather craft are welcome. This project is designed for a beginner as well as the master crafts person.

Date: Tentatively scheduled for Aug 2-3 (Saturday/Sunday) 2008.

Time: 10 AM to 5 PM Saturday, 10 AM to 2 PM Sunday

Location: Lions Club in Rathdrum, Idaho.

Contact: **Ken Bush**, White Rose Leather, 11923 E. Fairview Ave., Spokane Valley, WA 99206 , phone 509.926.2087, E-mail whiterosex@aol.com

PSLAC Members Only Advertisement Page

Any PSLAC Member can advertise leather related products or services, subject to approval. Just send your text, picture and/or logo to stelmack@nwlink.com



MARQUIS UNIQUE LEATHER ARTISTRY, LLC

I make almost anything that can be made from leather and can be sewn by hand. A lot of my works are 'bespoke items', meaning, one of, individual custom requests, ranging anywhere from books and folders to rifle scabbards, holsters and golf bags, fully carved and stamped, and any and all articles in between, which also includes moulded bowls and pictures.

Phone: (206)-523-6295

Email: marquispg@aol.com

www.marquisuniqueleather.com



Black Horse Leatherworks & Saddlery specializes in high quality & unique custom western tack and apparel. We make some English items such as Schooling chaps & Stall items. We make all our leather items one at a time, by hand per our clients specifications. All items are custom fit with an endless array of options to choose from. Each is a small piece of "working art". We make all our items here in our own shop - nothing is sent out. This helps us maintain our high standard of quality that our customers have come to expect from us. Custom silver items are available for your tack and apparel needs in addition to our lines of fine silver shown in the website. We also offer Garcia bits & spurs and bits & spurs from Sleister.

C.E. Gessell, Owner

Our Motto: If you can imagine it... we can create it!

Leather Big Book Covers
www.leatherbigbookcovers.com
by **Bob Stelmack**



DIAMOND P LEATHER SHOP PHIL O'NEILL

Saddlery: New, Used-Repair
Custom Made Leather Goods
25051 - 180 Ave SE, Kent WA 98042
Hours By Appointment Or By Chance
(252) 631-9770

This Is A One-Man Outfit
All Custom & Repairs Are Crafted By Myself
Email: bjoneill@worldnet.att.net

Custom Maker Stamps Grey Ghost Graphics By Jeff Mosby

Custom maker stamps, laser cut acrylic templates and custom tapoffs for the leather craft field. Custom cut from your artwork at reasonable rates!

P.O. Box 30268, Myrtle Beach, SC 29588
(866) 205-9810 or (843) 903-4788

www.greyghostgraphics.com



Norm Lynds Toolmaker

Mallets, Modelers, embossing tools,
lifters and others on request

Phone: (425) 357-1001

E-mail: sagerat2003@yahoo.com

Leather Company Advertisement Page



Toll Free:
(800) 541-3264
**Bee Natural
Leather-
care**
*The ultimate in
leather care prod-
ucts*

P.O. Box 820803, Vancouver, WA. 98682-0018
(360) 891-7178, FAX: (360) 891-7166
Email: bnatura@pacifier.com

SPOTLIGHT on PRO-CARV — Working and Tooling Leather Formulation

DIRECTIONS:

Dilute concentrate with water: 1 part PRO-CARV to 10 parts water is recommended for carving and tooling. When immersing the leather for shaping or forming, add 8 oz. PRO-CARV to 3 gallons of water.

NO CASING IS NECESSARY

Leather can be immersed or sponged with this solution. PRO-CARV eliminates the need to case leather. PRO-CARV allows you to begin working with the leather after immersing for 3-5 minutes because of the very rapid penetration into even the thickest hide. Allow the surface to dry somewhat before beginning forming or carving.

**Contact MacPherson's, Hide Crafters, Goliger's
Leather, and The Leather Factory for any of the fine
Bee Natural Leather products.**

Advertisement

RawHide Gazette

Editor / Publisher: Bob Stelmack
Co-Founders: Bill Churchill & General
Seymour
Treasurer/Secretary: Barbara Lourdes

The RawHide Gazette is published monthly (12 times a year). Address for information and correspondence: PSLAC, c/o Barbara Lourdes, PO Box 1144, Auburn, WA, 98071, USA, Email: billing@pslac.org

The RawHide Gazette is provided to the Puget Sound Leather Artisans Co-Op as a part of their membership benefits. Annual dues are \$24.00 USD per year.

All submissions are subject to editing for clarity and length. All articles submitted must be accompanied by name, address and permission of writer.

Advertising Rates

The RawHide Gazette now offers advertising space to interested parties. Ad spaces are as follows:

1/4 Page or Business Card \$60 USD
1/2 Page \$110 USD
1 Full Page \$200 USD

These rates cover a six month time period. PSLAC members are entitled to a 25% discount. Leather companies supporting PSLAC are given free Business Card size advertisement, additional space at regular rates.

The Puget Sound Leather Artisans Co-Op can be found at:

<http://pslac.org>

Support our sponsor and take advantage of the PSLAC Membership Discounts...



Toll Free Order Lines:
1-(888) 263-5277
Fax: 1-(888) 263-5086

Hide Crafter Leathercraft

Offering wholesale discount to PSLAC members
ON-LINE CATALOG www.hidecrafter.com

7936 Camp Bowie West
Ft. Worth, TX 76116

George Hurst, Manager
email: hcrafter@flash.net

Steve Derricott



Twister D Products
301 E. Bower St.
Meridian, Idaho 83742
(208) 884-3766 - Fax (208) 884-3767
A Division of Gfeller Casemakers, Inc.

www.lacemaster.com

Offering a 10% discount to the PSLAC members

Outside Washington
1-800-343-9949

(206) 328-0855
Fax: 328-0859

MACPHERSON

Leather Company

Leather, Shoe Finding and Saddlery

Offering a 30-40% off retail discount to the PSLAC members

519 - 12th Avenue S.
Seattle, Washington 98144

GLOBAL LEATHERS



Web site: www.globalleathers.com
Telephone : 212-244-5190
Fax : 212-594-7515
e-mail: globalleathers@usa.net
Paul Crystal

Offering a discount to PSLAC members

...more sponsors on the following page...



Dusty Johnson

PLEASANT VALLEY SADDLE SHOP
1220 S. County Rd. 21
Loveland, CO 80537
Phone: (970) 669-1588
Fax: (970) 669-1589
E-Mail: dusty@pvsaddleshop.com
URL: <http://www.pvsaddleshop.com>

Offering a 20% discount to the PSLAC members

BRETTUNS VILLAGE LEATHER

**Selling odd lots, miscellaneous overstocks,
bargain leathers and leathercraft
accessories, all from Maine, only online**
Sides, Full Hides, Buckles, Key Rings, Laces, Thread,
Tools, Rivets, Scrap Pieces, Elk & Buffalo Scrap
Always Free Shipping in the 48 States

www.brettunsvillage.com

Leather Factory

Durham Hefta
Manager



Portland

Phone (503) 255-8818
Fax (503) 255-9011
Toll Free (888) 277-3360
www.leatherfactory.com

13221 N.E. Whitaker Way
Portland, OR 97230-1128

Offering a wholesale discount to the PSLAC members



Leather, Suede, Skins, Inc.



261 West 35th Street
11th Floor, New York, NY 10001
Tel: (212) 967-6616
Fax: (212) 564-5759
www.leathersuedeskins.com
Email: leather.suede.skins@att.net

Offering a 10% discount to the PSLAC members

Tandy Leather Boise

JoAnne Tackitt, Manager
285 N. Orchard St.
Boise, ID 83706



Toll Free:
1-800-930-2850
(ph. 208-375-5589. Fax. 208-375-7168)

<http://www.tandy-leather.com>

Offering a wholesale discount to the PSLAC members

The Leather Factory

Kermit P. Creek
Manager



Billings

Phone (406) 256-1355
Fax (406) 256-1360
Toll Free (888) 277-3323
www.leatherfactory.com

115 North 30th Street
Billings, MT 59101-2032

Offering a wholesale discount to the PSLAC members



TWL Leather, Inc.

Toll Free: 1-800-477-9923
2017A White Settlement Rd.
Fort Worth, TX 76107
(817) 877-5427, Fax (817) 877-5432

Offering a wholesale discount to the PSLAC members

Tandy Leather

Jim Linnell
Director of Operations



Toll Free:
1-888-890-1611

<http://www.tandy-leather.com>

Offering a wholesale discount to the PSLAC members



Leather Factory Spokane

28 West Boone Ave, Spokane, WA 99201
Phone: (509) 328-9939
Toll Free: 1-800-822-8437
Fax: (509) 326-7019

Offering a wholesale discount to the PSLAC members

www.leatherfactory.com



Taking I-90

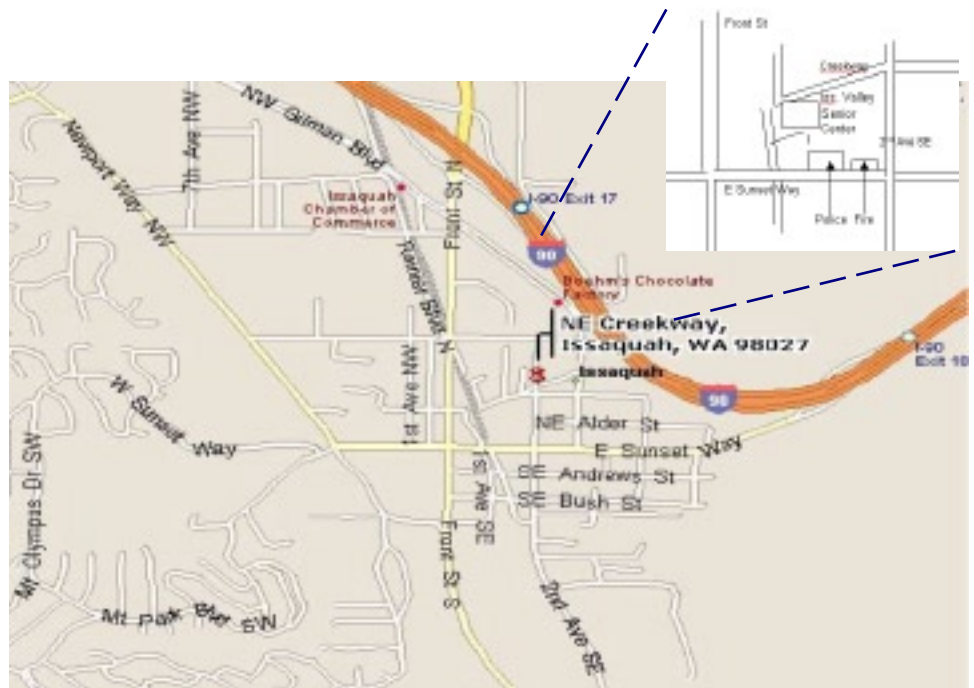
From Auburn: come north on Hwy167, or I-5, then I-405 north, then onto I-90, going east:

From Everett: South on I-5 to 405 South, or to I-90, going east:

From I-90 get off on exit 17/Front St., and bear right onto Front Street. At the third stoplight, turn left onto E Sunset Way, then see below:

Taking Hwy 18 from around Auburn to Issaquah

Get on Hwy 18 going East, from Auburn, it's about 12 miles to Maple Valley, then at about 2 ½ miles after Maple Valley, look for the turn off to Issaquah Hobart Rd SE, turn onto ramp 276th Ave SE and go 0.6 miles, bear left onto Issaquah Hobart Rd SE. It's about 8 ½ miles from there to Issaquah. Hobart becomes Front Street S, which takes you into downtown Issaquah. Turn right onto E Sunset Way, then see below:



After turning onto E Sunset Way:

go two blocks (past the Police and Fire Stations), turn left onto 2nd Ave SE, go past the old Senior Center building on your left, and a baseball field, then left onto NE Creekway, go almost to the railroad tracks. The new Issaquah Valley Senior Center is a brick building on your left, parking in front of it. There is also parking behind, from Sunset, turn left into the parking area, right before the Police Station (look for a large parking sign on your left), and follow it till you see a kids play ground.

Address: 75 NE Creekway, Issaquah, WA 98027

**PSLAC
c/o Barbara Lourdes
PO Box 1144
Auburn, WA 98071
USA**

