

Raw Hide Gazette

Copyright © 2008 by PSLAC, All Rights Reserved

“Without question, the *Raw Hide Gazette* is by far the best and most informative and comprehensive Guild publications of all of them! You are to be commended for your very fine and professional efforts. Keep up the good work. With admiration”
/signed/
Al & Ann Stohlman, December 1997

Puget Sound Leather Artisans Co-Op

December 2008

Hide Highlights

Page

- 2 Carving Christmas Cards Demonstration by John Wickstrom
- 3 Norm Lynds' Custom Tools
- 4 November PSLAC Meeting Pictures
- 4 Emerald Valley Leather Crafters Guild news
- 5 Mystery Braid Belt
- 6 Free Leathercraft Classes in the Tri-Cities of Washington
- 7 Leather Class Pictures
- 8 Leather Class Pictures
- 9 FERDCO 8th Annual Leather Show at Pendleton, OR
- 10 Knives by Graycloud
- 12 Paula's Knife Photos by Graycloud
- 13 PSLAC East Happenings
- 14 Workshop Co-ordinator's Report
- 14 Sea Leather Wear
- 15 Upcoming Events
- 16 Upcoming Events (cont.)

Meeting Announcement

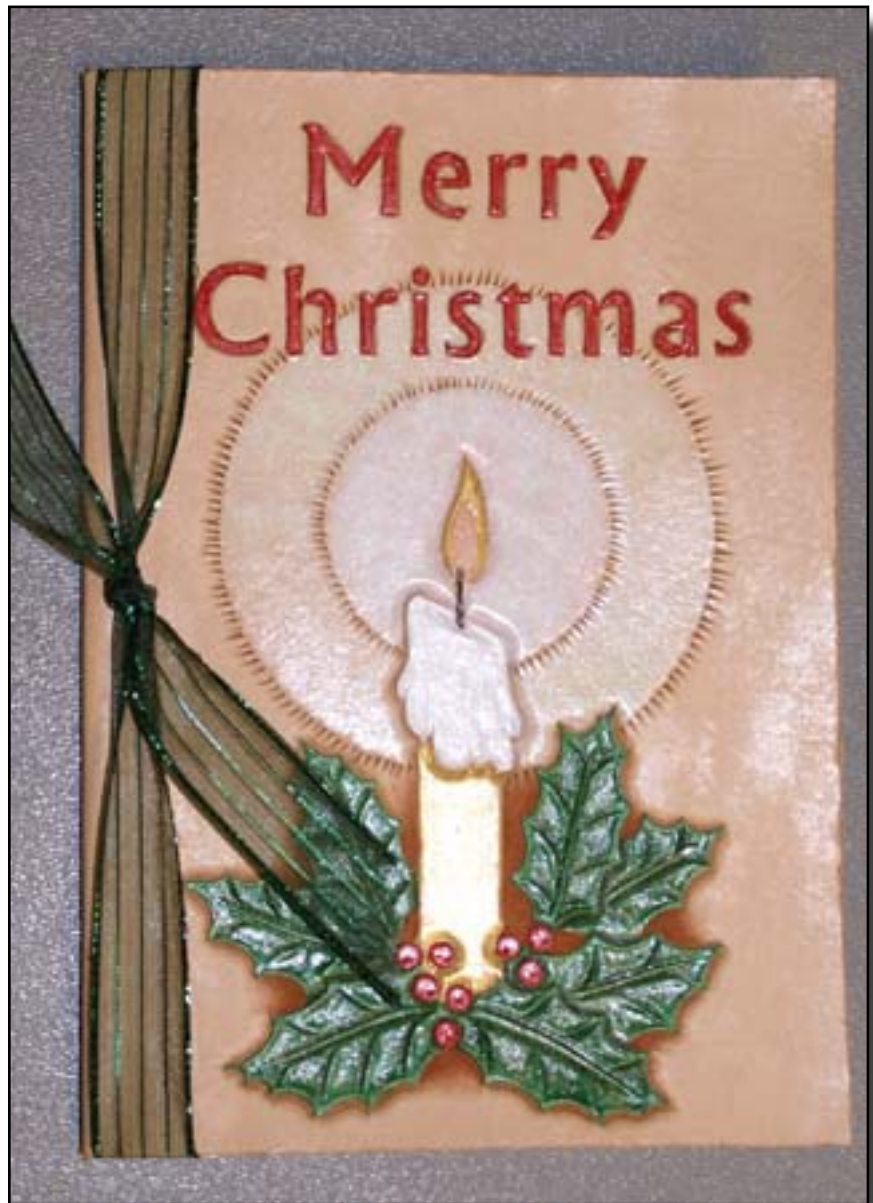
NEXT MEETING

14th December 2008

*Mini-Demos (Start at Noon) followed by the General Meeting (Starts at 2PM).

Rolled Edge and Round Corner bindings with Paula Marquis

(*This month only the meeting is first, then the Demo)



Leather Christmas Cards by John Wickstrom



Carving Christmas Cards Demonstration by John Wickstrom

Carving Christmas cards was the demonstration given by **John Wickstrom** at the November meeting. John gets most of his ideas and some patterns from cards that they have received and saved over the years. He had patterns for us to use as well as several which had been completed.

Light weight tooling leather is used, usually about 2 oz. After the carving and tooling they are finished by using various coloring methods (dyes, stains, acrylics, pens, etc.) Some may be antiqued. After the coloring the finish coat is added.

If glitter is desired, he dilutes Leather Weld 50/50 with water and brushes it onto the areas desired and glitter is sprinkled on. The excess falls off when the piece is turned over. *(Note: Perform all glitter operations away from your leather working area since some glitter is metallic and will spot wet leather.)*

It also just keeps showing up even after you think you've cleaned it up.)

The leather card is folded in half and the



message added to the center, either made up or from an existing card. These may be glued into place, or held in place by punching 2 holes on the fold and tying them in place with a ribbon.

Norm Lynds



Norm Lynds' Custom Tools

(ed. note: There are free leather classes held each Monday from 5-8pm in Pasco, WA. and people were asking about Norm's tools, so I asked Norm.)

I have been teaching a leather class with **Ivan, Larry, Herb, and Carla** and your tools have been shown and used. I need to know what you are making, prices and contact information to give to the students.

Bob,

Oh boy, where do I begin. **Modelers** first, as that was what got me started. Back a few years I wanted a **Peter Main** modeler, but none were available at the time, so I borrowed Len's, I think it was, and made one of my own. At the next meeting I had several orders.

I can make them with just about any style of point, but I have quit making the very narrow arrowhead type as I lose too many during the forging. They now come to the point without the narrow cut. They can be round or pointed tipped, fairly flat or tipped up. As you probably noticed, some of them leave a black mark behind which can easily be removed by using lemon juice. I am going to switch over to some stainless and see how that goes. I don't have the capability of tempering it like I do the O1 or W1 class metals, so I don't know how it will hold up under hard pressure.

Lifters, similar to **Tandy's Pro Petal**. I make them in 1/8, 5/32, and 3/16ths for the most part, but can make them in just about any diameter that I have a drill rod for.

Embossers of various diameters. Most popular are 1/4 and 3/8". The largest I've made is 5/8".

Bouncers for saddle makers.

Hair blades made to fit the swivel knife. 20, 25, 30, 40, 50, and 75 lines per inch. Can make them sharp to cut or dull them down to just indent.

Robb Barr style hair blades made from X-Acto hobby blades epoxied into a turned handle. Epoxy softens when heated, so to change them heat up the epoxy and pull them out, replace them. General and I are working with **Andy** to come up with a quick change handle.

A **small T square** using a 6 inch ruler attached to a nice wood cross bar.

Various **fids**. Found out with Linda that the ones I was making for lacing just don't work for braiding, and have to beef up the ones for braiding.

Edge burnishers made for both drill press and Dremel use. (Invading Ivan's territory there)

Then I like to do special requests. Doing the same things all the time gets boring.

I also **rehandle scalpels**, both #3 and #4 handles (#3 is by far the most

popular) I modify the working end and polish it (again, per Peter), and add a nice wood handle.

Various mauls and mallets.

- Modelers \$25
- Lifters \$15
- Swivel knife hair blades \$5 ea or \$35 for the set which includes a wood block for holding them
- Fids \$15.
- Scalpels \$15
- Embossers \$15
- Drill press burnishers \$20
- Dremel burnishers \$5
- Small T square \$5
- Mauls and mallets \$35



These are things that come to mind right now. They can either contact me through e-mail sagerat2003@yahoo.com or phone 425 357-1001.

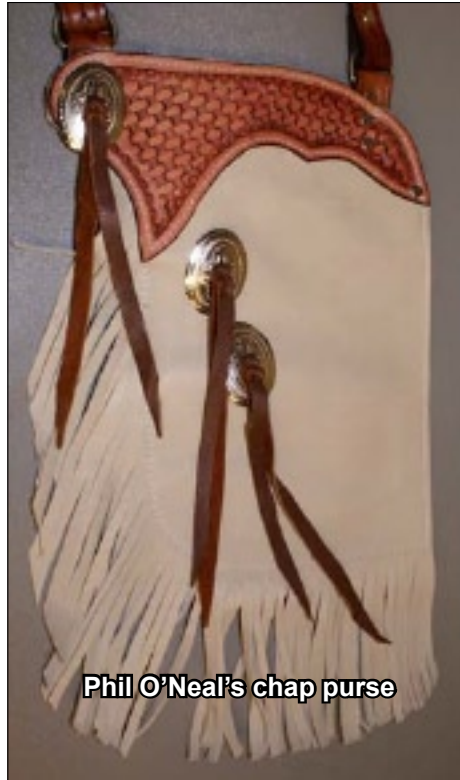
Looks like I'm going to have to update my pictures.

Thanks,

Norm Lynds



General



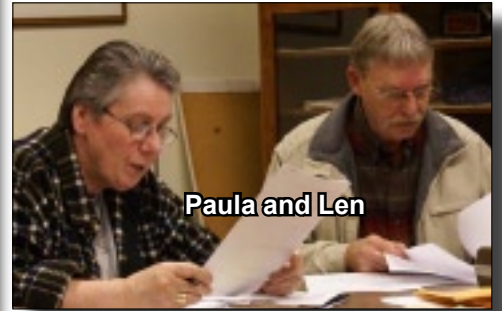
Phil O'Neal's chap purse



Ken Eriksen



Phil O'Neal's small bag



Paula and Len

November PSLAC Meeting Pictures

Emerald Valley Leather Crafters Guild news

Well we had a great time at our last meeting. We have our new logo now that was voted on last meeting.



For those of you that voted on line we just did not get enough votes to make a decision on it so we held another vote at last meeting. I also talk to **Charlene Stovin** about doing a web site for the guild. For those of you that do not know Charlene has a computer degree, so any ideas that any of you might have for the web site please get your ideas to me so we can keep this simple.

I would also like to welcome are new member to the Guild:

Robyn, Beci, Francies and the two

Jeanne's

Scott and I also talked to Rob at Oregon Leather for we are growing fast and we need a place to sit and do are classes. **Beci Loeschen** found us a new place, which we will keep as an option. But after talking with Rob we have a few tables in back, but will need to get chairs also he will have a place for us to put a cabinet so we can put our extra tools and stuff we use for our classes so that we do not have to haul them back and fourth all the time. I want to thank Beci for her time and effort in finding us that new meeting place but at this time we have decided it best to stay at **Oregon Leather**, we have every thing we need there. There are also some extra benefits which we have decided we will tell the rest at next meeting which will be worth the time to come and introduce yourself and find out how much fun they really are.

We need ideas for what kind of classes you would like to have in the future. Who would you like to have as a guest Teacher? We have some really neat talent in the guild now and can learn a lot we will be having competition soon and at some time against other guilds as well. We will also be doing the lane county

fair. Also, ideas people! What do you want to learn and do?

I want to say Thank you to all of you. This could not happen if it were not for all of you. And a bigger Thank you to those of you that come to the meetings and classes. You gals and guys are awesome. Our next meeting is Nov. 22, at 10.00 at Oregon Leather. I will do my best to have enough chairs there for everyone. But, if you can bring one just in case till we get this taken care of that would be great. I look forward to seeing everyone soon at our next meeting and meeting some new members.

Gary

Emerald Valley Leather Crafters Guild, President



Mystery Braid Belt

by Herb Rocky

A Mystery Braid belt will take more leather than normally required due to the interlocking pieces required for the braid. For instance, with a 1 1/4" belt, the desired braiding length may be 12". The 3 strips (1 cm each) are cut to 12 3/4" so after 2 sets of braiding the final length is 12". A 1/2" is lost for every one complete set of braiding steps. The total length of the belt is left to the craftsman using normal sizing methods.

1. The first step is to mark out the area for the braiding. This area will be left to deal with last.
2. The second step is to finish the rest of the belt as you normally would for the billet end and the buckle end. Do all tooling/stamping at this time.
3. Next, cut the strips using a straight edge. Be careful that the material does not "extrude" away from the straight edge which makes the strips unequal in width.
4. At the end of each cut, use the smallest round punch to punch a hole so the leather strips will not tear into the rest of the belt.
5. Edge all edges using a round edger. Do the strips as well. Slick all edges using your desired method.
6. If desired, dye the belt at this time. Be sure to get between all the edges of the stripping.
- 7~Finish the belt with conditioner and polish. The belt should now be ready for braiding.



8. Support the belt at one end so it is secure and will not move. For instance, use a clamp at the buckle end to clamp to a work bench or similar. It can be done



free hand after some experience.

9. Refer to Bruce Grant's book, "Leather Braiding", page 10, plate #5, Trick Braid if desired. However, the steps are fairly straightforward and not difficult.



10. Looking at the 3 strips, cross the right hand strip over the center strip and then the left hand strip over the center strip.



Hold this last cross-over firmly. Pull the bottom of the belt upward toward yourself and "rotate" it down and under the right hand strip and pull tight at the bottom. Continue to hold the last braid firmly so it doesn't move. This completes one braiding sub-step.

11. Now cross the right hand strip over the center strip and then the left hand strip over the center strip. This time, pull the

bottom of the belt upward toward yourself and rotate it down and under the LEFT hand strip. This now completes 2 sub-



steps and one complete braiding step. The strips should now be worked out so



the belt is straight and all braids are laying flat. The braiding sequence then is "Cross,



Cross, Rotate right, Cross, Cross, Rotate Left". You will notice that the braiding has a very loose look to it, so more braiding will be required.



12. Move the braiding as high on the belt as it will go. Repeat steps 10 and 11 once more. The braided area should now look a little tighter. If necessary, repeat steps 10 and 11 as many times as necessary to get the desired look in the braiding.



Free Leathercraft Classes in the Tri-Cities of Washington

Well it started!

Ivan Sampson, Larry Stirling and I sent out the following to members of our loosely form group—the **Desert Leather Crafters Group (DLG)**:

Subject: FREE Leathercrafting Classes Arrangements have been made to present a series of Weekly Leathercrafting Classes. Larry and Anni Stirling are making available a large section of their business office workshop to be used to teach leathercraft.



The initial idea is similar to what the PSLAC East leather group in Spokane does, by teaching basics for those who want basics and to teach and share advance techniques for those who are interested.

We would start with a project (or bring your own) and the class would teach the basic tools, tool sharpening, casing, design transfer, swivel knife



use, stamping, coloring, dying and finishing.

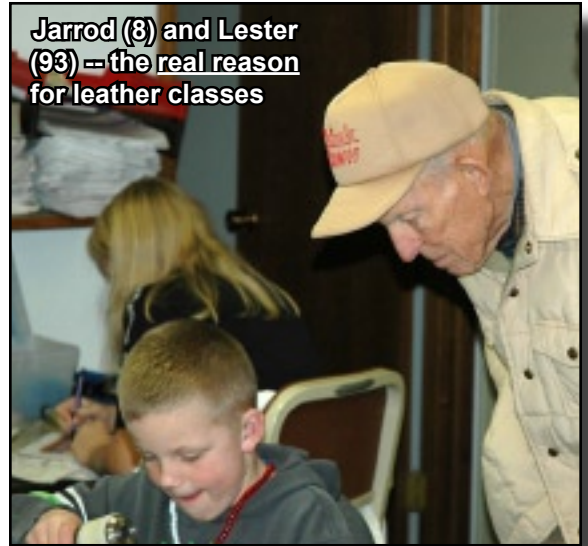
The classroom/workshop would be open from 5-8pm every Monday evening starting November 3rd at 1910 N 4th Ave next door to Blue Cross Animal Hospital (Stirling Imaging, Inc). There are no fees and no limits on class sizes. ALL are welcome and ALL levels



of experience are expected. For more information call Ivan (521-1371) or Bob (392-2589).

We were surprized! Since that first meeting, the group has grown larger each week. We now have added more volunteer instructors: **Herb Rockey, Carla Irving and Ron Brooks.**

Each student has done the pre-requisit western flower and has started on their own interest with their own project. We have Micheal doing a Celtic belt, Ron Ginser doing roses for a saddle, Dal Hoover working on lacing, leather vest and book slip covers. Anni is practicing on horse heads.



Jarrold (8) and Lester (93) – the real reason for leather classes

Two younger people are making small projects and developing their skills.

The Michael's family are trying wallets and



some small projects.

With all the other people there it is hard to keep up with what each is doing. Luckily, we have many volunteer instructors.

Bob Stelmack
Richland, WA





Leather Class Pictures



Leather Class Pictures



See the burnisher in action at:
uk.youtube.com/watch?v=1uMUSZlgyjg

FERDCO 8th Annual Leather Show at Pendleton, OR

I was on a mission to pick up an edge beveler for John Wickstrom at the FERDCO Leather Show, not that I needed an excuse to be there! So, walking around I first fulfilled my mission, then looked for things I couldn't live without.

I found two sides of dark blue leather to recover our dining room chairs, so I guess this was for the household and meant that I could keep shopping.

Rounding the corner, I saw Ivan selling his new Fantastic Leather Burnisher. His sales had started out a little slow in the morning, but by the time the Leather Show closed, he had sold out of burnishers, motors and dual

burnisher set ups. People who bought on first day had gone home, tried the burnisher and called their friends who came the next day and bought on recommendation of the new owners of the Fantastic Leather Burnisher.

uk.youtube.com/watch?v=1uMUSZlgyjg

...or the short version...

uk.youtube.com/watch?v=dv6Lgc2_4Nw

Also, see it on eBay at (search with "fantastic leather burnisher"):

eBay Fantastic Leather Burnisher

Bob Stelmack
 Richland, WA



Knives by Graycloud

One of our members, **Robb Gray**, started making knives a year and a half ago and has progressed fantastically to say the least. He specializes in **high quality hunting knives** in the \$350 to \$600 range, but in my humble opinion, he will soon be in the \$1000 plus range.

His blades are made of **440 stainless steel bar stock**. The profile is drawn on the blank and ground out using belt grinders. Now starts the hard part, grinding the bevels on the blade keeping all the lines symmetrical, straight, and ensuring that the edge of the blade comes out in the middle, and in a perfectly straight line down it's length. All these lines must be functional, balanced, and pleasing to the eye. After the shape is finalized and nearing the final dimensions the belts are replaced on the grinder using a series of finer and finer grits down to polishing. The purpose of each grit is to remove the coarser scratch lines from the previous belt.

After preliminary polishing is done the knife is sent out for tempering. When returned, polishing is completed and his logo "**Graycloud**" is etched into the blade. The guard, which is a rectangular piece of either brass or nickel silver, is prepared, fixed into position, and silver soldered in place. If a rear bolster is desired it is attached. Preliminary shaping may be done now.

The handle scales are now selected, fitted and attached. The shaping of the guard, bolster (if there is one), and the scales is done. The metal work is polished and the finish applied to the scales, and everything finish polished and sharpened. Robb likes to use exotic and highly figured wood for his scales. He also uses various natural materials such as buffalo horn, water buffalo horn, fossilized mastodon ivory, stag antler, etc.

After the knife is completed he designs, cuts, tools, sews, fits, and finishes a sheath for the knife.

The latest creation is a Bowie style about 14 inches long he made for **Paula**. He con-



fesses that this one he had roughed out by another knife maker due to it's size, which is larger than his current equipment will handle. The handle material is from a piece of **Australian wood** that **George** has been carrying around for over 40 years.

Robb is currently finishing a set of steak knives. Price, well, I will let Robb divulge that if he desires. Suffice to say that you won't find a set like it in the stores.

Pictures don't do justice to his work. These are the type of things that when you see them, you just can't keep your hands off them.

Norm Lynds





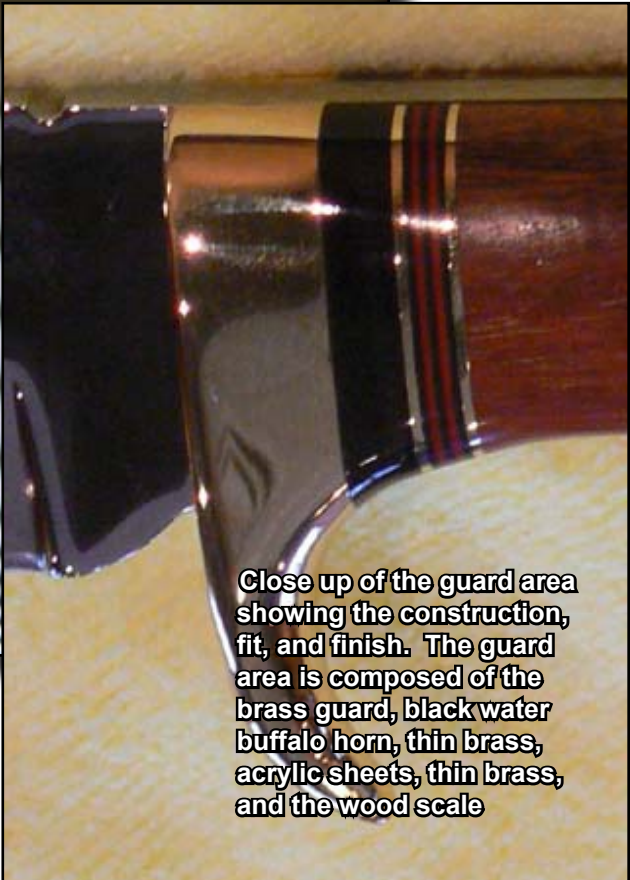
Overall knife



Close up of the handle



Close up of maker's stamp. Quality of the polishing can be seen in the reflection of the blinds.



Close up of the guard area showing the construction, fit, and finish. The guard area is composed of the brass guard, black water buffalo horn, thin brass, acrylic sheets, thin brass, and the wood scale

Paula's Knife Photos by Graycloud

PSLAC East Happenings

Woody Collins and I split up the November class at the **Spokane Tandy Leather Factory**. Woody worked with the group that had signed up for a special 6 week class on kits and I worked with a Dad and his three young sons who were totally new to leathercraft. I got so busy with the family that I forgot to get pix of them before they left but did get Woody and his group. In the picture is **Steve Camp, Larry Petersen, Woody Collins and Cathi Heberling**.

The weekend before Thanksgiving, Woody and I attended the **Custer Christmas Show** at the Spokane Fairgrounds. The two pix show our booth and Woody patiently waiting for customers. Sales were sporadic running both hot and cold depending on time and day. Thank God for the \$3 and \$4 items which turned out to be our bread and butter. The good thing is I managed to turn some old inventory and to attract a wholesale buyer for my pillows at the end of the show.

Ken Bush

White Rose Leather
11923 E. Fairview Ave.
Spokane Valley, WA 99206



Workshop Co-ordinator's Report

The last meeting for the year coming up and then it'll be Christmas!

For those I won't see at the meeting to talk to personally, I wish you all and your families the Season's Greetings.

Paula will be doing the mini-demo at the meeting, but, due to the fact that she cannot get there before 2.00p.m., she will do the demo from 2.00p.m. to 4.00p.m. and the meeting will be from noon to 2.00p.m. including socializing.

Peter Main's Box Making Workshop for the end of August has now been confirmed and Peter will definitely come. The workshop will cost \$220.00 per person for the two days. As the time gets closer we will get a tool and materials list from Peter.

Our first all day workshop will be the last Saturday in January (31st), **Carving and Tooling a Dragon with Paula Marquis** and will be at my home - 4908 Harbor Lane, Everett, 98203 - phone: (425) 438 1709. It will be from 9.00a.m. to 5.00p.m. Paula will have at least three different dragons to choose from. She suggest 9/10oz leather if we want to make a picture of it and frame it. If it is wanted for a panel on a bag, case, folder, etc., then whatever leather you choose for that product will be needed. Suggested tools to bring are swivel knife, stamping stone, mallet, bevelers, backgrounders, modelling spoons, various sizes of these tools will be required.

With the economic situation and the small attendance we had at the last meeting, it was difficult to gauge the response to **Jackie Holliday, Karen and Bob Stelmack's classes**, so I would like to get some definite ideas of numbers and interest in these classes at the December meeting so arrangements can be made for these classes.

See you all at the meeting.

Len Madison
Workshop Co-Ordinator.

Sea Leather Wear

Fish Leather Stocklot in Light Colors
Fish Leather Sampler in Various Finishes

Greetings, **PSLAC**:

You may be noticing a new look and format for this email. This is just a change in the email delivery method for news from Sea Leather Wear.

I hope that changes in our website offerings, now in effect, will be of interest:

Our sampler offerings now include:

- ▶ a sampler of skins in the high grain finish. These are glazed, but the scale pockets have not been completely flattened.
- ▶ a sampler of skins in the variety of finishes that our fish leather has been made in, which includes ruffled suede, glazed, foil, high-grain, silk and pearlized.

Our stocklot offerings now include single colors, in addition to the color groups:

- ▶ The colors of black, chocolate, lilac, magenta, mermaid green, mint green, scarlet, seafoam, seaweed, and white are now offered in glazed stocklots.
- ▶ The colors of black, chocolate, dolphin grey, ebony mist, faded blue denim, goldfish, mermaid green, royal blue, sahara, scarlet, sea urchin, seaweed and shrimp are now offered in suede stocklots.
- ▶ There is also a new offering in the grouped colors: In addition to browns, greens, reds and blues, we are now offering light shades - these are selected from white, oyster, shrimp, seaweed, sahara, and faded blue colors.

Our factory seconds offerings now include glazed skins.

To give a clearer "picture" of the colors, a video has been added on our website, which I hope will be more informative to you about the color differences of our offerings.

If you have enquiries about any color or quantity combinations that are not shown on

the website, please get in touch.

Thanking for your interest,

Stanley Major
Sea Leather Wear
c/o Calgary Ecommerce Services
210 86th Ave. S.E., Unit 86
Calgary, Alberta T2H 1N6
Canada
Our telephone:
403-689-4701
www.sealeatherwear.com



Upcoming Events

Western Washington (Seattle/Tacoma/Everett) PSLAC CURRENT SCHEDULE FOR 2008/2009

- General Member's meetings are on the 2nd Sunday of each Month, (noon till 4.00p.m. approx.) unless specified below.
- Meetings held at Issaquah Valley Senior Center, 75 NE Creek Way, Issaquah. WA. 98027.
- February meetings are held at MacPherson's Leather, 519 12th St. S., Seattle WA.

2008

Mini-Demos (Start at Noon*) followed by the General Meeting (Starts at 2PM). (*This month only the meeting is first, then the Demo)

December - Rolled Edge and Round Corner bindings with Paula Marquis.

All-Day Workshops.

October, November & December - There will be no workshops as everybody is busy with Christmas orders.

2009

Mini-Demos (Start at Noon) followed by the General Meeting (Starts at 2PM).

January - Inverted Carving with Paula Marquis.

February - No Demo - Meeting at MacPhersons.

March - Sharpening tools with Andy Stasiak.

April -

May -

June - BBQ Picnic, Garage Sale and Bill Churchill Award.

July - UFO Workshop/Meeting at Tandy, Seattle

August - Summer Break.

September - Summer Break.

October -

November -

December -

All-Day Workshops.

January 31st - Carving and Stamping a dragon with Paula Marquis (to be finalized)

February 27th, 28th & 29th - Embossing the Wood Spirit with Andy Stasiak (Friday evening, Saturday and Sunday)

March 28th - Covering a Frame with Leather with Andy Stasiak.

April 25th - Colouring the dragon with Jackie Holliday (to be finalized)

May 30th - Carving and tooling (embossing optional) Karen Stelmack's Lion's Portrait with Paula Marquis

June 13th - Painting the Lion's Portrait with Karen Stelmack.

July 25th - Pacific Northwest Native Designs with Bob Stelmack.

August - (early) - Bob Beard - subject and date to be confirmed.

August - 29th & 30th - Making a box with Peter Main at Len's home.

September -

October -

November, December - Workshops will be considered if there are enough subjects and requests.

Breakfast informal get-together locations:

North breakfast >>> Last Friday of the month at 10:00 AM at: Crossroads Restaurant, 1904 201st Pl. S.E., Bothel. WA.

South breakfast >>> The 3rd Saturday of the month at 8:30 AM at: Oscar's Restaurant, 8726 S. Hosmer St., Tacoma, WA, phone: (253) 548 2419

Upcoming Events (cont.)

Eastern Washington (Tri-Cities or Spokane) CURRENT SCHEDULE FOR 2008.

Tri-Cities Desert Leathercraft Group (DLG) Member's meetings are on the 3rd Saturday of each Month, unless specified below.

- Informal meetings held at 2532 Banyon St., Richland, WA 99352 (call Bob at 509-392-2589 for directions). Google map reference: +46° 16' 19.20", -119° 18' 32.40"

General Meeting, Demos and Workshops.

November - Mystery Braid with Herb Rockey

December - OPEN

FREE Leathercrafting Classes

Arrangements have been made to present a series of **Weekly Leathercrafting Classes**. Larry and Anni Stirling are making available a large section of their business office workshop to be used to teach leathercraft. The initial idea is similar to what the leather group in Spokane does, by teaching basics for those who want basics and to teach and share advance techniques for those who are interested.

We would start with a project (or bring your own) and the class would teach the basic tools, tool sharpening, casing, design transfer, swivel knife use, stamping, coloring, dying and finishing.

The classroom/workshop would be open from 5-8pm every Monday evening starting November 3rd at 1910 N 4th Ave next door to Blue Cross Animal Hospital (Stirling Imaging, Inc). There are no fees and no limits on class sizes. ALL are welcome and ALL levels of experience are expected. For more information call Ivan (521-1371) or Bob (392-2589).

Spokane PSLAC East Member's meetings are on the 2nd Saturday of each Month, unless specified below.

- Informal meetings are held at: the Spokane Tandy Leather Factory Store, 28 West Boone Ave., Spokane. WA 99201.

General Meeting, Demos and Workshops.

Now that summer is passing, we are starting up the **Tandy Leather Factory** classes again. The schedule is the same with a few small changes:

1. It is still held on the **2nd Saturday of every month**
2. We are splitting the day into 2 sessions. The first session will be from 10 Am to Noon and the second session will be from 1 PM to whenever everyone gets tired. Feel free to attend either or both sessions and please bring your ideas, wants and/or needs so we can have classes that will be of a benefit to all of you.

PSLAC Members Only Advertisement Page

Any PSLAC Member can advertise leather related products or services, subject to approval. Just send your text, picture and/or logo to stelmack@nwlink.com



MARQUIS UNIQUE LEATHER ARTISTRY, LLC

I make almost anything that can be made from leather and can be sewn by hand. A lot of my works are 'bespoke items', meaning, one of, individual custom requests, ranging anywhere from books and folders to rifle scabbards, holsters and golf bags, fully carved and stamped, and any and all articles in between, which also includes moulded bowls and pictures.

Phone: (206)-523-6295

Email: marquispg@aol.com

www.marquisuniqueleather.com



Black Horse Leatherworks & Saddlery specializes in high quality & unique custom western tack and apparel. We make some English items such as Schooling chaps & Stall items. We make all our leather items one at a time, by hand per our clients specifications. All items are custom fit with an endless array of options to choose from. Each is a small piece of "working art". We make all our items here in our own shop - nothing is sent out. This helps us maintain our high standard of quality that our customers have come to expect from us. Custom silver items are available for your tack and apparel needs in addition to our lines of fine silver shown in the website. We also offer Garcia bits & spurs and bits & spurs from Sleister.

C.E. Gessell, Owner

Our Motto: If you can imagine it... we can create it!

Leather Big Book Covers
www.leatherbigbookcovers.com
by **Bob Stelmack**



DIAMOND P LEATHER SHOP PHIL O'NEILL

Saddlery: New, Used-Repair
Custom Made Leather Goods
25051 - 180 Ave SE, Kent WA 98042
Hours By Appointment Or By Chance
(252) 631-9770

This Is A One-Man Outfit
All Custom & Repairs Are Crafted By Myself
Email: bjoneill@worldnet.att.net

Custom Maker Stamps Grey Ghost Graphics By Jeff Mosby

Custom maker stamps, laser cut acrylic templates and custom tapoffs for the leather craft field. Custom cut from your artwork at reasonable rates!

P.O. Box 30268, Myrtle Beach, SC 29588
(866) 205-9810 or (843) 903-4788

www.greyghostgraphics.com



Norm Lynds Toolmaker

Mallets, Modelers, embossing tools, lifters and others on request

Phone: (425) 357-1001

E-mail: sagerat2003@yahoo.com

Leather Company Advertisement Page



Toll Free:
(800) 541-3264
**Bee Natural
Leather-
care**
*The ultimate in
leather care prod-
ucts*

P.O. Box 820803, Vancouver, WA. 98682-0018
(360) 891-7178, FAX: (360) 891-7166
Email: bnatura@pacifier.com

SPOTLIGHT on PRO-CARV — Working and Tooling Leather Formulation

DIRECTIONS:

Dilute concentrate with water: 1 part PRO-CARV to 10 parts water is recommended for carving and tooling. When immersing the leather for shaping or forming, add 8 oz. PRO-CARV to 3 gallons of water.

NO CASING IS NECESSARY

Leather can be immersed or sponged with this solution. PRO-CARV eliminates the need to case leather. PRO-CARV allows you to begin working with the leather after immersing for 3-5 minutes because of the very rapid penetration into even the thickest hide. Allow the surface to dry somewhat before beginning forming or carving.

**Contact MacPherson's, Hide Crafters, Goliger's
Leather, and The Leather Factory for any of the fine
Bee Natural Leather products.**

Advertisement

RawHide Gazette

Editor / Publisher: Bob Stelmack
Co-Founders: Bill Churchill & General
Seymour
Treasurer/Secretary: Barbara Lourdes

The RawHide Gazette is published monthly (12 times a year). Address for information and correspondence: PSLAC, c/o Barbara Lourdes, PO Box 1144, Auburn, WA, 98071, USA, Email: billing@pslac.org

The RawHide Gazette is provided to the Puget Sound Leather Artisans Co-Op as a part of their membership benefits. Annual dues are \$24.00 USD per year.

All submissions are subject to editing for clarity and length. All articles submitted must be accompanied by name, address and permission of writer.

Advertising Rates

The RawHide Gazette now offers advertising space to interested parties. Ad spaces are as follows:

1/4 Page or Business Card \$60 USD
1/2 Page \$110 USD
1 Full Page \$200 USD

These rates cover a six month time period. PSLAC members are entitled to a 25% discount. Leather companies supporting PSLAC are given free Business Card size advertisement, additional space at regular rates.

The Puget Sound Leather Artisans Co-Op can be found at:

<http://pslac.org>

Support our sponsor and take advantage of the PSLAC Membership Discounts...



Toll Free Order Lines:
1-(888) 263-5277
Fax: 1-(888) 263-5086

Hide Crafter Leathercraft

Offering wholesale discount to PSLAC members
ON-LINE CATALOG www.hidecrafter.com

7936 Camp Bowie West
Ft. Worth, TX 76116

George Hurst, Manager
email: hcrafter@flash.net

▲ **NEW Sponsor** ▼

FERDCO



**In the US - Contact Ferdco Toll Free
@ 1-800-645-0197**
International - 1-208-689-3006
Fax - 1-208-689-3008
E-mail - ferdco@smgazette.com

*Offering a discount to the PSLAC members of a
10% off of any parts and supplies ordered and 2%
off of any equipment (sewing machines, etc.)*

▲ **NEW Sponsor** ▼

**Outside Washington
1-800-343-9949**

**(206) 328-0855
Fax: 328-0859**

MACPHERSON

Leather Company

Leather, Shoe Finding and Saddlery

Offering a 30-40% off retail discount to the PSLAC members

**519 - 12th Avenue S.
Seattle, Washington 98144**

Steve Derricott



**Twister D Products
301 E. Bower St.
Meridian, Idaho 83742
(208) 884-3766 - Fax (208) 884-3767
A Division of Gfeller Casemakers, Inc.**

www.lacemaster.com

Offering a 10% discount to the PSLAC members

...more sponsors on the following page...



Dusty Johnson

PLEASANT VALLEY SADDLE SHOP
1220 S. County Rd. 21
Loveland, CO 80537
Phone: (970) 669-1588
Fax: (970) 669-1589
E-Mail: dusty@pvsaddleshop.com
URL: <http://www.pvsaddleshop.com>

Offering a 20% discount to the PSLAC members

BRETTUNS VILLAGE LEATHER

**Selling odd lots, miscellaneous overstocks,
bargain leathers and leathercraft
accessories, all from Maine, only online**
Sides, Full Hides, Buckles, Key Rings, Laces, Thread,
Tools, Rivets, Scrap Pieces, Elk & Buffalo Scrap
Always Free Shipping in the 48 States

www.brettunsvillage.com

Leather Factory

Durham Hefta
Manager



Portland

Phone (503) 255-8818
Fax (503) 255-9011
Toll Free (888) 277-3360
www.leatherfactory.com

13221 N.E. Whitaker Way
Portland, OR 97230-1128

Offering a wholesale discount to the PSLAC members



Leather, Suede, Skins, Inc.



261 West 35th Street
11th Floor, New York, NY 10001
Tel: (212) 967-6616
Fax: (212) 564-5759
www.leathersuedeskins.com
Email: leather.suede.skins@att.net

Offering a 10% discount to the PSLAC members

Tandy Leather Boise

JoAnne Tackitt, Manager
285 N. Orchard St.
Boise, ID 83706



Toll Free:
1-800-930-2850
(ph. 208-375-5589. Fax. 208-375-7168)

<http://www.tandy-leather.com>

Offering a wholesale discount to the PSLAC members

The Leather Factory

Kermit P. Creek
Manager



Billings

Phone (406) 256-1355
Fax (406) 256-1360
Toll Free (888) 277-3323
www.leatherfactory.com

115 North 30th Street
Billings, MT 59101-2032

Offering a wholesale discount to the PSLAC members



TWL Leather, Inc.

Toll Free: 1-800-477-9923
2017A White Settlement Rd.
Fort Worth, TX 76107
(817) 877-5427, Fax (817) 877-5432

Offering a wholesale discount to the PSLAC members

Tandy Leather

Jim Linnell
Director of Operations



Toll Free:
1-888-890-1611

<http://www.tandy-leather.com>

Offering a wholesale discount to the PSLAC members

GLOBAL LEATHERS



Web site: www.globalleathers.com
Telephone : 212-244-5190
Fax : 212-594-7515
e-mail: globalleathers@usa.net
Paul Crystal

Offering a discount to PSLAC members



Leather Factory Spokane

28 West Boone Ave, Spokane, WA 99201
Phone: (509) 328-9939
Toll Free: 1-800-822-8437
Fax: (509) 326-7019

Offering a wholesale discount to the PSLAC members

www.leatherfactory.com



Taking I-90

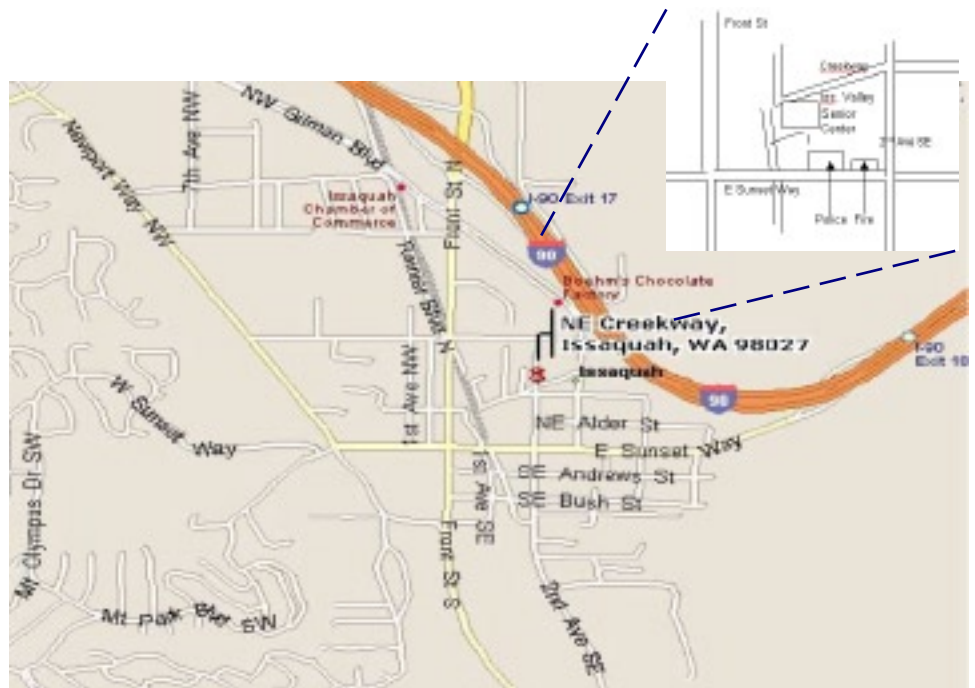
From Auburn: come north on Hwy167, or I-5, then I-405 north, then onto I-90, going east:

From Everett: South on I-5 to 405 South, or to I-90, going east:

From I-90 get off on exit 17/Front St., and bear right onto Front Street. At the third stoplight, turn left onto E Sunset Way, then see below:

Taking Hwy 18 from around Auburn to Issaquah

Get on Hwy 18 going East, from Auburn, it's about 12 miles to Maple Valley, then at about 2 ½ miles after Maple Valley, look for the turn off to Issaquah Hobart Rd SE, turn onto ramp 276th Ave SE and go 0.6 miles, bear left onto Issaquah Hobart Rd SE. It's about 8 ½ miles from there to Issaquah. Hobart becomes Front Street S, which takes you into downtown Issaquah. Turn right onto E Sunset Way, then see below:



After turning onto E Sunset Way:

go two blocks (past the Police and Fire Stations), turn left onto 2nd Ave SE, go past the old Senior Center building on your left, and a baseball field, then left onto NE Creekway, go almost to the railroad tracks. The new Issaquah Valley Senior Center is a brick building on your left, parking in front of it. There is also parking behind, from Sunset, turn left into the parking area, right before the Police Station (look for a large parking sign on your left), and follow it till you see a kids play ground.

Address: 75 NE Creekway, Issaquah, WA 98027

**PSLAC
c/o Barbara Lourdes
PO Box 1144
Auburn, WA 98071
USA**

