

Raw Hide Gazette

Copyright © 2009 by PSLAC, All Rights Reserved

"Without question, the Raw Hide Gazette is by far the best and most informative and comprehensive Guild publications of all of them! You are to be commended for your very fine and professional efforts. Keep up the good work. With admiration"
/signed/

Al & Ann Stohlman, December 1997

Puget Sound Leather Artisans Co-Op

April 2009

Hide Highlights

Page

- 1 Paula's Colored Dragon
- 2 Andy Stasiak's Sharpening Demo
- 3 Workshop Co-ordinator's Report
- 3 Emerald Valley Leathercrafters Guild Meeting Reminder
- 4 PSLAC East Meeting
- 5 PSLAC Meeting at MacPherson's Leather
- 6 Andy's Wood Spirit Workshop
- 7 Wood Spirit Pictures
- 9 Desert Leather Group February Meeting
- 10 Desert Leather Group February Meeting (cont.)
- 11 PSLAC North with Carol's Saddle in Process
- 12 The Bill Churchill Children's Leather Program 8th Annual AWARD Nomination Form for the Year 2009
- 14 Upcoming Events
- 15 Upcoming Events (cont.)

Meeting Announcement

NEXT MEETING

6th April 2009

One week early due to Easter

*Mini-Demos (Start at Noon) followed by the General Meeting (Starts at 2PM).

Finishing with John Wickstrom.

More demo than work.



Paula's Colored Dragon

(see last month for the carving)

Andy Stasiak's Sharpening Demo

The pre meeting demonstration at the February PSLAC meeting was given by **Andy Stasiak**. During this demonstration he showed the tools that he uses for **Sharpening and Honing Leather Tools**. These are a grinder with paper wheels mounted on it, a piece of 600 grit wet and dry sandpaper, and his stropping board.

First, the grinder is reversed so that he is working on the top of the wheels and they are turning away (up) from him, instead of down as the normal grinding wheels turn. One of the wheels is coated with a fine grit and beeswax. This is done for very fine grinding and sharpening. The second wheel is coated with a polishing rouge. *Very light pressure is used, as it is very easy to overheat a tool edge and burn it, thus removing the temper.*

A tool thus burned will not hold an edge, and will have to be reshaped, removing all of the blue/brown color. The very top of the wheel is used with the tool being held horizontal. The angle of the bevel is controlled by moving the tool down the wheel until the correct angle is found. As the picture shows, the guards have been removed from the wheels.

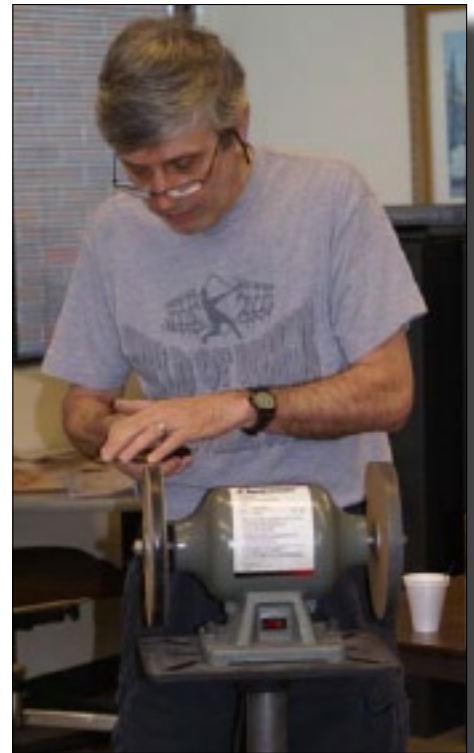
Second is a piece of wet and dry sandpaper, 600 grit or finer. Or, 2 or more grades from 600 down to about 2000 grit can be used. These are for sharpening the tools. If several grades are used, as each finer grade is used, check that all the scratch marks from the previous grade are removed. One of the nice things about wet and dry is that when it becomes filled with grit, wash it under the faucet and let it dry. Good to go again.

Third is the stropping board. Andy has made his with a flat stropping surface of very thin leather glued onto the board, several strips cut to the exact width of each of his French edgers, and a couple pieces of round leather for the round bottomed edgers. These boards are made of MDF (medium density fiberboard), tempered hardboard, or any other hard stiff surfaced material. Thin leather is used for the flat surface, glued with the grain surface up. The strips for the French edgers are made of a couple pieces of heavy leather glued together and then cut to the exact width needed. The round strips are made of 2mm lace and another about 8 oz. which has been edged to round over the top.

When sharpening, take long strokes, making sure to keep the same angle for the entire stroke. Sharpen only the beveled side. This would be both sides on the swivel knife blades, round knives, etc., and only one side on the French edger, punches, clicking knife, etc. As the blade is sharpened it will raise a very small burr on the opposite side. This will be removed during the stropping portion. Also, look down the edge of the blade when held so that light can reflect off the edge. If bright spots can be seen it isn't sharp. When only a very fine black line can be seen the tool is "sharp".

Use the same long strokes and consistent angle when stropping. Do not let your hand and arm rotate up at the end of the stroke. The edge and a short distance back, should be as bright as a mirror. Any scratches will drag on the leather.

Norm Lynds



PSLAC-WEST LEATHER WORKSHOPS

Workshop Co-ordinator's Report

With April here, Easter is nearly upon us. Due to Easter Sunday falling on the 2nd Sunday of the month and our normal meeting date, this **meeting will be a week early**, namely Sunday the 5th April.

The workshop demo for this month will be with **John Wickstrom** and he will talk about and show us how to get good finishing results on our projects. This workshop will be more demo than actual hands-on, so bring paper and pencil/pen for taking copious notes as John always gets such good results with his finishing methods.

We have **Andy Stasiak** for our all-day end of month workshop consisting of covering a picture frame with leather. As Andy can only accommodate 5 people comfortably at the **Tandy Shop in North Seattle**, we had the first 5 people do the workshop in March and have three more signed up for April 25th. There is room for 2 more people and they can sign up at the April meeting.

Andy has picked out the molding for the frame, interesting, but, not too complicated as this is only a one day workshop. We are having the frame made at a reasonable cost. The frames will be fairly large to accommodate the Wood Spirit from last month's workshop. Of course, those who are doing the frame and did not do the wood spirit, can put whatever picture they like into the frame. The cost of the frame will be \$32.00 each and the leather for the frame will be \$10.00 per person (this includes the glue we will need). The class will be from 9.00a.m. to 4.00p.m. Andy said for tools we need to bring - sharp knife, scalpel, modeling spoons

(various sizes).

Paula Marquis talked to **Carol Gessel** about the chap making workshop. Carol said the weekend of the 24th/25th October would work for her as she is booked up the following weekend. She will supply the pieces of leather that need to be tooled a couple of months earlier so we can get them all done and ready as it will be a full-on two days to do the rest of the chaps. The chaps will be the chink variety with fringes. The workshop will be at Carol's residence and we can have a look at her lovely Friesians and her new foal too.

See you all at the meeting.

Len Madison
Workshop Co-Ordinator

Chance to Win a Motorized Fantastic Leather Edge Burnisher by Ivan Sampson



Starting with the January 2009 meetings of PSLAC, PSLAC East and the Desert

Leathercrafters Group, everyone who attends the monthly meeting will be put into a drawing for a **Fantastic Leather Edge Burnisher with Motor** (115V, 1725 RPM, 1/8 HP, 1/2" arbor only) and 3 bars of blended wax. Instructions on use will be included.

The drawing for the Motorized Fantastic Leather Edge Burnisher will be held at the June meeting of the **PSLAC group's annual Bill Churchill Award** and Bar-B-Que.

Each meeting from January to May 2009 will send **Bob Stelmack** (stelmack@nwlink.com) a list of members to be included in the drawing.

We hope this additional benefit will improve the face-to-face sharing at the meetings.

Good luck to all!

Bob Stelmack
Richland, WA

Emerald Valley Leather- crafters Guild Meeting Reminder

Just a reminder our next meeting is this **Saturday, March 28th, 10 AM at Oregon Leather in Eugene**. As usual, please bring your basic tools and scrap leather. If you have a demo you would like to present, make sure to contact **Gary** or **Scott** so they can make it part of the agenda. We would also like you to bring and share any projects you

are working on. Scott will be sharing his dream catchers and Mandala.

Demos this time will include: Solid copper Rivet Setting (**Kathy**), Stamping the Tri-weave (**Scott**), Swivel Knife Finesse and Basic Carving Practice (**Joyce**).

Later in the meeting those who are interested in making chinks will have a pattern to trace and Kathy will talk about supplies and leather choice. She will bring brown

paper for copying the pattern(s), but please bring your own pencil etc. This will be an on-going project for those involved. For tracing the yoke and shield, you should have tracing film as well. About 2-3 feet should be enough.

See you there!

Kathy Florence

PSLAC East Meeting

We had another overflow class at the Spokane Leather Factory with lots of newbies. **Dave Torix** taught his simplified version of a Western Floral design that came from the Skiver newsletter. **Cheryl Utley** of the Leather Factory donated a hide for the class's use. She also donated an edger for a drawing which Dave promptly took the opportunity to demonstrate it's use in finishing edges.

Ken Bush



Grace Bundy was Verlane's last student before Verlane's passing and Grace brought the saddle she finished with Verlane.

4



5



6



1



2



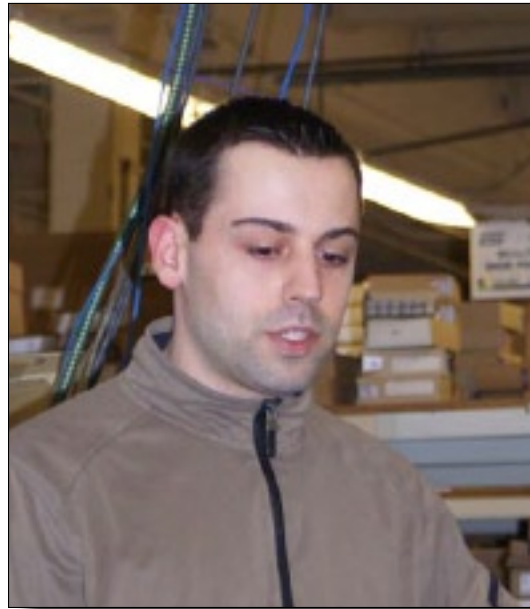
3

- Pic 1. Dave Torix teaching main part of class.
- Pic 2 My granddaughter Angelica Maynor won the edger drawing
- Pic 3. Ken Bush helping new student Jennifer Havens.
- Pic 4. Grace Bundy and the saddle that she completed as Verlane Desgrange's last student.
- Pic 5. Close-up of Grace's saddle.
- Pic 6. Another close-up of Grace's saddle.

PSLAC Meeting at MacPherson's Leather

The February meeting was held at **MacPherson's Leather** as we have for the past several years. One of the employees, **Patrick**, gave us a rundown on the current state of the leather business. The market and supplies of leather have been pretty stable, with the shoe finding part of the business having increased.

Norm Lynds



▲ Patrick



▲ John & ▲ Roger



▲ George & ▲ Phil



▲ Paula's dragon



▲ Ken & ▼ General



Andy's Wood Spirit Workshop

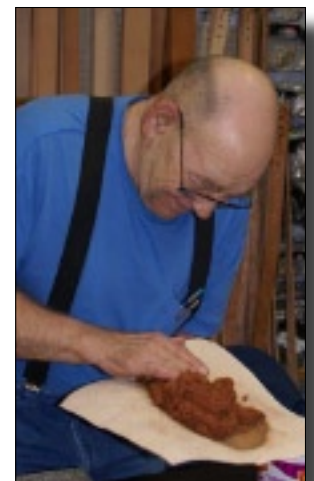
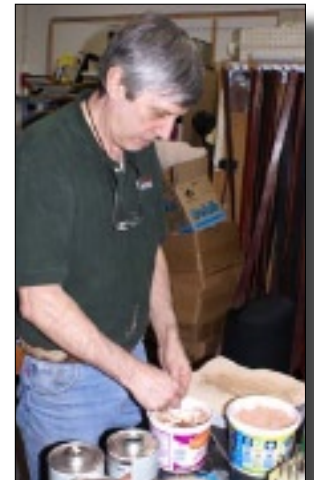
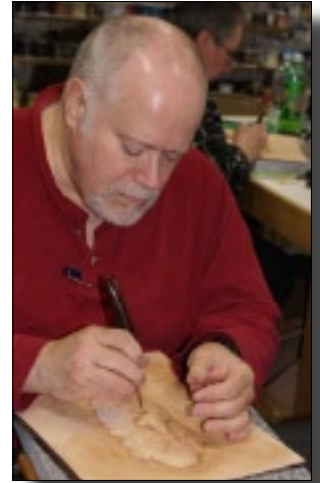
Friday evening, February 27th, a group of us gathered at the **Tandy shop in Seattle** for the beginning session of carving, embossing, and finishing a Wood Spirit. This project was taught by **Andy Stasiak** with **Paula Marquis, Ken Eriksen, Len Madison, General Seymour, and Norm Lynds** participating. This first session we traced our patterns onto the leather, did the initial beveling around the perimeter and then embossed the carving. After the embossing was done we filled the cavities with a mixture of leather dust and rubber cement. We set them aside to cure out over night.

Saturday morning we started the modeling, which was somewhat complicated by the packing material not completely curing. We used bevellers and modeling tools to do the modeling. During this process cuts were made to add packing material in cavities to fill out the face. We then undercut the hair around the face and beard to bring it forward. Hair blades were used to add texture. After the hair was lifted around the face, beard, and head the leather was cemented to masonite with contact cement. Additional cuts made to add depth and character to the beard, mouth, nose, and eyes.

Sunday we continued the modeling and tweaking to add character to the carving. We were supposed to get to the finishing, but we had pretty much run out of gas, so decided to do it at home. Andy was the only one who had his far enough along to color it.

Next month we will have another workshop in which Andy will teach us how to make leather covered picture frames. They will be of proper size to house the wood spirits.

Norm Lynds





General's wood spirit



Paula's wood spirit



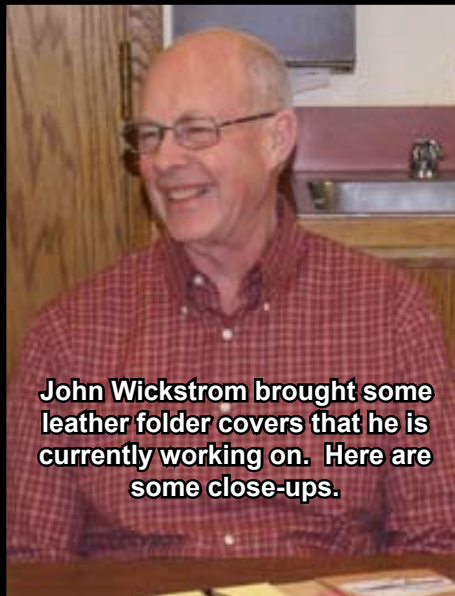
Norm's wood spirit

Wood Spirit Pictures



Paula's buffalo

The buffalo carving was made by Paula. General had brought the pattern back from Sheridan last year, then it appeared on the cover of this year's Tandy catalog.



John Wickstrom brought some leather folder covers that he is currently working on. Here are some close-ups.





Desert Leather Group February Meeting

John Hall, pictured at the right, brought in several items to show our group. Pictured here are several playing card cases for a family game that requires multiple decks. Nice, simple construction with colorful floral carvings.





Desert Leather Group February Meeting (cont.)

John Hall brought in a couple of Poinsettias made from vegetable tanned pig skin linings. The design was from a Tandy Skiver newsletter. At our next meeting, Carla will bring in the leather pattern for roses.

James Polson brought in an unfinished purse he is making for his wife. The pattern is a cut down pattern that has turned out well balanced in look. The color is not what he expected and has an orange-ish over tone to it.

James has learned many lessons from his first non-kit project. He will use thinner leather on the next project and punch the holes as he assembles to make the lacing smoother and help over the multiple join areas. He also says that all future dye projects will be tested on a scrap from the projects leather piece.

Bob Stelmack
Richland, WA



PSLAC North with Carol's Saddle in Process

Here are some photos of the February PSLAC North breakfast show and tell.

The saddle is one under construction by **Carol Gessel**. The customer requested black with a blue seat and trim. It is the first time she has worked with this combination. It looks fantastic.

The leather work of the brow bands was done by Carol and the crystal and metal work done by **Chenoa Haluptzok**.

Norm



The Bill Churchill Children's Leather Program 8th Annual AWARD Nomination Form for the Year 2009

PSLAC Mission is...

- To further the enjoyment of leather and to help others learn more about the real joy of leather - working as a group and sharing ideas and knowledge of leather, its uses and how to use it. To pass on this knowledge to others and then have them pass it on to the new members who come later.
- Form a fellowship with peers, young and old, expert and non-expert, anyone who has the love of leather.
- To show and demonstrate to people outside the Co-Op leather in all forms and try to help them to become interested in leather...to share...time and talent, with all others in the Co-Op -- especially the young.

The **Bill Churchill Children's Leather Program Award** is designed to recognize PSLAC members who are caring on those principles of the PSLAC mission.

Nominations can be made by any PSLAC member and should be in writing. This form can be used, or any other written method is acceptable.

The nominations should give reasons and examples why they feel the nominee should receive an award.

- How have they helped further the craft?
- Are they active in PSLAC activities?
- Do they help promote leather craft by fair entries, demonstrations, etc.
- Have they helped generate interest in others to pursue the craft.
- Are they willing to share knowledge for the benefit of all.

The PSLAC directors will make the decision for each year and the award will be a once in a person's lifetime. The award will include a medal similar to the Stohlman award with a replica of Bill's hands and his axiom: C.O.P.I.

(confidence–observation–practice–imagination).

Send your **nominations by April 30th** to:

PSLAC
c/o Barb Lourdes
PO Box 1144
Auburn
WA, 98071, USA
...or... email to: stelmack@nwlink.com

RULES:

1. The award may only be won once in a lifetime.
2. The Directors will evaluate the nominations and decide on a winner – one each year.
3. If one of the Directors is nominated, that Director will be replaced by another PSLAC member for the purposes of selecting a winning nomination.
4. The award will be give out at the summer PSLAC Annual Bar-B-Que.
5. Nominations will be due by April 30th.

**The Bill Churchill Children's Leather
Program
AWARD Nomination Form for the Year
2009**

(Give examples for each category):

▶ *How have they helped further the craft?*

▶ *Are they active in PSLAC activities?*

▶ *Do they help promote leather craft by fair entries,
demonstrations, etc.?*

▶ *Are they willing to share knowledge for the benefit of
all?*

***Previous Recipients of the Bill
Churchill Award:***

Woody Collins (2002)
Bob Stelmack (2003)
Dusty Wert (2004)
Ken Imus (2005)
Paula Marquis (2006)
General Seymour (2006
Special Recognition Award)
Dave Jensen (2007)
Jackie Holliday (2008)

Name of Nominator: _____

Date: _____

Upcoming Events

Western Washington (Seattle/Tacoma/Everett) PSLAC CURRENT SCHEDULE FOR 2009

- General Member's meetings are on the 2nd Sunday of each Month, (noon till 4.00p.m. approx.) unless specified below.
- Meetings held at Issaquah Valley Senior Center, 75 NE Creek Way, Issaquah. WA. 98027.
- February meetings are held at MacPherson's Leather, 519 12th St. S., Seattle WA.

Mini-Demos (Start at Noon) followed by the General Meeting (Starts at 2PM).

April 5th - (Week early due to Easter Sunday) - Finishing with John Wickstrom. More demo than work.

May 3rd - (Week early due to Mother's Day) - Bader Blade Demo with Andy Stasiak

June - BBQ Picnic, Garage Sale and Bill Churchill Award.

July - Summer Break / UFO Workshop / Meeting at Tandy, Seattle (Noon to 4/5p.m.)

August - Summer Break. No Meeting

September - Summer Break.

October -

November -

December -

All-Day Workshops.

April 25th - Leather Covered Frame with Andy Stasiak at Tandy in Seattle.

May 30th -

June 26th & 27th - (Friday and Saturday) Leather Folder design and make with John Wickstrom at General's home.

July 25th -

August - (early) - Bob Beard - Necklace, date to be confirmed. Three day workshop.

August - 29th & 30th - Making a box with Peter Main at Len's home.

September -

October 24th & 25th (Saturday & Sunday) - Making a pair of chaps - chinks with fringe - with Carol Gessel.

November, December - Workshops will be considered if there are enough subjects and requests.

Breakfast informal get-together locations:

North breakfast >>> Last Friday of the month at 10:00 AM at: Crossroads Restaurant, 1904 201st Pl. S.E., Bothel. WA.

South breakfast >>> The 3rd Saturday of the month at 8:30 AM at: Oscar's Restaurant, 8726 S. Hosmer St., Tacoma, WA, phone: (253) 548 2419

Upcoming Events (cont.)

Eastern Washington (Tri-Cities or Spokane) CURRENT SCHEDULE FOR 2009

Tri-Cities Desert Leathercraft Group (DLG) Member's meetings are on the 3rd Saturday of each Month, unless specified below.

- Informal meetings held at 2532 Banyon St., Richland, WA 99352 (call Bob at 509-392-2589 for directions). Google map reference: +46° 16' 19.20", -119° 18' 32.40"

FREE Leathercrafting Classes

Arrangements have been made to present a series of **Weekly Leathercrafting Classes**. Larry and Anni Stirling are making available a large section of their business office workshop to be used to teach leathercraft. The initial idea is similar to what the leather group in Spokane does, by teaching basics for those who want basics and to teach and share advance techniques for those who are interested.

We would start with a project (or bring your own) and the class would teach the basic tools, tool sharpening, casing, design transfer, swivel knife use, stamping, coloring, dying and finishing.

The classroom/workshop would be open from 5-8pm every Monday evening starting November 3rd at 1910 N 4th Ave next door to Blue Cross Animal Hospital (Stirling Imaging, Inc). There are no fees and no limits on class sizes. ALL are welcome and ALL levels of experience are expected. For more information call Ivan (521-1371) or Bob (392-2589).

Spokane PSLAC East Member's meetings are on the 2nd Saturday of each Month, unless specified below.

- Informal meetings are held at: the Spokane Tandy Leather Factory Store, 28 West Boone Ave., Spokane. WA 99201.

General Meeting, Demos and Workshops.

Now that summer is passing, we are starting up the **Tandy Leather Factory** classes again. The schedule is the same with a few small changes:

1. It is still held on the **2nd Saturday of every month**
2. We are splitting the day into 2 sessions. The first session will be from 10 Am to Noon and the second session will be from 1 PM to whenever everyone gets tired. Feel free to attend either or both sessions and please bring your ideas, wants and/or needs so we can have classes that will be of a benefit to all of you.

PSLAC Members Only Advertisement Page

Any PSLAC Member can advertise leather related products or services, subject to approval. Just send your text, picture and/or logo to stelmack@nwlinc.com



MARQUIS UNIQUE LEATHER ARTISTRY, LLC

I make almost anything that can be made from leather and can be sewn by hand. A lot of my works are 'bespoke items', meaning, one of, individual custom requests, ranging anywhere from books and folders to rifle scabbards, holsters and golf bags, fully carved and stamped, and any and all articles in between, which also includes moulded bowls and pictures.

Phone: (206)-523-6295

Email: marquispg@aol.com

www.marquisuniqueleather.com



Black Horse Leatherworks & Saddlery specializes in high quality & unique custom western tack and apparel. We make some English items such as Schooling chaps & Stall items. We make all our leather items one at a time, by hand per our clients specifications. All items are custom fit with an endless array of options to choose from. Each is a small piece of "working art". We make all our items here in our own shop - nothing is sent out. This helps us maintain our high standard of quality that our customers have come to expect from us. Custom silver items are available for your tack and apparel needs in addition to our lines of fine silver shown in the website. We also offer Garcia bits & spurs and bits & spurs from Sleister.

C.E. Gessell, Owner

Our Motto: If you can imagine it... we can create it!

Leather Big Book Covers
www.leatherbigbookcovers.com
by **Bob Stelmack**



DIAMOND P LEATHER SHOP PHIL O'NEILL

Saddlery: New, Used-Repair
Custom Made Leather Goods
25051 - 180 Ave SE, Kent WA 98042
Hours By Appointment Or By Chance
(252) 631-9770

This Is A One-Man Outfit
All Custom & Repairs Are Crafted By Myself
Email: wsubarbara@gmail.com

Custom Maker Stamps Grey Ghost Graphics By Jeff Mosby

Custom maker stamps, laser cut acrylic templates and custom tapoffs for the leather craft field. Custom cut from your artwork at reasonable rates!

P.O. Box 30268, Myrtle Beach, SC 29588
(866) 205-9810 or (843) 903-4788

www.greyghostgraphics.com



Norm Lynds Toolmaker

Mallets, Modelers, embossing tools, lifters and others on request

Phone: (425) 357-1001

E-mail: sagerat2003@yahoo.com

Leather Company Advertisement Page

Support our sponsors and take advantage of the PSLAC Membership Discounts...



Offering Members wholesale club discount to PSLAC members

The Leather Factory #21 PORTLAND
Toll Free: 888-277-3360
13221 NE Whitaker Way Portland, OR 97230

Tandy Leather #126 SEATTLE
Toll Free: 866-220-9698
14713 Aurora Ave N Seattle, WA 98133

The Leather Factory #09 SPOKANE
Toll Free: 800-822-8437
28 W Boone Ave Spokane, WA 99201

Tandy Leather #124 TACOMA
Toll Free: 888-222-0510
13819-C Pacific Ave South Tacoma, WA 98444

FERDCO



In the US - Contact FerdcO Toll Free
@ 1-800-645-0197
International - 1-208-689-3006
Fax - 1-208-689-3008
E-mail - ferdcO@smgazette.com

Offering a discount to the PSLAC members of a 10% off of any parts and supplies ordered and 2% off of any equipment (sewing machines ,etc.)



Toll Free:
(800) 541-3264
**Bee Natural
Leather-
care**
*The ultimate in
leather care prod-
ucts*

P.O. Box 820803, Vancouver, WA. 98682-0018
(360) 891-7178 , FAX: (360) 891-7166
Email: bnatura@pacifier.com

Outside Washington
1-800-343-9949

(206) 328-0855
Fax: 328-0859

MACPHERSON

Leather Company

Leather, Shoe Finding and Saddlery

Offering a 30-40% off retail discount to the PSLAC members

519 - 12th Avenue S.
Seattle, Washington 98144

GLOBAL LEATHERS



Web site: www.globalleathers.com
Telephone : 212-244-5190
Fax : 212-594-7515
e-mail: globalleathers@usa.net
Paul Crystal

Offering a discount to PSLAC members

BRETTUNS VILLAGE LEATHER

Selling odd lots, miscellaneous overstocks,
bargain leathers and leathercraft
accessories, all from Maine, only online

Sides, Full Hides, Buckles, Key Rings, Laces, Thread,
Tools, Rivets, Scrap Pieces, Elk & Buffalo Scrap

Always Free Shipping in the 48 States

www.brettunsvillage.com

Steve Derricott



Twister D Products
301 E. Bower St.
Meridian, Idaho 83742
(208) 884-3766 - Fax (208) 884-3767
A Division of Gfeller Casemakers, Inc.
www.lacemaster.com

Offering a 10% discount to the PSLAC members

Leather, Suede, Skins, Inc.



261 West 35th Street
11th Floor, New York, NY 10001
Tel: (212) 967-6616
Fax: (212) 564-5759
www.leathersuedeskins.com
Email: leather.suede.skis@att.net

Offering a 10% discount to the PSLAC members



Dusty Johnson

PLEASANT VALLEY SADDLE SHOP
1220 S. County Rd. 21
Loveland, CO 80537
Phone: (970) 669-1588
Fax: (970) 669-1589
E-Mail: dusty@pvsaddleshop.com
URL: <http://www.pvsaddleshop.com>

Offering a 20% discount to the PSLAC members

RawHide Gazette

Editor / Publisher: Bob Stelmack
Co-Founders: Bill Churchill & General Seymour
Treasurer/Secretary: Barbara Lourdes

The RawHide Gazette is published monthly (12 times a year). Address for information and correspondence: PSLAC, c/o Barbara Lourdes, PO Box 1144, Auburn, WA, 98071, USA, Email: billing@pslac.org

The RawHide Gazette is provided to the Puget Sound Leather Artisans Co-Op as a part of their membership benefits. Annual dues are \$24.00 USD per year.

All submissions are subject to editing for clarity and length. All articles submitted must be accompanied by name, address and permission of writer.

Advertising Rates

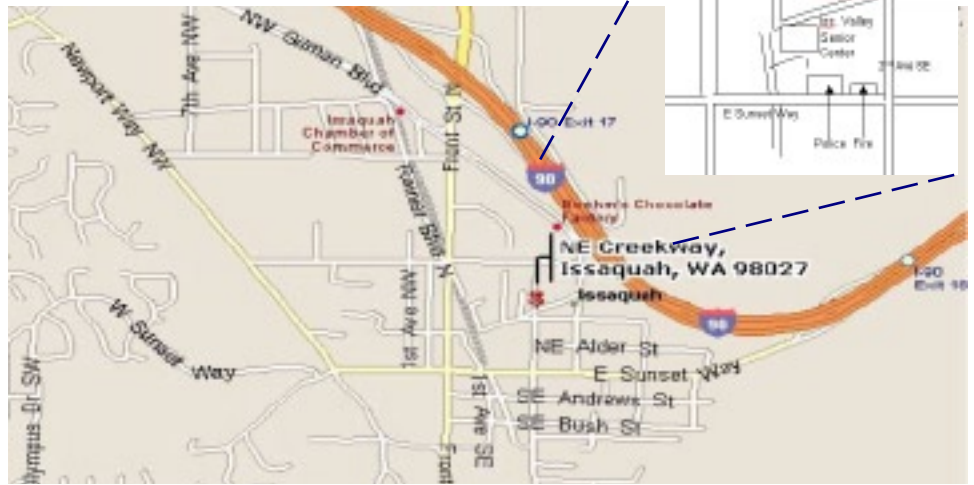
The RawHide Gazette now offers advertising space to interested parties. Ad spaces are as follows:

- 1/4 Page or Business Card\$60 USD
- 1/2 Page\$110 USD
- 1 Full Page\$200 USD

These rates cover a six month time period. PSLAC members are entitled to a 25% discount. Leather companies supporting PSLAC are given free Business Card size advertisement, additional space at regular rates.

The Puget Sound Leather Artisans Co-Op can be found at:

<http://pslac.org>



Taking I-90

From Auburn: come north on Hwy167, or I-5, then I-405 north, then onto I-90, going east:

From Everett: South on I-5 to 405 South, or to I-90, going east:

From I-90 get off on exit 17/Front St., and bear right onto Front Street. At the third stoplight, turn left onto E Sunset Way, then see below:

Taking Hwy 18 from around Auburn to Issaquah

Get on Hwy 18 going East, from Auburn, it's about 12 miles to Maple Valley, then at about 2 ½ miles after Maple Valley, look for the turn off to Issaquah Hobart Rd SE, turn onto ramp 276th Ave SE and go 0.6 miles, bear left onto Issaquah Hobart Rd SE. It's about 8 ½ miles from there to Issaquah.

Hobart becomes Front Street S, which takes you into downtown Issaquah. Turn right onto E Sunset Way, then see below:

After turning onto E Sunset Way:

go two blocks (past the Police and Fire Stations), turn left onto 2nd Ave SE, go past the old Senior Center building on your left, and a baseball field, then left onto NE Creekway, go almost to the railroad tracks. The new Issaquah Valley Senior Center is a brick building on your left, parking in front of it. There is also parking behind, from Sunset, turn left into the parking area, right before the Police Station (look for a large parking sign on your left), and follow it till you see a kids play ground. **Address: 75 NE Creekway, Issaquah, WA 98027**

PSLAC
c/o Barbara Lourdes
PO Box 1144
Auburn, WA 98071
USA

