

Raw Hide Gazette

Copyright © 2009 by PSLAC, All Rights Reserved

"Without question, the *Raw Hide Gazette* is by far the best and most informative and comprehensive Guild publications of all of them! You are to be commended for your very fine and professional efforts. Keep up the good work. With admiration"
/signed/
Al & Ann Stohman, December 1997

Hide Highlights

Page

- 1 Puyallup Fair
- 2 Deschutes County Fair & Rodeo
- 3 Deschutes County Fair 4-H Leathercraft Samples
- 4 Some Late Comments from the Deschutes County Readers
- 4 Information for 4H Leaders from Ken Bush
- 5 Newport, WA Lavender Festival
- 6 Benewah County 4H
- 7 Leather Art in Argentina
- 9 Herb's Cases
- 9 Pruning Shear Case
- 9 Tandy Leather Factory Imprinting
- 10 Homemade Book Press
- 11 Upcoming Events
- 12 Upcoming Events (cont.)



SEPT. 11-27

Puyallup Fair

The Puyallup Fair is quickly coming up. Here are some details and dates to get your project entered:

Entry dates for this Division are Friday, August 28, between the hours of 9 am and 4 pm, on Saturday, August 29 between the hours of 9 am and 4 pm, or on Sunday, August 30 between the hours of noon and 6 pm. Entry forms will be filled out at the time of entry.

Division C: Leather Craft

You may drive to the Hobby Hall through the Service Gate at 5th Street SW (off 15th Avenue SW) on all three entry days, or you may walk through the Gold Gate entrance off Meridian Street S / 9th Avenue SW.

Return dates are Tuesday, September 29, 9 am to 8 pm, and Wednesday, September 30, 9 am to 6 pm.

Please read the General Rules on page 1 and 2 and Hobby Hall Entries rules on pages 5-6 (<http://www.thefair.com/site-information/page/how-to-participate/exhibit-entries/>).

Meeting Announcement

NEXT MEETING

September 2009

**Summer Break
NO MEETING UNTIL
SEPTEMBER**

If you have **WON** the Grand Champion in this division within the last five years, you must compete in the Teacher/Professional Division.

All articles must be the handwork of the exhibitor and finished within the last two years.

The "OTHER" class will only be used if the item does not fit within any other class in this division.

Entries will be judged for design, technique, and overall appearance.

No pairs or sets accepted.

ADDITIONAL AWARDS:

Grand Champion – Adult – Purple Rosette, plus \$100 premium Reserve Grand Champion – Adult – Lavender Rosette plus \$25 premium Grand Champion – Junior – Purple Rosette, plus \$50 Premium In addition, the Junior Grand Champion will receive a \$50 Gift Certificate from the PSLAC Reserve Grand Champion – Junior – Lavender Rosette plus \$25 premium

In addition the Junior Reserve Grand Champion will receive a \$30 Gift Certificate from the PSLAC

JUNIORS (Under 16 years of age) NO CLASS PROJECTS!

Class 1st 2nd
1800 PICTURES
1805 HOUSEHOLD ITEMS
1810 POCKET ITEMS
1815 WALLETS
1820 BELTS
1822 NATIVE AMERICAN STYLE ITEMS
1825 OTHER ITEMS

ADULTS (16 years of age and older) Class 1st 2nd

1850 PICTURES
1855 TOOLED SPORTSMAN CARRIERS
1860 TOOLED CARRYING CASES
1865 TOOLED HANDBAGS
1870 TOOLED POCKET ITEMS
1875 ALBUMS, SCRAPBOOKS
1880 WALLETS
1885 BELTS

1890 HOUSEHOLD ITEMS
1895 STAMPED ITEMS
1900 JEWELRY
1905 WEARING APPAREL
1910 UNTOOLED ITEMS
1915 BRAIDING
1918 NATIVE AMERICAN STYLE ITEMS
1920 OTHER LEATHERCRAFT

**Division CC :
Leather Craft,
Teachers and Professionals
Grand Champion –
Purple Rosette, plus \$100 premium
Reserve Grand Champion –
Lavender Rosette plus \$25 premium
Class 1st 2nd**

1950 PICTURES
1955 LARGE TOOLED ARTICLE
1960 SMALL TOOLED ARTICLE
1965 LEATHER WITH OTHER MEDIUM
1970 WEARING APPAREL
1975 UNTOOLED ARTICLES
1977 NATIVE AMERICAN STYLE ITEMS



Deschutes County Fair & Rodeo

While visiting with Karen's Daughter, Melissa, we were treated to a visit to the Deschutes County Fair & Rodeo where the 4-H organization had a small display of 4-H Leathercraft. Included here are some pictures of the leather work.

**Bob & Karen Stelmack
Richland, WA**





**Deschutes County Fair 4-H
Leathercraft Samples**



....and the kids playing in a “corn” box. It’s like a sand box only it is filed with corn kernels.

Some Late Comments from the Deschutes County Readers

Hi! Thanks for the newsletter. Just a side note. I joined this group because my daughter had become active in **4H leathercraft**; lo and behold, it was the group you featured in the pictures from Deschutes County. **You published a picture of her coaster.** I wanted you to know that these kids were **new to leathercraft this year!** Many of them will be going to the **Oregon State Fair.** Kudos to their leaders, **Tom and Sheryl** for all the hours and effort!

Mary

...and...

Just a note that all the pictures of the individual items were by first year kids. The first one is a first ever project by a girl that did not even make all the meetings. The second and third are 1st and 3rd ever projects by a very talented girl. The last coaster with the horse head, is the last of a set so it is the best, and she is also a first time leather crafter. She did not get as much help as I wanted to give her so it is all mostly her work. We did teach and so they did do some tooling, but they are all still first time projects other than practice. We did put in extra time supervising most of the entries but the kids did all the work

Two of the pictured projects were from kits, but I bet you could not tell the purse was cut out from one of our patterns.

And while it was a small display it is much improved over the 3 items last year. **It represents the work of 11 kids from 3rd grade to 10th grade with most in the 8th grade.** The Oregon State Fair only had 54 items last year with one from our county. This year we will have over 10 items from Deschutes as every member qualified for State Fair. Also to give you an idea of how big leather is at the Oregon State Fair, they do not even have an open exhibit class for it. When I contacted them to see if I missed it they said they dropped it for lack of interest. I have **Donna** at the **Portland Leather Factory** on it now. So 54 items for 4-H is big.

Please put an article in about how kids want to learn leathercraft. They are all bugging us to know when the next meeting is and all have big plans for next years projects. This was Sheryl's and my first year with

any exposure to 4-H. We are new leaders and of the 11 members only 2 have been in a 4-H leather craft club before. All of the other 9 had no prior leather experience. It has been a wild year trying to figure out 4-H and how to teach kids. Unfortunately Oregon has no leathercraft program other than a simple book. We have had to go to other states for help as well as the knowledge we have gained over the years.

Again great to see us make the Gazette and nice article.

By the way you did make one of our members day as they are the ones that sent it to us. She did the coaster.

Tom & Sheryl

Information for 4H Leaders from Ken Bush

Ken provided a CD with information to help 4H Leathercraft Leaders. The contents are located at:

www.pslac.org/kootenai_cd.htm

Introduction

introduction.zip

Artists

bob_beard.zip
cathy_schlim_biography.doc
chan_geer.zip
dave_howell.zip
jackie_holliday.zip
jim_Linnell_biography.doc
ken_bush.zip
verlane_desgrange.zip
verlane_remembrances.doc
verlane_goodbye.doc

Hints and Other Useful tips

hints_and_tips.zip

Leaders How To Project

how_to_project.zip
kids_projects.pdf

Resources

resources.zip

Unit 1

unit1.zip

Unit 2

unit2.zip

Unit 3

unit3.zip

Unit 4

unit4.zip

Unit 5

unit5.zip

Unit 6

unit6.zip

As a further note on the How To project, when you open the zip file you will see two sets of files, one headed **JL** and one headed **KB**.

The **JL files** are **Jim Linnell's "How To" Project** which is a tooled folder containing instructions on how to tool leather from start to finish. The JL files contain the tool list, pattern for tooling and the actual page inserts that you will put in the finished folder. Each insert contain 2 pages so you will have to cut them in half and punch holes in the upper right corner before insertion. I found card stock for computer printers at Staples that works perfectly for the inserts.

The **KB files** are my digitized instructions for doing the project. Our presentations were hands on as each 4H leader created their own folder. As we presented the project to various 4H groups we found that the same questions came up time and again so the KB files were our attempt to make it easier for the leaders to teach their kids. There is a single page of instructions referencing three pages which visually show each tooling step, a symbol of the tool being used and how and where to do the tooling. We found that by handing out the printed instructions to each 4H leader we could keep everyone in sync as they tooled the folder. One of our group (usually **Woody Collins**) would do the actual presentation and the others in our group (**Jackie Holliday, Stan McConnell** and myself) would move among the leaders answering any questions they had and showing them on the pages where they could find answers to their questions. We gave each leader a kit containing a precut piece of leather for the actual folder, the pre printed and punched page inserts on card stock, the printed tooling instructions and a copy of the CD so they in turn could print out additional instructions for their kids. It was a win win situation for all of us.

We consider this project a living project so if you have any questions or suggestions of things to modify/add, please feel free to contact me.

Thanks to **Jim Linnell** for making this possible and **Bob Stelmack** for helping make this available.

Ken Bush (e-mail: whiterosex@aol.com)
11923 E. Fairview Ave
Spokane Valley, WA 99206

Newport, WA Lavender Festival

Woody Collins and I attended the Newport WA Lavender Festival again this year. The show organization was top notch as usual and they provided some really great music and entertainment. However, the economy really hit hard as we had about the same number of sales as last year but the average sale was about 40% of last year's average. Not complaining here because we did make a small profit when several booths had no sales at all. It was our lower priced items that came to the rescue.

Picture 1: Our booth.

Picture 2: Woody getting ready to demonstrate tooling to unsuspecting customers.

Picture 3: Elf Troubadour roaming through the crowd.

Picture 4: Really great Blues and soft Jazz band.



Ken Bush

White Rose Leather
11923 E. Fairview Ave.
Spokane Valley, WA
99206

whiterosex@aol.com
509.926.2087



Benewah County 4H

The Benewah County 4H invited **Stan McConnell** and I to teach leathercraft at St Maries, ID on July 17.. This was for their Summer Kids Activity day.

Before Stan and I left for St Maries, we stopped by **Mario and Sons** in the **Spokane Valley**. Mario's makes marble counter tops so we got them to donate some of their sink cutouts for tooling stones. When the class was over, each kid got to take their stone home with them. **Many thanks to sponsors like this.**

With 3 hours allocated to the class, we tried something new instead of just jumping in with our usual tooling routine. **Cheryl Utley** of the **Spokane Tandy Leather Factory** had donated some leather ovals for the class so I had the kids make a very simple key ring. It involved nothing more than punching a hole in one end of the leather oval and stamping their initials on it. They then stamped a border around their initials and with the addition of some antiquing, tan kote and a split ring, each kid had something they completed successfully. This gave them a sense of accomplishment and also gave us the freedom to begin teaching tooling without worrying about whether we would finish on time. Stan then took over the class showing them how to tool a flower taken from one **Peter Main's** craft aids.

Picture 1: Stan watching a young exchange student from Costa Rica stamping her initials. Between Stan knowing a little bit of Spanish and she knowing enough English, we got the job done. Also notice the stones we got from Mario and Sons, they were just the right size for the

class.

Picture 2: The kids with their completed key rings



Picture 4: Stan demonstrating tooling the flower.



Picture 3: I turned this young man's frown to a smile when I explained that Chan Geer says there are no mistakes, just happy learning experiences.



Picture 5: Some of the parents dropped by to see how things were going.



Picture 6: More parents.

My apologies for the nameless pictures, we were so busy, we forgot to get names..

Ken Bush

Leather Art in Argentina

I would like to show some of my latest artistic creations. My name is **Roberto Pablo de la Fuente** and I was born in 1956 in Salto, Argentina. At this moment I live in Gahan, a small village of the province of Buenos Aires, after travelling and living in several countries of Latin America and Europe.

My profession is educational psychologist and the autodidactical studies of light, space and time, the quantum physics, brain functions and the epistemology have conducted me to a multi-dimensional expression in both plastic as written arts.

The results of the here above mentioned studies have been concluded in an aesthetical expression of scarving technics into leather, which can be defined as the using of little contrasts produced by micro-reliefs of the leather. In my creations I express the conceptual and symbolic multiplicity of simultaneous phenomena which only can be observed in distinctive moments.

Some of my works of art are in private collections in Argentina, Mexico, the Netherlands and France.

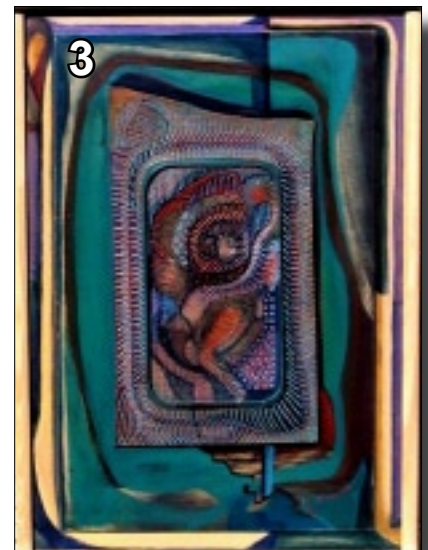
Hereby I send you some pictures of my most recent creations. In case you were interested, you may contact me writing to this e-mail address: ellenlie@yahoo.com.

Yours faithfully,

Roberto Pablo de la Fuente
Gahan (Argentina), July 2009

List of artwork:

1. centrum (2009)
Material/technique: acrylic, leather and triplex.
Size: 80x115
2. el caballero de los leones - Knight of the lions (2009)
Material/technique: acrylic, leather and triplex.
Size: 60x120
3. flor danzante -dancing flower (2008)
Material/technique: acrylic, leather and triplex.
Size: 70x50
4. la chose (2009)



Material/technique: acrylic, leather and triplex.
Size: 55x110

5. retrato de un reflejo - portrait of reflection (2009)
Material/technique: acrylic and triplex.
Size: 70x50



6. simultaneidad dimensional -dimensional simultaneity (2008)
Material/technique: acrylic, leather and triplex.
Size: 65x45

7. tres espejos - three mirrors (2009)
Material/technique: acrylic, leather and triplex.
Size: 60x120



8. uno - one (2008)
Material/technique: acrylic, leather and triplex.
Size: 70x50



9. ventana - window (2008)
Material/technique: acrylic, leather and triplex.
Size: 60x40



Herb's Cases

Here's a pepper spray case I just finished and a hatchet cover made PDQ (Pretty Damn Quick) for a guy that was in a hurry. Could have done better, but not bad for the time that I had.

Herb Rockey



Pruning Shear Case

I just finished this pruning shear case. Made from **McDonald and Muir Leather**. Sweet. I've never worked with such nice leather.

Herb Rockey

Tandy Leather Factory Imprinting

This is what I've been up to. I finally bit the bullet and bought the "Imprinting" machine from **Tandy**. Works well. Is this something we would want to take to the fair (no more banging the table)?

Note the crooked hole on the belt. Couldn't believe I did that as badly as I did. Oh well. It was out of double shoulders I got from **Carla Irving** from the **Portland Tandy Store**. Nice leather.

Herb Rockey



Homemade Book Press

I find a book press quite a handy leather working tool. It is essential when binding books in leather, but I find it useful in so many other ways.

I use it to glue, fold and set turn back edges; to emboss lettering into leather using letter-press movable lead type; to emboss plates that Jeff Mosby, **Grey Ghost Graphics** makes for me.

I have two antique book presses. One is kept in the house (the pretty one) and one is in the garage.

Since the antique book presses are getting harder to purchase and getting to be \$500 and more for a good functional unit, I am trying to make one and see how that works out. My first attempt has started with a catalog from **Grizzly Industrial®**, Inc., the H5510 Shop Fox® Deluxe Press Clamp. Here is what the catalog says:

- The cast iron Super Press Clamp generates tremendous pressure for veneering, gluing, book binding and any other press type requirement
- Features double handles for maximum torque, 1" diameter screw and 3" diameter clamp pad
- Eight mounting holes provide secure attachment to a workbench or clamping fixture
- Capacity under the clamp is 6" high by 18" wide
- Weighs 28 lbs.

My son-in-law **Matt Ringer** has volunteered to cut two plates of steel to be used as the base and the pressure plate. Pictures and assembly details in a future issue.

Bob Stelmack

Richland, WA



<http://grizzly.com/products/Shop-Fox-Deluxe-Press-Clamp/H5510>

\$59.95



Upcoming Events

Western Washington (Seattle/Tacoma/Everett) PSLAC CURRENT SCHEDULE FOR 2009

- General Member's meetings are on the 2nd Sunday of each Month, (noon till 4.00p.m. approx.) unless specified below.
- Meetings held at Issaquah Valley Senior Center, 75 NE Creek Way, Issaquah. WA. 98027.
- February meetings are held at MacPherson's Leather, 519 12th St. S., Seattle WA.

Mini-Demos (Start at Noon) followed by the General Meeting (Starts at 2PM).

August - Summer Break. No Meeting

September - Skiving with Andy Stasiak.

October -

November -

December -

All-Day Workshops.

August 29th & 30th - Making a box with Peter Main at Len's home.

September - Rolled Edges and Sewing with Paula Marquis at Len's home.

October 24th & 25th (Saturday & Sunday) - Making a pair of chaps - chinks with fringe - with Carol Gessel.

November, December - Workshops will be considered if there are enough subjects and requests.

Breakfast informal get-together locations:

North breakfast >>> Last Friday of the month at 10:00 AM at: Crossroads Restaurant, 1904 201st Pl. S.E., Bothel. WA.

South breakfast >>> The 3rd Saturday of the month at 8:30 AM at: Oscar's Restaurant, 8726 S. Hosmer St., Tacoma, WA, phone: (253) 548 2419

Upcoming Events (cont.)

Eastern Washington (Tri-Cities or Spokane) CURRENT SCHEDULE FOR 2009

Tri-Cities Desert Leathercraft Group (DLG) Member's meetings are on the 3rd Saturday of each Month, unless specified below.

- Informal meetings held at 2532 Banyon St., Richland, WA 99352 (call Bob at 509-392-2589 for directions). Google map reference: +46° 16' 19.20", -119° 18' 32.40"

FREE Leathercrafting Classes (CLASSES ON HOLD FOR THE SUMMER)

Arrangements have been made to present a series of **Weekly Leathercrafting Classes**. Larry and Anni Stirling are making available a large section of their business office workshop to be used to teach leathercraft. The initial idea is similar to what the leather group in Spokane does, by teaching basics for those who want basics and to teach and share advance techniques for those who are interested.

We would start with a project (or bring your own) and the class would teach the basic tools, tool sharpening, casing, design transfer, swivel knife use, stamping, coloring, dying and finishing.

The classroom/workshop would be open from 5-8pm every Monday evening starting November 3rd at 1910 N 4th Ave next door to Blue Cross Animal Hospital (Stirling Imaging, Inc). There are no fees and no limits on class sizes. ALL are welcome and ALL levels of experience are expected. For more information call Ivan (521-1371) or Bob (392-2589).

Spokane PSLAC East Member's meetings are on the 2nd Saturday of each Month, unless specified below.

- Informal meetings are held at: the Spokane Tandy Leather Factory Store, 28 West Boone Ave., Spokane. WA 99201.

General Meeting, Demos and Workshops.

Now that summer is passing, we are starting up the **Tandy Leather Factory** classes again. The schedule is the same with a few small changes:

1. It is still held on the **2nd Saturday of every month**
2. We are splitting the day into 2 sessions. The first session will be from 10 Am to Noon and the second session will be from 1 PM to whenever everyone gets tired. Feel free to attend either or both sessions and please bring your ideas, wants and/or needs so we can have classes that will be of a benefit to all of you.

PSLAC Members Only Advertisement Page

Any PSLAC Member can advertise leather related products or services, subject to approval. Just send your text, picture and/or logo to stelmack@nwlinc.com



MARQUIS UNIQUE LEATHER ARTISTRY, LLC

I make almost anything that can be made from leather and can be sewn by hand. A lot of my works are 'bespoke items', meaning, one of, individual custom requests, ranging anywhere from books and folders to rifle scabbards, holsters and golf bags, fully carved and stamped, and any and all articles in between, which also includes moulded bowls and pictures.

Phone: (206)-523-6295

Email: marquispg@aol.com

www.marquisuniqueleather.com



Black Horse Leatherworks & Saddlery specializes in high quality & unique custom western tack and apparel. We make some English items such as Schooling chaps & Stall items. We make all our leather items one at a time, by hand per our clients specifications.

C.E. Gessell, Owner

Our Motto: If you can imagine it... we can create it!

Motorized Fantastic Leather Burnisher. Cuts Time 80%

<http://tinyurl.com/lfc4lc>

*Chaps & More
by Ivan Sampson*

<http://tinyurl.com/mjtc57>



DIAMOND P LEATHER SHOP PHIL O'NEILL

Saddlery: New, Used-Repair
Custom Made Leather Goods
25051 - 180 Ave SE, Kent WA 98042
Hours By Appointment Or By Chance
(253) 631-9770

This Is A One-Man Outfit
All Custom & Repairs Are Crafted By Myself
Email: wsubarbara@gmail.com

Custom Maker Stamps Grey Ghost Graphics By Jeff Mosby

Custom maker stamps, laser cut acrylic templates and custom tapoffs for the leather craft field. Custom cut from your artwork at reasonable rates!

P.O. Box 30268, Myrtle Beach, SC 29588
(866) 205-9810 or (843) 903-4788

www.greyghostgraphics.com



Norm Lynds, Toolmaker

Mallets, Modelers, embossing tools, lifters and others on request

Phone: (425) 357-1001

E-mail: sagerat2003@yahoo.com

Leather Big Book Covers www.leatherbigbookcovers.com by Bob Stelmack

Leather Company Advertisement Page

Support our sponsors and take advantage of the PSLAC Membership Discounts...



Offering Members wholesale club discount to PSLAC members

The Leather Factory #21 PORTLAND
Toll Free: 888-277-3360
13221 NE Whitaker Way Portland, OR 97230

Tandy Leather #126 SEATTLE
Toll Free: 866-220-9698
14713 Aurora Ave N Seattle, WA 98133

The Leather Factory #09 SPOKANE
Toll Free: 800-822-8437
28 W Boone Ave Spokane, WA 99201

Tandy Leather #124 TACOMA
Toll Free: 888-222-0510
13819-C Pacific Ave South Tacoma, WA 98444

FERDCO



In the US - Contact Ferdco Toll Free
@ 1-800-645-0197
International - 1-208-689-3006
Fax - 1-208-689-3008
E-mail - ferdco@smgazette.com

Offering a discount to the PSLAC members of a 10% off of any parts and supplies ordered and 2% off of any equipment (sewing machines ,etc.)



Toll Free:
(800) 541-3264
**Bee Natural
Leather-
care**
*The ultimate in
leather care prod-
ucts*

P.O. Box 820803, Vancouver, WA. 98682-0018
(360) 891-7178 , FAX: (360) 891-7166
Email: bnatura@pacifier.com

Outside Washington
1-800-343-9949

(206) 328-0855
Fax: 328-0859

MACPHERSON

Leather Company

Leather, Shoe Finding and Saddlery

Offering a 30-40% off retail discount to the PSLAC members

519 - 12th Avenue S.
Seattle, Washington 98144

GLOBAL LEATHERS



Web site: www.globalleathers.com
Telephone : 212-244-5190
Fax : 212-594-7515
e-mail: globalleathers@usa.net
Paul Crystal

Offering a discount to PSLAC members

BRETTUNS VILLAGE LEATHER

Selling odd lots, miscellaneous overstocks,
bargain leathers and leathercraft
accessories, all from Maine, only online

Sides, Full Hides, Buckles, Key Rings, Laces, Thread,
Tools, Rivets, Scrap Pieces, Elk & Buffalo Scrap

Always Free Shipping in the 48 States

www.brettunsvillage.com

Steve Derricott



Twister D Products
301 E. Bower St.
Meridian, Idaho 83742
(208) 884-3766 - Fax (208) 884-3767
A Division of Gfeller Casemakers, Inc.
www.lacemaster.com

Offering a 10% discount to the PSLAC members

Leather, Suede, Skins, Inc.



261 West 35th Street
11th Floor, New York, NY 10001
Tel: (212) 967-6616
Fax: (212) 564-5759
www.leathersuedeskins.com
Email: leather.suede.skis@att.net

Offering a 10% discount to the PSLAC members



Dusty Johnson

PLEASANT VALLEY SADDLE SHOP
1220 S. County Rd. 21
Loveland, CO 80537
Phone: (970) 669-1588
Fax: (970) 669-1589
E-Mail: dusty@pvsaddleshop.com
URL: <http://www.pvsaddleshop.com>

Offering a 20% discount to the PSLAC members

This page left intentionally blank

RawHide Gazette

Editor / Publisher: Bob Stelmack
Co-Founders: Bill Churchill & General Seymour
Treasurer/Secretary: Barbara Lourdes

The RawHide Gazette is published monthly (12 times a year). Address for information and correspondence: PSLAC, c/o Barbara Lourdes, PO Box 1144, Auburn, WA, 98071, USA, Email: billing@pslac.org

The RawHide Gazette is provided to the Puget Sound Leather Artisans Co-Op as a part of their membership benefits. Annual dues are \$24.00 USD per year.

All submissions are subject to editing for clarity and length. All articles submitted must be accompanied by name, address and permission of writer.

Advertising Rates

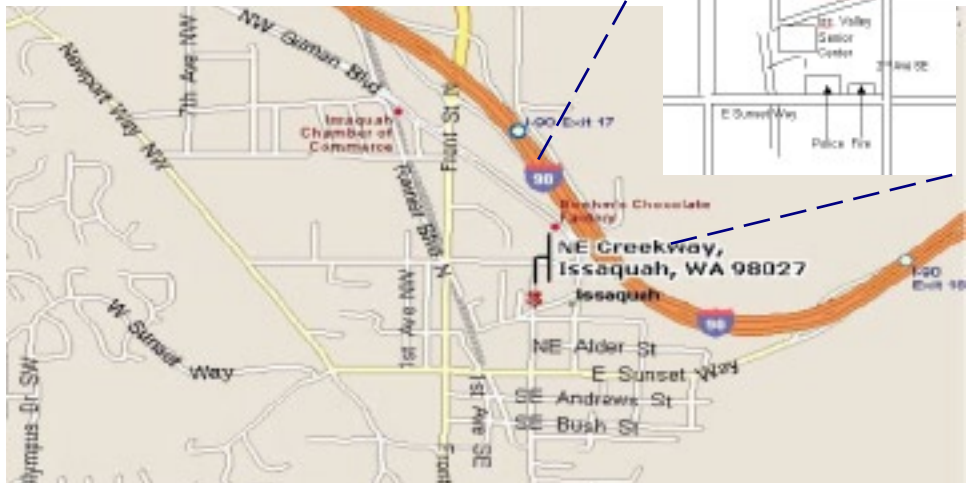
The RawHide Gazette now offers advertising space to interested parties. Ad spaces are as follows:

- 1/4 Page or Business Card\$60 USD
- 1/2 Page\$110 USD
- 1 Full Page\$200 USD

These rates cover a six month time period. PSLAC members are entitled to a 25% discount. Leather companies supporting PSLAC are given free Business Card size advertisement, additional space at regular rates.

The Puget Sound Leather Artisans Co-Op can be found at:

<http://pslac.org>



Taking I-90

From Auburn: come north on Hwy167, or I-5, then I-405 north, then onto I-90, going east:

From Everett: South on I-5 to 405 South, or to I-90, going east:

From I-90 get off on exit 17/Front St., and bear right onto Front Street. At the third stoplight, turn left onto E Sunset Way, then see below:

Taking Hwy 18 from around Auburn to Issaquah

Get on Hwy 18 going East, from Auburn, it's about 12 miles to Maple Valley, then at about 2 ½ miles after Maple Valley, look for the turn off to Issaquah Hobart Rd SE, turn onto ramp 276th Ave SE and go 0.6 miles, bear left onto Issaquah Hobart Rd SE. It's about 8 ½ miles from there to Issaquah.

Hobart becomes Front Street S, which takes you into downtown Issaquah. Turn right onto E Sunset Way, then see below:

After turning onto E Sunset Way:

go two blocks (past the Police and Fire Stations), turn left onto 2nd Ave SE, go past the old Senior Center building on your left, and a baseball field, then left onto NE Creekway, go almost to the railroad tracks. The new Issaquah Valley Senior Center is a brick building on your left, parking in front of it. There is also parking behind, from Sunset, turn left into the parking area, right before the Police Station (look for a large parking sign on your left), and follow it till you see a kids play ground. **Address: 75 NE Creekway, Issaquah, WA 98027**

PSLAC
c/o Barbara Lourdes
PO Box 1144
Auburn, WA 98071
USA

