

# RawHide Gazette

"Without question, the RawHide Gazette is by far the best and most informative and comprehensive Guild publications of all of them! You are to be commended for your very fine and professional efforts. Keep up the good work. With admiration"  
/signed/  
Al & Ann Stohman, December 1997

Copyright © 2011 by PSLAC, All Rights Reserved

Puget Sound Leather Artisans Co-Op

June-October 2011

## Hide Highlights

### Page

- 1 Bill Churchill Awardee—  
Norm Lynds
- 2 July UFO
- 3 TLF Press Release
- 4 Editorial
- 5 Lavender Festival and  
Spokane Gun Show
- 6 Boy Scout Green River  
Camporee
- 7 & 8 Chan Geer Class—  
Rathdrum, Idaho
- 9 PSLAC in Homer Alaska
- 9 & 10 Misc. Pictures, May  
Meeting, Belt Contest...
- 11 & 12 Schedules
- 13 Fiskars Precision Knives

## Bill Churchill Award for 2011 Norm Lynds



A PSLAC member once described Norm Lynds as “One of the most helpful, friendly, all around nice guy” they had ever met. I’d have to agree.

Norm is probably best known for the tools he makes, elegant Pro Petals, Lifters, Hair Blades, Embossing tools, Scalpel Handles, Beveling

and Shading tools. All custom, all handmade and all incredible quality.

Norm also writes for the **RawHide Gazette** and takes many of the pictures of meetings and seminars required for the publication. He coordinates the printing and mailing of the **RawHide Gazette** for those members who can not get it over the Internet.

Norm is a consistent attendee at our PSLAC seminars



**Norm and General**



**Dusty getting ready to present the award  
Note Norm in the back—no idea....**

and functions and regularly attends the North PSLAC breakfasts.

What you may not know is his love for guns—all types. Norm has promised several more **RawHide Gazette** articles on interesting western and historical guns.

Congratulations Norm—Well deserved!

## July UFO at General's

Most years we do not hold formal meetings during July and August due to members vacation, class and Puyallup Fair entries. However, we do hold a UFO (Unfinished Fair Objects) get-to-gather to chew the fat and attempt to work on some of those unfinished projects.

This year was a bit weak on attendance with Ann and General, Paula and George, Frederica, Debbie and I. Due to another commitment I was only able to stay for about an hour but it was great to see everyone.



**Paula lacing  
and General**



**Frederica working  
on a new design**

# Tandy Leather Factory Press Release

September 29, 2011

## TANDY LEATHER FACTORY PUBLISHES 2012 BUYERS' GUIDE

**Fort Worth, Texas.** Tandy Leather Factory has announced the publication of their 2012 Buyers' Guide. This 156 page Guide is filled with all the supplies that leather craftsmen use and need the most. This 2012 Buyers' Guide contains 275 new items and a number of other new features. With the inclusion of over 50 QR Codes, looking through the Buyers' Guide can become an interactive experience. Smart-phone owners can view a number of instructional videos and even watch an interview with the world famous leather craftsman, Al Stohlman.

For more information or to receive a free copy of the 2012 Buyers' Guide contact: Tandy Leather Factory, 1900 SE Loop 820, Fort Worth, TX 76140 or call 817-872-3122. You can also view the Buyers' Guide or request a copy by visiting [www.tandy Leather Factory.com](http://www.tandy Leather Factory.com).

Tandy Leather Factory has just released its 2012 Buyers' Guide. It is filled with all of the supplies that leather craftsmen need and use the most.

The attached press release will provide the necessary details.

Jim Linnell  
National Advertising Manager

Tandy Leather Factory  
1900 SE Loop 820  
Fort Worth, TX 76140

(817) 872-3200 - Office  
(817) 872-3122 - Fax

[jlinnell@tandy Leather Factory.com](mailto:jlinnell@tandy Leather Factory.com) – Email  
[www.tandy Leather Factory.com](http://www.tandy Leather Factory.com) – Website  
[tandy Leather Factory.wordpress.com](http://tandy Leather Factory.wordpress.com) – Blog  
[facebook.com/tandy Leather Factory](https://facebook.com/tandy Leather Factory) – Facebook  
[twitter.com/tandy Leather Factory](https://twitter.com/tandy Leather Factory) – Twitter



## Editorial and other stuff

I'd like to begin with an apology to all of the readers of the **RawHide Gazette**. Sometimes "life happens" and we are unable to meet commitments. This has been one of those times for me. I'm not sure how Bob Stelmack was able to produce a quality publication every month for nearly 15 years—a definite tribute to his abilities and a goal for me to try and meet!

*I wrote the below nearly 3 months ago....*

Well, it's past the middle of June and I'm trying to get another **RawHide Gazette** edition out for you. Quite a challenge with all of the excitement around my place! One of the highlights of the week was a call from Chan Geer taking me away from one of those jobs that "has to be done" in spite of the unpleasantness....

A couple of days ago Debbie was doing laundry and I was mowing the grass. In the Pacific Northwest spring brings rain interspersed with momentary sunny days – just great for growing grass to crop height (12" – 18") without allowing it to dry enough to mow! A sidebar cutter and a hay rake would be appropriate attachments for my tractor – but no...! I'm mowing and what to my wondering eyes should appear a geyser of wash water coming out of the RV dump station – arrrghhh! Many of you know what that means - septic tank full! Just what I needed 3 days before eldest sons' wedding! Anyway, call super septic sucker truck, dig, bad smell, dig some more, which brings me back to Chan's call. He was calling to be sure I knew about his new video "Sheridan Style Tooled Checkbook". The video is just \$19.95 + \$5.00 shipping and handling. Sounds fantastic, any of you that have taken one of Chan's classes know how great a teacher he is! To get more information on this video or to order one, call Chan at (307)674.9226.

As soon as I get Alex and Jessica married and on to their honeymoon I've got two things that take priority – get this publication finished (it's destined to be a June/July issue) and order Chan's video.

*Current Events....*

It's already Fall! The grass stopped growing for the most part, Blackberries are ripe (a bountiful crop this year), leaves are getting ready to turn and it is comfortable to work outside although the days are shorter. Yesterday morning I walked around a big patch of blackberry bushes and Alder trees (they seem to have an affinity for each other...) and there, not 20' away was the prettiest doe deer just munching on grass. She looked at me and went back to eating her breakfast, slowly ambling away. Moments like this when I can truly experience the beauty of nature are some of the reasons I choose to live "out in the sticks". Of course, the hour+ long commute to my office in Seattle still sucks!

BTW, the kids got married, septic tank is better and I still haven't ordered Chan's video! - But I will!

As always, any articles, tips, hints, photos or other information you have for the **RawHide Gazette** can be sent to [webmaster@pslac.org](mailto:webmaster@pslac.org)

Thanks,

-rog-

Roger Kaiser – Editor

## Lavender Festival and Spokane Gun Show

The 8th annual Pend Oreille Valley Lavender Festival took place on July 9th and 10th in Newport, WA. Woody Collins and I attended and did fairly well in sales.

We were fortunate to be able to stay nearby with Woody's relatives so we didn't have to commute. If any of you crafts people are interested in attending a well organized and friendly show check out the following web site <http://www.povlavenderfestival.com> Having attended many festivals over the years, I can definitely say that this is one of the best.

Woody and I also attended the Spokane Gun Show put on by Lewis Clark Trader. We are currently trying to develop a following with our custom holsters. It's amazing the number of women who are becoming interested in guns and holsters especially conceal carry types. No pictures from this show as they don't allow cameras which I learned the hard way earlier this year. -Ken Bush



**The festival from our point of view  
we had front row seats to the music**



**The obligatory picture of Woody doing  
something constructive**



**August South Breakfast. Notice anything odd?  
Like, why am I the only one without food? Yup  
just my coffee and English Muffin—everyone else  
was nearly done eating when my steak came out of  
the kitchen.... But it was good when I got it!**

# Boy Scout Green River Camporee

Each year PSLAC has the opportunity to do demonstrations for local Boy Scout activities.

One we really enjoy is the Green River District Camporee. The camp is held in early June and is located at Pacific Raceways in Auburn.

The attendance is always about 300-400 Scouts and Scouters and great fun for everyone with games, Dutch Oven Cook Offs, Scout Skills and demos. A highlight for many of the youth is the drag racing. And why not? Isn't Girls, Nitro and Thundering Engines a big part of any young mans development? All kidding aside, over the last 20 or so years I've been to many Scout camps and the leaders of this Camporee put on a fantastic camp!

Scouting is one of the areas where Leather Craft is taught and occasionally a youth or adults interest is piqued to explore beyond the requirements of the Boy Scout Leatherworking Merit Badge.  
-rog-



**Dave, Barb and Debbie...**

**Between the Hydros and the Sani-Cans...**



**Barb and Dave**

**The lull before the storm**

**15 minutes later!**



## Chan Geer Class – Rathdrum, Idaho

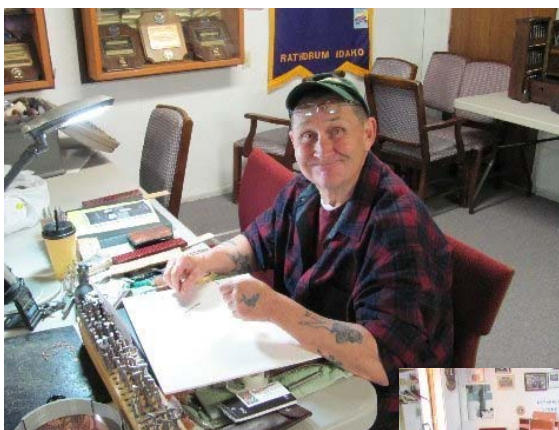
Two reasons PSLAC-East did not have our June 2nd Saturday open meeting at the Spokane Leather Factory. Chan Geer came to town and the Leather Factory was in the process of moving to their new location at 1705 North Monroe in Spokane. It's about a mile from the old location.

To liven things up in our local area, Chan Geer showed up at the Rathdrum Idaho Lions Club to present his latest 4-day class on lacing and wallet making. It's a brand new class and we were one of the first to try it out.

The first day we learned various lacing techniques such as single, double, triple and quadruple Cordovan, Flattop and Mexican Round. These techniques were then used to finish the wallet that we made in the next three days.

We started out by tooling the wallet back using Chan's pattern that he originally created for John Wayne's wallet. Why is this important? Well, it was a flower design and one participant felt that it was too girly a pattern. Blood and Guts was his preference. If you can't shoot it, why tool it.

On the second day, Chan showed us how to create credit card pockets without having to sew. And finally, we concentrated on learning how to create our own custom interiors using



**Woody Collins bright eyed and bushy tailed.**

**Dal Hoover pondering the next question. He got sick during class and couldn't finish. Hope he is doing better.**



**Busy work for Ken Bush, Bob Stelmack, and Aaron Williams. Arron's friend Debbie was keeping us on track and helping with chores.**



**Chan showing Dal the finer points of lacing.**



**Ron and Carlene Litz regularly show up for our classes. Over the winter, Carlene practiced her splicing and can now splice better than most of us.**



*Continued on next page*

10 different sets of patterns. Mixing and matching the patterns allowed us to come up with many more than 10 interior layouts.

All in all, it was a good class. I especially liked the part about making credit card slots without sewing. If you haven't taken a class from Chan, you don't know what you are missing.

Ken Bush



**Chan helping Jackie Holliday.**

**Steve Camp trying out Chan's new maul for light-weights**



**Julia McCormack watching Chan putting a resist on his wallet pieces.**

**Aaron and James Polson finishing their wallets.**



**Bob, Steve, Carlene also finishing their wallets.**



**Aaron Williams showing his paper pieced pattern.**



**Woody, Jeff Brumley, Bob and Steve learning how to apply the antique properly.**



## PSLAC in Homer Alaska

John Wickstrom, a PSLAC member from Olympia drove up to his Daughter and Son-in-Law's home in Homer Alaska.

John, his wife Gladys, her brother and his wife made the 2,640 mile trip (one way!) to see the family and to deliver a car for their grandson Jonathan.

John packed a few tools, kits and some leather for grandson Levi to work with.

John said the trip was beautiful but I'm betting the flight back was a bit more relaxing....



**John, Levi, Jessica and Brian**



## May Meeting—Belt Challenge

The theme for the May meeting was a belt or strap. Since I can't remember who "won" I'll just show all of them. Ken Imus sent a couple of holsters to share and Phil O'Neil at the June "Garage Sale". -rog-



**Len Madison**

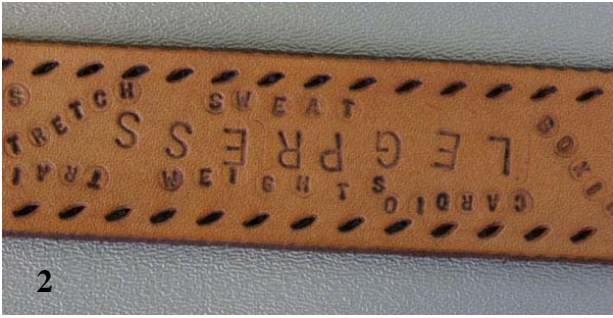
**Phil O'Neil**

**Norm Lynds**

**Paula Marquis**

**Barb Lourdes**





- 1. Len used iridescent powder
- 2. Barbara's belt
- 3. Jeff, Phil and Guo
- 4. Phil's belt
- 5. Phil at the Diamond P booth
- 6. Guo's birthday cake
- 7. Ken Imus's holsters



**Western Washington (Seattle/Tacoma/Everett)**  
**PSLAC CURRENT SCHEDULE FOR 2011**

**General Member's meetings** are on the 2nd Sunday of each Month unless specified below. 1:00 PM to 4:00 PM approx.

- Meetings held at Issaquah Valley Senior Center, 75 NE Creek Way, Issaquah, WA 98027 General meeting start at 1:00 PM followed by the mini-demos

**Breakfast informal get-together locations:**

**North Breakfast** >>> Last Friday of the month at 10:00 AM. Lake Forest Park Town Centre. 17917 Bothell Everett Hwy, Bothell, WA 98012 Bothell Way N, bordered by 170th N. & Ballinger Way N. Meet in the Third Place Books eating area

**South Breakfast** >>> 3rd Saturday of the month at 8:30 AM. Oscar's Restaurant, 8726 S. Hosmer St. Tacoma, WA

**Eastern Washington (Tri -Cities) Desert LeatherCraft Group (DLG)**  
**PSLAC CURRENT SCHEDULE FOR 2011**

**Tri-Cities Desert LeatherCraft Group Member's meetings** are on the 3rd Saturday of each month unless specified below:

- Informal meetings held at 2532 Banyon St. Richland, WA 99352 (Call Bob at 509-392-2589 for directions). Google map reference +46 16' 19.20", -119 18' 32.40"

**Eastern Washington (Spokane) PSLAC East**  
**PSLAC CURRENT SCHEDULE FOR 2011**

**PSLAC East Member's meetings** are on the 2nd Saturday of each Month unless specified below. 10:00 AM to 1:00 PM approx.

- Informal meetings held at Spokane Tandy Leather Factory Store, 1702 N Monroe St. Spokane, WA 99205 (509) 328-9939 Contact Ken Bush for time, date (normally the 1st Saturday) & details.

Ken Bush

White Rose Leather

11923 E. Fairview Ave.

Spokane Valley, WA 99206

whiterosex@aol.com 509.926.2087

**Classes:**

Now that the Tandy Leather Factory has moved to it's new location, PSLAC-East will be restarting their open classes with a few changes. For those of you new to our classes, PSLAC stands for Puget Sound Leather Artisans Co-op. Since Spokane is east of Puget Sound, we added East to our name.

1. The new location for Tandy Leather Factory (formerly known as the Leather Factory) is in the E. 1700 block on North Monroe. Easy to spot, look for a two tone tan building.
  2. **Major Change:** The new location only allows us to handle 9 students at a time. To be fair to everyone we decided to seat students on a first come, first served basis. If there are no seats available you can still watch on the sidelines but participation will be limited.
  3. With the new seating limits in mind, the **new hours for the open classes are now 10 AM to 1 PM.** Of course this is subject to change once we get a few classes under our belt.
  4. **Please Note:** We used to have the classes on the 2nd Saturday of the month, **now they will be scheduled for the 1st Saturday of every month.** Thus the first class will be this coming Saturday October 1. Stan will be presenting a class on carving fancy coasters.
  5. In addition to the regularly scheduled PSLAC-East 1st Saturday classes, Woody and Jackie will be doing additional ad-hoc classes as their schedules permits.
- Woody's first class will held on October 8 and will be on carving an oak leaf.**  
**Saturday October 15, Jackie will teach a class on coloring the oak leaf.**

Keep an eye out for further announcements on their forthcoming classes.

See you in class,  
Ken

### Next Meeting on **Sunday October 9th at 1:00 PM**

General meeting starts at 1:00 followed by demo—This month Norm will demonstrate Tool Sharpening Techniques (bring a knife of your choice to practice with)

*Meet at* The Issaquah Valley Senior Center **Address 75 NE Creekway,  
Issaquah WA 98027  
(See last page for map)**

#### Yearly General Meeting Schedule for 2011: Issaquah Valley Senior Center

- Oct. 9** 1:00—4:00 PM Craft Room  
— Demo on “Low Cost (under \$10 USD) Manual Tool Sharpening” by Norm Lynds
- Nov. 13** 1:00—4:00 PM Craft Room  
— Demo on “Mechanical Tool Sharpening techniques” by Norm Lynds
- Dec. 11** 1:00—4:00 PM Craft Room  
— Christmas meeting—Bring a wrapped gift for the Gift Exchange if you’d like to participate. Under \$20 or something you can make in a day.

## Fiskars Precision Knives

I'm sure you all remember about my addiction to tools. Well, I just discovered a new one for me! I was doing the dutiful husband thing (following my wife around the fabric store) & I noticed the scrap-booking section (OK, someone tell me what that hobby has to do with fabric & sewing—but there it is...). In any case as I was looking at patterns & the like (yup, there are some pretty cool alphabets, patterns & borders for scrap booking and stamping) I spotted these rather interesting, funny looking knives. Uses a #11 replaceable hobby blade (my favorite scalpel blade) and pretty cheap too. Just \$5 for the knife (orange) or \$11 for the retractable (black) version.



One of the

“old timer” tricks to cutting curved edges in leather is to use a swivel knife with a thin angled blade. If the swivel knife blade is sharp just cut over a cutting mat or poster board and you can have an intricate, beautiful curved edge. This knife works the same way. Even though the grip may seem a bit odd to a leather-crafter it works!

Check out the Fiskars web site at:

<http://www2.fiskars.com/Products/Crafting/Craft-Knives>

## PSLAC Members Only Advertisements

Any PSLAC Member can advertise leather related products or services subject to approval. Just send your text, pictures and/or logo to [webmaster@pslac.org](mailto:webmaster@pslac.org)

### Leather Accents

Custom Stitching Horses & Clams

John Wickstrom—Maker

Beautiful handcrafted wood Call for information 360-456-1688



### Leather Big Book<sup>1</sup> Covers

[www.leatherbigbookcovers.com](http://www.leatherbigbookcovers.com)

by Bob Stelmack,

Desert Leathercraft LLC

Let your imagination run wild and have a **Custom Leather Big Book<sup>1</sup> Cover** made for you. The covers will be “**one-of-kind**” and are quite striking.



The Big Book is a registered trademark of Alcoholics Anonymous World Services, Inc.

# PSLAC Members Only Advertisement Page

Any PSLAC Member can advertise leather related products or services, subject to approval. Just send your text, picture and/or logo to [webmaster@pslac.org](mailto:webmaster@pslac.org)



## MARQUIS UNIQUE LEATHER ARTISTRY, LLC

I make almost anything that can be made from leather and can be sewn by hand. A lot of my works are 'bespoke items', meaning, one of, individual custom requests, ranging anywhere from books and folders to rifle scabbards, holsters and golf bags, fully carved and stamped, and any and all articles in between, which also includes moulded bowls and pictures.

Phone: (206)-523-6295

E-mail: [marquispg@aol.com](mailto:marquispg@aol.com)

[www.marquisuniqueleather.com](http://www.marquisuniqueleather.com)



Black Horse Leatherworks & Saddlery specializes in high quality & unique custom western tack and apparel. We make some English items such as Schooling chaps & Stall items. We make all our leather items one at a time, by hand per our clients specifications.

C.E. Gessell, Owner

*Our Motto: If you can imagine it... we can create it!*

## Fantastic Leather Burnisher

- ▶ New and Improved
- ▶ Faster than ever
- ▶ Cuts burnishing time by 90%
- ▶ Improves quality and appearance
- ▶ Consistent finish in a single pass
- ▶ New products available



For more information call 509-946-4247  
View our eBay Store:  
<http://stores.ebay.com/scentofleather>  
Visa & Mastercard orders accepted by phone

**New Edge Finishing System Available**

## DIAMOND P LEATHER SHOP PHIL O'NEILL

Saddlery: New, Used-Repair  
Custom Made Leather Goods  
25051 - 180 Ave SE, Kent WA 98042  
Hours By Appointment Or By Chance  
(253) 631-9770

This Is A One-Man Outfit  
All Custom & Repairs Are Crafted By Myself  
E-mail: [wsubarbara@gmail.com](mailto:wsubarbara@gmail.com)

## Custom Maker Stamps Grey Ghost Graphics By Jeff Mosby

Custom maker stamps, laser cut acrylic templates and custom tapoffs for the leather craft field. Custom cut from your artwork at reasonable rates!

P.O. Box 30268, Myrtle Beach, SC 29588  
(866) 205-9810 or (843) 903-4788

[www.greyghostgraphics.com](http://www.greyghostgraphics.com)



## Norm Lynds, Toolmaker

Mallets, Modelers, embossing tools, lifters and others on request

Phone: (425) 357-1001

E-mail: [sagerat2003@yahoo.com](mailto:sagerat2003@yahoo.com)

**Leather Big Book Covers**  
[www.leatherbigbookcovers.com](http://www.leatherbigbookcovers.com)  
by Bob Stelmack,  
Desert Leathercraft LLC

# Leather Company Advertisement Page

Support our sponsors and take advantage of the PSLAC Membership Discounts...

## Tandy Leather Factory

The Leather Factory #21 PORTLAND  
Toll Free: 888-277-3360  
13221 NE Whitaker Way Portland, OR 97230

Tandy Leather #126 SEATTLE  
Toll Free: 866-220-9698  
14713 Aurora Ave N Seattle, WA 98133

The Leather Factory #09 SPOKANE  
Toll Free: 800-822-8437  
28 W Boone Ave Spokane, WA 99201

Tandy Leather #124 TACOMA  
Toll Free: 888-222-0510  
13819-C Pacific Ave South Tacoma, WA 98444

## FERDCO



In the US - Contact Ferdco Toll Free  
@ 1-800-645-0197  
International - 1-208-689-3006  
Fax - 1-208-689-3008  
E-mail - ferdco@smgazette.com

*Offering a discount to the PSLAC members of a 10% off of any parts and supplies ordered and 2% off of any equipment (sewing machines ,etc.)*

Outside Washington  
1-800-343-9949

(206) 328-0855  
Fax: 328-0859

## MACPHERSON

*Leather Company*

Leather, Shoe Finding and Saddlery

*Offering a 30-40% off retail discount to the PSLAC members*

519 - 12th Avenue S.  
Seattle, Washington 98144



Toll Free:  
(800) 541-3264  
**Bee Natural  
Leather-  
care**

*The ultimate in  
leather care prod-  
ucts*

P.O. Box 820803, Vancouver, WA, 98682-0018  
(360) 891-7178 , FAX: (360) 891-7166  
E-mail: [bnatura@pacifier.com](mailto:bnatura@pacifier.com)

## GLOBAL LEATHERS



Web site: [www.globalleathers.com](http://www.globalleathers.com)  
Telephone : 212-244-5190  
Fax : 212-594-7515  
E-mail: [globalleathers@usa.net](mailto:globalleathers@usa.net)  
Paul Crystal

*Offering a discount to PSLAC members*

## BRETTUNS VILLAGE LEATHER

Selling odd lots, miscellaneous overstocks,  
bargain leathers and leathercraft  
accessories, all from Maine, only online

Sides, Full Hides, Buckles, Key Rings, Laces, Thread,  
Tools, Rivets, Scrap Pieces, Elk & Buffalo Scrap

**Always Free Shipping in the 48 States**

[www.brettunsvillage.com](http://www.brettunsvillage.com)

## Steve Derricott



Twister D Products  
301 E. Bower St.  
Meridian, Idaho 83742  
(208) 884-3766 - Fax (208) 884-3767  
A Division of Gfeller Casemakers, Inc.  
[www.lacemaster.com](http://www.lacemaster.com)

*Offering a 10% discount to the PSLAC members*

## Leather, Suede, Skins, Inc.



261 West 35th Street  
11th Floor, New York, NY 10001  
Tel: (212) 967-6616  
Fax: (212) 564-5759  
[www.leathersuedeskins.com](http://www.leathersuedeskins.com)  
Email: [leather.suede.skis@att.net](mailto:leather.suede.skis@att.net)

*Offering a 10% discount to the PSLAC members*



## Dusty Johnson

PLEASANT VALLEY SADDLE SHOP  
1220 S. County Rd. 21  
Loveland, CO 80537  
Phone: (970) 669-1588  
Fax: (970) 669-1589  
E-Mail: [dusty@pvsaddleshop.com](mailto:dusty@pvsaddleshop.com)  
URL: <http://www.pvsaddleshop.com>

*Offering a 20% discount to the PSLAC members*



# Leather Fiesta

**45th Annual IFoLG**

**International Federation of Leather Guilds  
Conference & Trade Show**

*hosted by:*

***IILG - International Internet  
Leathercrafters' Guild, Inc.***

**October 13-16, 2011**

**Albuquerque, New Mexico**

*at the Marriott Hotel - Uptown*

*Leather crafters & Guild displays  
from around the world!*

*Classes and Demonstrations!*

*Vendors and products!*

*Lots of items for Raffle!*

*Leatherworking competition!*

*Banquet and Awards presentation!*

***Come join the fun, fellowship,  
and education!***



***Visit IILG online: [www.iilg.net](http://www.iilg.net)***

*for details contact: Paul Brinegar - 505-254-0337 or  
Paul Zalesak - 505-269-8563*



# RawHide Gazette

**Editor/Publisher :** Roger Kaiser  
**Co-Founders:** Bill Churchill & General Seymour  
**Treasurer/Secretary:** Barbara Lourdes  
**Directors:** General Seymour, Ken Erickson, Len Madison, Roger Kaiser & Paula Marquis

The **RawHide Gazette** is published monthly (12 times a year). Address for information and correspondence: PSLAC, c/o Barbara Lourdes, PO Box 1144, Auburn, WA. 98071, USA  
E-Mail: [Billing@pslac.org](mailto:Billing@pslac.org)

PSLAC Membership:  
"a" - Internet access to **RawHide Gazette** including Member only area & meeting attendance \$10/year. (1 Person)  
"b" - US Postal Mail **RawHide Gazette** including new Member articles & meeting attendance \$24/year. (1 Person)  
"c" - Internet access to **RawHide Gazette** including Member only area & meeting attendance \$15 per year. (Family)

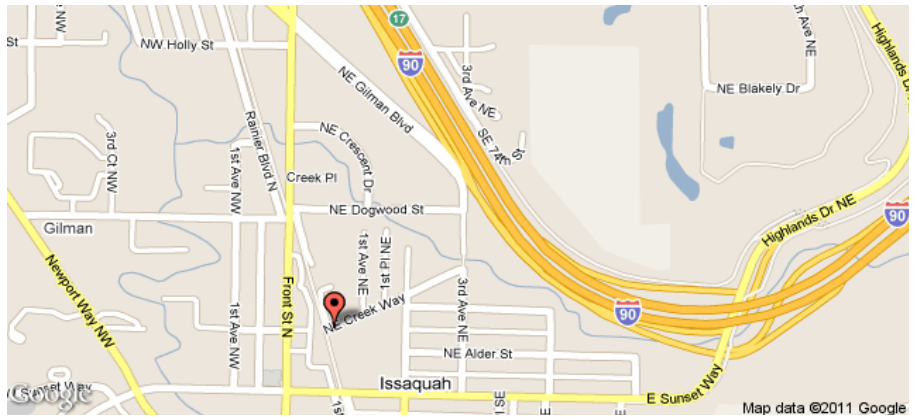
All submissions are subject to editing for clarity and length. All articles submitted must be accompanied by name, address and permission of writer

### Advertising Rates

The **RawHide Gazette** offers advertising space to interested parties. Ad spaces are as follows:  
1/4 Page or Business Card.....\$60 USD  
1/2 Page.....\$110 USD  
1 Full Page.....\$200 USD

These rates cover a six month time period. PSLAC members are entitled to a 25% discount. Leather companies supporting PSLAC are given free Business Card size advertisement, additional space at regular rates.

The Puget Sound Leather Artisans Co-Op can be found at:  
<http://www.pslac.org>



### Taking I-90

**From Auburn:** North on Hwy 167 or I-5, then I-405 North, then onto I-90 Eastbound:

**From Everett:** South on I-5 to I-405 South, or to I-90 Eastbound:

**From I-90 Eastbound:** get off on exit 17/ Front St., turn right onto Front Street. At the third stoplight, turn left onto E. Sunset Way and see below:

### Taking Hwy 18 from Auburn, Covington, Maple Valley to Issaquah:

Get on Hwy 18 Eastbound, about 2 1/2 miles after Maple Valley exit take the Issaquah-Hobart exit. Follow signs (left) to take Issaquah-Hobart Road to Issaquah (about 8 1/2 miles). Issaquah-Hobart Road

becomes Front Street. In Downtown Issaquah turn right onto E. Sunset Way and see below:

### After Turning onto E. Sunset Way:

Go two blocks (past Police and Fire station), turn left onto 2nd Ave SE, go past the old Senior Center building and a baseball field on your left. Turn left onto NE Creekway, go about 1 block. The Issaquah Valley Senior Center is a brick building on your left, parking in front of it. There is also parking behind from E. Sunset turn left into the parking lot just before the Police station (look for a large parking sign on your left) and follow it until you see a kids playground. **Address 75 NE Creekway, Issaquah WA 98027**

**PSLAC**  
**c/o Barbara Lourdes**  
**PO Box 1144**  
**Auburn, WA 98071**  
**USA**

