

Rawhide Gazette

"Without question, the Rawhide Gazette is by far the best and most informative and comprehensive Guild publications of all of them! You are to be commended for your very fine and professional efforts. Keep up the good work. With admiration"
/signed/
Al & Ann Stohman, December 1997

Copyright © 2012 by PSLAC, All Rights Reserved

Puget Sound Leather Artisans Co-Op

January-February 2012

Hide Highlights

Page

1-3 Arrowhead Basket Weave

4 Editorial and tips

5-6 Ken's Knothole/Black Powder/Pioneer Craft Show

7 Stropping—Part Deux

7 Workshop Report

8 & 9 PSLAC Schedules

10 Bill Churchill Award Nomination Form

**Next Meeting on
Sunday March 11th
at 1:00 PM**

General meeting starts at 1:00 followed by the second class on the Flower Press (see schedule on page 10 for details)

Meet at The Issaquah Valley Senior Center Address 75 NE Creekway, Issaquah WA 98027

(See last page for map)

Arrowhead Basket Weave

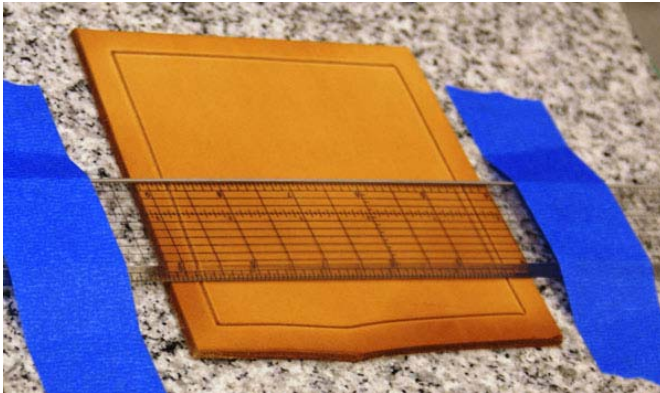


Ken, Norm, John, Barbara, Sister Rachel and Frederica watch as Paula demonstrates the Arrowhead Basket Weave

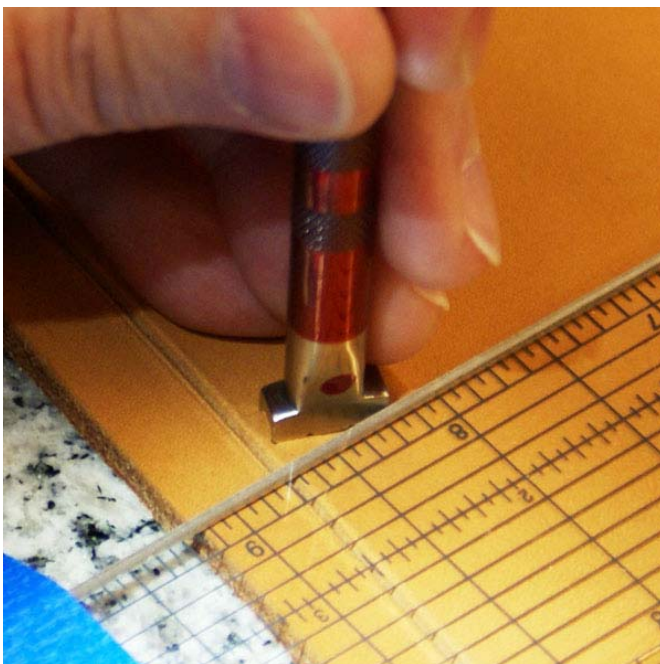
For the December 2011 mini-workshop session Paula Marquis demonstrated tooling the Chan Geer arrowhead pattern. A list of tools and materials for this project is provided at the end of this article. After casing our 6x6 inch practice piece, a square was drawn onto the leather and this was cut with the swivel knife. The following steps were done to complete the piece.

1. Measure the distance for the horizontal center of the basket weave pattern and place a tic on both the top and bottom edges of the piece inside the border cut area of the piece.
2. Place the leather on the pounding surface and place a ruler vertically between the tics and tape it down securely to the pounding sur-

face. The ruler will flex and help to hold the leather in place.



3. With the basket weave stamp of choice, place it against the ruler at the bottom horizontal line and tic the inner surface with the corner. What you are going for is a mark the width of your basket weave stamp from the ruler.



4. Place the tip of one leg on this tic at the borderline and the top tip against the ruler. Stamp the impression.

5. Place the bottom of the inner leg of the stamp in the first impression, with the tip against the cross center of the first impression, and the upper leg against the ruler. Stamp the impression. Continue stamping the impressions up the ruler until the top line is reached, or the last impression is slightly short of the line. This will be filled in later with the beveling and border stamping.



6. Once this first series of stamps has been completed, remove the ruler and place the stamp tip in the bottom center tic from step one and make another tic to the other side as in step three. Place the top of the inner leg tip against or slightly covering the impression left by the first stamp, with the tip of the bottom one in the tic on the bottom line. When correctly placed stamp the impression.

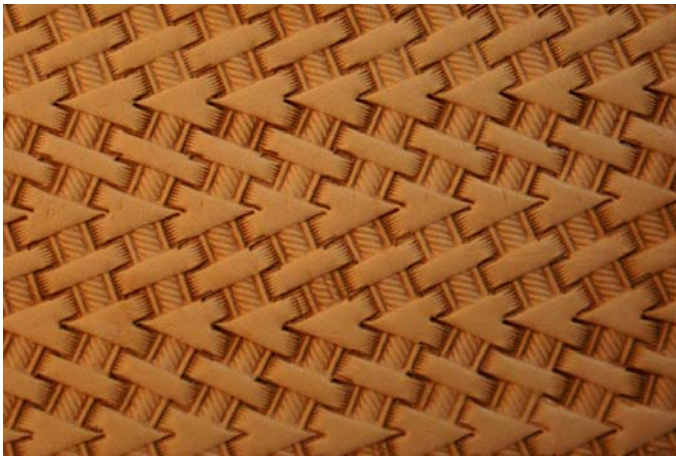
7. Continue on up placing the legs of the stamp in the impression left previously and against or slightly covering the top impression. Use the top impression as your guide here to keep the arrow-heads symmetrical.



8. To make a second row on either side, place the inner leg on the stamp between the impressions of the outer leg of the previous row.

9. Turn the piece 180 degrees so that what was the top now becomes the bottom. On one side, make 2 tics outside the existing stamping (step three). Hold the stamp with the top edge against or slightly covering the stamped impression and the bottom tip at the tic line. Stamp the impression. Continue stamping on up the line as above. Do a second line and switch to the other side and do the same there.

10. Continue this pattern, working always with the arrowheads pointing up as you stamp them. After the pattern is filled out, bevel the border and do the border stamping. Many variations of this can be done. A very detailed article by Chan is in the September/October 2011 issue of the Leathercrafter's Journal.



11. As you will notice, it is difficult to get all the tips of the arrowheads aligned perfectly. Use a vertically lined stamp, such as the F910 to clean up the arrowhead tips and practice, practice, practice.



Oops—Just missed it!

Tips:

- Tony Laier introduced us to the ruler Paula used several years ago. It is the C-Thru B-1M. This ruler has a beveled edge on one side and a vertical on the other which has a metal edge embedded in the surface. This is able to withstand much more abuse than the plastic. I have found them at Ben Franklin and Michael's.
- Mark one side of the stamp with a dab of paint or some other readily visible mark so that your pattern will always be the same.
- Keep your fingernails trimmed (Ed. note: or chewed off...).

The attached photos are pretty self-explanatory. The first ones are Paula's, and the last few are mine. In the oops one, notice that my very first stamped impression was off just a little and I did not make allowance when stamping the offsetting row, thus had the little unstamped area at the tip of the arrowheads. The last photo shows the final stamping of the tip, both completed and undone to show the comparison.

Norm



Completed tips left and unfinished right

Materials for the arrowhead basket weave stamping project.

- A 6"x 6" piece of cased tooling leather
- A see through ruler longer than your leather
- Masking tape
- Wing dividers
- Tooling surface
- Swivel Knife
- Mallet and basket weave stamp
- F910 or similar stamp to finish the arrowhead points
- Beveller (or other treatment) for the border

A Tip from our Members

Often it is difficult to impregnate a strop with white rouge due to the hardness of the rouge stick. Many say to shave a bit off the block with your knife. Since that may dull your knife edge instead try using some 150-220 grit sandpaper to sand the rouge stick above the strop creating rouge dust that will work into the leather strop easily.



Phil O'Neill

Here's a note from Phil's wife on his recovery from surgery.

Phil wanted me to tell you to thank all from the breakfast group. He just got home today from spending 2 weeks in the hospital. Hopefully this will be the last for a long time. He has had so many setbacks.

Tell everyone "hi",
Barbara

Phil—PSLAC wishes you a quick and full recovery!

Editorial and other stuff

Here we go with another **RawHide Gazette** edition for you. We've got the December Mini-Demo for you—Paula showing the ins and outs of the Arrowhead Basket Weave.

In an e-mail a friend referred to Leather craft as a dying art form. I think nothing is further from the truth. Leather is an extremely versatile medium! Think of all we can do with it—unbelievable! I think we are too quick to bemoan dwindling guild memberships or class registrations as an indicator of the health of the craft.

Heading to lunch the other day up on Capital Hill (the Other Coast Café—you gotta try the Ragin' Cajun!) and there tucked in between other small shops was a clothing store for young women and in the window were some accessories (decorated belt, hand decorated shoes...) made of leather with surprising (to me) prices. Many of us wouldn't think of items made with chrome or oil tanned leather as leather art—there certainly wasn't any tooling—just some stamped steel conchos and studs but it was leather craft! Quite nicely done too with great attention to detail and finishing!

There will always be a place for traditional carved and tooled items and the associated skilled labor required to produce them. I encourage all of us to start thinking “out of the box” that is where the direction of our craft lies. Not in doing something that is necessarily unique to the craft but something that is new and unique to you!

As always, any articles, tips, hints, photos or other information you have for the **RawHide Gazette** can be sent to webmaster@pslac.org

-rog-

Roger Kaiser – Editor

Ken's Knothole

It's been awhile since I weighed in here on the RG. The other directors and I are going to be helping Roger out with adding content to the RG with articles, tips, ideas, and we're hoping to see some articles from the PSLAC general membership, as well.

We could use some ideas from members for short projects to do after our meetings on Sundays. Also ideas for Saturday seminars, we haven't had those for some time now.

The February PSLAC meeting was at MacPherson's on 2/12/12, as we've done for the last 4 or 5 years. We had a short meeting, between wandering around the back shelves where the public usually isn't allowed; looking for supplies and tools we just can't live without.

I found an example of a different way to do skiving on the Internet. As a lead in, I have this idea that one of these days I'll take a whack at taking some classes on making shoes and boots. It's always been an interest of mine, maybe in part because I seem to have a tough time finding shoes or boots that really work for my particular situation. To date, I've only made a few moccasins, and one shoe, of the last-less variety, this one at one of our Saturday seminars a few years back, taught by our very own Paula Marquis. All the class participants had a great time that weekend. So I'm always interested in finding websites about shoe making, one of which is the Honorable Cordwainers Company: <http://www.thehcc.org/> They have a great site with so much info, you can easily while away hours and hours there. I suggest you check it out if you have an interest in making shoes. Anyway, I happened to be reviewing emails from HCC members and one referenced some "how-to" videos on YouTube, by a bespoke shoemaker, Marcell Mrsan, from Budapest, Hungary <http://handmadeshoes.wordpress.com/> and his shop's website <http://www.koronya.com/> I checked out a few of his videos and found one on skiving. He has a method for this that I haven't seen before; he holds a slab of marble angled in his lap and uses really sharp curved knives to skive down a piece of leather. It is always fun to find a new way of doing something. Check it out! Do a search on YouTube for MarcellHUN, or click this link <http://www.youtube.com/watch?v=6LsE4nsEOJk>

Coming up in March is the annual Cascade Mountain Men Black Powder Gun and Craft show, at the Monroe Fairgrounds, Mar 10th - 11th, 9 - 5 on Sat and 9 - 4 on Sunday. A lot of the local black powder club members make a day of it, and along with the 100 or so vendors, dress up in period clothing, from colonial, to fur trapper, to civil war era, so it tends to be real colorful show. We get vendors from all over the US, Canada and other countries, you can find deer and elk hides, brain tanned skins, rawhide, knives, shooting bags, beads, oh, and of course black powder guns, though these are all period replicas, no modern black powder rifles. The Wash. Arms Collectors have a show in another building at the fairgrounds that weekend and there's usually a swap meet in a third, so something for just about everyone. I'll have a table there and Andy and Pat from Tandy leather will be there as well. Hope to have some of you come by to say hi.

http://www.cascademountainmen.com/files/show_flyer.pdf

Ken Eriksen



Muzzle Loading Arms and Pioneer Craft Show

March 10 & 11, 2012

Saturday 9 am to 5 pm / Sunday 9 am to 4 pm

Evergreen State Fairgrounds Monroe, Washington

Presented by Cascade Mountain Men, Inc.

Commemorating the Fur Trade, Colonial America & Civil War

Traditional (pre-1840) Muzzle Loading firearms (original, custom and production replicas, gun building kits). Come talk to custom gun builders. Learn about their craft. Muzzle Loading Gun Parts and Accessories – Shooting Supplies – Leather & Fur Goods – Period Clothing and Camping Gear – Early & Native American Crafts – Trade Goods – Craft Supplies – Beads – Art – Historical and How-to Books.

LARGEST SHOW of its KIND!!!

More than 300 traders and exhibitors from across the country.

LIVE DEMONSTRATIONS: Blacksmith making hand forged iron/steel implements of the period. Wool Spinning – Hand Weaving – Wood Carving and more!
See how the pioneers and buck skinners lived on the trail.

Admission: \$5 per day
FREE parking.
Under 16 must be accompanied by an adult. Ages 12 and under are admitted FREE.



PO Box 1296

Issaquah, WA 98027-1296

www.cascademountainmen.com

Trader information: 425-392-1972

For directions visit: www.evergreenfair.org/sitemap.html

Stropping Part Deux

Well it seems like I stirred up quite a controversy over the placement of the leather on a strop board. This is good! Discussion amongst Leather Craftsmen leads to innovations and we even might learn a thing or two (I certainly did!).

In the Sharpening article I stated the strop board leather should be glued to the board on the flesh side with grain (hair) side up and the rouge should be applied to the grain side. This is the way I've always done it and have achieved great results.

However the **RawHide Gazette** had barely hit the streets before a flurry of e-mails started hitting my inbox. It seems there are as many ways to orient the leather as there are sides to it. Peter Main (a leather artist I have the highest respect for) prefers to use the flesh side to hold the rouge since the rougher surface will hold more rouge. Another leather worker uses both types of strop for different applications. Suffice it to say try it and use what works for you.

The same can be said for the color of rouge. Red is usually somewhat waxy and a bit finer. White usually cuts a bit faster. However, we may be splitting hairs here since both will provide you with a finely polished edge. Several people suggested they use white rouge on flesh side for faster cutting and red rouge on the grain side for the

final polish. Again experiment and use what works best for you.

Another suggestion is to use very thin leather for your strop boards to keep the leather from flexing under your blades which should keep the edges flatter.

A hint from Bill Churchill is to use a business card (with some rouge) on a hard flat surface to strop your swivel knife blades. Peter Main suggests hot-pressed illustration board (from an art supply house). The reason for doing this instead of stropping them on leather is the leather will "give" a bit and eventually round over the surface of the swivel knife.
-rog-

WORKSHOP REPORT

This month's meeting workshop is to paint the florals and tooling we have been doing since January for the flower press. So, bring water dishes, brushes, paints, etc., and don't forget plenty of paper towels to rub, dry and clean our brushes on. It will be a fun afternoon. Norm will be bringing our flower presses, so we can measure and size our pieces of leather to fit the top properly.

Just a reminder that for the month of April, Dusty will be leading us in making a scissor case. Also Andy will demo the molded Smartphone case. The theme being simplicity and

functionality.

Meeting workshop for May is the coin tray from Frederica—should be a fun and interesting project.

June will be one of our BIG workshops for the year. Chan Geer will be coming to teach his new tri-fold portfolio pocket notebook with a magnetic closure. It is a very classy looking project and extremely functional. Chan has some new techniques in construction.

Paula is organizing this workshop and anybody interested should contact her. She will be bringing photos of the project to the meeting and she said there were still a couple of spots available for the class.

Because there has been a big demand for Chan's class, it would be a good idea for those interested in submit a deposit and the rest of the fees as soon as possible to ensure your spot in the class.

Class Details: 3-day workshop for \$250.00 per person for the three days including all materials for the project. (Chan normally charges \$125.00 per person per day, but, he is giving us a special discount and charging only for 2 days.)

Class Dates: Thursday 7th, Friday 8th and Saturday 9th June and the next day Sunday 10th is the Picnic/BBQ/Garage Sale/Bill Churchill Award.

Should be an extra good Picnic

Western Washington (Seattle/Tacoma/Everett)
PSLAC CURRENT SCHEDULE FOR 2012

General Member's meetings are on the 2nd Sunday of each Month unless specified below. 1:00 PM to 4:00 PM approx.

- Meetings held at Issaquah Valley Senior Center, 75 NE Creek Way, Issaquah, WA 98027 General meeting start at 1:00 PM followed by the mini-demos

Breakfast informal get-together locations:

North Breakfast >>> Last Friday of the month at 10:00 AM. Lake Forest Park Town Centre. 17917 Bothell Everett Hwy, Bothell, WA 98012 Bothell Way N, bordered by 170th N. & Ballinger Way N. Meet in the Third Place Books eating area

South Breakfast >>> 3rd Saturday of the month at 8:30 AM. Oscar's Restaurant, 8726 S. Hosmer St. Tacoma, WA

All Day Workshops:

Brad Martin 3 Day Workshop Southwest Leather Pot (We are still working with Brad to schedule this class—more details forthcoming) **Cost \$375**

Dates: TBD (watch this space) 3 Days in the Fall 2012

Time: TBD (watch this space)

Location: TBD (watch this space)

Eastern Washington (Tri –Cities) Desert LeatherCraft Group (DLG)
PSLAC CURRENT SCHEDULE FOR 2012

Tri-Cities Desert LeatherCraft Group Member's meetings are on the 3rd Saturday of each month unless specified below:

- Informal meetings held at 2532 Banyon St. Richland, WA 99352 (Call Bob at 509-392-2589 for directions). Google map reference +46 16' 19.20", -119 18' 32.40"

Eastern Washington (Spokane) PSLAC East
PSLAC CURRENT SCHEDULE FOR 2012

PSLAC East Member's meetings are on the 2nd Saturday of each Month unless specified below. 10:00 AM to 1:00 PM approx.

- Informal meetings held at Spokane Tandy Leather Factory Store, 28 West Boone Ave. Spokane WA 99201 Contact Ken Bush for time, date (normally the 2nd Saturday) & details.

Ken Bush

White Rose Leather

11923 E. Fairview Ave.

Spokane Valley, WA 99206

whiterosex@aol.com 509.926.2087

Mini-Workshop Schedule for 2012: Start about 1:30 after the general meeting at 1:00

March 11 Flower/Leaf Press—Session #2 We will color the stamped pattern using your favorite media/techniques. These could include stains, acrylic paints, dyes, airbrush, dry brush—your choice. Bring whatever you will need to finish.

We will finish the Flower/Leaf Press by attaching the carved, tooled and finished leather to the plywood presses Norm will bring. Contact cement will most likely be the preferred method but again it is your choice if you have another technique. The cost for the presses is still TBD but should be minimal. We will publish plans for the press in the March or April **RawHide Gazette** for those members that are unable to attend the General Meetings.

April 1 Molded Smartphone case Andy has a really quick design he is willing to share. Dusty will also be demonstrating a scissor case project.

May 6 Coin Tray Frederica will show us how to make a leather coin/key tray. More information to follow.

Yearly General Meeting Schedule for 2012: Issaquah Valley Senior Center

March 11 1:00—4:00 PM Craft Room General meeting followed by the Mini-Workshop

April 1 1:00—4:00 PM Craft Room General meeting followed by the Mini-Workshop
Meeting date moved due to Easter Sunday

May 6 1:00—4:00 PM Craft Room General meeting followed by the Mini-Workshop
Meeting date moved due to Mother's Day

June 10 12:00—4:00 PM Craft Room—Annual Picnic and Garage Sale—Club provides drinks, meat and condiments—Bring side dishes and deserts

July 14 UFO (Unfinished Fair Object) General's or Len's house - Summer Break

August 11 UFO (Unfinished Fair Object) General's or Len's house - Summer Break

September 9 1:00—4:00 PM Craft Room General meeting followed by the Mini-Workshop

October 14 1:00—4:00 PM Craft Room General meeting followed by the Mini-Workshop

November 11 1:00—4:00 PM Craft Room General meeting followed by the Mini-Workshop

December 9 1:00—4:00 PM Craft Room General meeting followed by the Mini-Workshop

The Bill Churchill

11th Annual AWARD Nomination Form For the Year 2012

The PSLAC MISSION is...

- To further the enjoyment of leather and to help others learn more about the real joy of leather - working as a group and sharing ideas and knowledge of leather, its uses and how to use it. To pass on this knowledge to others and then have them pass it on to the new members.
- A fellowship with peers, young and old, expert and non-expert, anyone who has the love of leather.
- To show and demonstrate to people outside the Co-Op leather in all forms and to help them become interested in leather...to share...time talent, with all others in the Co-Op - especially the young.

The Bill Churchill Children's Leather Program Award is designed to recognize PSLAC members who are carrying on those principles of the PSLAC mission.

Nominations can be made by any PSLAC member and should be in writing. This form can be used, or any other written method is acceptable. Please give the completed nomination to any Director or email to: General Seymour g_e_seymour@msn.com or webmaster@pslac.org by April 30th.

The PSLAC directors will make the decision for each year and the award will be given only once in a person's lifetime. The award will include a medal similar to the Stohlman award with a replica of Bill's hands and his axiom: C.O.P.I. (confidence – observation – practice - imagination).

RULES:

1. The award may only be won once in a lifetime.
2. The Directors will evaluate the nominations and decide on a winner – one each year.
3. If one of the Directors is nominated, that Director will be replaced by another PSLAC member for the purposes of selecting the winning nomination.
4. The award will be given out at the summer PSLAC Annual Bar-B-Que.
5. Nominations will be due by April 30th.

The nomination should give reasons and examples why the nominee should receive the award.

How have they helped further the craft?

Are they active in PSLAC activities?

Do they help promote leather craft by fair entries, demonstrations, etc?

Have they helped generate interest in others to pursue the craft?

Are they willing to share knowledge for the benefit of all?

Continued from page 7

this year as we have a couple of old friends from Canada coming to join us for the Chan Geer workshop and annual Picnic, also a visitor from Australia, another from the Tri-Cities and one from Hawaii. Talk about international and widespread!!

See you all at the meeting.
Len Madison
Workshop Coordinator.

PSLAC Members Only Advertisements

Any PSLAC Member can advertise leather related products or services subject to approval. Just send your text, pictures and/or logo to webmaster@pslac.org



Sea Leather Wear

Genuine Fish Leather Skins

For the custom manufacturing of shoes, handbags,
and all sorts of apparel and accessories

Offering a 10% discount to the PSLAC members

<http://www.sealeatherwear.com>
Customerservice@sealeatherwear.com
Skype: sealeatherwear
Calgary, Alberta, Canada



Stanley Major
403-689-4701



Leather Accents

Custom Stitching Horses & Clams
John Wickstrom—Maker

*Beautiful handcrafted wood Call
for information 360-456-1688*



Leather Big Book¹ Covers

www.leatherbigbookcovers.com
by Bob Stelmack,
Desert Leathercraft LLC

*Let your imagination run
wild and have a Custom
Leather Big Book¹ Cover
made for you. The covers
will be “one-of-kind” and
are quite striking.*



The Big Book is a registered trademark of
Alcoholics Anonymous World Services, Inc.

PSLAC Members Only Advertisement Page

Any PSLAC Member can advertise leather related products or services, subject to approval. Just send your text, picture and/or logo to webmaster@pslac.org



MARQUIS UNIQUE LEATHER ARTISTRY, LLC

I make almost anything that can be made from leather and can be sewn by hand. A lot of my works are 'bespoke items', meaning, one of, individual custom requests, ranging anywhere from books and folders to rifle scabbards, holsters and golf bags, fully carved and stamped, and any and all articles in between, which also includes moulded bowls and pictures.

Phone: (206)-523-6295

E-mail: marquispg@aol.com

www.marquisuniqueleather.com



Black Horse Leatherworks & Saddlery specializes in high quality & unique custom western tack and apparel. We make some English items such as Schooling chaps & Stall items. We make all our leather items one at a time, by hand per our clients specifications.

C.E. Gessell, Owner

Our Motto: If you can imagine it... we can create it!

Fantastic Leather Burnisher

- ▶ New and Improved
- ▶ Faster than ever
- ▶ Cuts burnishing time by 90%
- ▶ Improves quality and appearance
- ▶ Consistent finish in a single pass
- ▶ New products available



For more information call 509-946-4247
View our eBay Store:
<http://stores.ebay.com/scentofleather>
Visa & Mastercard orders accepted by phone

New Edge Finishing System Available

DIAMOND P LEATHER SHOP PHIL O'NEILL

Saddlery: New, Used-Repair
Custom Made Leather Goods
25051 - 180 Ave SE, Kent WA 98042
Hours By Appointment Or By Chance
(253) 631-9770

This Is A One-Man Outfit
All Custom & Repairs Are Crafted By Myself
E-mail: wsubarbara@gmail.com

Custom Maker Stamps Grey Ghost Graphics By Jeff Mosby

Custom maker stamps, laser cut acrylic templates and custom tapoffs for the leather craft field. Custom cut from your artwork at reasonable rates!

P.O. Box 30268, Myrtle Beach, SC 29588
(866) 205-9810 or (843) 903-4788

www.greyghostgraphics.com



Norm Lynds, Toolmaker

Mallets, Modelers, embossing tools, lifters and others on request

Phone: (425) 357-1001

E-mail: sagerat2003@yahoo.com

Leather Big Book Covers
www.leatherbigbookcovers.com
by Bob Stelmack,
Desert Leathercraft LLC

Leather Company Advertisement Page

Support our sponsors and take advantage of the PSLAC Membership Discounts...

Tandy Leather Factory

The Leather Factory #21 PORTLAND
Toll Free: 888-277-3360
13221 NE Whitaker Way Portland, OR 97230

Tandy Leather #126 SEATTLE
Toll Free: 866-220-9698
14713 Aurora Ave N Seattle, WA 98133

The Leather Factory #09 SPOKANE
Toll Free: 800-822-8437
28 W Boone Ave Spokane, WA 99201

Tandy Leather #124 TACOMA
Toll Free: 888-222-0510
13819-C Pacific Ave South Tacoma, WA 98444

FERDCO



In the US - Contact Ferdco Toll Free
@ 1-800-645-0197
International - 1-208-689-3006
Fax - 1-208-689-3008
E-mail - ferdco@smgazette.com

Offering a discount to the PSLAC members of a 10% off of any parts and supplies ordered and 2% off of any equipment (sewing machines ,etc.)



Toll Free:
(800) 541-3264
**Bee Natural
Leather-
care**
*The ultimate in
leather care prod-
ucts*

P.O. Box 820803, Vancouver, WA, 98682-0018
(360) 891-7178 , FAX: (360) 891-7166
E-mail: bnatura@pacifier.com

Outside Washington
1-800-343-9949

(206) 328-0855
Fax: 328-0859

MACPHERSON

Leather Company

Leather, Shoe Finding and Saddlery

Offering a 30-40% off retail discount to the PSLAC members

519 - 12th Avenue S.
Seattle, Washington 98144

GLOBAL LEATHERS



Web site: www.globalleathers.com
Telephone : 212-244-5190
Fax : 212-594-7515
E-mail: globalleathers@usa.net
Paul Crystal

Offering a discount to PSLAC members

BRETTUNS VILLAGE LEATHER

Selling odd lots, miscellaneous overstocks,
bargain leathers and leathercraft
accessories, all from Maine, only online

Sides, Full Hides, Buckles, Key Rings, Laces, Thread,
Tools, Rivets, Scrap Pieces, Elk & Buffalo Scrap

Always Free Shipping in the 48 States

www.brettunsvillage.com

Steve Derricott



Twister D Products
301 E. Bower St.
Meridian, Idaho 83742
(208) 884-3766 - Fax (208) 884-3767
A Division of Gfeller Casemakers, Inc.
www.lacemaster.com

Offering a 10% discount to the PSLAC members

Leather, Suede, Skins, Inc.



261 West 35th Street
11th Floor, New York, NY 10001
Tel: (212) 967-6616
Fax: (212) 564-5759
www.leathersuedeskins.com
Email: leather.suede.skis@att.net

Offering a 10% discount to the PSLAC members



Dusty Johnson

PLEASANT VALLEY SADDLE SHOP
1220 S. County Rd. 21
Loveland, CO 80537
Phone: (970) 669-1588
Fax: (970) 669-1589
E-Mail: dusty@pvsaddleshop.com
URL: <http://www.pvsaddleshop.com>

Offering a 20% discount to the PSLAC members

RawHide Gazette

Editor/Publisher : Roger Kaiser
Co-Founders: Bill Churchill & General Seymour
Treasurer/Secretary: Barbara Lourdes
Directors: General Seymour, Ken Erickson, Len Madison, Roger Kaiser & Paula Marquis

The **RawHide Gazette** is published monthly (12 times a year). Address for information and correspondence: PSLAC, c/o Barbara Lourdes, PO Box 1144, Auburn, WA. 98071, USA
E-Mail: Billing@pslac.org

PSLAC Membership:
"a" - Internet access to **RawHide Gazette** including Member only area & meeting attendance \$10/year. (1 Person)
"b" - US Postal Mail **RawHide Gazette** including new Member articles & meeting attendance \$24/year. (1 Person)
"c" - Internet access to **RawHide Gazette** including Member only area & meeting attendance \$15 per year. (Family)

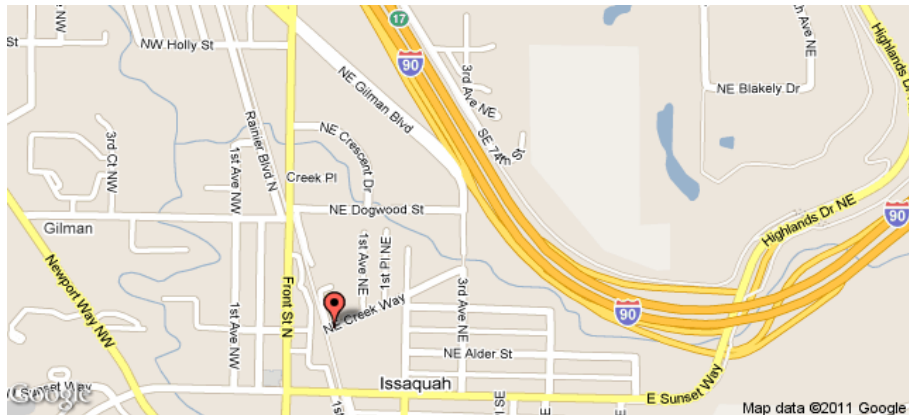
All submissions are subject to editing for clarity and length. All articles submitted must be accompanied by name, address and permission of writer

Advertising Rates

The **RawHide Gazette** offers advertising space to interested parties. Ad spaces are as follows:
1/4 Page or Business Card.....\$60 USD
1/2 Page.....\$110 USD
1 Full Page.....\$200 USD

These rates cover a six month time period. PSLAC members are entitled to a 25% discount. Leather companies supporting PSLAC are given free Business Card size advertisement, additional space at regular rates.

The Puget Sound Leather Artisans Co-Op can be found at:
<http://www.pslac.org>



Taking I-90

From Auburn: North on Hwy 167 or I-5, then I-405 North, then onto I-90 Eastbound:

From Everett: South on I-5 to I-405 South, or to I-90 Eastbound:

From I-90 Eastbound: get off on exit 17/ Front St., turn right onto Front Street. At the third stoplight, turn left onto E. Sunset Way and see below:

Taking Hwy 18 from Auburn, Covington, Maple Valley to Issaquah:

Get on Hwy 18 Eastbound, about 2 1/2 miles after Maple Valley exit take the Issaquah-Hobart exit. Follow signs (left) to take Issaquah-Hobart Road to Issaquah (about 8 1/2 miles). Issaquah-Hobart Road

becomes Front Street. In Downtown Issaquah turn right onto E. Sunset Way and see below:

After Turning onto E. Sunset Way:

Go two blocks (past Police and Fire station), turn left onto 2nd Ave SE, go past the old Senior Center building and a baseball field on your left. Turn left onto NE Creekway, go about 1 block. The Issaquah Valley Senior Center is a brick building on your left, parking in front of it. There is also parking behind from E. Sunset turn left into the parking lot just before the Police station (look for a large parking sign on your left) and follow it until you see a kids playground. **Address 75 NE Creekway, Issaquah WA 98027**

PSLAC
c/o Barbara Lourdes
PO Box 1144
Auburn, WA 98071
USA

