

RawHide Gazette

"Without question, the RawHide Gazette is by far the best and most informative and comprehensive Guild publications of all of them! You are to be commended for your very fine and professional efforts. Keep up the good work. With admiration"

/signed/

Al & Ann Stohman, December 1997

Copyright © 2012 by PSLAC, All Rights Reserved

Puget Sound Leather Artisans Co-Op

September 2012

Hide Highlights

Page

1-3 John Bianchi Book

4 Pendleton Leather Show

4 Editorial

5-6 Boy Scout Leatherwork

6 2013 Tandy Catalog

7 Leather Accents Stitching
Clams and Horses

8-9 Colt Model 1911

10 Graycloud Designs

11 & 12 PSLAC Schedules

13 Free Leatherworking
classes at Spokane Tandy

**Next Meeting on
Sunday October 14th
at 1:00 PM**

General meeting starts at 1:00
followed by the Demo (see schedule
on page 12 for details)

Meet at The Issaquah Valley Senior
Center Address 75 NE Creekway,
Issaquah WA 98027
(See last page for map)

John Bianchi Book Cover



John Bianchi, Chan Geer and Paula Marquis

For the past 8 years John Bianchi has been teaching a holster making class in Wickenburg, Arizona. This class was part of the leather show sponsored by the Leather Crafters Journal.

John started making holsters in his garage over 40 years ago when he was a police officer for the Monrovia, CA P.D. His reputation for quality grew and he started making holsters and other leather gear professionally. His company grew through a few different names until it became the largest holster and accessory manufacturing company in the world, Bianchi International, located in Temecula, CA. A few years ago John decided to turn over the reins of the company and retire. Apparently bored, he started a company Frontier Gunleather www.frontiergunleather.com specializing in Western style.

Continued on next page

Just a few more of his many accomplishments:

- He rose to the rank of Major General in the Army Reserve, being appointed as commandant of several different posts.
- For over 30 years he has sponsored the Bianchi Challenge (better known as the Bianchi Cup), which is one of the highest acclaimed annual speed shooting competitions for handguns.
- John founded the Frontier Museum which is located next to the Bianchi International plant in Temecula.
- He was also very involved in the successful completion of the Gene Autry Western Heritage Museum which is located in Visalia, CA



**Nikki and John Bianchi with
Chan Geer and Paula Marquis**

The classes are taught by John and two of his assistant instructors Matt Whitaker, who is the General Manager of Frontier Gunleather, and Travis Luz who has his own leather company in Durango, Colorado. Both of these men have been trained by John and have been with him for many years. Together they hold the three day workshop in which the students are taken all the way through the concept of design of holsters and belts, pattern making (another class), selection of leather, layout, cutting tools and specialized tools. The class continues through the construction, assembly, sewing, fitting, and finishing. At the completion of the third day the students have a completed rig.



**Opening the
package.**

**Will John
like it?**

The classes have approximately 25 students and perhaps five have attended five or more of the sessions. Paula has attended six of the eight. She hand stitches all of her projects, due to some disagreement with a sewing machine very early on in her career. She has to put in after hours time to be able to complete her project by the end of the session.

Paula has wanted to do something special for John for a couple of years. A very nice coffee table biography of John was published two years ago. Aha! Paula is also an excellent book-

Of course he does!





Front—Paula’s carving

binder. John likes to personalize the signing of books that are purchased at the workshop. I am unaware of just how it happened, but three people—John’s wife Nikki, Paula Marquis and Chan Geer—put their heads together for the project. Paula was to do a portrait carving on the front cover and Chan an oval floral carving which would be inset in the rear cover. Paula would then replace the interface paper, front and back, and rebind the book with the carved leather cover.

Needless to say, the resulting project was absolutely beautiful. The three collaborators presented the book to John at the completion of the 2012 Wickenburg Workshop. He was very surprised and extremely appreciative of the thought and work that was put into this project.
-Norm

Back—Chan’s carving



Pendleton Leather Show—November 8-10 2012

November will be here before you know it, so please consider attending the Pendleton Leather Show, November 9-10, 2012. Held in historic Pendleton, Oregon at the Convention Center, this trade show features an expanded vendor base and many new classes. There is no admission fee, but a stop at the registration desk is required. The classes begin on November 8th, and finish up the 10th. We are utilizing many new teachers and subjects in addition to a few free demonstrations or seminars.

Please visit www.pendletonleathershow.com for all the information regarding the show, classes, vendors and accommodations.

You may also view and purchase the classes at http://www.sheridanleather.com/category_s/1866.htm

We can only improve this show, servicing the Pacific Northwest, by increasing attendance and vendors—and we would love to see you there!

Vandy Douglas
Sheridan Leather & Douglas Tools
307-674-6679
www.sheridanleather.com

Editorial and other stuff

Here we go, Rockin' and Rollin' with the latest issue of the **RawHide Gazette**. I'm fairly sure I must be getting old 'cause the days just seem to race by and it seems like I have more and more "young folks" surprised when they hear my car booming with Billy Idol or the like (I do have a fairly good sized sub woofer). Hmmmm. Leather crafters are an aging group so I challenge you to think about how to get a youngster involved. One great way is to get them into the stores that offer free or low cost instruction. The future of this art form lies with the youth. Our responsibility is to interest them in the craft. For example, handbags and other leather accessories have the ability to capture the interest of most teen and young adult women—we can use that! We may not be talking tooled in the conventional sense (Western Floral), but perhaps in the design, construction, use of unusual or exotic skins and coloring.

In my travels about the Internet I occasionally find some interesting things—here's a leatherworkers website to check out <http://www.emilgatev.com>. You can take a virtual tour of his shop (near the bottom of the about page) and view some of his very interesting designs.

The Pendleton Leather Show is promising to be great this year with Sheridan Leather producing the show. But there is other news, Ferdco has closed it's doors as of June 5th. As many know, in the past, Ferdco produced the Pendleton show—The leather community will certainly miss them!

Check out Sea Leather Wear, their fish leather is absolutely fantastic! I highly recommend these beautiful, exotic skins. Check out the sample packs as a great way to see what is available.
<http://www.sealeatherwear.com/samplers-c-27.html> By the way, they really are odorless!

As always, any articles, tips, hints, photos or other information you have for the **RawHide Gazette** can be sent to webmaster@pslac.org

-rog-

Roger Kaiser – Editor

Boy Scout Leather Work

I was pleasantly surprised when the Senior Patrol Leader of my local Troop (Troop 594) approached me to have a couple of Troop Meetings where the boys could do leather craft. He wanted to know what they could do in the short time available since there is only about an hour and a quarter left after opening and closing ceremonies. Out of the 35 boys in the Troop, only two did not have the Leather-working Merit Badge. So we decided to have some fun with leatherwork and those two boys would get most of the requirements by simply participating. We told all the boys to bring their pocket knife to the meeting so we could fit it to a knife pouch kit.

I still had about 20 of the kits from the 60 or so I had purchased several years ago for a summer camp. That wouldn't be quite enough for this exercise so off I went to my local Tandy store to purchase some bulk knife kit packs—both sizes. I was somewhat disappointed to see Tandy now pre-installs the snap on the kits. This one size fits all approach doesn't allow the youth to see how to size the flap to their own knife.

At the first meeting, I showed

the boys tools, patterns, books and samples in a whirlwind of frantic bouncing from one thing to the next. After about 10-15 minutes we talked about safety and then split the group in half. Debbie, along with a couple of adult volunteers, took one half



and led them through neckerchief slide construction. *See the April 2011 Rawhide Gazette for the article on this type of slide.* The boys marked the pattern, cut, stamped, punched holes, edged and applied finish. Only a few missteps, errors and no blood—piece of cake! While that was going on I took the other half and had them choose the appropriate sized knife kit. I showed them some stamps they could use, quick instruction on the saddle stitch and off we went—

absolute anarchy, but the boys had a great time. At the second meeting, we had the groups swap. Once the slides were done everyone worked on their knife kits.

All in all, it went well, although I think this size of group was too large for just a couple of instructors. It is probably better to make this a patrol type activity where 4-10 youth are taken through the process in a couple of 2-3 hour sessions. Knife pouches and slides seem to be a perfect fit to keep the interest up and provide something the boys can take away.

A couple of hints: we used folding utility

knives to cut the pattern and had an adult supervising each boy as they cut the leather. There was a slight back log at the cutting



station—but no injuries is a good thing! We used a tabletop drill press with a wood slicker chucked up to edge. Again we had an adult hovering to make sure the youth were obeying safety rules and being careful.

We had a couple of sisters at the meetings and I'm pretty sure Debbie helped them make some barrettes and other girl things. I'd suggest if you are going to put on a demo like this, make sure you have something available for siblings and adults to do. -rog-



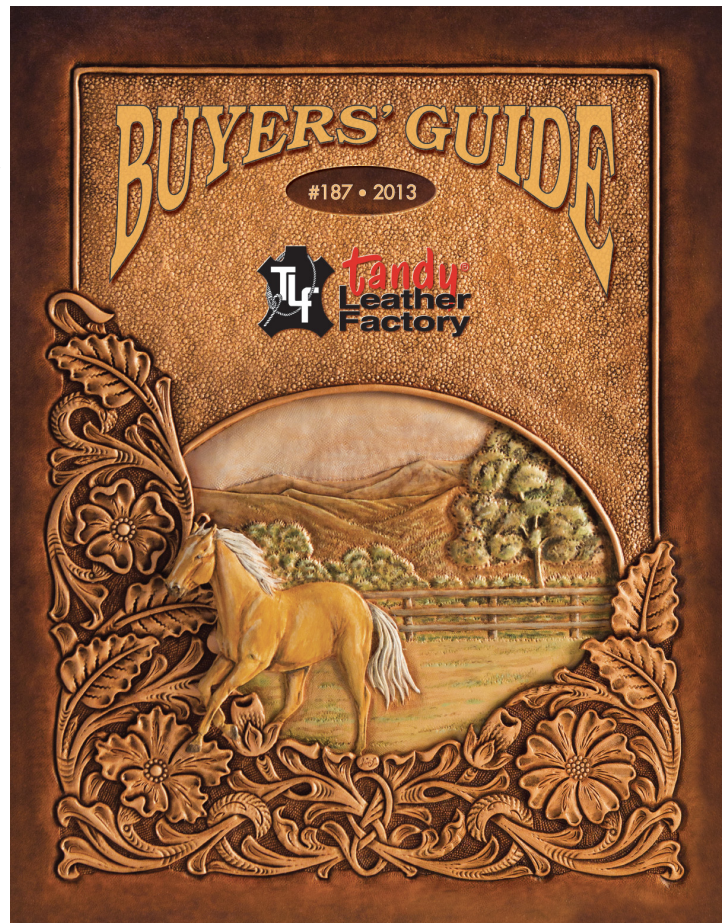
Tandy Press Release:

Tandy Leather Factory has announced the publication of their 2013 Buyers' Guide. This 172 page buyers' guide contains more than 295 new items for the leather craftsman. Included in the group of new items are: handbags, messenger and brief case kits, 28 new 3-D stamps, 37 stainless steel stamping tools, new professional swivel knives, new water based contact cements, edge finishes, and many more items for the avid leathercrafter. Whether you are a professional craftsman or just need to repair leather gear, you will find what you need in this new buyer's guide.

For more information or to request a copy, contact your local Tandy Leather Factory store, visit them online at www.tandy Leather Factory.com or write to 1900 SE Loop 820, Fort Worth, Texas 76140.

Thank you,
Jim Linnell

National Advertising Manager
Tandy Leather Factory
jlinnell@tandy Leather Factory.com – Email
www.tandy Leather Factory.com – Website
tandy Leather Factory.wordpress.com – Blog
facebook.com/tandy Leather Factory – Facebook
twitter.com/tandy Leather Factory – Twitter



Leather Accents—Custom Stitching Horses and Clams

John Wickstrom has been making custom stitching horses and clams for several years now. A number of the Seattle area PSLAC members have purchased these superbly crafted items. I own both and have used them extensively. As anyone who has seen them will attest, these are works of art, hand crafted and finished with quality that has to be seen to be fully appreciated. -rog-

E-Mail from Ken Bush:

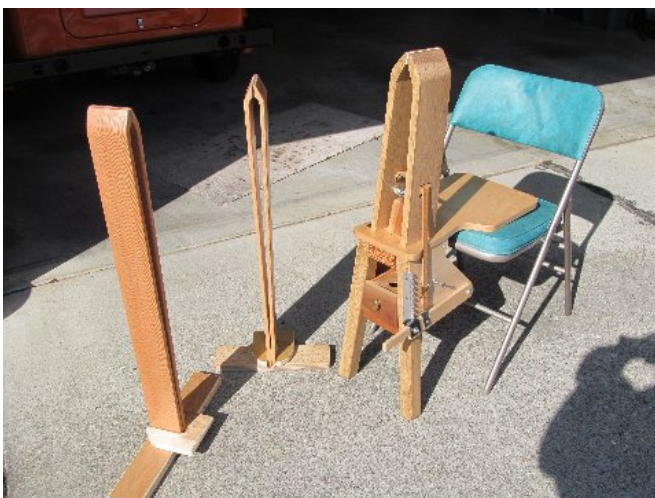
For those of you who attended Chan Geer's last class, Chan brought along one of John's new stitching clams. There also was a Clam at the Peter Main class where Peter checked it out and made some suggestions for John to incorporate. I tried it out during the class and can recommend it as a really good concept as well as workmanship. I just bought the one on the left this morning. *See the picture with two Clams and one chair version.* The Clam is \$82 plus tax.

The chair version is made from solid white oak (left picture below) and is \$250 plus tax. If any of you want one, John will be selling them at the Pendleton Leather show (no tax) in November. -ken



Peter prefers to stitch with the work near eye level—Less strain for him.

**John uses many types of wood for his
Stitching Horses and Clams**



Colt Model 1911

This article will honor another of John Browning's inventions, the Colt Model 1911. In the early days of the 20th Century the U.S. found itself involved in a skirmish in the Philippine Islands as part of the "Spanish American War" if memory serves me right. I will leave out the gory details, but suffice to say that the Colt 38 caliber revolver, the issue handgun at the time, was insufficient in stopping the charging Moros.

For several years the feeling by some of the senior Army officers, for military service, was that the superiority of the semi-automatic pistol over the revolver would prevail. With the failure of the 38 cartridge, a larger sized bullet was desired which would deliver more kinetic energy, thus more stopping power. The .44 and .45 caliber rounds in the Colt and Smith & Wesson revolvers had proven themselves over the years.

Specifications and requirements were sent out to gun manufacturers to submit samples for testing. The cartridge settled on was the .45 ACP (.45 caliber Automatic Cartridge Pistol), which basically was a shortened .45 Colt cartridge case, with the rim recessed at the bottom of the cartridge instead of extending out. The description of the two terms, rimmed

(example: .38 Special) and rimless (.45 ACP).

With Browning's patents, Colt had been developing semi-automatic pistols for several years, with the first commercial success being the Model 1900, in Caliber .38 ACP. This had previously been submitted for testing by the military, but at that time they felt it had not yet been sufficiently developed. Later the Model 1902 was sub-



**Colt
Model 1911
Gold Cup**

mitted for testing. This one was also in .38 ACP. It was accepted and produced in two versions, the Military and the Sporting (civilian). The Sporting model was in production from 1902 until 1908 and the Military model from 1902 until 1929. A slightly modified version (shortening the barrel and slide) was brought out as the Model 1903. Approximately 18,000 of these two models were made up until 1929.

With the above background in semi-automatic production, Colt redesigned the Model 1903 by beefing it up, chambering it for the .45 ACP and submitted it

for testing. Several manufacturers entered the competition, and after the initial phases, Colt and Savage were selected for further development and testing.

About five years was spent testing and developing the pistols until final selection of the Colt was made. During this development and testing time the pistols were tested not only by the factories and military ordinance departments, they were handed out to the troops for use and

testing. All those involved had a hand in the development. At the end of the testing period both the Colt and Savage pistols, which had been developed in the intervening years, passed all the requirements. The Board, which tested and made the final decision, stated: "As a result of the test both pistols are thought by

the Board to be of suitable balance, weight, caliber, energy, accuracy, simplicity and safety for use in the military service." The Savage pistol fulfills the requirements originally imposed as vitally essential for military hand arm, but in the language of the Board, "Of the two pistols the Colt's is superior, because it is more reliable, the more enduring, the more easily disassembled when there are broken parts to be replaced and the more accurate."

With that and a few more comments the Board made it's recommendation that the U.S.

continued on next page

Military adopt the final product of the years of testing and development. On March 29, 1911 the Colt Model 1911 was adopted for service by the U.S. Military services. It has been in continuous service now for over 100 years and appears to be there for many more years to come. It has been present in every conflict that the U.S. has been involved in from 1911 until today, but today probably only by Special Ops guys in the military. It is the duty weapon of many in federal, state, and local law enforcement as well as the weapon of choice for many who are authorized for CCW.

It is one of, if not the most popular weapon of choice in just about all disciplines of competitive shooting, if a choice is offered.

It is the longest produced, most copied, most modified, most produced with several millions being made, most reliable in all aspects, and one of, if not the most desired pistol ever made. Several major manufacturers along with several minor ones offer a variety of different 1911 models. The price can vary from about \$400 for a bare bones model up to about \$2,000 for an upper production model. Then, enter the custom field and the price can go much higher. One catalog I have goes up to \$7,000, but the normal range for this custom maker is between \$2,000 and \$2,500.

My introduction to the Model 1911 occurred one day when an uncle showed up at our farm and produced his. He was a veteran, having spent most of his Navy career as a CB (Construction Battalion) member doing their thing throughout the South Pacific during WWII. My uncle pulled out this pistol, which was kind of greenish parkerized color. When he showed it to me he demonstrated how to check it for safety, the controls, how to load



**Colt
Model 1911
Custom Carry**

it, hold it and squeeze the trigger. (I was very familiar with my .22 rifle, but at this point not that familiar with handguns.) Looking for a target, there were some apples hanging on a tree and I selected one (there was a hillside in the background for a backstop), aimed, squeezed the trigger and the apple exploded. My very first shot. Needless to say I was hooked on the 1911.

Two of my favorites in my collection are a Gold Cup, which is Colt's target model, and a custom gun I had made to carry. I haven't fired the Gold Cup much, wanting to keep it in as pristine condition as possible

for the 40 years or so that I've owned it. The others though have had many thousands of rounds shot through them.

When it came time to build a custom gun, I took the parts I had collected to a gunsmith in Hayward, CA, Earl Stroup. Using some of my parts and some of his, we came up with the pistol I desired. Requirements were reliability first, accuracy second. He exceeded expectations in that I got both. He

milled the slide to accept the Gold Cup adjustable rear sight, but instead of having the sight blade at the rear of the slide he placed it in the slot made to house the old fixed sight. This places the sight blade about 1/4 inch in front of the rear of the slide, and with the corners rounded over, your arm is protected much more from being

scratched by the sight blade. I really have appreciated this over the years.

The holsters that these guns have been carried in run from the military flap holster through cross draw, straight draw, center of the back, inside the pants, shoulder harnesses, pancake, and others that skip my mind at the moment. Prices can vary as much as the models, from about \$20 to well over \$250 for a very nice rig.

Desirable as it is, the Model 1911 is definitely NOT the pis-

continued on next page

Continued from page 9

tol to start a shooting career with. That topic will be covered in another article.

There you have a very short history of the Colt Model 1911, which is without a doubt, the finest defensive handgun ever developed, along with a short history of my many years of experience with it.

-Norm

Last year we started a series of articles on the history of firearms. The first article was about the Winchester Model 94. This is the second article, about the Colt Model 1911. Throughout their history, firearms and leather have been intertwined. Just a few uses of leather with firearms are: it was used to hold the flints in the locks of flintlock firearms, slings, scabbards, holsters, belts, cartridge boxes, bandoleers, cheek pieces, scope covers, and gun cases. Please give us your comments about these articles.—Norm

Robb Gray — Graycloud

Robb Gray is a local (Seattle area) artist and active member of PSLAC. He often has his latest designs at the North end breakfast. He's been featured in several magazines and has won national awards for his work. This year he set up a booth at Sheridan. Check him out at: <http://graycloud-designs.com/>

Graycloud Booth at Sheridan



**Robb Gray
(Graycloud)**

**Displaying his custom knives
at Sheridan**



Western Washington (Seattle/Tacoma/Everett)
PSLAC CURRENT SCHEDULE FOR 2012

General Member's meetings are on the 2nd Sunday of each Month unless specified below. 1:00 PM to 4:00 PM approx.

- Meetings held at Issaquah Valley Senior Center, 75 NE Creek Way, Issaquah, WA 98027 General meeting start at 1:00 PM followed by the mini-demos

Breakfast informal get-together locations:

North Breakfast >>> Last Friday of the month at 10:00 AM. Lake Forest Park Town Centre. 17917 Bothell Everett Hwy, Bothell, WA 98012 Bothell Way N, bordered by 170th N. & Ballinger Way N. Meet in the Third Place Books eating area

South Breakfast >>> 3rd Saturday of the month at 8:30 AM. Oscar's Restaurant, 8726 S. Hosmer St., Tacoma, WA

All Day Workshops:

Dates: TBD (watch this space)

Time: TBD (watch this space)

Location: TBD (watch this space)

Eastern Washington (Tri –Cities) Desert LeatherCraft Group (DLG)
PSLAC CURRENT SCHEDULE FOR 2012

Tri-Cities Desert LeatherCraft Group Member's meetings are on the 3rd Saturday of each month unless specified below:

- Informal meetings held at 2532 Banyon St., Richland, WA 99352 (Call Bob at 509-392-2589 for directions). Google Map reference +46 16' 19.20", -119 18' 32.40"

Eastern Washington (Spokane) PSLAC East
PSLAC CURRENT SCHEDULE FOR 2012

PSLAC East Member's meetings are on the 2nd Saturday of each Month unless specified below. 10:00 AM to 1:00 PM approx.

- Informal meetings held at Spokane Tandy Leather Factory Store, 28 West Boone Ave. Spokane WA 99201 Contact Ken Bush for time, date (normally the 2nd Saturday) & details.

Ken Bush
White Rose Leather
11923 E. Fairview Ave.
Spokane Valley, WA 99206
whiterosex@aol.com 509.926.2087

All Day-Workshop Schedule for 2012:

PSLAC East: I have 7 people signed up for the Wallet class (which is a pay class, Fee includes materials) There is a spot for one more student. The class will be held Friday the 26th and Saturday the 27th of October. I will send out a tool list directly to the enrolled students.

Any questions please contact me at leather_art@hotmail.com subject: Wallet Class

Thanks, woody

Mini-Workshop Schedule for 2012: Start about 1:30 after the general meeting at 1:00

October 14 Tool Roll construction: The club has suede leather available to make tool rolls for all attendees. You can have any color you like as long as it is Forest Green. Bring your stamping tools if you'd like to make a custom size or you can just make it for the number of stamps you prefer. There will be sewing and construction demonstrated for this project so bring a ruler, wing dividers, hand sewing supplies, stitching ponies, clams and the like. The club will have a couple of cutting surfaces and straight edges to use. Australian Stranders or strap cutters would be useful for cutting the ties.

November 11 Personal Stereo Ear Bud Case with Ken Erickson: Ken has designed a small case to hold his ear buds. There has been discussion of changing the project to a sunglass case of Ken's design. Please let him know if you have a preference. There will be sewing and construction demonstrated for this project.

December 9 Segmented Belt with Len Madison: Len has been working on duplicating a girls belt that was found in a garage sale. This demo promises to be quite interesting. Len had to purchase a quantity of the oval leather pieces and will take orders for anyone wanting to make a belt.

Yearly General Meeting Schedule for 2012-2013: Issaquah Valley Senior Center

October 14 1:00—4:00 PM Craft Room General meeting followed by the Mini-Workshop on the Tool Roll. PSLAC is supplying the leather—you just need to build it.

November 11 1:00—4:00 PM Craft Room General meeting followed by the Mini-Workshop on the Personal Stereo Ear Bud Case.

December 9 1:00—4:00 PM Craft Room General meeting followed by the Mini-Workshop on the Segmented Belt .

January 13 1:00—4:00 PM Craft Room General meeting followed by the Mini-Workshop— looking for Demo suggestions for January.

February 10 1:00—4:00 PM Craft Room General meeting followed by the Mini-Workshop— We are planning our customary February meeting at MacPherson's Leather.

March 10 1:00—4:00 PM Craft Room General meeting followed by the Mini-Workshop— looking for Demo suggestions for March.

Free Classes at your local Tandy Leathercraft Stores:

Spokane Store

The PSLAC-East leather classes at the Spokane Tandy store will be on the 1st Saturday as usual on **Oct 6th from 10 AM to 12:30 PM**. For those who are advanced we will do a pattern similar to the September class. As always there will be patterns for beginners.

Bring tools if you have them. We have a few loaners and Cheryl will be more than happy to help you when checking out what the store has to offer.

PSLAC Members Only Advertisements

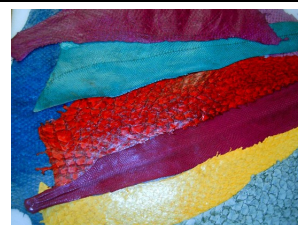
Any PSLAC Member can advertise leather related products or services subject to approval. Just send your text, pictures and/or logo to webmaster@pslac.org



Sea Leather Wear Genuine Fish Leather Skins

For the custom manufacturing of shoes, handbags,
and all sorts of apparel and accessories

Offering a 10% discount to the PSLAC members



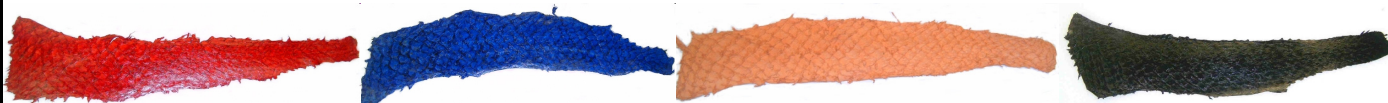
<http://www.sealeatherwear.com>

Customerservice@sealeatherwear.com

Skype: sealeatherwear

Calgary, Alberta, Canada

Stanley Major
403-689-4701



Leather Accents

Custom Stitching Horses & Clams

John Wickstrom—Maker

*Beautiful handcrafted wood Call
for information 360-456-1688*



Leather Big Book¹ Covers

www.leatherbigbookcovers.com

by Bob Stelmack,

Desert Leathercraft LLC

*Let your imagination run
wild and have a **Custom
Leather Big Book¹ Cover**
made for you. The covers
will be **"one-of-kind"** and
are quite striking.*



The Big Book is a registered trademark of
Alcoholics Anonymous World Services, Inc.

PSLAC Members Only Advertisement Page

Any PSLAC Member can advertise leather related products or services, subject to approval. Just send your text, picture and/or logo to webmaster@pslac.org



MARQUIS UNIQUE LEATHER ARTISTRY, LLC

I make almost anything that can be made from leather and can be sewn by hand. A lot of my works are 'bespoke items', meaning, one of, individual custom requests, ranging anywhere from books and folders to rifle scabbards, holsters and golf bags, fully carved and stamped, and any and all articles in between, which also includes moulded bowls and pictures.

Phone: (206)-523-6295

E-mail: marquispg@aol.com

www.marquisuniqueleather.com



Black Horse Leatherworks & Saddlery specializes in high quality & unique custom western tack and apparel. We make some English items such as Schooling chaps & Stall items. We make all our leather items one at a time, by hand per our clients specifications.

C.E. Gessell, Owner

Our Motto: If you can imagine it... we can create it!

Fantastic Leather Burnisher

- ▶ New and Improved
- ▶ Faster than ever
- ▶ Cuts burnishing time by 90%
- ▶ Improves quality and appearance
- ▶ Consistent finish in a single pass
- ▶ New products available



For more information
call 509-200-9353
View our eBay Store:
<http://stores.ebay.com/scentofleather>
Visa & Mastercard orders accepted by phone

New Edge Finishing System Available

DIAMOND P LEATHER SHOP PHIL O'NEILL

Saddlery: New, Used-Repair
Custom Made Leather Goods
25051 - 180 Ave SE, Kent WA 98042
Hours By Appointment Or By Chance
(253) 631-9770

This Is A One-Man Outfit
All Custom & Repairs Are Crafted By Myself
E-mail: wsubarbara@gmail.com

Custom Maker Stamps Grey Ghost Graphics By Jeff Mosby

Custom maker stamps, laser cut acrylic templates
and custom tapoffs for the leather craft field.
Custom cut from your artwork at reasonable rates!

P.O. Box 30268, Myrtle Beach, SC 29588
(866) 205-9810 or (843) 903-4788

www.greyghostgraphics.com



Norm Lynds, Toolmaker

Mallets, Modelers, embossing tools, lifters and
others on request

Phone: (425) 357-1001

E-mail: sagerat2003@yahoo.com

Leather Big Book Covers
www.leatherbigbookcovers.com
by Bob Stelmack,
Desert Leathercraft LLC

Leather Company Advertisement Page

Support our sponsors and take advantage of the PSLAC Membership Discounts...

Tandy Leather Factory

The Leather Factory #21 PORTLAND
Toll Free: 888-277-3360
13221 NE Whitaker Way Portland, OR 97230

Tandy Leather #126 SEATTLE
Toll Free: 866-220-9698
14713 Aurora Ave N Seattle, WA 98133

The Leather Factory #09 SPOKANE
Toll Free: 800-822-8437
28 W Boone Ave Spokane, WA 99201

Tandy Leather #124 TACOMA
Toll Free: 888-222-0510
13819-C Pacific Ave South Tacoma, WA 98444

FERDCO



In the US - Contact Ferdco Toll Free
@ 1-800-645-0197
International - 1-208-689-3006
Fax - 1-208-689-3008
E-mail - ferdco@smgazette.com

Offering a discount to the PSLAC members of a 10% off of any parts and supplies ordered and 2% off of any equipment (sewing machines ,etc.)



Toll Free:
(800) 541-3264
**Bee Natural
Leather-
care**
*The ultimate in
leather care prod-
ucts*

P.O. Box 820803, Vancouver, WA, 98682-0018
(360) 891-7178 , FAX: (360) 891-7166
E-mail: bnatura@pacifier.com

Outside Washington
1-800-343-9949

(206) 328-0855
Fax: 328-0859

MACPHERSON

Leather Company

Leather, Shoe Finding and Saddlery

Offering a 30-40% off retail discount to the PSLAC members

519 - 12th Avenue S.
Seattle, Washington 98144

GLOBAL LEATHERS



Web site: www.globalleathers.com
Telephone : 212-244-5190
Fax : 212-594-7515
E-mail: globalleathers@usa.net
Paul Crystal

Offering a discount to PSLAC members

BRETTUNS VILLAGE LEATHER

Selling odd lots, miscellaneous overstocks,
bargain leathers and leathercraft
accessories, all from Maine, only online

Sides, Full Hides, Buckles, Key Rings, Laces, Thread,
Tools, Rivets, Scrap Pieces, Elk & Buffalo Scrap

Always Free Shipping in the 48 States

www.brettunsvillage.com

Steve Derricott



Twister D Products
301 E. Bower St.
Meridian, Idaho 83742
(208) 884-3766 - Fax (208) 884-3767
A Division of Gfeller Casemakers, Inc.
www.lacemaster.com

Offering a 10% discount to the PSLAC members

Leather, Suede, Skins, Inc.



261 West 35th Street
11th Floor, New York, NY 10001
Tel: (212) 967-6616
Fax: (212) 564-5759
www.leathersuedeskins.com
Email: leather.suede.skins@att.net

Offering a 10% discount to the PSLAC members



Dusty Johnson

PLEASANT VALLEY SADDLE SHOP
1220 S. County Rd. 21
Loveland, CO 80537
Phone: (970) 669-1588
Fax: (970) 669-1589
E-Mail: dusty@pvsaddleshop.com
URL: <http://www.pvsaddleshop.com>

Offering a 20% discount to the PSLAC members

RawHide Gazette

Editor/Publisher : Roger Kaiser
Co-Founders: Bill Churchill & General Seymour
Treasurer/Secretary: Barbara Lourdes
Directors: General Seymour, Ken Erickson,
Len Madison, Roger Kaiser & Paula Marquis

The **RawHide Gazette** is published monthly (12 times a year). Address for information and correspondence:
PSLAC, c/o Barbara Lourdes, PO Box 1144, Auburn, WA.
98071, USA
E-Mail: Billing@pslac.org

PSLAC Membership:

"a" - Internet access to **RawHide Gazette** including Member only area & meeting attendance \$10/year. (1 Person)
"b" - US Postal Mail **RawHide Gazette** including new Member articles & meeting attendance \$24/year. (1 Person)
"c" - Internet access to **RawHide Gazette** including Member only area & meeting attendance \$15 per year. (Family)

All submissions are subject to editing for clarity and length.
All articles submitted must be accompanied by name, address and permission of writer

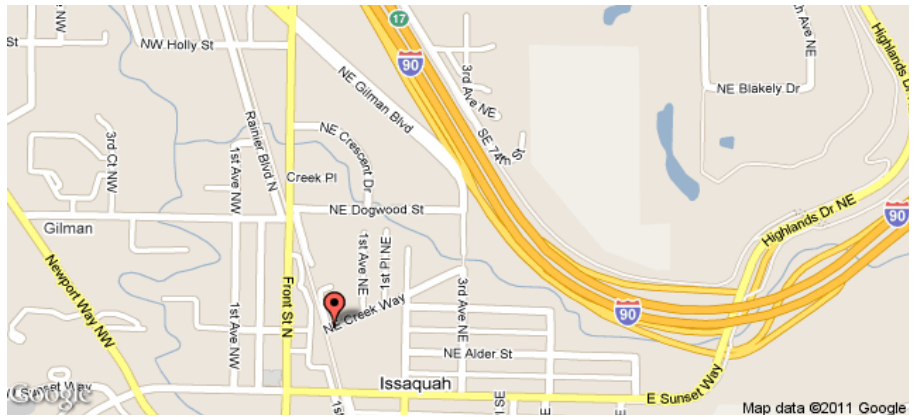
Advertising Rates

The **RawHide Gazette** offers advertising space to interested parties. Ad spaces are as follows:

1/4 Page or Business Card.....	\$60 USD
1/2 Page.....	\$110 USD
1 Full Page.....	\$200 USD

These rates cover a six month time period. PSLAC members are entitled to a 25% discount. Leather companies supporting PSLAC are given free Business Card size advertisement, additional space at regular rates.

The Puget Sound Leather Artisans Co-Op can be found at:
<http://www.pslac.org>



Taking I-90

From Auburn: North on Hwy 167 or I-5, then I-405 North, then onto I-90 Eastbound:

From Everett: South on I-5 to I-405 South, or to I-90 Eastbound:

From I-90 Eastbound: get off on exit 17/ Front St., turn right onto Front Street. At the third stoplight, turn left onto E. Sunset Way and see below:

Taking Hwy 18 from Auburn, Covington, Maple Valley to Issaquah:

Get on Hwy 18 Eastbound, about 2 1/2 miles after Maple Valley exit take the Issaquah-Hobart exit. Follow signs (left) to take Issaquah-Hobart Road to Issaquah (about 8 1/2 miles). Issaquah-Hobart Road

becomes Front Street. In Downtown Issaquah turn right onto E. Sunset Way and see below:

After Turning onto E. Sunset Way:

Go two blocks (past Police and Fire station), turn left onto 2nd Ave SE, go past the old Senior Center building and a baseball field on your left. Turn left onto NE Creekway, go about 1 block. The Issaquah Valley Senior Center is a brick building on your left, parking in front of it. There is also parking behind from E. Sunset turn left into the parking lot just before the Police station (look for a large parking sign on your left) and follow it until you see a kids playground. **Address 75 NE Creekway, Issaquah WA 98027**

PSLAC
c/o Barbara Lourdes
PO Box 1144
Auburn, WA 98071
USA

