

RawHide Gazette

"Without question, the RawHide Gazette is by far the best and most informative and comprehensive Guild publications of all of them! You are to be commended for your very fine and professional efforts. Keep up the good work. With admiration"
/signed/
Al & Ann Stohlman, December 1997

Copyright © 2013 by PSLAC, All Rights Reserved

Puget Sound Leather Artisans Co-Op

February 2013

Hide Highlights

Page

- 2.....Colt Single Action Army Revolver
- 4.....Len Madison Shares His Grandaughter's Artistry
- 5.....Pendelton Leather Show 2012
- 5.....Don Gonzales "Spider" Saddle
- 6.....Chuck Hooks
- 7.....A Tip From Dusty Wert
- 8.....Western Washington State Fair Results
- 9.....Ken's Knothole
- 10...Workshop Report
- 11...Western Washington PSLAC Schedules
- 11...Eastern Washington PSLAC Schedules
- 13...Post Turtle
- 13...Did You Know.....?
- 14...Advertisements
- 17...Map & Directions

Next Meeting on Sunday March 10th at 1:00 PM

General meeting starts at 1:00 followed by the Demo (see schedule on page 9 for details)

Meet at *The Cedar Grange Hall*
No. 534 at Maple Valley
(See last page for map & directions)

A CALL TO OUR MEMBERS

The Directors in their wisdom (or lack of it!) have been trying to find a way to make the RawHide Gazette more interesting to all our members, those both near and far.

Most of our extensive membership does not come to our meetings, mostly because they are too far away or live overseas, but, we would like to hear from those members we do not see, both near and far.

Particularly we would like to hear from those members who live too far away to come to meetings on a regular basis. Send in photos of yourselves, your workshops and photos of the items you have made and any projects you are currently working on. Some information on how you got started in leatherwork and where the interest came from, what sort of articles you enjoy making, and what sort of things you would like to be reading about in the *RawHide Gazette*.

You, as an individual, may think that information is not very interesting or exciting, and it may not be to yourselves, but, to other people it is interesting and in many cases it can be inspiring to them as well. It can motivate them into extending themselves to try new ideas.

Something for all the members of PSLAC to remember is that whether you are

far away or overseas and therefore not able to attend meetings, you are still part of the Group and your input is welcome and, as a member, expected.

So, lets hear from you and let us know where you are, no matter how far away. Paula Marquis

Editors note - if a small item is something you wish to send in see our new feature Did You Know.....? on page 10.

Colt Single Action Army Revolver



A pair of Colts

Continuing our series of articles on guns and leather, there is no firearm in our history that welds these two together as well as the Colt Model P, Model 1873, the Single Action Army, commonly called the Peacemaker, Equalizer, Six shooter, and Hog leg. Though there were several makes of handguns in common usage, none has captured the following that this one has. It is one of the most copied and collected firearms ever made.

Near the end of the Civil War, cartridges were being developed, and existing cap and ball revolvers were being converted to being able to utilize cartridges. A few years after the war's end, the Army put out bids for the cartridge revolvers. As the mechanisms of the Colt cap and ball revolvers, which had been in constant development since 1835, had proven reliable, these were kept, along with the grip from the Navy. A top strap was added to make a solid frame and the new revolver, with a 7 1/2 inch barrel, in .45 caliber was introduced. After passing the



New Frontier. Mechanically the same as the SAA. Adjustable sights added to this model.

qualification tests in 1873 a small initial order was placed for approximately 3000 of the new revolvers. Thus began this revolver's legacy.

Over its lifetime, the SAA has been produced in 30 calibers. In addition to the .45 caliber, with the opening of the West and the popularity of the Winchester Model 1873, 3 of the most popular calibers produced were the 32-20, 38-40, and 44-40. For those who are not familiar with cartridge language, the first number (32) is the diameter of the bullet in 100ths of an inch, and the second number is the grains of black powder that was loaded in the case (20). This allowed the same cartridge to be used in both the Winchester and the Colt.

The three common barrel lengths, the 7 1/2, 5 1/2, and 4 3/4 were referred to as the Army, Artillery, and Civilian models. Many other modifications were made on order. Barrel lengths ranged from 2 to 16 1/2 inches. Though commonly referred to as a "six shooter", for safety reasons only 5 chambers were loaded. This was because of the shape of the hammer. On the front is a spur which hits the primer in the cartridge and detonates it. With the hammer down, resting on the primer, it only takes a slight tap to detonate the primer. A very dangerous condition. The safety latch on the hammer and the trigger are the weak points of this design and are easily broken.

Therefore, that sixth chamber

was left empty, with the hammer resting over that chamber. Though Colt has maintained that firing system, other manufacturers have changed it to allow carrying all 6 chambers loaded. This modification will be discussed in a later article.

In recent years 2 models with adjustable rear sights have been manufactured. These being the Scout in .22 caliber, and the New Frontier in center the center fire calibers. The current website Colt shows the Colt Single Action Army in .357 and .45 calibers and the New Frontier in .44 Special and .45 calibers.

Now for the leather. A holdover from the black powder age was the



SAA. Colt Single Action Army, Model P, Model 1873. Known by all three names. This one has case hardened frame and stag grips.

pommel holster or pommel bag. This hung over the front (pommel) of the saddle or the saddle horn, if the saddle had one. Along with the pistol, powder, balls, lubricant and the necessary tools for loading and carrying for the cap and ball revolver were carried in this pouch. Many times extra loaded cylinders were carried to facilitate rapid reloading. These pommel bags started many years before when the handguns were single shot flintlocks and/or caplocks and very heavy.

The Army, mainly the cavalry, was the first recipient of the new revolver. It was worn on a belt which was waist high, on the right side in a holster with a flap over the top completely covering the holster. The butt



The holster in this picture is a Buscadero, competition rig from the early 1970's. It is made of rough out leather and the holster is metal lined. This pistol is the first SAA I purchased nearly 50 years ago. I have the trigger guard and back strap silver plated and made the grips from a piece of figured walnut.

was facing forward. It was in this position as the sword was carried on the left side, and the butt forward to keep the butt from interfering with other equipment.

For civilian wear, after about a 40 year evolution, the belt holster had been developed to the stage that mostly they were generic in size, you got one that the gun would fit in, and it would wear to shape. Some had the flap for protection. If they didn't have the flap, the holster body usually came up to well over the top of the pistol to protect it. The handgun was a working tool, as was the rifle.

Some time in the 1850's a more form fitting holster called the California Slim or Slim Jim was developed. This was made to fit the pistol, was made in both flap and open top versions, and is the first known to be embellished with carvings.

The flap version was preferred in the East and the open top in the west.

With the development of the cartridge pistol, a readily accessible resupply of ammunition was necessary and the cartridge belt was developed. These were from 2 to 5 inches wide, with loops to hold the cartridges sewn onto them. The Mexican Loop holster was developed to fit these belts. These were made of one piece of leather. One half was turned over to make a pocket for the pistol to fit in and the other had horizontal cuts made across the center, long enough to fit the pocket. The flap was folded over and the pocket stuffed through the cuts, leaving narrow straps across the pocket. This made a belt loop that would easily fit over the cartridge belt.

These belts and holsters were worn both at waist level and slightly lower. Holsters were worn both for straight draw, butt forward draw, or cross draw. The butt forward style was preferred by many ex-military men and working cowboys as in this position the butt of the pistol was less likely to interfere with the other equipment and their work. The decorative carving continued on these holsters and started being embellished by having brass or nickel spots, conchos, or coins attached.

In the 1920's the Buscadero rigs started to appear. These were wide belts with a dropped section on the sides where a horizontal loop was cut. The holster back was passed through the loop and the pocket passed back through the loops on the back. This placed the butt of the pistol

near the heel of the hand. Enter the cowboy/western era of films.

The 1950's and 1960's was the high point in western and fast draw shooting. Holsters were dropped lower and metal lined. Draw angles varied. Pistols modified. Big hats and boots. Vests and bandanas. SASS (Single Action Shooting Society) and other organizations formed. Other competitions have been developed which include not only pistol shooting, but rifle, shotgun, mounted on horseback, riding in stage coaches, etc.

The SAA is the only revolver still in production by Colt. 140 years and still going. Long live the Rampant Stallion. Norm Lynds



This is a photo of a cocked hammer showing the spike which detonates the primer, described in the text.

Len Madison Shares His Granddaughter's Artistry

Len Madison was proud to show his Granddaughter Carly's prize winning segmented belt at last month's PSLAC meeting at the Cedar Grange. This was a design originally brought to the group by Sister Rachel last year. Len has been teaching leather working to his grandchildren and Carly saw this belt and decided to make one to enter in the Western Washington State Fair at Puyallup last September. She won Grand Champion! Congratulations Carly! What follows are some pictures of materials used. Len says he has plenty of the leather ovals used for the belt links if anyone is interested!



Carly and Len at PSLAC meeting. Look at those ribbons!



General presenting Carly her award from PSLAC.



Len holding Carly's belt.



Detail showing one end of the belt.



One of the oval "links".



The belt and some of the materials used to make it..

Pendleton Leather Show 2012

The Pendleton Leather Show was held November 8th and 9th. Vandy and Luke of Sheridan Leather did a great job with their first year of producing the show! I'm already looking forward to the 2013 show October 25th and 26th. Check the website www.pendletonleathershow.com for more information.

experience. There were a number of great classes available. Debbie and I attended the Chan Geer Basics of Basket Stamping class and the Sewing Machine Troubleshooting class by the Leather Machine Co. Both were excellent classes and we thoroughly enjoyed them.

Roger Kaiser



Herb Rocky, John Guo & Ken Bush in the Chan Geer Basket Weave class . Pound that leather boys!

For those of you who haven't attended this show it is best described as a friendly, homey, relaxing



Vendor hall at the Pendleton Leather Show.



Norm Lynds and John Wickstrom in their booth at the trade show. See those smiles? They more than paid for the trip!

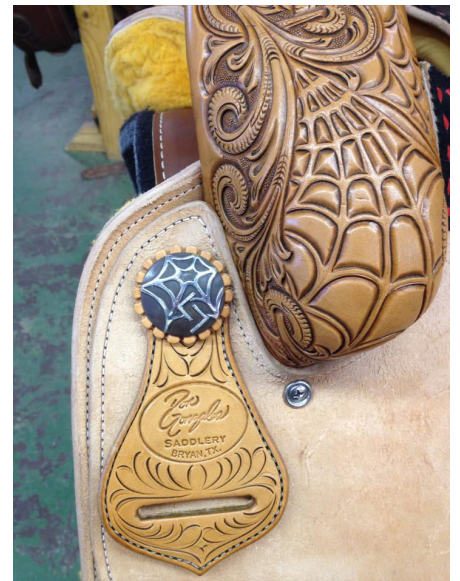


A sample of the work done at Chan Geer's Sheridan Flowers workshop.

Don Gonzales "Spider" Saddle



Dusty found this beautiful saddle on facebook. Peter Main had posted it. It is from Don Gonzales Saddlerly in Bryan, Texas.

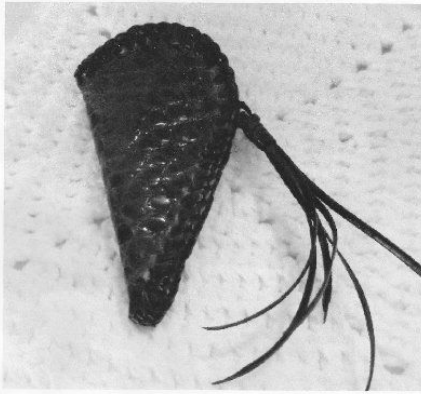


Chuck Hooks Does Some Fine Work!

Found some great work by Chuck Hooks on the web. Check out his website at <http://www.chuckhooks.com/>. You'll find more holsters and a lot more!



A trick that will curl your lace!



(1)

(1) The uncurled lace



(2)

(2) Soaking the lace

(3) Make sure the lace is flat, twist it onto a toothpick as shown, and clamp it with a clothes pin. Leave the clothes pin on until the lace is dry.



(3)

(4) After the lace is dry take the clothes pin off, pull out the tooth pick and the lace is nicely curled!



(4)

Western Washington State Fair (Puyallup) Results

Leather Craft

<u>Entry</u>	<u>Name</u>	<u>Description</u>	<u>Place</u>
9475	Brenda Adams	1910 - Untooled Items-Adults	Honorable Mention
9476	Brenda Adams	1915 - Braiding-Adults	Honorable Mention
5387	Carly Epp	1820 - Belts-Juniors	First - Grand Champion
8175	Zak Evans	1815 - Wallets-Juniors	First - Reserve Champion
9186	Owen Hill	1815 - Wallets-Juniors	Third
9182	Evan Hill	1815 - Wallets-Juniors	Second
7078	Douglas Hyatt	1920 - Other Leathercraft-Adults	Third - Craftsmanship
9912 9070	Barbara Lourdes	1870 - Tooled Pocket Items-Adults	Honorable Mention
9911 9069	Barbara Lourdes	1850 - Picture-Adults	Second
8425	JohnGuo Lyman	1860 - Tooled Carrying Cases-Adults	Second
9707 9053	Norm Lynds	1860 - Tooled Carrying Cases-Adults	First
9705 9052	Norm Lynds	1885 - Belts-Adults	First
5782	Kathleen Nace	1875 - Albums Scrapbooks-Adult	First - Grand Champion
9708	Brianna Soulier	1805 - Household Items-Juniors	First
9730 9067	Bob Stubbs	1920 - Other Leathercraft-Adults	First
9728 9066	Bob Stubbs	1850 - Picture-Adults	First - Reserve Champion
8816	Rose Wintehalder	1920 - Other Leathercraft-Adults	Second

Leather Craft - Teachers and Professional

<u>Entry</u>	<u>Name</u>	<u>Description</u>	<u>Place</u>
9131	Frederica Davis	1946 - Household Items	Third
9128	Frederica Davis	1966 - Other Leathercraft	First
9130	Frederica Davis	1932 - Tooled Sportsman Carriers	Second
9127	Frederica Davis	1964 - Leather With Other Medium	Third
9129	Frederica Davis	1958 - Native American Style Items	First
5383	Len Madison	1938 - Tooled Pocket Items	First
6019	Paula Marquis	1932 - Tooled Sportsman Carriers	First
6020	Paula Marquis	1962 - Small Tooled Articles	First
8886	Paula Marquis	1964 - Leather With Other Medium	First
5382	George Senn	1964 - Leather With Other Medium	Second - Award of Merit
7370	General Seymour	1930 - Pictures	First - Honorable Mention
8144	Glenn Woessner	1936 - Tooled Handbags	First
8145	Glenn Woessner	1960 - Large Tooled Articles	First
8143	Glenn Woessner	1930 - Pictures	Second

Congratulations to all who
It is wonderful to see the
let's do even more this



entered their leatherwork!
cabinets full at the fair so
year!

Well, hopefully, everyone has the word by now that we've had to move our monthly meeting location from the Issaquah Senior Ctr., to Maple Valley, to a Grange Hall that Roger and Debbie Kaiser belong to. We've had a couple of meetings there so far and it looks like this is going to work out well for us; it seemed to work pretty well for the meetings and for the Sunday demos after the meetings. And possibly for Saturday workshops. We talked about getting those started up again at our December meeting. Paula sent around a suggestion sheet for people to circle for ideas for workshops. Let's all plan on thinking of some ideas of things that we'd like to work on or learn more about and bring them to future meetings. We haven't had these for quite a while, hopefully we can come up with some projects that folks would like to work on and we can get some good participation.

In past years we've done projects such as making lastless shoes, bookbinding, making folders, learning different hand sewing techniques, making a holster and various figure carving, and dying and coloring techniques. There was some discussion about doing another carving and coloring with acrylic paints this spring, like we did a few years ago with Jackie. Len has a winter scene with polar bears and Northern lights, that we'll take a look at in upcoming meetings. We'll have more information on this in the Workshop Reports. We also talked about changing things for the months we've normally taken off in the summer, July and August. We talked about continuing to have meetings through those months, rather than losing momentum. We could still use the demo time at those meetings for those two months to work on UFO (Unfinished Fair Objects) projects for the Puyallup fair.

February Meeting

Reminder: remember that we have our annual visit to McPherson's Leather Company in Seattle for our February meeting, Sunday, February 10th. We'll start at 1 PM and we usually go to about 3:30 PM. It's a chance to go back into the back areas of McPherson's, where you normally can't go to unless you have a business, and to hear about updates on the leather business from the folks at McPherson's. I almost always find some things there that I just can't live without, leather, glues, dyes, etc. We'll be back to the Maple Valley Grange Hall for our meeting in March. I'll have to miss the March meeting; I will again be manning a couple of tables at the annual Cascade Mountain Men Muzzle Loading Arms and Pioneer Craft Show, which is at the Evergreen State Fairgrounds in Monroe Washington, on March 9 and 10th, from 9 AM to 5 PM on Saturday and 9 AM to 3 PM on Sunday. It's \$5 admission. If you haven't been to this show before, it can be a great place to get ideas for projects, beads, leather. Andy and Pat will be there from Tandy. All of the vendors dress-up in period costumes from the 1700's colonial period through the 1800's fur trade era and many of the local black powder gun club members come dressed up and make a day of it.

First I'll report on the meeting workshops as we have a few interesting ones scheduled. The February (this month) meeting is at MacPhersons in Seattle. The doors will open at 1pm. There will be no Director's meeting, but, the members will be updated on what is happening. Then Lori will give a short talk on what is happening in the leather industry in general. After that everybody will be free to have a good look around the shop and be able to make the most of purchasing supplies for the coming year. We are always given a handsome discount on what we buy at the meeting.

At the **March** meeting we will have a workshop with George Senn on making a knife sheath that opens your folded knife as you pull it out and folds it up again as you put it back into the sheath. It will be a fun project with George and he has suggested we bring the following leather and materials and tools. George said he would bring the nylon nuts that will be required.

- 1 sq ft of leather, 8 to 9oz weight tooling leather.

- 2 chicago screws - 1 x 3/8" and 1 x 1/4"

- Sewing thread, awl, pricking iron, stitching horse, needles, pliers and anything else you can think of.

- Hole punch large enough for the chicago screws.

- Tools for a simple border pattern, mallet, stone, sponge, water dish, etc.

- And, of course, edging materials to give a nice finish.

For the **April** meeting John Wickstrom has provided a nice project to practice our molding over a wooden form by making a leather weight. John is making the wooden molding jig which we will purchase from him. We will need to bring leather and again a square foot of leather should be sufficient. Choice of leather weight mostly will be up to the individual depending on how soft or solid you want your weight to look and feel. So anywhere from 6to7oz up to 9to10oz. While we are waiting for the leather to dry we can do some tooling on the top.

At the **May** meeting

we will assemble and sew the leather weight. Leather for the bottom will be needed and sewing supplies and edging and finishing materials.

June, of course, there will be no workshop as it is our Picnic and social day. We are planning to have an all day workshop on the Saturday. More on that later.

The Directors have decided this year to just have our normal meetings during **July** and **August** and not to have a summer break as people take their annual vacation at all times of the year and most of the members will be around. Usually during July and August those members who do get together work on their Puyallup Fair projects normally referred to as UFO'S (Unfinished Fair Objects).

September meeting as normal and at present no workshop has been scheduled. Some of the members will be absent as they are going to Spokane for the Peter Main workshop.

October/November at the present have not a workshop scheduled, but, the directors will be organizing workshops from the suggestions that were handed in at the January meeting.

December we will probably have a small workshop, but, it will mostly be social and Christmas gift exchange. Now with plenty of warning there will not be an excuse for everybody to not make something and join in the fun.

I mentioned earlier that we are looking at a workshop for the day before the Picnic, that will be an all-day workshop and we are looking at getting Jackie Holliday over from Spokane for a day of painting. The subject will be an Artic scene with Polar bears in a night time sky with an Aurora Borealis. Jackie and Paula will be working in collaboration on this project. For Jackie's side of the workshop to be viable she will need to be paid \$500 for the day to cover expenses of petrol, car, motel, food, etc., and her own loss of production for three days (travelling to

and from Seattle and the day of the workshop). So, regardless of how many people sign up, the cost will need to be shared by those who attend. That means, if 10 people sign up it will cost us each only \$50 for the day, if only 5 people sign up it will cost us \$100 each, etc.

Paula is going to draw up the tooling pattern and it will probably be a two day workshop. Paula said she would run the two day tooling workshop for free for all the people who sign up and pay for Jackie's workshop. That will work out to be a very economical workshop, three days for the price of one day!! Jackie always does a great job on her painting classes and makes them very interesting. Paula said her and Jackie have already been getting their heads together to make this an extra good workshop. The two day tooling workshop will be in May, actual dates still to be set. I will collect names in March, and in April we will know how many are coming and let you know the individual cost for the workshop in June, to be fully paid before the tooling workshop.

See you all at the meeting.

Len Madison, Workshop Co-Ordinator.

Western Washington (Seattle/Tacoma/Everett) PSLAC CURRENT SCHEDULE FOR 2013

General Member's meetings are on the 2nd Sunday of each Month unless specified below. 1:00 PM to 4:00 PM approx.

• Meetings held at Cedar Grange Hall No. 534 at Maple Valley General meetings start at 1:00 PM followed by the mini-demos

Breakfast informal get-together locations:

North Breakfast >>> Last Friday of the month at 10:00 AM. Lake Forest Park Town Centre. 17917 Bothell Everett Hwy, Bothell, WA 98012 Bothell Way N, bordered by 170th N. & Ballinger Way N. Meet in the Third Place Books eating area

South Breakfast >>> 3rd Saturday of the month at 8:30 AM. Homestead. 7837 S Tacoma Way, Tacoma, WA 98409 (253) 476-9000

All Day-Workshop Schedule for 2013:

Dates: TBD (watch this space)

Time: TBD (watch this space)

Location: TBD (watch this space)

Yearly General Meeting Schedule for 2013: Cedar Grange Hall No. 534 at Maple Valley

March 10 1:00—4:00 PM Cedar Grange General meeting followed by the *Mini-Workshop*—George Senn will do a workshop on a folding knife sheath that will open the knife as it is pulled out. Tools and materials are listed above on pg. 7:

April 14 1:00—4:00 PM Cedar Grange General meeting followed by the *Mini-Workshop*—John Wickstrom will do a workshop on making a leather weight.

May 5 1:00—4:00 PM (*Note date change to 1st Sunday*) Cedar Grange General meeting followed by the *Mini-Workshop*—Sew and assemble the leather weight.

June 9 1:00—4:00 PM Cedar Grange General meeting followed by the club picnic.

July 14 1:00—4:00 PM Cedar Grange General meeting.

August 11 1:00—4:00 PM Cedar Grange General meeting.

September 8 1:00—4:00 PM Cedar Grange General meeting. There will be a Peter Main workshop in Spokane contact Ken Bush for details.

Eastern Washington (Tri-Cities) Desert LeatherCraft Group (DLG) PSLAC CURRENT SCHEDULE FOR 2013

Tri-Cities Desert LeatherCraft Group Member's meetings are on the 3rd Saturday of each month unless specified below:

• Informal meetings held at Spokane Tandy Leather Factory Store, 1702 North Monroe Street, Spokane, WA 99205 (Call (509) 328-9939 for directions).

Eastern Washington (Spokane) PSLAC East PSLAC CURRENT SCHEDULE FOR 2013

PSLAC East Member's meetings are on the 1st Saturday of each Month unless specified below. 9:30 AM to 12:30 PM approx.

• Informal meetings held at Spokane Tandy Leather Factory Store, 1702 North Monroe Street, Spokane, WA 99205 Contact Ken Bush for time, date (normally the 1st Saturday) & details.

Ken Bush

White Rose Leather 11923 E. Fairview Ave.

Spokane Valley, WA 99206

whiterosex@aol.com (509) 926-2087

Continued on next page

We are members of PSLAC-East (Puget Sound Leather Artisans Co-op). The East is because we are East of the Cascade Mountains. We offer classes in leathercraft at the Spokane Tandy Leather Factory store. These classes are free and open to the public. An informational newsletter is sent out prior to each class with a short description of the class, whom the instructor will be and what tools will be needed. We also schedule ad-hoc classes which are announced in the newsletter. To be on our mailing list for class notifications, please send an email (including your full name) to whiterosex@aol.com requesting to be on the PSLAC-East mailing list.

All Day-Workshop Schedule for 2013:

Beginning Carving Class 01

This class will cover three Saturdays and consist of making a checkbook cover from scratch with a floral carving. The class will be offered as either a morning session or an afternoon session. You choose which session you want to be in at signup time. You must sign up in advance at the Spokane Tandy store on 1702 North Monroe. Cost is \$20.00 per person and includes all materials needed for the class. Loaner tools will not be available for this class. If you don't have the necessary tools for the class, Tandy will be offering special discounts on tools for those taking the class. The discount will be one level lower than your current price level. Ex: If you normally pay retail, your tools for this class will be priced at the wholesale level. If you pay at the wholesale level then you will get business prices. Etc. For more information, call Tandy at 509-328-9939.

Course will cover the following:

- Sharpening and use of the swivel knife
- Use of stamping tools and other tools used in construction
- Preparing leather for carving/stamping
- Project construction and tools needed
- Sewing
- Applying finish to the checkbook and edging

Tools you will need for carving (Basic Seven)

- Swivel knife
- Beveler
- Pear Shader
- Camouflage
- Veiner
- Seeder

BackgrounderTools for carving enhancements (optional)

- Mules Foot
- Flower Stop
- Wiggler
- Matting Tools
- Modeling Spoon

Tools needed for layout and assembly

- Ruler or small square
- Red pen or #2 pencil
- Favorite cutting device for paper and leather
- Stitching punch

Optional

- Edger
- Rubbing stick or cloth
- Slicker
- Leather strop

Woody and I will be presenting the PSLAC-East 1st Saturday class at the Spokane Tandy Store (1700 North Monroe) on Feb 2 starting at 10:00 AM. It will be a class on basket stamping and is free and open to everyone.

Tools needed for the class: Swivel knife, Beveler, regular Basket stamp such as 6501 (no slanted or curved stamps please), Border tool (which is optional)

Don Monroe will be teaching how to tool a rose with leaves for the PSLAC-East 1st Saturday class in March.

In March we will also be presenting a fee paid class on tooling a complete checkbook cover from scratch start to finish. Attached is the current info on the class.

Continued on next page

Finally, I need your feedback on our Master Craftsmen summer classes. Please let me know your preferences. Here are the tentative classes all subject to scheduling. If you have your own suggestions please let me know asap.

Chan Geer

He is already committed for June so we would have to get him here sometime in early July.

His classes are usually a 1 day class followed by a 3 day class and could be either making picture frames or making a expandable closure notebook. Some have suggested a repeat of the filigreed magnetic closure notebook class since they missed the first go round.

Bob Beard

At the moment, Bob is available mid July to early August but things are changing fast for him

His class would be either a 2 day class on making fancy belt buckles or a 1 day class on a simpler belt buckle followed by a 1 day class on making feather style earrings.

Peter Main

We hope to get Peter scheduled for the first full weekend in September (8th and 9th)

Peter has indicated he wants to do some type of leather jewelry such as a necklace. He has an idea for the actual project but has some more work to do on it before announcing it.

Again, please let me know asap of your preferences. Thanks

Ken Bush

POST TURTLE

I imagine this will have a certain meaning to just about everyone.
(There is a lot of truth here. Think about it.)

While suturing a cut on the hand of a 75 year old rancher, whose hand was caught in the squeeze gate while working cattle, the doctor struck up a conversation with the old man.

Eventually, the topic got around to the Government leaders.

The old rancher said, 'Well, ya know, most are like a 'Post Turtle'.

Not being familiar with the term, the doctor asked him, what a 'post turtle' was.

The old rancher said, 'When you're driving down a country road and you come across a fence post with a turtle balanced on top, that's a 'post turtle'.

The old rancher saw the puzzled look on the doctor's face so he continued to explain. "You know he didn't get up there by himself, he doesn't belong up there, he doesn't know what to do while he's up there, he's elevated beyond his ability to function, and you just wonder what kind of fool put him up there to begin with."

Best explanation I've heard yet.



A Word to Our Readers

In this issue we've added a new feature that we would like to have you help us with. It's called "Did You Know ...?". What we'd like are short items on tricks you have discovered while working with leather which might be helpful to your fellow artisans. It could be a type of material or a technique or some other item that you have found useful in your leatherwork and you would be willing to share with others. So if you don't have an article (which we would also gladly accept!) but you may have a tip or trick that you have found works please drop us a line at dblyman@yahoo.com. Please include your name and email address so we can let others know who you are. Thank you. David Lyman, Editor

Did You Know.....?

Please help fill this space with handy tips for your fellow leather artists!!

PSLAC Members Only Advertisements

Any PSLAC Member can advertise leather related products or services subject to approval. Just send your text, pictures and/or logo to webmaster@pslac.org

Sea Leather Wear Genuine Fish Leather Skins



For the custom manufacturing of shoes, handbags, and all sorts of apparel and accessories

Offering a 10% discount to the PSLAC members



<http://www.sealeatherwear.com>

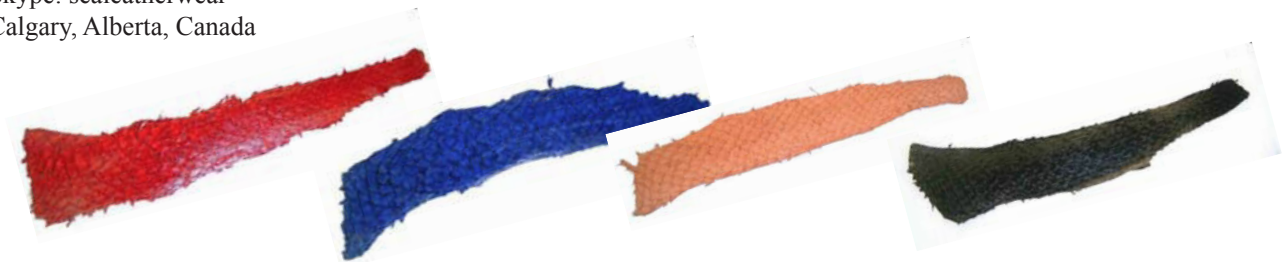
Stanley Major

Customerservice@sealeatherwear.com

Skype: sealeatherwear

Calgary, Alberta, Canada

403-689-4701



Leather Accents Custom Stitching Horses & Clams

John Wickstrom—Maker

Beautiful handcrafted wood Call
for information 360-456-1688



Leather Big Book¹ Covers www.leatherbigbookcovers.com by Bob Stelmack, Desert Leathercraft LLC

*Let your imagination run wild
and have a **Custom Leather Big Book¹ Cover** made for you. The
covers will be "one-of-kind"
and are quite striking.*

¹The Big Book is a registered trademark
of Alcoholics Anonymous World
Services, Inc



www.leatherbigbookcovers.com

PSLAC Members Only Advertisement Page

Any PSLAC Member can advertise leather related products or services, subject to approval. Just send your text, picture and/or logo to webmaster@pslac.org

MARQUIS UNIQUE LEATHER ARTISTRY, LLC



I make almost anything that can be made from leather and can be sewn by hand. A lot of my works are 'bespoke items', meaning, one off, individual custom requests, ranging anywhere from books and folders to rifle scabbards, holsters and golf bags, fully carved and stamped, and any and all articles in between, which also includes moulded bowls and pictures.

Phone: (206)-523-6295
E-mail: marquispg@aol.com

www.marquisuniqueleather.com



Black Horse Leatherworks & Saddlery specializes in high quality & unique custom western tack and apparel. We make some English items such as Schooling chaps & Stall items. We make all our leather items one at a time, by hand per our clients specifications.

C.E. Gessell, Owner

Our Motto: If you can imagine it... we can create it!

Fantastic Leather Burnisher

- ▶ New and Improved
- ▶ Faster than ever
- ▶ Cuts burnishing time by 90%
- ▶ Improves quality and appearance
- ▶ Consistent finish in a single pass
- ▶ New products available



For more information
call 509-200-9353

View our eBay Store:

<http://stores.ebay.com/scentofleather>

Visa & Mastercard orders accepted by phone

New Edge Finishing System Available

DIAMOND P LEATHER SHOP PHIL O'NEILL

Saddlery: New, Used-Repair
Custom Made Leather Goods
25051 - 180 Ave SE, Kent WA 98042
Hours By Appointment Or By Chance
(253) 631-9770

This Is A One-Man Outfit
All Custom & Repairs Are Crafted By Myself
E-mail: wsubarbara@gmail.com

Custom Maker Stamps Grey Ghost Graphics

By Jeff Mosby

Custom maker stamps, laser cut acrylic templates
and custom tapoffs for the leather craft field.
Custom cut from your artwork at reasonable rates!

P.O. Box 30268, Myrtle Beach, SC 29588
(866) 205-9810 or (843) 903-4788

www.greyghostgraphics.com



Norm Lynds, Toolmaker

Mallets, Modelers, embossing tools, lifters and
others on request

Phone: (425) 357-1001

E-mail: sagerat2003@yahoo.com

Leather Company Advertisement Page

Support our sponsors and take advantage of the PSLAC Membership Discounts...

Tandy Leather Factory

The Leather Factory #21 PORTLAND
Toll Free: 888-277-3360
13221 NE Whitaker Way Portland, OR 97230

Tandy Leather #126 SEATTLE
Toll Free: 866-220-9698
14713 Aurora Ave N Seattle, WA 98133

The Leather Factory #09 SPOKANE
Toll Free: 800-822-8437
28 W Boone Ave Spokane, WA 99201

Tandy Leather #124 TACOMA
Toll Free: 888-222-0510
13819-C Pacific Ave South Tacoma, WA 98444

Outside Washington (206) 328-0855
1-800-343-9949 Fax: 328-0859

MACPHERSON

Leather Company

Leather, Shoe Finding and Saddlery

Offering a 30-40% off retail discount to the PSLAC members

519 - 12th Avenue S.
Seattle, Washington 98144

www.macphersonleather.com



Toll Free:
(800) 541-3264
Bee Natural
Leathercare

The ultimate inleather care products

P.O. Box 820803, Vancouver, WA, 98682-0018
(360) 891-7178 , FAX: (360) 891-7166

E-mail: bnatura@pacifier.com

BRETTUNS VILLAGE LEATHER

Selling odd lots, miscellaneous overstocks, bargain leathers and leathercraft

accessories, all from Maine, only online

Sides, Full Hides, Buckles, Key Rings, Laces, Thread, Tools, Rivets, Scrap Pieces, Elk & Buffalo Scrap

Always Free Shipping in the 48 States

www.brettunsvillage.com

GLOBAL LEATHERS



Web site: www.globalleathers.com

Telephone : 212-244-5190

Fax : 212-594-7515

E-mail: globalleathers@usa.net

Paul Crystal

Offering a discount to the PSLAC members

Leather, Suede, Skins, Inc.

261 West 35th Street

11th Floor, New York, NY 10001

Tel: (212) 967-6616

Fax: (212) 564-5759

www.leathersuedeskins.com

Email: leather.suede.skins@att.net



Offering a 10% discount to the PSLAC members

Steve Derricott



Twister D Products

301 E. Bower St.

Meridian, Idaho 83742

(208) 884-3766 - Fax (208) 884-3767

A Division of Gfeller Casemakers, Inc.

www.lacemaster.com

Offering a 10% discount to the PSLAC members



Dusty Johnson

PLEASANT VALLEY SADDLE SHOP

1220 S. County Rd. 21

Loveland, CO 80537

Phone: (970) 669-1588

Fax: (970) 669-1589

E-Mail: dusty@pvsaddleshop.com

URL: <http://www.pvsaddleshop.com>

Offering a 10% discount to the PSLAC members

RawHide Gazette

Editor/Publisher : David Lyman

Co-Founders: Bill Churchill & General Seymour

Treasurer/Secretary: Barbara Lourdes

Directors: General Seymour, Ken Erickson, Len Madison, Roger Kaiser & Paula Marquis

The **RawHide Gazette** is published monthly (12 times a year).

Address for information and correspondence:

PSLAC, c/o Barbara Lourdes, PO Box 1144, Auburn, WA. 98071, USA

E-Mail: Billing@pslac.org

PSLAC Membership:

"a" - Internet access to **RawHide Gazette** including Memberonly area & meeting attendance \$10/year. (1 Person)

"b" - US Postal Mail **RawHide Gazette** including new Member articles & meeting attendance \$24/year. (1 Person)

"c" - Internet access to **RawHide Gazette** including Memberonly area & meeting attendance \$15 per year. (Family)

All submissions are subject to editing for clarity and length.

All articles submitted must be accompanied by name, address and permission of writer

Advertising Rates

The **RawHide Gazette** offers advertising space to interested parties. Ad spaces are as follows:

1/4 Page or Business Card.....\$60 USD

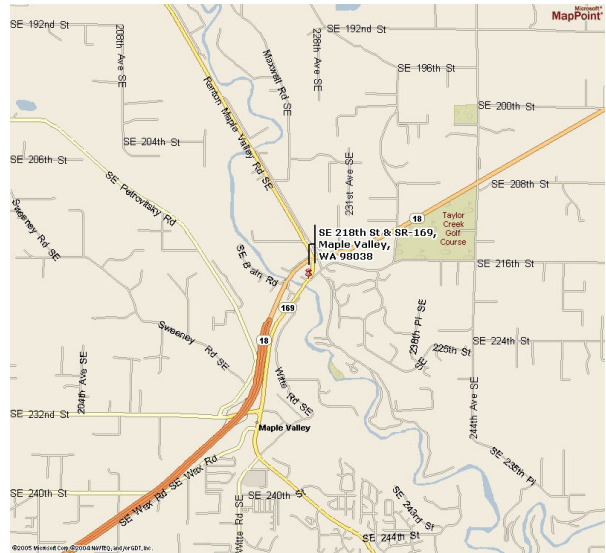
1/2 Page.....\$110 USD

1 Full Page.....\$200 USD

These rates cover a six month time period. PSLAC members are entitled to a 25% discount. Leather companies supporting PSLAC are given free Business Card size advertisement, additional space at regular rates.

The Puget Sound Leather Artisans Co-Op can be found at:

<http://www.pslac.org>



Directions to Cedar Grange #534:

From I-405 take the SR169 exit and proceed toward Maple Valley on the Maple Valley Highway. In about 10 Miles you will reach the SE 216th/SE 218th Street intersection. Turn Right onto SE 218th (the down-sloping hill on the left next to the Maple Valley Market parking lot) towards the big white/gray building next to the bridge (the Cedar Grange). The parking lot is on the first left.

From Highway 18 take the SE 231st, Junction 169, Maple Valley exit. Proceed to the Highway 169 (Maple Valley Highway) junction. Turn North (toward Renton) on Highway 169 and go about ¾ mile until you reach the SE 216th/SE 218th Street intersection. Turn left onto SE 218th (the down-sloping hill on the left next to the Maple Valley Market parking lot) towards the big white/gray building next to the bridge (the Cedar Grange). The parking lot is on the first left.

From Issaquah take Front Street toward Hobart and Highway 18. In about 10 miles get on Highway 18 West heading toward Maple Valley and Auburn. Follow the Highway 18 instructions.

PSLAC
c/o Barbara Lourdes
PO Box 1144
Auburn, WA 98071
USA