

Raw Hide Gazette

"Without question, the Raw Hide Gazette is by far the best and most informative and comprehensive Guild publications of all of them! You are to be commended for your very fine and professional efforts. Keep up the good work. With admiration"
/signed/
Al & Ann Stohlman, December 1997

Copyright © 2013 by PSLAC, All Rights Reserved

Puget Sound Leather Artisans Co-Op

July 2013

Bob Beard Classes in August

Hide Highlights

Page

- 3.....Chan Geer Tri Fold Notebook Workshop
- 10...Eye Carving Workshop
- 12...Western Washington PSLAC Schedules
- 12...Eastern Washington PSLAC Schedules
- 13...Did You Know.....?
- 15...Advertisements
- 18...Map & Directions

Many thanks to the Eastern Washington PSLAC crew for arranging this wonderful opportunity to learn from one of the masters!

Bob Beard Custom Buckle and Feather Earrings Classes Dates:
Custom Buckle class:
Aug 17, 2013 (Saturday)
Feather Earrings class:
Aug 18, 2013 (Sunday)
Time: 8 AM to 5 PM Saturday and Sunday

The Custom Buckle class is a 1 day class and focuses on making custom leather buckles.

The Feather Earrings class is a 1 day class following the Custom Buckle class and focuses on creating feather style earrings suitable for resale.

Leather, colors, and finishes are included and will be supplied for the students.

All skill levels in leather craft are welcome. This project is designed for a moderately experienced beginner as well as the master crafts person.

Location: Lions Club, 16114 N. Meyer Rd, Rathdrum, Idaho.

Easy to find, just 25 miles east of Spokane, WA via Trent Avenue (Hwy 53) or take I90 to Hwy 41 exit just east of Post Falls, ID and head north for 7 miles. Hwy 41 turns into Hwy 53 at light in Rathdrum. Go past High School and Super 1 Foods on right hand side then look for bright yellow bldg just east of Pine Grove Cemetery on left hand side. About 3 city blocks from light.

Cost: Custom Buckle class: \$115.

Feather Earring class: \$115.

Tools: Bring your own stamping tools

July 2013 - ~~Hide~~Side 1

plus a swivel knife, and mallet. If you prefer, you can bring your own stone for tooling. We will have some stones (various shaped sink cutouts) available from a local source so let us know in advance if you want to use one of them. Bob will be bringing an assortment of his Pro Series tools for sale.

Facilities: The Lions Club has 6 RV sites with electrical and water hookups available for \$15 per night. Let us know in advance if you want one of these reserved for you. The Cedar Springs Bed and Breakfast (www.cedarsprings-bb.com) is located near Rathdrum. Call Ellen Larson at 888.441.9585 for accommodations and mention that you are taking the leather class.

Contact person:

Ken Bush

White Rose Leather

11923 E. Fairview Ave.

Spokane Valley, WA 99206

**Next Meeting on
Sunday August 11th
at 1:00 PM**

*Meet at The Cedar Grange Hall
No. 534 at Maple Valley
(See last page for map
& directions)*

Continued on next page

Bob Beard Classes in August



Leather Feather Class Tool List.

This pictorial class will explain, demonstrate and practice the techniques and procedures for carving feather earring suitable for resale. This will include the techniques on how to carve, emboss, color and assemble this project.

Basic equipment

Swivel knife and blade
Scalpel and handle (#11 blade)
Right and left Lined Angle
Bevelers
Fine Line Hair Blade
Razor type hair Blade
Poly board or Pouno Board (for cutting)
#4 pointed paint brush
Palette
Jeweler's pliers

Common tools

Tandy - B202R, B202L

Pro-Series tools

Bob's - ALB3

Bob will be bringing some of these tools for either sale or loan so if you don't have them, he will.

The leather, necessary finishes, and colors will be supplied for the class. Many of the tools listed can be substituted with other similar types of or sizes of tools.



Leather Desert Scene Buckle Class Tool List

This pictorial class will explain demonstrate and practice the techniques and procedures for carving a South Western scene on a custom belt buckle. This will include the techniques on how to carve, emboss, color and assemble this project.

Basic equipment

2 pair of small pliers
Swivel knife and blade
Maul or mallet

Stylus

Modeling spoon
Scalpel and handle
Paper towel to wipe brush
Sharp black ink pen
Number 4 pointed paint brush

Common tools

F-891
F-895
F-896
F-941
Small smooth pear shader
B-61 under cutter
F-900 or F901 checked matter
104 checked backgrounder
902 pointed smooth beveler

Pro-Series tools

BF-1 thru BF-4 figure bevelers
B-3 through B-4.25 Steep bevelers
L-3 lifter or U-3 under cutter
SP-1 and SP-2 smooth pointed bevelers
PS-3 or PS-4 smooth shader
GB-4 grass blade

July 2013 - ~~Hide~~Side 2

M-3 checked matter
BG-3 backgrounder
BT-2 bush tool

The leather, necessary finishes, and colors will be supplied for the class. Many of the tools listed can be substituted with other similar types of or sizes of tools.



Chan Geer Tri Fold Notebook Workshop

Chan Geer held a workshop in Rathdrum, Idaho for PSLAC members. It was a small group but the results were amazing! Thanks to Ken Bush for the pictures!



Chan beginning the class.



Cindy finally gets to keep one of my projects. She deserved it for all of her help behind the scenes. Red lizard was her choice for the inlay.



Steve, John Guo and Robb during one of our many breaks.



Robb Gray waiting for class to start. He brought some of his knives for sale. They are very well done, look gorgeous and are scary sharp.



The pattern is traced and cut. Next we begin tooling.



John Guo also waiting.

Continued on next page

Chan Geer Tri Fold Notebook Workshop



Steve getting personal instruction from Chan.



More personal instruction.



Total concentration here.



Jacky and Woody being busy.



Chan showing us how to cut out for the inlays. Notice the two tone bench knife just at the end of the leather. It's one of Robb's knives that Chan helped design.

Continued on next page

Chan Geer Tri Fold Notebook Workshop



John Guo busy cutting out spot for his inlay.



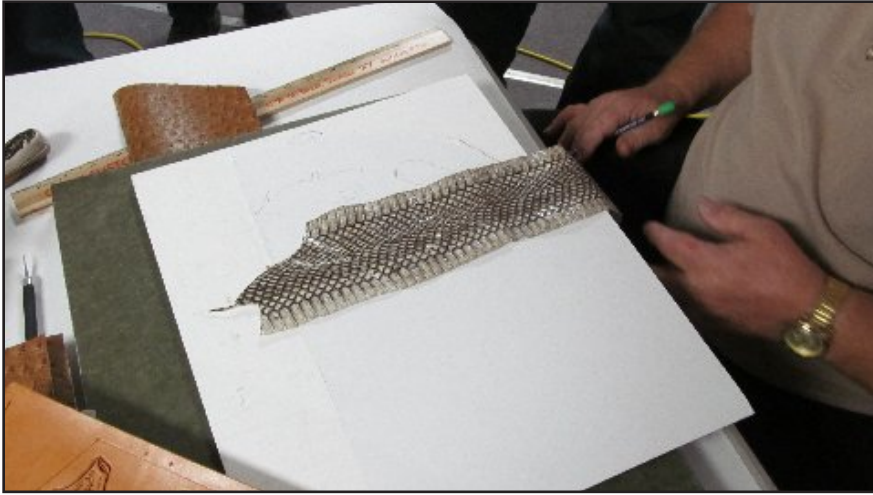
Steve doing same.



Chan showing us how to prepare the inlays.

Continued on next page

Chan Geer Tri Fold Notebook Workshop



Snakeskin to be used for inlays.



Lining up the snakeskin to see which part looks best. The inlays won't be glued in until after we antique the notebook.



Chan demonstrating how to apply the antiquing.

Continued on next page

Chan Geer Tri Fold Notebook Workshop

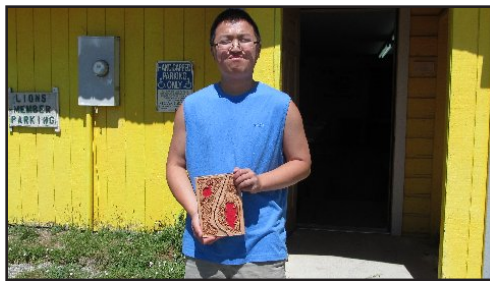


Ken's notebook after antiquing and ready for inlays.



Red lizard skin that Cindy chose has been added as the inlay.

Chan Geer Tri Fold Notebook Workshop



John Gou and his finished notebook.
He also used red lizard skin for his inlay.



Ken's finished notebook.



Steve and his finished notebook.
Everyone else managed to get away before I could get their pictures.



Chan, Steve and Woody after helping me clean up the Lions club after class and then loading Chan's truck.



Ken, Chan and Woody relaxing after a long day!



Chan and I with our feet up relaxing after class. We used the fishing pole behind Chan to catch squirrels. Trick is to tie peanuts to the end of the line (sans hooks), put the peanuts in the crotch of the tree and wait for the squirrels to come get them. Play them just like fish. By the way Akiko, Chan says "You betcha" back to you.

Chan Geer Tri Fold Notebook Workshop



This is the front of Ken's notebook.



This is the back of the notebook.



Full layout of the notebook.



Notebook interior. For those of you who took any version of the magnetic closure notebook class, I am revising the notebook instruction document and will send it to you once Chan and I finish editing.

Eye Carving Workshop

Carving Eyes

At the July work session the emphasis was on eyes. Paula Marquis brought several calendars which had portrait photographs of various animals which were gone over in detail.



A sample of eyes carved in leather that Paula brought to the workshop.

Before getting into that, a simple explanation of the parts of the human and animal eye is a round ball covered with a membrane. At one side, which is exposed, is the cornea, iris, pupil, and lens. At the center is a fluid filled chamber, and at the rear the wall is covered with the retina. Light enters the eye through the cornea and is focused by the cornea and lens. It is then transmitted to the retina which converts the light rays into electrical impulses which the optic nerve sends to the brain. The amount of light allowed to enter the eye is controlled by the iris, which expands and contracts which determines the amount of light allowed through. This opening is the pupil. All this is very similar to the lens system of a camera. (Photo hint - The red eye in photos is the light reflecting off the retina. Have the people look a couple of feet away from the camera not at it, especially if using a flash. I like to have them look off my shoulder, this offset eliminates the red eye.)

Before doing a carving, study the subject. Use photographs. Calendars, reference books, and computers are useful tools. Photographs are preferable over drawings or paintings because did the artist do

this homework? Is everything correct?

Rule of thumb is that predators are forward looking and have their eyes facing forward. Examples are wolves, dogs, cats, some frogs, humans, owls. The forward look is for finding the prey and triangulation. Prey have their eyes facing sideways for a much wider field of view. Examples here are rabbits, deer, elk, chickens, doves, quail.

Not only are the eyes on the front and sides, some are "transitional", in that the eye socket of some animals is formed by any combination of the frontal, nasal, cheek, and upper mandible bones. This makes the eyes bulge out at the corners of the head. This is especially true in many of the grazing and browsing animals. Examples of these are cows, horses, elk, and pigs. They are still prey animals.

This arrangement allows the eye to turn from the front while feeding, fleeing, or traveling and to the side while in danger or on the alert.

Fleshed out and covered with hair, feathers, bare skin or scales, are the eyes flat, bulged out, or recessed? Is there a brow, if so, how pronounced? Are there folds over and under the eye, and if so, how many? Are there lashes, if so their directions, length, and shape. Is there the little bit of flesh on the inside corner, called the caruncula? Are there small blood vessels visible in the opaque portion of the cornea? Look at all the variations in the iris. The minute lines which radiate out from the pupil. What is the flow of the surrounding hair, feathers, or scales? Does the eye position flow evenly into the rest of the face? What is the shape of the pupil; round, horizontal slit, vertical slit, flat oval, or kidney?

The example for



Elk eye in leather.



A picture of an Elk eye.

the session was a bull elk eye and the scent gland located below the front corner of the eye. This gland is normally closed, but opens when the bull is bugling. He will also rub his face on trees and brush to leave his scent.

The tools needed for this exercise are swivel knife, maul/mallet, small and very small

figure bevellers, medium and small tipped modelers, filigree blade, and small embossing tool if needed. When transferring the pattern to the leather, do not trace the pupil. With a sharp swivel knife lightly cut the outline of the eye, and caruncula, if there is one. Very lightly bevel the eye, then with the modelers, round over the eyeball and remove all the stamp impressions. Continue this modeling until the eye is perfectly smooth. If needed, use the embossing tool to raise the center of the eye. Very lightly locate and draw the outer border of the iris. Do not draw the pupil. Using the medium beveler, start the folds around the eye if there are some. Finish shaping these folds and finish them off with the modelers. Shape and emboss (if needed) the brow area.

To slightly separate the eyeball from the eye lids, use a specialized tool, which is a curved blade, to very slightly undercut both the upper and lower eyelids from the eyeball. Slightly round the eyelid edge and smoothen it. When satisfied, go over the entire carving smoothing where needed. Switch blades in the swivel knife to a filigree blade. Frequently referring to the original picture; cut the lashes, brow, and surrounding hair. Feathers, if the subject is a bird. Watch the direction the hair/feathers lie. It is constantly changing, as is the texture, which may be coarse or fine.

Remove your watches and jewelry before starting any carving. Keep tools off the leather. Cut or protect the fingernails.

A future workshop is planned on the finishing of the eye.

Following are a few photos of examples by Paula of various eyes, and photos of actual animal eyes.

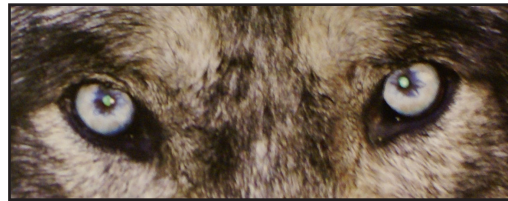
Norm Lynds



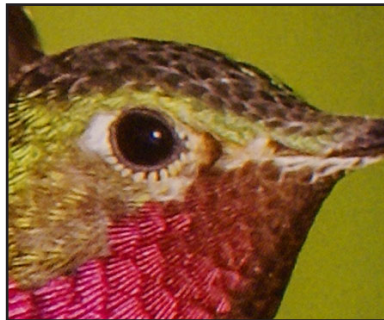
A picture of an Cougar eyes.



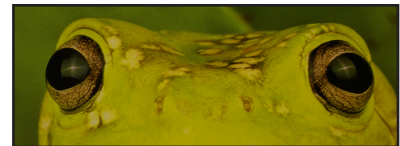
Eagle eyes.



Wolf



Hummingbird



Frog



Owl

Western Washington (Seattle/Tacoma/Everett) PSLAC CURRENT SCHEDULE FOR 2013

General Member's meetings are on the 2nd Sunday of each Month unless specified below. 1:00 PM to 4:00 PM approx.

• Meetings held at Cedar Grange Hall No. 534 at Maple Valley General meetings start at 1:00 PM followed by the mini-demos

Breakfast informal get-together locations:

North Breakfast >>> Last Friday of the month at 10:00 AM. Lake Forest Park Town Centre. 17917 Bothell Everett Hwy, Bothell, WA 98012 Bothell Way N, bordered by 170th N. & Ballinger Way N. Meet in the Third Place Books eating area

South Breakfast >>> 3rd Saturday of the month at 8:30 AM. Homestead. 7837 S Tacoma Way, Tacoma, WA 98409 (253) 476-9000

All Day-Workshop Schedule for 2013:

To Be Announced

Yearly General Meeting Schedule for 2013: Cedar Grange Hall No. 534 at Maple Valley

August 11 1:00—4:00 PM Cedar Grange General meeting. There will be a Bob Beard workshop in Spokane, details on page 1.

September 8 1:00—4:00 PM Cedar Grange General meeting. There will be a Peter Main workshop in Spokane, details on page 14.

October 13 1:00—4:00 PM Cedar Grange General meeting.

November 10 1:00—4:00 PM Cedar Grange General meeting.

December 8 1:00—4:00 PM Cedar Grange General meeting.

Eastern Washington (Tri –Cities) Desert LeatherCraft Group (DLG) PSLAC CURRENT SCHEDULE FOR 2013

Tri-Cities Desert LeatherCraft Group Member's meetings are on the 3rd Saturday of each month unless specified below:

• Informal meetings held at Spokane Tandy Leather Factory Store, 1702 North Monroe Street, Spokane, WA 99205 (Call (509) 328-9939 for directions).

Eastern Washington (Spokane) PSLAC East PSLAC CURRENT SCHEDULE FOR 2013

PSLAC East Member's meetings are on the 1st Saturday of each Month unless specified below. 9:30 AM to 12:30 PM approx.

Continued on next page

• Informal meetings held at Spokane Tandy Leather Factory Store, 1702 North Monroe Street, Spokane, WA 99205 Contact Ken Bush for time, date (normally the 1st Saturday) & details.

We are members of PSLAC-East (Puget Sound Leather Artisans Co-op). The East is because we are East of the Cascade Mountains. We offer classes in leathercraft at the Spokane Tandy Leather Factory store. These classes are free and open to the public. An informational newsletter is sent out prior to each class with a short description of the class, whom the instructor will be and what tools will be needed. We also schedule ad-hoc classes which are announced in the newsletter. To be on our mailing list for class notifications, please send an email (including your full name) to whiterosex@aol.com requesting to be on the PSLAC-East mailing list.

All Day-Workshop Schedule for 2013:

Upcoming events you won't want to miss! (more details for each class beginning on next page)

Bob Beard will present two 1 day classes from **17 August to 18 August 2013**

The first will be a 1 day class on creating custom leather buckles.

The second will be a 1 day class on creating leather feather earrings.

Peter Main will present a single 2 day class from **7 September to 8 September 2013**

The class will be on creating special leather jewelry and more information on it will be available after July

Ken Bush
White Rose Leather
11923 E. Fairview Ave.
Spokane Valley, WA 99206

509.926.2087
whiterosex@aol.com

Did You Know.....?

A Word to Our Readers

Please send your tips for "Did You Know ...?". What we'd like are short items on tricks you have discovered while working with leather which might be helpful to your fellow artisans. It could be a type of material or a technique or some other item that you have found useful in your leatherwork and you would be willing to share with others. So if you don't have an article (which we would also gladly accept!) but you may have a tip or trick that you have found works please drop us a line at dblyman@yahoo.com. Please include your name and email address so we can let others know who you are. Thank you. David Lyman, Editor

Peter Main Leather Jewelry Class

Dates: Sep 07 – 08, 2013 (Sat/Sun)

Time: 8 AM to 5 PM Saturday/Sunday

This is a 2 day class and features designing and constructing leather jewelry while learning Peter's various leather working techniques. More specific information will be available after July. Peter will also be showing us some of his hand sewing techniques. All skill levels from a moderately experienced beginner to a master leathercrafter are welcome to attend.

Location: [Lions Club, 16114 N. Meyer Rd, Rathdrum, Idaho](#). Easy to find, just 25 miles east of Spokane, WA via Trent Avenue (Hwy 53) or take I90 to Hwy 41 exit just east of Post Falls, ID and head north for 7 miles. Hwy 41 turns into Hwy 53 at light in Rathdrum. Go past High School and Super 1 Foods on right hand side then look for bright yellow bldg just east of Pine Grove Cemetery on left hand side. About 3 city blocks from light.

Cost: \$280. A \$140 non refundable deposit is required to reserve your spot. A maximum of 12 spots are available and the deadline for registration is Aug 16, 2013.

You can pay either by check or PayPal. To pay by check, make the check payable to Ken Bush and send it to me at the address below. If paying via PayPal. Go to www.paypal.com and send the payment to whiterosex@aol.com. Be sure to indicate that the payment is for Peter Main's class. If the class is cancelled for any reason, your deposit will be returned or your payment refunded via PayPal.

Things you will need to bring to class (per Peter): Your own carving tools of course. Peter will have a better list once he is able to announce the actual content of the class. Peter may be bringing some of his own specialty tools for sale.

Facilities: The Lions Club has 6 RV sites with electrical and water hookups

available for \$15 per night. Let us know in advance if you want one of these reserved for you. The Cedar Springs Bed and Breakfast (www.cedarsprings-bb.com) is located near Rathdrum. Call Ellen Larson at 888.441.9585 for accommodations and mention that you are taking the leather class.

Contact person:

Ken Bush

White Rose Leather 11923 E. Fairview Ave.

Spokane Valley, WA 99206

509.926.2087

whiterosex@aol.com



Here's a hint for the Peter Main workshop.
Sign up and find out more about it!

PSLAC Members Only Advertisements

Any PSLAC Member can advertise leather related products or services subject to approval. Just send your text, pictures and/or logo to webmaster@pslac.org

Sea Leather Wear Genuine Fish Leather Skins



For the custom manufacturing of shoes, handbags, and all sorts of apparel and accessories

Offering a 10% discount to the PSLAC members

<http://www.sealeatherwear.com>

Stanley Major

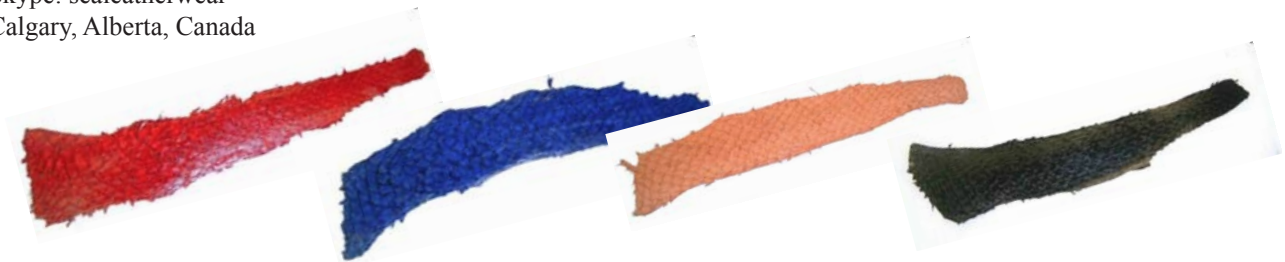
Customerservice@sealeatherwear.com

Skype: sealeatherwear

Calgary, Alberta, Canada



403-689-4701



Leather Accents Custom Stitching Horses & Clams

John Wickstrom—Maker

Beautiful handcrafted wood Call
for information 360-456-1688



Leather Big Book¹ Covers www.leatherbigbookcovers.com by Bob Stelmack, Desert Leathercraft LLC

*Let your imagination run wild
and have a **Custom Leather Big Book¹ Cover** made for you. The
covers will be "one-of-kind"
and are quite striking.*

¹The Big Book is a registered trademark
of Alcoholics Anonymous World
Services, Inc



www.leatherbigbookcovers.com

PSLAC Members Only Advertisement Page

Any PSLAC Member can advertise leather related products or services, subject to approval. Just send your text, picture and/or logo to webmaster@pslac.org

MARQUIS UNIQUE LEATHER ARTISTRY, LLC



I make almost anything that can be made from leather and can be sewn by hand. A lot of my works are 'bespoke items', meaning, one off, individual custom requests, ranging anywhere from books and folders to rifle scabbards, holsters and golf bags, fully carved and stamped, and any and all articles in between, which also includes moulded bowls and pictures.

Phone: (206)-523-6295
E-mail: marquispg@aol.com

www.marquisuniqueleather.com



Black Horse Leatherworks & Saddlery specializes in high quality & unique custom western tack and apparel. We make some English items such as Schooling chaps & Stall items. We make all our leather items one at a time, by hand per our clients specifications.

C.E. Gessell, Owner

Our Motto: If you can imagine it... we can create it!

Fantastic Leather Burnisher

- New and Improved
- Faster than ever
- Cuts burnishing time by 90%
- Improves quality and appearance
- Consistent finish in a single pass
- New products available



For more information
call 509-200-9353

View our eBay Store:

<http://stores.ebay.com/scentofleather>

Visa & Mastercard orders accepted by phone

New Edge Finishing System Available



Chan J. Geer
41 W. 7th Street
Sheridan, WY 82801

Custom Maker Stamps

Grey Ghost Graphics

By Jeff Mosby

Custom maker stamps, laser cut acrylic templates
and custom tapoffs for the leather craft field.
Custom cut from your artwork at reasonable rates!

P.O. Box 30268, Myrtle Beach, SC 29588
(866) 205-9810 or (843) 903-4788

www.greyghostgraphics.com



Norm Lynds, Toolmaker

Mallets, Modelers, embossing tools, lifters and
others on request

Phone: (425) 357-1001

E-mail: sagerat2003@yahoo.com

Leather Company Advertisement Page

Support our sponsors and take advantage of the PSLAC Membership Discounts...

Tandy Leather Factory

The Leather Factory #21 PORTLAND
Toll Free: 888-277-3360
13221 NE Whitaker Way Portland, OR 97230

Tandy Leather #126 SEATTLE
Toll Free: 866-220-9698
14713 Aurora Ave N Seattle, WA 98133

The Leather Factory #09 SPOKANE
Toll Free: 800-822-8437
28 W Boone Ave Spokane, WA 99201

Tandy Leather #124 TACOMA
Toll Free: 888-222-0510
13819-C Pacific Ave South Tacoma, WA 98444

Outside Washington (206) 328-0855
1-800-343-9949 Fax: 328-0859

MACPHERSON

Leather Company

Leather, Shoe Finding and Saddlery

Offering a 30-40% off retail discount to the PSLAC members

519 - 12th Avenue S.
Seattle, Washington 98144

www.macphersonleather.com



Toll Free:
(800) 541-3264
Bee Natural
Leathercare

The ultimate inleather care products

P.O. Box 820803, Vancouver, WA, 98682-0018
(360) 891-7178 , FAX: (360) 891-7166

E-mail: bnatura@pacifier.com

BRETTUNS VILLAGE LEATHER

Selling odd lots, miscellaneous overstocks, bargain leathers and leathercraft

accessories, all from Maine, only online

Sides, Full Hides, Buckles, Key Rings, Laces, Thread, Tools, Rivets, Scrap Pieces, Elk & Buffalo Scrap

Always Free Shipping in the 48 States

www.brettunsvillage.com

GLOBAL LEATHERS



Web site: www.globalleathers.com

Telephone : 212-244-5190

Fax : 212-594-7515

E-mail: globalleathers@usa.net

Paul Crystal

Offering a discount to the PSLAC members

Leather, Suede, Skins, Inc.

261 West 35th Street

11th Floor, New York, NY 10001

Tel: (212) 967-6616

Fax: (212) 564-5759

www.leathersuedeskins.com

Email: leather.suede.skins@att.net



Offering a 10% discount to the PSLAC members

Steve Derricott



Twister D Products

301 E. Bower St.

Meridian, Idaho 83742

(208) 884-3766 - Fax (208) 884-3767

A Division of Gfeller Casemakers, Inc.

www.lacemaster.com

Offering a 10% discount to the PSLAC members

Dusty Johnson

PLEASANT VALLEY SADDLE SHOP

1220 S. County Rd. 21

Loveland, CO 80537

Phone: (970) 669-1588

Fax: (970) 669-1589

E-Mail: dusty@pvsaddleshop.com

URL: <http://www.pvsaddleshop.com>



Offering a 10% discount to the PSLAC members

RawHide Gazette

Editor/Publisher : David Lyman

Co-Founders: Bill Churchill & General Seymour

Treasurer: George Marquis

Secretary: Paula Marquis

Directors: General Seymour, Ken Erickson, Len Madison, Roger Kaiser & Paula Marquis

The **RawHide Gazette** is published monthly (12 times a year).

Address for information and correspondence:

PSLAC, c/o Barbara Lourdes, PO Box 1144, Auburn, WA. 98071, USA

E-Mail: Billing@pslac.org

PSLAC Membership:

"a" - Internet access to **RawHide Gazette** including Memberonly area & meeting attendance \$10/year. (1 Person)

"b" - US Postal Mail **RawHide Gazette** including new Member articles & meeting attendance \$24/year. (1 Person)

"c" - Internet access to **RawHide Gazette** including Memberonly area & meeting attendance \$15 per year. (Family)

All submissions are subject to editing for clarity and length.

All articles submitted must be accompanied by name, address and permission of writer

Advertising Rates

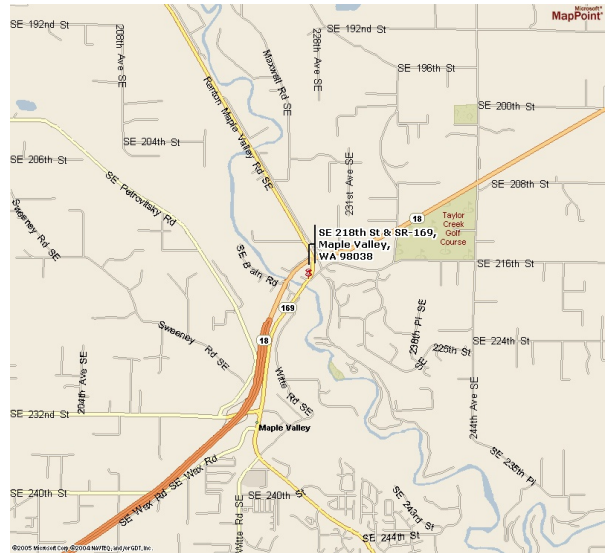
The **RawHide Gazette** offers advertising space to interested parties. Ad spaces are as follows:

1/4 Page or Business Card.....	\$60 USD
1/2 Page.....	\$110 USD
1 Full Page.....	\$200 USD

These rates cover a six month time period. PSLAC members are entitled to a 25% discount. Leather companies supporting PSLAC are given free Business Card size advertisement, additional space at regular rates.

The Puget Sound Leather Artisans Co-Op can be found at:

<http://www.pslac.org>



Directions to Cedar Grange #534:

From I-405 take the SR169 exit and proceed toward Maple Valley on the Maple Valley Highway. In about 10 Miles you will reach the SE 216th/SE 218th Street intersection. Turn Right onto SE 218th (the down-sloping hill on the left next to the Maple Valley Market parking lot) towards the big white/gray building next to the bridge (the Cedar Grange). The parking lot is on the first left.

From Highway 18 take the SE 231st, Junction 169, Maple Valley exit. Proceed to the Highway 169 (Maple Valley Highway) junction. Turn North (toward Renton) on Highway 169 and go about ¾ mile until you reach the SE 216th/SE 218th Street intersection. Turn left onto SE 218th (the down-sloping hill on the left next to the Maple Valley Market parking lot) towards the big white/gray building next to the bridge (the Cedar Grange). The parking lot is on the first left.

From Issaquah take Front Street toward Hobart and Highway 18. In about 10 miles get on Highway 18 West heading toward Maple Valley and Auburn. Follow the Highway 18 instructions.

PSLAC
c/o Barbara Lourdes
PO Box 1144
Auburn, WA 98071
USA