

# Raw Hide Gazette

"Without question, the Raw Hide Gazette is by far the best and most informative and comprehensive Guild publications of all of them! You are to be commended for your very fine and professional efforts. Keep up the good work. With admiration"  
/signed/  
Al & Ann Stohlman, December 1997

Copyright © 2013 by PSLAC, All Rights Reserved

Puget Sound Leather Artisans Co-Op

February 2014

## Cascade Mountain Men Show

### Hide Highlights

#### Page

- 3.....Spokane Workshop
- 4.....Workshop Report
- 5.....Western Washington PSLAC Schedules
- 6.....Eastern Washington PSLAC Schedules
- 6.....Did You Know.....?
- 7.....Advertisements
- 10...Map & Directions

### Cascade Mountain Men Show 2013 at Monroe Fairgrounds

Went to the Cascade Mountain Men Show last year and took some friends and our friend Bill brought his grandson and son-in-law. They had a great time, in fact they have been coming for the last three years. They are all coming again this year.

The photos only show a very small portion of all the good things to see and buy. Last year I purchased a very beautiful Black Bear hide and a quantity of Bobcat claws. The previous year I bought a number



of skins, among them a nice skunk (the skins don't smell and the fur is nice). Also bought a nice white horn and when I get time I'm going to try burning it.

Tandy also has a stand at the show.

I suggest you read Ken's article on the Cascade Mountain Men Show (see next page) to get all the information and hope to see you all there.

February 2014 - ~~Hide~~Side 1



This year the show is on March 8-9 at the Evergreen State Fairgrounds in Monroe, WA.

Paula Marquis



Some of the items Ken had for sale at the show.



**Next Meeting on  
Sunday March 9th at  
1:00 PM**

Meet at *The Cedar Grange Hall*  
*No. 534 at Maple Valley*  
(See last page for map  
& directions)

Continued on next page

# Cascade Mountain Men Show

## Cascade Mountain Men Muzzle Loading Arms and Pioneer Craft Show 2014

Well, winter is almost over and we're looking forward to spring and the Cascade Mountain Men black powder gun and craft show, well maybe not all of you, but I look forward to the middle of March for that show every year. See the flyer for the show here in the Gazette (next page), next weekend 3/8 and 3/9, 9 to 5 on Saturday and 9 to 3 on Sunday. The Cascade Mountain Men show is in, I think, its 28th year; it started in a grade school cafeteria in South Seattle, and slowly expanded to larger venues



in community centers and eventually to the Puyallup Fairgrounds, then to the King County Fairgrounds and we're now in a brand-new building at the Evergreen State Fairgrounds in Monroe, WA, large, warm and well lighted. There are black



Bill Purcell

powder guns, and parts and shooting supplies, but it's also about all of the different crafts that go with reenactment of the colonial period for the US, through fur trade/mountain man era, up to the Civil War period (1700's through about 1865). We

have over 300 vendors selling period clothing, material and camping gear, shooting supplies, muzzle loading guns and parts and tools, leather (cow and deer), rawhide, beads and beading supplies, art, bow and arrow crafting, and historical and how-to books. The vendors dress-up in period clothing and many of the people from the black powder



shooting clubs in the area also dress-up, and make a day of it, very colorful. I've had a couple of tables at the show for about the last 15 years and you'll also see Andy and Pat from Tandy there is well. Come out and see us this coming Saturday or Sunday (though hopefully on Sunday you'll be at the PSLAC meeting).



Ken Eriksen



Letty Lynds





# Cascade Mountain Men Muzzle Loading Arms and Pioneer Craft Show

**March 8 & 9, 2014**

Saturday 9 am to 5 pm / Sunday 9 am to 3 pm

## Evergreen State Fairgrounds Monroe, Washington

Presented by Cascade Mountain Men, Inc.

Commemorating the Fur Trade & Colonial America

**50th Anniversary of CMM**

**Traditional (pre-1840) Muzzle Loading Firearms** (original, custom and production replicas, gun building kits). Come talk to custom gun builders. Learn about their crafts. **Muzzle Loading Gun Parts and Accessories - Shooting Supplies - Leather and Fur Goods - Period Clothing and Camping Gear - Early & Native American Crafts - Trade Goods - Craft Supplies - Beads - Art - Historical and How-to Books**

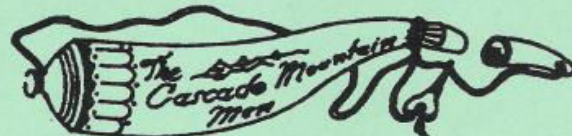
**LARGEST SHOW of its KIND!!!** More than 300 traders and exhibitors from across the country.

**LIVE DEMONSTRATIONS:** Blacksmith making hand forged iron/steel implements of the period. **Wool Spinning - Hand weaving - Wood Carving** and more. See how the pioneers and buck skiners lived on the trail.

**Admission: \$5 per day**

**FREE parking**

Under 16 must be accompanied  
by an adult. Ages 12 and under are  
admitted **FREE**



PO Box 1296

Issaquah, WA 98027-1296

For Trader information: 425-890-7208

For directions visit: [www.evergreenfair.org/sitemap.html](http://www.evergreenfair.org/sitemap.html)



# Spokane Workshop

I ran two classes this month at the Spokane Tandy store. The first one was an open Sheridan carving class using the craftaids that Tandy has. There were 5 in attendance and all had a good time learning a Sheridan style on various flowers and leaves. Also they saw the value of Sheridan style tools compared to the normal type for western floral.



The second class involved doing a Chan Geer design for a wallet back which when done they could come back the following week and Ken & Jackie would demonstrate and instruct on coloring using Tandy's Eco Flo colors.



Sheridan wallet back.

I've also include a photo of our cows for Dusty! Woody



# Workshop Report

---

## WORKSHOP REPORT - FEBRUARY 2014.

Due to our snowfall on the day of the February Meeting, essentially the meeting was cancelled and all the members that were able to be contacted were informed of the cancellation.

Paula couldn't be contacted so went to the meeting and Roger met her there and they decided to wait until 1:15 pm in case any members from far away showed up that could not be contacted. Nobody came, so those who could not be contacted obviously were snowed in.

So, this meeting in March we will have the same workshop (tooling fangs and teeth) scheduled for February.

Would also like to let everybody know that the Mountain Man Show is on the same weekend as our Meeting (second weekend in March), and Ken Eriksen will again have his booth (he's a mountain man of long standing). Most of the members that go to the Show go on the Saturday so can still come to the meeting on Sunday. Its an interesting show and well worth a visit.

Bring all the tools for the workshop at the meeting that you had packed and ready last month. See you all there.

Len Madison  
Workshop Co-Ordinator

## Western Washington (Seattle/Tacoma/Everett) PSLAC CURRENT SCHEDULE FOR 2014

**General Member's meetings** are on the 2nd Sunday of each Month unless specified below. 1:00 PM to 4:00 PM approx.

• Meetings held at Cedar Grange Hall No. 534 at Maple Valley General meetings start at 1:00 PM followed by the mini-demos

### Breakfast informal get-together locations:

**North Breakfast** >>> Last Friday of the month at 10:00 AM. Lake Forest Park Town Centre. 17917 Bothell Everett Hwy, Bothell, WA 98012 Bothell Way N, bordered by 170th N. & Ballinger Way N. Meet in the Third Place Books eating area

**South Breakfast** >>> 3rd Saturday of the month at 8:30 AM. Homestead. 7837 S Tacoma Way, Tacoma, WA 98409 (253) 476-9000

### All Day-Workshop Schedule for 2014:

TBA

**March 9** 1:00—4:00 PM Cedar Grange General meeting. We will be tooling fangs, teeth, etc.

**April 13** 1:00—4:00 PM Cedar Grange General meeting.

**May 11** 1:00—4:00 PM Cedar Grange General meeting.

**June 8** 1:00—4:00 PM Cedar Grange General meeting.

**July 13** 1:00—4:00 PM Cedar Grange General meeting.

**August 10** 1:00—4:00 PM Cedar Grange General meeting.

**Sept 14** 1:00—4:00 PM Cedar Grange General meeting.

**October 12** 1:00—4:00 PM Cedar Grange General meeting.

**Nov 9** 1:00—4:00 PM Cedar Grange General meeting.

**Dec 14** 1:00—4:00 PM Cedar Grange General meeting.

## Eastern Washington (Tri –Cities) Desert LeatherCraft Group (DLG) PSLAC CURRENT SCHEDULE FOR 2014

**Tri-Cities Desert LeatherCraft Group Member's meetings** are on the 3rd Saturday of each month unless specified below:

- Informal meetings held at Spokane Tandy Leather Factory Store, 1702 North Monroe Street, Spokane, WA 99205 (Call (509) 328-9939 for directions).

## Eastern Washington (Spokane) PSLAC East PSLAC CURRENT SCHEDULE FOR 2014

**PSLAC East Member's meetings** are on the 1st Saturday of each Month unless specified below. 9:30 AM to 12:30 PM approx.

- Informal meetings held at Spokane Tandy Leather Factory Store, 1702 North Monroe Street, Spokane, WA 99205 Contact Ken Bush for time, date (normally the 1st Saturday) & details.

We are members of PSLAC-East (Puget Sound Leather Artisans Co-op). The East is because we are East of the Cascade Mountains. We offer classes in leathercraft at the Spokane Tandy Leather Factory store. These classes are free and open to the public. An informational newsletter is sent out prior to each class with a short description of the class, whom the instructor will be and what tools will be needed. We also schedule ad-hoc classes which are announced in the newsletter. To be on our mailing list for class notifications, please send an email (including your full name) to whiterosex@aol.com requesting to be on the PSLAC-East mailing list.

### All Day-Workshop Schedule for 2014:

Ideas for Future classes: Masks, Sporrans, Holsters – w/clip, Embossing, Celtic knot carving, Picture frames, Horse Tack

Ken Bush  
White Rose Leather  
11923 E. Fairview Ave.  
Spokane Valley, WA 99206, 509.926.2087

## Did You Know.....?

### A Word to Our Readers

Please send your tips for "Did You Know ...?". What we'd like are short items on tricks you have discovered while working with leather which might be helpful to your fellow artisans. It could be a type of material or a technique or some other item that you have found useful in your leatherwork and you would be willing to share with others. So if you don't have an article (which we would also gladly accept!) but you may have a tip or trick that you have found works please drop us a line at dblyman@yahoo.com. Please include your name and email address so we can let others know who you are. Thank you. David Lyman, Editor

# PSLAC Members Only Advertisements

Any PSLAC Member can advertise leather related products or services subject to approval. Just send your text, pictures and/or logo to [webmaster@pslac.org](mailto:webmaster@pslac.org)

## Sea Leather Wear Genuine Fish Leather Skins



For the custom manufacturing of shoes, handbags, and all sorts of apparel and accessories

Offering a 10% discount to the PSLAC members



<http://www.sealeatherwear.com>

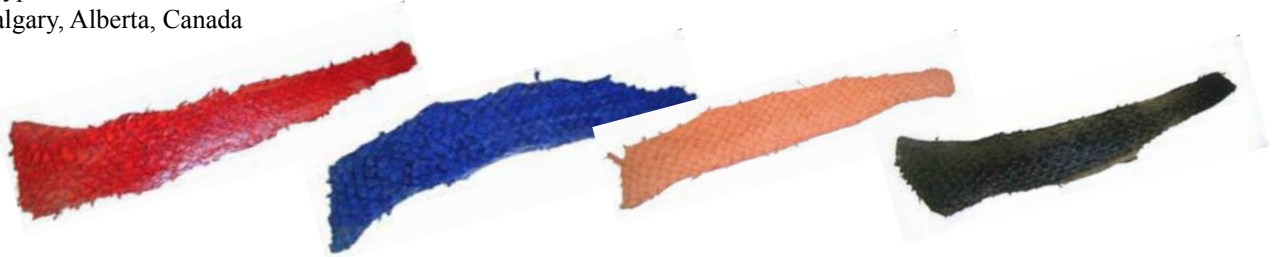
Stanley Major

Customerservice@sealeatherwear.com

Skype: sealeatherwear

Calgary, Alberta, Canada

403-689-4701



## Leather Accents Custom Stitching Horses & Clams

John Wickstrom—Maker

Beautiful handcrafted wood Call  
for information 360-456-1688



## Leather Big Book<sup>1</sup> Covers [www.leatherbigbookcovers.com](http://www.leatherbigbookcovers.com) by Bob Stelmack, Desert Leathercraft LLC

Let your imagination run wild  
and have a **Custom Leather Big  
Book<sup>1</sup> Cover** made for you. The  
covers will be "one-of-kind"  
and are quite striking.

<sup>1</sup>The Big Book is a registered trademark  
of Alcoholics Anonymous World  
Services, Inc



[www.leatherbigbookcovers.com](http://www.leatherbigbookcovers.com)



# PSLAC Members Only Advertisement Page

Any PSLAC Member can advertise leather related products or services, subject to approval. Just send your text, picture and/or logo to [webmaster@pslac.org](mailto:webmaster@pslac.org)

## MARQUIS UNIQUE LEATHER ARTISTRY, LLC



I make almost anything that can be made from leather and can be sewn by hand. A lot of my works are 'bespoke items', meaning, one off, individual custom requests, ranging anywhere from books and folders to rifle scabbards, holsters and golf bags, fully carved and stamped, and any and all articles in between, which also includes moulded bowls and pictures.

Phone: (206)-523-6295  
E-mail: [marquispg@aol.com](mailto:marquispg@aol.com)

[www.marquisuniqueleather.com](http://www.marquisuniqueleather.com)



## Custom Maker Stamps

Grey Ghost Graphics

By Jeff Mosby

Custom maker stamps, laser cut acrylic templates  
and custom tapoffs for the leather craft field.  
Custom cut from your artwork at reasonable rates!

P.O. Box 30268, Myrtle Beach, SC 29588  
(866) 205-9810 or (843) 903-4788

[www.greyghostgraphics.com](http://www.greyghostgraphics.com)



**Black Horse Leatherworks & Saddlery** specializes in high quality & unique custom western tack and apparel. We make some English items such as Schooling chaps & Stall items. We make all our leather items one at a time, by hand per our clients specifications.

**C.E. Gessell, Owner**

*Our Motto: If you can imagine it... we can create it!*

## Fantastic Leather Burnisher

- ▶ New and Improved
- ▶ Faster than ever
- ▶ Cuts burnishing time by 90%
- ▶ Improves quality and appearance
- ▶ Consistent finish in a single pass
- ▶ New products available



For more information  
call 509-200-9353

View our eBay Store:

<http://stores.ebay.com/scentofleather>

Visa & Mastercard orders accepted by phone

**New Edge Finishing System Available**



## Norm Lynds, Toolmaker

Mallets, Modelers, embossing tools, lifters and others on request

Phone: (425) 357-1001

E-mail: [sagerat2003@yahoo.com](mailto:sagerat2003@yahoo.com)

# Leather Company Advertisement Page

Support our sponsors and take advantage of the PSLAC Membership Discounts...

## Tandy Leather Factory

The Leather Factory #21 PORTLAND  
Toll Free: 888-277-3360  
13221 NE Whitaker Way Portland, OR 97230

Tandy Leather #126 SEATTLE  
Toll Free: 866-220-9698  
14713 Aurora Ave N Seattle, WA 98133

The Leather Factory #09 SPOKANE  
Toll Free: 800-822-8437  
28 W Boone Ave Spokane, WA 99201

Tandy Leather #124 TACOMA  
Toll Free: 888-222-0510  
13819-C Pacific Ave South Tacoma, WA 98444

Outside Washington (206) 328-0855  
1-800-343-9949 Fax: 328-0859

### MACPHERSON

#### Leather Company

Leather, Shoe Finding and Saddlery

*Offering a 30-40% off retail discount to the PSLAC members*

519 - 12th Avenue S.  
Seattle, Washington 98144

[www.macphersonleather.com](http://www.macphersonleather.com)



Toll Free:  
(800) 541-3264  
Bee Natural  
Leathercare

*The ultimate inleather care  
products*

P.O. Box 820803, Vancouver, WA, 98682-0018

(360) 891-7178 , FAX: (360) 891-7166

E-mail: [bnatura@pacifier.com](mailto:bnatura@pacifier.com)

### BRETTUNS VILLAGE LEATHER

Selling odd lots, miscellaneous overstocks, bargain leathers  
and leathercraft

accessories, all from Maine, only online

Sides, Full Hides, Buckles, Key Rings, Laces,  
Thread, Tools, Rivets, Scrap Pieces, Elk & Buffalo  
Scrap

Always Free Shipping in the 48 States

[www.brettunsvillage.com](http://www.brettunsvillage.com)

## GLOBAL LEATHERS



Web site: [www.globalleathers.com](http://www.globalleathers.com)

Telephone : 212-244-5190

Fax : 212-594-7515

E-mail: [globalleathers@usa.net](mailto:globalleathers@usa.net)

Paul Crystal

*Offering a discount to the PSLAC members*

## Leather, Suede, Skins, Inc.

261 West 35th Street

11th Floor, New York, NY 10001

Tel: (212) 967-6616

Fax: (212) 564-5759

[www.leathersuedeskins.com](http://www.leathersuedeskins.com)

Email: [leather.suede.skis@att.net](mailto:leather.suede.skis@att.net)



*Offering a 10% discount to the PSLAC members*

## Steve Derricott



Twister D Products

301 E. Bower St.

Meridian, Idaho 83742

(208) 884-3766 - Fax (208) 884-3767

A Division of Gfeller Casemakers, Inc.

[www.lacemaster.com](http://www.lacemaster.com)

*Offering a 10% discount to the PSLAC members*



## Dusty Johnson

PLEASANT VALLEY SADDLE SHOP

1220 S. County Rd. 21

Loveland, CO 80537

Phone: (970) 669-1588

Fax: (970) 669-1589

E-Mail: [dusty@pvsaddleshop.com](mailto:dusty@pvsaddleshop.com)

URL: <http://www.pvsaddleshop.com>

*Offering a 10% discount to the PSLAC members*

# RawHide Gazette

**Editor/Publisher :** David Lyman

**Co-Founders:** Bill Churchill & General Seymour

**Treasurer:** George Marquis

**Secretary:** Paula Marquis

**Directors:** Ken Erickson, Len Madison, Roger Kaiser, Paula Marquis & Norm Lynds

The **RawHide Gazette** is published monthly (12 times a year).

Address for information and correspondence:

PSLAC, c/o George Marquis, PO Box 25816, Seattle, WA 98165, USA

E-Mail: [Billing@pslac.org](mailto:Billing@pslac.org)

PSLAC Membership:

“a” - Internet access to **RawHide Gazette** including Member only area & meeting attendance \$20/year. (1 Person)

“b” - US Postal Mail copy of **RawHide Gazette** including new Member only articles & meeting attendance \$30/year. (1 Person)

“j” — Junior (16 and under) Internet access to **RawHide Gazette** including Member only area and meeting attendance \$10 per year.

All submissions are subject to editing for clarity and length.

All articles submitted must be accompanied by name, address and permission of writer

### Advertising Rates

The **RawHide Gazette** offers advertising space to interested parties.

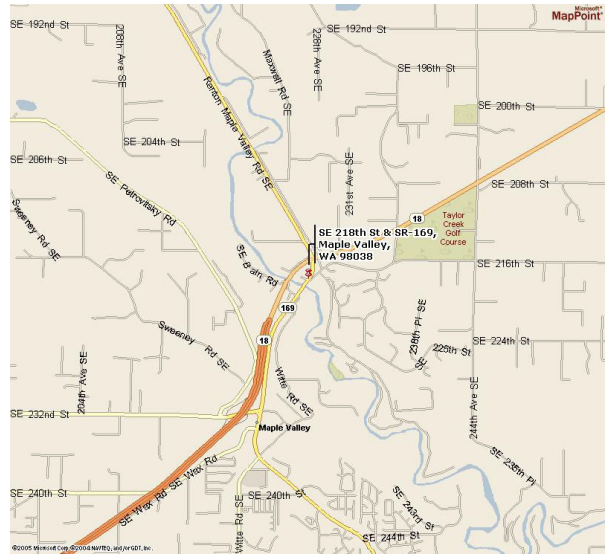
Ad spaces are as follows:

1/4 Page or Business Card.....	\$60 USD
1/2 Page.....	\$110 USD
1 Full Page.....	\$200 USD

These rates cover a six month time period. PSLAC members are entitled to a 25% discount. Leather companies supporting PSLAC are given free Business Card size advertisement, additional space at regular rates.

The Puget Sound Leather Artisans Co-Op can be found at:

<http://www.pslac.org>



### Directions to Cedar Grange #534:

**From I-405** take the SR169 exit and proceed toward Maple Valley on the Maple Valley Highway. In about 10 Miles you will reach the SE 216th/SE 218th Street intersection. Turn Right onto SE 218th (the down-sloping hill on the left next to the Maple Valley Market parking lot) towards the big white/gray building next to the bridge (the Cedar Grange). The parking lot is on the first left.

**From Highway 18** take the SE 231st, Junction 169, Maple Valley exit. Proceed to the Highway 169 (Maple Valley Highway) junction. Turn North (toward Renton) on Highway 169 and go about ¾ mile until you reach the SE 216th/SE 218th Street intersection. Turn left onto SE 218th (the down-sloping hill on the left next to the Maple Valley Market parking lot) towards the big white/gray building next to the bridge (the Cedar Grange). The parking lot is on the first left.

**From Issaquah** take Front Street toward Hobart and Highway 18. In about 10 miles get on Highway 18 West heading toward Maple Valley and Auburn. Follow the Highway 18 instructions.

**PSLAC**  
**c/o George Marquis**  
**PO Box 25816**  
**Seattle, WA 98165**  
**USA**