

Raw Hide Gazette

“Without question, the Raw Hide Gazette is by far the best and most informative and comprehensive Guild publications of all of them! You are to be commended for your very fine and professional efforts. Keep up the good work. With admiration”
/signed/
Al & Ann Stohlman, December 1997

Copyright © 2013 by PSLAC, All Rights Reserved

Puget Sound Leather Artisans Co-Op

June 2014

Constructing a Mini Draw Down Stand

Hide Highlights

Page

- 4.....Ken's Knothole July 2014
- 5.....Chan Geer Workshop Results
- 7.....Workshop Report
- 8.....Peter Main Leather Jewelry Class
- 9.....Western Washington PSLAC Schedules
- 10...Eastern Washington PSLAC Schedules
- 10...Did You Know.....?
- 11...Advertisements
- 14...Map & Directions

Paula had acquired a small western saddle tree, approximately half scale, as it was just over 12 inches long. It is made of wood with a cast bronze horn, covered with fiberglass and resin. She requested that I make a draw down stand for it, using Al Stohlman's Encyclopedia of Saddle Making as reference. I was to make the stand, and she would add some light padding and a leather cover to the top



Mini tree on mockup 2.

section.

As it is to be a working stand, it had to be stable and sturdy enough to stand up under the stress that would be applied by the draw down strap under pressure when shaping the leather to the seat. Dimension wise, the only measurement necessary to meet was the height which was to be 34 inches. For stability and operation of the pull down lever I kept the length at 18 inches. Using the bulkhead patterns page 207 of Volume 1 of the encyclopedia I scaled them

down to just over half size and cut out the patterns.

A cardboard mock up was made to verify these dimensions. A piece of scrap lumber was crosscut to hold the cardboard. I wanted bulkhead #2 beneath the fork, and #3 under the cantle. The spacing for the bulkheads was #2 was 5.5 inches from #1; #3 was 5.5 inches from #2; and #4 was 7 inches from #3. Center lines were drawn on each of the baffles, and down the center of the piece they were being attached to. This to keep everything centered. The cardboard bulkheads were put in place and taped down with, what else, duct tape. Strips of cardboard were then taped in place. The tree was put in place and it took very little tweeking to correct the dimensions of the baffles. New patterns were made and the baffles were cut out of plywood.

As the top was eventually to be padded and covered, it was decided to make the top out of steam bent cedar strips. Slats 3/16" thick were cut



Baffle patterns.

from a piece of lumber. These were placed in a bucket of water to soak for awhile.

The baffles were

Continued on next page

Next Meeting on
Sunday July 13th at
1:00 PM

Meet at The Cedar Grange Hall
No. 534 at Maple Valley
(See last page for map & directions)

Constructing a Mini Draw Down Stand



Draw down top section.

completely flat on the surface. All the sharp edges were rounded over and sanded. Calculations were made, including the thickness of the eventual feet, for the length of the legs. The front legs were cut 30" and the rear 31" long from. Then, each of the legs was marked at 26 inches and a saw cut a little more than 1/8" made and a shelf made for the baffles to sit on. As the waist of the stand is narrower than the ends, each of the legs has to be made to fit. Each of these corners was cut and a rasp used to shape them until they were properly fitted.

Blocks 1 1/2 thick by 2 3/4 long by 2 1/2 wide were fashioned and glued in place 4" from the lower end of the rear legs. (Prior to making the blocks the back legs were clamped in place and the distance between them measured. Calculations were made to determine the distance required between them to allow sufficient distance for

tacked in place on a piece of scrap then started attaching the wet strips to the baffles, bending them to shape, using a heat gun where necessary, using a staple gun to attach them. After this was completed, the unit was set

After coating the piece with Dyken, first a layout line was drawn down the center of the piece and 12 locations were placed at 3/4" distances apart. 1/8" holes were drilled at each of these locations. An adjustable



Some mini draw down stand parts.



Mini draw down stand, front view.

aside to dry out.

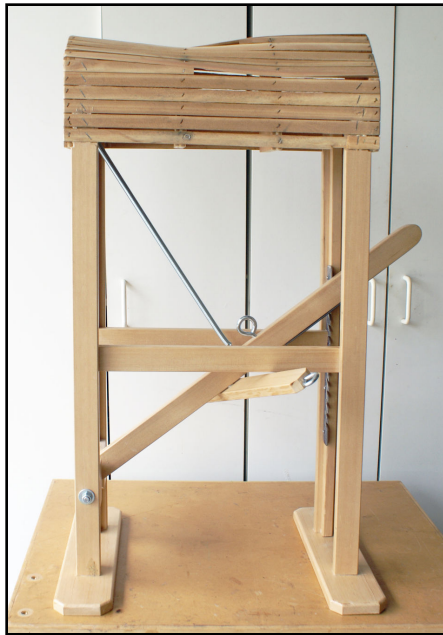
Lumber and hardware supplies needed to construct the lower portion of the stand were obtained. Defect free, straight grain fir was selected for the wooden parts as it is strong, stable, and attractive. 1 x 2 for the legs, and 1 x 4 for the feet. A piece of 1/8" by 1 1/4" metal was to be used for the ratchet.

While waiting for the top to dry, the ratchet was made from a 12 inch piece of the metal.

protractor was then used to lay out the angles for the teeth. These were then hacksawed and the tops of the teeth rounded over and the cuts cleaned up with files. Four 1/8" mounting holes were drilled 1/4" from the back edge. A 4 1/2" piece of the metal was cut for use as the ratchet plate, and 3 1/8" mounting holes drilled.

After the top was completely dry it was laid on a flat surface to ascertain that the baffles, especially #1 and #4 were

Constructing a Mini Draw Down Stand



Mini draw down stand, side view.

the draw down lever, 2 washers, and a very slight amount of wobble room. This was what determined how wide each of the blocks was to be.) A piece of the 1 x 2 was ripped in half, and the pieces glued, centered, on the inner surfaces of all of the legs. This was done for strength, stability, looks, and a mounting



Ratchet and underside of draw down lever.

surface for the ratchet.

Each of the sets of legs, front and rear, was glued, clamped, and finish nailed in place and let sit while the glue set up and dried. After the clamps were removed, each of the legs was stapled to the cedar strips.

While the glue was drying the feet were made from the 1 x 4, which was cut 12 inches long. Each of the corners was cut at a 45 degree angle and all the top surfaces were rounded over with a 1/4" router bit. They were then attached to the legs with glue and finish nails and left for the glue to dry.

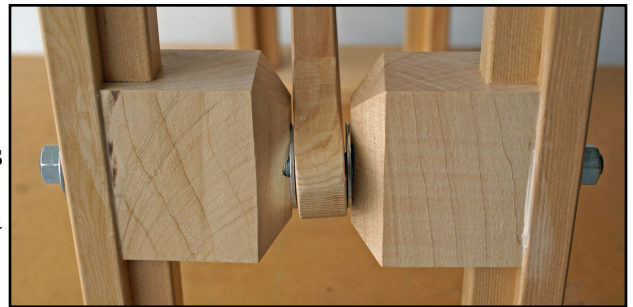
Location for the hole for the threaded rod used to attach the draw down lever was marked, centered on the rear leg at 6 1/4 inches from the foot. A long 3/8" drill was used to bore this hole through both legs, centered on the blocks. (The draw down lever in the encyclopedia is made to be foot operated. As this one is being made for a mini saddle, I made it to be a hand operated lever, as less pressure will be needed when forming the leather.)

The ratchet was attached to the inner surface of the left front leg with screws. A length of 1 x 2 was cut for the draw down lever, and one end rounded over, and a 3/8" hole bored in the center of the half circle. The drill rod was then pushed through one leg, a washer, the lever, a second washer, and the other leg. Location for the ratchet plate was marked, as was the length of the lever which was to extend about 4" in front of the front of the stand. The lever was removed, cut to length and the end rounded over and the bed for the ratchet plate was formed giving it the same angle as the teeth on the ratchet. The plate was then screwed in place. Hooks were

installed in the back baffle and the drawdown lever and a screen door spring strung between them. This will keep the lever in a high position when not in use. A loop for the draw down strap was installed and the lever reinstalled. Stretchers between the front and rear legs were cut and glued in place 13 inches above the feet.

The wood pieces of the base were finish sanded and given 1 coat of sanding sealer and 2 coats of Varathane finish prior to final assembly. The drill rod was cut to length and held in place with nuts.

When presented it to Paula, OOPS!!! I had forgotten the draw down bar which had been lightly drawn on the copy given to me. It's position was indicated on the lever. One, 17 inches long with



Rear leg draw down lever assembly.

beveled ends was made up and finished. Loops were installed on each end and it was affixed to the lever with a 1/4" lag bolt.

(If I were to do this project again, a jig would be made and the baffles would be screwed tightly in place. This would be done to eliminate the slight distortions that had occurred during the drying stage of the top.)

Norm Lynds

We had great PSLAC June BBQ and Leather Garage sale, with a pretty good turnout. It was good to see some folks that haven't been able to make it to meetings for awhile, and a new face or two. Hopefully the turnout trend will continue. We are going to try holding meetings in July and August, instead of taking the summer off as we've done in times past. We have John Wickstrom leading us through coloring the floral designs that were worked on in April. John showed us an exercise he did in swivel life carving finesse that was very clean, I got a picture of it, but forgot to get it into the May RG, see below. In August, we have Fred Nachbar leading us using ink pens to color a decorative stamped rounder, that we worked on at the May meeting. I've read about this way of coloring, but I've never tried it and I'm looking forward giving it a whirl. Also in April, I brought in and showed folks some flexible replaceable knife blades that I got from Duluth Traders (pic). I didn't

show folks by the August meeting and get some pics for the RG. See you all then.

Ken Erichsen



John Wickstrom's swivel knife finesse.



Replaceable knife blades.

want to spend the money on the handles for them, I was hoping they'd fit on the larger scalpel handles, but no joy on that. Norm and I are going to work on making some handles for them, hopefully we'll have it done to

Chan Geer Workshop Results



Chan Geer showing how its done.

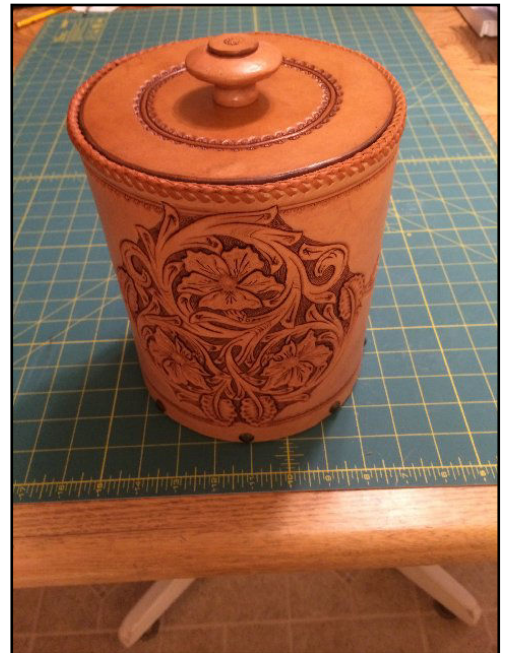
In May Chan Geer came to Rathdrum, Idaho and conducted a workshop on making a jogger wallet and a flower pot. Here are a few pictures Paula Marquis took at the workshop.



A fine collection of flower pots produced by the leather artists at Chan's class.



Chan discusses some fine points with Woody Collins.



Ken Bush made a few modifications and turned his flower pot into an ice bucket.

Chan Geer Workshop Results



Looks like the group filled the Rathdrum Lion's Club.



Everyone hard at work. Chan always keeps you busy!



Paula's so intent on her work she didn't notice someone stole her camera and took her picture!

WORKSHOP REPORT June 2014

At the May meeting we tooled some floral patterns with John Wickstrom and we will be dyeing and antiquing this at the July meeting. Below is a list of what John has given us to bring. John purchases his dyes and antiques from Tandy.

Super Shene

Brushes for fine detail work and some larger brushes for larger areas.

Eco-flow dyes (colors are personal choice)

Small cups or paint pallets to work from.

Paper Towels

Hair dryer

Professional Dyes

Professional Finish

Hi-Liter (any color)

Eye dropper

Another workshop in progress is the other items we tooled at the May meeting, which can be any shape, rounders, squares, etc. and they were stamped with geometric tools, 3-D stamps, etc.

At the August meeting we will be coloring these with pens. Fred Nachbar is very good at this and he will lead the class in the coloring with pens. August meeting should be a lot of fun.



Len Madison
Workshop Co-Ordinator.

Dates: Sep 13 – 14, 2014
(Sat/Sun)
Time: 8 AM to 5 PM
Saturday/Sunday

This is a 2 day class and features inverted carving of a 6"x8" spiral bound notepad. The edges will be leather wrapped instead of lacing or sewing while we learn Peter's various leather working techniques. All skill levels from a moderately experienced beginner to a master leathercrafter are welcome to attend.

Location: Lions Club, 16114 N. Meyer Rd, Rathdrum, Idaho. Easy to find, just 25 miles east of Spokane, WA via Trent Avenue (Hwy 53) or take I90 to Hwy 41 exit just east of Post Falls, ID and head north for 7 miles. Hwy 41 turns into Hwy 53 at light in Rathdrum. Go past High School and Super 1 Foods on right hand side then look for bright yellow bldg just east of Pine Grove Cemetery on left hand side. About 3 city blocks from light.

Cost: \$325. The cost includes his kit containing all materials needed for the class. A \$150 non refundable deposit is required to reserve your spot. A maximum of 12 spots are available and the deadline for registration is Aug 16, 2013.

You can pay either by check or PayPal. To pay by check, make the check payable to Ken Bush and send it to me at the address below. If paying via PayPal. Go to www.paypal.com and send the payment to whiterosex@aol.com. Be sure to indicate that the payment is for Peter Main's class. If the class is cancelled for any reason, your deposit will be returned or your payment refunded via PayPal.

Tools: Things you will need to bring to class (per Peter): Your own carving tools of



course. Peter will have a better list later this Summer.

Peter may be bringing some of his own specialty tools for sale.

Facilities: The Lions Club has 6 RV sites with electrical and water hookups available for \$15 per night. Let us know in advance if you want one of these reserved for you. The Cedar Springs Bed and Breakfast (www.cedarsprings-bb.com) is located near Rathdrum. Call Ellen Larson at 888.441.9585 for accommodations and mention that you are taking the leather class.

Contact person:
Ken Bush
White Rose Leather
11923 E. Fairview Ave.
Spokane Valley, WA 99206
509.294.1883
whiterosex@aol.com

Western Washington (Seattle/Tacoma/Everett)
PSLAC CURRENT SCHEDULE FOR 2014

General Member's meetings are on the 2nd Sunday of each Month unless specified below. 1:00 PM to 4:00 PM approx.

• Meetings held at Cedar Grange Hall No. 534 at Maple Valley General meetings start at 1:00 PM followed by the mini-demos

Breakfast informal get-together locations:

North Breakfast >>> Last Friday of the month at 10:00 AM. Lake Forest Park Town Centre. 17917 Bothell Everett Hwy, Bothell, WA 98012 Bothell Way N, bordered by 170th N. & Ballinger Way N. Meet in the Third Place Books eating area

South Breakfast >>> 3rd Saturday of the month at 8:30 AM. Homestead. 7837 S Tacoma Way, Tacoma, WA 98409 (253) 476-9000

All Day-Workshop Schedule for 2014:

TBA

July 13 1:00—4:00 PM Cedar Grange General meeting. Methods of dyeing and antiquing.

August 10 1:00—4:00 PM Cedar Grange General meeting.

Sept 5-21 Washington State Fair, Puyallup.

Sept 14 1:00—4:00 PM Cedar Grange General meeting.

Sept 13-14 Peter Main workshop in Spokane.

October 12 1:00—4:00 PM Cedar Grange General meeting.

Nov 9 1:00—4:00 PM Cedar Grange General meeting.

Dec 14 1:00—4:00 PM Cedar Grange General meeting.

Eastern Washington (Tri –Cities) Desert LeatherCraft Group (DLG) PSLAC CURRENT SCHEDULE FOR 2014

Tri-Cities Desert LeatherCraft Group Member's meetings are on the 3rd Saturday of each month unless specified below:

- Informal meetings held at Spokane Tandy Leather Factory Store, 1702 North Monroe Street, Spokane, WA 99205 (Call (509) 328-9939 for directions).

Eastern Washington (Spokane) PSLAC East PSLAC CURRENT SCHEDULE FOR 2014

PSLAC East Member's meetings are on the 1st Saturday of each Month unless specified below. 9:30 AM to 12:30 PM approx.

- Informal meetings held at Spokane Tandy Leather Factory Store, 1702 North Monroe Street, Spokane, WA 99205 Contact Ken Bush for time, date (normally the 1st Saturday) & details.

We are members of PSLAC-East (Puget Sound Leather Artisans Co-op). The East is because we are East of the Cascade Mountains. We offer classes in leathercraft at the Spokane Tandy Leather Factory store. These classes are free and open to the public. An informational newsletter is sent out prior to each class with a short description of the class, whom the instructor will be and what tools will be needed. We also schedule ad-hoc classes which are announced in the newsletter. To be on our mailing list for class notifications, please send an email (including your full name) to whiterose@aol.com requesting to be on the PSLAC-East mailing list.

All Day-Workshop Schedule for 2014:

Peter Main Leather Jewelry

Dates: Sep 13 – 14, 2014 (Sat/Sun)

Time: 8 AM to 5 PM Saturday/Sunday

This is a 2 day class and features inverted carving of a 6"x8" spiral bound notepad

Ideas for Future classes: Masks, Sporrans, Holsters – w/clip, Embossing, Celtic knot carving, Picture frames, Horse Tack

Ken Bush

White Rose Leather

11923 E. Fairview Ave.

Spokane Valley, WA 99206, 509.294.1883

Did You Know.....?

A Word to Our Readers

Please send your tips for "Did You Know ...?". What we'd like are short items on tricks you have discovered while working with leather which might be helpful to your fellow artisans. It could be a type of material or a technique or some other item that you have found useful in your leatherwork and you would be willing to share with others. So if you don't have an article (which we would also gladly accept!) but you may have a tip or trick that you have found works please drop us a line at dblyman@yahoo.com. Please include your name and email address so we can let others know who you are. Thank you. David Lyman, Editor

PSLAC Members Only Advertisements

Any PSLAC Member can advertise leather related products or services subject to approval. Just send your text, pictures and/or logo to webmaster@pslac.org

Sea Leather Wear Genuine Fish Leather Skins



For the custom manufacturing of shoes, handbags, and all sorts of apparel and accessories

Offering a 10% discount to the PSLAC members



<http://www.sealeatherwear.com>

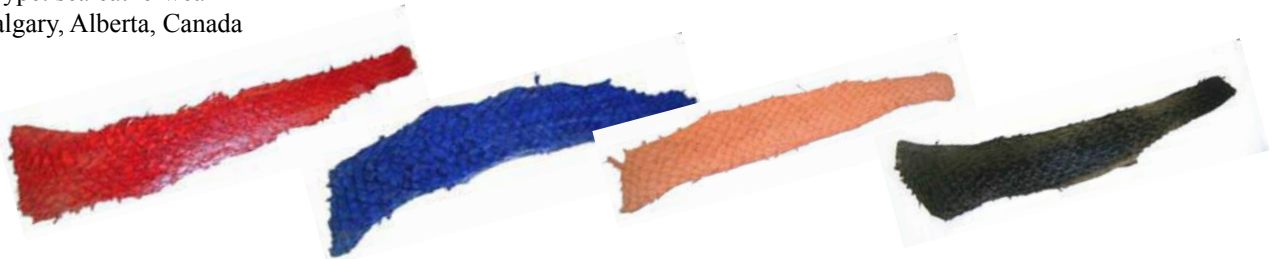
Stanley Major

Customerservice@sealeatherwear.com

Skype: sealeatherwear

Calgary, Alberta, Canada

403-689-4701



Leather Accents Custom Stitching Horses & Clams

John Wickstrom—Maker

Beautiful handcrafted wood Call
for information 360-456-1688



Leather Big Book¹ Covers www.leatherbigbookcovers.com by Bob Stelmack, Desert Leathercraft LLC

Let your imagination run wild
and have a **Custom Leather Big
Book¹ Cover** made for you. The
covers will be "one-of-kind"
and are quite striking.

¹The Big Book is a registered trademark
of Alcoholics Anonymous World
Services, Inc



www.leatherbigbookcovers.com

PSLAC Members Only Advertisement Page

Any PSLAC Member can advertise leather related products or services, subject to approval. Just send your text, picture and/or logo to webmaster@pslac.org

MARQUIS UNIQUE LEATHER ARTISTRY, LLC



I make almost anything that can be made from leather and can be sewn by hand. A lot of my works are 'bespoke items', meaning, one off, individual custom requests, ranging anywhere from books and folders to rifle scabbards, holsters and golf bags, fully carved and stamped, and any and all articles in between, which also includes moulded bowls and pictures.

Phone: (206)-523-6295
E-mail: marquispg@aol.com

www.marquisuniqueleather.com



GEER'S CUSTOM LEATHER
307-674-9226

Chan J. Geer
41 W. 7th Street
Sheridan, WY 82801

Custom Maker Stamps

Grey Ghost Graphics

By Jeff Mosby

Custom maker stamps, laser cut acrylic templates
and custom tapoffs for the leather craft field.
Custom cut from your artwork at reasonable rates!

P.O. Box 30268, Myrtle Beach, SC 29588
(866) 205-9810 or (843) 903-4788

www.greyghostgraphics.com



Black Horse Leatherworks & Saddlery specializes in high quality & unique custom western tack and apparel. We make some English items such as Schooling chaps & Stall items. We make all our leather items one at a time, by hand per our clients specifications.

C.E. Gessell, Owner

Our Motto: If you can imagine it... we can create it!

Fantastic Leather Burnisher

- ▶ New and Improved
- ▶ Faster than ever
- ▶ Cuts burnishing time by 90%
- ▶ Improves quality and appearance
- ▶ Consistent finish in a single pass
- ▶ New products available



For more information
call 509-200-9353

View our eBay Store:

<http://stores.ebay.com/scentofleather>

Visa & Mastercard orders accepted by phone

New Edge Finishing System Available



Norm Lynds, Toolmaker

Mallets, Modelers, embossing tools, lifters and others on request

Phone: (425) 357-1001

E-mail: sagerat2003@yahoo.com

Leather Company Advertisement Page

Support our sponsors and take advantage of the PSLAC Membership Discounts...

Tandy Leather Factory

The Leather Factory #21 PORTLAND
Toll Free: 888-277-3360
13221 NE Whitaker Way Portland, OR 97230

Tandy Leather #126 SEATTLE
Toll Free: 866-220-9698
14713 Aurora Ave N Seattle, WA 98133

The Leather Factory #09 SPOKANE
Toll Free: 800-822-8437
28 W Boone Ave Spokane, WA 99201

Tandy Leather #124 TACOMA
Toll Free: 888-222-0510
13819-C Pacific Ave South Tacoma, WA 98444

Outside Washington (206) 328-0855
1-800-343-9949 Fax: 328-0859

MACPHERSON

Leather Company

Leather, Shoe Finding and Saddlery

Offering a 30-40% off retail discount to the PSLAC members

519 - 12th Avenue S.
Seattle, Washington 98144

www.macphersonleather.com



Toll Free:
(800) 541-3264
Bee Natural
Leathercare

*The ultimate inleather care
products*

P.O. Box 820803, Vancouver, WA, 98682-0018
(360) 891-7178 , FAX: (360) 891-7166

E-mail: bnatura@pacifier.com

BRETTUNS VILLAGE LEATHER

Selling odd lots, miscellaneous overstocks, bargain leathers
and leathercraft

accessories, all from Maine, only online

Sides, Full Hides, Buckles, Key Rings, Laces,
Thread, Tools, Rivets, Scrap Pieces, Elk & Buffalo
Scrap

Always Free Shipping in the 48 States

www.brettunsvillage.com

GLOBAL LEATHERS



Web site: www.globalleathers.com

Telephone : 212-244-5190

Fax : 212-594-7515

E-mail: globalleathers@usa.net

Paul Crystal

Offering a discount to the PSLAC members

Leather, Suede, Skins, Inc.

261 West 35th Street

11th Floor, New York, NY 10001

Tel: (212) 967-6616

Fax: (212) 564-5759

www.leathersuedeskins.com

Email: leather.suede.skis@att.net



Offering a 10% discount to the PSLAC members

Steve Derricott



Twister D Products

301 E. Bower St.

Meridian, Idaho 83742

(208) 884-3766 - Fax (208) 884-3767

A Division of Gfeller Casemakers, Inc.

www.lacemaster.com

Offering a 10% discount to the PSLAC members



Dusty Johnson

PLEASANT VALLEY SADDLE SHOP

1220 S. County Rd. 21

Loveland, CO 80537

Phone: (970) 669-1588

Fax: (970) 669-1589

E-Mail: dusty@pvsaddleshop.com

URL: <http://www.pvsaddleshop.com>

Offering a 10% discount to the PSLAC members

RawHide Gazette

Editor/Publisher : David Lyman

Co-Founders: Bill Churchill & General Seymour

Treasurer: George Marquis

Secretary: Paula Marquis

Directors: Ken Erickson, Len Madison, Roger Kaiser, Paula Marquis & Norm Lynds

The **RawHide Gazette** is published monthly (12 times a year).
Address for information and correspondence:

PSLAC, c/o George Marquis, PO Box 25816, Seattle, WA 98165, USA

E-Mail: Billing@pslac.org

PSLAC Membership:

“a” - Internet access to **RawHide Gazette** including Member only area & meeting attendance \$20/year. (1 Person)

“b” - US Postal Mail copy of **RawHide Gazette** including new Member only articles & meeting attendance \$30/year. (1 Person)

“j” — Junior (16 and under) Internet access to **RawHide Gazette** including Member only area and meeting attendance \$10 per year.

All submissions are subject to editing for clarity and length.

All articles submitted must be accompanied by name, address and permission of writer

Advertising Rates

The **RawHide Gazette** offers advertising space to interested parties.

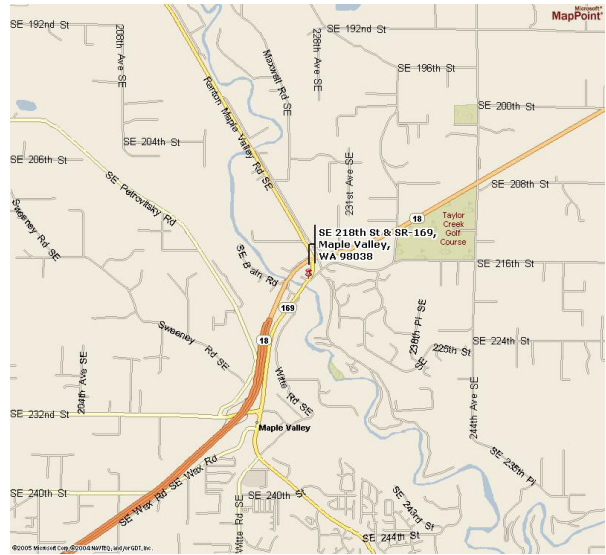
Ad spaces are as follows:

1/4 Page or Business Card.....	\$60 USD
1/2 Page.....	\$110 USD
1 Full Page.....	\$200 USD

These rates cover a six month time period. PSLAC members are entitled to a 25% discount. Leather companies supporting PSLAC are given free Business Card size advertisement, additional space at regular rates.

The Puget Sound Leather Artisans Co-Op can be found at:

<http://www.pslac.org>



Directions to Cedar Grange #534:

From I-405 take the SR169 exit and proceed toward Maple Valley on the Maple Valley Highway. In about 10 Miles you will reach the SE 216th/SE 218th Street intersection. Turn Right onto SE 218th (the down-sloping hill on the left next to the Maple Valley Market parking lot) towards the big white/gray building next to the bridge (the Cedar Grange). The parking lot is on the first left.

From Highway 18 take the SE 231st, Junction 169, Maple Valley exit. Proceed to the Highway 169 (Maple Valley Highway) junction. Turn North (toward Renton) on Highway 169 and go about ¾ mile until you reach the SE 216th/SE 218th Street intersection. Turn left onto SE 218th (the down-sloping hill on the left next to the Maple Valley Market parking lot) towards the big white/gray building next to the bridge (the Cedar Grange). The parking lot is on the first left.

From Issaquah take Front Street toward Hobart and Highway 18. In about 10 miles get on Highway 18 West heading toward Maple Valley and Auburn. Follow the Highway 18 instructions.

PSLAC
c/o George Marquis
PO Box 25816
Seattle, WA 98165
USA