

# Raw Hide Gazette

"Without question, the Raw Hide Gazette is by far the best and most informative and comprehensive Guild publications of all of them! You are to be commended for your very fine and professional efforts. Keep up the good work. With admiration"  
/signed/  
Al & Ann Stohlman, December 1997

Copyright © 2013 by PSLAC, All Rights Reserved

Puget Sound Leather Artisans Co-Op

May 2015

## Making a Moulded Bowl

### Hide Highlights

#### Page

- 4.....Ken's Knothole
- 6.....Workshop Report
- 7.....Western Washington PSLAC Schedules
- 8.....Eastern Washington PSLAC Schedules
- 8.....Did You Know.....?
- 9.....Advertisements
- 12...Map & Directions

A shallow bowl or a plate can be fashioned from leather using a crystal bowl or plate (see photo one) and an



Crystal bowls and antler hammer.

antler tip hammer (photo two). Since the pattern of the bowl or plate is on the backside or underside, that is where we will place our wet leather with the grain side on the pattern with the flesh side up. From there we will use the antler tip hammer to pound the wet leather into the pattern.

This project demands a light weight hammer with a blunt rounded tip. An elk antler is perfect for the job, but is not required. A wood hammer head rounded in the shape of an elk antler tip works just fine. Norm Lynds made my hammer, and if someone in the group has an elk antler to donate, I suspect we could get Norm to make more for us for a modest fee.

As for the crystal plate or bowl, the easiest thing is to shop at thrift stores for a suitable piece for your project.

For your first attempt, I would recommend a flat or only slightly rounded piece to work with. The more rounded your piece is the harder it is to mold your leather to fit. You can also use a piece of nice family crystal with no fear of breaking it. With the light hammer and leather over the glass, you will not need to worry about damaging or breaking your crystal.

The thickness of the leather you use is a matter of personal preference. Paula Marquis, our resident leather guru, prefers to use 7 to 8 oz. pieces. This makes for a sturdier finished product, but, depending on the depth and detail in the



Antler hammer.

crystal, may be more difficult to complete. I like to use 4 to 5 oz. leather because it is easier to pound into the indentations in the crystal and get the detail I want. However, I do risk ending up with a flimsy finished product.

Finally, you will need some clamps. I use the kind where you squeeze the handles to open the jaws and release the

*Continued on next page*

**Next Meeting on  
Sunday May 3rd at  
1:00 PM**

*Meet at The Cedar Grange Hall  
No. 534 at Maple Valley  
(See last page for map  
& directions)*

# Making a Moulded Bowl

handles to grip the piece. You can use any kind of clamp you



want as long as you can clamp in the desired place and not bend the leather on the edges of your work.

Now we are ready to start. First, cut out two pieces of leather to fit your crystal. To do this, measure the diameter of your crystal making sure that you follow the contours of the piece to get the true distance. Then cut your pieces two inches bigger so you will have an inch to spare all the way around. Then, thoroughly wet your first piece of leather. Submerge it underwater until no more air bubbles come out. Then lay your crystal down bottom side up and place the grain side of your leather facing the bottom of the crystal. Be careful to center the leather over



your crystal so you have a margin all the way around.

Once you have

centered your leather over the crystal, you need to clamp it in place. If your crystal is contoured (like a shallow bowl or dish) you should start by placing two or three clamps on the flat center part of your piece, leaving the exact middle uncovered. This is where we will start our pounding. For the whole piece, we will be pounding in a circular pattern working from the center out to the edge. Do not pound from the center out to the edge on just one part of your piece because that might leave you with a bowed patch of leather to deal with down the road.

We lock our pattern in place by pounding with light but firm taps with our hammer in the center of the piece working our way around the clamps out to the edge of the flat base of our piece. With each pound, you should see a visible dent in your leather. If you don't see a good dent, you aren't pounding hard enough. After you have pounded all of the flat base of your piece,

move the clamps to the pounded areas and fill in the unpounded areas working from the center out. Then, move the clamps back to their original spots and repeat the whole two-step process.

Now, we are ready to tackle the curved part of your piece. The most important principle to be aware of is that once you have pounded the leather into the curve, you must keep it there. Clamp as soon as possible. If the

leather pulls away from the bowl you run the risk of marring the impressions when you press or pound it back into place.



Continue to pound and clamp in a circular pattern until you have reached the edge. Be sure to pound thoroughly around the lip so you will have a well-defined edge. When you are finished, leave the leather clamped to the bowl until it is completely dry.

When removing the clamps from the piece, be sure to keep the connection



between the leather and the bowl. We will be using the leather covered bowl as a base when we add the outer layer of leather to complete our project. Use one clamp to keep your pounded, dried leather secure to the bowl while you spread a generous amount of Leather Weld on the flesh side of the leather. Then, after moistening the grain side of your second piece of leather, place the flesh side against the other glue covered flesh side. Just as with your first piece of leather, you will start from the middle and pound in a circular

# Making a Moulded Bowl

---

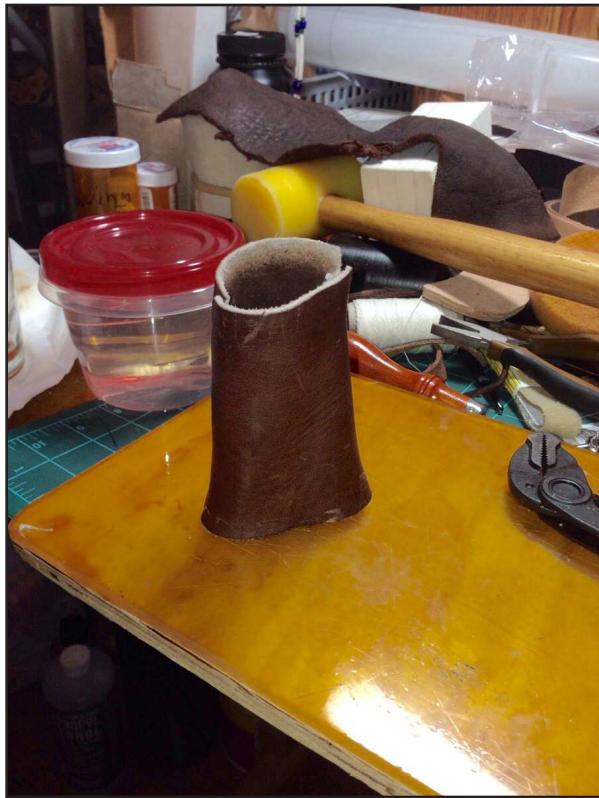
pattern out to the edge. Even when you have finished, leave the bowl in the leather. When the leather is completely dry, use the lip of the bowl as a guide to cut off the excess leather. Keep your knife on the same angle all the way around the lip for a consistent edge. After burnishing your edge, dye, stain, or color your bowl as you see fit and display it with pride.

Len Madison



Ken's Knothole May 2015

Well, another cascade Mountain Men Gun show done, Paula had an article on it in last months Gazette, but I wanted



Round ball bag body, right side out.

to get a few more pictures in for it. I had a great time, didn't sell much of my leather work, but did finally sell my brother's black powder rifle (we've been working on that for the last 4-5 years).

I've been working on a Members Only article on building a round ball bag, to hold the lead balls for black powder rifles. We'll have that in an upcoming Gazette, but I thought I'd put a few pics in for this article. This is a bag that I was making for this gun show, it's with oil tanned leather about 2-3 ounce. This bag is designed to be able to stand upright on the shooting bench. In the past I've sewn the body inside out and then turned it right side, so the stitching is on the inside. I'm beginning to find that my thumbs and fingers are just not able to twist and turn the leather like they

used to, so I sewed two pull tabs at the bottom, but even with those and a pair of pliers I wasn't able to get this bag turned. So I cut the threads on one side and sewed it with the seam on the inside, a rather laborious process.

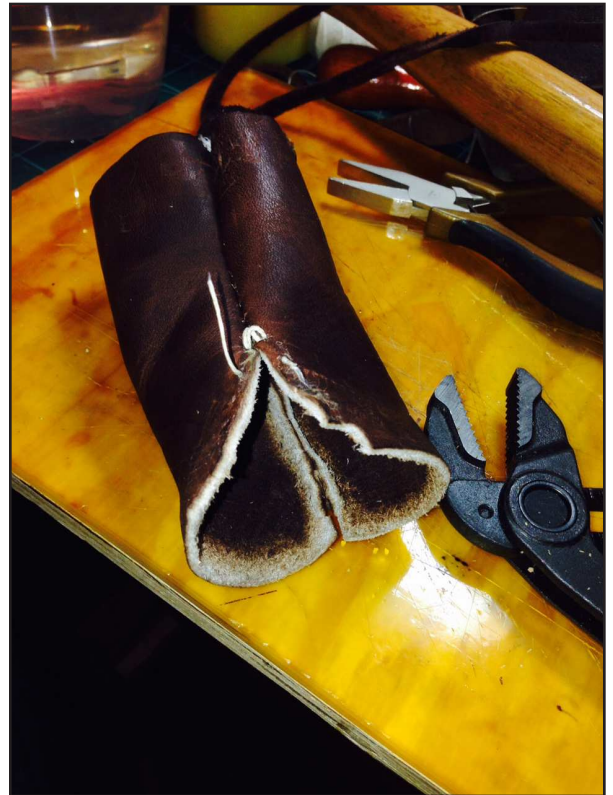
The final picture is punching the holes to sew on one of the leather springs, on the top of the bag. I'm working on an alternate design for sewing this type of bag in the future. I'll have a few pictures of variations of the round ball bag in next month's Gazette. See you all at the May meeting, remember it's the first Sunday in May, as a second Sunday is Mother's Day.



Bag inside out.



Starting to turn bag right side out.



Changed sewing method.



Sewing on leather spring.

# Workshop Report

---

WORKSHOP REPORT - MAY  
2015

Len Madison  
Workshop Co-Ordinator

The April workshop dyeing the background of the Peter Main Journal went very well and everybody got excellent results.

In the May meeting workshop we will be dyeing the flowers on the front panel. That will take the full afternoon, so would suggest that everybody be there promptly at 1.00pm to start.

Paula will bring the necessary dyes again like last month. It would probably be a good idea if John could bring some pieces of that plastic for each person to cover their work area in case of spills.

If each person can bring a No. 5 round pointed brush. Peter uses a brush for each color and keeps that brush for that particular color. A round pallet with 8 small wells would be ideal for the job, but, your favorite pallet will do the job nicely.

Bring your finished Old Style Purse to the meeting for show and tell.

The June meeting will have no workshop, but, a day of fun and getting together for socializing, BBQ, garage sale, etc., and of course lots of good eating. The Club will supply the usual BBQ stuff if the rest of us can bring a dish to share.

Also, the 3rd weekend in June there will be a Chan Geer workshop in Spokane. Chan will be doing a 2day workshop on make a photo frame and a 1day workshop on making tap-offs. Contact Ken Bush for dates, fees, materials, tools, etc.

See you all at the meeting.



## Western Washington (Seattle/Tacoma/Everett) PSLAC CURRENT SCHEDULE FOR 2015

**General Member's meetings** are on the 2nd Sunday of each Month unless specified below. 1:00 PM to 4:00 PM approx.

• Meetings held at Cedar Grange Hall No. 534 at Maple Valley General meetings start at 1:00 PM followed by the mini-demos

### Breakfast informal get-together locations:

**North Breakfast** >>> Last Friday of the month at 10:00 AM. Lake Forest Park Town Centre. 17917 Bothell Everett Hwy, Bothell, WA 98012 Bothell Way N, bordered by 170th N. & Ballinger Way N. Meet in the Third Place Books eating area

**South Breakfast** >>> 3rd Saturday of the month at 8:30 AM. Homestead. 7837 S Tacoma Way, Tacoma, WA 98409 (253) 476-9000

All Day-Workshop Schedule for 2015:

- |                  |   |
|------------------|---|
| <b>May 3</b>     | 1:00—4:00 PM Cedar Grange General meeting - Journal folder coloring       |
| <b>May 23-24</b> | Akiko Okada leather class in Spokane                                      |
| <b>Jun 14</b>    | 1:00—4:00 PM Cedar Grange General meeting - Garage sale and BBQ           |
| <b>Jun 19-21</b> | Chan Geer workshop in Spokane - picture frame (2 days), tapp-offs (1 day) |
| <b>Jul 12</b>    | 1:00—4:00 PM Cedar Grange General meeting.                                |
| <b>Aug 9</b>     | 1:00—4:00 PM Cedar Grange General meeting.                                |
| <b>Sep 5-6?</b>  | Peter Main will be in Spokane   |
| <b>Sep 13</b>    | 1:00—4:00 PM Cedar Grange General meeting.                                |
| <b>Oct 11</b>    | 1:00—4:00 PM Cedar Grange General meeting.                                |
| <b>Nov 8</b>     | 1:00—4:00 PM Cedar Grange General meeting.                                |
| <b>Dec 13</b>    | 1:00—4:00 PM Cedar Grange General meeting.                                |

## Eastern Washington (Tri –Cities) Desert LeatherCraft Group (DLG) PSLAC CURRENT SCHEDULE FOR 2015

**Tri-Cities Desert LeatherCraft Group Member's meetings** are on the 3rd Saturday of each month unless specified below:

- Informal meetings held at Spokane Tandy Leather Factory Store, 1702 North Monroe Street, Spokane, WA 99205 (Call (509) 328-9939 for directions).

## Eastern Washington (Spokane) PSLAC East PSLAC CURRENT SCHEDULE FOR 2015

**PSLAC East Member's meetings** are on the 1st Saturday of each Month unless specified below. 9:30 AM to 12:30 PM approx.

- Informal meetings held at Spokane Tandy Leather Factory Store, 1702 North Monroe Street, Spokane, WA 99205 Contact Ken Bush for time, date (normally the 1st Saturday) & details.

We are members of PSLAC-East (Puget Sound Leather Artisans Co-op). The East is because we are East of the Cascade Mountains. We offer classes in leathercraft at the Spokane Tandy Leather Factory store. These classes are free and open to the public. An informational newsletter is sent out prior to each class with a short description of the class, whom the instructor will be and what tools will be needed. We also schedule ad-hoc classes which are announced in the newsletter. To be on our mailing list for class notifications, please send an email (including your full name) to whiterose@aol.com requesting to be on the PSLAC-East mailing list.

### All Day-Workshop Schedule for 2015:

**May 23-24** Akiko Okada leather class in Spokane

**Jun 19-21** Chan Geer workshop in Spokane - picture frame (2 days), tap-offs (1 day)

**Sep 5-6?** Peter Main will be in Spokane

Ideas for Future classes: Masks, Sporrans, Holsters – w/clip, Embossing, Celtic knot carving, Picture frames, Horse Tack

Ken Bush

White Rose Leather

11923 E. Fairview Ave.

Spokane Valley, WA 99206, 509.294.1883

## Did You Know.....?

### A Word to Our Readers

Please send your tips for "Did You Know ...?". What we'd like are short items on tricks you have discovered while working with leather which might be helpful to your fellow artisans. It could be a type of material or a technique or some other item that you have found useful in your leatherwork and you would be willing to share with others. So if you don't have an article (which we would also gladly accept!) but you may have a tip or trick that you have found works please drop us a line at dblyman@yahoo.com. Please include your name and email address so we can let others know who you are. Thank you. David Lyman, Editor



# PSLAC Members Only Advertisements

Any PSLAC Member can advertise leather related products or services subject to approval. Just send your text, pictures and/or logo to [webmaster@pslac.org](mailto:webmaster@pslac.org)

## Sea Leather Wear Genuine Fish Leather Skins



For the custom manufacturing of shoes, handbags, and all sorts of apparel and accessories

Offering a 10% discount to the PSLAC members



<http://www.sealeatherwear.com>

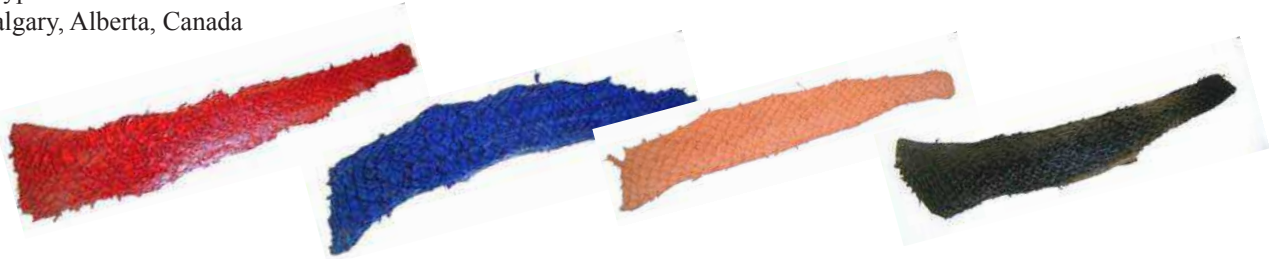
Stanley Major

Customerservice@sealeatherwear.com

Skype: sealeatherwear

Calgary, Alberta, Canada

403-689-4701



## Leather Accents Custom Stitching Horses & Clams

John Wickstrom—Maker

Beautiful handcrafted wood Call  
for information 360-456-1688



## Leather Big Book<sup>1</sup> Covers [www.leatherbigbookcovers.com](http://www.leatherbigbookcovers.com) by Bob Stelmack, Desert Leathercraft LLC

Let your imagination run wild  
and have a **Custom Leather Big  
Book<sup>1</sup> Cover** made for you. The  
covers will be "one-of-kind"  
and are quite striking.

<sup>1</sup>The Big Book is a registered trademark  
of Alcoholics Anonymous World  
Services, Inc



[www.leatherbigbookcovers.com](http://www.leatherbigbookcovers.com)

# PSLAC Members Only Advertisement Page

Any PSLAC Member can advertise leather related products or services, subject to approval. Just send your text, picture and/or logo to [webmaster@pslac.org](mailto:webmaster@pslac.org)

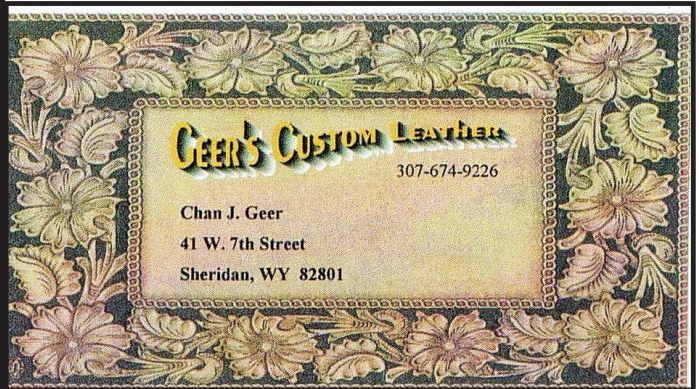
## MARQUIS UNIQUE LEATHER ARTISTRY, LLC



I make almost anything that can be made from leather and can be sewn by hand. A lot of my works are 'bespoke items', meaning, one off, individual custom requests, ranging anywhere from books and folders to rifle scabbards, holsters and golf bags, fully carved and stamped, and any and all articles in between, which also includes moulded bowls and pictures.

Phone: (206)-523-6295  
E-mail: [marquispg@aol.com](mailto:marquispg@aol.com)

[www.marquisuniqueleather.com](http://www.marquisuniqueleather.com)



**GEER'S CUSTOM LEATHER**  
307-674-9226

Chan J. Geer  
41 W. 7th Street  
Sheridan, WY 82801

## Custom Maker Stamps

Grey Ghost Graphics

By Jeff Mosby

Custom maker stamps, laser cut acrylic templates  
and custom tapoffs for the leather craft field.  
Custom cut from your artwork at reasonable rates!

P.O. Box 30268, Myrtle Beach, SC 29588  
(866) 205-9810 or (843) 903-4788

[www.greyghostgraphics.com](http://www.greyghostgraphics.com)



Black Horse Leatherworks & Saddlery specializes in high quality & unique custom western tack and apparel. We make some English items such as Schooling chaps & Stall items. We make all our leather items one at a time, by hand per our clients specifications.

**C.E. Gessell, Owner**

*Our Motto: If you can imagine it... we can create it!*

## Fantastic Leather Burnisher

- ▶ New and Improved
- ▶ Faster than ever
- ▶ Cuts burnishing time by 90%
- ▶ Improves quality and appearance
- ▶ Consistent finish in a single pass
- ▶ New products available



For more information  
call 509-200-9353  
View our eBay Store:

<http://stores.ebay.com/scentofleather>

Visa & Mastercard orders accepted by phone

**New Edge Finishing System Available**



## Norm Lynds, Toolmaker

Mallets, Modelers, embossing tools, lifters and others on request

Phone: (425) 357-1001

E-mail: [sagerat2003@yahoo.com](mailto:sagerat2003@yahoo.com)

# Leather Company Advertisement Page

Support our sponsors and take advantage of the PSLAC Membership Discounts...

## Tandy Leather Factory

The Leather Factory #21 PORTLAND  
Toll Free: 888-277-3360  
13221 NE Whitaker Way Portland, OR 97230

Tandy Leather #126 SEATTLE  
Toll Free: 866-220-9698  
14713 Aurora Ave N Seattle, WA 98133

The Leather Factory #09 SPOKANE  
Toll Free: 800-822-8437  
28 W Boone Ave Spokane, WA 99201

Tandy Leather #124 TACOMA  
Toll Free: 888-222-0510  
13819-C Pacific Ave South Tacoma, WA 98444

Outside Washington (206) 328-0855  
1-800-343-9949 Fax: 328-0859

### MACPHERSON

#### Leather Company

Leather, Shoe Finding and Saddlery

*Offering a 30-40% off retail discount to the PSLAC members*

519 - 12th Avenue S.  
Seattle, Washington 98144

[www.macphersonleather.com](http://www.macphersonleather.com)



Toll Free:  
(800) 541-3264  
Bee Natural  
Leathercare

*The ultimate inleather care  
products*

P.O. Box 820803, Vancouver, WA, 98682-0018  
(360) 891-7178 , FAX: (360) 891-7166

E-mail: [bnatura@pacifier.com](mailto:bnatura@pacifier.com)

### BRETTUNS VILLAGE LEATHER

Selling odd lots, miscellaneous overstocks, bargain leathers  
and leathercraft

accessories, all from Maine, only online

Sides, Full Hides, Buckles, Key Rings, Laces,  
Thread, Tools, Rivets, Scrap Pieces, Elk & Buffalo  
Scrap

Always Free Shipping in the 48 States

[www.brettunsvillage.com](http://www.brettunsvillage.com)

## GLOBAL LEATHERS



Web site: [www.globalleathers.com](http://www.globalleathers.com)

Telephone : 212-244-5190

Fax : 212-594-7515

E-mail: [globalleathers@usa.net](mailto:globalleathers@usa.net)

Paul Crystal

*Offering a discount to the PSLAC members*

Address update:

Brettuns Village, Inc.  
557 Lincoln St  
Lewiston, ME 04240  
TEL: (207)782-7863  
FAX: (207)782-7448

## Steve Derricott



Twister D Products

301 E. Bower St.

Meridian, Idaho 83742

(208) 884-3766 - Fax (208) 884-3767

A Division of Gfeller Casemakers, Inc.

[www.lacemaster.com](http://www.lacemaster.com)

*Offering a 10% discount to the PSLAC members*

## Leather, Suede, Skins, Inc.

261 West 35th Street

11th Floor, New York, NY 10001

Tel: (212) 967-6616

Fax: (212) 564-5759

[www.leathersuedeskins.com](http://www.leathersuedeskins.com)

Email: [leather.suede.skis@att.net](mailto:leather.suede.skis@att.net)



*Offering a 10% discount to the PSLAC members*



## Dusty Johnson

PLEASANT VALLEY SADDLE SHOP

1220 S. County Rd. 21

Loveland, CO 80537

Phone: (970) 669-1588

Fax: (970) 669-1589

E-Mail: [dusty@pvsaddleshop.com](mailto:dusty@pvsaddleshop.com)

URL: <http://www.pvsaddleshop.com>

*Offering a 10% discount to the PSLAC members*

# RawHide Gazette

**Editor/Publisher :** David Lyman

**Co-Founders:** Bill Churchill & General Seymour

**Treasurer:** George Marquis

**Secretary:** Paula Marquis

**Directors:** Ken Erickson, Len Madison, Roger Kaiser, Paula Marquis & Norm Lynds

The **RawHide Gazette** is published monthly (12 times a year).  
Address for information and correspondence:

PSLAC, c/o George Marquis, PO Box 25816, Seattle, WA 98165, USA

E-Mail: [Billing@pslac.org](mailto:Billing@pslac.org)

PSLAC Membership:

“a” - Internet access to **RawHide Gazette** including Member only area & meeting attendance \$20/year. (1 Person)

“b” - US Postal Mail copy of **RawHide Gazette** including new Member only articles & meeting attendance \$30/year. (1 Person)

“j” — Junior (16 and under) Internet access to **RawHide Gazette** including Member only area and meeting attendance \$10 per year.

All submissions are subject to editing for clarity and length.

All articles submitted must be accompanied by name, address and permission of writer

### Advertising Rates

The **RawHide Gazette** offers advertising space to interested parties.

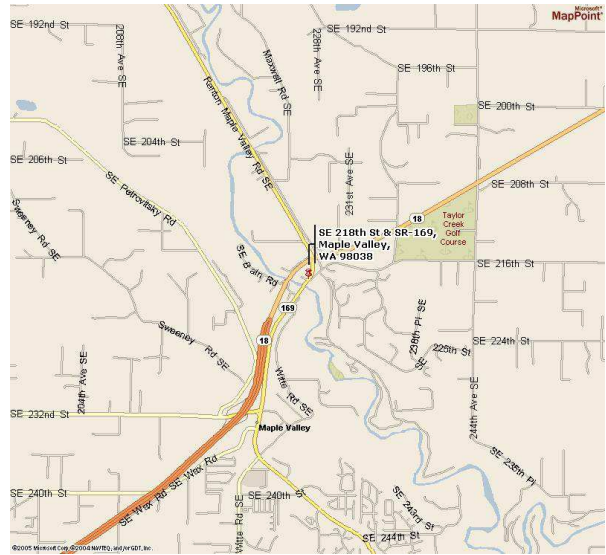
Ad spaces are as follows:

1/4 Page or Business Card.....	\$60 USD
1/2 Page.....	\$110 USD
1 Full Page.....	\$200 USD

These rates cover a six month time period. PSLAC members are entitled to a 25% discount. Leather companies supporting PSLAC are given free Business Card size advertisement, additional space at regular rates.

The Puget Sound Leather Artisans Co-Op can be found at:

<http://www.pslac.org>



### Directions to Cedar Grange #534:

**From I-405** take the SR169 exit and proceed toward Maple Valley on the Maple Valley Highway. In about 10 Miles you will reach the SE 216th/SE 218th Street intersection. Turn Right onto SE 218th (the down-sloping hill on the left next to the Maple Valley Market parking lot) towards the big white/gray building next to the bridge (the Cedar Grange). The parking lot is on the first left.

**From Highway 18** take the SE 231st, Junction 169, Maple Valley exit. Proceed to the Highway 169 (Maple Valley Highway) junction. Turn North (toward Renton) on Highway 169 and go about ¾ mile until you reach the SE 216th/SE 218th Street intersection. Turn left onto SE 218th (the down-sloping hill on the left next to the Maple Valley Market parking lot) towards the big white/gray building next to the bridge (the Cedar Grange). The parking lot is on the first left.

**From Issaquah** take Front Street toward Hobart and Highway 18. In about 10 miles get on Highway 18 West heading toward Maple Valley and Auburn. Follow the Highway 18 instructions.

**PSLAC**  
**c/o George Marquis**  
**PO Box 25816**  
**Seattle, WA 98165**  
**USA**