

Raw Hide Gazette

Copyright © 2016 by PSLAC, All Rights Reserved

"Without question, the **Raw Hide Gazette** is by far the best and most informative and comprehensive Guild publications of all of them! You are to be commended for your very fine and professional efforts. Keep up the good work. With admiration"
/signed/

Al & Ann Stohlman, December 1997

Puget Sound Leather Artisans Co-Op

June 2016

Hide Highlights

Page

- 1 Youth
- 1 Ken Griffin's Magic
- 2 Plough Gauge Strap Cutting
- 3 Celtic Cross Design
- 3 Celtic Cross Book Cover
- 4 Inland Empire Roundup
- 6 Free Standing Hair-on-Hide Display
- 6 Skip's Recent Work
- 7 Floor Tool Holder for Book Cover Construction
- 7 Lassco Cornerounder®
- 8 Quilting Rulers for Cutting Leather
- 8 Installed Suspended Edge Guide for a FERDCO 1245
- 9 How to Make Leather Book Covers without the Book
- 10 Handmade Clicker Die Circle Punch
- 10 Horseshoe Book Cover
- 11 Meeting Activities for June 2016
- 11 Meeting Times & Location

Our PSLAC MISSION is...

- To further the enjoyment of leather and to help others learn more about the real joy of leather - working as a group and sharing ideas and knowledge of leather, its uses and how to use it. To pass on this knowledge to others and then have them pass it on to the new members who come later. A fellowship with peers, young and old, expert and non-expert, anyone who has the love of leather.
- To show and demonstrate to people outside the Co-Op leather in all forms and try to help them to become interested in leather.
...to share...
- time talent, with all others in the Co-Op, especially the young.

Youth

Spent some time with **Jim Linnell**, Director of Operations for Tandy Leather Company, at the Rocky Mountain Leather Trade Show at Sheridan, WY. last month. Jim taught a class of 40 kids how to work with leather. The youngest member was 3-years old and the oldest was 13-years old. Jim talked about the importance of teaching kids a skill, other than video/phone games. Something to build self esteem and pride in creating a leather article. He has noticed lack of youth entering into leathercraft.



Jim Linnell

Just for reference, the **PSLAC Mission Statement** is printed on this page. I seemed to have forgotten it. Our founders of **PSLAC** were dedicated to interest kids in the craft of leather.

So, I have committed myself to return, this year, to the 4-H building to teach kids some leather project at the Benton County Fair. And will contact the local Boy Scouts to see if I could teach some leather classes. If anyone reads this and commits to and completes teaching some leather skills to kids, then send pictures and/or some text to:

stelmack@nwlinc.com

Bob Stelmack
Richland, WA

Ken Griffin's Magic

(excerpts from <http://blog.leathercraftlibrary.com/2016/05/02/leaders-in-leathercraft-ken-griffin/1914-1988>)

"His success in the leatherworking industry provided (**Ken**) **Griffin** the opportunity to pursue his lifelong dream of becoming a magician, also earning he and his wife global notoriety in a second vocation."

Jim Linnell said: "That during his workshops, Ken would complain about his swivel knife and say it kept shrinking. Then during the carving presentation he would use 'slight-of-



hand' and exchange the regular swivel knife for the one pictured in my hand".

That swivel knife is completely functional and the adjustable length of the shaft really works. Quite amazing.

Bob Stelmack
Richland, WA



Plough Gauge Strap Cutting

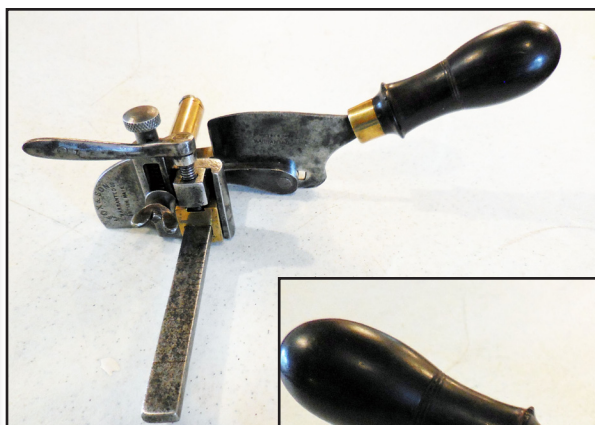
Roger sent a side of leather to the May meeting to have several strips cut for a Boy Scout project. **Paula** brought her **Dixon plough gauge** to do the job. I watched her as she did the job.

She first laid out the hide on one of the tables and smoothed down the surface. Next was to use a straight edge and draw a line along the back cut the length of the hide. This she then cut with her clicking knife. The gauge was set to the width of the strips to be cut and she was ready to start. As the hide was rather limber, to start each cut she set the gauge against the leather and used a set of pliers to hold the hide while she started the cut.

Once she could take hold of the strap she began to run the gauge by pushing it along the side while pulling back on the strap. It took less time to cut the 8 strips needed than it took to cut the initial straight line.

Unlike using the draw gauge where you are working under leather which has to be clamped to hold it, with the draw gauge you are working on top of leather which is lying on a smooth surface. The gauge is lying on the surface and the leather is drawn up into the blade, and then drops down again under the handle.

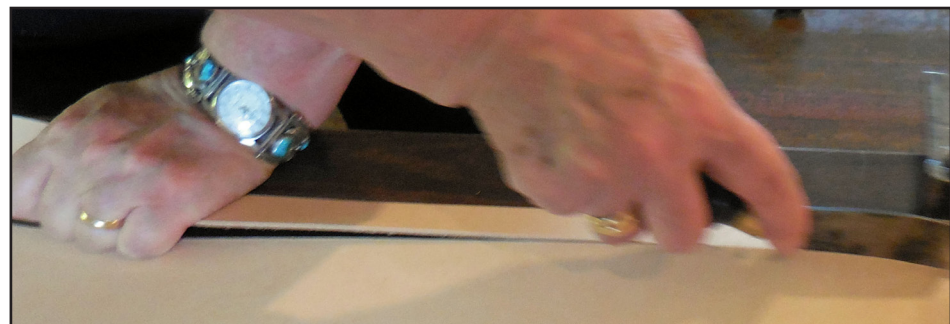
Like most everything, it takes a bit of use to become comfortable with this tool. There has to be some resistance to the forward motion of the tool. There is the cutting force



of the blade, the tension between the blade and the fence, and the movement of the leather over the foot and sizing bar. About the easiest way to move the tool forward is to stand facing the bench and push forward (left) with the right hand on the tool and pull backward (right) with the left hand holding onto the strap being cut. In this way your hands will cross your body easily, take a step to the left and repeat.



Norm Lynds



Celtic Cross Design

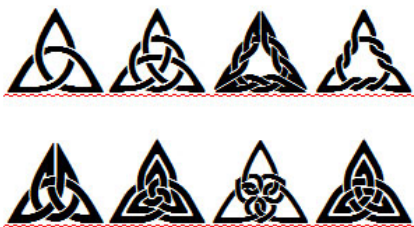
I made a dual Big Book and Twelve Steps & Twelve Traditions cover. The Celtic knot design was created with Celtic font. This font uses characters on the keyboards to create the knot. The circle/triangle was added by hand. The font is available from:

www.clanbadge.com/knots.htm

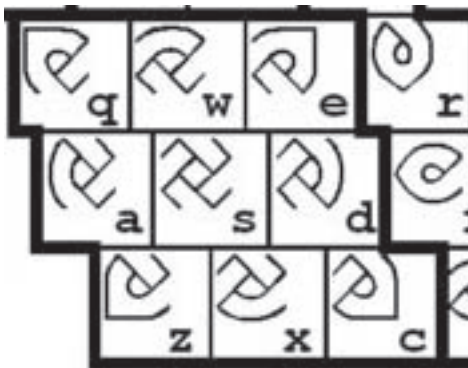
ClanBadge.com
7610 Elphick Rd.
Sebastopol CA 95472

Since you have complete control over the design in size, you can create any style of Celtic Knot. In fact, ClanBadge.com has many styles of elements to make the knot. Some are just outlined like the following. Others are filled, inverse and even 3-D.

There are even triangle shaped Celtic fonts available like these:



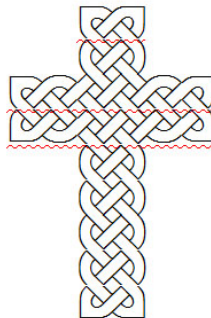
When using the Celtic Font, the letters “qe” form the top of the cross, then the letters “ad” form the next section down and so on until the cross is formed. You can see from the picture sample of the keyboard, the images that each letter makes.



So, the following text in Times New Roman would be:

qe
ad
qwsswe
zxssxc
ad
ad
ad
ad
zc

Then selecting the Times New Roman text and changing to Celtic Font would produce the following. Just be sure to set the space between paragraphs to zero so that the adjacent characters in the lines above and below are touching, like this:

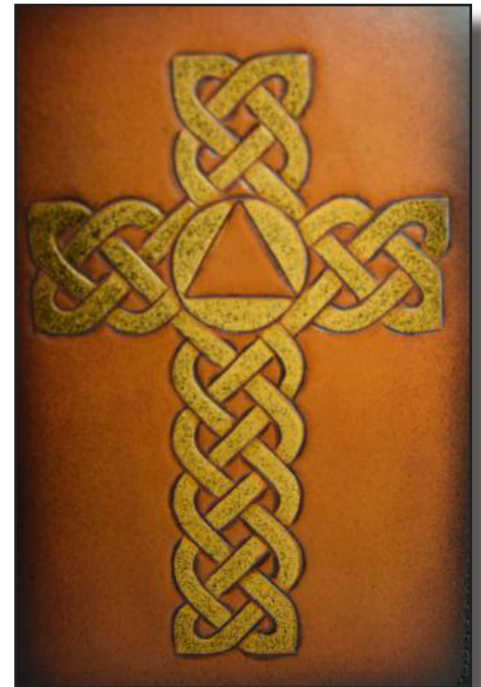


Bob Stelmack
Richland, WA

Celtic Cross Book Cover

My first attempt at air brushing the edges, because I needed to cover a small spot that didn't take the dye as well as the rest of the applique. The dark brown air brushing didn't cover completely, so I use some additional black dye. So I just grabbed a container of black and kept spraying. Suddenly, there was some chemical reaction and the over spray was attracted to the cross and only the cross. As witnessed by the

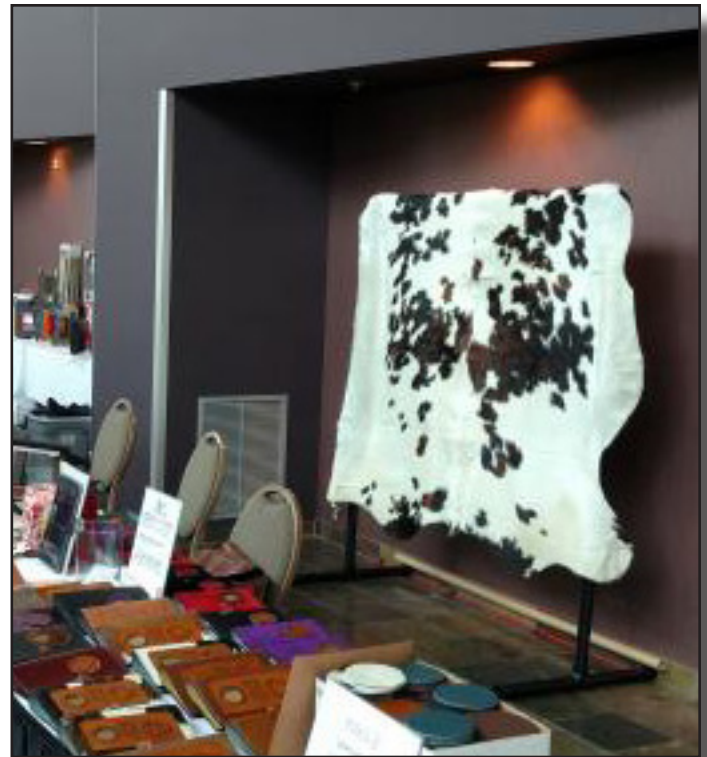
triangle without a speck of black. It gave a “stone like” texture look to the cross. I don't think I could have repeated that look ever again. Then it took me several cleaning to get the airbrush to work again.



The brown leather is buffalo with black calf lace.

Bob Stelmack
Richland, WA





Inland Empire Roundup

I was granted permission to sell my leather book covers at the annual **Inland Empire Roundup** in Kennewick, WA. This is a 3-day event that is put on by members of a recovery program. It featured many chances to meet with others and participate with:

- Recovery Speakers
- Panels on recovery
- Vendors
- Archives
- Poker Run
- Raffles
- Hospitality Room
- Social Time
- Silent Auction
- Golf Tournament

I was a vendor for **Desert Leathercraft LLC** and was selling my Leather Big Book Covers. I did this for a couple of reasons. The foremost reason was to get face-to-face selling information. Most of my sales are over the Internet and it is hard to gauge what colors or types of book covers are desired. This way I was able to watch what people looked at, what they picked up and asked them what would they like to see more of.

colors. Now when I go to Rocky Mountain Leather Trade Show in Sheridan, Wyoming I'll be on the look out for brighter colored leather.

Second reason for trying sales at a venue was to gauge the profitability, since there are several recovery roundups within a 4-5 hour driving range, even a couple just under an hour away.

Since this roundup was only 15-minutes away, there were no travel costs, so that would have to be figured into the next venture.

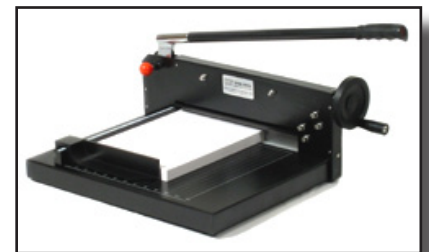
Karen and I stayed at the hotel next to the Tri-Cities Convention Center for more of a convenience, so we only needed to spend 2-nights, whereas at distant roundup I would need to spend 3-nights to allow for early morning setup. So, I would have to figure about \$300 for lodging and \$100 for meals. And most venues require you to register at a cost around \$30.

Also, there are costs to rent tables from the convention center, otherwise at other venues I would need to bring tables and

One woman gave me the best tip ever, she said: "Look at their purses." BINGO, I saw that the majority of the sales were those odd, brighter

chairs. (*Starts to limit the space in a 2008 Chev Impala.*)

Initially I prepared some informational, give-away brochures, and even a brochure offering classes to make their own leather book covers that was met with much interest. (*I'll wait until someone actually signs up to gauge the real interest.*) The black and white price list and class offering I printed at home. The color sample brochure cost about \$100 for 150 copies. Business cards I print up by the "boat load". They are on plain card stock and cut on my QCM-1200E Desktop Stack Paper Cutter.



Cutting Width: 12-1/4"
Capacity: 280 Sheets
Base Size: 14" x 19"

I can take one-half a ream of card stock and make 1,250 business cards for about \$6.00. The business card images are print using OpenOffice or LibreOffice, both are free Open Source software and Avery.com has the templates for whatever style or size of card you want. Every on-line sale I make



I include ten or more business cards to be handed out. This way, “word-of-mouth” is how I sell most of my cover. To date, I have sold or gifted about 2,000 covers. I also had pens with my website and phone number on them.

By-the-way, I have a new logo I designed and you can see it on my hat or right here:



The “B” resembles the “dual” book covers I make that hold two books in one cover.

So I haven’t lost you rambling, let’s recap:

Lodging	\$300
Meals.....	\$100
Registration.....	\$30
Table rental.....	\$60
Travel expense	\$variable

Right off the bat, I needed to sell about \$600 of merchandise just to break even. I did sell about \$800, but that does not mean \$200 profit. There are labor and material costs in those \$800 worth of book covers and the overhead costs for office supplies, Internet access and domain services along with Federal, state and local taxes. And

the cost of my time at the venue to set-up, take-down and be at the display for 8 to 10 hours during the roundup.

Bottom line is I really didn’t make money on this venture. There were 300 people in attendance over the weekend and I estimate that I would need at least 1,500 people to make a minimum wage.

I treated this at a marketing venture to gain first hand experience from live customers to help my main on-line exposure.

So, will I do it again? Yes, but only this local round up or one within an hours drive.

Bob Stelmack



**Make Your Own
Leather Big
Book® Class**



www.leatherbigbookcovers.com

Alcoholics Anonymous & Big Book are registered trademarks of Alcoholics Anonymous World Services, Inc.

Spring 2016, prices subject to change



pipe has 8-screws that are screwed completely through the pipe to make points that grab the hair-on-hide leather so that the majority of the hide will be displayed without slipping off or require any additional attachments.

It can be assembled and disassembled by one person and will fit into my car trunk with just a little sticking out.

Similar designs could be used to display belts, purses, and the like with additional horizontal pipes or even thinner plastic pipes. In fact, stretched canvas or leather could provide a surface to



Free Standing Hair-on-Hide Display

Needed a way to display a full hide to gather attention at the **Inland Empire Roundup** and used it to point out a "cow lick" on the hide to start a conversation about leather.

The basic construction is made from 1-1/2" plastic drain pipe, with various connectors glued together in four pieces that are assembled on-site. The pipe was purchased in 8-foot sections and cut with a normal handsaw into 5-foot, 6-foot and 1-foot sections. (6-foot verticals, 5-foot horizontals, and 1-foot feet) You can see the 90 degree elbows, "T" sections, connectors at the ends of the feet and the "Y" joints.

The middle spanning pipe has piece of wood permanently screwed into the spanning piece. It is screwed into the vertical pipe at the "Y" joint for stability. It can be unscrewed for disassembly.

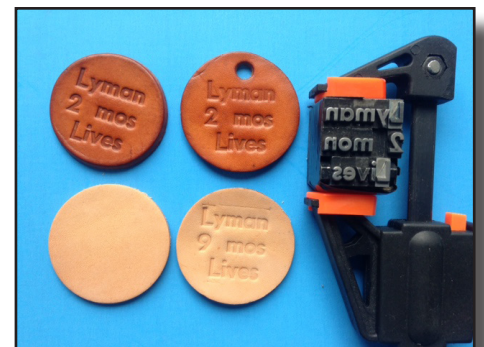
The top spanning pipe is just set into the vertical pipe where friction and weight of the hair-on-hide will hold it. The top spanning



display leather pictures or other flat items. The canvas/leather could be strung like the indian drum heads to make it relatively easy

to assemble and disassemble.

Bob Stelmack
Richland, WA



Skip's Recent Work

Skip has a bunch of new leather and leather tool "hand-me-downs". Here he is experimenting in making tags with his new book press he made last month.

Floor Tool Holder for Book Cover Construction

There are some larger items that I need many times a day, but don't want to clutter up the work surface. I have two corner cutters, several plastic quilting forms, a small granite stone, some thin plastic for punching holes, a square and couple of odds and ends.

To come up with a handy design, I started with just a mock-up on the dining room table. Laying out the wood for holding the tools. Rough cut a few items and measured them for a final cut.

I cut rabbets (a recess or groove cut into the edge of a piece wood) to attach the dividers. In later tool holders, I've used moveable dividers to cater to changes in tools or their placement.

Then glued and screwed the unit together and screwed the bottom on. On the bottom four corners I glued leather 5/6 ounce one-inch round leather disks and one in the center to keep the tool holder from scratching the floor.

Bob Stelmack
Richland, WA



Lassco Cornerounder®

The **Lassco Cornerounder** is time saver for me. It is designed to handle paper and plastic products, but works really well with vegetable tanned leather. Not so well on softer chrome tanned leathers, but enough for me to kill the sharp corner on the leather book covers I make. It accepts different sized cutting units. It comes with your choice of one cutting unit: 1/8", 1/4", 3/8", or 1/2". Special sizes are also available.



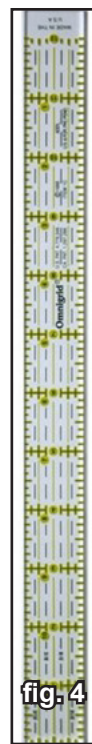
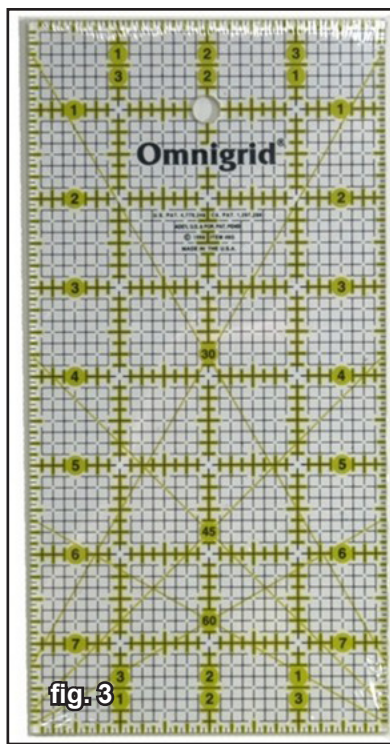
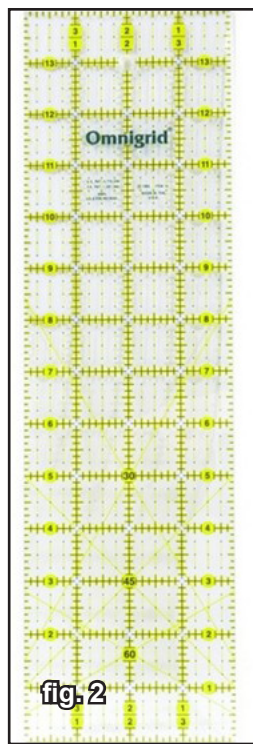
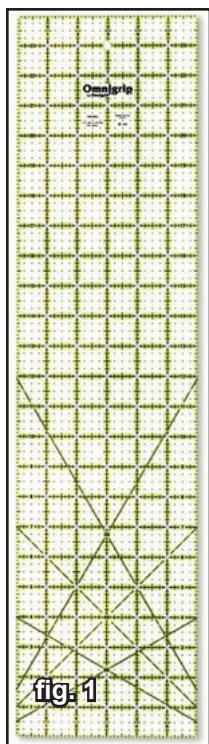
Total Price: \$142.50

Other radii available:

1/8" (\$105.00)	1/4" (\$105.00)
3/8" (\$105.00)	1/2" (\$105.00)
1/16" (\$149.00)	3/32" (\$149.00)
5/32" (\$149.00)	3/16" (\$149.00)
5/16" (\$149.00)	5/8" (\$149.00)

Since I make a lot of covers, I found changing out the cutter heads a little time consuming so I own two Lassco Cornerounders. One is fitted with a one-half inch cutter to trim the leather sewn on appliques and the other quarter-inch for trimming the corners of the chrome tanned covers and also for rounding corners on business cards.

Bob Stelmack
Richland, WA



Quilting Rulers for Cutting Leather

Since most cuts I make are straight cuts, I find that quilting rulers from JoAnn Fabrics make the cutting easier. It is easier to align the edges along other edges to get parallel cuts. I use several sizes in width: 1", 4", 5" and 6" in different lengths.

The knife most often used with these rulers is a 46mm rotary knife or the 60mm rotary knife for thicker leathers.

I prefer the holders that automatically shield the blade (fig. 5) when not in use. Don't ask me how I know this. On a side note: "blood does not come out of veg tanned leather".

The blades (fig. 6) are quite expensive and all the sharpeners I've tried never return the original blades sharpness.

If you go to eBay.com and search for:

100 - 45MM ROTARY CUTTER BLADES fits Olfa, Fiskars, Clover and more

...you will find 100 blades for \$90. That is \$0.90 a blade and in the fabric store they are around \$5-7 each.

Bob Stelmack
Richland, WA

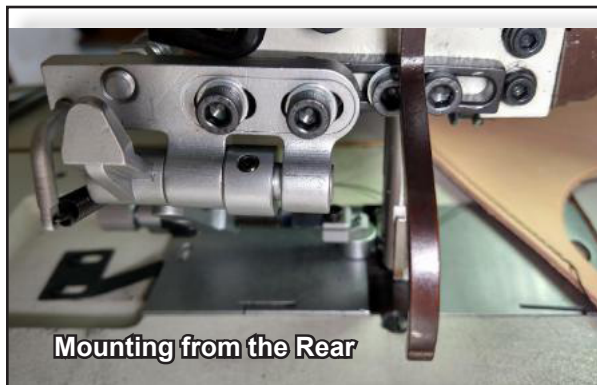
Installed Suspended Edge Guide for a FERDCO 1245

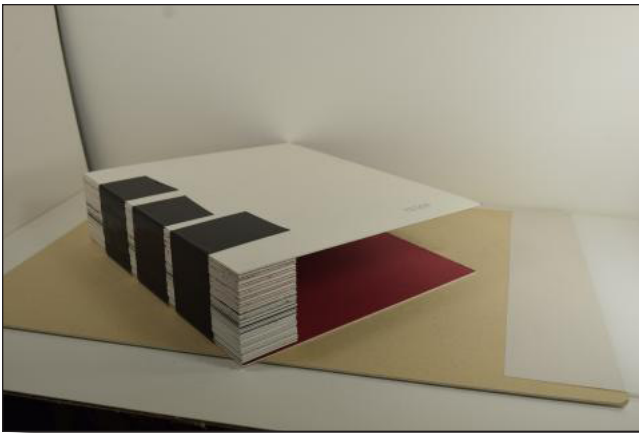
A member (UWE) on the www.leatherworker.net had a Kwok Hing KG1245 suspending edge guide with the matching KB09 adapter bracket for a Pfaff 1245. My machine is actually a FERDCO clone of a PFAFF 1245:

I received the edge guide and it worked fine, but I did need to re-tap the mounting holes on the

FERDCO 1245 with a M5X0.8 tap that seemed to match the two smaller screws included with the kit. Sometimes the machine paint clogs the holes.

Here is what it looks like:





relatively short time.

I put a dab of PVA glue on each spine piece and glue together a stack the size of the books thickness.



How to Make Leather Book Covers without the Book

My focus is making leather book covers for 12 Step Recovery books. I have at least

Then I cut a front and back to the height and width dimensions given and 2 or 3 together if the book is hard covered. The whole thing is taped on with some duct tape and ready for fitting the leather cover.

wrong dimensions or fails to tell me if the books cover is paperback or hardcover.

The other fool I can't control is me—when I measure and cut the matte boards incorrectly.



This is almost fool proof, except when the customer gives the

Bob Stelmack
Richland, WA

one book from most recovery organizations. This allows me the confidence that the cover created will fit the intended book.

Occasionally I get a request for an odd size book and the I make a prototype book out of matte board. The local craft store (Craft Warehouse) sells packages of off cuts from framing pictures for as little as \$3-5.

Since I have this QCM-1200E Desktop Stack Paper Cutter (see description in this issue) I can cut many pieces of matte board in a



Hide House
Emerald Green
Leather

Handmade Clicker Die Circle Punch

Well, Skip is at it again. He recently send these pictures and said: "I just heard my first 'click'! For just \$4.09 and a little time spent on the grinder.

"The inside bevel is already there when you purchase this. I just needed to file the threads off of the outside diameter, smooth it up with a rat-tailed file and some sandpaper.

"How much did you say that they sell these for?"



I had told Skip that the leather clicker hole punches from Texas Custom Dies were \$40.00 (for sizes less than 5-inches).

So, Skip continues to show us less expensive ways to make do with a little ingenuity and some extra manual work.

And here is a picture of the handmade book press with a handmade clicker die punching out leather circles.



Horseshoe Book Cover

Again, Skip is making book covers. He says: "Here's Book #2. I used your horseshoe and completely reworked the cover. I love the feel and appearance of this leather, even more so with the brown pockets. I added a liner, as you showed me.

"My friend owns a couple of horses and rides often, especially in the back woods. He'll love this."



Meeting Activities for June 2016

June is **Summer social and Picnic month**. We have our annual **Picnic and Garage Sale** and the presentation of the **Bill Churchill Award**.

We are looking forward to this year's presentation and it would be good to see everybody, those who regularly come to the meetings and those we haven't been for some time.

For those of you who are coming and have not let us know, could you please phone Debbie Kaiser (425) 432 1741 and let her know you are coming and how many friends you are bringing with you. Thanks, that will help with the catering. PSLAC will supply the usual, condiments, buns, meat, and if you all bring a small dish and your own drinks. Coffee will be supplied. That would be great.

For awhile now we haven't had a raffle and decided that this year we would again have a raffle, especially since my friends **Andrew** and **Katrine** have brought over three items

for the raffle. Namely, three **ruby swivel knife blades**. These blades have not been available for many years, and a properly sharpened one is a joy to use. Only need to strop them to keep them clean. We will also have many other items for the raffle.

The Garage sale of course will start at noon, giving everybody a good hour to look, browse and buy. At 1pm we will have a very short meeting, then the presentation followed by eating and socializing and hopefully some show and tell as well.

Paula Marquis

CHECKLIST

- ☒ Ready for fun
- ☒ Complain
- ☒ Good attitude
- ☒ Learn something new
- ☒ Something to share
- ☐ What to bring

Meeting Times & Location

Western Washington (Seattle/Tacoma/Everett)

General Member's meetings are on the 2nd Sunday of each Month unless specified below. 1:00 PM to 4:00 PM approximately. Meetings held at Cedar Grange Hall No. 534 at Maple Valley General meetings start at 1:00 PM followed by the mini-demos.

Breakfast informal get-together locations:
North Breakfast: Last Friday of the month at 10:00 AM. Lake Forest Park Town Centre. 17917 Bothell, Everett Hwy, Bothell, WA 98012 Bothell Way N, bordered by 170th N. & Ballinger Way N. Meet in the Third Place Books eating area.

South Breakfast: 3rd Saturday of the month at 8:30 AM. Homestead. 7837 S Tacoma Way, Tacoma, WA, 98409 (253) 476-9000

Eastern Washington (Spokane) PSLAC East

PSLAC East Member's meetings are on the 1st Saturday of each Month unless specified

below from 9:30 AM to 12:30 PM approximately.

- Informal meetings held at Spokane Tandy Leather Factory Store, 1702 North Monroe Street, Spokane, WA 99205 Contact Ken Bush (509-294-1883) for time, date (normally the 1st Saturday) for details.

We are members of PSLAC East (Puget Sound Leather Artisans Coop). The East is because we are East of the Cascade Mountains. We offer classes in leathercraft at the Spokane Tandy Leather Factory store. These classes are free and open to the public. An informational newsletter is sent out prior to each class with a short description of the class, indicating whom the instructor will be and what tools will be needed. We also schedule ad hoc classes which are announced in the newsletter. To be on our mailing list for class notifications, please send an email (including your full name) to whiterosex@aol.com requesting to be on the PSLAC East mailing list.



PSLAC Members Only Advertisement Page

Any PSLAC Member can advertise leather related products or services, subject to approval. Just send your text, picture and/or logo to stelmack@nwlink.com

MARQUIS UNIQUE LEATHER ARTISTRY, LLC

Paula and George Marquis

www.marquisuniqueleather.com



I make almost anything that can be made from leather and can be sewn by hand. I do not like sewing machines and cannot get along with them. Therefore, that excludes making clothing, which entails using very soft leather.

A lot of my works are 'bespoke items', meaning, one of, individual custom requests, ranging anywhere from books and folders to rifle scabbards, holsters and golf bags, fully carved and stamped, and any and all articles in between, which also includes saddles and harness.

I like to make articles that are practical, such as all kinds of bags (including brief cases, bible covers, etc.), belts with a challenge, mouse pads, tissue box holders, knife and sword sheaths, 11th Century bottles (sealed so they can be used as wine carafes), to various types of boxes (both useful and decorative) and other artistic decorations including such things as moulded bowls and vases as well as framed pictures.

Phone: (206)-523-6295

Email: marquispg@aol.com

Leather Big Book Covers

www.leatherbigbookcovers.com

by Bob Stelmack,
Desert Leathercraft LLC



Leather Accents

Custom Stitching Horses & Clams

John Wickstrom—Maker

Beautiful handcrafted wood

Call for information (360) 456-1688



Norm Lynds Toolmaker

Mallets, Modelers, embossing tools,
lifters and others on request

Phone: (425) 357-1001

E-mail: sagerat2003@yahoo.com

Leather Companies & Sponsors Page



**Washington State Stores: Seattle, Tacoma,
Spokane**
(www.tandyleather.com)

Seattle, WA

14713 Aurora Ave N
Shoreline, WA 98133
Manager: Andy Stasiak
Phone: 206-417-6100

Tacoma, WA

13819 Pacific Ave S
Tacoma, WA 98444
Manager: Diana Vanwyck
Phone: 253-548-1100

Spokane, WA

1702 N. Monroe St.
Spokane, WA 99205
Manager: Jason Jones
Phone: 509-328-9939

RawHide Gazette

Contact : Ken Erickson
Treasurer: Ken Erickson
Secretary: Paula Marquis
Directors: Ken Erickson, Len Madison, Roger
Kaiser, Paula
Marquis & Norm Lynds
The RawHide Gazette is published monthly
Address for information and correspondence:
PSLAC, c/o Jeff Bement, PO Box 24034 Seattle,
WA 98093
Email: pslac@pslac.org , Billing@pslac.org

PSLAC Membership:

- "a" Internet access to RawHide Gazette including Member only area & meeting attendance \$20/year. (1 Person)
- "b" US Postal Mail copy of RawHide Gazette including new Member only articles & meeting attendance \$30/year. (1 Person)
- "j" — Junior (16 and under) Internet access to RawHide
- Gazette including Member only area and meeting attendance \$10 per year.

All submissions are subject to editing for clarity and length.

All articles submitted must be accompanied by name, address and permission of writer

▼ Support our sponsors and take advantage of the PSLAC Membership Discounts... ▼

BRETTUNS VILLAGE LEATHER

Selling odd lots, miscellaneous overstocks, bargain leathers and leathercraft accessories, all from Maine, only online

Sides, Full Hides, Buckles, Key Rings, Laces, Thread, Tools, Rivets
Scrap Pieces, Elk & Buffalo Scrap

Always Free Shipping in the 48 States

www.brettunsvillage.com

Brettuns Village, Inc.

557 Lincoln St

Lewiston, ME 04240

TEL: (207)782-7863, FAX: (207)782-7448

Steve Derricott



Twister D Products

301 E. Bower St.

Meridian, Idaho 83742

(208) 884-3766 - Fax (208) 884-3767

A Division of Gfeller Casemakers, Inc.

www.lacemaster.com

Offering a 10% discount to the PSLAC members

Outside Washington
1-800-343-9949

(206) 328-0855
Fax: 328-0859

MACPHERSON

Leather Company

Leather, Shoe Finding and Saddlery

www.macphersonleather.com

Offering a 30-40% off retail discount to the PSLAC members

519 - 12th Avenue S.
Seattle, Washington 98144



Toll Free:
(800) 541-3264
**Bee Natural
Leathercare**
*The ultimate in
leather care prod-
ucts*

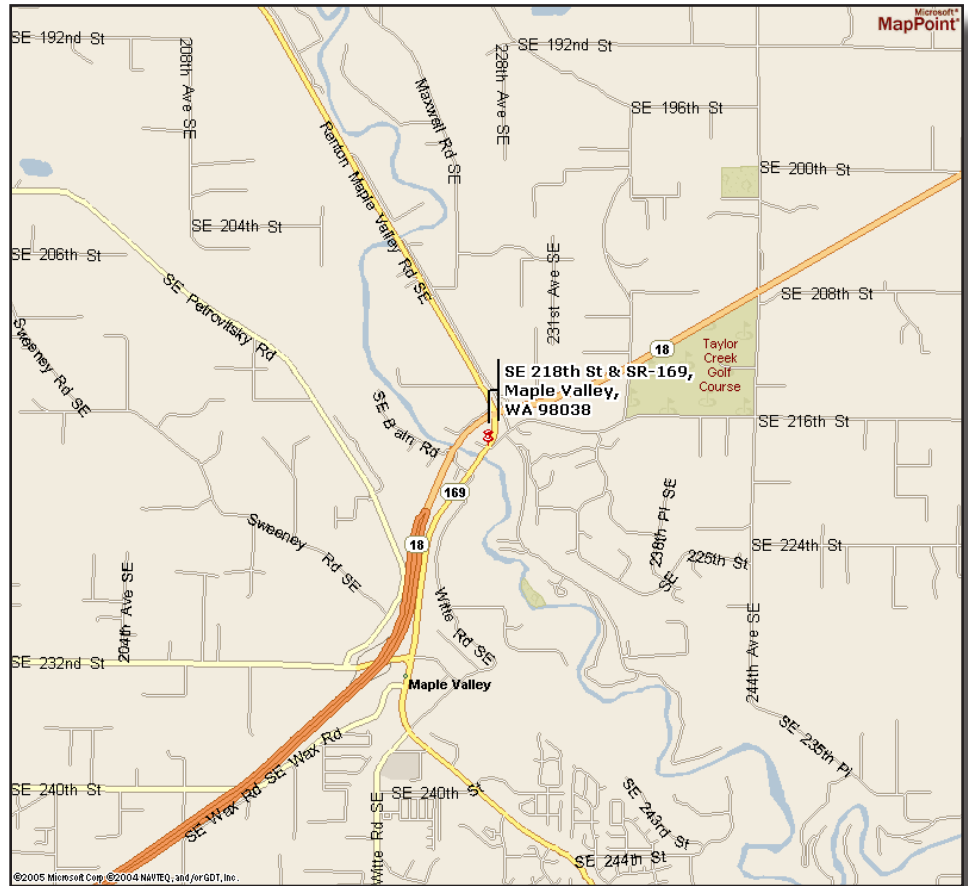
P.O. Box 820803, Vancouver, WA. 98682-0018
(360) 891-7178 , FAX: (360) 891-7166
Email: bnatura@pacifier.com

Meeting Directions to Cedar Grange #534

From I-405 take the SR169 exit and proceed toward Maple Valley on the Maple Valley Highway. In about 10 Miles you will reach the SE 216th/SE 218th Street intersection. Turn Right onto SE 218th (the downsloping hill on the left next to the Maple Valley Market parking lot) towards the big white/gray building next to the bridge (the Cedar Grange). The parking lot is on the first left.

From Highway 18 take the SE 231st, Junction 169, Maple Valley exit. Proceed to the Highway 169 (Maple Valley Highway) junction. Turn North (toward Renton) on Highway 169 and go about $\frac{3}{4}$ mile until you reach the SE 216th/SE 218th Street intersection. Turn left onto SE 218th (the downsloping hill on the left next to the Maple Valley Market parking lot) towards the big white/gray building next to the bridge (the Cedar Grange). The parking lot is on the first left.

From Issaquah take Front Street toward Hobart and Highway 18. In about 10 miles get on Highway 18 West heading toward Maple Valley and Auburn. Follow the Highway 18 instructions.



PSLAC
c/o Jeff Bement
PO Box 24034
Seattle, WA 98093
USA

