

Raw Hide Gazette

Copyright © 2016 by PSLAC, All Rights Reserved

"Without question, the *Raw Hide Gazette* is by far the best and most informative and comprehensive Guild publications of all of them! You are to be commended for your very fine and professional efforts. Keep up the good work. With admiration"
/signed/

Al & Ann Stohlman, December 1997



Puget Sound Leather Artisans Co-Op

October 2016

Hide Highlights

Page

1	Robb Barr Style Elk Class
1	Mistakes
2	Puyallup Fair Entries
3	Puyallup Fair Amateur Awards
3	PSLAC Fair Demos
4	Puyallup Leather Craft Fair 2016 Award Results
5	Paula's Flash Drive Case
6	Puyallup Fair Demos
7	Display Piece in the Leather Cabinet at the Hobby Hall
9	Paula's PSLAC Facebook Video Contributions
9	Chain Maile Necklace & Ear Rings
10	Pendleton Leather Show 2016 Update
11	Calculation & Printable Forms
12	Guitar Bra
13	Embossing with a Chase
15	Quil Ceda Tannery
16	Compact Thread Storage for Industrial Sewing Machines
17	Quick and Dirty Tracing Patterns
18	Homemade Letterpress Typecase Cabinet
19	Victor at the Ye Merrie Greenwood Faire
20	Small Book Cover
20	Skip's Shop
21	Meeting Activities for October 2016

Our PSLAC MISSION is...

To further the enjoyment of leather and to help others learn more about the real joy of leather - working as a group and sharing ideas and knowledge of leather, its uses and how to use it. To pass on this knowledge to others and then have them pass it on to the new members who come later. A fellowship with peers, young and old, expert and non-expert, anyone who has the love of leather.

To show and demonstrate to people outside the Co-Op leather in all forms and try to help them to become interested in leather.

...to share...

time talent, with all others in the Co-Op, especially the young.

Robb Barr Style Elk Class

Amanda Fraker's class on tooling an elk is definitely on. There are still a few seats left so contact the Spokane Tandy store to register. See this for more info:

Robb Barr Style Elk Class Presented by Amanda Fraker

Date: October 22-23, 2016

Time: 9AM to 5PM

Location: Spokane Tandy Leather Store,
1702 North Monroe, Spokane, WA 99205

Phone: 509-328-9939

Cost: \$85 per person (payable to Spokane Tandy at time of registration)

Seating is limited to the first 15 artists



All materials will be provided for the class including

leather, dyes, cements etc as well as a special hair blade tool that can be taken home afterwards.

Tools you will need to bring to class:

Stone (Amanda may have loaners if you don't have your own)

Mallet

Swivel knife

Stylus

Modeling tool

Smooth bevelers (2 sizes)

Smooth pear shaders (2 sizes)

Matting tool (your choice of pattern)

Xacto knife.

Mistakes

I read somewhere that a professional leather crafter doesn't mean you don't make mistakes—it only means you know how to cover them up!

We all see our own errors and lament when we point them out to others. And, the truth is that most people don't even notice the mistake.

Most of my errors occur when I am rushed or have something weighing on my mind. In either case, the challenge is finding ways to camouflage the mistake:

Blotchy or uneven dye

Over dye with darker color

Extra tool marks

Smooth out with a modeling spoon

Error in cutting design

Use error in carving to extend the design

Sewing in the wrong area

Errant sewing holes can be hidden with toothpick, acrylic glue, moisture and smoothing

Stamp not aligned

Re-stamp with stamp with more force

Odd marks on leather

Use decorative cuts to hide error

...and the obvious tool to use is the C453 stamp (Camouflage Stamp).

Bob Stelmack

Richland, WA

Puyallup Fair Entries

First picture show the full cabinet of the professional section, the second photo showing the binder that **John Wickstrom** made and got the **Reserve Grand Champion** with it.

In the first picture there is a large mural on the back wall which needs some explaining. The work was done by the gentleman who is the Leather Judge. He puts in pieces every couple of years for display. He does mostly murals that look like tapestry at first glance, but, on closer inspection it is all made from leather. He punches out rounds of leather approximately 1/4 inch in diameter of all the different colours of leather and then glues them all down in neat rows to make the picture. It takes THOUSANDS of those rounds to make the picture in the photo. To give an idea of the size, my plate under the picture is approximately 15 inches long. I have one more demo to do next Saturday and I will try and take a close up of the mural to show the work.

Below are photos of the full cabinet of the amateur section and a picture of **Jeff** and yours truly doing our demo today.

Paula Marquis



Puyallup Fair Amateur Awards

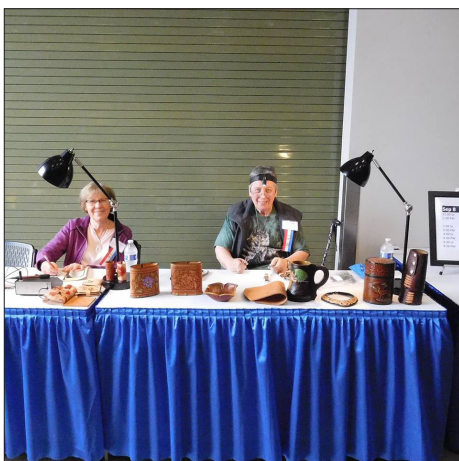
When Jeff posted his pictures on the PSLAC Facebook page a few days ago, he forgot to mention, not only did he take the **Grand Champion with his holster** (I took a closer picture to show the holster better), he also took the **Reserve Grand Champion with his Christmas Table Top display** with a bowl to have a candle to light up the Christmas dinner. So CONGRATULATIONS Jeff for scooping the pool in the amateur section. You realize of course, that next year you have to enter the professional section!

Paula Marquis

PSLAC Fair Demos

Did my first demo today at the Puyallup with John and Gladys and took a photo of my plate that took first and grand champion. We had a good variety, John tooled, Gladys burned and I braided knots.

Paula Marquis



Puyallup Leather Craft Fair 2016 Award Results



Amateur Cabinet entries

LEATHER CRAFT – DIVISION 203

1825 JUNIOR LEATHER CRAFT
No entries

1850 PICTURES
Honorable Mention.... Steve White

1855 TOOLED ITEMS
1st/ Grand Champion.... Jeff Bement
2nd Fredrica Davis
3rd Lovebilla Schaffner
Honorable Mention.... Steve White
Craftsmanship... Dave Jensen
Craftsmanship... Leo Schutter

1895 STAMPED ITEMS
Honorable Mention.... Fredrica Davis

1905 APPAREL/ACCESSORIES
1st... Jeff Bement
2nd ... Lovebilla Schaffner
3rd ... Steve White
Honorable Mention.... Fredrica Davis

Craftsmanship... Leo Schutter

1910 UN-TOOLED/BRAIDING
1st... Jeff Bement
2nd ...Dusty Wert
3rd... Barbara Lourdes

**1915 NATIVE AMERICAN STYLE
ITEMS**
1st ... Leo Schutter
Honorable Mention.... Dusty Wert

1920 OTHER LEATHERCRAFT
1st / Reserve Grand Champion... Jeff Bement
2nd ... Fredrica Davis
3rd ... Dusty Wert
Honorable Mention.... Leo Schutter
Craftsmanship...Darlene Greenawalt
Craftsmanship... Steve White

**LEATHER CRAFT, TEACHERS
AND PROFESSIONALS – DIVI-
SION 204**
Class 1st 2nd
1930 PICTURES

Glenn Woessner

1932 TOOLED ITEMS
1st / Reserve Grand Champion ... John Wickstrom
2nd ... Glenn Woessner

1940 ALBUMS, SCRAPBOOKS
1st ... John Wickstrom

1946 HOUSEHOLD ITEMS
1st/ Grand Champion.... Paula Marquis
2nd ... John Wickstrom
3rd ... Gladys Wickstrom

1952 APPAREL/ACCESSORIES
1st ... John Wickstrom

1954 UN-TOOLED/BRAIDING
No entries

**1964 LEATHER WITH OTHER ME-
DIUM**
1st ... Paula Marquis

**1965 NATIVE AMERICAN STYLE
ITEMS**
No Entries

1966 OTHER LEATHERCRAFT
1st/ Award of Merit ... Michael Foley
2nd ... Paula Marquis
3rd ... John Wickstrom
Honorable Mention.... Glenn Woessner

submitted by:
Jeff Bement
Seattle, WA

Paula's Flash Drive Case

At the September PSLAC Members meeting we all gathered at the Grange Hall for a really great small project. **Paula** had been working with an idea for carrying these guys around in a case instead of having them just bounce around in our pockets, purses or laptop cases.

When I saw her prototypes on the **PSLAC Facebook page** I asked her if she would let me copy her design. The other members at the August meeting begged her also and when she graciously accepted the September project was born. An ideal project for the meeting since most everyone could finish it during the meeting. Nearly everyone did finish but, no, I didn't get mine completely done – nearly though.... ;~)

This is a project that will likely be a great stocking stuffer for Christmas – **Debbie** and I plan to make several. A new Members Article will be arriving in the Members section of the PSLAC Website complete with patterns and detailed construction techniques within the month so keep looking.

Thank You Paula, It was a great project and a bunch of fun too.

Roger Kaiser

Comments:

Little flash-drive containers for those on the go. Finished them this afternoon. Not happy with the sewing, should never see when you are short on time, stitches go crooked and the awl doesn't hit the Centre of the prick mark. Good thing these were only experiments. The next two will have some improvements in design and construction. The decorations were burned, painted and sealed with super shene.

Paula Marquis



Puyallup Fair Demos

The Fair is over for another year, went in and fetched all my gear.

Only did 4 demos this year. They were a lot of fun as they always are.

I know **Dusty Wert** and **Fred Nachbar** did a demo, but, I don't think they took any photos and **Barbara Lourdes** and **Dave Jensen** also did demos as did some other people, again I think they didn't take any photos. I would like to encourage all the demo people to take photos next year.

The first demo I did with **John and Gladys Wickstrom** and it worked out really good as we had a variety of things going. John was tooling, Gladys was burning and I was 'knotting' some key rings, the pineapple knot, that is.

The next demo was with **Len**, and again I took my camera, but, being somewhat senile I forgot to take a photo. Sorry Len, my fault. We had some interesting people come through and talk to us. I have to say Len is SO good with kids, he keeps them happy and enthralled watching him and talking to them.

Teamed up with **Jeff Bement** for the next demo. He brought some nice stuff for display and one piece in particular always gets the kids enthused and he too is very good with the kids.

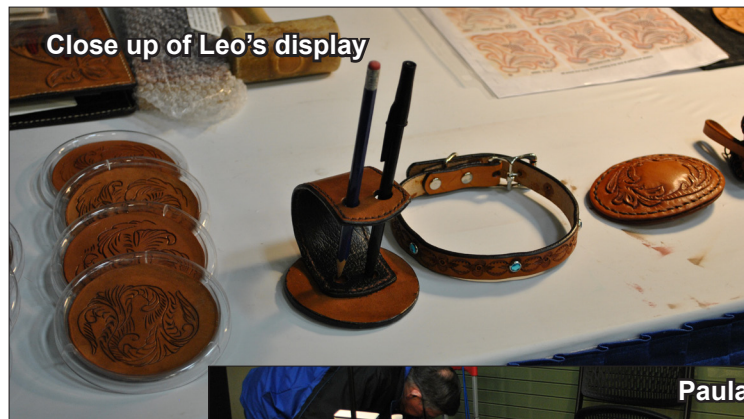
And, my last demo I teamed up with **Leo Schutter**. We make a good team. He was tooling and I was 'knotting'.

I have to say that it seemed to me that this year the crowds were pretty thin coming through the **Hobby Hall**, maybe it was just my imagination as the Fair was an extra week longer and people were spreading themselves out in their attendance. Friends told me that there were big crowds everywhere, so it must be my imagination.

My friend **Karen**, who most of you will remember from earlier last year, she came to the meeting and did the workshop on colours and colouring. Well, Karen also does jewelry and she put in a 'chain maile' necklace, which I'm happy to announce took first place and the Grand Champion. She also put in a set of beaded earrings which took 2nd place.

Now we can all start thinking about what projects to make for next year's Fair.

Paula Marquis



Display Piece in the Leather Cabinet at the Hobby Hall

The gentleman that does the judging of the leatherwork at the Hobby Hall sometimes puts in a piece for display. This year he put in a large framed picture. It is an amazing piece of work that would have took endless hours of patience, not only in the putting together of the picture, but, the preparation of all the pieces and their colour separation and sorting.

The picture is of the Grand Tetons and the countryside. The whole picture is made from small circles of leather punched out of all sorts and colours of leather, and then he had to map out his picture. Each of the little circles are placed evenly, row upon row, slightly overlapping and glued down.

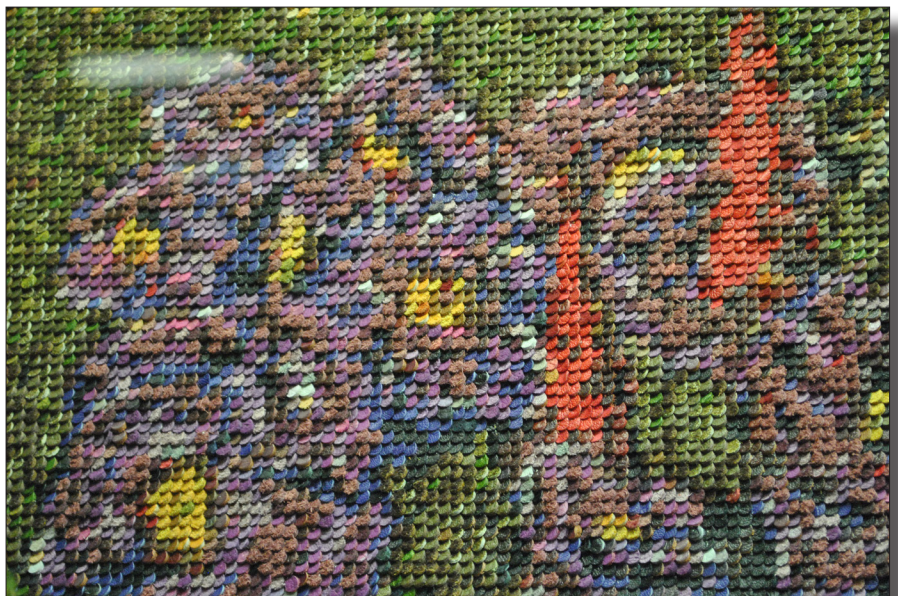
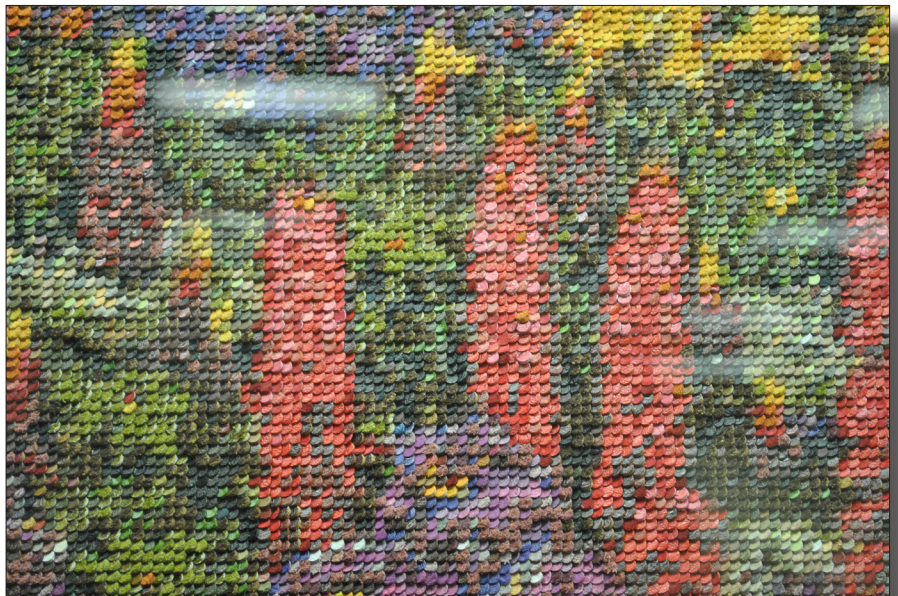
Please see photos and explanation.

Paula Marquis

GRAND TETONS

This leather art was a National Gold Medal recipient and is constructed from 43,500 leather pieces that were recycled from various leather items (jackets, purses, gloves, shoes and even a couch).

This is an exhibition piece only.





Entry Close Up Samples

Paula's PSLAC Facebook Video Contributions

May I suggest, that, especially PSLAC members, sign up

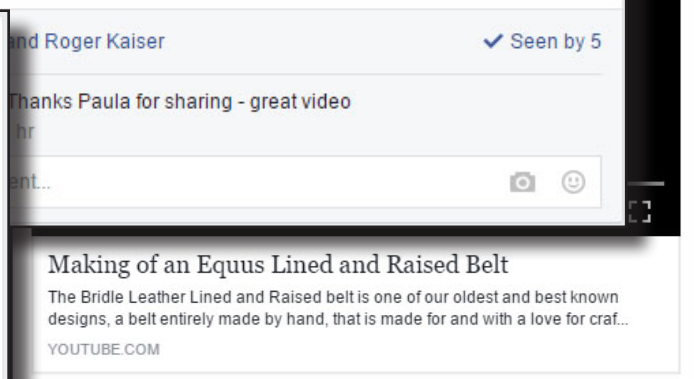
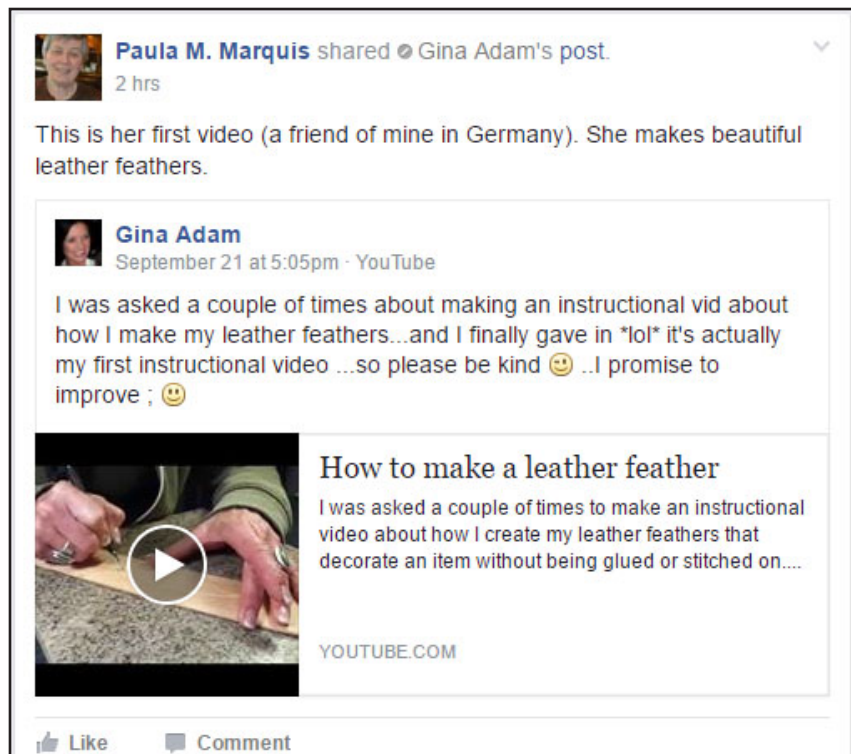


otherwise you may miss some good leather craft information. Like these pictured here from Paula's Internet research.

I personally find that videos that demonstrate specific leather tips are more entertaining and easier to comprehend rather than just articles, newsletters, and books. Although, it's hard to beat those illustrated Al Stohlman books.

Hope you can come and join.

Bob Stelmack
Richland, WA



Chain Maile Necklace & Ear Rings

These two Fair entries are Karen's necklace and her earrings, and a close up of the necklace to show the gold rings that really give it a sparkle when held in the light



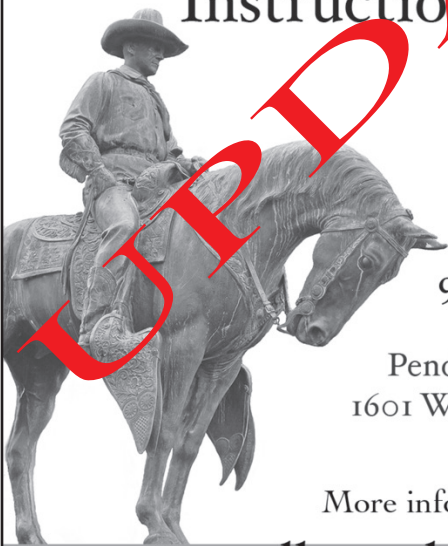
PENDLETON LEATHER SHOW

Pendleton, Oregon

Trade Show

NOVEMBER 4 & 5

Instructional Classes



9AM-5PM both days

Pendleton Convention Center
1601 Westgate Pendleton OR 97801

More info? Call 307-737-2450

www.pendletonleathershow.com

Pendleton Leather Show 2016 Update

We have recently updated the website www.pendletonleathershow.com adding few more features—including a simple and secure shopping area to view and purchase classes surrounding the Pendleton Leather Show. Several new instructors have joined the teaching roster: **Ed LaBarre**, **Gene Flaten** and **Annie Margarita** will be joining us for the first time. All instructors will be sharing so much information throughout the weekend—many unique topics and literally a class for everyone from beginner to advanced. Please check out the 2016 subjects before spots start to fill up! www.pendletonleathershow.com/shop

Once again, the **Oxford Inn & Suites** is the host hotel for the Pendleton Leather Show. The Oxford is located very close to the Convention Center, has extra amenities and

personal attention unusual in major chains and continues to rank #1 on TripAdvisor. You can enjoy a **special room rate**, however the Show's code **LEATHER** may only be used on reservations made before October 7th. So call 541-276-6000 or book online <http://www.oxfordsuitespendleton.com> today using code **LEATHER** to receive a special discounted room rate.

If you know you are attending the show, please take a few seconds to Register now: www.pendletonleathershow.com/preregistration-2016-show/

By registering now online, you receive several benefits:

By filling out the simple form online, your information will be entered and your name badge will be waiting for you

at the show. Simply ask for your tag at the Registration area when you first enter the Convention Center and head right into the show. Easy!

You will be automatically entered for the Leather Dollars and any door prize drawings throughout the weekend and receive emails and a postcard prior to every show.

Lastly, only your name badge will grant you access to the latest addition to the Leather Show weekend in Pendleton; **Hamley's & Co.** are hosting a reception for all trade show participants! Friday, November 4th, 7-9pm inside Hamley's, the upstairs Slickfork Saloon, downtown Pendleton. Plan on LIVE music, appetizers, a no-host bar!

We are thrilled to have Hamley's share their historic building with the attendees; a big thank you to Hamley's, **Parley, Penny & crew** for this warm and welcoming gesture for everyone attending the Pendleton Leather Show.

Pendleton is a great smaller town and continues to be a fabulous host for this Leather Show—we hope you can join us again this year!

Vandy & Luke



Home	Large Text Templates	Pipe Cut Templates	Scale Rulers	Protractor Templates	Circle Divider	Clock Face Templates	Hub Spokes Spindles	Cone Templates	Find Scale From Image
Site Map	Print Tips	Imperial	Imperial	Imperial	Imperial	Imperial	Imperial	Imperial	Imperial
Diameter Pi Tape	Timing Tape	Spiral Templates	Oval Templates	Polygon Templates	Arc Templates	Star Templates	Degree Wheel	Sundial Templates	Miter Box Templates
Imperial	Imperial	Imperial	Imperial	Imperial	Imperial	Imperial	Imperial	Imperial	Imperial

Diameter: 6"
Total Increments: 60

Tick Lines: ☒
Holes (Circles): ☐

Long Marks every: 5 ☒
Long Mark Numbers: ☒
Overline: ☐
Line to Center: ☐

Clockwise: ☒
Anticlockwise: ☐
Center Label: ☒

Circle Divider Full Scale Templates

Enter number of increments and diameter to draw full scale printable templates.

Hit **Clock Face** to draw clock face template.
Hit **Protractor** to draw protractor template.
Drag **Diameter** slider to size.

Protractor **Clock Face**

Check **Holes** and enter **Hole Diameter** and **Hole Center Setin** to draw circles at increments instead of lines.

Calculation & Printable Forms

www.blocklayer.com/default.aspx

Jeremy Hayes from Facebook Leather Artisan's Digital Guild Group posted a link to a very useful webpage. It includes the following:

- General Calculators
- Stair Calculators
- Roof Calculators
- Deck Calculators
- Gazebo Plans
- Concrete Calculators
- Centers Spacings
- Scale Rulers Templates
- Dovetail Templates
- Wall Framing
- Tank Volumes
- Triangles/Circles
- Metric Conversion
- Concrete Blocks
- Printable Template
- Pulley-Belt RPM-Speed

...and in this example I was able to evenly mark the lacing holes for a 4-inch leather disc.

Give it a try on your next project.

Bob Stelmack
Richland, WA



Guitar Bra



washers to raise the height of the button to give more room for the guitar strap attachment.

Turned it inside out and applied the two sided tape at the open edge of the “thing”, leaving the backing of the tape on. Then just slid the “thing” and positioned in the correct place, then removed the backing of the two-sided tape while holding in position.

Now hand and forearm slide easily to reposition the picking location.

Now I need a name for the “thing”. Any suggestions? Boot? Slicker? Arm slide? Maybe Guitar Bra?

Bob Stelmack
Richland, WA

Guitar Bra

I recently started to take guitar lessons from A-Sharp Guitar Instructions in Richland, WA. Started playing guitar when I was a

I don't know if others have my same problem, but my forearm/heel of my hand sticks to the gloss finish of my electric guitar as try to slide my hand to reposition my picking location. The only thing that has worked in the past was a long sleeved shirt.

Washers extending strap mounting hardware



teenage when my mother gave my sister and I money for weekly lessons. I pocketed the money for dates and as my sister to show me what she learned from the Mel Bay Instruction book. So mom never knew--or so I think.

Since leather craft is my hobby, I made a “thing” (it needs a name, any suggestions?) that slides on to the guitar body and is held in place with some two-sided clear 1/4” tape. The tape can be found at: <http://www.wawak.com/Leather-Tape-1-4-x-60-yds>

I used some thin black chrome tanned leather that I had traced the basic shape of the guitar body on, cut two pieces and sewed them together with the finished side facing each other.

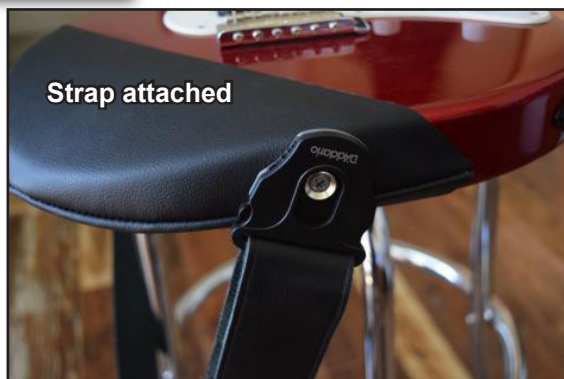
I tested to see where to punch a hole for the strap button.

Also, I removed the strap button. Replaced the screw with a little longer one and added a few



When I started to get lessons over 50-years later, I found out I did everything wrong.

Strap attached



Guitar back



Guitar edge



Embossing with a Chase

Last month I showed how to use letterpress printing metal type and **Grey Ghost Graphics** stamping plates in a home made chase.

To recap: The most important dimension in letterpress printing is 0.918 inches. Everything printed by the letterpress process should be made up to type height, i.e. type, plates, embossing plates, photopolymer plates, brass rule, other borders, etc. In the British-American Point System it is 0.918 inches (23.32mm).

Grey Ghost Graphics produces embossing plates that are one-inch high. The type is 0.918 inches leaving a 0.082 difference. All the items in the chase have to be the same height. I made a jig for my table saw to cut



Wooden strips used to raise letterpress type to the one-inch height of the grey Ghost Graphic stamps

some thin hard maple strips the were approximately 0.082 inches thick.

Then flipping the chase over those thin 0.082 strips of wood were placed behind the type and the chase was placed on the leather.

So, I wrote to **Jeff Mosby**, of Grey Ghost Graphics as asked:

As you may or may not know, I use your stamps in conjunction with letterpress metal type. That old type used in the old western newspaper shops. To use your stamping plates (1-inch thick) I have to first emboss with the plate you made, then compose the wording in the metal type and press again. Often I don't get it all lined up and I need to scrap that piece of leather and try another. I wrote an article in the RawHide Gazette, on page 8 & 9 (pslac.org/public/08_aug16.pdf) that describes the extra steps I have to do to emboss everything at the same time.

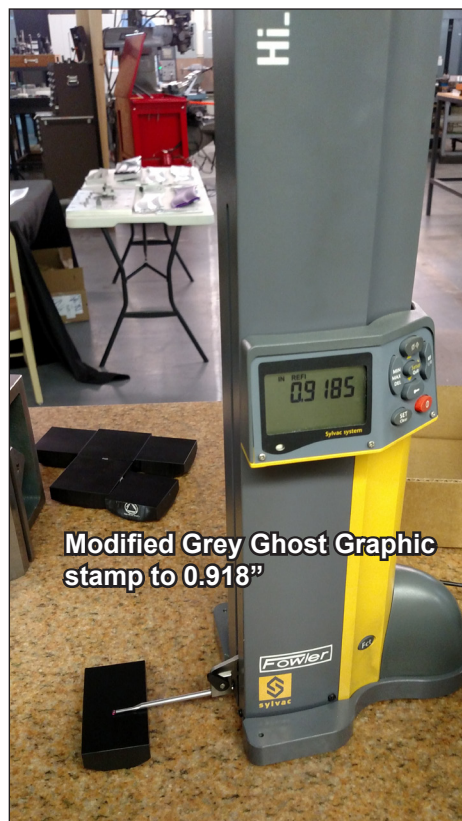
So, I've taken the stamping plates you made for me to a local machinist to remove enough of the back of the plate to get the overall height the same as the letterpress metal type. That height is 0.918".



So, I need have some more plates made from you and wondered if the stock you use comes in 0.918" thickness, or if you have the capacity to mill the thickness to 0.918"?

I suspect the answers are no, but I thought I would ask anyway. If not, my machinist will make it work for me.

Jeff said that he did not have the facilities to mill the stamps to the required 0.918" height. So, I contacted a local machine shop, **Innova, Precision Machining & Manufacturing**, Richland, WA and the General Manager, **Sandeep Singh** was more



Modified Grey Ghost Graphic stamp to 0.918"



than helpful in understanding the problem and had the milling equipment to do the job.

As a side note, when I was in Metal Shop in high school, all the milling was done on rather crude machine that required precision measuring and the cutting bit was manually adjusted to take of the next layer of material.

Now, Sandeep showed me their CNC (Computer Numeric Control) machine and the precision measuring tools to check the accuracy of the tooled parts.

Here you see the vertical measuring tool and it shows the 0.9185" height of one on

Grey Ghost Graphics stamping plates. The measuring tool is on a dead flat solid 12" slab of granite. What a tooling surface that would make!

Check with several machine shops for the best price as precision milling can be quite costly, but in my case the time savings will pay for itself quickly. I've made many book covers up to now and it has to be close to 3,000.

---- o O o ----

You might be asking yourself why I don't just use a Laser Cut or Engrave Unit to print designs directly on the leather, instead of having Grey Ghost Graphics make plate for me? Well, I was lucky to know a school shop teacher who had and taught CNC machines, laser machines along with welding. We spent the better part of a day and I got



to work with the laser and its software. I found some serious draw backs with its use on leather in my situation.

- (1) Relative high cost to purchase, but over time I am sure it would become cost effective. At the time costs were \$4,000 to 6,000.
- (2) The actual laser had a specific life and relatively expensive to have replaced.
- (3) Although the unit had a cover and an exhaust system, the smell of burning leather was quite pungent in the work area.
- (4) I live and work in a residential area and even with filtered air exhaust the neighbors would have shut me down.
- (5) The laser unit requires water cooling so it could not be in a unconditioned space (i.e. garage, shed) for

fear of freezing or over heating in the desert area I live in.

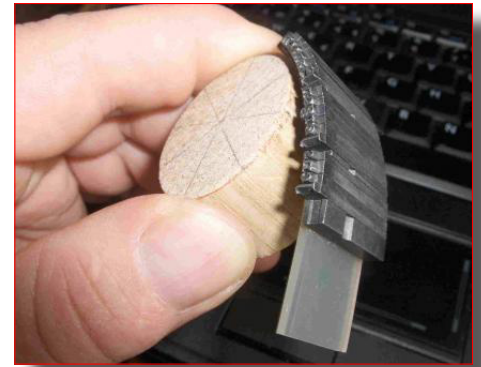
---- o O o ----

One of the main reasons I use the letterpress type to impress the text into the leather, is that it has that old time quality and feel of fine printing like high quality wedding announcements.

I have, over time, probably spent as much as a cheap laser unit would cost, but the cost was spread over a 16-years in manageable amounts and my process does not have the laser cut/engrave units disadvantages

Here is a sample of a "type high" unit wrapped in cord, to print letters, circle and lines. This kind of cobbling together of type and other items can be use to create interesting embossed patterns on leather. This sample (below) was in a www.briarpress.org/ advertisement in the classified section for the Museum of Printing in 15 Thornton Ave., Haverhill, MA 01915 for a sale at the museum.

Bob Stelmack
Richland, WA





Quil Ceda Tannery
 Address: 3922 88th St NE, Marysville, WA 98270
 Phone: (360) 659-1333
 Hours: Open today • 9AM-4PM

We do repairs on your leather!

Here are a few of the services we offer:

- * Patches
- * Main zipper replacement in jackets, etc
- * Rips in leather garments
- * Snap Repairs/Replacements
- * Grommets, Rivets
- * Alter motorcycle chaps (extend or take in)
- * Hem leather pants or chaps
- * Punch holes in belt
- * and SO much more!

If you are in need of repairs, just ask and we will take a look! We can also sew through nylon, canvas and vinyl!

Oh, and one more thing...

We tailor custom leather chaps!

Whether it is for motorcycle riding, horseback or bucking hay, we can make several styles.

Usually we tailor them from buffalo, but if there's a different type of hide you would like them made from, we can do it.



Quil Ceda Tannery

If you have never been to the Quil Ceda Tannery in Marysville, WA, then you might be over whelmed, like Skip...

www.quilcedaleather.com/

From the Quil Ceda Leather Quality Leather Products website:

Welcome to the home of Quil Ceda Leather Company. Here you will find links to information about our company, as well as an extensive catalog to many of the products we offer in our retail store. Also, please check out our FACEBOOK page! We have loads of photos added every week. You can find us by searching "Quil Ceda Leather Co."

We have expanded our stock of leather crafting supplies! From patterns to conchos, we have everything you need to get started on that new project! We are also carrying a wide variety of leather crafting kits...come by and see all our new goodies :)

As many of you know, we no longer do leather tanning. We do offer easy to use home tanning kits that are fully instructional and take about a week to complete!

We also carry these skull bleaching kits! And remember, we can ship ANYWHERE in the U.S. and Canada!

Have you seen our cozy sheepskin slippers?

We love them!

WE NOW HAVE COWHIDE SCRAP!

Pieces are at least 1 sq. ft. (most are bigger). These are going for \$4/lb and remember, we can ship anywhere in the U.S. and Canada! Call in to order, or better yet, come by the shop and see all the changes we've made! We'd love to see you :)

This is my favorite place the pick up deer and elk skin. They have a large selection in several colors:

- Gold (many people call this color natural or buckskin)
- Smoke (a cream color)
- Acorn (a rust color)
- Chocolate (a lot like the color of a Hershey bar)
- Black (self explanatory)

Back in 1994, I had Quil Ceda make a deer skin jacket for me. Since I am a little bigger now, my son has it.

Bob Stelmack
 Richland, WA

Now selling:

Hair on Cowhides

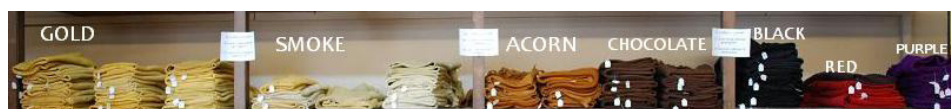
Great as a rug, throw for the bed, or as part of your next project
 Ask us about ordering one today!



Check out the great cowhides rugs also available!



7-point star cowhide rug:
 40" diameter: \$170
 60" diameter: \$275
 80" diameter: \$400





Sewing room



Spools mounted



Spools mounted



Hand ratchet cutting tool (Home Depot)



7/8" speed drill

Compact Thread Storage for Industrial Sewing Machines

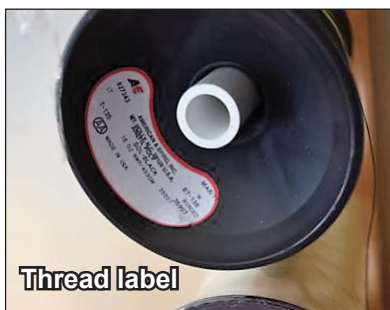
I have two sewing machine. (FERDCO TK-1245 and the FERDCO Pro-206H; Pfaff and Consew clone respectively)

The **1245** is set up with 207 (or 138) top thread and 138 bobbin and is used for most of the leather book cover construction. The **206H** is set up with 92 (or 207) top thread and 92 (or 138) bobbin. During my last visit to Sheridan, WY, Herb Rockey and I found this second hand sewing machine and tool sale building near the King Museum. In one of the shelves they had spools of industrial thread for \$2 each. I picked up some 207 and 138 colored thread in red, yellow and orange along with black, brown and white.

Now I had a storage problem.

The posts for the spools of thread were white 1/2" plastic pipe. Used a new hand ratchet cutting tool to make clean cuts 8" long.

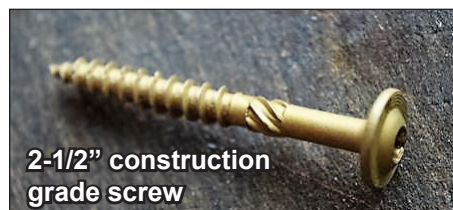
Drilled 7/8" holes through the 8-foot 2" x 4" at 4-1/2" intervals and I wanted a small foot print storage, so I mounted vertically on the wall with two construction grade screws.



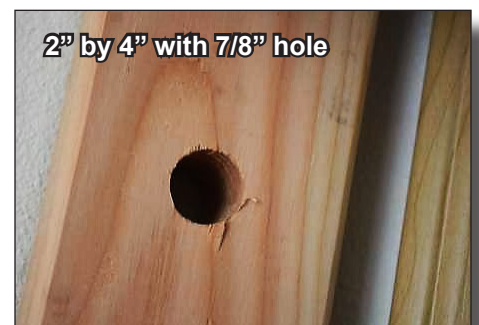
Thread label

Placed the spools on the plastic posts with the bottom showing so I can see the type of thread (nylon or polyester) and gauge (92, 138, or 207). Also, left the wrapping in the thread, or rewrapped to keep the dust off.

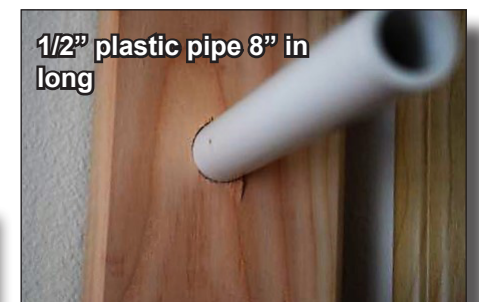
Bob Stelmack
Richland, WA



2-1/2" construction grade screw



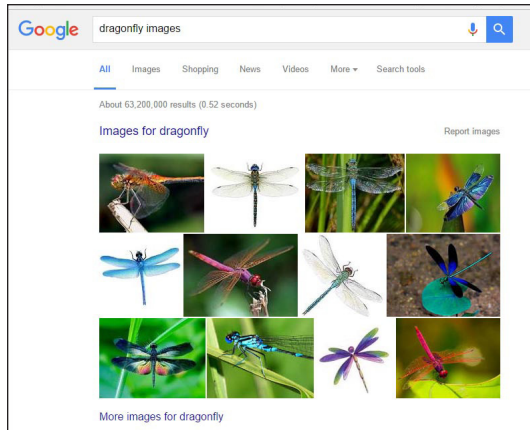
2" by 4" with 7/8" hole



1/2" plastic pipe 8" in long

Quick and Dirty Tracing Patterns

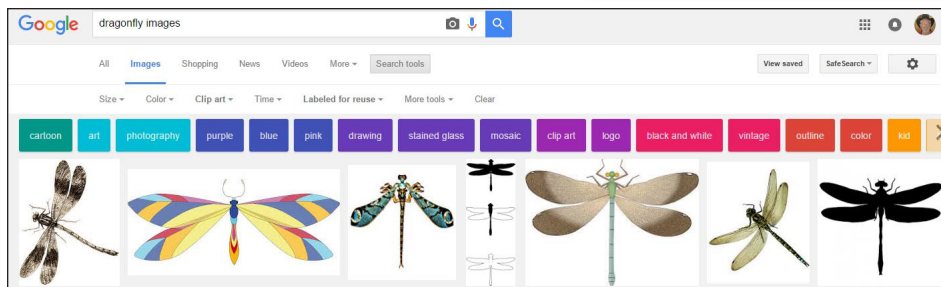
I often get asked to carve a “whatever” on my book covers. So I start by searching using Google for royalty free images.



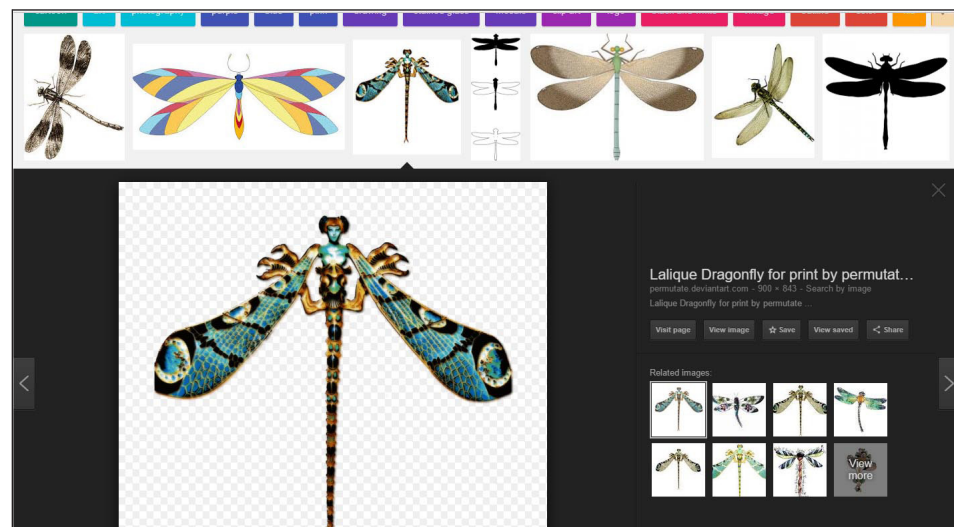
(1) Start Google search, in this case “dragonfly images”

(2) Then select “Images for Dragonfly”

(3) Click on “Search Tools” and “Labeled for Reuse” and either “Clip Art” or “Line Drawing”

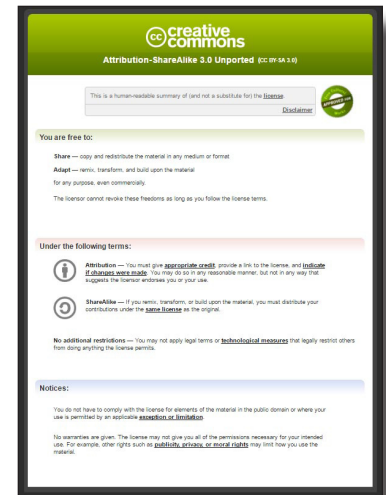


(4) Click on a potential image for use.



(5) Click on “View Page”

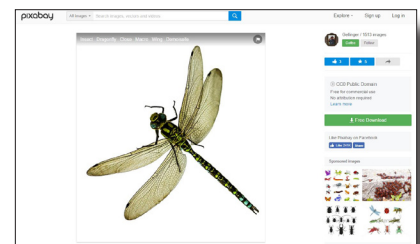
(6) Read the page and look for restrictions. In the first case there is a licensing agreement for free use. It does, however, require some attributions for its free use. If you disagree, then look at a different image.



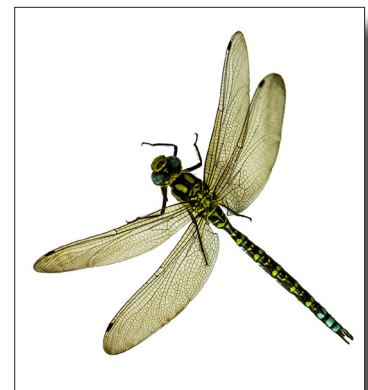
(7) Start the search again, and pick a different image.

(Repeat steps 4-6)

This time the image is free for use without any strings attached. So download the image and open with some image viewing program. (i.e. The default image viewer, Paint, Photoshop, etc) and check the size on plain paper.



Check with your printers manual to see what



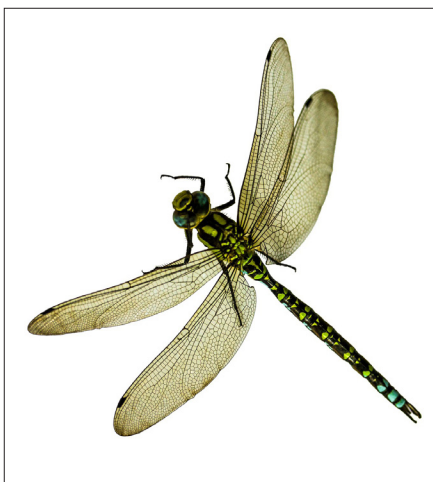
kind of transparency paper it needs and be sure the printer accepts transparency paper. Then put in transparency paper and print again. Prest-o-change-o you have a tracing pattern.

If your printer will not print on transparen-



cies, then just use good quality tracing paper or vellum.

If you really like some image that is not available for use by either the copyright statements or even without explicit copyright statements, then simply contact the



author and ask for written permission. Ask and state the intended use. For example, *"...for one time use on a leather book cover to be sold to a customer and for display as an example on a commercial website. Attribution to the author on the website, but not on the book cover..."* or some words to that effect.

You would be surprised how generous people are to share their creations.

Even large organizations, such as Cocaine Anonymous (CA) gave permission to use their logo on a book cover. Other organization will, for a fee, license their art work of

logo. Narcotics Anonymous (NA) has an open period twice a year when logo request submittals happen twice a year and if your proposed logo use is approved, then a yearly \$500 fee is required.

Bob Stelmack
Richland, WA

Homemade Letterpress Typecase Cabinet

I'd been meaning to build a crude cabinet



for the trays. Receiving the new type motivated me to do so. Before I would stack



them one in another and was always afraid of dropping one.

Skip S.
Burlington, WA



Victor at the Ye Merrie Greenwood Faire

Yesterday, I got a chance to visit the yearly **Renaissance Fair** in its new location in Kennewick, WA. It is always fun to see what leather items have been created for participants and attendees to wear.

Victor does actual leather construction during the fair. Here he is creating a leather bottle carrier for a customer. Just some simple leather straps created with a Tandy wooden strap cutter and assembled with rapid rivets. Victor places the rivets by wrapping the bottle and using a sharp tool pierces the both layers of leather to identify where to punch the rivet holes.

As you can see, Victor makes some flamboyant hats. The hats are all pre-made and one size fits all. How does he do that?

First, I failed to take a picture, but I'll try to describe it. On most hats the brim and the crown meet and are sewn together. Later a lining is sewn in where the brim and the crown meet to be the sweat band and make the hat more comfortable.

Imagine the brim as a solid piece with no opening for the head. The solid brim is sewn to the crown. Then a relatively small hole

is cut for small head to fit.

Then when the customer comes to purchase the hat the hole is enlarged a bit at a time to make perfect fit.

As for the Faire itself, it almost too much to see in one day. They had several open air stages: Boar's Head Stage, Merchant's Stage, Greenwood Stage, Scullions' Stage, Queen's Stage, Musician's Tree, Clan Bosko, Greenwood Chapel, The Crew, The SCA, Tri-Cities Amtgard, The Jousting Alliance, Knights of Veritas and Casta Ferrata Romans.

Activities included: Dancers, puppet shows, comedy, music, magic, jousting, sword fights, various combat styles, story telling, and vendors selling Renaissance Fair apparel and decorative items. And of course food. Think I'll go again today.

Bob Stelmack
Richland, WA



Small Book Cover

I'm rather happy with the way this cover turned out. It is a real nice soft piece of remnant. I wish it would've been enough for large big book hardcover, but it's pocket soft cover size. Still turned out nice I believe.

Clasps are a nice touch and easy to put on. There weren't directions so I put the one on the front of the cover first prior to adding the pocket. I used a little bit of a duck tape over it so it wouldn't catch on the book cover. It is pretty flat though. I believe I purchased that on eBay, but I saw them at Michael's also. They can't be over five dollars each or maybe a little bit more.

I'm thinking that I could add the cost to the "additions" on the price list. Like 'strap, pen holder etc, in my opinions. Classy touch.

Skip
Burlington, WA

Skip's Shop

All the work is done my shop. Looks welcoming, don't you think?

Skip
Burlington, WA



Meeting Activities for October 2016

With the Puyallup now behind us for another year and we've all picked up our winning, etc., entries, they should all be brought to the meeting for show and tell.

Of course, now is a good time to start thinking up ideas for next year's Puyallup. The sooner we start on our projects we won't be scrambling madly getting our entries finished in time.

For my demos at the Puyallup this year I sat and braided knots. **John** asked if we could do some knots at our meeting activities and the idea when put forward was popular, so for the October meeting we will be doing knots. We'll start with the most simple and easiest knot - the Spanish ring knot - then time permitting we will move up to the Gaucho Knot of an over one, under one sequence.

Below is what we will all have to bring to the meeting:

- Kangaroo Lace (2 colours)

- Fid
- Dowel (5/8" or 3/4" diameter and 12" long.)
- Small cutting board
- Scalpel
- Strip of 3/4oz veg. tan leather 3/4" wide and the strip to be about 15" long.
- Contact Cement
- Lacing needles, hook and eye type. (2 or 3 in case of breakages)
- Flat nosed pliers.

I can't believe we are now heading towards Christmas again and it is time to start think of what we will make for the Christmas Gift Exchange.

Also, coming up at the beginning of November is the **Pendleton Trade Show**, so it is time for those thinking about going to look for and sign up for workshops.

And, of course, if I've forgotten something in the above list, please bring it along.

Another request has been for a workshop on book binding. Not sure if we can manage that in a meeting afternoon, may have to consider doing an all day workshop on a

Saturday. Something to think about.

See you at the meeting.

Paula Marquis

CHECKLIST	
<input checked="" type="checkbox"/>	<u>Ready for fun</u>
<input checked="" type="checkbox"/>	<u>Complain</u>
<input checked="" type="checkbox"/>	<u>Good attitude</u>
<input checked="" type="checkbox"/>	<u>Learn something new</u>
<input checked="" type="checkbox"/>	<u>Something to share</u>
<input type="checkbox"/>	<u>What to bring</u>

Meeting Times & Location

Western Washington (Seattle/Tacoma/Everett)

General Member's meetings are on the 2nd Sunday of each Month unless specified below. 1:00 PM to 4:00 PM approximately. Meetings held at Cedar Grange Hall No. 534 at Maple Valley General meetings start at 1:00 PM followed by the mini-demos.

Breakfast informal get-together locations:

North Breakfast: Last Friday of the month at 10:00 AM. Lake Forest Park Town Centre. 17917 Bothell, Everett Hwy, Bothell, WA 98012 Bothell Way N, bordered by 170th N. & Ballinger Way N. Meet in the Third Place Books eating area.

South Breakfast: 3rd Saturday of the month at 8:30 AM. Homestead. 7837 S Tacoma Way, Tacoma, WA, 98409 (253) 476-9000

Eastern Washington (Spokane) PSLAC East

PSLAC East Member's meetings are on the 1st Saturday of each Month unless specified

below from 9:30 AM to 12:30 PM approximately.

- Informal meetings held at Spokane Tandy Leather Factory Store, 1702 North Monroe Street, Spokane, WA 99205 Contact Ken Bush (509-294-1883) for time, date (normally the 1st Saturday) for details.

We are members of PSLAC East (Puget Sound Leather Artisans Coop). The East is because we are East of the Cascade Mountains. We offer classes in leathercraft at the Spokane Tandy Leather Factory store. These classes are free and open to the public. An informational newsletter is sent out prior to each class with a short description of the class, indicating whom the instructor will be and what tools will be needed. We also schedule ad hoc classes which are announced in the newsletter. To be on our mailing list for class notifications, please send an email (including your full name) to whiterosex@aol.com requesting to be on the PSLAC East mailing list.



PSLAC Members Only Advertisement Page

Any PSLAC Member can advertise leather related products or services, subject to approval. Just send your text, picture and/or logo to stelmack@nwlink.com

MARQUIS UNIQUE LEATHER ARTISTRY, LLC

Paula and George Marquis

www.marquisuniqueleather.com



I make almost anything that can be made from leather and can be sewn by hand. I do not like sewing machines and cannot get along with them. Therefore, that excludes making clothing, which entails using very soft leather.

A lot of my works are 'bespoke items', meaning, one of, individual custom requests, ranging anywhere from books and folders to rifle scabbards, holsters and golf bags, fully carved and stamped, and any and all articles in between, which also includes saddles and harness.

I like to make articles that are practical, such as all kinds of bags (including brief cases, bible covers, etc.), belts with a challenge, mouse pads, tissue box holders, knife and sword sheaths, 11th Century bottles (sealed so they can be used as wine carafes), to various types of boxes (both useful and decorative) and other artistic decorations including such things as moulded bowls and vases as well as framed pictures.

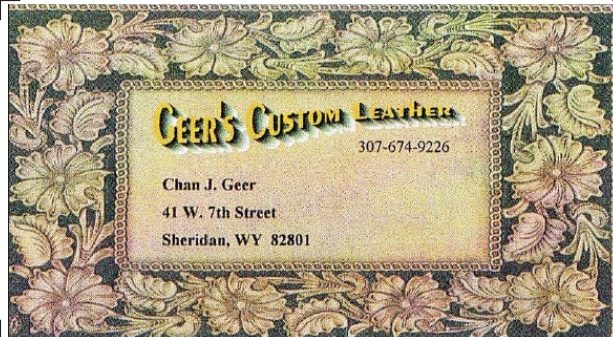
Phone: (206)-523-6295

Email: marquispg@aol.com

Leather Big Book Covers

www.leatherbigbookcovers.com

by Bob Stelmack,
Desert Leathercraft LLC



Leather Accents

Custom Stitching Horses & Clams

John Wickstrom—Maker

Beautiful handcrafted wood

Call for information (360) 456-1688



Norm Lynds Toolmaker

Mallets, Modelers, embossing tools,
lifters and others on request

Phone: (425) 357-1001

E-mail: sagerat2003@yahoo.com

Leather Companies & Sponsors Page



**Washington State Stores: Seattle, Tacoma,
Spokane**
(www.tandyleather.com)

Seattle, WA

14713 Aurora Ave N
Shoreline, WA 98133
Manager: Andy Stasiak
Phone: 206-417-6100

Tacoma, WA

13819 Pacific Ave S
Tacoma, WA 98444
Manager: Diana Vanwyck
Phone: 253-548-1100

Spokane, WA

1702 N. Monroe St.
Spokane, WA 99205
Manager: Jason Jones
Phone: 509-328-9939

RawHide Gazette

Contact : Ken Erickson
Treasurer: Jeff Bement
Secretary: Paula Marquis
Directors: Ken Erickson, Len Madison, Roger
Kaiser, Paula Marquis & Norm Lynds
The RawHide Gazette is published monthly
Address for information and correspondence:
PSLAC, c/o Jeff Bement, PO Box 24034 Federal
Way, WA 98093
EMail: pslac@pslac.org , Billing@pslac.org

PSLAC Membership:

- "a" Internet access to RawHide Gazette including Member only area & meeting attendance \$20/year. (1 Person)
- "b" US Postal Mail copy of RawHide Gazette including new Member only articles & meeting attendance \$30/year. (1 Person)
- "j" Junior (16 and under) Internet access to RawHide
- Gazette including Member only area and meeting attendance \$10 per year.

All submissions are subject to editing for clarity and length.
All articles submitted must be accompanied by name, address and permission of writer

▼ Support our sponsors and take advantage of the PSLAC Membership Discounts... ▼

BRETTUNS VILLAGE LEATHER

Selling odd lots, miscellaneous overstocks, bargain leathers and leathercraft accessories, all from Maine, only online

Sides, Full Hides, Buckles, Key Rings, Laces, Thread, Tools, Rivets
Scrap Pieces, Elk & Buffalo Scrap

Always Free Shipping in the 48 States

www.brettunsvillage.com

Brettuns Village, Inc.

557 Lincoln St

Lewiston, ME 04240

TEL: (207)782-7863, FAX: (207)782-7448

Steve Derricott



Twister D Products

301 E. Bower St.

Meridian, Idaho 83742

(208) 884-3766 - Fax (208) 884-3767

A Division of Gfeller Casemakers, Inc.

www.lacemaster.com

Offering a 10% discount to the PSLAC members

Outside Washington
1-800-343-9949

(206) 328-0855
Fax: 328-0859

MACPHERSON

Leather Company

Leather, Shoe Finding and Saddlery

www.macphersonleather.com

Offering a 30-40% off retail discount to the PSLAC members

519 - 12th Avenue S.
Seattle, Washington 98144



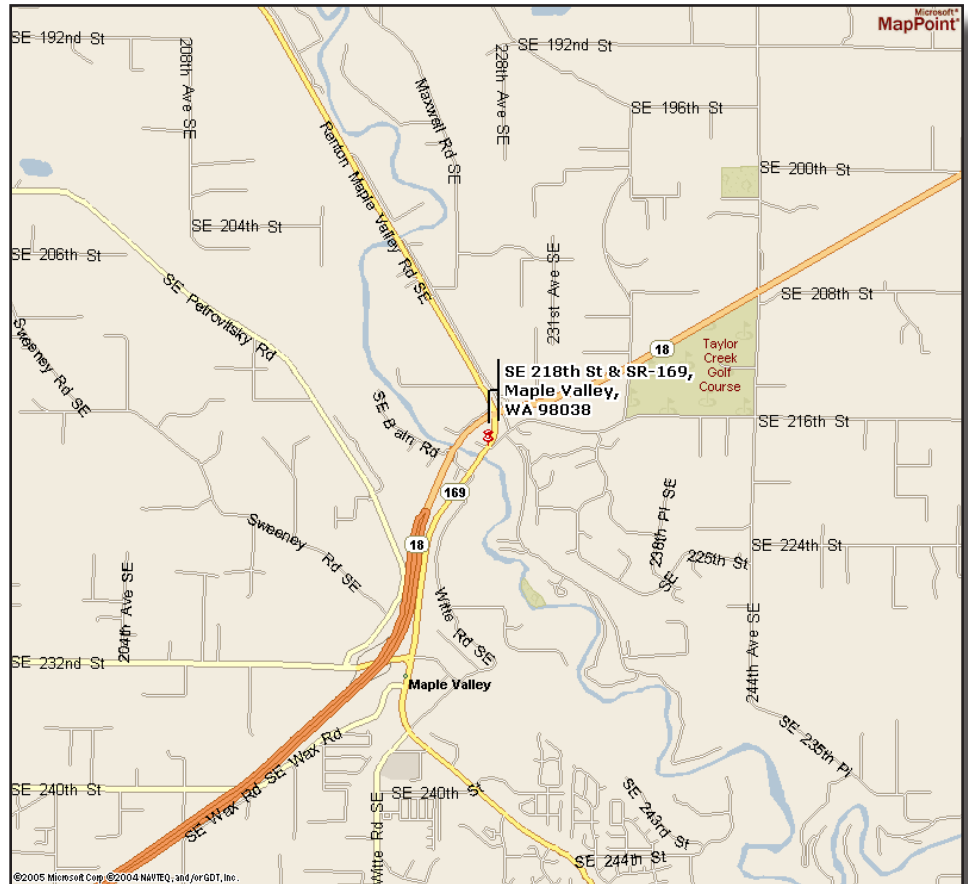
Toll Free:
(800) 541-3264
**Bee Natural
Leathercare**
*The ultimate in
leather care prod-
ucts*

P.O. Box 820803, Vancouver, WA. 98682-0018
(360) 891-7178 , FAX: (360) 891-7166
Email: bnatura@pacifier.com

From I-405 take the SR169 exit and proceed toward Maple Valley on the Maple Valley Highway. In about 10 Miles you will reach the SE 216th/SE 218th Street intersection. Turn Right onto SE 218th (the downsloping hill on the left next to the Maple Valley Market parking lot) towards the big white/gray building next to the bridge (the Cedar Grange). The parking lot is on the first left.

From Highway 18 take the SE 231st, Junction 169, Maple Valley exit. Proceed to the Highway 169 (Maple Valley Highway) junction. Turn North (toward Renton) on Highway 169 and go about $\frac{3}{4}$ mile until you reach the SE 216th/SE 218th Street intersection. Turn left onto SE 218th (the downsloping hill on the left next to the Maple Valley Market parking lot) towards the big white/gray building next to the bridge (the Cedar Grange). The parking lot is on the first left.

From Issaquah take Front Street toward Hobart and Highway 18. In about 10 miles get on Highway 18 West heading toward Maple Valley and Auburn. Follow the Highway 18 instructions.



PSLAC
c/o Jeff Bement
PO Box 24034
Federal Way, WA 98093
USA

