

Raw Hide Gazette

Copyright © 2016 by PSLAC, All Rights Reserved

"Without question, the *Raw Hide Gazette* is by far the best and most informative and comprehensive Guild publications of all of them! You are to be commended for your very fine and professional efforts. Keep up the good work. With admiration"
/signed/

Al & Ann Stohlman, December 1997



<https://www.facebook.com/groups/579402962214064/>

PSLAC Website

<http://www.pslac.org/>

Puget Sound Leather Artisans Co-Op

December 2016

Hide Highlights

Page

1	2016 Pendleton Leather Trade Show
1	2016 Pendleton Leather Trade Show Pictures
2	Leather Machine Co. (A.K.A. Cobra Steve)
2	Bee Natural Leathercare Inc.
2	Leather Wrangler, Inc.
3	Van Amburg Leather
3	Barry King Tools
3	Frogjelly Leather
3	Dubois Leather
3	Sorrell Notions & Findings
4	Tandy Leather
4	Douglas Tools
4	Amanda Marie Fraker's Elk Class
5	John Wickstrom's Camouflage Technique
5	Veteran Discounts at Tandy Leather
6	Hamley's in Pendleton, OR
7	Chuck Carlson
8	Norm's Report
9	Meeting Activities for December 2016
9	Meeting Times & Location
12	Meeting Directions to Cedar Grange #534

Our PSLAC MISSION is...

To further the enjoyment of leather and to help others learn more about the real joy of leather - working as a group and sharing ideas and knowledge of leather, its uses and how to use it. To pass on this knowledge to others and then have them pass it on to the new members who come later. A fellowship with peers, young and old, expert and non-expert, anyone who has the love of leather.

To show and demonstrate to people outside the Co-Op leather in all forms and try to help them to become interested in leather.

...to share...

time talent, with all others in the Co-Op, especially the young.

2016 Pendleton Leather Trade Show



I don't know what is more entertaining at the Pendleton Leather Trade Show: the reacquainting of old leather friends, the instructional classes, the vendors with the expertise and sale prices, the fantastic **Out-west Catering** lunches at the Convention Center or the special event at **Hamley's**.

The show opened 9am, November 4th at the **Pendleton Convention Center**, 1601 Westgate, Pendleton OR, 97801. The show is free.

The show consisted of a Trade Show and Classes. The vendors you will see at the trade show travel from all over the Western US and are specifically related to the leather crafting industry. The vendors are the backbone of the show and displayed a diverse selection of goods such as leather, hardware, saddle trees, stirrups, fancy conchos, stamping tools, saddlery tools, bootmaking supplies, glue, conditioners, dyes and much more, all were available for purchase. The classes featured a wide-range of subject matter with literally something for everyone. The instructors were all dedicated to teach-

ing their craft and for students to come away with new skills and confidence.

Throughout the weekend there were drawings to win "Leather Dollars." The Leather Dollars were \$100 vouchers that could be spent with any vendor at the trade show. Everyone who registered when entering the Trade Show and all students taking any class were eligible for the Leather Dollars drawings. They gave away a total of \$1000 throughout the show Friday & Saturday.

NEW THIS YEAR: Hamley's & Co. sponsored a get-together for all trade show participants. All vendors, instructors, students and attendees went **Slickfork Saloon** on Friday for appetizers and a no-host bar and live music. The Hamley store is a fixture of downtown Pendleton and thanks for the hospitality: Parley, Penny and the Hamley's crew.

Bob Stelmack
Richland, WA

2016 Pendleton Leather Trade Show Pictures

Now there were a lot of pictures taken at the Leather Trade Show, so I've got a question for you: "Is there any PSLAC member who does not have a Facebook account?". If so, please let me know at: stelmack@nwlink.com ...so I can determine where to place extra pictures for viewing.

For example, I took 47 pictures of the each of the vendors and their displays at the Leather Trade Show. Those pictures are on the PSLAC Facebook Group

Join PSLAC Facebook Group

<https://www.facebook.com/groups/579402962214064/>

So, for those with or without a Facebook account I'll include some pictures of the vendors I was interested in and who I had some discourse with.



Leather Machine Co. (A.K.A. Cobra Steve)

Looked over the newest addition to the Cobra line of sewing machines--the COBRA 26.



Looks like the COBRA 26 fits between the COBRA Class 3 Heavy Duty Leather Stitcher

- 9" Cylinder Arm
- Versatile presser feet in the business
- Sews from 6 oz. to 7/8"
- Thread sizes from 69 to 415
- Triple Feed mechanism
- Reverse stitches in same holes
- Stitch Length from 3-22 stitches an inch

...and the COBRA Class 17 Walking Foot Machine:

- Walking foot mechanism
- Sews up to 16 oz. leather or fabric (depending on material)

- Big bobbin (M Style)
- Servo motor with adjustable speed
- Uses thread sizes from 69 to 138

I have two similar machines: (1) FERDCO TK-1245 and (2) FERDCO TK-206H, but this COBRA 26 appeals to me. The advantages I see, for me, are: (1) ability to use thicker thread for decoration on my book covers. (2) cylinder construction to get in-



side for bags and purses, and (2) nice small foot print for the work space.

During the Trade Show, Vince was helpful pointing out the advantages of each of the machines. Vince also said that Steve is recovering from the his accident in May and is working in the shop.



On Saturday, Dave gave an excellent overview of the "care and feeding" of the Class 4 (441) type sewing cylinder machines complete with pre-written notes that were



handed out. Threading, adjustments, and timing were covered.

Bee Natural Leathercare Inc.

After all my experimentation with different



products to weatherproof the lather patches I sew on my leather book covers, Dave suggested I try Rain & Snow Protectorate.



He said is excellent waterproofing for leather footwear and might work for my book covers.

RAIN & SNOW contains natural oils and waxes. This special formulation gives leather the conditioning and waterproofing agents needed to protect and preserve.

So I now own a bottle of the elixir and will try it.

Leather Wrangler, Inc.

Paul always has some sharp instrument that I can't live without, but this time I was trying to be more business like for my business, so I just fondled his tools and walked on by.

Seriously, there are two of the best head knives I've ever used: J. Cooks & Leather



Wrangler. And the different styles of the head knives and the Leather Wrangler swivel knives are on my tooling desk.



Van Amburg Leather

This visit didn't result in a purchase, but that doesn't mean I didn't drool a little. I told myself that I wasn't going to buy anymore specialty leather until I finish making an



alligator back guitar strap.

Barry King Tools

A few years ago I bought this really cool snap setting tool for the line 20 and for the line 24 snaps. The tool is in two parts: (1) the barrel that is machined on one end for



the female part of the snap and similarly machined on the other end for the male part of the snap; and (2) the machine post that slides down the center of the barrel to splay the post of the snap with the hit of a mallet.



What I really like about Barry's snap setter is the machined barrel helps keep pressure on the snap and the leather. Since I've owned his snap setter I haven't had a snap installa-

tion fail to set properly.

The machined post does splay the snap post, but does not roll the splayed material down flat against the snap itself.

It is a subtle difference, but I don't feel the snap is really secure so I use an old snap setter to finish setting the snap.

Doesn't sit flush

I tried chucking the machined post into a electric drill and used a file to shape the

Works

machined post but I couldn't get the sharp transition needed.

I know Barry is busy and had a horrific accident, so I will be patient until the next Pendleton show.



Frogjelly Leather



A newer addition to the Pendleton Leather



Trade show. I talked with Junaid Zaman, the Sales Account Executive for Frogjelly Leather, looking for heavily grained black chrome tanned chap leather. Many people like the pronounced grain on my book covers. This is the second year that the leather show did not have the leather I usually buy. Junaid asked me to send a sample and he will source the leather for me.

Dubois Leather

Call them at: (208) 374-5490. They are located at 93 W Main St, Dubois, ID 83423 93 W Main St, Dubois, ID 83423 and they said they could deliver single sides of Hermann Oak or Wicket & Craig at a good price.

Sorrell Notions & Findings

I did visit with Lisa and her mom. I picked up Lisa Sorrell's book:

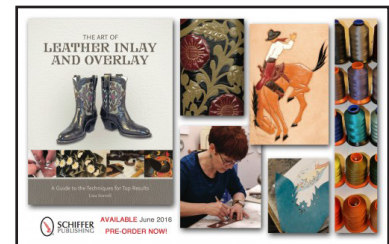
"The Art of Leather Inlay and Overlay".

I and was pleasantly surprised of the detail and the clarity in both the pictures and text. It was like she was talking directly to me. I felt like I could make inlays and overlays, in her style, just by reading the book. I'm



half way through and would like to try some inlay/overlay on some book covers.

ISBN: 978-0-7643-5121-1 Size: 8 1/2" x 11" Pages: 176 Images: Over 470 color photos and diagrams Binding: Hard cover



Price: \$34.99 – Dozen of striking examples, plus clear instructions from a master, lead you to successful leather art – This almost-

forgotten decorative art has rarely been documented, making this guide a ground-breaking resource – Also includes step-by-step instructions for three leather projects using inlay and overlay

Tandy Leather



OMG (just catching up the new lingo language) Tandy had vegetable tanned 2/3 & 3/4 ounce leather on sale for \$50 a side. Now these were not pristine, but I use rectangles about 5 by 7-inches for patches to sew on my book covers and I can easily cut around spots and holes.



Jason offered me a little extra deal when I picked up 20 sides. Even **John Wickstrom** got into the action.

Douglas Tools

What can I say? If you need it, he has it.

Bob Stelmack
Richland, WA

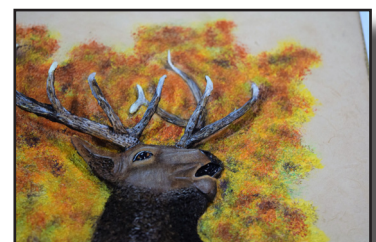
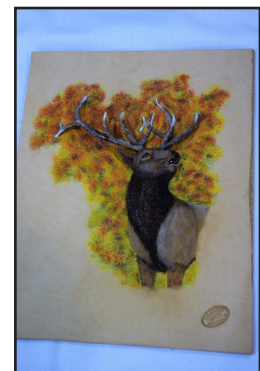


Barry King's Special Line 24 Manual Snap Setter



Amanda Marie Fraker's Elk Class

This is an up close and personal look at the elk that Amanda has been teaching.



Tandy Leather now offers our U.S. Military Appreciation Program. This is a benefit program to provide elite pricing to those who serve or have served in the United States Military. Included are active military members and veterans, members of the National Guard and Reserves, as well as spouses of members. There are no limitations on the time period of service, the branch of military, or the rank of the individual to participate in the program. You can receive your special pricing in our stores, or while shopping online by verifying your eligibility initially in your local store.



Membership is FREE!

Sign up at your local Tandy Leather store

When visiting your local Tandy Leather store, present one of the following military service documents to verify eligibility for our U.S. Military Appreciation Program:

- Military ID Card/Common Access Card (CAC)
- DD214
- Department of Veterans Affairs ID Card (VIC)
- State Issued Veterans Designation on Driver's License
- Veteran of Foreign Wars Card (VFW)
- American Legion ID Card
- United States Uniformed Services Privilege and Identification Card (USID)

In addition to Preferred Pricing, members will also receive:

- A Military Appreciation Program Card in the mail
- Special flyers, sent periodically throughout the year, saving you even more money!
- An monthly email, with a valuable coupon code, that can be redeemed for dollars off a purchase at Leathercraftlibrary.com
- Lifetime Membership



Veteran Discounts at Tandy Leather

Incase you haven't heard, Tandy Leather is offering veterans and their spouses special prices. Contact your local store for details and sign up for the U.S. Military Appreciation program.

Bob Stelmack
Richland, WA

John Wickstrom's Camouflage Technique

While in Pendleton, I got a chance to look at one of John's famous portfolios. He uses a technique to mask flaws in vegetable tanned leather, those: bug bites, scars, cuts and other imperfections. What John uses is 20 grit flooring sandpaper. While the leather is still cased sections of the 20 grit sandpaper are pressed into the areas of the flaw and then fanned out to make it appear that the impressions are part of the design.

In the sample on the right you can see where sandpaper impressions surround the tooled designs.

Eager to try this at home, I just grabbed an applique I was working on and impressed the whole piece with a sheet of 20 grit sandpaper that was larger than the whole leather piece on my Weaver 4-ton press. Bit of an overkill, but this was just a test.

Also, picked up a 36 grit sandpaper for another test. I think the best way to use the sandpaper is to glue it to the end of a slightly rounded end of a one-inch dowel shaped circle with chunk taken out of it. Leave it 5-inches long and use as a matting stamp



After antiquing, here is the result.

Bob Stelmack
Richland, WA



Hamley's in Pendleton, OR

A few pictures inside the Hamley's retail store and saloon. Hamley made the retail store available for the vendors and registered participants after hours. I tell you that Karen made good use of that time.

Once again, thanks to Parley, Penny and the Hamley's crew for party and the access to the store.

Bob Stelmack
Richland, WA





Chuck Carlson

I got to meet up with the first editor of the *Rawhide Gazette*. Those editions were “handwritten” and mailed to each member.

We talked about old times and he and his wife **Sandy** were able to stop overnight and look at some of my processes and tools.

Later, when they returned to the west side, he was there in time for the monthly **PSLAC** meeting at the Grange building. He sent me an email and said he was there on-time, but no one else was there. I gave him Paula’s phone number and the next day he sent me this:

I just saw your message. yes, probably about 20 people were there. I learned that the Grange building is a three story building that is built into the side of a hill that the top floor is up at street level. They meet on the top level, accessed via a bridge walkway on the side of building. They all park in front of a closed down former state run liquor store that is next to the Grange and on the same level as the upper level they meet at. I had pulled down around back, the only parking next to the building, and no cars were there, the place looked deserted!!! It seems that most of the folks don’t care to climb up two stories up the side road from the rear lower parking, I could

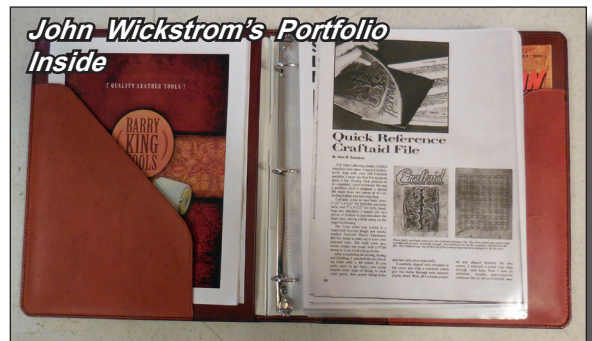
not agree more.

The cell phone number for Paula did the trick, we figured out where each other were, by this time I was two businesses away at a gas station. It was a great meeting, it’s wonderful to renew old friendships, and share ideas and techniques. Sandy and I are heading out on Sunday with the fifth wheel for a 4-5 week to Oregon, California, Nevada, Arizona, New Mexico, Colorado, Utah and Idaho. We have relatives along the way, and National Parks to visit. I also want to visit some saddle and boot makers shops.

I’ll take pictures and send them along the way. The great thing about being retired is that we can stay longer if we find an interesting area, or we can boogie on if we want also. On this trip we are only limited by wanting to be home for Christmas. So I will miss gatherings in December, and will probably see folks again in January.

Thanks again for your hospitality on the way back from the Pendleton Leather Show. We wish you and yours a very happy Thanksgiving holiday. Chuck and Sandy.

Bob Stelmack
Richland, WA



Norm's Report

Sorry for the delay I getting these to you, been recuperating from a double hernia surgery. Just now able to get up the stairs to the computer. As it was a double, one on each side, the surgeon used a robot to do it, a monster standing over in the corner of the OR with all kinds of arms hanging off it.

Anyway, someone whom we haven't seen in a lot of years showed up, **Chuck Carlson**. Chuck was one of original members of PSLAC.

A guest was there, **Gregg McNutt** with a reenactment breastplate that he is making.

Jeff Bement attended two classes at the Pendleton show, one by **Lisa Sorrell** which is the pouch, and the other by **Ed LeBarre** which is the oak leaves. He also attended a class by **Amanda Fraker** in Spokane which is the **Rob Barr** style elk.

Norm Lynds



Meeting Activities for December 2016

Last meeting for the year and our annual Christmas Gift Exchange.

It's always a lot of fun putting a wrapped parcel on the table and later picking one up and getting a surprise at the contents.

Roger will have coffee going and anybody wants other drinks, bring a bottle or can and a snack to put out. There will be no workshop this month, but, we will have show and tell and hope everybody brings some work (recent or otherwise) that we likely haven't seen.

Getting a little ahead, the January meeting John will lead us in making a slim line wallet made from 3/4oz leather. He will have a list of supplies and materials needed for this project at the meeting so we can all be prepared for January.

Look forward to seeing everybody at the meeting.

Paula

CHECKLIST

<input checked="" type="checkbox"/>	<u>Ready for fun</u>
<input checked="" type="checkbox"/>	<u>Complain</u>
<input checked="" type="checkbox"/>	<u>Good attitude</u>
<input checked="" type="checkbox"/>	<u>Learn something new</u>
<input checked="" type="checkbox"/>	<u>Something to share</u>
<input type="checkbox"/>	<u>What to bring</u>

Meeting Times & Location

Western Washington (Seattle/Tacoma/Everett)

General Member's meetings are on the 2nd Sunday of each Month unless specified below. 1:00 PM to 4:00 PM approximately. Meetings held at Cedar Grange Hall No. 534 at Maple Valley General meetings start at 1:00 PM followed by the mini-demos.

Breakfast informal get-together locations:

North Breakfast: Last Friday of the month at 10:00 AM. Lake Forest Park Town Centre. 17917 Bothell, Everett Hwy, Bothell, WA 98012 Bothell Way N, bordered by 170th N. & Ballinger Way N. Meet in the Third Place Books eating area.

South Breakfast: 3rd Saturday of the month at 8:30 AM. Homestead. 7837 S Tacoma Way, Tacoma, WA, 98409 (253) 476-9000

Eastern Washington (Spokane) PSLAC East

PSLAC East Member's meetings are on the 1st Saturday of each Month unless specified

below from 9:30 AM to 12:30 PM approximately.

- Informal meetings held at Spokane Tandy Leather Factory Store, 1702 North Monroe Street, Spokane, WA 99205 Contact Ken Bush (509-294-1883) for time, date (normally the 1st Saturday) for details.

We are members of PSLAC East (Puget Sound Leather Artisans Coop). The East is because we are East of the Cascade Mountains. We offer classes in leathercraft at the Spokane Tandy Leather Factory store. These classes are free and open to the public. An informational newsletter is sent out prior to each class with a short description of the class, indicating whom the instructor will be and what tools will be needed. We also schedule ad hoc classes which are announced in the newsletter. To be on our mailing list for class notifications, please send an email (including your full name) to whiterosex@aol.com requesting to be on the PSLAC East mailing list.



PSLAC Members Only Advertisement Page

Any PSLAC Member can advertise leather related products or services, subject to approval. Just send your text, picture and/or logo to stelmack@nwlink.com

MARQUIS UNIQUE LEATHER ARTISTRY, LLC

Paula and George Marquis

www.marquisuniqueleather.com



I make almost anything that can be made from leather and can be sewn by hand. I do not like sewing machines and cannot get along with them. Therefore, that excludes making clothing, which entails using very soft leather.

A lot of my works are 'bespoke items', meaning, one of, individual custom requests, ranging anywhere from books and folders to rifle scabbards, holsters and golf bags, fully carved and stamped, and any and all articles in between, which also includes saddles and harness.

I like to make articles that are practical, such as all kinds of bags (including brief cases, bible covers, etc.), belts with a challenge, mouse pads, tissue box holders, knife and sword sheaths, 11th Century bottles (sealed so they can be used as wine carafes), to various types of boxes (both useful and decorative) and other artistic decorations including such things as moulded bowls and vases as well as framed pictures.

Phone: (206)-523-6295

Email: marquispg@aol.com

Leather Big Book Covers

www.leatherbigbookcovers.com

by Bob Stelmack,
Desert Leathercraft LLC



Leather Accents

Custom Stitching Horses & Clams

John Wickstrom—Maker

Beautiful handcrafted wood

Call for information (360) 456-1688



Norm Lynds Toolmaker

Mallets, Modelers, embossing tools,
lifters and others on request

Phone: (425) 357-1001

E-mail: sagerat2003@yahoo.com

Leather Companies & Sponsors Page



**Washington State Stores: Seattle, Tacoma,
Spokane**
(www.tandyleather.com)

Seattle, WA

14713 Aurora Ave N
Shoreline, WA 98133
Manager: Andy Stasiak
Phone: 206-417-6100

Tacoma, WA

13819 Pacific Ave S
Tacoma, WA 98444
Manager: Diana Vanwyck
Phone: 253-548-1100

Spokane, WA

1702 N. Monroe St.
Spokane, WA 99205
Manager: Jason Jones
Phone: 509-328-9939

RawHide Gazette
Contact : Ken Erickson
Treasurer: Jeff Bement
Secretary: Paula Marquis
Directors: Ken Erickson, Len Madison, Roger
Kaiser, Paula Marquis & Norm Lynds
The RawHide Gazette is published monthly
Address for information and correspondence:
PSLAC, c/o Jeff Bement, PO Box 24034 Federal
Way, WA 98093
EMail: pslac@pslac.org , Billing@pslac.org

PSLAC Membership:

- "a" Internet access to RawHide Gazette including Member only area & meeting attendance \$20/year. (1 Person)
- "b" US Postal Mail copy of RawHide Gazette including new Member only articles & meeting attendance \$30/year. (1 Person)
- "j" Junior (16 and under) Internet access to RawHide
- Gazette including Member only area and meeting attendance \$10 per year.

All submissions are subject to editing for clarity and length.
All articles submitted must be accompanied by name, address and permission of writer

▼ Support our sponsors and take advantage of the PSLAC Membership Discounts... ▼

BRETTUNS VILLAGE LEATHER

Selling odd lots, miscellaneous overstocks, bargain leathers and leathercraft accessories, all from Maine, only online

Sides, Full Hides, Buckles, Key Rings, Laces, Thread, Tools, Rivets
Scrap Pieces, Elk & Buffalo Scrap

Always Free Shipping in the 48 States

www.brettunsvillage.com

Brettuns Village, Inc.

557 Lincoln St

Lewiston, ME 04240

TEL: (207)782-7863, FAX: (207)782-7448

Steve Derricott



Twister D Products

301 E. Bower St.

Meridian, Idaho 83742

(208) 884-3766 - Fax (208) 884-3767

A Division of Gfeller Casemakers, Inc.

www.lacemaster.com

Offering a 10% discount to the PSLAC members

Outside Washington
1-800-343-9949

(206) 328-0855
Fax: 328-0859

MACPHERSON

Leather Company

Leather, Shoe Finding and Saddlery

www.macphersonleather.com

Offering a 30-40% off retail discount to the PSLAC members

519 - 12th Avenue S.
Seattle, Washington 98144



Toll Free:
(800) 541-3264
**Bee Natural
Leathercare**
*The ultimate in
leather care prod-
ucts*

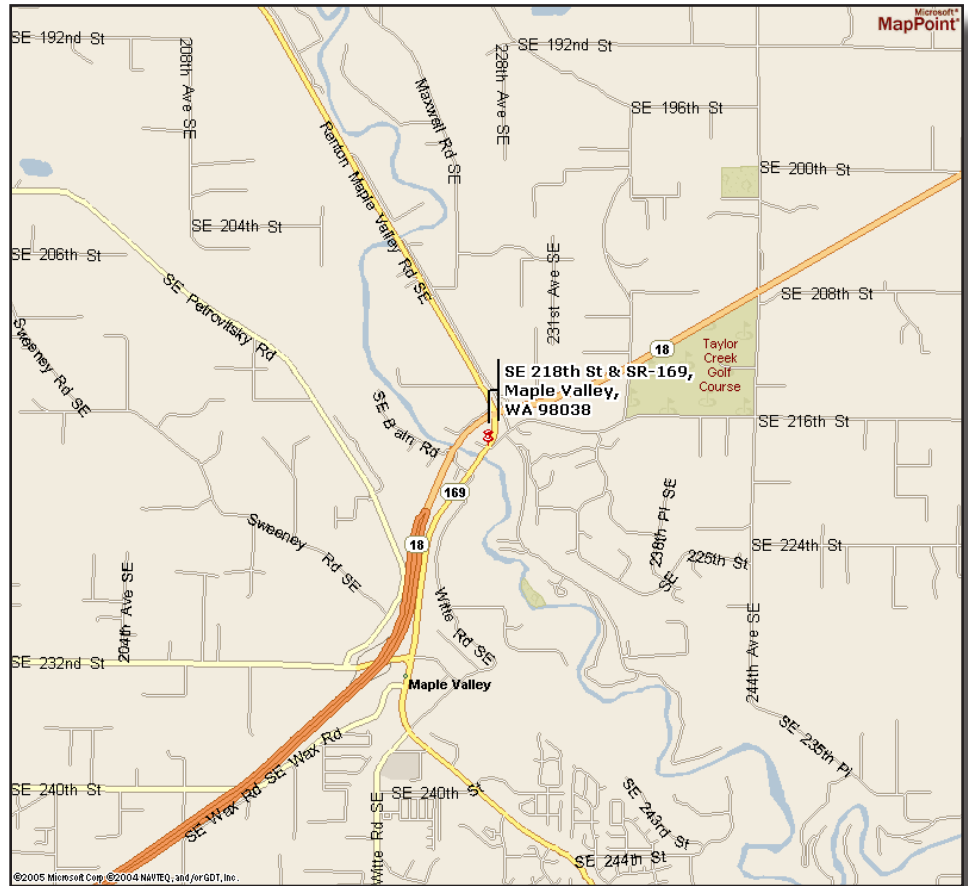
P.O. Box 820803, Vancouver, WA. 98682-0018
(360) 891-7178 , FAX: (360) 891-7166
Email: bnatura@pacifier.com

Meeting Directions to Cedar Grange #534

From I-405 take the SR169 exit and proceed toward Maple Valley on the Maple Valley Highway. In about 10 Miles you will reach the SE 216th/SE 218th Street intersection. Turn Right onto SE 218th (the downsloping hill on the left next to the Maple Valley Market parking lot) towards the big white/gray building next to the bridge (the Cedar Grange). The parking lot is on the first left.

From Highway 18 take the SE 231st, Junction 169, Maple Valley exit. Proceed to the Highway 169 (Maple Valley Highway) junction. Turn North (toward Renton) on Highway 169 and go about $\frac{3}{4}$ mile until you reach the SE 216th/SE 218th Street intersection. Turn left onto SE 218th (the downsloping hill on the left next to the Maple Valley Market parking lot) towards the big white/gray building next to the bridge (the Cedar Grange). The parking lot is on the first left.

From Issaquah take Front Street toward Hobart and Highway 18. In about 10 miles get on Highway 18 West heading toward Maple Valley and Auburn. Follow the Highway 18 instructions.



PSLAC
c/o Jeff Bement
PO Box 24034
Federal Way, WA 98093
USA

